

SPECIFICATION

PART NO: LA52H2450-A36
CUSTOMER PART NO:
CUSTOMER APPROVED BY:
APPROVED DATE:

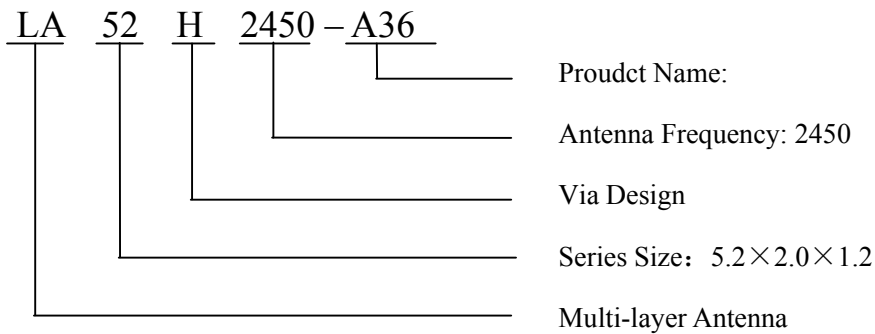
Prepared by:	Checked by :	Approved by:
Formed On	Document Version (V1.0)	

Specification

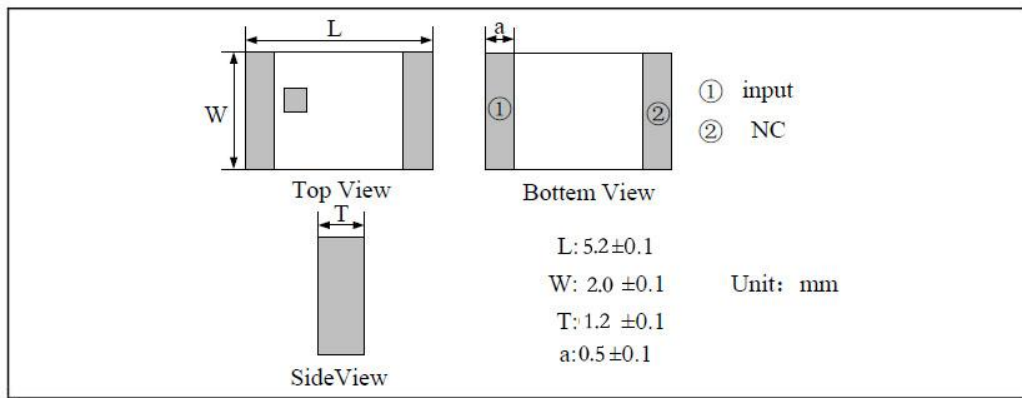
1. INTRODUCTION

"GLEAD" Microwave Multi-Layer Ceramic Antenna LA series are designed to be used in WLAN、WiFi、Bluetooth、PHS、 Multiple-band Mobile phone antenna, FM, etc and compact size SMD chip design.

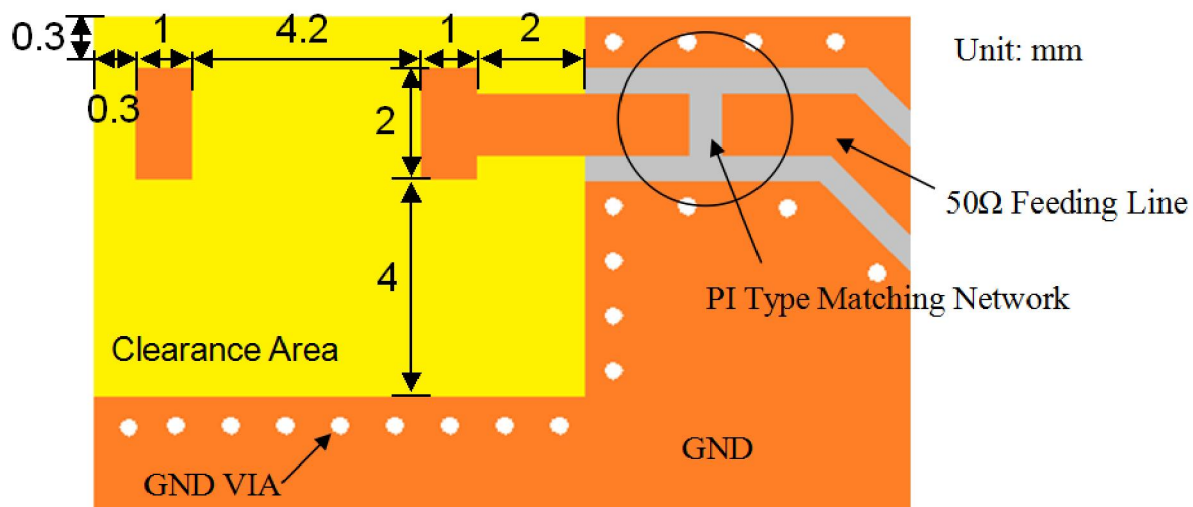
2. Part Number



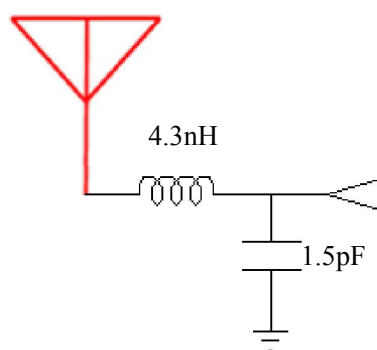
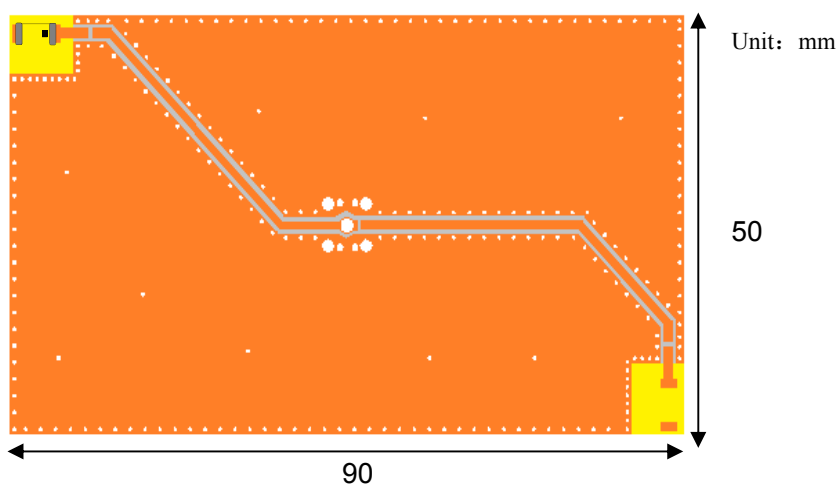
3. Dimensions (Unit: mm)



Specification



4. Evaluation Board and Matching Circuits

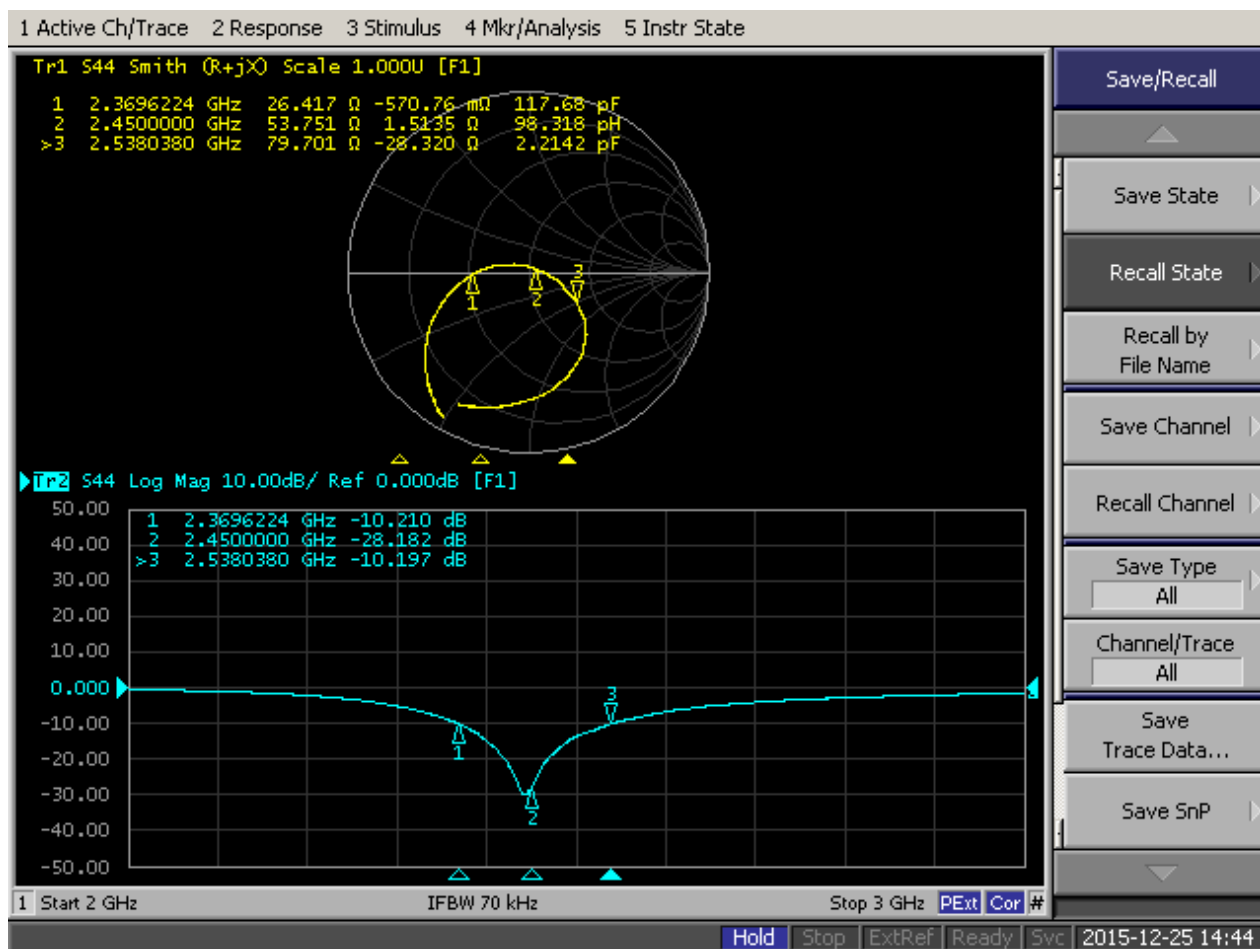


Specification

5. Electrical Characteristics

No.	Item	Specifications
5.1	Working Central Frequency	2450 MHz
5.2	Band Width	100MHz typ.
5.3	Peak Gain	4.97 dBi
5.4	V.S.W.R	≤ 2.0
5.5	Polarization	Linear
5.6	Azimuth Beam width	Omni-directional
5.7	Impedance	50 Ω

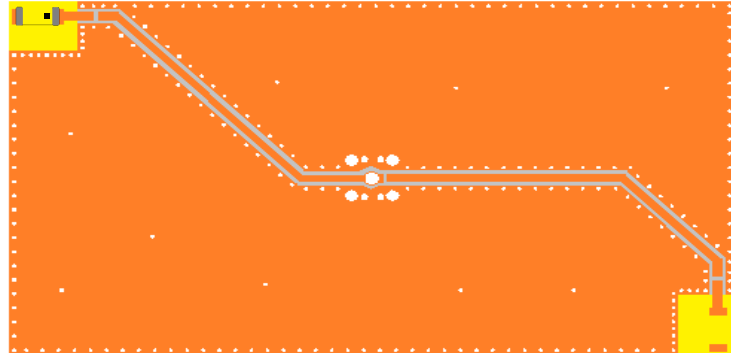
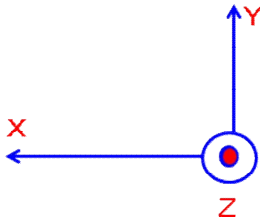
6. Characteristic curve



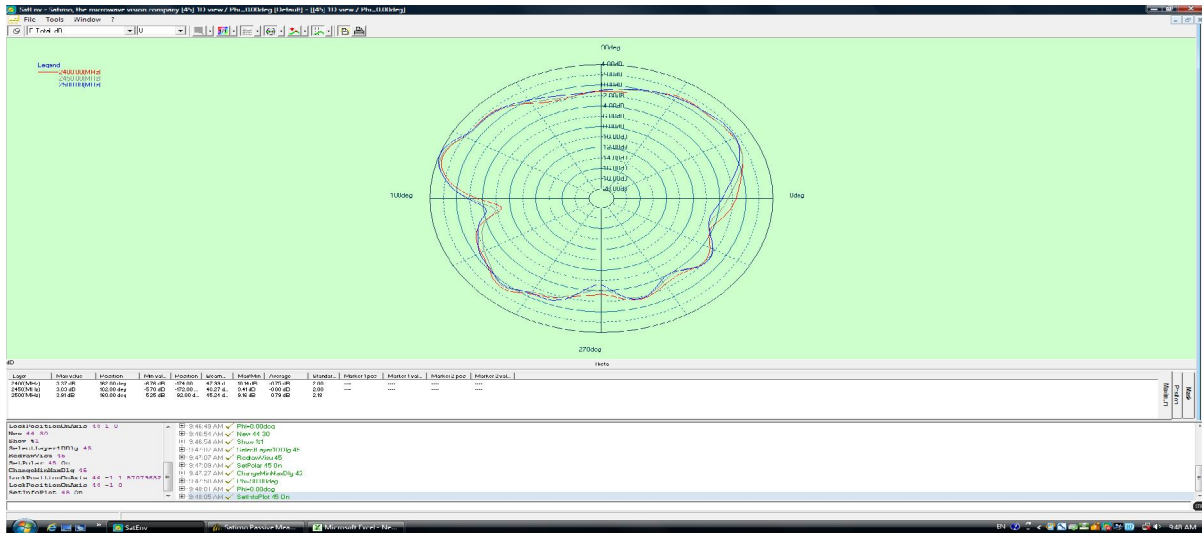
Specification

7. Radiation Pattern & Efficiency

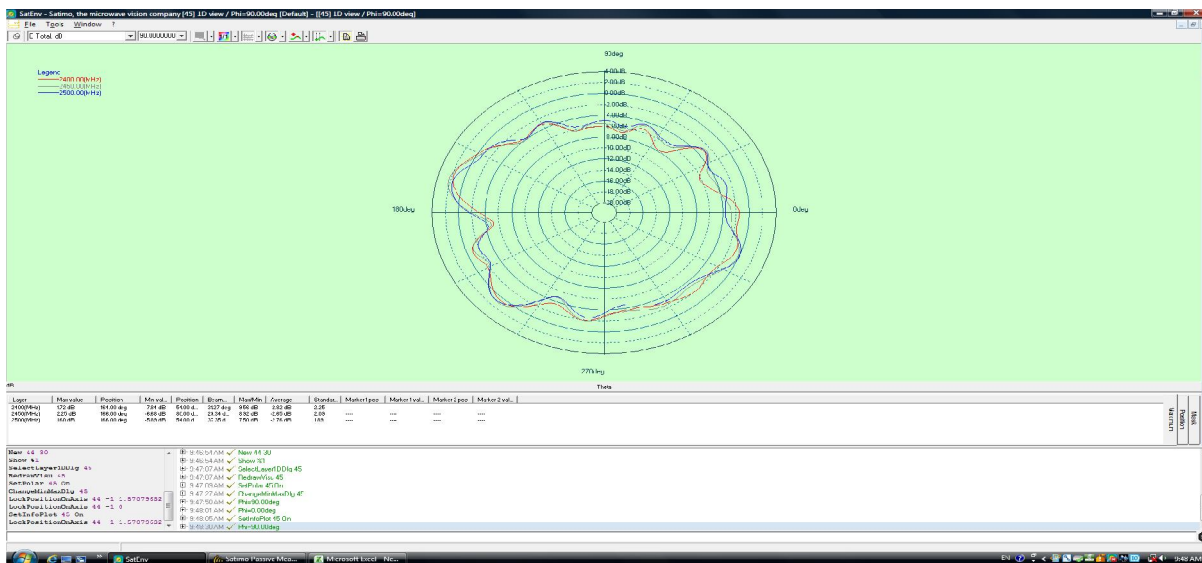
coordinates:



X-Z Plane

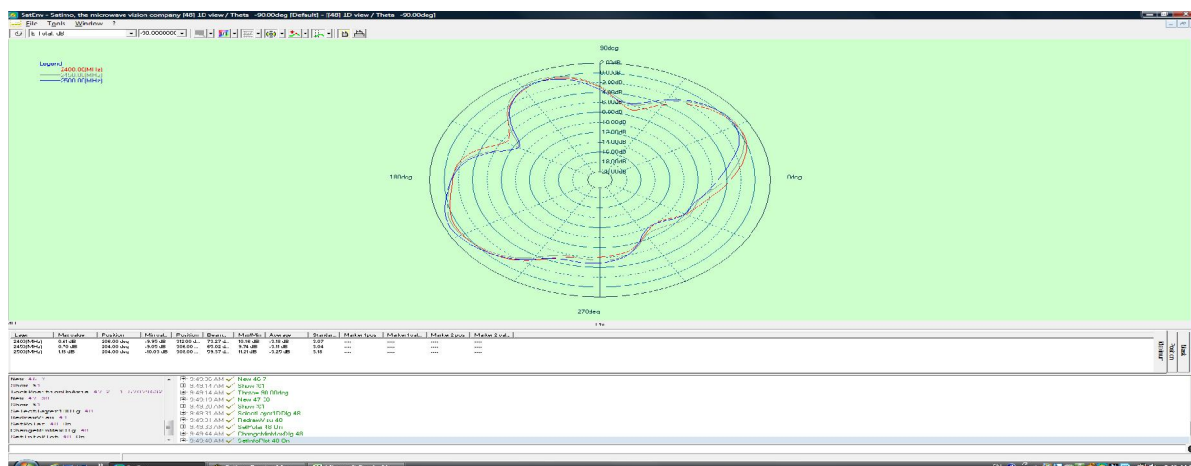


Y-Z Plane

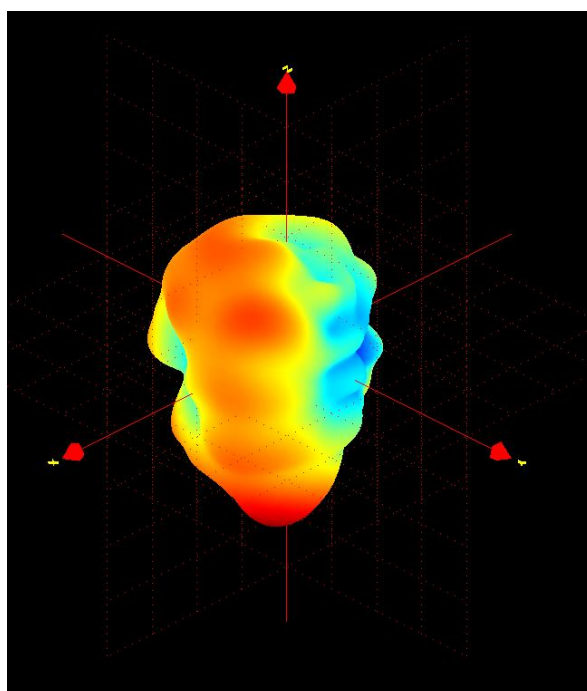


Specification

X-Y Plane



3D Radiation Pattern



Frequency (MHz)	2400	2450	2500
Avg. Gain (dBi)	-0.75	-0.79	-0.88
Peck Gain (dBi)	4.52	4.97	4.85
Efficiency (%)	70.2	71.1	71.2