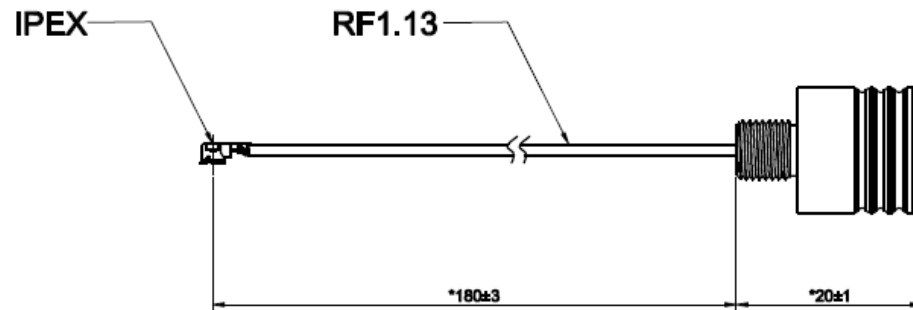
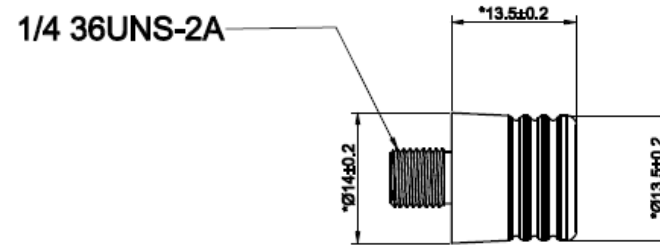


Specification for approval

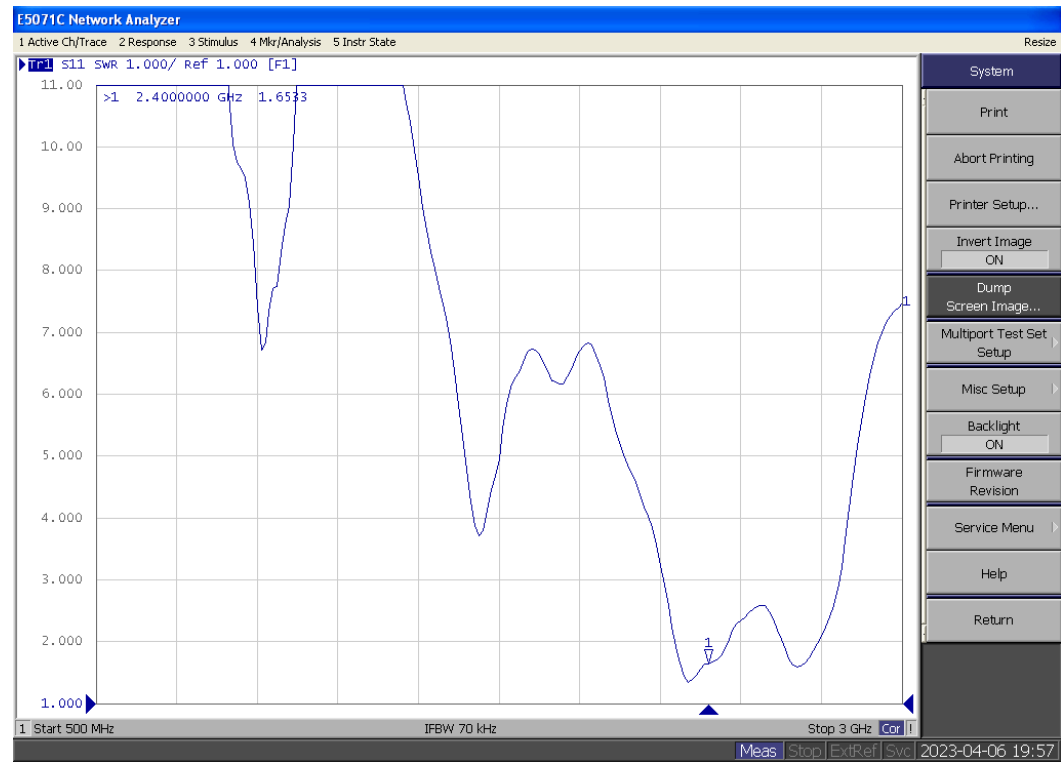
Customer:	<u>RNG International Inc</u>
Antenna model number:	<u>RIV1230RCH-SPS-ANT</u>
Antenna type:	<u>Integral Antenna</u>
Date:	<u>2023.03.20</u>

1. Product Overview & Dimension



2. Test Result

2.1 VSWR

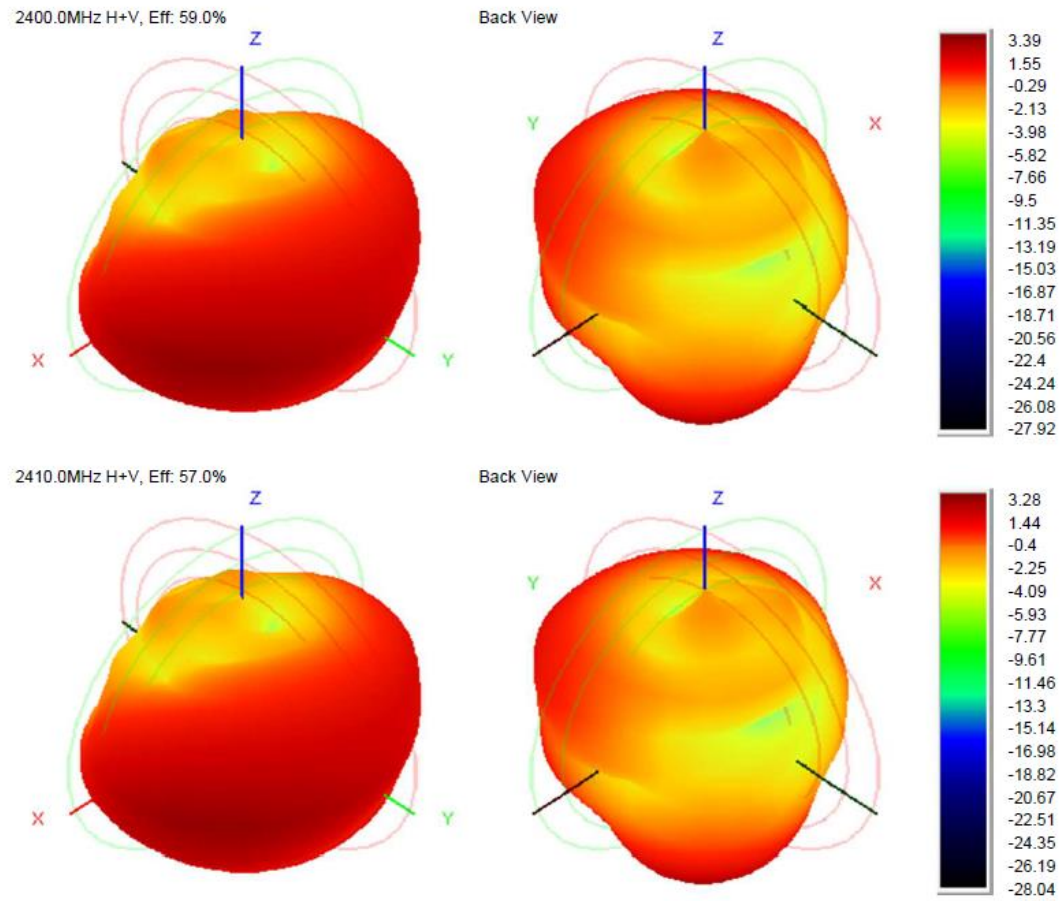


2. Test Result

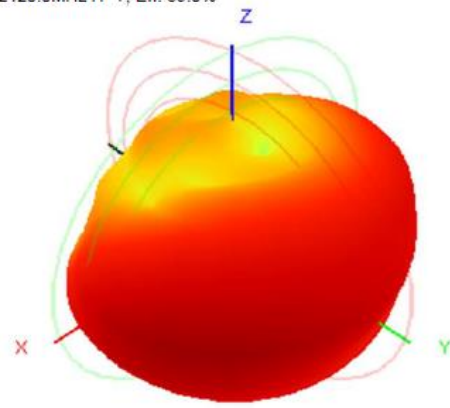
2.2 Gain & Efficiency

Frequency ID	1	2	3	4	5	6	7	8	9	10	11
Frequency (MHz)	2400.0	2410.0	2420.0	2430.0	2440.0	2450.0	2460.0	2470.0	2480.0	2490.0	2500.0
Efficiency (dBi)	-2.29	-2.44	-2.29	-2.22	-2.41	-2.81	-2.92	-2.78	-2.54	-2.64	-2.85
Gain (dBi)	3.39	3.28	3.51	3.56	3.35	2.93	2.83	2.92	3.11	2.91	2.58
Efficiency (%)	59.03	57.03	59.03	60.01	57.45	52.40	51.11	52.67	55.70	54.42	51.93
Directivity (dB)	5.68	5.72	5.80	5.77	5.75	5.74	5.75	5.71	5.65	5.56	5.42
Peak Gain Position (Theta)	135.00	135.00	135.00	135.00	135.00	135.00	135.00	135.00	135.00	135.00	135.00
Peak Gain Position (Phi)	225.00	225.00	225.00	225.00	225.00	225.00	225.00	225.00	225.00	225.00	225.00
Efficiency ThetaPol (%)	45.25	43.54	44.93	45.72	43.95	40.04	38.97	39.97	42.25	41.07	39.01
Efficiency PhiPol (%)	13.78	13.49	14.10	14.29	13.50	12.36	12.14	12.70	13.45	13.35	12.92
Upper Hem. Efficiency (%)	23.09	22.14	22.67	23.08	22.16	20.10	19.29	19.46	20.13	19.15	17.79
Lower Hem. Efficiency (%)	35.94	34.89	36.36	36.93	35.29	32.30	31.81	33.21	35.57	35.27	34.14

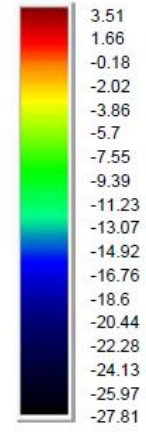
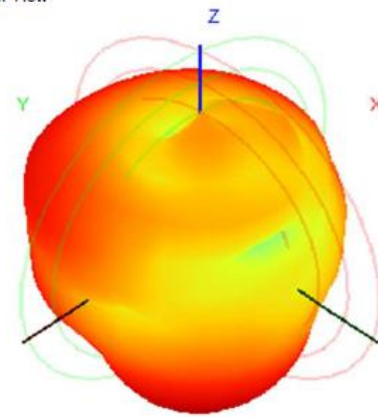
2. Test Result



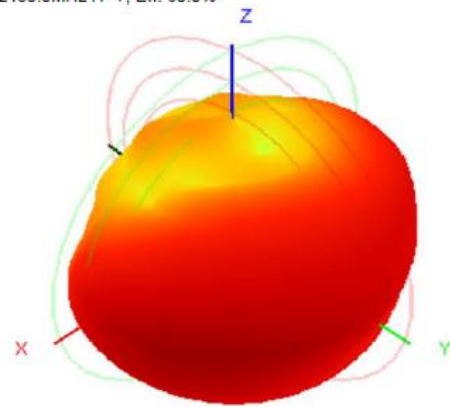
2420.0MHz H+V, Eff: 59.0%



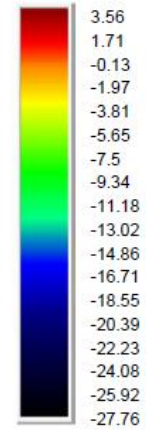
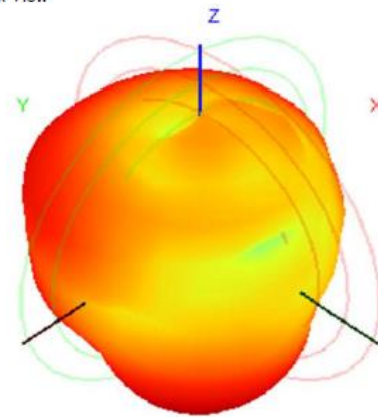
Back View



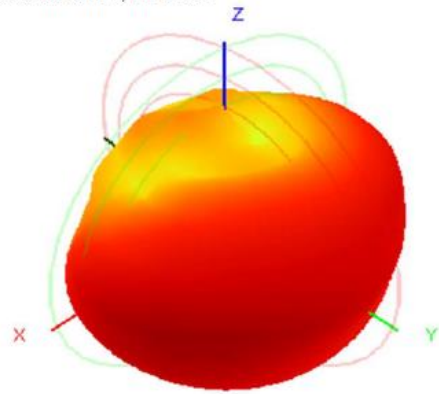
2430.0MHz H+V, Eff: 60.0%



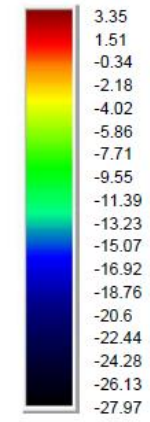
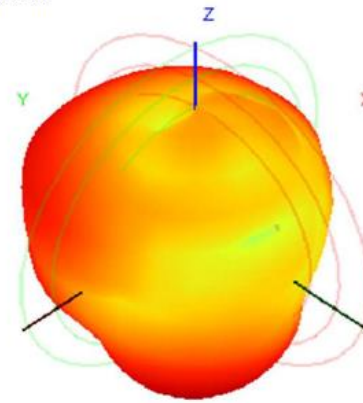
Back View



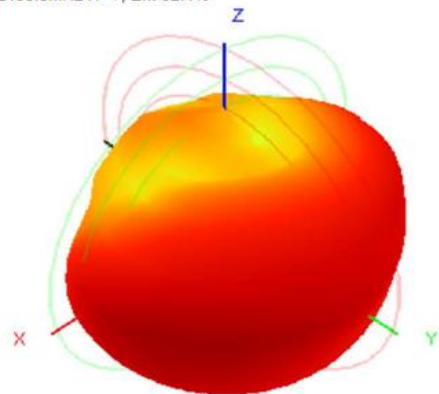
2440.0MHz H+V, Eff. 57.5%



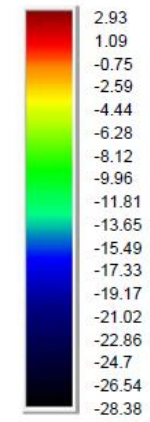
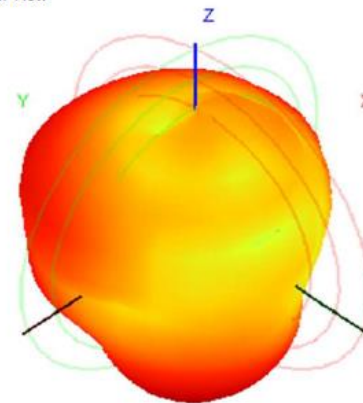
Back View



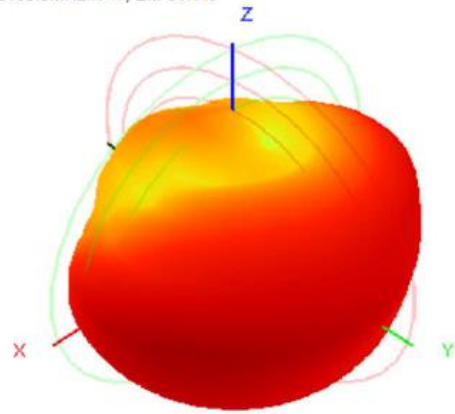
2450.0MHz H+V, Eff. 52.4%



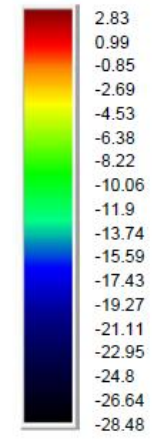
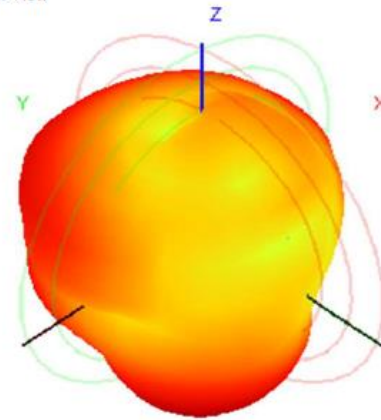
Back View



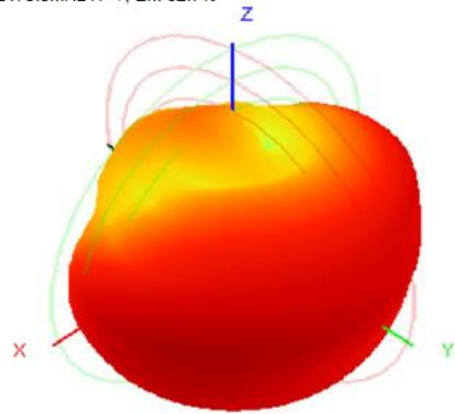
2460.0MHz H+V, Eff: 51.1%



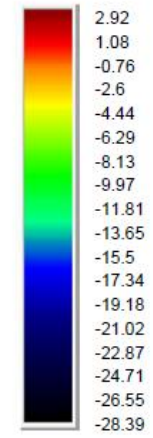
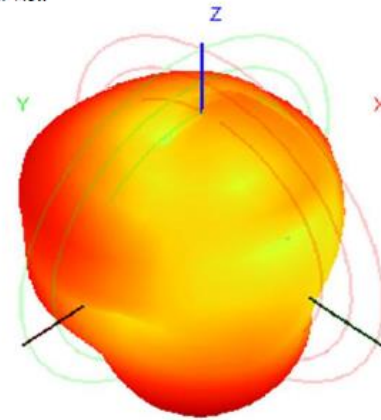
Back View



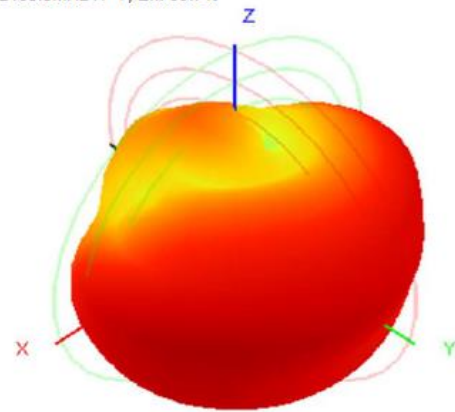
2470.0MHz H+V, Eff: 52.7%



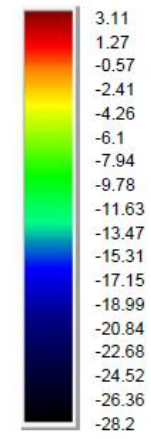
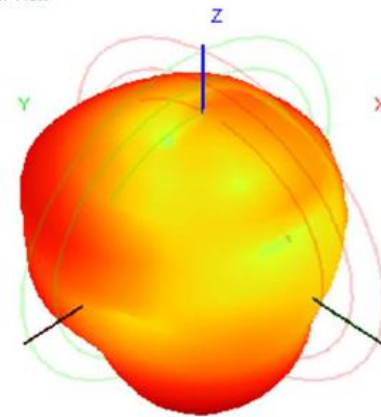
Back View



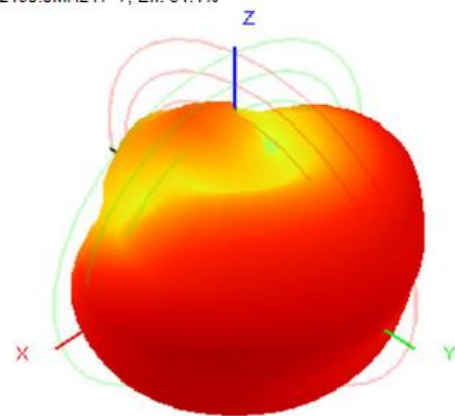
2480.0MHz H+V, Eff: 55.7%



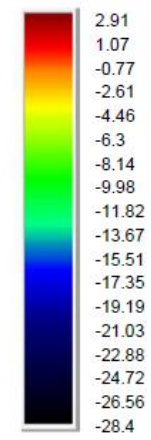
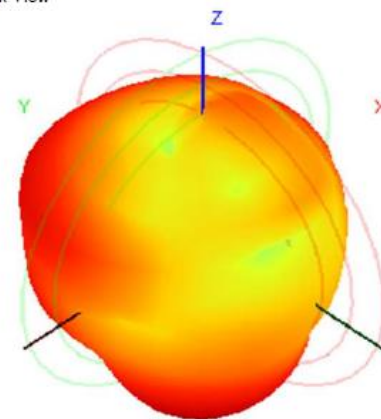
Back View



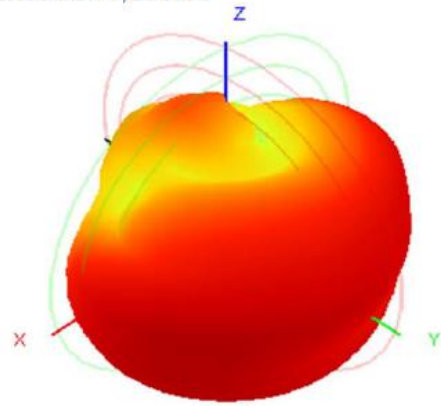
2490.0MHz H+V, Eff: 54.4%



Back View



2500.0MHz H+V, Eff: 51.9%



Back View

