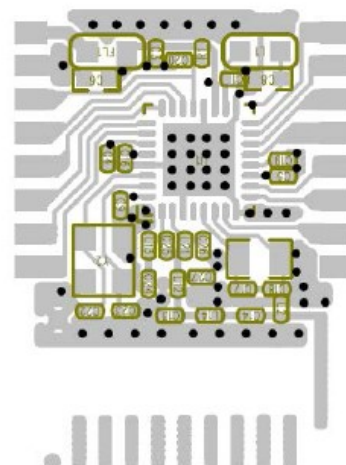
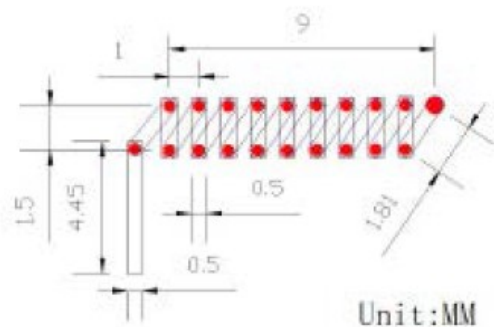
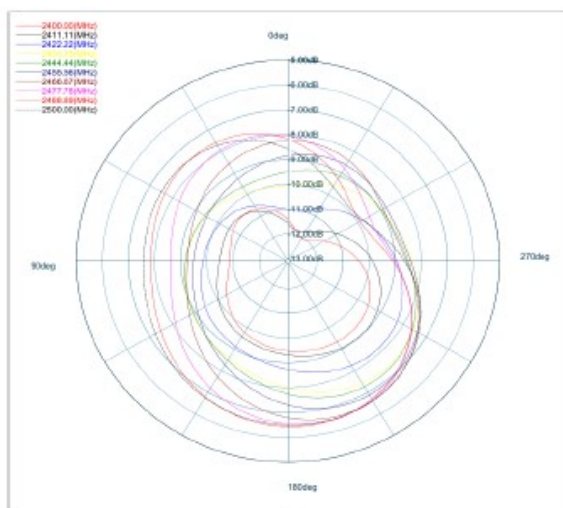
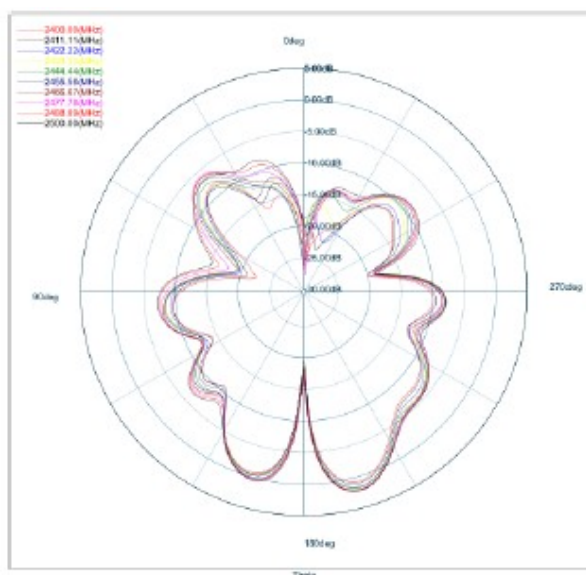
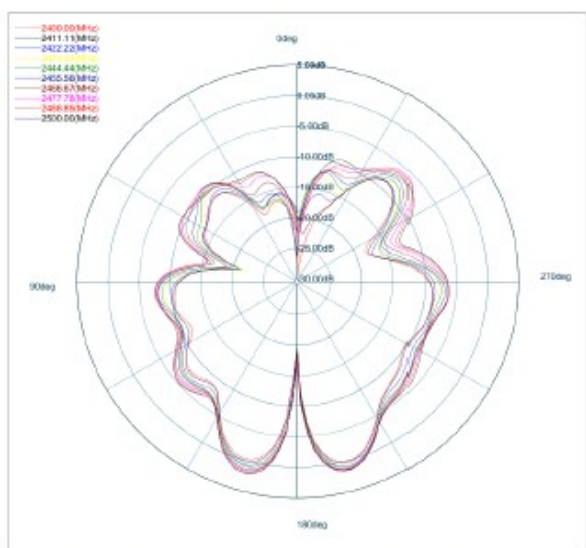


13. Antenna size, gain and test data information : (Antenna gain: 2.10dBi at 2450MHz)

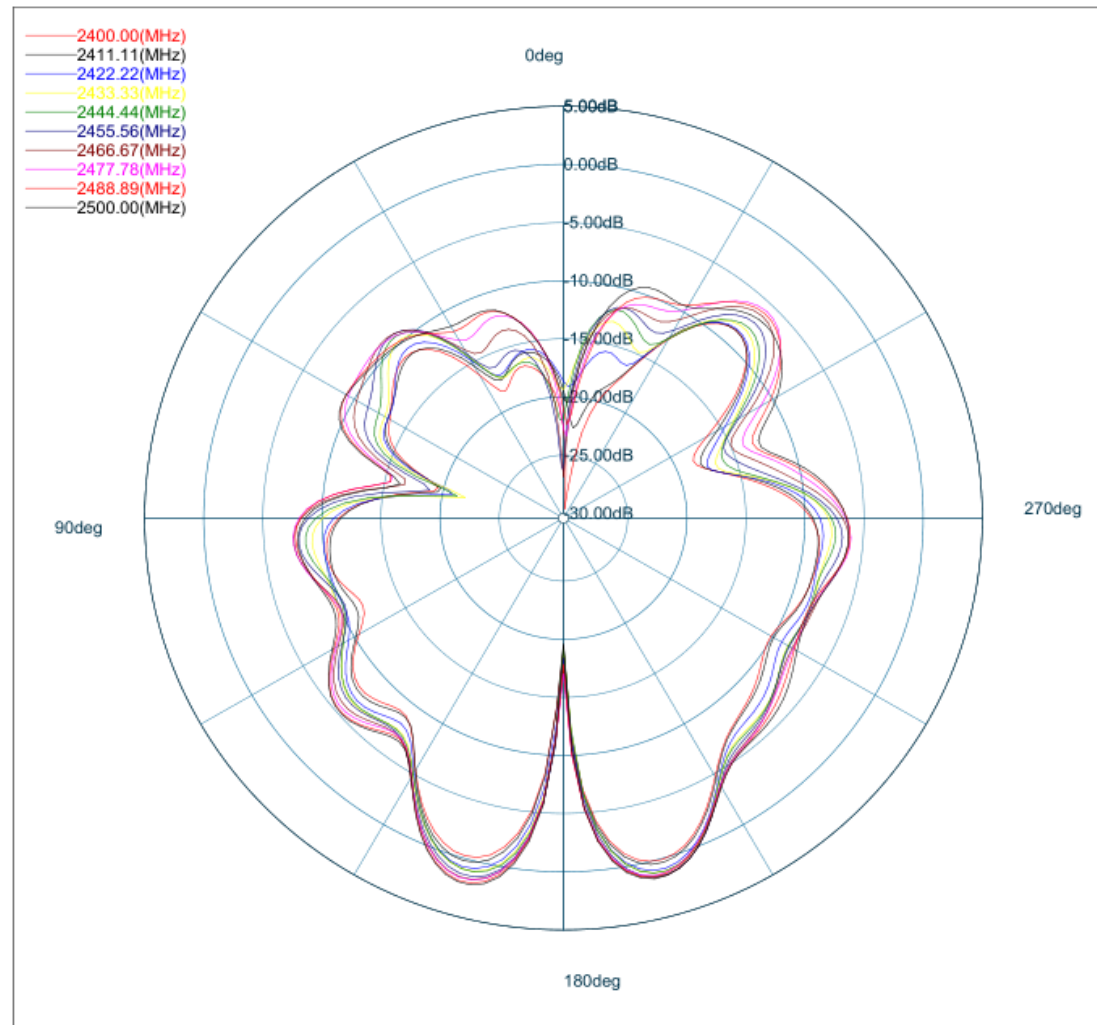


PCB version:HY-40R204P

Measuring frequency : 2.4-2.5GHZ

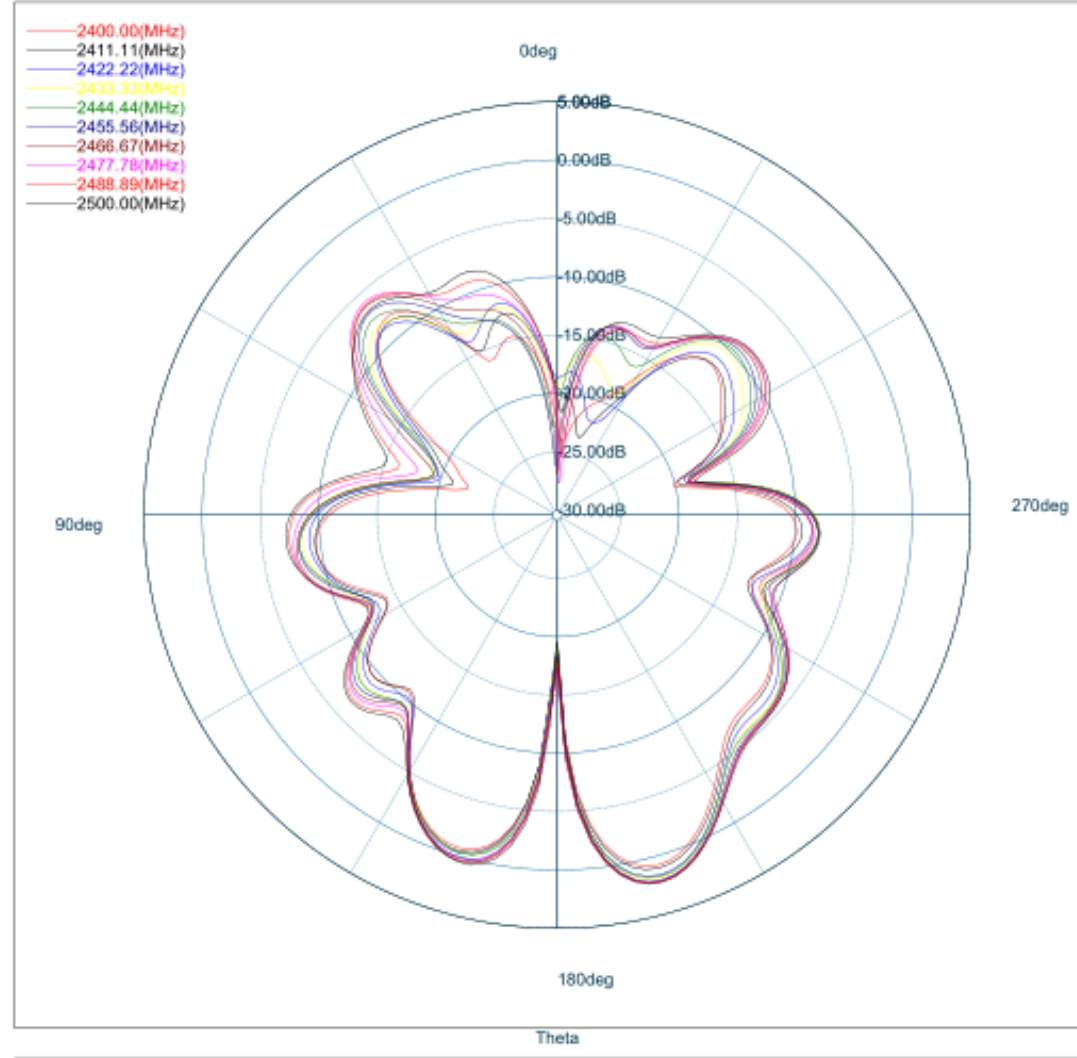


Passive Report



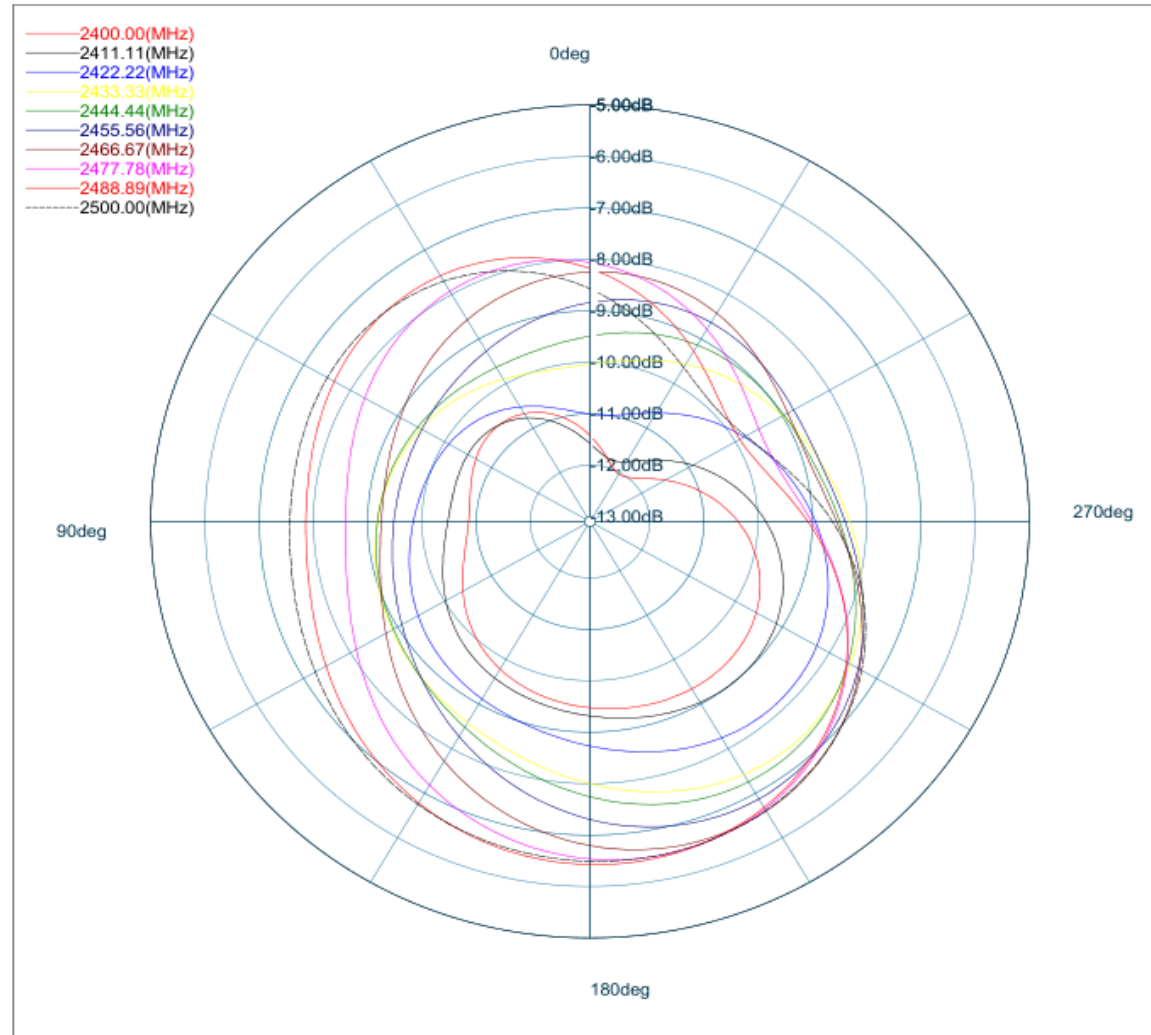
Directivity Measured Data Measuring Instrument: Agilent Technologies E5071B 300kHz-8.5GHz ENA Series Network Analyzer Laboratory System: MVG SG24LT (Satmio)

Passive Report



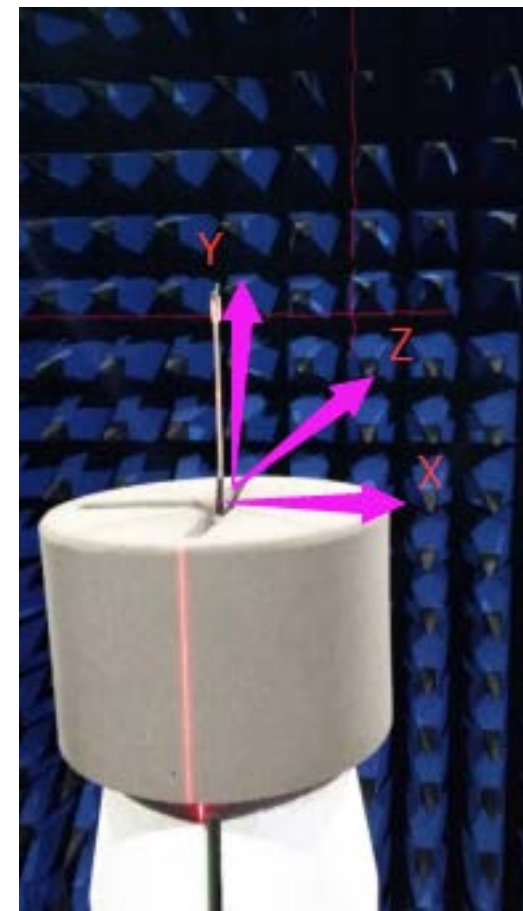
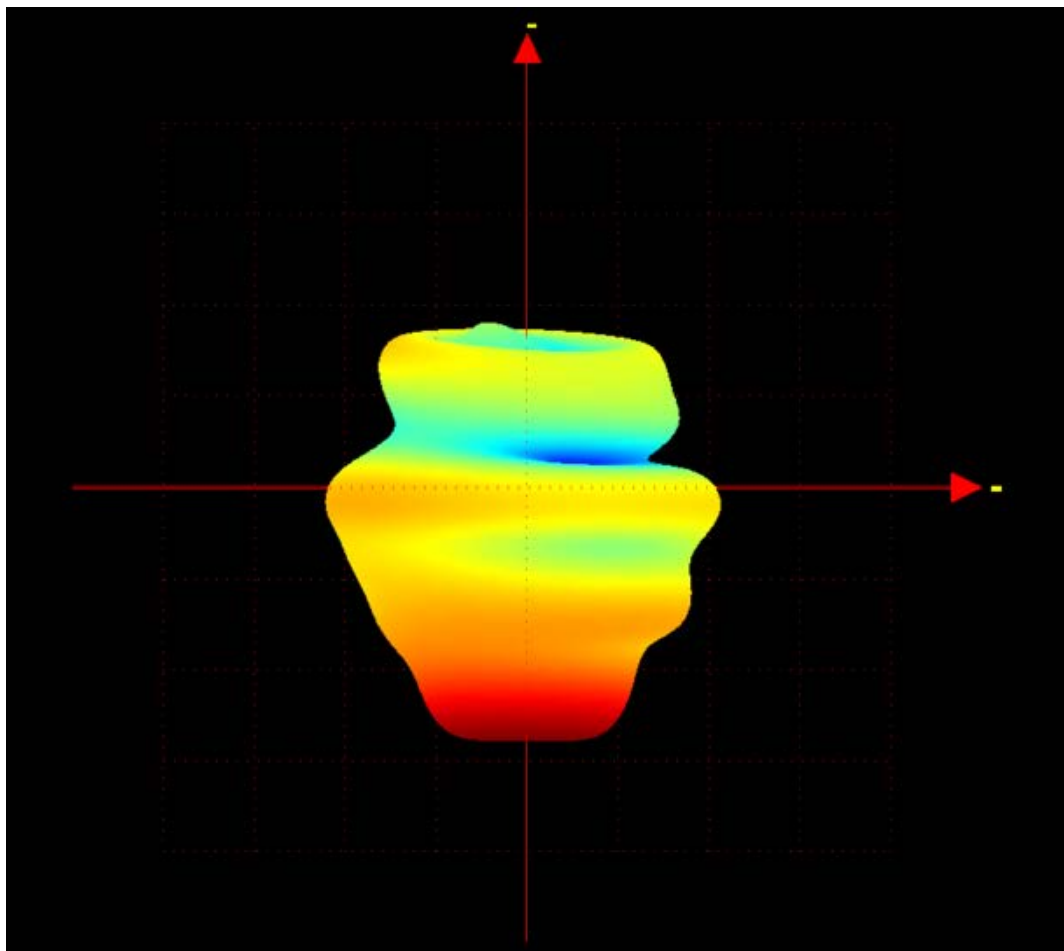
Directivity Measured Data Measuring Instrument: Agilent Technologies E5071B 300kHz-8.5GHz ENA Series Network Analyzer Laboratory System: MVG SG24LT (Satmio)

Passive Report



Directivity Measured Data Measuring Instrument: Agilent Technologies E5071B 300kHz-8.5GHz ENA Series Network Analyzer Laboratory System: MVG SG24LT (Satmio)

Passive Report



Directivity Measured Data Measuring Instrument: Agilent Technologies E5071B 300kHz-8.5GHz ENA Series Network Analyzer Laboratory System: MVG SG24LT (Satmio)