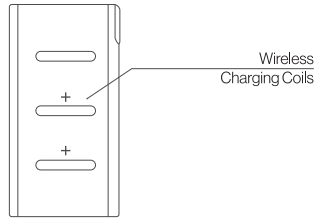


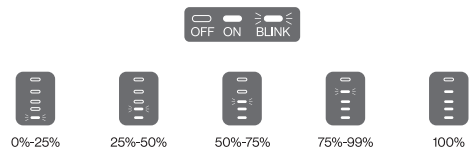
Smartphone positioning

Adjust the phone position to ensure proper alignment with the charging coils of the Wireless Charging Power Stand. Please look at the following diagram to check coils position. Please notice that not all Qi enabled smartphones have receiving coils in the same position.



LED indicators

- When the Charging Dock is connected to the power source, Charging Dock LED indicator will remain white.
- When connected to the Charging Dock, the Power Bank LED indicator will turn green.
- When in Charging Stand mode, Battery Status LED indicator will show charging process status.



- When in Power Bank mode, short press the button to check remaining power. Battery Status LED will show remaining power.
- When turning on the Power Bank the Power Bank LED indicator will turn GREEN.
- When placing your Qi enabled smartphone on the Power Bank to the Power Bank LED indicator will turn BLUE.

Safety information

- Please read this safety information carefully before using the product.
- Do not damage the power cable. Doing so may cause electric shock or fire.
 - Keep the product away from hot surfaces and sharp corners.
 - Do not carry or drag the product by its cable.
 - Do not use the product if one or more of its components are damaged or defective.
 - The product contains electronic parts. Keep your device dry. Humidity and liquids may damage the electronic circuits of the device and may cause electric shock and fire.
 - Do not place any metal object on the wireless charging power bank, as it may overheat and cause a fire.
 - Do not place any other object between the smartphone and the wireless charger.
 - Do not place any unplugged receiver on the wireless charger, as this can overheat the product and cause a fire.
 - Handle the charger with care. Do not drop your device. It may get damaged or may malfunction.
 - Do not disassemble, modify, or repair your charger. Any alteration or modification of your device may void the manufacturer's warranty. If your device needs servicing, contact the manufacturer.
 - Do not modify the product in any way. Any modification may increase the risk of injury.
 - Do not bite or suck on the device. Doing so may damage the device

- or result in an explosion or fire.
- Children may choke on small parts. If children use the device, make sure that they use it properly.
- If you notice strange smell or smoke coming from your device, stop using it immediately. Continuing to use the device may result in fire or explosion.
- Do not use the device for anything other than its intended use. The device may malfunction or may cause an electric shock or fire.
- Never dispose of the device in a fire.
- Avoid exposing your device to very cold or very hot temperatures. Extreme temperatures may damage the charger and reduce the lifespan of the device.
- Do not store magnetic cards near the product. Magnetic cards, including credit cards, phone cards and boarding passes, may be damaged by magnetic fields.
- Do not throw away the product with the household trash. The product needs to be recycled and disposed of responsibly.

Troubleshooting

If the product is not working properly please check the following troubleshooting. If your situation differs from normal conditions please try to solve the issue or call customer service.

For full troubleshooting visit our website at the page www.eggtronic.com/support/troubleshooting

Does the power outlet work? (normal conditions: **yes**)

Are you using the provided wall adapter? (normal conditions: **yes**)

Try charging your smartphone directly with the wall adapter using your cable. Does it work? (normal conditions: **yes**)

Is the cable correctly put in the adapter? (normal conditions: **yes**)

The Power Bank is correctly placed with its contacts on the Charging Dock? (normal conditions: **yes**)

Have the Power Bank or the Charging Dock suffered not voluntary actions, such as fall, impact, compression? (normal conditions: **no**)

Is your smartphone officially compatible with Qi Wireless Charging or equipped with a working Qi Receiver? (normal conditions: **yes**)

Is the smartphone correctly aligned with the coil position of the Power Stand as shown in the manual? (normal conditions: **yes**)

Is there any metal between your smartphone and the charger? (normal conditions: **no**)

The Power Bank is ON? (as a Power Bank) (normal conditions: **yes**)

Is the Power Bank sufficiently charged? (as a Power Bank) (normal conditions: **yes**)

Are you already charging another device? (as a Power Bank) (normal conditions: **no**) USB charging and wireless charging cannot be used simultaneously.

Limited warranty

For product warranty visit our website at the page www.eggtronic.com/support/download-area

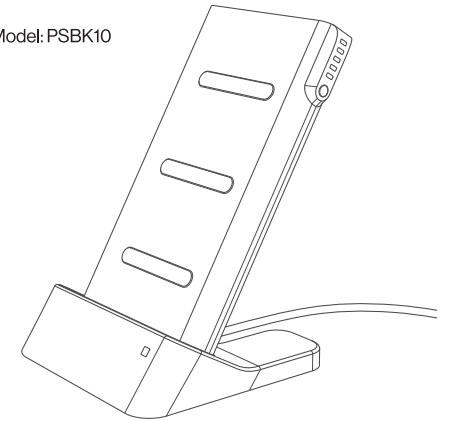
This product is meant for use only with appropriate devices. Please consult your device packaging to determine whether this product is compatible with your particular device. Manufacturer will not be responsible for any damages you or any third party that may suffer as a result of use, intended or unintended, or misuse of this product. You agree to indemnify Manufacturer for any resulting injury or damage if the product is used with an unintended device. Product names, logos, brands and other trademarks referred to within this product are property of their respective trademark holders. These trademark holders are not affiliated with our company, our products or our website. They do not sponsor or endorse our materials.



EGGTRONIC

4-in-1 Wireless Charging Power Stand

Model: PSBK10



Eggtronic Engineering Srl
Address: Via Giorgio Campagna 8 41126 Modena (MO) Italy
Call Eggtronic customer support before returning to retailer
(844) 282-2770

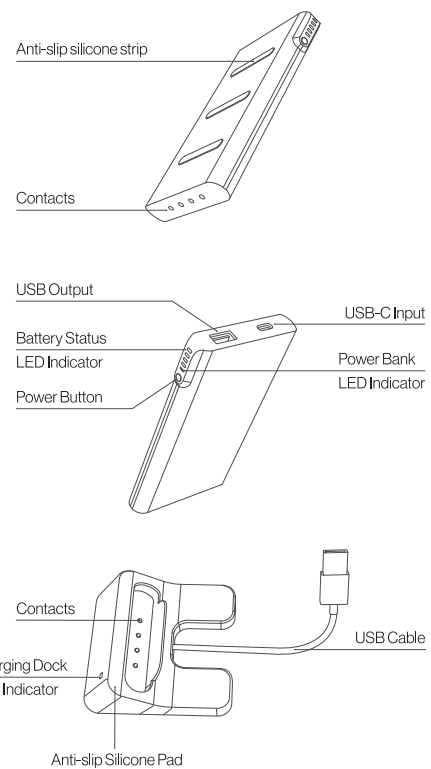
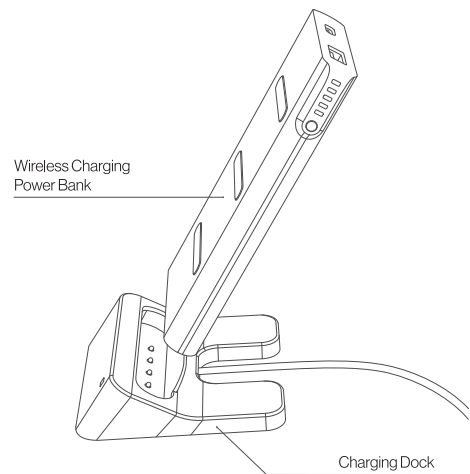
USER MANUAL

Package Content

Wireless Charging Power Bank | Charging Dock | Power Supply USB Type-C cable (3 ft) | User Manual

Product Overview

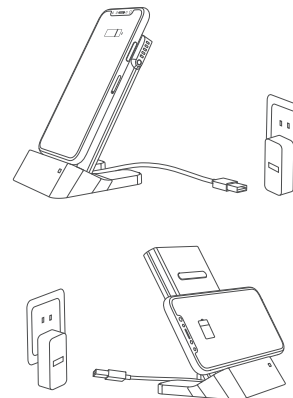
Thanks for choosing Eggtronic Wireless Charging Power Stand. PSBK10 is a 4-in-1 charger, that can be used as a Wireless Charging Stand, a Wireless Charging or USB Power Bank, or as Wireless Charging Pad. Works great with all Qi-enabled smartphones. Please read the user manual before using the product.



How to Use

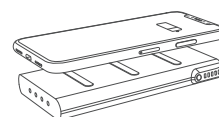
1) Wireless Charging Stand

When in Charging Stand mode, you can charge your smartphone both horizontally or vertically.



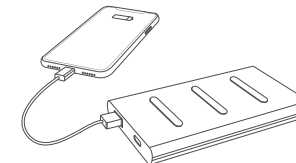
2) Wireless Charging Power Bank

While on the go, you can charge your smartphone by laying your phone on the Power Bank.



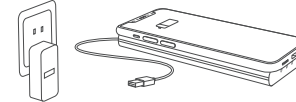
3) USB Power Bank

When you are on the go you can also charge your smartphone or other devices with a USB cable.



4) Wireless Charging Pad

You can use your PSBK10 also as a Wireless Charging Pad, by connecting the Power Bank directly to the power adapter with the included USB-C cable.



NOTE

- Not all Qi enabled smartphones have receiving coils in the same position. Adjust the phone position to ensure proper alignment. See diagram in the next pages.
- USB charging and Qi wireless charging cannot be used simultaneously. When PSBK10 is connected to the charging dock, USB charging is disabled.

This equipment has been tested and found to comply with the limits for a class B and WPC device, pursuant to Part 15 and Part 18 of the FCC Rules. These limits are designed to provide reasonable protection against harmful interference in a residential installation. This equipment generates, uses and can radiate radio frequency energy and, if not installed and used in accordance with the instructions, may cause harmful interference to radio communications. However, there is no guarantee that interference will not occur in a particular installation. If this equipment does cause harmful interference to radio or television reception, which can be determined by turning the equipment off and on, the user is encouraged to try to correct the interference by one or more of the following measures:

- Reorient or relocate the receiving antenna.
- Increase the separation between the equipment and receiver.
- Connect the equipment into an outlet on a circuit different from that to which the receiver is connected.
- Consult the dealer or an experienced radio/TV technician for help.

CAUTION: Changes or modifications not expressly approved by the party responsible for compliance could void the user's authority to operate the product.

Instructions

AS A WIRELESS CHARGING STAND

- Connect USB Plug into Power Supply.
- Place the Power Bank on the Charging Dock to charge it.
- Place your Qi enabled smartphone on the Power Stand to charge your phone.

AS A WIRELESS POWER BANK

- When on the go, turn on the Power Bank by long pressing the button for three seconds.
- Place your Qi enabled smartphone on the Power Bank to charge it.

AS A USB POWER BANK

- When on the go, turn on the Power Bank by long pressing the button for three seconds.
- Connect your cable to the USB-A output and the other end to your device to charge it.

AS A WIRELESS CHARGING PAD

- Connect the USB-C cable to the Power Supply and the other end to your Power Stand USB-C input.
- Place your Qi enabled smartphone on the Power Stand to charge your phone.

NOTE PSBK10 features pass-through functionality while connected to a power source. Power is sent to your smartphone first, and then to the Power Bank.

Specifications

POWER BANK

USB-C Input: DC 5V/2A; 9V/1.67A
USB Output: DC 5V/2.4A max
Wireless Output: 10W max
Size: 150 x 77 x 15,6 mm
Battery capacity: 10000 mAh
Soft touch finish

CHARGING DOCK

Input: DC 5V/2A, DC 9V/1.67A
Size: 94 x 94 x 24,3 mm

POWER SUPPLY

Quick Charge 3.0 UL
Output: 6-9V 2A / 9V-12V 1.5A

Operation Frequency: 112.8-156.7kHz
H-filed strength: -2.34dBuA/m @ 10m distance (for EU)