

# TEST REPORT

**Reference No.** : WTS17S1296893-1E  
**FCC ID** : 2ANP2-TS00  
**Applicant** : Shenzhen Auzone Technology Co.,Ltd  
**Address** : 404, fuyuan waterfront building, 47 district, baoan district, shenzhen, China  
**Manufacturer** : ShenZhen Porcsi Technology Co.,Ltd.  
**Address** : 2 / f, building 10, jianyida science park, shiyan, baoan district, shenzhen city, guangdong province, China  
**Product** : Tire Pressure Sensor  
**Model(s)** : Pro-Sensor(315MHz)  
**Standards** : FCC CFR47 Part 15 Section 15.231: 2017  
**Date of Receipt sample** : 2017-12-01  
**Date of Test** : 2017-12-02 to 2018-1-03  
**Date of Issue** : 2018-1-04  
**Test Result** : **Pass**

**Remarks:**

The results shown in this test report refer only to the sample(s) tested, this test report cannot be reproduced, except in full, without prior written permission of the company. The report would be invalid without specific stamp of test institute and the signatures of compiler and approver.

**Prepared By:**

**Waltek Services (Shenzhen) Co., Ltd.**

Address: 1/F., Fukangtai Building, West Baima Road, Songgang Street, Baoan District, Shenzhen, Guangdong, China

Tel :+86-755-83551033

Fax:+86-755-83552400

Compiled by:

*Ford Wang*

Ford Wang /Test Engineer

Approved by:

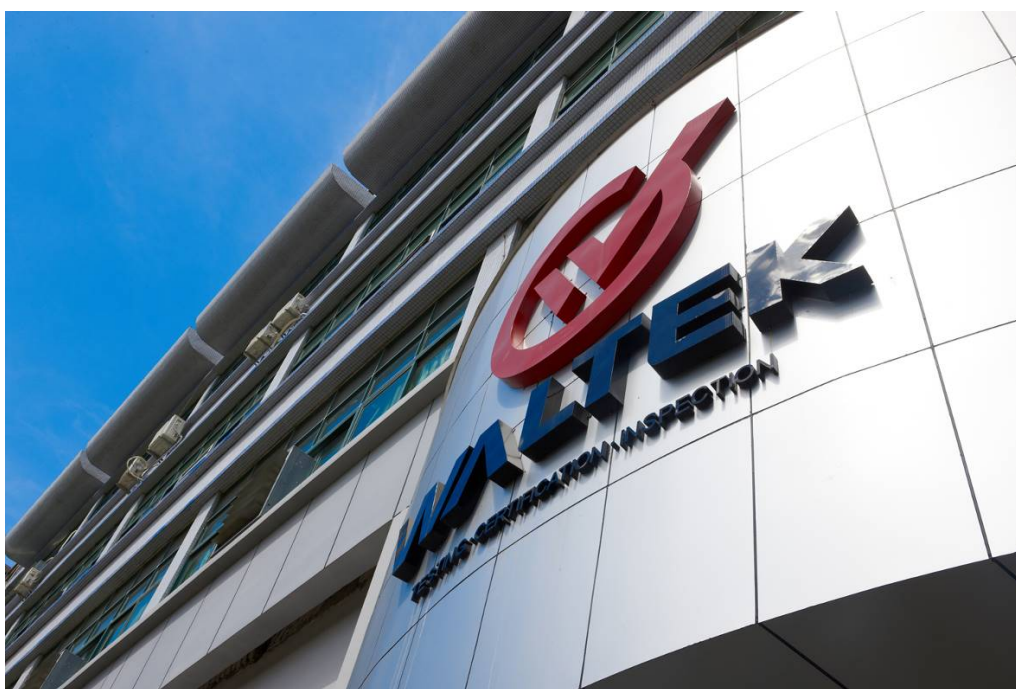


*Philo Zhong*

Philo Zhong / Manager

## 1 Laboratories Introduction

**Waltek Services (Shenzhen) Co., Ltd** is a professional third-party testing and certification laboratory with multi-year product testing and certification experience, established strictly in accordance with ISO/IEC 17025 requirements, and accredited by ILAC (International Laboratory Accreditation Cooperation) member. A2LA (American Association for Laboratory Accreditation) of USA, Meanwhile, Waltek has got recognition as registration and accreditation laboratory from EMSD (Electrical and Mechanical Services Department), and American Energy star, FCC(The Federal Communications Commission), CEC(California energy efficiency), IC(Industry Canada). It's the strategic partner and data recognition laboratory of international authoritative organizations, such as Intertek(ETL-SEMKO), TÜV Rheinland, TÜV SÜD, etc.



Waltek Services (Shenzhen) Co., Ltd is one of the largest and the most comprehensive third party testing laboratory in China. Our test capability covered four large fields: safety test. Electro Magnetic Compatibility (EMC), and energy performance, wireless radio. As a professional, comprehensive, justice international test organization, we still keep the scientific and rigorous work attitude to help each client satisfy the international standards and assist their product enter into globe market smoothly.

**Test Facility:****A. Accreditations for Conformity Assessment (International)**

Country/Region	Accreditation Body	Scope	Note
USA	<b>A2LA</b> <b>(Certificate No.: 4243.01)</b>	FCC ID \ DOC \ VOC	1
Canada		IC ID \ VOC	2
Japan		MIC-T \ MIC-R	-
Europe		EMCD \ RED	-
Taiwan		NCC	-
Hong Kong		OFCA	-
Australia		RCM	-
India	<b>International Services</b>	WPC	-
Thailand		NTC	-
Singapore		IDA	-
Note: 1. FCC Designation No.: CN1201. Test Firm Registration No.: 523476. 2. IC Canada Registration No.: 7760A			

**B. TCBs and Notify Bodies Recognized Testing Laboratory.**

Recognized Testing Laboratory of ...	Notify body number
TUV Rheinland	Optional.
Intertek	
TUV SUD	
SGS	
Phoenix Testlab GmbH	0700
Element Materials Technology Warwick Ltd	0891
Timco Engineering, Inc.	1177
Eurofins Product Service GmbH	0681

## 2 Contents

	Page
<b>COVER PAGE</b> .....	<b>1</b>
<b>1 LABORATORIES INTRODUCTION</b> .....	<b>2</b>
<b>2 CONTENTS</b> .....	<b>4</b>
<b>3 REPORT REVISION HISTORY</b> .....	<b>5</b>
<b>4 GENERAL INFORMATION</b> .....	<b>6</b>
4.1    GENERAL DESCRIPTION OF E.U.T.....	6
4.2    DETAILS OF E.U.T.....	6
4.3    TEST MODE.....	6
<b>5 EQUIPMENT USED DURING TEST</b> .....	<b>7</b>
5.1    EQUIPMENTS LIST.....	7
5.2    MEASUREMENT UNCERTAINTY.....	7
<b>6 TEST SUMMARY</b> .....	<b>8</b>
<b>7 RADIATED SPURIOUS EMISSIONS</b> .....	<b>9</b>
7.1    EUT OPERATION.....	9
7.2    TEST SETUP.....	10
7.3    SPECTRUM ANALYZER SETUP.....	11
7.4    TEST PROCEDURE.....	12
7.5    SUMMARY OF TEST RESULTS.....	13
<b>8 PERIODIC OPERATION</b> .....	<b>14</b>
<b>9 EMISSION BANDWIDTH</b> .....	<b>16</b>
9.1    TEST PROCEDURE.....	16
9.2    TEST RESULT.....	16
<b>10 ANTENNA REQUIREMENT</b> .....	<b>17</b>
<b>11 RF EXPOSURE</b> .....	<b>18</b>
<b>12 PHOTOGRAPHS –TEST SETUP PHOTOS AND EUT PHOTOS</b> .....	<b>19</b>

### 3 Report Revision History

Test report No.	Date of Receipt sample	Date of Test	Date of Issue	Purpose	Comment	Approved
WTS17S1296893-1E	2017-12-01	2017-12-02 to 2018-1-03	2018-1-04	original	-	Valid

## 4 General Information

### 4.1 General Description of E.U.T.

Product:	Tire Pressure Sensor
Model(s):	Pro-Sensor(315MHz)
Model Difference:	N/A
Type of Modulation:	FSK
Frequency Range:	315MHz
Antenna installation:	Internal permanent antenna
Antenna Gain:	-4.96dBi
Hardware Version:	Pre_Sensor_v0.9
Software Version:	V1.0

### 4.2 Details of E.U.T.

Ratings:	DC 3.0V, 350mAh by Manganese dioxide Lithium Battery
----------	--

### 4.3 Test Mode

All test mode(s) and condition(s) mentioned were considered and evaluated respectively by performing full tests, the worst data were recorded and reported.

Test mode	Test channel
Transmitting	315MHz

## 5 Equipment Used during Test

### 5.1 Equipments List

3m Semi-anechoic Chamber for Radiation Emissions						
Item	Equipment	Manufacturer	Model No.	Serial No.	Last Calibration Date	Calibration Due Date
1	Spectrum Analyzer	R&S	FSP30	100091	2017-04-29	2018-04-28
2	Broad-band Horn Antenna(1-18GHz)	SCHWARZBECK	BBHA 9120 D	667	2017-04-09	2018-04-08
3	Broadband Preamplifier	COMPLIANCE DIRECTION	PAP-1G18	2004	2017-04-13	2018-04-12
4	Coaxial Cable (above 1GHz)	Top	1GHz-18GHz	EW02014-7	2017-04-13	2018-04-12
5	Spectrum Analyzer	R&S	FSP40	100501	2017-10-20	2018-10-19
6	Broad-band Horn Antenna(18-40GHz)	SCHWARZBECK	BBHA 9170	BBHA9170651	2017-10-25	2018-10-24
7	Microwave Broadband Preamplifier (18-40GHz)	SCHWARZBECK	BBV 9721	100472	2017-10-25	2018-10-24
8	Cable	Top	18-40GHz	-	2017-10-25	2018-10-24
3m Semi-anechoic Chamber for Radiation Emissions						
Item	Equipment	Manufacturer	Model No.	Serial No	Last Calibration Date	Calibration Due Date
1	Test Receiver	R&S	ESCI	101296	2017-04-13	2018-04-12
2	Trilog Broadband Antenna	SCHWARZBECK	VULB9160	9160-3325	2017-04-13	2018-04-12
3	Active Loop Antenna	Beijing Dazhi	ZN30900A	-	2017-04-09	2018-04-08
4	Amplifier	ANRITSU	MH648A	M43381	2017-04-13	2018-04-12
5	Cable	HUBER+SUHNER	CBL2	525178	2017-04-13	2018-04-12
6	Coaxial Cable (below 1GHz)	Top	TYPE16(13M)	-	2017-09-12	2018-09-11
RF Conducted Testing						
Item	Equipment	Manufacturer	Model No.	Serial No.	Last Calibration Date	Calibration Due Date
1	Spectrum Analyzer	R&S	FSP30	100091	2017-04-29	2018-04-28

### 5.2 Measurement Uncertainty

Test Item	Frequency Range	Uncertainty	Note
Radiated Spurious Emissions	30MHz~1000MHz	±5.03dB	(1)
	1000M~6000MHz	± 5.47 dB	(1)

(1)This uncertainty represents an expanded uncertainty expressed at approximately the 95% confidence level using a coverage factor of k=2.

## 6 Test Summary

Test Items	Test Requirement	Result
Conducted Emissions	15.207	N/A
Radiated Spurious Emissions	15.205(a) 15.209 15.231(a)	Pass
Periodic Operation	15.231(a)	Pass
Emission Bandwidth	15.231(c)	Pass
Antenna Requirement	15.203	Pass
RF Exposure	1.1307(b)(1)	Pass
Note: Pass=Compliance; NC=Not Compliance; NT=Not Tested; N/A=Not Applicable		



## 7 Radiated Spurious Emissions

Test Requirement: FCC Part15 Paragraph 15.231(a), 15.209, 15.205

Test Method: ANSI C63.10: 2013

Test Result: PASS

Measurement Distance: 3m

Limit:

Fundamental Frequency (MHz)	Field Strength of Fundamental (uV/m)	Field Strength of Fundamental (dBuV/m)	Field Strength of Spurious Emission (uV/m)	Field Strength of Spurious Emission (dBuV/m)
44.66-40.70	2250	67	225	47
70-130	1250	62	125	42
130-174	1250 to 3750*	62 to 71.48*	125 to 375*	42 to 51.48*
174-260	3750	71.48	375	51.48
260-470	3750 to 12500*	71.48 to 81.94*	375 to 1250*	51.48 to 61.94*
Above 470	12500	81.94	1250	61.94
* linear interpolations				

### 7.1 EUT Operation

Operating Environment :

Temperature: 23.5 °C

Humidity: 51.1 % RH

Atmospheric Pressure: 101.2kPa

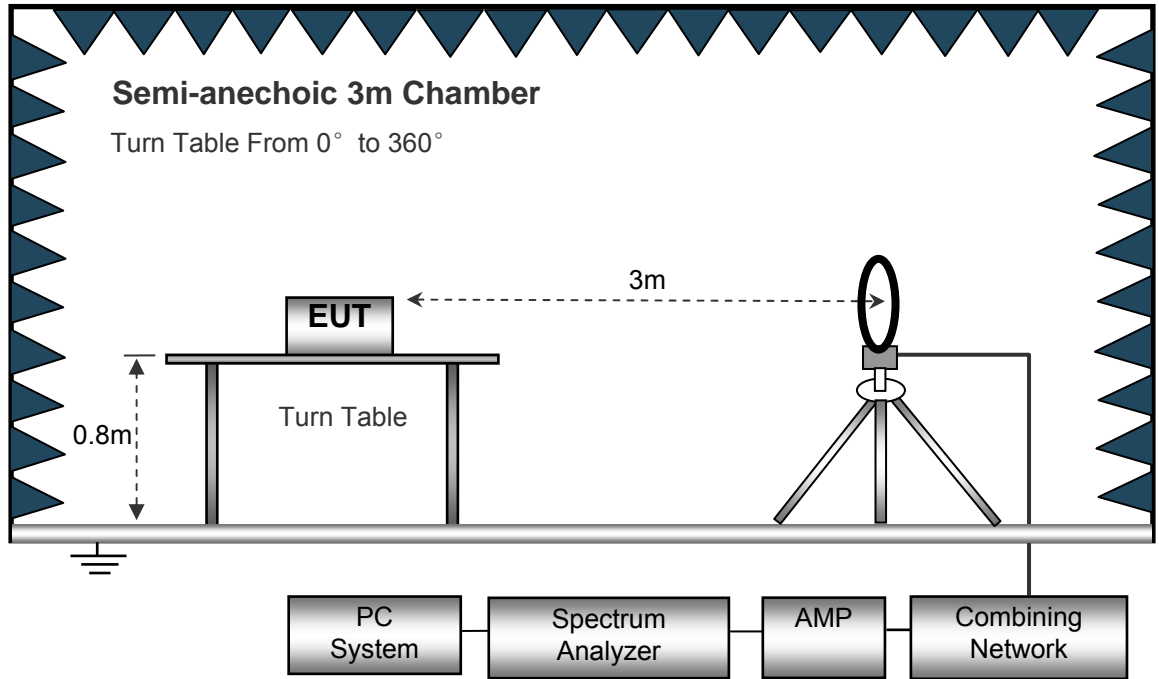
EUT Operation :

The test was performed in Transmitting mode, the test data were shown in the report.

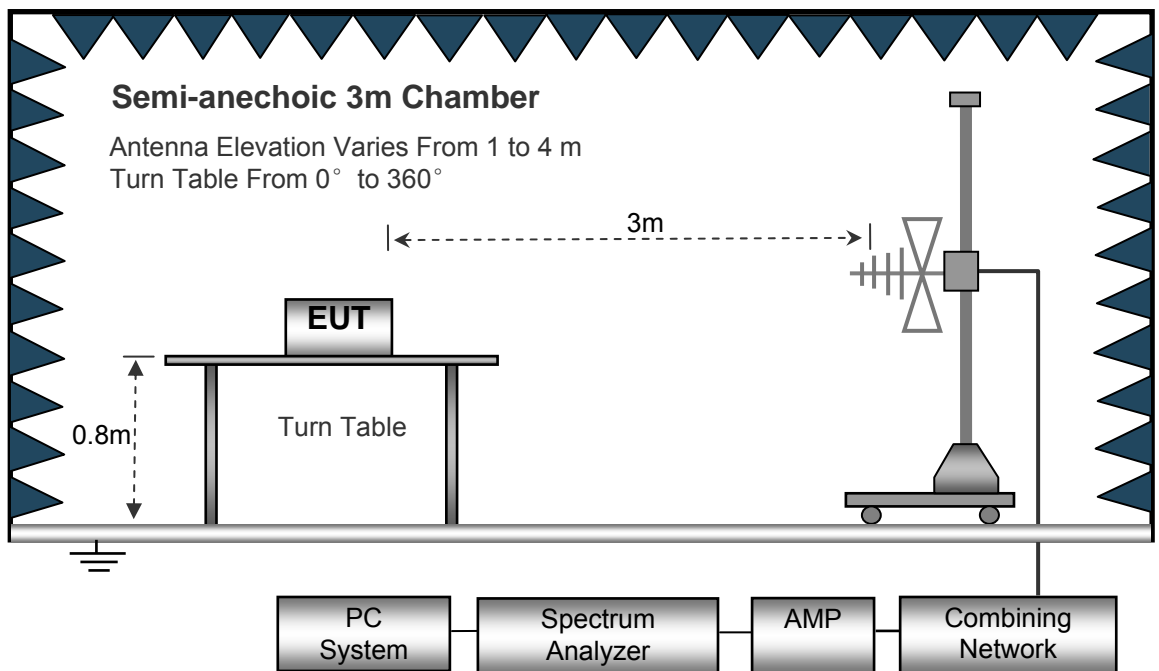
### 7.2 Test Setup

The radiated emission tests were performed in the 3m Semi- Anechoic Chamber test site, using the setup accordance with the ANSI C63.10.

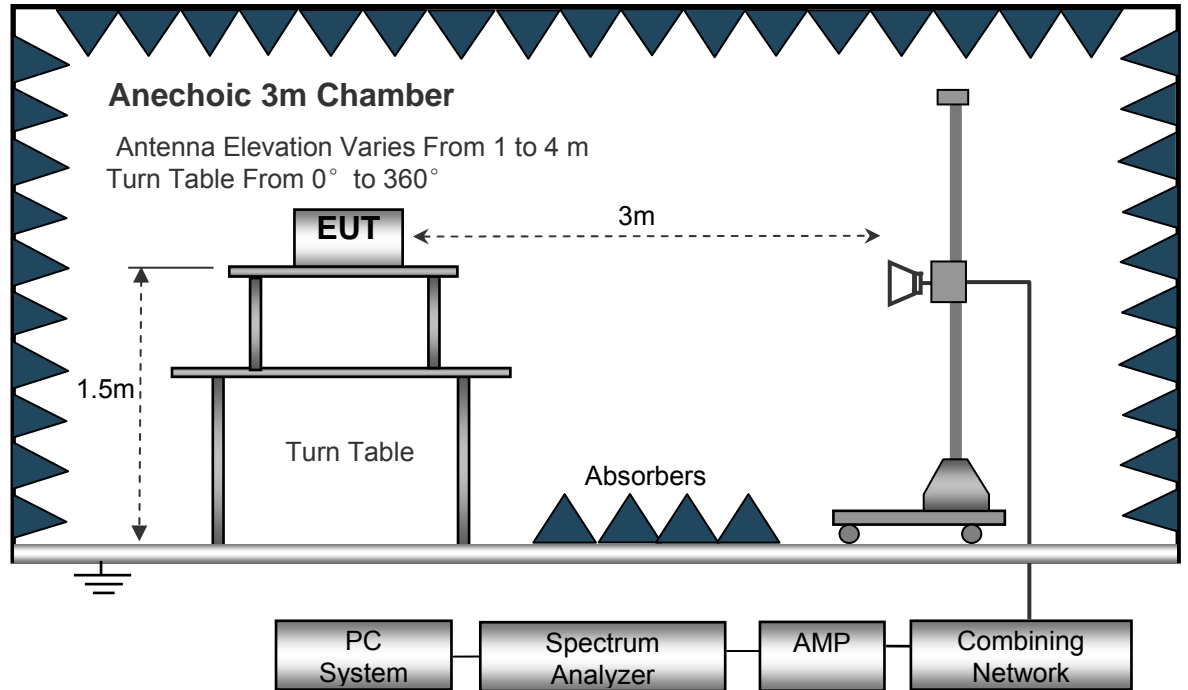
The test setup for emission measurement below 30MHz.



The test setup for emission measurement from 30 MHz to 1 GHz.



The test setup for emission measurement above 1 GHz.



### 7.3 Spectrum Analyzer Setup

Below 30MHz

Sweep Speed .....Auto  
 IF Bandwidth.....10kHz  
 Video Bandwidth.....10kHz  
 Resolution Bandwidth.....10kHz

30MHz ~ 1GHz

Sweep Speed .....Auto  
 Detector .....PK  
 Resolution Bandwidth.....100kHz  
 Video Bandwidth.....300kHz

Above 1GHz

Sweep Speed .....Auto  
 Detector .....PK  
 Resolution Bandwidth.....1MHz  
 Video Bandwidth.....3MHz

## 7.4 Test Procedure

1. The EUT is placed on a turntable. For below 1GHz, the EUT is 0.8m above ground plane; For above 1GHz, the EUT is 1.5m above ground plane.
2. The turntable shall be rotated for 360 degrees to determine the position of maximum emission level.
3. EUT is set 3m away from the receiving antenna, which is moved from 1m to 4m to find out the maximum emissions. The spectrum was investigated from the lowest radio frequency signal generated in the device, without going below 9 kHz, up to the tenth harmonic of the highest fundamental frequency or to 40 GHz, whichever is lower.
4. Maximum procedure was performed on the six highest emissions to ensure EUT compliance.
5. And also, each emission was to be maximized by changing the polarization of receiving antenna both horizontal and vertical.
6. Repeat above procedures until the measurements for all frequencies are complete.
7. The radiation measurements are tested under 3-axes(X, Y, Z) position(X denotes lying on the table, Y denotes side stand and Z denotes vertical stand), After pre-test, It was found that the worse radiation emission was get at the X position. So the data shown was the X position only.

## 7.5 Summary of Test Results

### Test Frequency: 9 KHz~30 MHz

The measurements were more than 20 dB below the limit and not reported.

### Test Frequency: 30MHz ~ 5GHz

#### Test Channel: 315MHz

Frequency	Receiver Reading (PK)	Turn table Angle	RX Antenna		Corrected Factor	Corrected Amplitude (PK)	FCC Part 15.231/15.209/205	
			Height	Polar			Limit	Margin
(MHz)	(dB $\mu$ V)	Degree	(m)	(H/V)	(dB/m)	(dB $\mu$ V/m)	(dB $\mu$ V/m)	(dB)
315.00	81.63	317	1.1	H	-7.31	74.32	95.62	-21.30
315.00	81.28	309	1.1	V	-7.31	73.97	95.62	-21.65
630.00	58.74	46	1.5	H	0.04	58.78	75.62	-16.84
630.00	59.32	119	1.9	V	0.04	59.36	75.62	-16.26
1825.84	49.26	129	1.4	H	-16.38	32.88	74.00	-41.12
1825.84	50.87	317	1.6	V	-16.38	34.49	74.00	-39.51
2639.71	52.34	195	1.8	H	-14.87	37.47	74.00	-36.53
2639.71	53.29	268	1.8	V	-14.87	38.42	74.00	-35.58

AV = Peak +20Log<sub>10</sub> (duty cycle) =PK+ (-8.23) [refer to section 8 for more detail]

Frequency	PK	RX Antenna Polar	Duty cycle Factor	Calculated AV	FCC Part 15.231/209/205	
					Limit	Margin
(MHz)	(dB $\mu$ V/m)	(H/V)	(dB)	(dB $\mu$ V/m)	(dB $\mu$ V/m)	(dB)
315.00	74.32	H	-9.15	65.17	75.62	-10.45
315.00	73.97	V	-9.15	64.82	75.62	-10.80
630.00	58.78	H	-9.15	49.63	55.62	-5.99
630.00	59.36	V	-9.15	50.21	55.62	-5.41
1825.84	32.88	H	-9.15	23.73	54.00	-30.27
1825.84	34.49	V	-9.15	25.34	54.00	-28.66
2639.71	37.47	H	-9.15	28.32	54.00	-25.68
2639.71	38.42	V	-9.15	29.27	54.00	-24.73

## 8 Periodic Operation

The duty cycle was determined by the following equation:

To calculate the actual field intensity, The duty cycle correction factor in decibel is needed for later use and can be obtained from following conversion

$$\text{Duty Cycle(\%)} = \text{Total On interval in a complete pulse train} / \text{Length of a complete pulse train} * \%$$

$$\text{Duty Cycle Correction Factor(dB)} = 20 * \text{Log}_{10}(\text{Duty Cycle(\%)})$$

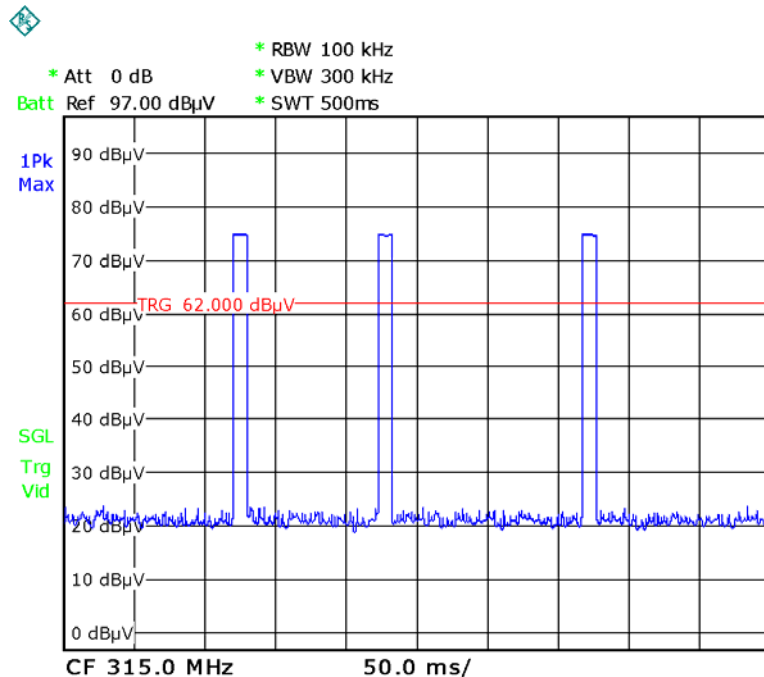
Total transmission time(ms)	3*10.2=30.6
Length of a complete transmission period(ms)	200
Duty Cycle(%)	15.3
Duty Cycle Correction Factor(dB)	-16.31

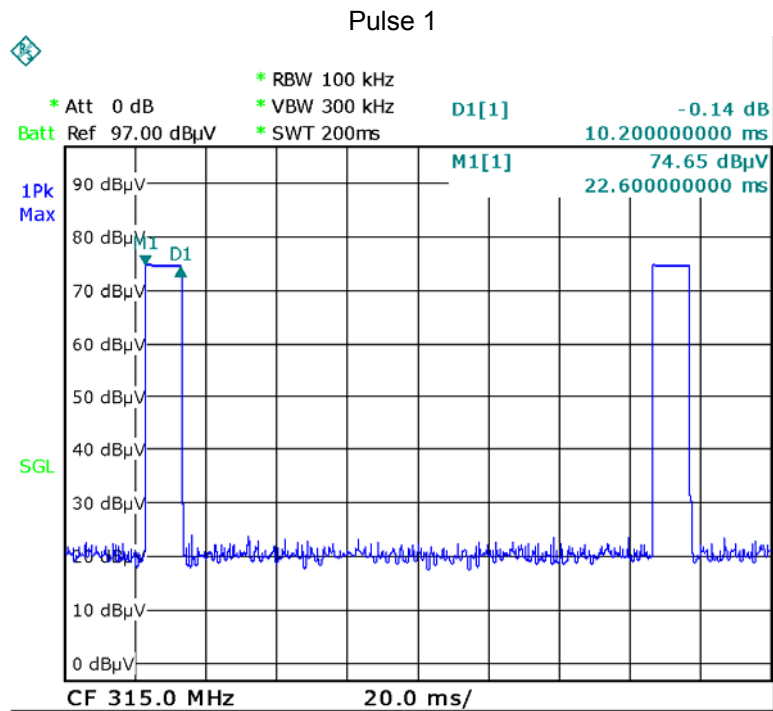
Refer to the duty cycle plot (as below), This device meets the FCC requirement.

Length of a complete pulse train:

Remark: FCC part15.35(c) required that a complete pulse train is more than 0.1 seconds, the measured field strength shall be determined from the average absolute voltage during a 0.1 second interval during which the field strength is at its maximum value.

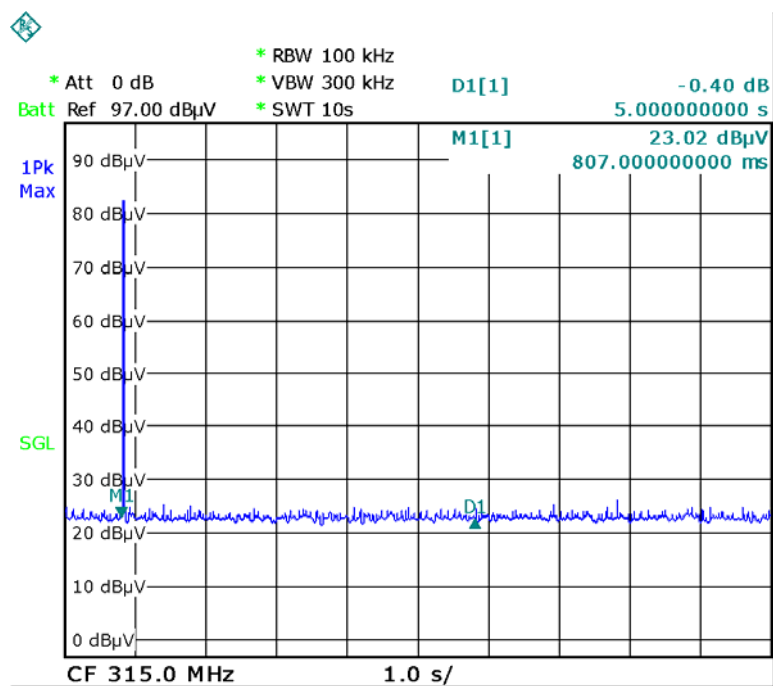
### Test Plot:





FCC Part15.231 (a) (1) A manually operated transmitter shall employ a switch that will automatically deactivate the transmitter within not more than 5 seconds of being released.

(2)A transmitter activated automatically shall cease transmission within 5 seconds after activation.



## 9 Emission Bandwidth

Test Requirement:	FCC Part15.231(c)
Test Method:	FCC Part15.231(c)
Limit	The bandwidth of the emission shall be no wider than 0.25% of the centre frequency for devices operating above 70 MHz and below 900 MHz. For devices operating above 900 MHz, the emission shall be no wider than 0.5% of the centre frequency.

### 9.1 Test Procedure

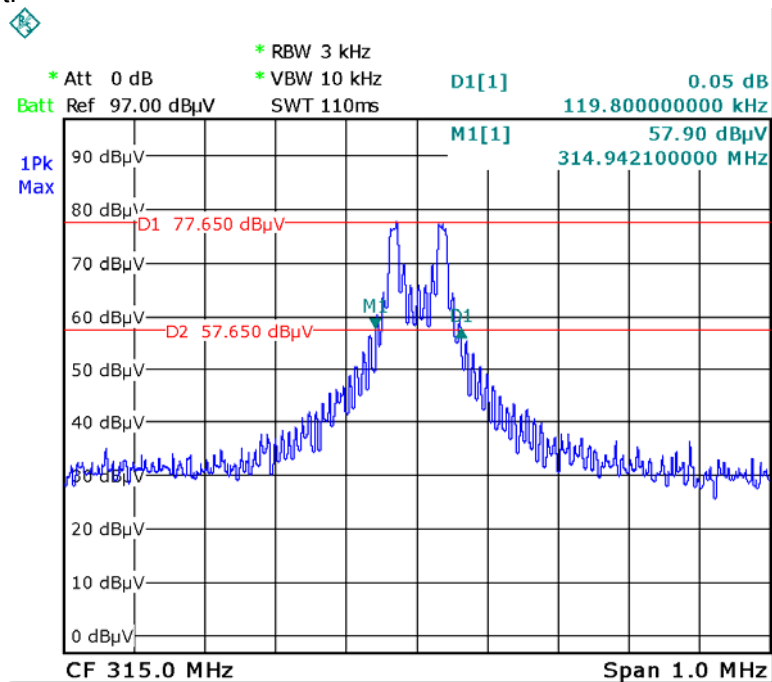
1. The transmitter output (antenna port) was connected to the spectrum analyzer. EUT and its simulators are placed on a table, let EUT working in test mode, then test it.
2. The bandwidth of the fundamental frequency was measured by spectrum analyser with 3 kHz RBW and 10 kHz VBW. The 20 dB bandwidth was recorded.

### 9.2 Test Result

Frequency (MHz)	20dB Bandwidth Emission(KHz)	Limit (KHz)	Result
315	119.80	787.5	Compliance

Limit=Center Frequency\*0.25%

Test Plot:





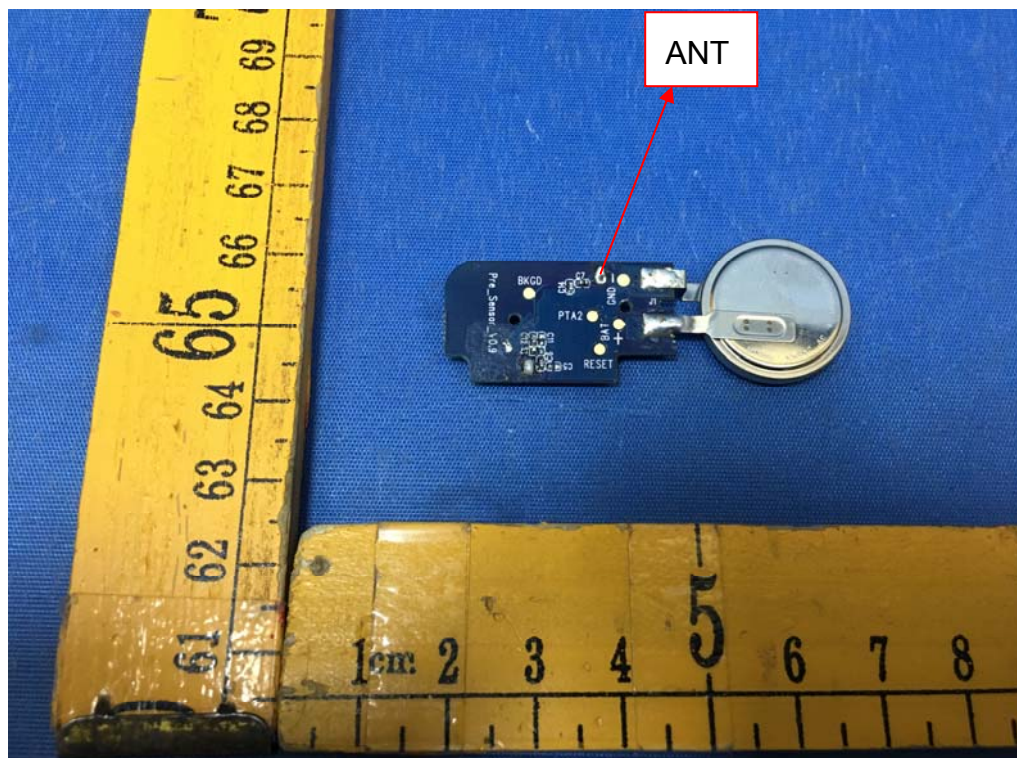
## 10 Antenna Requirement

An intentional radiator shall be designed to ensure that no antenna other than that furnished by the responsible party shall be used with the device. The use of a permanently attached antenna or of an antenna that uses a unique coupling to the intentional radiator shall be considered sufficient to comply with the provisions of this section. The manufacturer may design the unit so that a broken antenna can be replaced by the user, but the use of a standard antenna jack or electrical connector is prohibited. This requirement does not apply to carrier current devices or to devices operated under the provisions of §15.211, §15.213, §15.217, §15.219, or §15.221. Further, this requirement does not apply to intentional radiators that must be professionally installed, such as perimeter protection systems and some field disturbance sensors, or to other intentional radiators which, in accordance with §15.31(d), must be measured at the installation site. However, the installer shall be responsible for ensuring that the proper antenna is employed so that the limits in this part are not exceeded.

For intentional device, according to FCC 47 CFR Section 15.203, an intentional radiator shall be designed to ensure that no antenna other than that furnished by the responsible party shall be used with the device.

Result:

The EUT has one internal permanent antenna, the gain is -4.96dBi. meets the requirements of FCC 15.203.



## **11 RF Exposure**

Note: Please refer to RF Exposure test report: WTS17S1296893-2E.

## **12 Photographs –Test Setup Photos and EUT Photos**

Note: Please refer to Photos: WTS17S1296893E.

=====**End of Report**=====