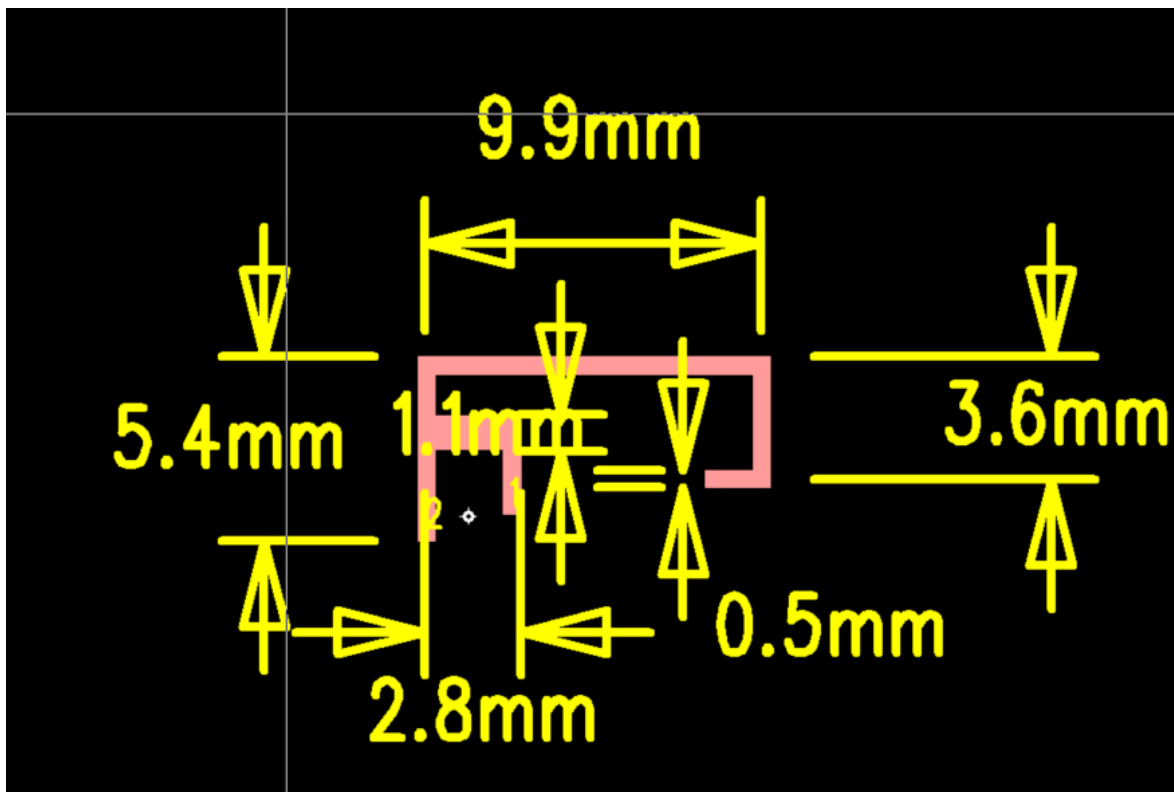
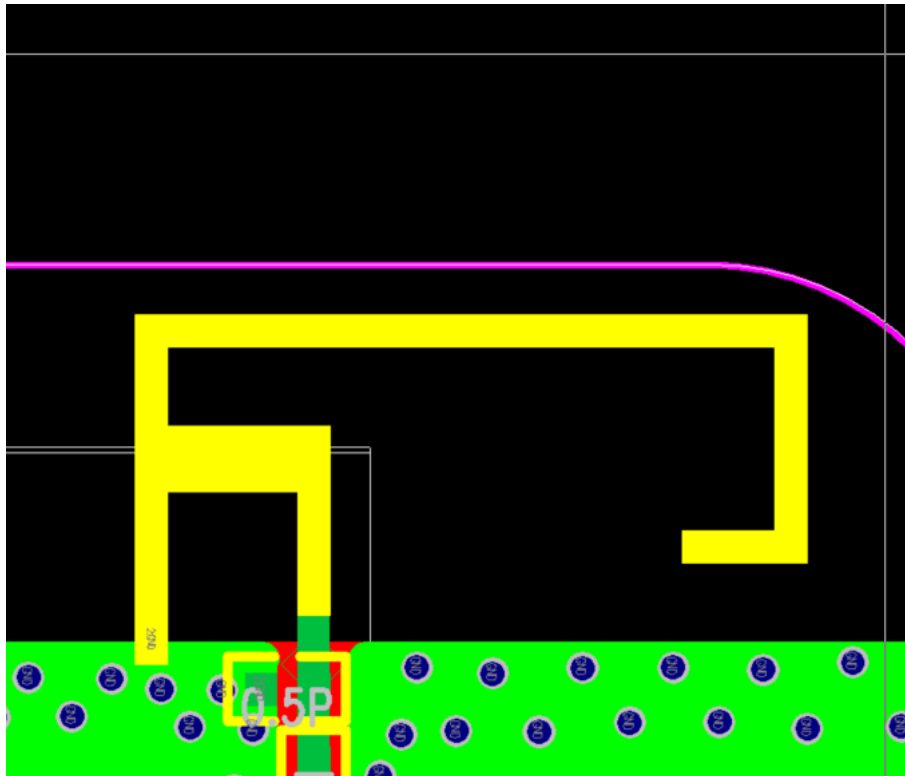

Antenna specification

Electrical Specification

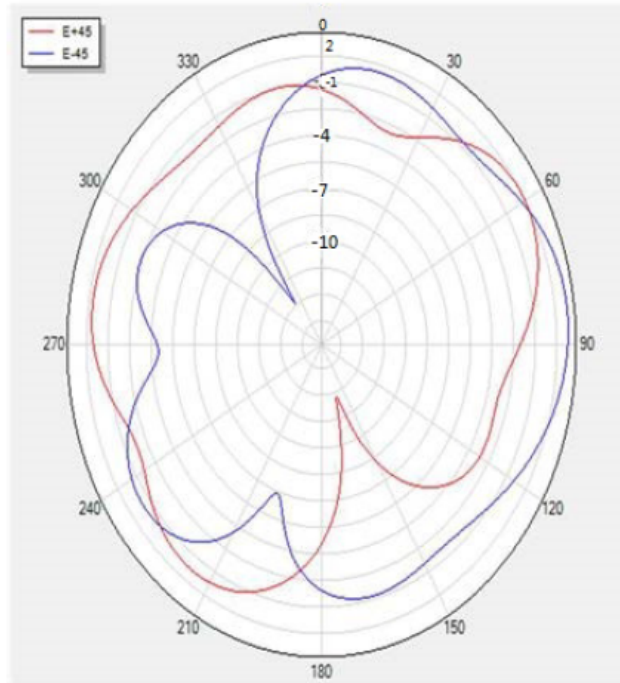
Model	Meander line
Frequency Range(MHz)	2402-2480
Bandwidth (MHz)	79
VSWR	≤ 2
Gain (dBi)	1.000
Input Impedance(Ω)	50
Polarization Type	Linear
Antenna Length(mm)	9.9mm
Pattern	Omni-directional
Antenna type	PCB antenna
MANUFACTURER	ShenZhen Belon Solutions Co.,Ltd
ADDRESS	Room 901-902, Block A, Building 2, Shenzhen International Innovation Valley, Xili Community, Xili Community, Nanshan District, Shenzhen

Dimension

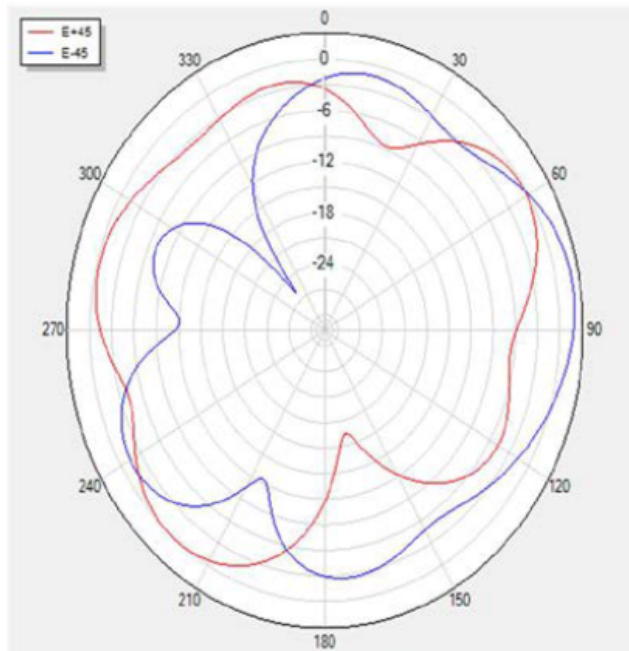


PolarGraphs (2400/2440/2480MHz)

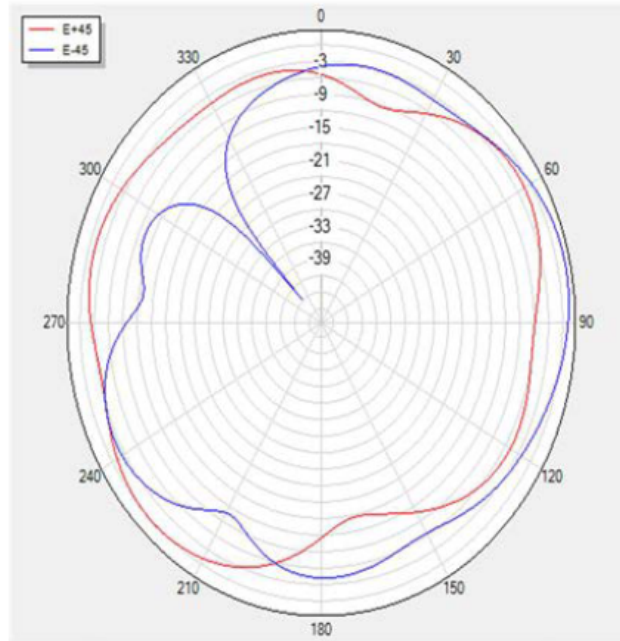
H Theta=90 freq=2400MHz



H Theta=90 freq=2440MHz



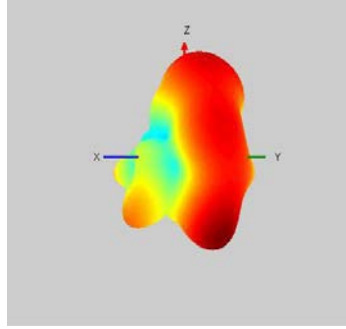
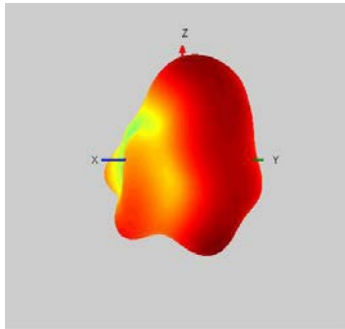
H Theta=90 freq=2480MHz



Frequency (MHz)	Gain(dB)		
	Max	Min	
2400	1.005	-13.127	
2440	0.976	-26.5310	
2500	0.987	-45.014	

Radiation Pattern 3D

2402MHZ 2441MHZ



2483MHZ

