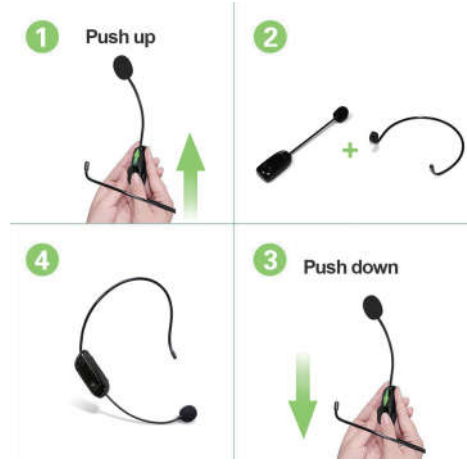


**Notes:**

- 1) When in using, long press "Ⓜ" on the wireless microphone to disconnect UHF mode with the speaker; Please pair manually follow the above steps to reconnect it.
- 2) In UHF amplification mode, short press "+/-" button to increase/ decrease volume.

**How to disassemble & install the wireless Mic:**



**How to charge the wireless Mic:**

The blue light blinks when the headset is low battery. Please turn it off and charge it with Micro-USB cable and connect to DC 5V charger. When charging, the red light will on all the time; it will go out when the battery is fully charged.

**Notes:**

- a. Unplug the charger as soon as it is charged;
- b. The headset will enter sleep mode if it is not used for 20 minutes. Short press "+" or "-" to wake it up.

**Caution & trouble shooting:**

- 1. No sound:**
    - 1) Please confirm the MIC and Receiver have battery.
    - 2) The connection between MIC and Receiver may be lost. Please pair them manually again.
  - 2. With screaming sound:**
    - 1) Please Keep the speaker face away from the microphone; keep the distance between audio device and MIC longer than 60cm to avoid screaming.
    - 2) Please turn down the volume to avoid screaming if using in a small room.
  - 3. Sound is very weak:**

Please short press "+" to increase the volume of microphone; and increase volume on your speaker.
  - 4. Please recharge the devices timely if low battery:**
    - 1) Receiver: The blue light blinks during using, that means the receiver is low battery.
    - 2) Wireless Mic: The blue light blinks when the headset is low battery.
- Notes:**
- A. Please turn the receiver/ wireless mic off and charging it with Dual Micro-USB charging cable, and connect to DC 5V charger.
  - B. The device must be fully recharged every 2 months when they aren't used.
- 5. Technical support:**
- Non-professional technician is not allowed to dismantle or repair the product. Original accessories are suggested if they need to be replaced. Please contact a local agent if there is any question or service requirement.
6. The receiver & wireless MIC should be kept in normal temperature, dry and ventilated environments. Rain, water, fire and other hot environments should be avoided.
  7. Please put the product and accessories far away from children.

**FCC Statement:**

This equipment has been tested and found to comply with the limits for a Class B digital device, pursuant to part 15 of the FCC rules. These limits are designed to provide reasonable protection against harmful interference in a residential installation. This equipment generates, uses and can radiate radio frequency energy and, if not installed and used in accordance with the instructions, may cause harmful interference to radio communications. However, there is no guarantee that interference will not occur in a particular installation. If this equipment does cause harmful interference to radio or television reception, which can be determined by turning the equipment off and on, the user is encouraged to try to correct the interference by one or more of the following measures:

- Reorient or relocate the receiving antenna.
- Increase the separation between the equipment and receiver.
- Connect the equipment into an outlet on a circuit different from that to which the receiver is connected.
- Consult the dealer or an experienced radio/TV technician for help.

To assure continued compliance, any changes or modifications not expressly approved by the party.

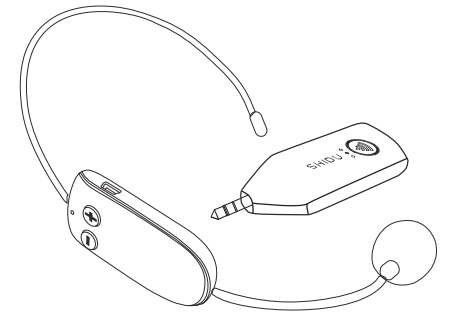
Responsible for compliance could void the user's authority to operate this equipment. (Example-use only shielded interface cables when connecting to computer or peripheral devices).

This equipment complies with Part 15 of the FCC Rules. Operation is subject to the following two conditions:

- (1) This device may not cause harmful interference, and
- (2) This device must accept any interference received, including interference that may cause undesired operation.

**RF warning statement:**

The device has been evaluated to meet general RF exposure requirement. The device can be used in portable exposure condition without restriction.



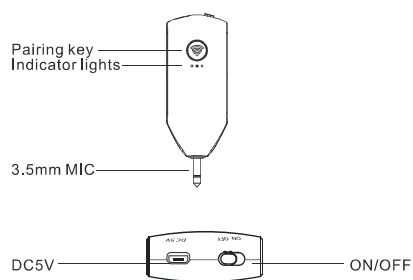
**Multi-function Acoustic Wireless Microphone**

U8 User Manual

**Features:**

1. Stylish, ergonomic and comfortable design;
2. UHF high frequency wireless technology with long transmission distance;
3. SHIDU Hi-Fi amplification electro-acoustic system;
4. Detachable head-mounted rack, support headset & hand-held usage;
5. Built-in polymer battery with high capacity;
6. Suits for any audio device with Mic input to realize wireless amplification.

**Function Illustration (Receiver):**



**Receiver:**

- 1. Switch on**  
Put the power button to "ON" side to turn on the device, and to "OFF" side to turn off it.
- 2. Indicator lights**
  - a. Blue indicator light: It is the indicator for pairing/ the receiver is low battery.
  - 1) Pairing: When it blinking, that means waiting to pair with the wireless headset microphone; when the blue light stop to blink and lasts on all the time, that means the they paired successfully with each other.
  - 2) Low battery: the blue light blinks frequently during using, that means the receiver is low battery. Please turn it off and charge it with Micro-USB cable and connect to DC 5V charger.

- b. Red indicator light: It is the indicator for charging. When charging, the light will last on all the time, and after fully charged, the red indicator light is off.
- c. Green indicator light: It is the indicator for power on. When turning on the receiver, the light will last on all the time. When power off the receiver, the green indicator light is off.

**3. MIC plug (connect to speaker's MIC port)**

Connect the receiver and audio device with "MIC in" function (3.5Φ) and switch on the receiver & wireless microphone, then wireless MIC works. Please use the 3.5Φ-6.5Φ connector in the standard package if the "MIC in" is 6.5Φ.

**!** You need addition audio device with mic input jack (amplifier or karaoke speaker) to output the sound.



**Not compatible with smartphones, tablet, computer or Apple products even with an adaptor.**



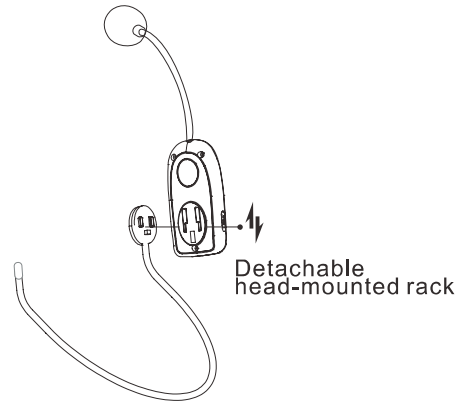
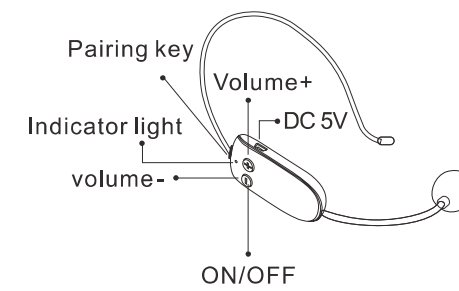
**4. Micro-USB Port (DC 5V)**

Please turn it off and charge it with micro-USB cable and connect to DC 5V charger. When charging, the red light will on all the time; it will go out when the battery is fully charged.

**Notes:**

- a. Charging time: 3-4 hours;
- b. We suggest that you fully charge before using it the first time;
- c. Unplug the charger as soon as it is full charged.

**Function Illustration (Wireless MIC):**



Detachable head-mounted rack

**Specifications:**

Microphone: Unidirectional condenser microphone  
 Frequency response: 30Hz-23000Hz  
 Output Impedance: ≤2.2KΩ  
 Sensitivity: -41dB ± 1dB (0dB=1V/Pa)  
 Charging voltage: DC 5V 500mA+  
 Working time: 3-5 hours  
 Charging time: 2-3 hours

**How to Pair the UHF Frequency Manually:**

1. Turn on the receiver and short press "Ⓜ" pairing key on the receiver, the blue indicator light blinks.
2. Turn on the wireless MIC and long press "Ⓜ" pairing key on the top of MIC for about 3s. The blue Indicator light will stop blinking after paired successfully.
3. Test whether the wireless MIC works successfully.