

Warning:

This device complies with Part 15 of the FCC Rules. Operation is subject to the following two conditions : (1) this device may not cause harmful interference, and (2) this device must accept any interference received, including interference that may cause undesired operation. Changes or modifications not expressly approved by the party responsible for compliance could void the user's authority to operate the equipment.

NOTE: This equipment has been tested and found to comply with the limits for a Class B digital device, pursuant to Part 15 of the FCC Rules. These limits are designed to provide reasonable protection against harmful interference in a residential installation. This equipment generates, uses and can radiate radio frequency energy and, if not installed and used in accordance with the instructions, may cause harmful interference to radio communications. However, there is no guarantee that interference will not occur in a particular installation. If this equipment does cause harmful interference to radio or television reception which can be determined by turning the equipment off and on, the user is encouraged to try to correct the interference by one or more of the following measures:

- Reorient or relocate the receiving antenna.
- Increase the separation between the equipment and receiver
- Connect the equipment into an outlet on a circuit different from that to which the receiver is connected.
- Consult the dealer or an experienced radio/TV technician for help

NOTE: This device and its antenna(s) must not be co-located or operation in conjunction with any other antenna or transmitter

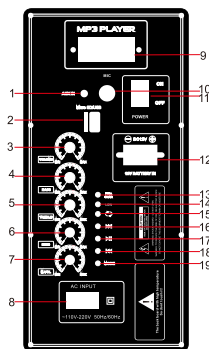
RF Exposure Statement

To maintain compliance with FCC's RF Exposure guidelines, This equipment should be installed and operated with minimum distance of 20cm the radiator your body. This device and its antenna(s) must not be co-located or operation in conjunction with any other antennar transmitter

PYLE
PyleUSA.com



MODEL : PWMA899A



DESCRIPCION DE LA UNIDAD

1. AUX IN
2. Micro SD/USB
3. VOLUME
4. BASS
5. TREBLE
6. ECHO
7. MIC. VOL
8. AC INPUT
9. Display
10. MIC. IN
11. POWER
12. DC12V IN
13. FULL CHAR
14. LOW
15. (arrow icon)
16. (right arrow icon)
17. (left arrow icon)
18. (left arrow icon)
19. (left arrow icon)

USE INSTRUCTION

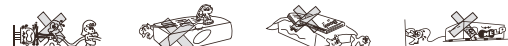
1. Connect the sign power cables according to the back panel connection instruction;
2. To sure the correct the Voltages, insert electribuc source cable, turn on the power switch button;
3. Adjust function keys to your satisfied best sound effect;

BT CONNECTION

Switch to MODE, switch to BT (BT MODE) and then the phone to connect.
The name of the connected BT is PYLE USA

IMPORTANT SAFETY MEASURES

Before using this machine, please read all the safety and operating instructions meanwhile, please observe all the indications about safe operating These and safety;



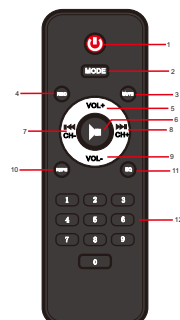
1. Protection of electric power supply line: Be aware that the electric power supply line and outlet on the machine DO NOT lengthen the electric shock. DO NOT pull or drag or the power supply line;
2. Ventilation: This set must be put in ventilated place DO NOT put disk on it or cloth to cover it the distance away from the wall should not be less than 10 centimeters DO NOT put this set on the bed;
3. Casing Dismantling: DO NOT dismantle the casing if one touches the inner components, he will probably get serious electric shock;
4. Unusual smell when you discover unusual smell and smoke, cut power supplies =immediately and pulls out the plus from the outlet on the wall Contact the sell shop or nearest repairing center;

PRODUCT FEATURES

1. High output power;
2. With Karaoke function;
3. The treble is clear, natural and bass is powerful;
4. Compatible to DVD/VCD/CD/TAPE/Audio/MP4/AUX;

REMOTE CONTROL

1. POWER : Stan-by button
2. MODE: Mode Switch for BT , FM , AUX , USB , SD
3. MUTE: mute button
4. REC: recording, press once to start recording, press again to play the current recording
5. VOL +: main volume
6. (left arrow icon): previous song/ next channel
7. (right arrow icon): play/stop Auto-search by long press the FM button, long press the BT button to turn on TWS
8. REPEAT: Single repeat / repeat all
9. EQ: choose from EQ1, EQ2, EQ3, EQ4,
10. Botões numéricos: digital button for choosing song /channel directly



PRODUCT EQUIPMENT LIST

1. Adapter
2. Remote control
3. User manual