

**Warning:**

This device complies with Part 15 of the FCC Rules. Operation is subject to the following two conditions: (1) this device may not cause harmful interference, and (2) this device must accept any interference received, including interference that may cause undesired operation. Changes or modifications not expressly approved by the party responsible for compliance could void the user's authority to operate the equipment.

**NOTE:** This equipment has been tested and found to comply with the limits for a Class B digital device, pursuant to Part 15 of the FCC Rules. These limits are designed to provide reasonable protection against harmful interference in a residential installation. This equipment generates, uses and can radiate radio frequency energy and, if not installed and used in accordance with the instructions, may cause harmful interference to radio communications. However, there is no guarantee that interference will not occur in a particular installation.

If this equipment does cause harmful interference to radio or television reception which can be determined by turning the equipment off and on, the user is encouraged to try to correct the interference by one or more of the following measures:

- Reorient or relocate the receiving antenna.
- Increase the separation between the equipment and receiver
- Connect the equipment into an outlet on a circuit different from that to which the receiver is connected.
- Consult the dealer or an experienced radio/TV technician for help

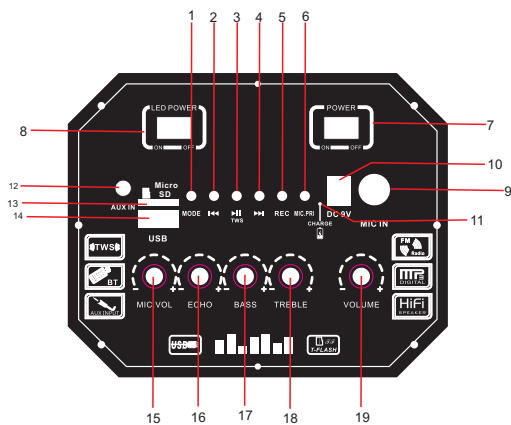
**NOTE:** This device and its antenna(s) must not be co-located or operation in conjunction with any other antenna or transmitter

**RF Exposure Statement**

To maintain compliance with FCC's RF Exposure guidelines. This equipment should be installed and operated with minimum distance of 20cm the radiator your body. This device and its antenna(s) must not be co-located or operation in conjunction with any other antenna or transmitter

**PYLE**  
PyleUSA.com

**MODEL:PPHP2845B**



**DESCRIPCION DE LA UNIDAD**

1. MODE: Change in BT/FM/Musical/Aux mode
2. ⏮: previous song/channel
3. ⏸/TWS: play/stop, Auto-search by long press the FM button, long press the BT button to turn on TWS
4. ⏭: next song/ next channel
- 5.REC: Press once to start recording, and second press to play the current recording
6. M.PRI: mic priority
7. power On/Off
8. LED On/Off
- 9.MIC. IN
- 10.SV. IN
- 11.CHARGE
- 12.AUX: Aux input
- 13.Micro SD
- 14.USB: USB port
- 15.MIC.VOL
- 16.ECHO : echo effect for mic
- 17.BASS : adjust the bass effect knob
- 18.TREBLE : adjust the treble effect knob
- 19.VOLUME :main volume knob

**USE INSTRUCTION**

- 1.Connect the sign power rables according to the back panel connection instruction;
- 2.To sure the correct the Voltages. insert electrific source cable, turn on the power switch button;
- 3.Adjust function keys to your satisfied best sound effect;

**BT CONNECTION**

Switch to MODE, switch to BT (BT MODE) and then the phone to connect. The name of the connected BT is PYLE USA

**IMPORTANT SAFETY MEASURES**

Before using this machine, please read all the safety and operating instructions meanwhile, please observe all the indications about safe operating These and safety;



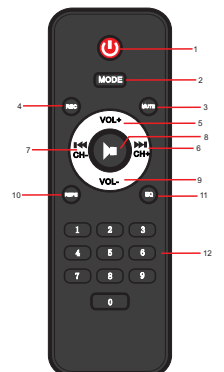
- 1.Protection of electric power supply line: Be aware that the electric power supply line and outlet on the machine DO NOT lengthen the electric shock. DO NOT pull or drag or the power supply line;
- 2.Ventilation: This set must be put in ventilated place DO NOT put disk on it or cloth to cover it the distance away from the wall should not be less than 10 centimeters DO NOT put this set on the bed;
- 3.Casing Dismantling: DO NOT dismantle the casing if one touches the inner components, he will probably get serious electric shock;
- 4.Unusual smell when you discover unusual smell and smoke, cut power supplies =immediately and pulls out the plug from the outlet on the wall Contact the sell shop or nearest repairing center;

**PRODUCT FEATURES**

- 1.High output power;
- 2.With Karaoke function;
- 3.The treble is clear, natural and bass is powerful;
- 4.Compatible to DVD/VCD/CD/TAPE/Audio/MP4/AUX;

**REMOTE CONTROL**

- 1.POWER : Stan-by button
2. MODE: Mode Switch for BT , FM , AUX , USB , SD
3. MUTE: mute button
4. REC: recording, press once to start recording, press again to play the current recording
5. VOL +: main volume
6. ⏭ : next song/channel
7. ⏮ : previous song/ next channel
8. ⏸ : play/stop Auto-search by long press the FM button, long press the BT button to turn on TWS
- 9.VOL -: main volume
- 10.REPEAT: Single repeat / repeat all
- 11.EQ:(choose from EQ1. EQ2. EQ3. EQ4. ....)
- 12.Botões numéricos: digital button for choosing song /channel directly



**PRODUCT EQUIPMENT LIST**

- 1.Adapter2.Remotecontrol3.Usermanual