

深圳市麒鑫通达科技有限公司

天线测试数据报告

客户：欧奇

项目：S122

频段：GSM:2/3/5/8 CDMA:BC0/BC1/BC10 WCDMA:1/2/4/5/6/8/19

LTE:1/2/3/4/5/7/8/12/13/17/18/19/20/25/26/28/34/38/39/40/41/66/71

NR:1/2/3/5/7/8/20/25/28/38/41/66/77/78/79

工程：傅工（137 6016 7811）

日期：2023-12-22

1. Test Project

	Test Project	Equipment
1. S Parameter	1. Return Loss (RL) 2. VSWR	Network Analyzer: Agilent 5071B
2. RF Test (2/3/4/5G)	1. power 2. level 3. TRP/TIS	Comprehensive Test: SP9500/CMW500/8960 Test Environment: Anechoic Chamber

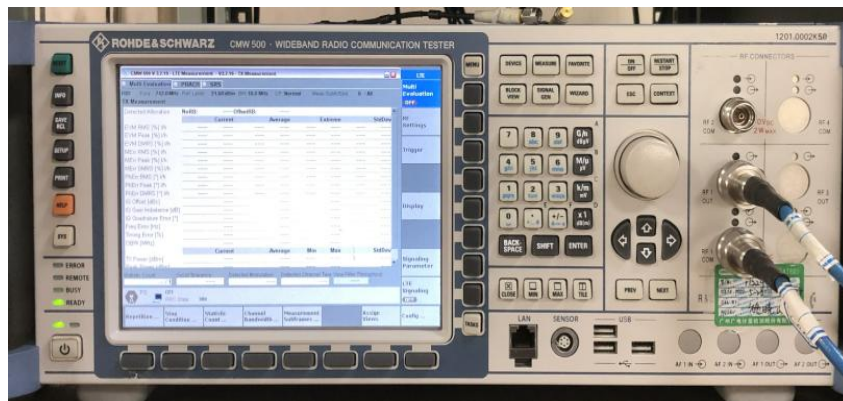
2. Test Equipment



Agilent 5071B (S Parameter (RL/VSWR) Test Equipment)



Agilent 8960 (2G/3G Test Equipment)

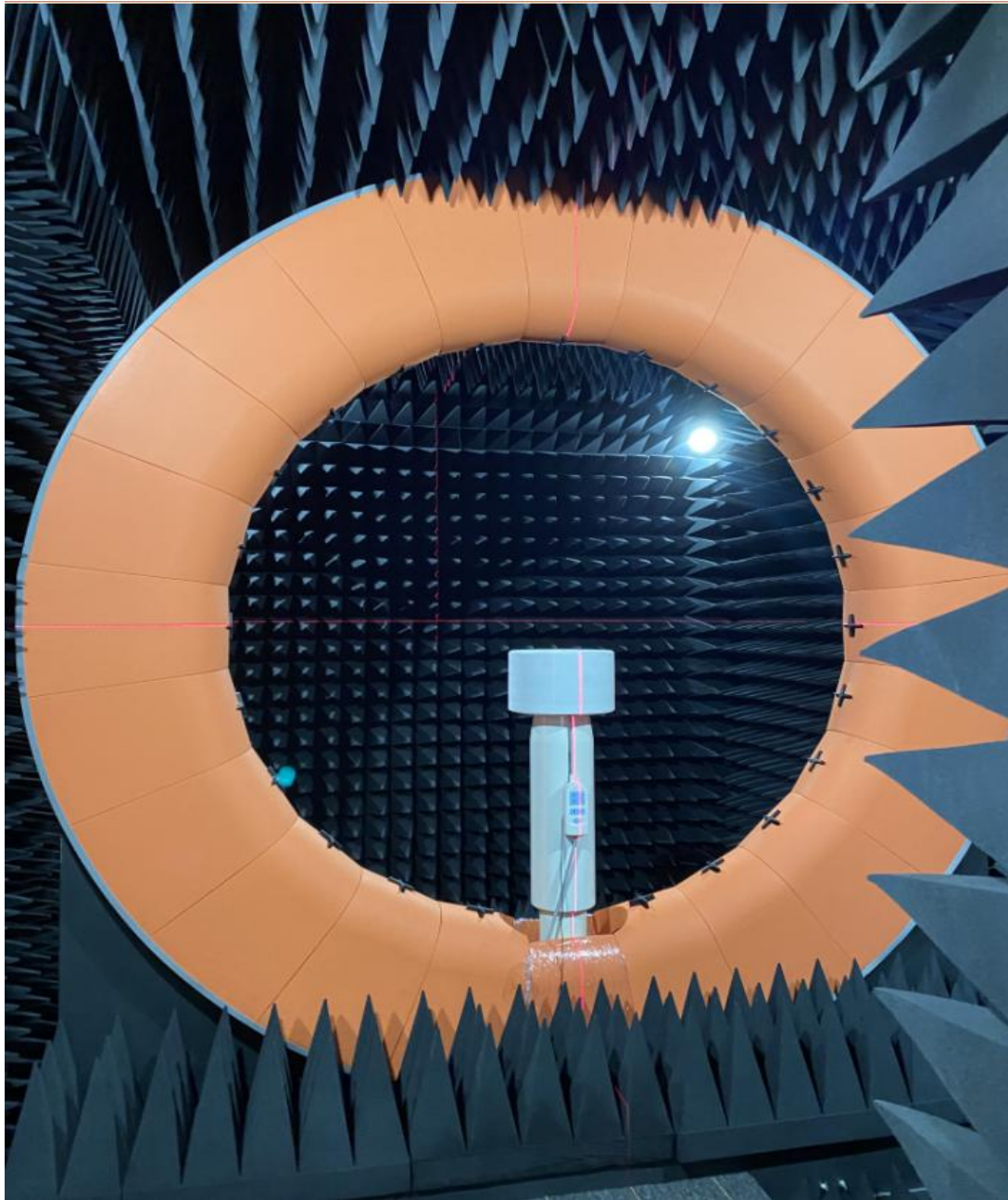


CMW 500 (2G/3G/4G Test Equipment)



SP9500 (5G Test Equipment)

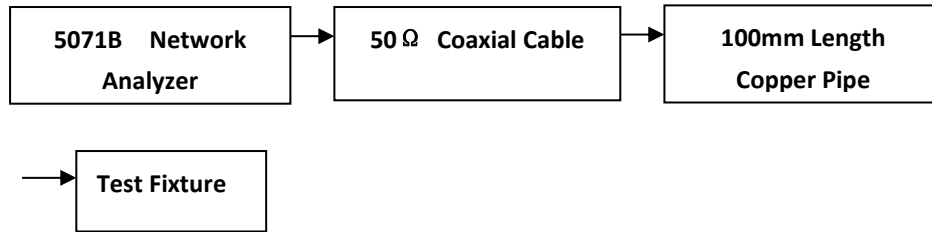
3. TestEnvironment



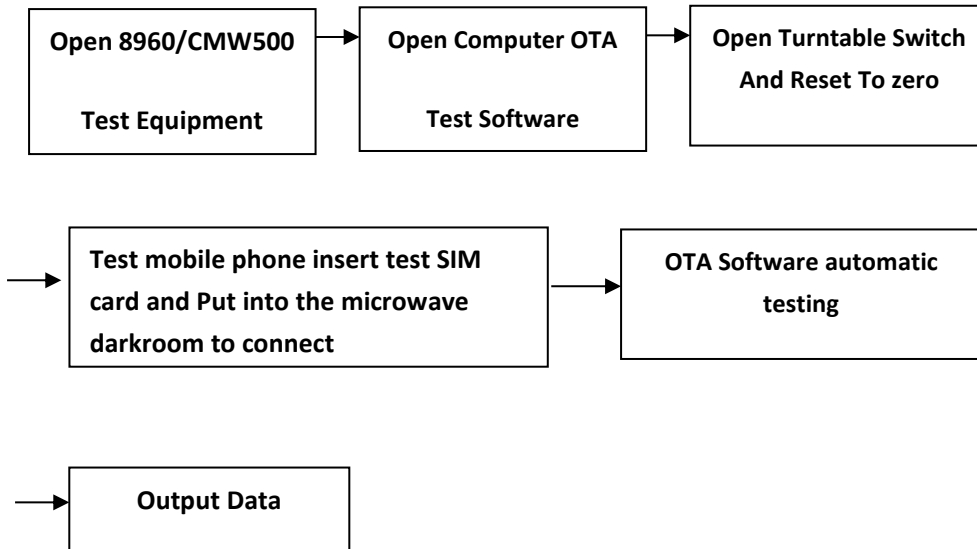
Microwave Anechoic Chamber

4. Test Steps

Passive VSWR/RL Test Steps:



Active TRP/TIS Test Steps:



5. Antenna Gain

Band	Max Gain	Efficiency	Band	Max Gain	Efficiency
GSM850	-1.12	29%	NR-B1	-0.38	32%
GSM900	-0.93	30%	NR-B2	-0.39	32%
DCS1800	-0.42	32%	NR-B3	-0.50	31%
PCS1900	-0.33	33%	NR-B5	-1.12	29%
WCDMA1	-0.32	33%	NR-B7	-0.29	33%
WCDMA2	-0.33	33%	NR-B8	-0.93	30%
WCDMA4	-0.42	32%	NR-B20	-1.12	29%
WCDMA5	-1.12	29%	NR-B25	-0.42	32%
WCDMA6	-1.12	29%	NR-B28	-1.65	23%
WCDMA8	-0.93	30%	NR-B38	0.16	35%
WCDMA19	-1.12	29%	NR-B41	0.16	35%
CDMA-BC0	-1.12	29%	NR-B66	-0.42	32%
CDMA-BC1	-0.32	33%	NR-B77	0.32	36%
CDMA-BC10	-1.12	29%	NR-B78	0.45	38%
LTE-B1	-0.32	33%	NR-B79	0.41	37%
LTE-B2	-0.33	33%			
LTE-B3	-0.42	32%			
LTE-B4	-0.42	32%	Bluetooth	-0.33	30.1%
LTE-B5	-1.12	29%	WIFI-2.4G	-0.33	30.1%
LTE-B7	0.18	35%	WIFI-5.24G	-0.98	28.0%
LTE-B8	-0.93	30%	WIFI-5.56G	-0.56	30.6%
LTE-B12	-1.65	23%	WIFI-5.76G	-0.39	29.6%
LTE-B13	-1.65	23%	GPS-L1	-0.13	31%
LTE-B17	-1.65	23%			
LTE-B18	-1.12	29%			
LTE-B19	-1.12	29%			
LTE-B20	-1.12	29%			
LTE-B25	-0.42	32%			
LTE-B26	-1.12	29%			
LTE-B28	-1.65	23%			
LTE-B66	-0.42	32%			
LTE-B71	-2.08	21%			
LTE-B34	-0.33	33%			
LTE-B38	0.23	36%			
LTE-B39	-0.33	33%			
LTE-B40	0.16	35%			
LTE-B41	0.23	36%			