

**ShenZhen QiXinTongDa Technology Co.,Ltd.**

# **Antenna Test Report**

**Client Name: OUQI**

**Project Name: S118-4G**

**Frequency Band: GSM B2/3/5/8+WCDMA B1/2/4 /  
5/8+FDD B1/2/3/4/5/7/8/12/17/18/19/20/25/26/28  
AB/66+TDD B38/40/41**

**RF: LI HAI LONG ( 137 6025 5827 )**

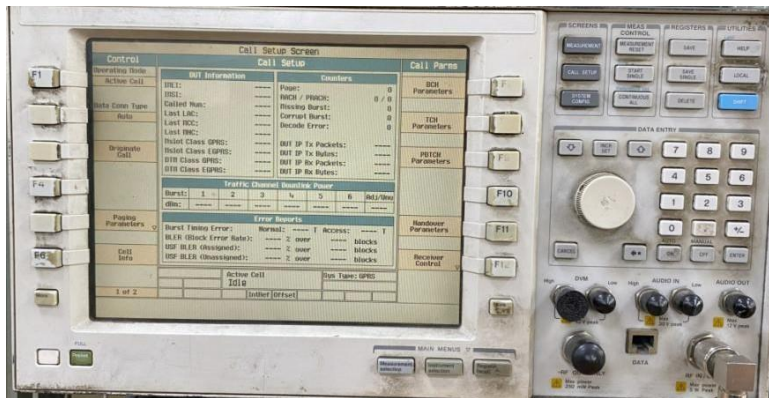
# 1. Test Project

	Test Project	Equipment
1. S Parameter	1. Return Loss (RL)  2. VSWR	Network Analyzer:  Agilent 5071B
2. RF Test  (2G+3G+4G+5G)	1. power  2. level  3. TRP/TIS	Comprehensive Test:  CMW500/8960  Test Environment:  Anechoic Chamber

## 2. Test Equipment



Agilent 5071B (S Parameter (RL/VSWR) Test Equipment)

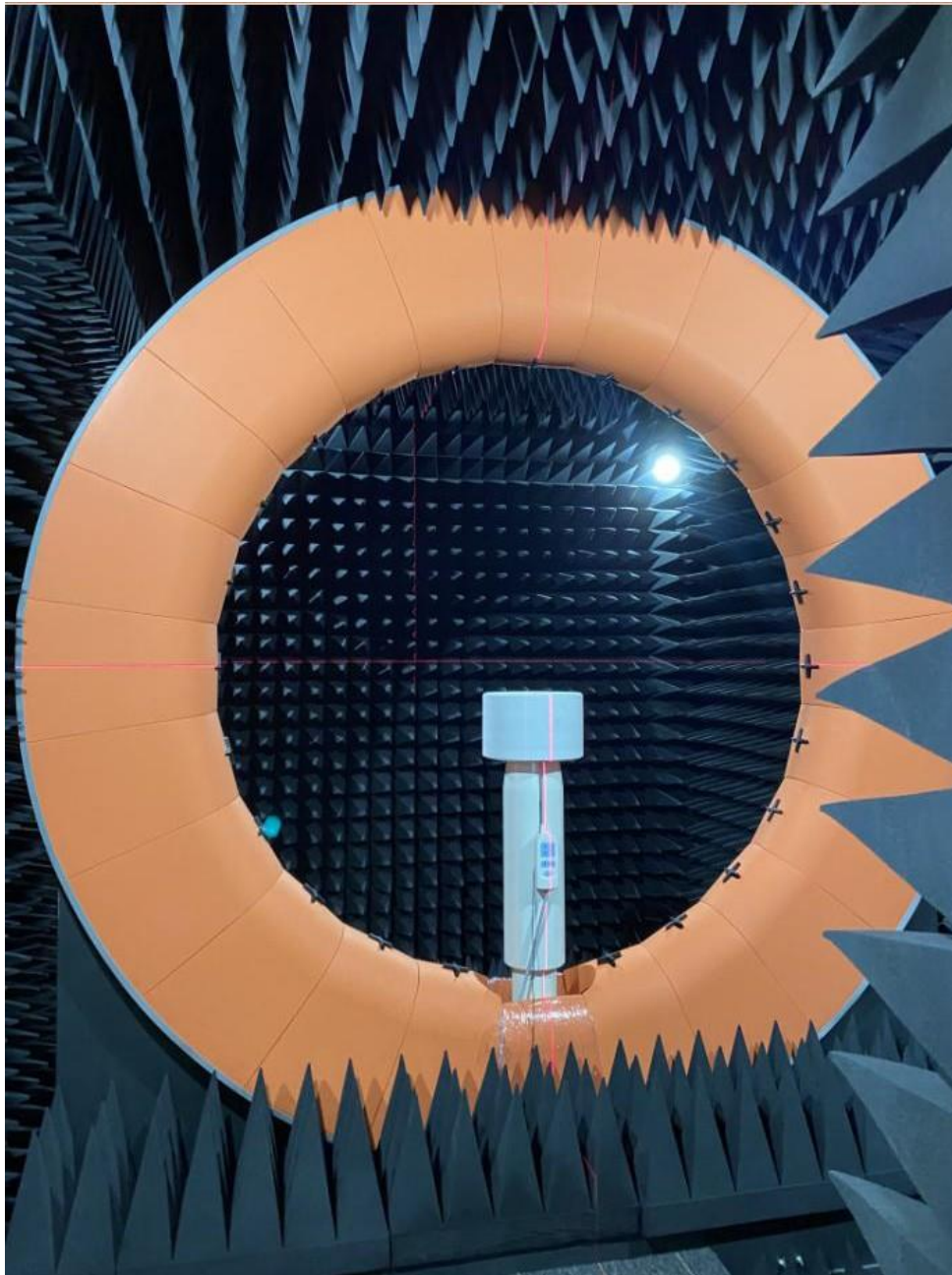


Agilent 8960 (2G/3G Test Equipment)



CMW 500 (2G/3G/4G Test Equipment)

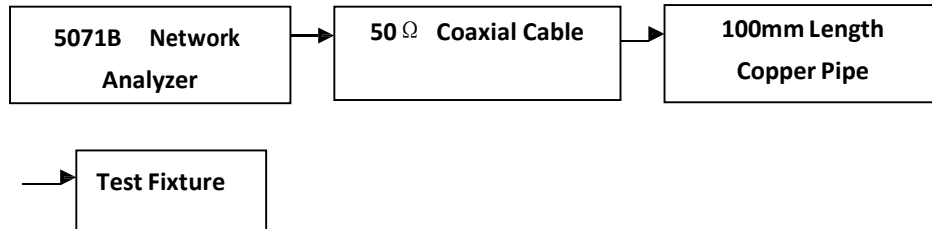
### 3. TestEnvironment



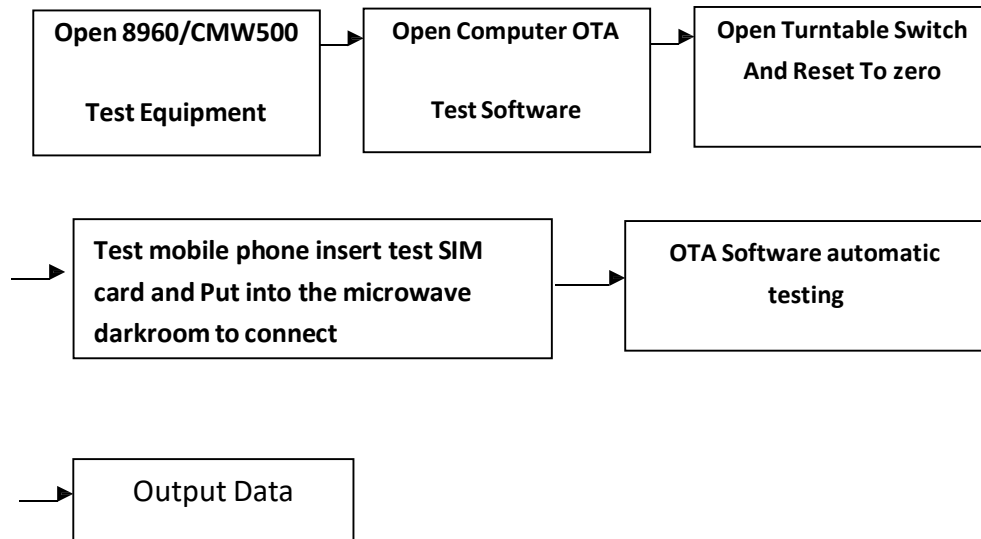
**Anechoic Chamber**

# 4. Test Steps

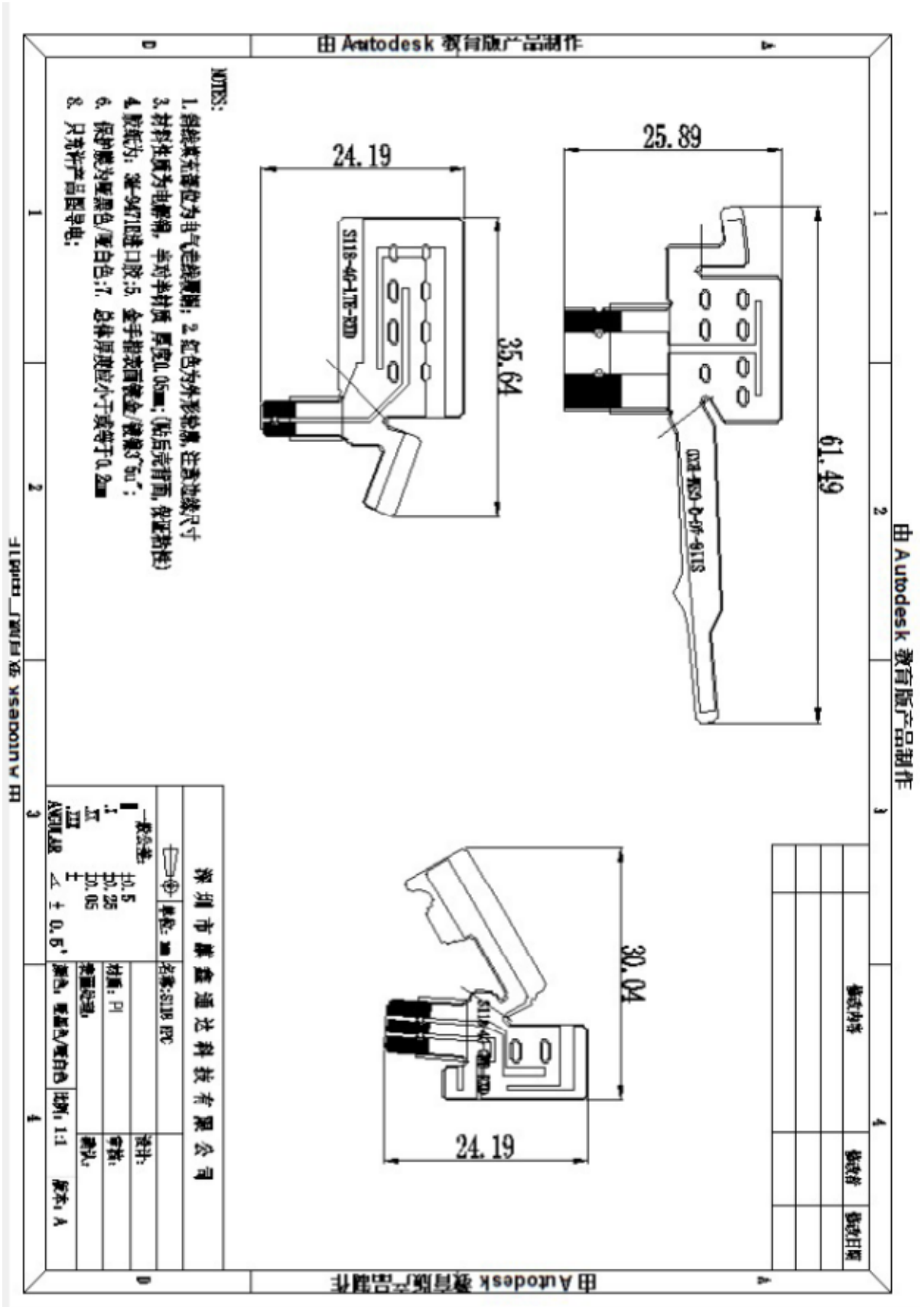
## Passive VSWR/RL Test Steps:



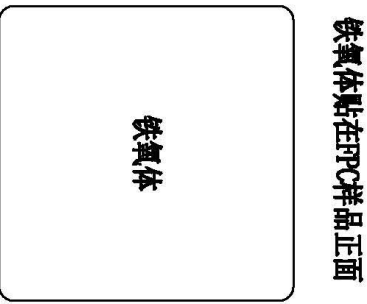
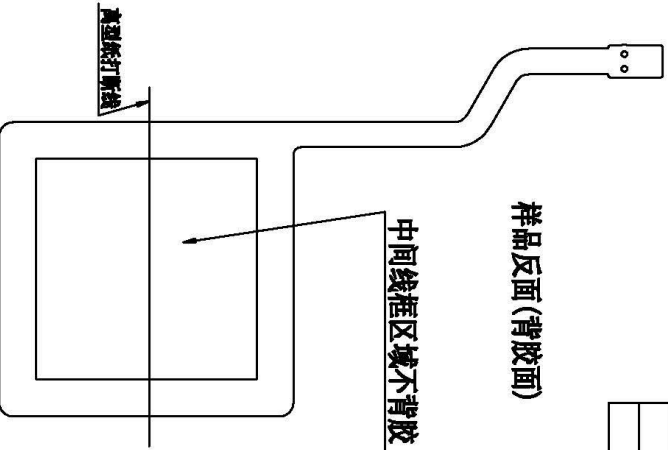
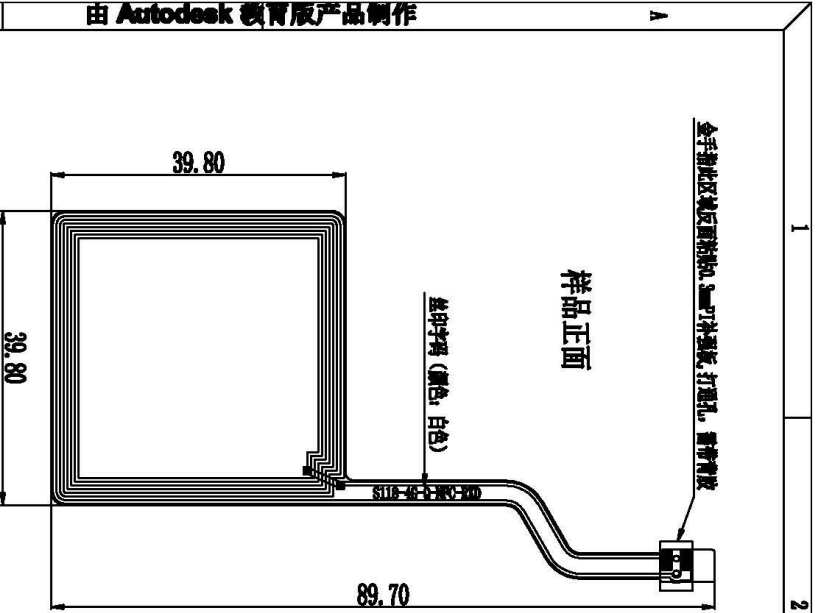
## Active TRP/TIS Test Steps:



# 5. Antenna Dimensions



修改内容	修改者	修改日期



- NOTES:
1. 铜线填充部位为电气走线覆铜; 2. 红色为外形轮廓, 注意边缘尺寸
  3. 材料性质为电解铜, 半对半材质 厚度0.05mm; (贴后充背面, 保证粘性)
  4. 胶纸为: 3M 9471B进口胶; 5. 金手指表面镀金/镀镍3~5μ; 6. 保护膜为哑黑色/哑白色; 7. 总体厚度应小于或等于0.2mm
  8. 只允许产品图导电;

深圳市麒鑫通达科技有限公司			
名称: SI18-NC	单位: mm	设计:	版本: A
材料: PI	审核:	比例: 1:1	版本: A
表面处理:	确认:		
颜色: 哑黑色/哑白色			
公差:			
I. ±0.5			
II. ±0.25			
III. ±0.05			
ANGULAR ± 0.5°			

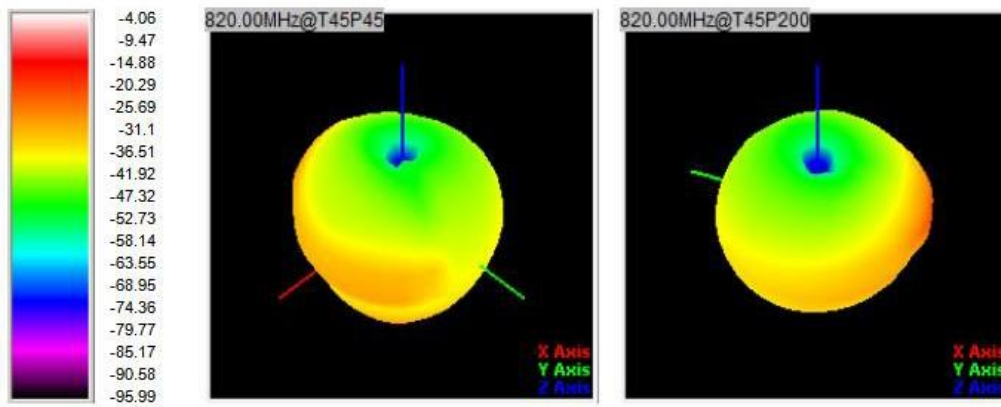
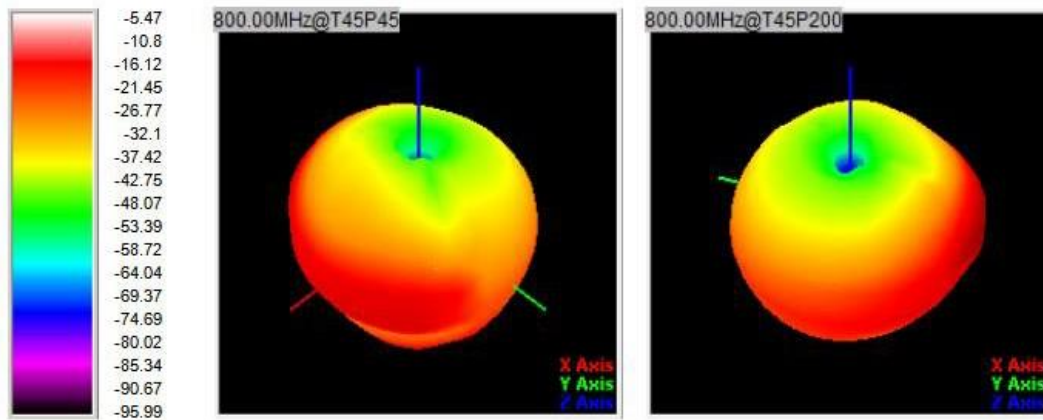
## 6. Antenna Gain

Frequency Band	Gain (dBi)
GSM850 (824-894MHz)	-2.30
GSM900 (880-960MHz)	-1.21
DCS1800 (1710-1880MHz)	0.20
PCS1900 (1850-1990MHz)	0.15
WCDMA850 (824-894MHz)	-2.30
WCDMA900 (880-960MHz)	-1.20
WCDMA1700 (1710-2155MHz)	0.21
WCDMA1900 (1850-1990MHz)	0.15
WCDMA2100 (1920-2170MHz)	0.18
FDD B 1 (1920-2170MHz)	0.18
FDD B 2 (1850-1990MHz)	0.15
FDD B 3 (1710-1880MHz)	0.21
FDD B 4 (1710-2155MHz)	0.22
FDD B 5 (824-894MHz)	-2.30
FDD B 7 (2500-2690MHz)	0.35
FDD B 8 (880-960MHz)	-1.20
FDD B 12 (699-746MHz)	-2.52
FDD B 17 (704-746MHz)	-2.50
FDD B 18 (815-875MHz)	-2.28
FDD B 19 (830-890MHz)	-2.30
FDD B 20 (791-862MHz)	-2.32
FDD B 25 (1850-1995MHz)	0.15
FDD B 26 (814-894MHz)	-2.30
FDD B 28 (703-803MHz)	-2.46
FDD B 66 (1700-2200MHz)	0.23

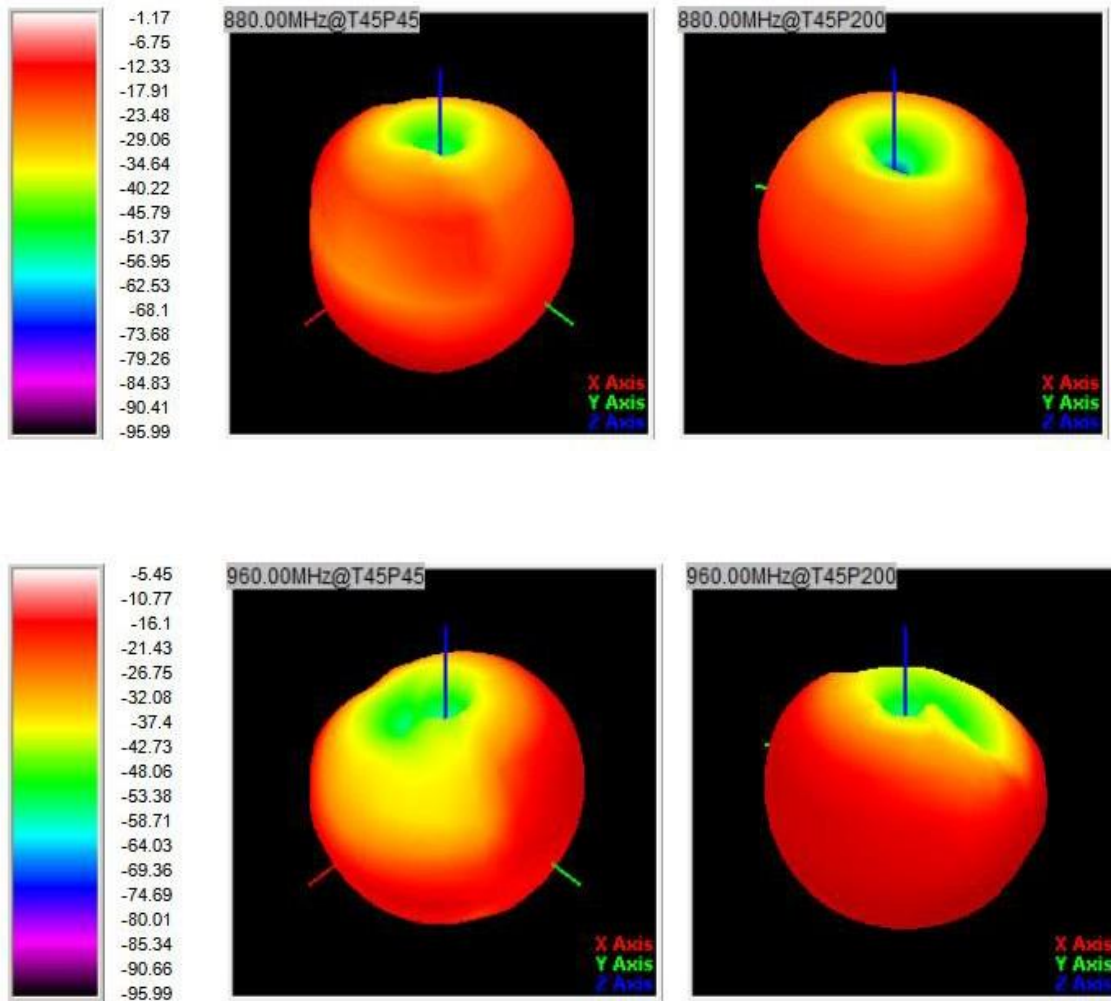


<b>TDD B 38 ( 2570-2620MHz )</b>	<b>0.35</b>
<b>TDD B 40 ( 2300-2400MHz )</b>	<b>0.36</b>
<b>TDD B 41 ( 2496-2690MHz )</b>	<b>0.33</b>
<b>WIFI2.4G</b>	<b>0.21</b>
<b>WIFI5.8G</b>	<b>-0.13</b>
<b>Bluetooth</b>	<b>0.21</b>
<b>GPS</b>	<b>0.10</b>

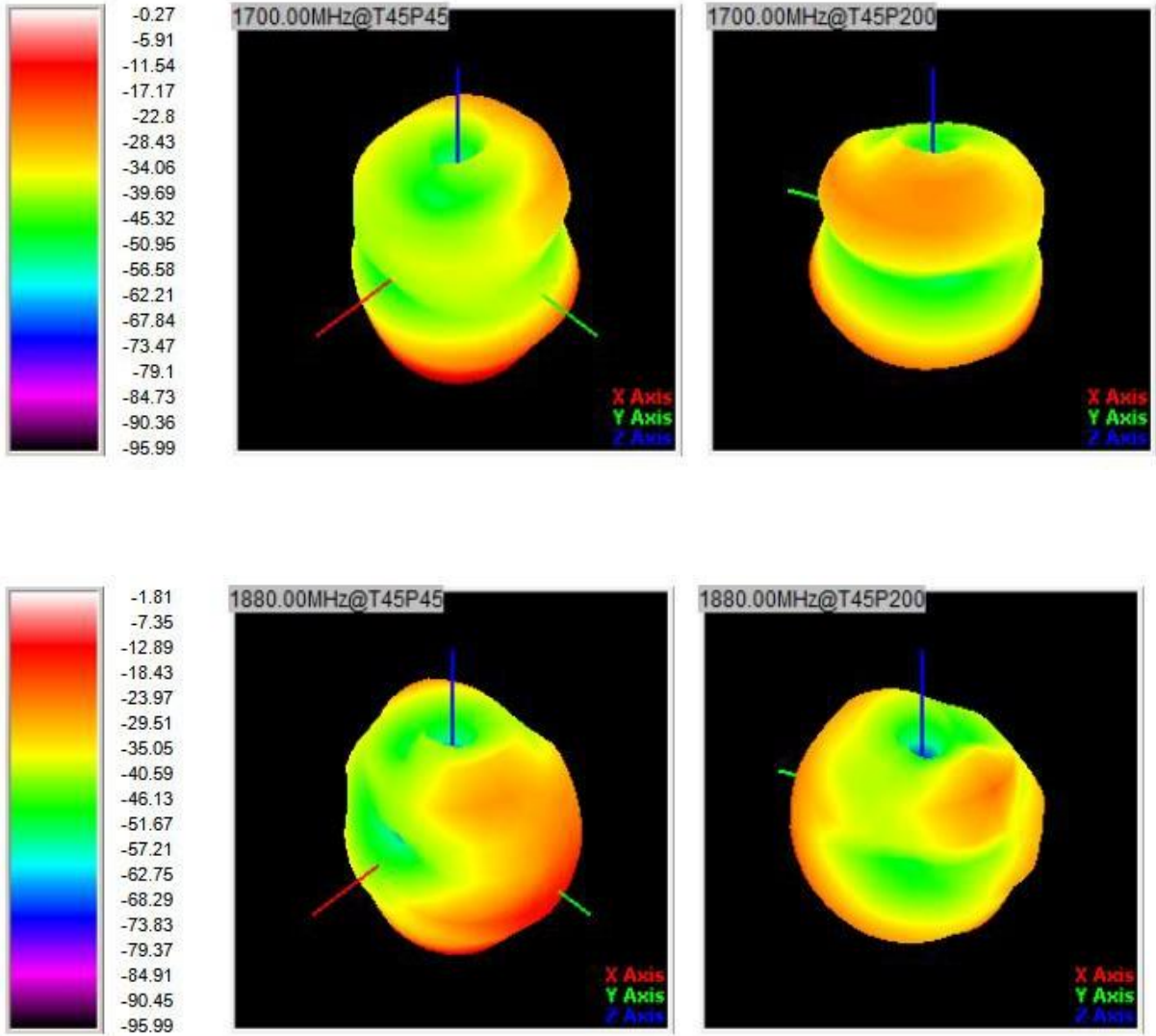
# 7. 3D Lobe Diagram (1)



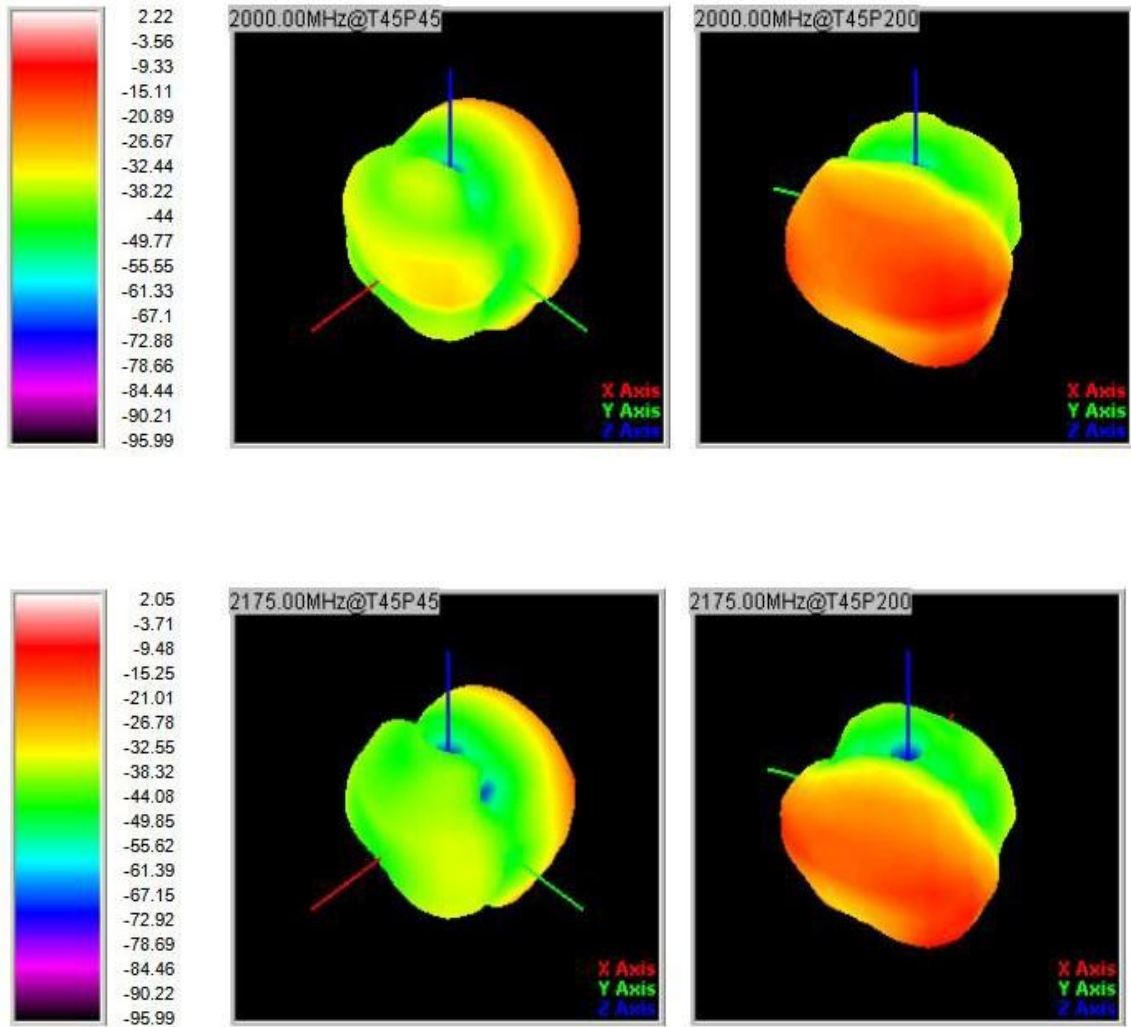
## 8. 3D Lobe Diagram (2)



# 9. 3D Lobe Diagram (3)



# 10. 3D Lobe Diagram (4)



# 11. 3D Lobe Diagram (5)

