

ShenZhen QiXinTongDa Technology Co.,Ltd.

Antenna Test Report

Client Name: OUQI

Project Name: S111B-4G

**Frequency Band: GSM B2/3/5/8+WCDMA B1/2/4 /
5/8+FDD B1/2/3/4/5/7/8/12/17/18/19/20/25/26/28
AB/66+TDD B38/40/41**

RF: LI HAI LONG (137 6025 5827)

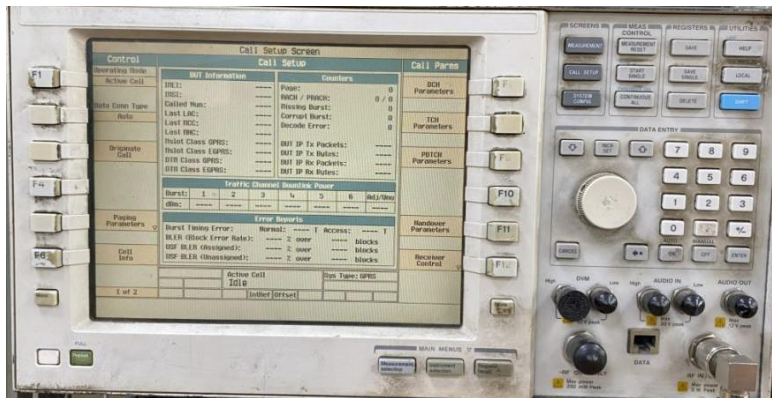
1. Test Project

	Test Project	Equipment
1. S Parameter	1. Return Loss (RL) 2. VSWR	Network Analyzer: Agilent 5071B
2. RF Test (2G+3G+4G+5G)	1. power 2. level 3. TRP/TIS	Comprehensive Test: CMW500/8960 Test Environment: Anechoic Chamber

2. Test Equipment



Agilent 5071B (S Parameter (RL/VSWR) Test Equipment)

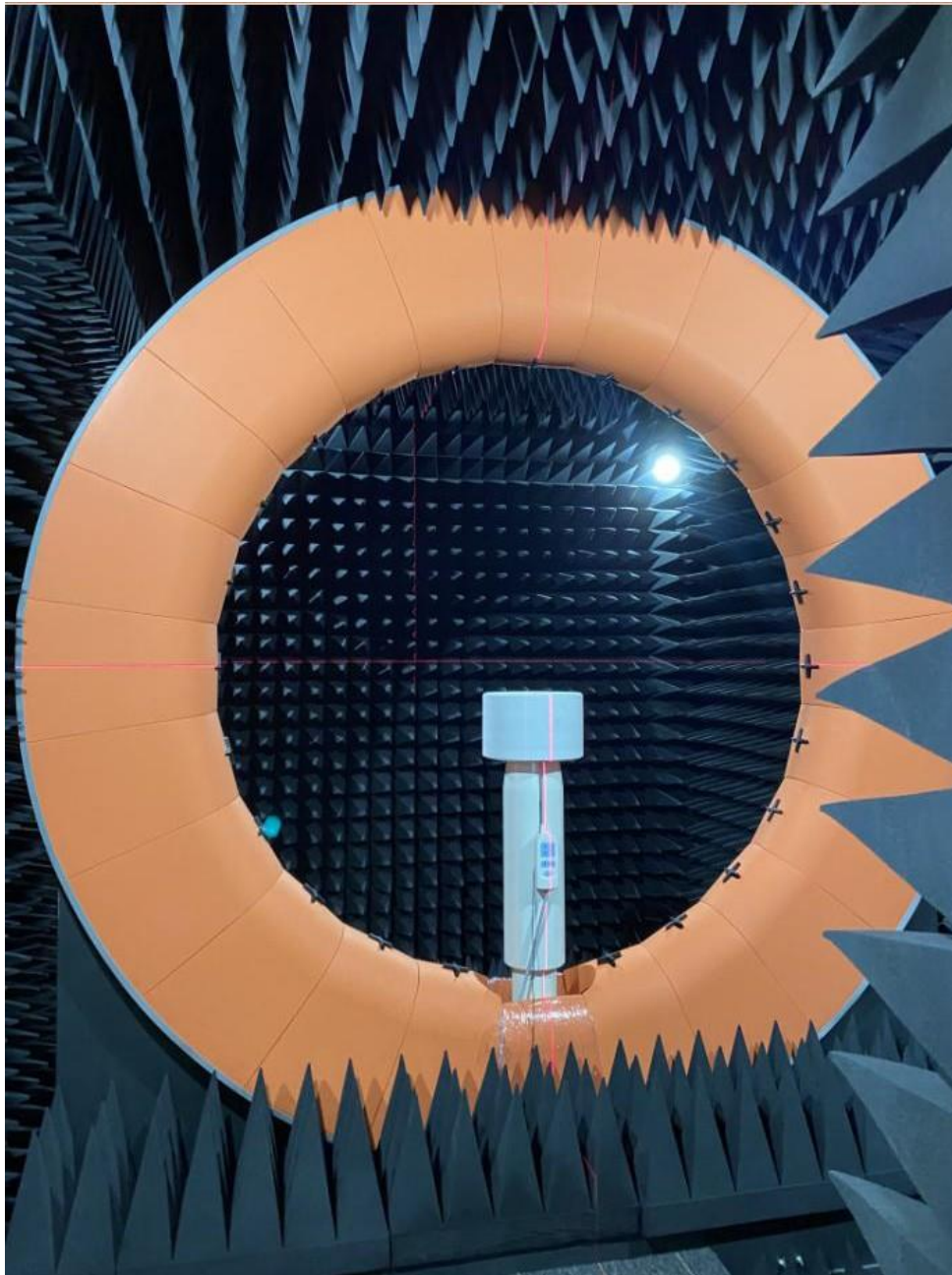


Agilent 8960 (2G/3G Test Equipment)



CMW 500 (2G/3G/4G Test Equipment)

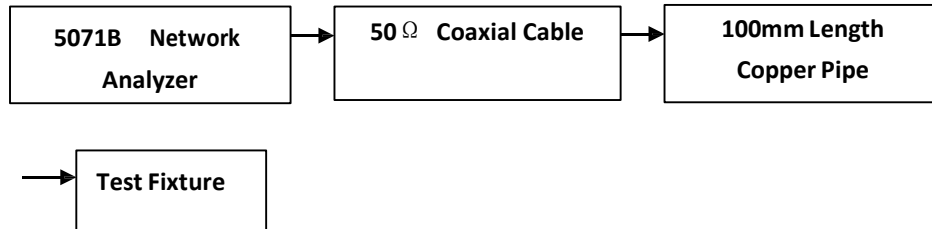
3. TestEnvironment



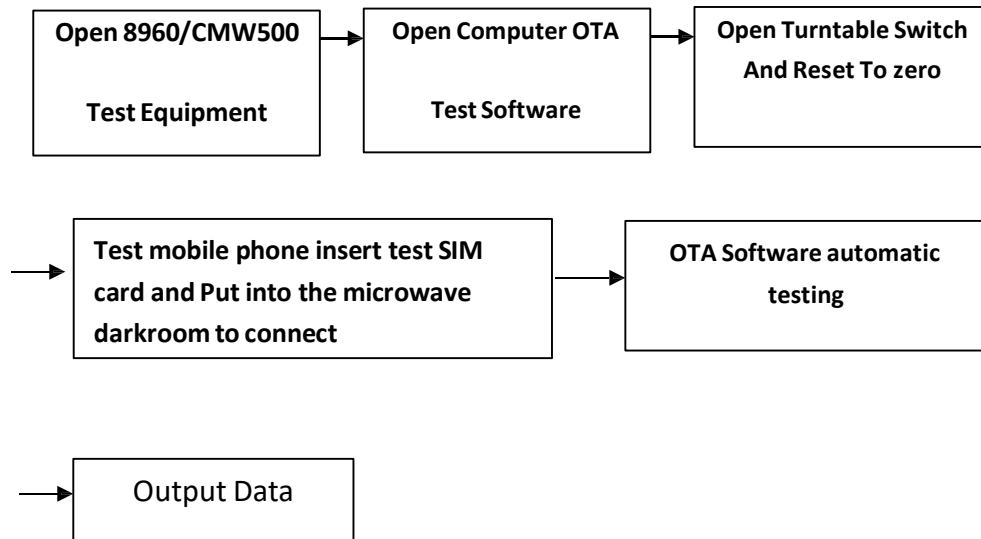
Anechoic Chamber

4. Test Steps

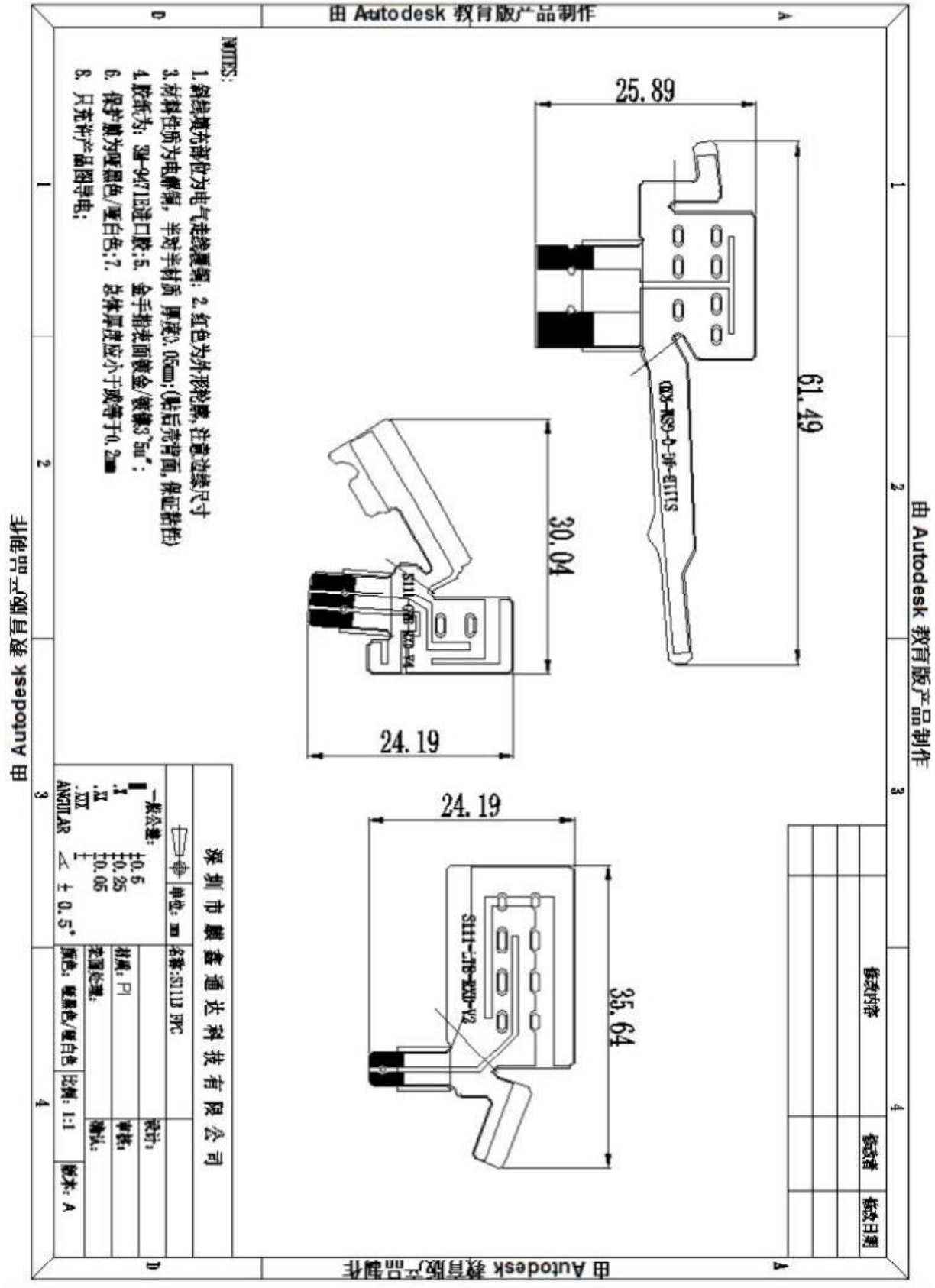
Passive VSWR/RL Test Steps:



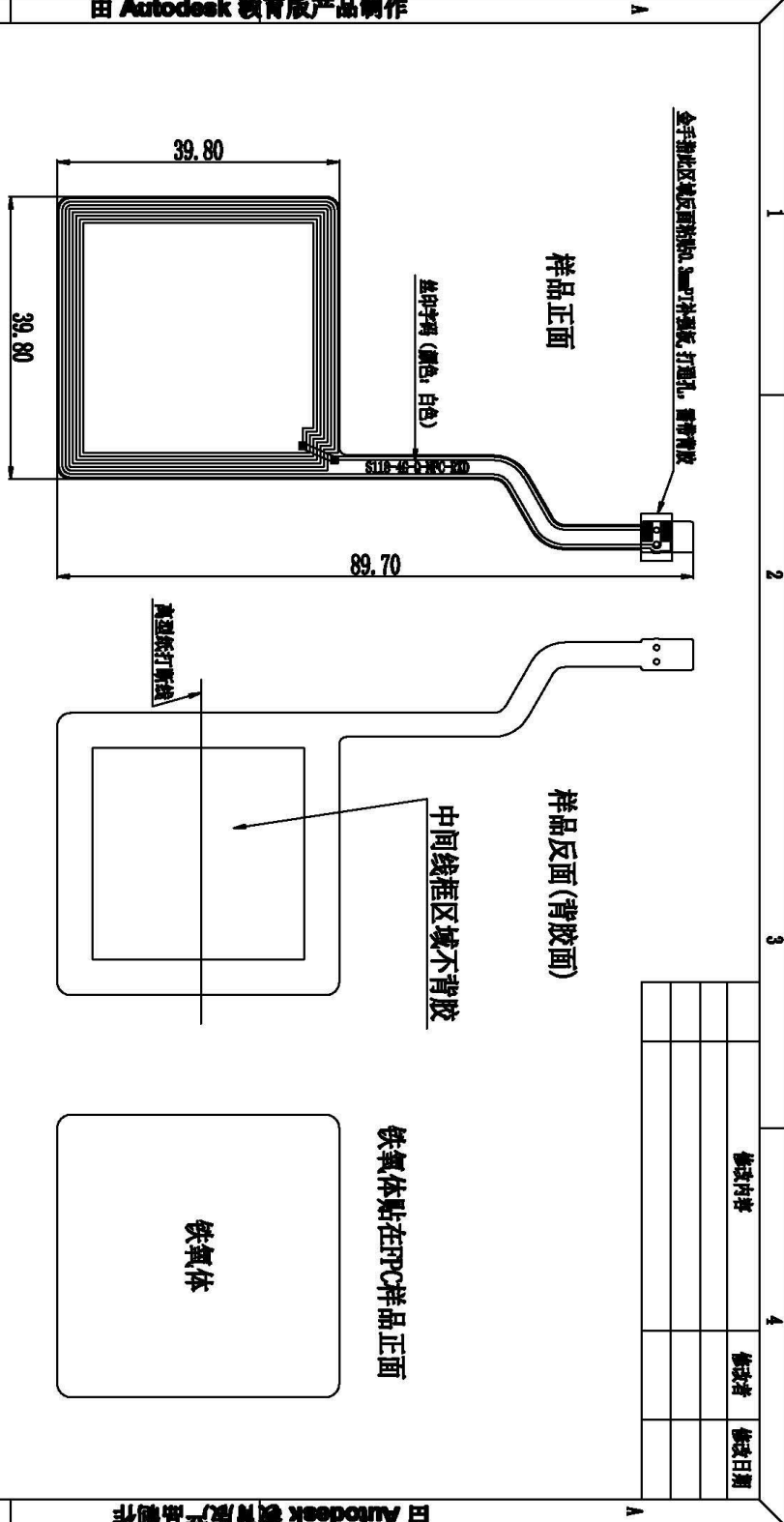
Active TRP/TIS Test Steps:



5. Antenna Dimensions



修改内容	修改者	修改日期



由 Autodesk 教育版产品制作

NOTES:

1. 铜线填充部位为电气走线覆铜; 2. 红色为外形轮廓, 注意边缘尺寸
3. 材料性质为电焊铜, 半对半材质 厚度0.05mm; (贴后充背面, 保证粘性)
4. 胶纸为: 3M-9471B进口胶; 5. 全手抛表面镀金/镀镍5"μ":
6. 保护层为哑黑色/哑白色; 7. 总体厚度应小于或等于0.2mm
8. 只允许产品图导电;

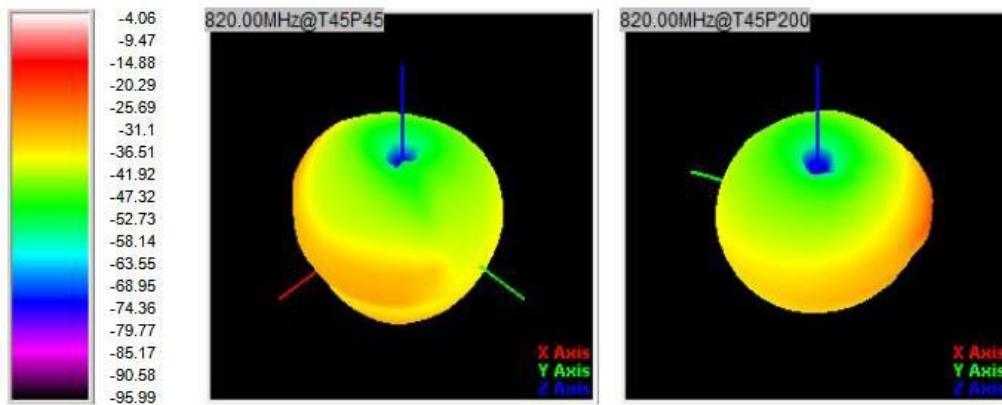
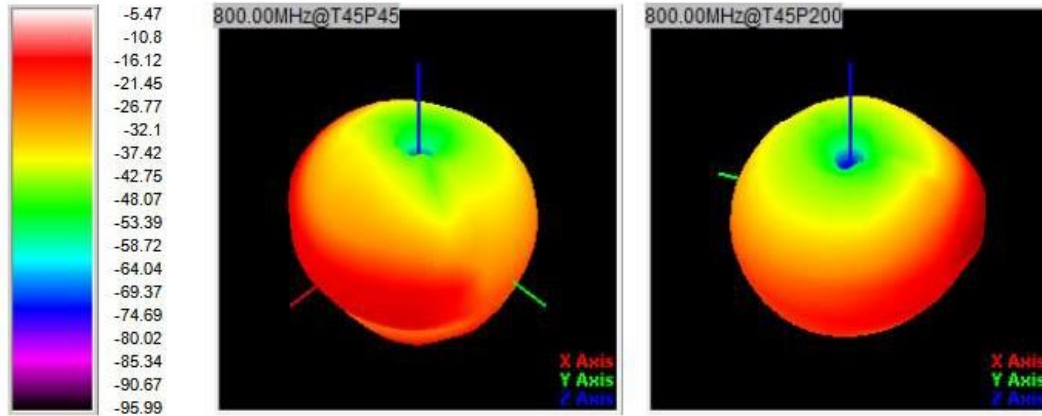
深圳市麒鑫通达科技有限公司		设计:	版本: A
名称: SI18-RC		审核:	
公差:	单位: mm	确认:	
I ±0.5	材料: PI		
II ±0.25	表面处理:		
III ±0.05	颜色: 哑黑色/哑白色	比例: 1:1	
ANGULAR			

6. Antenna Gain

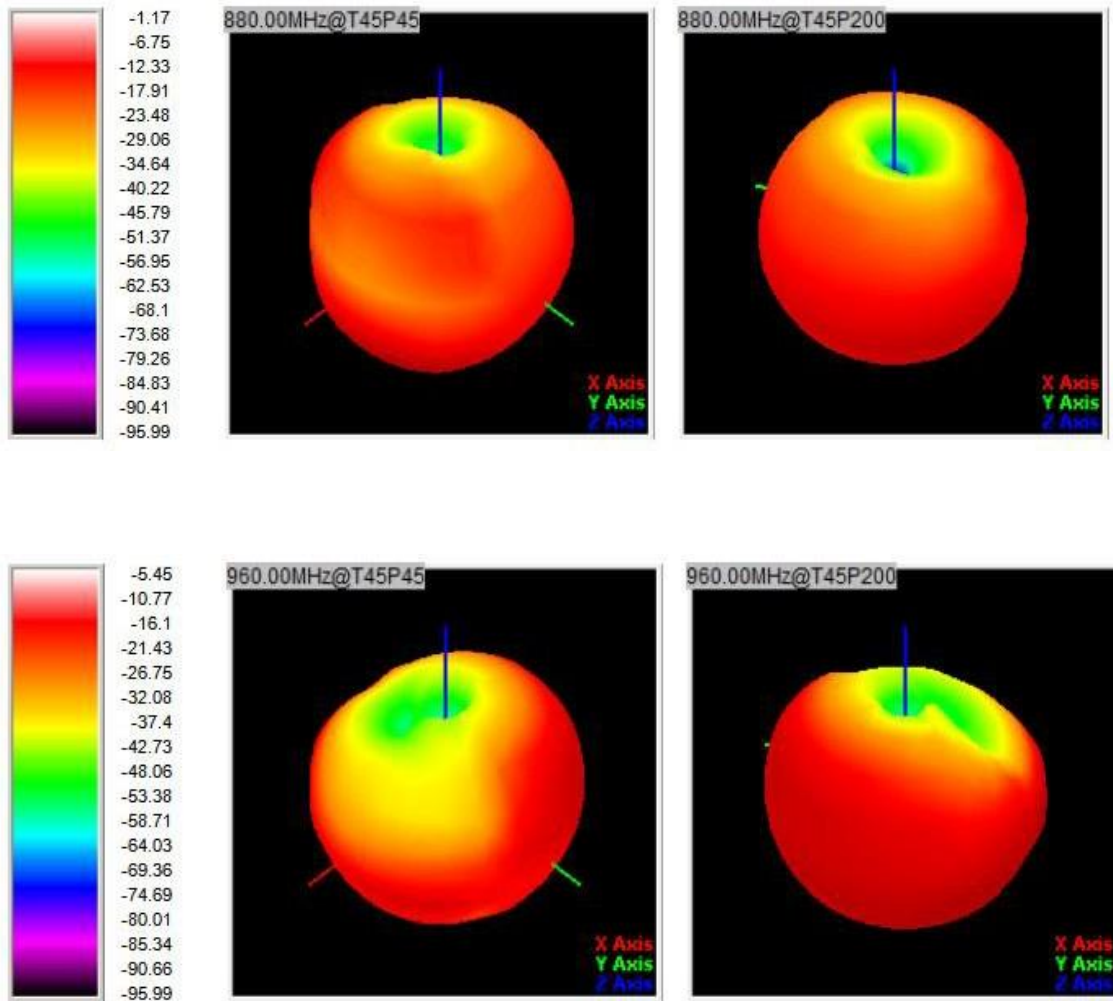
Frequency Band	Gain (dBi)
GSM850 (824-894MHz)	-2.30
GSM900 (880-960MHz)	-1.20
DCS1800 (1710-1880MHz)	0.20
PCS1900 (1850-1990MHz)	0.15
WCDMA850 (824-894MHz)	-2.30
WCDMA900 (880-960MHz)	-1.20
WCDMA1700 (1710-2155MHz)	0.21
WCDMA1900 (1850-1990MHz)	0.15
WCDMA2100 (1920-2170MHz)	0.18
FDD B 1 (1920-2170MHz)	0.18
FDD B 2 (1850-1990MHz)	0.15
FDD B 3 (1710-1880MHz)	0.21
FDD B 4 (1710-2155MHz)	0.22
FDD B 5 (824-894MHz)	-2.30
FDD B 7 (2500-2690MHz)	0.35
FDD B 8 (880-960MHz)	-1.20
FDD B 12 (699-746MHz)	-2.52
FDD B 17 (704-746MHz)	-2.50
FDD B 18 (815-875MHz)	-2.28
FDD B 19 (830-890MHz)	-2.30
FDD B 20 (791-862MHz)	-2.32
FDD B 25 (1850-1995MHz)	0.15
FDD B 26 (814-894MHz)	-2.30
FDD B 28 (703-803MHz)	-2.46
FDD B 66 (1700-2200MHz)	0.22

TDD B 38 (2570-2620MHz)	0.33
TDD B 40 (2300-2400MHz)	0.36
TDD B 41 (2496-2690MHz)	0.33
Bluetooth	0.21
WIFI-2.4G	0.21
WIFI-5G	-0.13
GPS	0.10

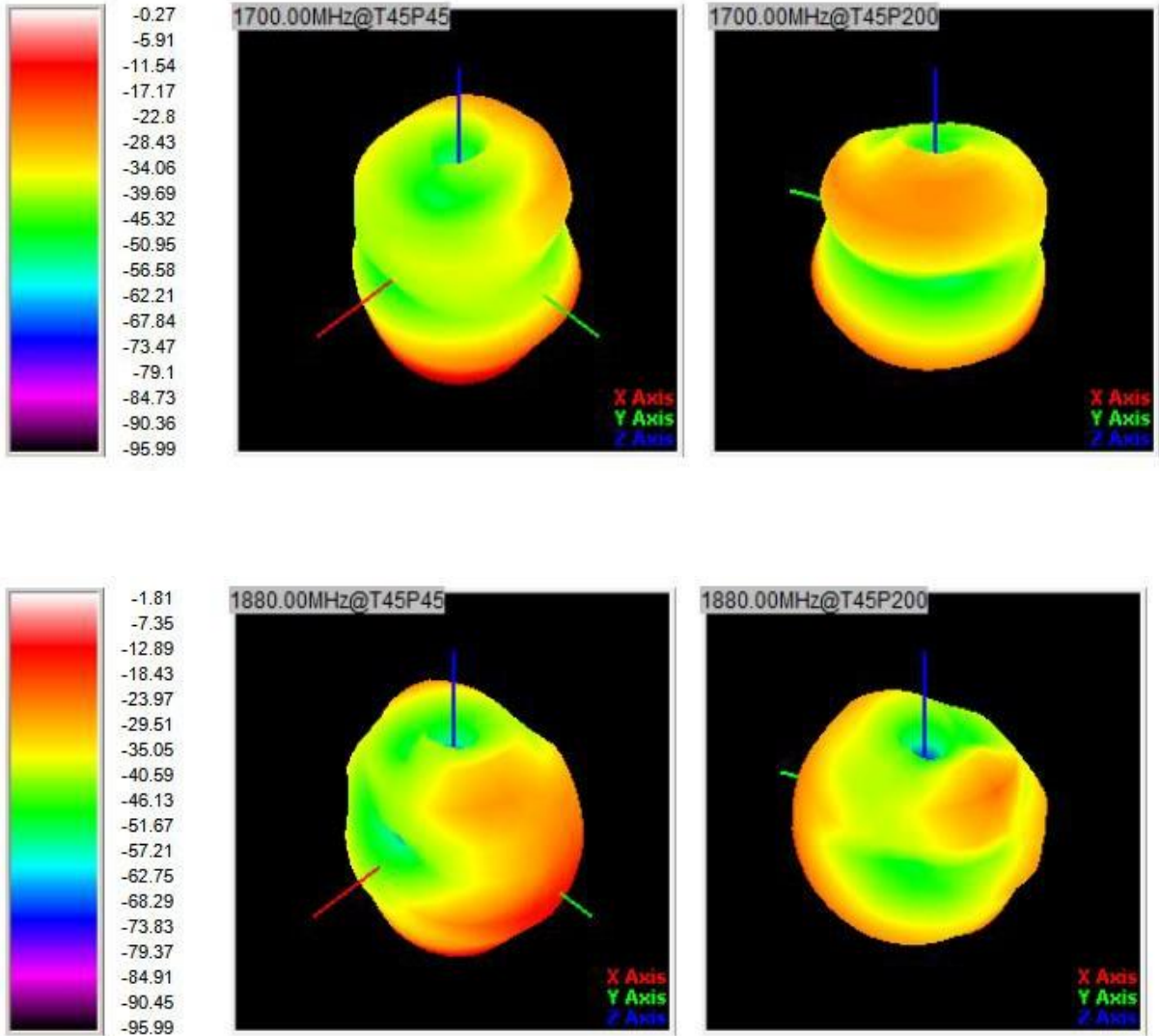
7. 3D Lobe Diagram (1)



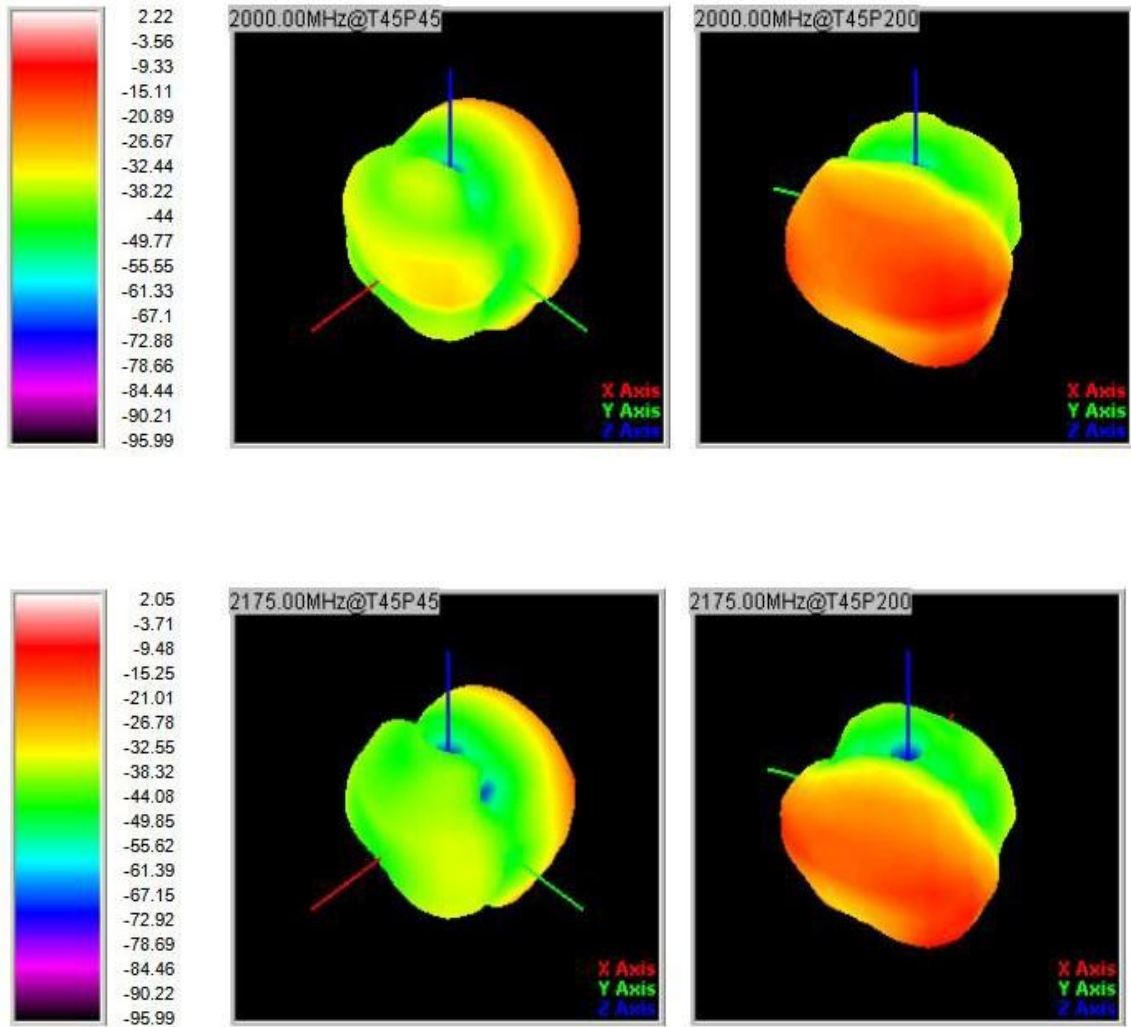
8. 3D Lobe Diagram (2)



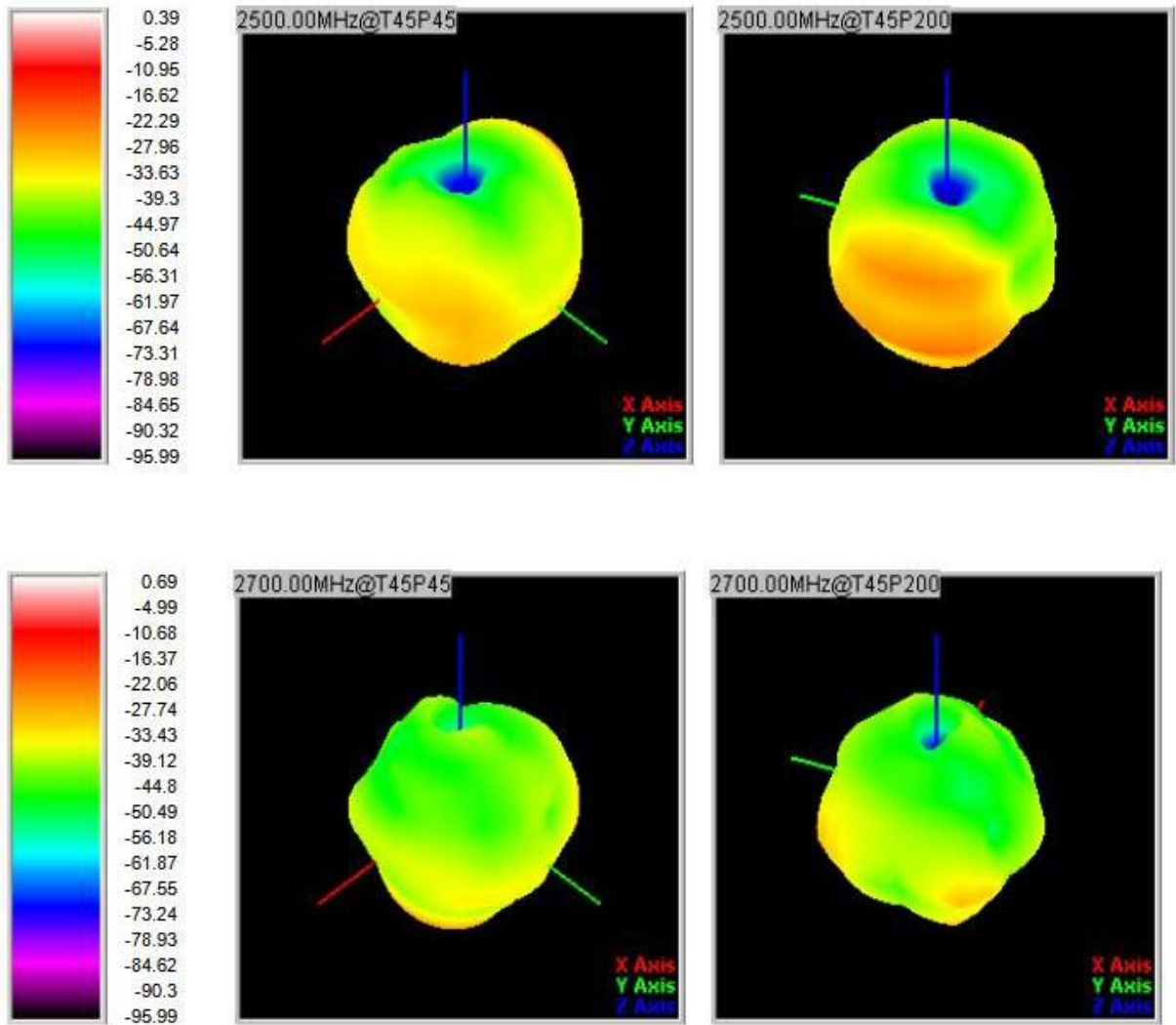
9. 3D Lobe Diagram (3)



10. 3D Lobe Diagram (4)

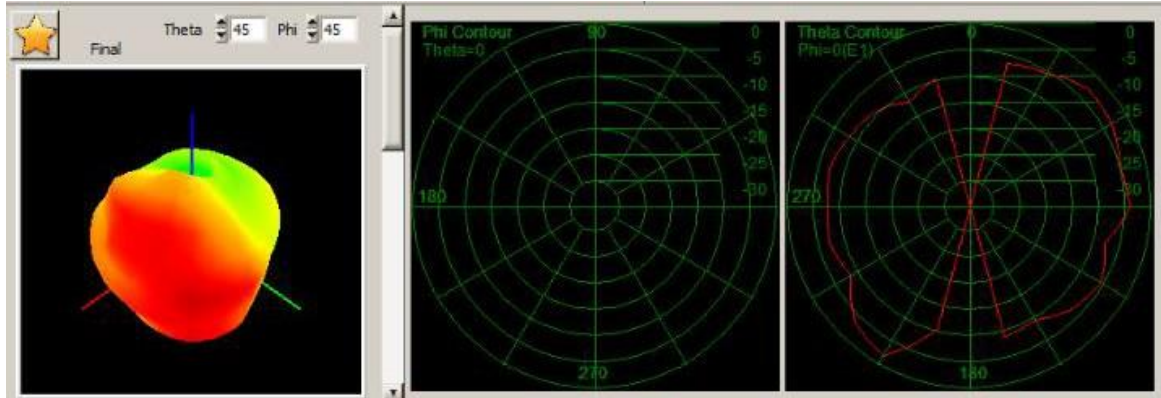


11. 3D Lobe Diagram (5)



12. 3D Lobe Diagram (6)

BT



WIFI-2.4G



WIFI-5G



13. 3D Lobe Diagram (7)

GPS

