

| | | | | | | | | | |
|--------|---|-------|----|------|-------|-------|------|-------|------|
| Band25 | 3 | 26055 | 8 | #Max | 16QAM | 21.71 | 2.44 | 24.15 | PASS |
| Band25 | 3 | 26055 | 15 | #0 | 16QAM | 21.45 | 2.44 | 23.89 | PASS |
| Band25 | 3 | 26365 | 1 | #0 | QPSK | 23.25 | 2.44 | 25.69 | PASS |
| Band25 | 3 | 26365 | 1 | #Mid | QPSK | 23.30 | 2.44 | 25.74 | PASS |
| Band25 | 3 | 26365 | 1 | #Max | QPSK | 23.41 | 2.44 | 25.85 | PASS |
| Band25 | 3 | 26365 | 8 | #0 | QPSK | 22.50 | 2.44 | 24.94 | PASS |
| Band25 | 3 | 26365 | 8 | #Mid | QPSK | 22.55 | 2.44 | 24.99 | PASS |
| Band25 | 3 | 26365 | 8 | #Max | QPSK | 22.55 | 2.44 | 24.99 | PASS |
| Band25 | 3 | 26365 | 15 | #0 | QPSK | 22.55 | 2.44 | 24.99 | PASS |
| Band25 | 3 | 26365 | 1 | #0 | 16QAM | 22.45 | 2.44 | 24.89 | PASS |
| Band25 | 3 | 26365 | 1 | #Mid | 16QAM | 22.48 | 2.44 | 24.92 | PASS |
| Band25 | 3 | 26365 | 1 | #Max | 16QAM | 22.57 | 2.44 | 25.01 | PASS |
| Band25 | 3 | 26365 | 8 | #0 | 16QAM | 21.54 | 2.44 | 23.98 | PASS |
| Band25 | 3 | 26365 | 8 | #Mid | 16QAM | 21.58 | 2.44 | 24.02 | PASS |
| Band25 | 3 | 26365 | 8 | #Max | 16QAM | 21.56 | 2.44 | 24.00 | PASS |
| Band25 | 3 | 26365 | 15 | #0 | 16QAM | 21.45 | 2.44 | 23.89 | PASS |
| Band25 | 3 | 26675 | 1 | #0 | QPSK | 23.90 | 2.44 | 26.34 | PASS |
| Band25 | 3 | 26675 | 1 | #Mid | QPSK | 24.04 | 2.44 | 26.48 | PASS |
| Band25 | 3 | 26675 | 1 | #Max | QPSK | 24.07 | 2.44 | 26.51 | PASS |
| Band25 | 3 | 26675 | 8 | #0 | QPSK | 22.98 | 2.44 | 25.42 | PASS |
| Band25 | 3 | 26675 | 8 | #Mid | QPSK | 23.08 | 2.44 | 25.52 | PASS |
| Band25 | 3 | 26675 | 8 | #Max | QPSK | 23.02 | 2.44 | 25.46 | PASS |
| Band25 | 3 | 26675 | 15 | #0 | QPSK | 23.02 | 2.44 | 25.46 | PASS |
| Band25 | 3 | 26675 | 1 | #0 | 16QAM | 23.37 | 2.44 | 25.81 | PASS |
| Band25 | 3 | 26675 | 1 | #Mid | 16QAM | 23.31 | 2.44 | 25.75 | PASS |
| Band25 | 3 | 26675 | 1 | #Max | 16QAM | 23.30 | 2.44 | 25.74 | PASS |
| Band25 | 3 | 26675 | 8 | #0 | 16QAM | 22.39 | 2.44 | 24.83 | PASS |
| Band25 | 3 | 26675 | 8 | #Mid | 16QAM | 22.39 | 2.44 | 24.83 | PASS |
| Band25 | 3 | 26675 | 8 | #Max | 16QAM | 22.07 | 2.44 | 24.51 | PASS |
| Band25 | 3 | 26675 | 15 | #0 | 16QAM | 22.51 | 2.44 | 24.95 | PASS |
| Band25 | 5 | 26065 | 1 | #0 | QPSK | 23.25 | 2.44 | 25.69 | PASS |
| Band25 | 5 | 26065 | 1 | #Mid | QPSK | 23.32 | 2.44 | 25.76 | PASS |
| Band25 | 5 | 26065 | 1 | #Max | QPSK | 23.44 | 2.44 | 25.88 | PASS |
| Band25 | 5 | 26065 | 12 | #0 | QPSK | 22.43 | 2.44 | 24.87 | PASS |
| Band25 | 5 | 26065 | 12 | #Mid | QPSK | 22.39 | 2.44 | 24.83 | PASS |
| Band25 | 5 | 26065 | 12 | #Max | QPSK | 22.40 | 2.44 | 24.84 | PASS |
| Band25 | 5 | 26065 | 25 | #0 | QPSK | 22.45 | 2.44 | 24.89 | PASS |
| Band25 | 5 | 26065 | 1 | #0 | 16QAM | 22.50 | 2.44 | 24.94 | PASS |
| Band25 | 5 | 26065 | 1 | #Mid | 16QAM | 22.55 | 2.44 | 24.99 | PASS |
| Band25 | 5 | 26065 | 1 | #Max | 16QAM | 22.54 | 2.44 | 24.98 | PASS |
| Band25 | 5 | 26065 | 12 | #0 | 16QAM | 21.22 | 2.44 | 23.66 | PASS |
| Band25 | 5 | 26065 | 12 | #Mid | 16QAM | 21.66 | 2.44 | 24.10 | PASS |
| Band25 | 5 | 26065 | 12 | #Max | 16QAM | 21.68 | 2.44 | 24.12 | PASS |
| Band25 | 5 | 26065 | 25 | #0 | 16QAM | 21.81 | 2.44 | 24.25 | PASS |
| Band25 | 5 | 26365 | 1 | #0 | QPSK | 23.48 | 2.44 | 25.92 | PASS |
| Band25 | 5 | 26365 | 1 | #Mid | QPSK | 23.51 | 2.44 | 25.95 | PASS |
| Band25 | 5 | 26365 | 1 | #Max | QPSK | 23.51 | 2.44 | 25.95 | PASS |
| Band25 | 5 | 26365 | 12 | #0 | QPSK | 22.43 | 2.44 | 24.87 | PASS |
| Band25 | 5 | 26365 | 12 | #Mid | QPSK | 22.60 | 2.44 | 25.04 | PASS |
| Band25 | 5 | 26365 | 12 | #Max | QPSK | 22.52 | 2.44 | 24.96 | PASS |
| Band25 | 5 | 26365 | 25 | #0 | QPSK | 22.51 | 2.44 | 24.95 | PASS |
| Band25 | 5 | 26365 | 1 | #0 | 16QAM | 22.13 | 2.44 | 24.57 | PASS |
| Band25 | 5 | 26365 | 1 | #Mid | 16QAM | 22.23 | 2.44 | 24.67 | PASS |
| Band25 | 5 | 26365 | 1 | #Max | 16QAM | 22.14 | 2.44 | 24.58 | PASS |
| Band25 | 5 | 26365 | 12 | #0 | 16QAM | 21.34 | 2.44 | 23.78 | PASS |
| Band25 | 5 | 26365 | 12 | #Mid | 16QAM | 21.38 | 2.44 | 23.82 | PASS |
| Band25 | 5 | 26365 | 12 | #Max | 16QAM | 21.35 | 2.44 | 23.79 | PASS |

CHENZHEN

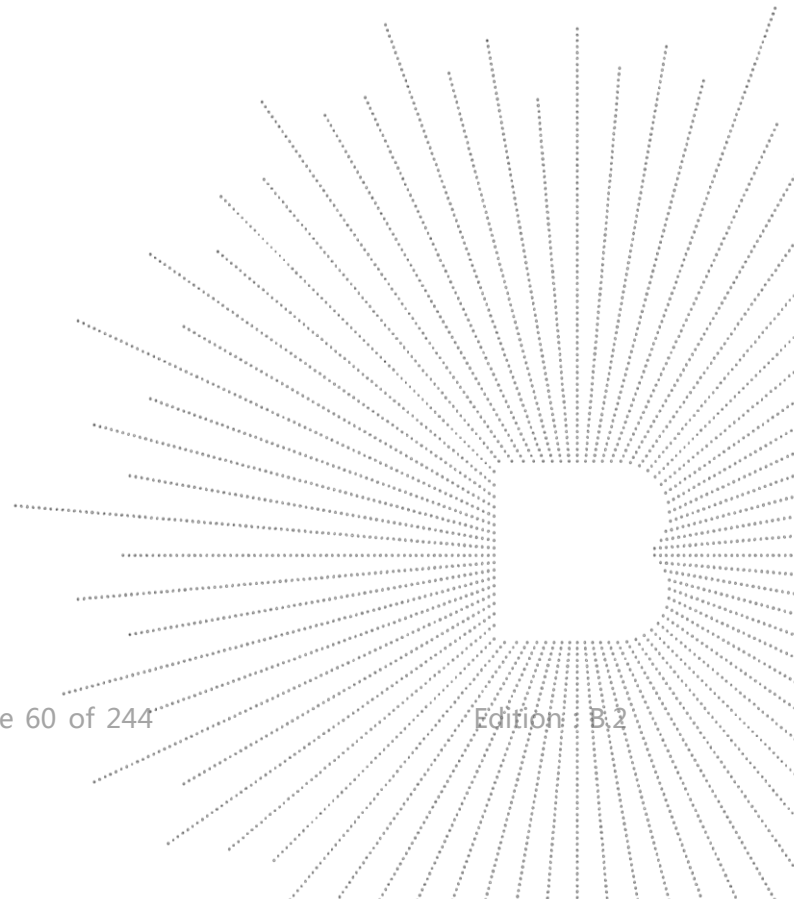
| | | | | | | | | | |
|--------|----|-------|----|------|-------|-------|------|-------|------|
| Band25 | 5 | 26365 | 25 | #0 | 16QAM | 21.56 | 2.44 | 24.00 | PASS |
| Band25 | 5 | 26665 | 1 | #0 | QPSK | 23.92 | 2.44 | 26.36 | PASS |
| Band25 | 5 | 26665 | 1 | #Mid | QPSK | 23.96 | 2.44 | 26.40 | PASS |
| Band25 | 5 | 26665 | 1 | #Max | QPSK | 23.98 | 2.44 | 26.42 | PASS |
| Band25 | 5 | 26665 | 12 | #0 | QPSK | 23.00 | 2.44 | 25.44 | PASS |
| Band25 | 5 | 26665 | 12 | #Mid | QPSK | 23.00 | 2.44 | 25.44 | PASS |
| Band25 | 5 | 26665 | 12 | #Max | QPSK | 22.95 | 2.44 | 25.39 | PASS |
| Band25 | 5 | 26665 | 25 | #0 | QPSK | 23.09 | 2.44 | 25.53 | PASS |
| Band25 | 5 | 26665 | 1 | #0 | 16QAM | 22.95 | 2.44 | 25.39 | PASS |
| Band25 | 5 | 26665 | 1 | #Mid | 16QAM | 22.98 | 2.44 | 25.42 | PASS |
| Band25 | 5 | 26665 | 1 | #Max | 16QAM | 22.98 | 2.44 | 25.42 | PASS |
| Band25 | 5 | 26665 | 12 | #0 | 16QAM | 21.95 | 2.44 | 24.39 | PASS |
| Band25 | 5 | 26665 | 12 | #Mid | 16QAM | 22.35 | 2.44 | 24.79 | PASS |
| Band25 | 5 | 26665 | 12 | #Max | 16QAM | 22.39 | 2.44 | 24.83 | PASS |
| Band25 | 5 | 26665 | 25 | #0 | 16QAM | 22.42 | 2.44 | 24.86 | PASS |
| Band25 | 10 | 26090 | 1 | #0 | QPSK | 23.30 | 2.44 | 25.74 | PASS |
| Band25 | 10 | 26090 | 1 | #Mid | QPSK | 23.45 | 2.44 | 25.89 | PASS |
| Band25 | 10 | 26090 | 1 | #Max | QPSK | 23.57 | 2.44 | 26.01 | PASS |
| Band25 | 10 | 26090 | 25 | #0 | QPSK | 22.39 | 2.44 | 24.83 | PASS |
| Band25 | 10 | 26090 | 25 | #Mid | QPSK | 22.37 | 2.44 | 24.81 | PASS |
| Band25 | 10 | 26090 | 25 | #Max | QPSK | 22.55 | 2.44 | 24.99 | PASS |
| Band25 | 10 | 26090 | 50 | #0 | QPSK | 22.47 | 2.44 | 24.91 | PASS |
| Band25 | 10 | 26090 | 1 | #0 | 16QAM | 23.27 | 2.44 | 25.71 | PASS |
| Band25 | 10 | 26090 | 1 | #Mid | 16QAM | 23.50 | 2.44 | 25.94 | PASS |
| Band25 | 10 | 26090 | 1 | #Max | 16QAM | 23.72 | 2.44 | 26.16 | PASS |
| Band25 | 10 | 26090 | 25 | #0 | 16QAM | 21.67 | 2.44 | 24.11 | PASS |
| Band25 | 10 | 26090 | 25 | #Mid | 16QAM | 21.67 | 2.44 | 24.11 | PASS |
| Band25 | 10 | 26090 | 25 | #Max | 16QAM | 21.39 | 2.44 | 23.83 | PASS |
| Band25 | 10 | 26090 | 50 | #0 | 16QAM | 21.85 | 2.44 | 24.29 | PASS |
| Band25 | 10 | 26365 | 1 | #0 | QPSK | 23.46 | 2.44 | 25.90 | PASS |
| Band25 | 10 | 26365 | 1 | #Mid | QPSK | 23.49 | 2.44 | 25.93 | PASS |
| Band25 | 10 | 26365 | 1 | #Max | QPSK | 23.58 | 2.44 | 26.02 | PASS |
| Band25 | 10 | 26365 | 25 | #0 | QPSK | 22.52 | 2.44 | 24.96 | PASS |
| Band25 | 10 | 26365 | 25 | #Mid | QPSK | 22.48 | 2.44 | 24.92 | PASS |
| Band25 | 10 | 26365 | 25 | #Max | QPSK | 22.57 | 2.44 | 25.01 | PASS |
| Band25 | 10 | 26365 | 50 | #0 | QPSK | 22.59 | 2.44 | 25.03 | PASS |
| Band25 | 10 | 26365 | 1 | #0 | 16QAM | 22.61 | 2.44 | 25.05 | PASS |
| Band25 | 10 | 26365 | 1 | #Mid | 16QAM | 22.51 | 2.44 | 24.95 | PASS |
| Band25 | 10 | 26365 | 1 | #Max | 16QAM | 22.52 | 2.44 | 24.96 | PASS |
| Band25 | 10 | 26365 | 25 | #0 | 16QAM | 21.55 | 2.44 | 23.99 | PASS |
| Band25 | 10 | 26365 | 25 | #Mid | 16QAM | 21.58 | 2.44 | 24.02 | PASS |
| Band25 | 10 | 26365 | 25 | #Max | 16QAM | 21.92 | 2.44 | 24.36 | PASS |
| Band25 | 10 | 26365 | 50 | #0 | 16QAM | 21.60 | 2.44 | 24.04 | PASS |
| Band25 | 10 | 26640 | 1 | #0 | QPSK | 23.68 | 2.44 | 26.12 | PASS |
| Band25 | 10 | 26640 | 1 | #Mid | QPSK | 23.95 | 2.44 | 26.39 | PASS |
| Band25 | 10 | 26640 | 1 | #Max | QPSK | 24.21 | 2.44 | 26.65 | PASS |
| Band25 | 10 | 26640 | 25 | #0 | QPSK | 22.73 | 2.44 | 25.17 | PASS |
| Band25 | 10 | 26640 | 25 | #Mid | QPSK | 22.80 | 2.44 | 25.24 | PASS |
| Band25 | 10 | 26640 | 25 | #Max | QPSK | 23.01 | 2.44 | 25.45 | PASS |
| Band25 | 10 | 26640 | 50 | #0 | QPSK | 22.86 | 2.44 | 25.30 | PASS |
| Band25 | 10 | 26640 | 1 | #0 | 16QAM | 22.63 | 2.44 | 25.07 | PASS |
| Band25 | 10 | 26640 | 1 | #Mid | 16QAM | 22.74 | 2.44 | 25.18 | PASS |
| Band25 | 10 | 26640 | 1 | #Max | 16QAM | 23.01 | 2.44 | 25.45 | PASS |
| Band25 | 10 | 26640 | 25 | #0 | 16QAM | 21.81 | 2.44 | 24.25 | PASS |
| Band25 | 10 | 26640 | 25 | #Mid | 16QAM | 21.78 | 2.44 | 24.22 | PASS |
| Band25 | 10 | 26640 | 25 | #Max | 16QAM | 22.41 | 2.44 | 24.85 | PASS |
| Band25 | 10 | 26640 | 50 | #0 | 16QAM | 21.83 | 2.44 | 24.27 | PASS |

| | | | | | | | | | |
|--------|----|-------|-----|------|-------|-------|------|-------|------|
| Band25 | 15 | 26115 | 1 | #0 | QPSK | 23.27 | 2.44 | 25.71 | PASS |
| Band25 | 15 | 26115 | 1 | #Mid | QPSK | 23.53 | 2.44 | 25.97 | PASS |
| Band25 | 15 | 26115 | 1 | #Max | QPSK | 23.64 | 2.44 | 26.08 | PASS |
| Band25 | 15 | 26115 | 36 | #0 | QPSK | 22.46 | 2.44 | 24.90 | PASS |
| Band25 | 15 | 26115 | 36 | #Mid | QPSK | 22.44 | 2.44 | 24.88 | PASS |
| Band25 | 15 | 26115 | 36 | #Max | QPSK | 22.57 | 2.44 | 25.01 | PASS |
| Band25 | 15 | 26115 | 75 | #0 | QPSK | 22.46 | 2.44 | 24.90 | PASS |
| Band25 | 15 | 26115 | 1 | #0 | 16QAM | 23.30 | 2.44 | 25.74 | PASS |
| Band25 | 15 | 26115 | 1 | #Mid | 16QAM | 23.54 | 2.44 | 25.98 | PASS |
| Band25 | 15 | 26115 | 1 | #Max | 16QAM | 23.60 | 2.44 | 26.04 | PASS |
| Band25 | 15 | 26115 | 36 | #0 | 16QAM | 21.79 | 2.44 | 24.23 | PASS |
| Band25 | 15 | 26115 | 36 | #Mid | 16QAM | 21.46 | 2.44 | 23.90 | PASS |
| Band25 | 15 | 26115 | 36 | #Max | 16QAM | 21.91 | 2.44 | 24.35 | PASS |
| Band25 | 15 | 26115 | 75 | #0 | 16QAM | 21.47 | 2.44 | 23.91 | PASS |
| Band25 | 15 | 26365 | 1 | #0 | QPSK | 23.38 | 2.44 | 25.82 | PASS |
| Band25 | 15 | 26365 | 1 | #Mid | QPSK | 23.53 | 2.44 | 25.97 | PASS |
| Band25 | 15 | 26365 | 1 | #Max | QPSK | 23.60 | 2.44 | 26.04 | PASS |
| Band25 | 15 | 26365 | 36 | #0 | QPSK | 22.54 | 2.44 | 24.98 | PASS |
| Band25 | 15 | 26365 | 36 | #Mid | QPSK | 22.60 | 2.44 | 25.04 | PASS |
| Band25 | 15 | 26365 | 36 | #Max | QPSK | 22.47 | 2.44 | 24.91 | PASS |
| Band25 | 15 | 26365 | 75 | #0 | QPSK | 22.46 | 2.44 | 24.90 | PASS |
| Band25 | 15 | 26365 | 1 | #0 | 16QAM | 22.51 | 2.44 | 24.95 | PASS |
| Band25 | 15 | 26365 | 1 | #Mid | 16QAM | 22.53 | 2.44 | 24.97 | PASS |
| Band25 | 15 | 26365 | 1 | #Max | 16QAM | 22.69 | 2.44 | 25.13 | PASS |
| Band25 | 15 | 26365 | 36 | #0 | 16QAM | 21.67 | 2.44 | 24.11 | PASS |
| Band25 | 15 | 26365 | 36 | #Mid | 16QAM | 21.58 | 2.44 | 24.02 | PASS |
| Band25 | 15 | 26365 | 36 | #Max | 16QAM | 22.00 | 2.44 | 24.44 | PASS |
| Band25 | 15 | 26365 | 75 | #0 | 16QAM | 21.46 | 2.44 | 23.90 | PASS |
| Band25 | 15 | 26615 | 1 | #0 | QPSK | 23.30 | 2.44 | 25.74 | PASS |
| Band25 | 15 | 26615 | 1 | #Mid | QPSK | 23.74 | 2.44 | 26.18 | PASS |
| Band25 | 15 | 26615 | 1 | #Max | QPSK | 23.96 | 2.44 | 26.40 | PASS |
| Band25 | 15 | 26615 | 36 | #0 | QPSK | 22.73 | 2.44 | 25.17 | PASS |
| Band25 | 15 | 26615 | 36 | #Mid | QPSK | 22.80 | 2.44 | 25.24 | PASS |
| Band25 | 15 | 26615 | 36 | #Max | QPSK | 23.02 | 2.44 | 25.46 | PASS |
| Band25 | 15 | 26615 | 75 | #0 | QPSK | 22.74 | 2.44 | 25.18 | PASS |
| Band25 | 15 | 26615 | 1 | #0 | 16QAM | 23.14 | 2.44 | 25.58 | PASS |
| Band25 | 15 | 26615 | 1 | #Mid | 16QAM | 23.58 | 2.44 | 26.02 | PASS |
| Band25 | 15 | 26615 | 1 | #Max | 16QAM | 23.86 | 2.44 | 26.30 | PASS |
| Band25 | 15 | 26615 | 36 | #0 | 16QAM | 21.66 | 2.44 | 24.10 | PASS |
| Band25 | 15 | 26615 | 36 | #Mid | 16QAM | 21.75 | 2.44 | 24.19 | PASS |
| Band25 | 15 | 26615 | 36 | #Max | 16QAM | 21.95 | 2.44 | 24.39 | PASS |
| Band25 | 15 | 26615 | 75 | #0 | 16QAM | 21.87 | 2.44 | 24.31 | PASS |
| Band25 | 20 | 26140 | 1 | #0 | QPSK | 23.56 | 2.44 | 26.00 | PASS |
| Band25 | 20 | 26140 | 1 | #Mid | QPSK | 23.85 | 2.44 | 26.29 | PASS |
| Band25 | 20 | 26140 | 1 | #Max | QPSK | 23.82 | 2.44 | 26.26 | PASS |
| Band25 | 20 | 26140 | 50 | #0 | QPSK | 22.49 | 2.44 | 24.93 | PASS |
| Band25 | 20 | 26140 | 50 | #Mid | QPSK | 22.67 | 2.44 | 25.11 | PASS |
| Band25 | 20 | 26140 | 50 | #Max | QPSK | 22.64 | 2.44 | 25.08 | PASS |
| Band25 | 20 | 26140 | 100 | #0 | QPSK | 22.63 | 2.44 | 25.07 | PASS |
| Band25 | 20 | 26140 | 1 | #0 | 16QAM | 22.47 | 2.44 | 24.91 | PASS |
| Band25 | 20 | 26140 | 1 | #Mid | 16QAM | 22.60 | 2.44 | 25.04 | PASS |
| Band25 | 20 | 26140 | 1 | #Max | 16QAM | 22.78 | 2.44 | 25.22 | PASS |
| Band25 | 20 | 26140 | 50 | #0 | 16QAM | 21.73 | 2.44 | 24.17 | PASS |
| Band25 | 20 | 26140 | 50 | #Mid | 16QAM | 21.58 | 2.44 | 24.02 | PASS |
| Band25 | 20 | 26140 | 50 | #Max | 16QAM | 22.05 | 2.44 | 24.49 | PASS |
| Band25 | 20 | 26140 | 100 | #0 | 16QAM | 21.57 | 2.44 | 24.01 | PASS |
| Band25 | 20 | 26365 | 1 | #0 | QPSK | 23.68 | 2.44 | 26.12 | PASS |

BCTC
 BCTC
 PPR
 Report

| | | | | | | | | | |
|--------|----|-------|-----|------|-------|-------|------|-------|------|
| Band25 | 20 | 26365 | 1 | #Mid | QPSK | 23.62 | 2.44 | 26.06 | PASS |
| Band25 | 20 | 26365 | 1 | #Max | QPSK | 23.61 | 2.44 | 26.05 | PASS |
| Band25 | 20 | 26365 | 50 | #0 | QPSK | 22.56 | 2.44 | 25.00 | PASS |
| Band25 | 20 | 26365 | 50 | #Mid | QPSK | 22.47 | 2.44 | 24.91 | PASS |
| Band25 | 20 | 26365 | 50 | #Max | QPSK | 22.40 | 2.44 | 24.84 | PASS |
| Band25 | 20 | 26365 | 100 | #0 | QPSK | 22.65 | 2.44 | 25.09 | PASS |
| Band25 | 20 | 26365 | 1 | #0 | 16QAM | 22.25 | 2.44 | 24.69 | PASS |
| Band25 | 20 | 26365 | 1 | #Mid | 16QAM | 22.06 | 2.44 | 24.50 | PASS |
| Band25 | 20 | 26365 | 1 | #Max | 16QAM | 21.96 | 2.44 | 24.40 | PASS |
| Band25 | 20 | 26365 | 50 | #0 | 16QAM | 21.58 | 2.44 | 24.02 | PASS |
| Band25 | 20 | 26365 | 50 | #Mid | 16QAM | 21.46 | 2.44 | 23.90 | PASS |
| Band25 | 20 | 26365 | 50 | #Max | 16QAM | 21.82 | 2.44 | 24.26 | PASS |
| Band25 | 20 | 26365 | 100 | #0 | 16QAM | 21.58 | 2.44 | 24.02 | PASS |
| Band25 | 20 | 26590 | 1 | #0 | QPSK | 23.46 | 2.44 | 25.90 | PASS |
| Band25 | 20 | 26590 | 1 | #Mid | QPSK | 23.78 | 2.44 | 26.22 | PASS |
| Band25 | 20 | 26590 | 1 | #Max | QPSK | 24.04 | 2.44 | 26.48 | PASS |
| Band25 | 20 | 26590 | 50 | #0 | QPSK | 22.40 | 2.44 | 24.84 | PASS |
| Band25 | 20 | 26590 | 50 | #Mid | QPSK | 22.77 | 2.44 | 25.21 | PASS |
| Band25 | 20 | 26590 | 50 | #Max | QPSK | 22.86 | 2.44 | 25.30 | PASS |
| Band25 | 20 | 26590 | 100 | #0 | QPSK | 22.69 | 2.44 | 25.13 | PASS |
| Band25 | 20 | 26590 | 1 | #0 | 16QAM | 22.40 | 2.44 | 24.84 | PASS |
| Band25 | 20 | 26590 | 1 | #Mid | 16QAM | 22.69 | 2.44 | 25.13 | PASS |
| Band25 | 20 | 26590 | 1 | #Max | 16QAM | 23.08 | 2.44 | 25.52 | PASS |
| Band25 | 20 | 26590 | 50 | #0 | 16QAM | 21.92 | 2.44 | 24.36 | PASS |
| Band25 | 20 | 26590 | 50 | #Mid | 16QAM | 21.77 | 2.44 | 24.21 | PASS |
| Band25 | 20 | 26590 | 50 | #Max | 16QAM | 21.88 | 2.44 | 24.32 | PASS |
| Band25 | 20 | 26590 | 100 | #0 | 16QAM | 21.74 | 2.44 | 24.18 | PASS |

TE
TC
OV
t See



| Band | Bandwidth (MHz) | UL Channel | RB Size | RB Position | Modulation | Power (dBm) | Gain (dBm) | ERP (dBm) | Verdict |
|-----------------|-----------------|------------|---------|-------------|------------|-------------|------------|-----------|---------|
| Band26(814-824) | 1.4 | 26697 | 1 | #0 | QPSK | 24.44 | 0 | 22.29 | PASS |
| Band26(814-824) | 1.4 | 26697 | 1 | #Mid | QPSK | 24.43 | 0 | 22.28 | PASS |
| Band26(814-824) | 1.4 | 26697 | 1 | #Max | QPSK | 24.41 | 0 | 22.26 | PASS |
| Band26(814-824) | 1.4 | 26697 | 3 | #0 | QPSK | 23.82 | 0 | 21.67 | PASS |
| Band26(814-824) | 1.4 | 26697 | 3 | #Mid | QPSK | 23.76 | 0 | 21.61 | PASS |
| Band26(814-824) | 1.4 | 26697 | 3 | #Max | QPSK | 23.76 | 0 | 21.61 | PASS |
| Band26(814-824) | 1.4 | 26697 | 6 | #0 | QPSK | 21.70 | 0 | 19.55 | PASS |
| Band26(814-824) | 1.4 | 26697 | 1 | #0 | 16QAM | 24.97 | 0 | 22.82 | PASS |
| Band26(814-824) | 1.4 | 26697 | 1 | #Mid | 16QAM | 24.90 | 0 | 22.75 | PASS |
| Band26(814-824) | 1.4 | 26697 | 1 | #Max | 16QAM | 24.95 | 0 | 22.80 | PASS |
| Band26(814-824) | 1.4 | 26697 | 3 | #0 | 16QAM | 23.10 | 0 | 20.95 | PASS |
| Band26(814-824) | 1.4 | 26697 | 3 | #Mid | 16QAM | 23.09 | 0 | 20.94 | PASS |
| Band26(814-824) | 1.4 | 26697 | 3 | #Max | 16QAM | 23.17 | 0 | 21.02 | PASS |
| Band26(814-824) | 1.4 | 26697 | 6 | #0 | 16QAM | 21.89 | 0 | 19.74 | PASS |
| Band26(814-824) | 1.4 | 26740 | 1 | #0 | QPSK | 24.28 | 0 | 22.13 | PASS |
| Band26(814-824) | 1.4 | 26740 | 1 | #Mid | QPSK | 24.26 | 0 | 22.11 | PASS |
| Band26(814-824) | 1.4 | 26740 | 1 | #Max | QPSK | 24.25 | 0 | 22.10 | PASS |
| Band26(814-824) | 1.4 | 26740 | 3 | #0 | QPSK | 23.62 | 0 | 21.47 | PASS |
| Band26(814-824) | 1.4 | 26740 | 3 | #Mid | QPSK | 23.73 | 0 | 21.58 | PASS |
| Band26(814-824) | 1.4 | 26740 | 3 | #Max | QPSK | 23.68 | 0 | 21.53 | PASS |
| Band26(814-824) | 1.4 | 26740 | 6 | #0 | QPSK | 21.62 | 0 | 19.47 | PASS |
| Band26(814-824) | 1.4 | 26740 | 1 | #0 | 16QAM | 24.36 | 0 | 22.21 | PASS |
| Band26(814-824) | 1.4 | 26740 | 1 | #Mid | 16QAM | 24.36 | 0 | 22.21 | PASS |
| Band26(814-824) | 1.4 | 26740 | 1 | #Max | 16QAM | 24.28 | 0 | 22.13 | PASS |
| Band26(814-824) | 1.4 | 26740 | 3 | #0 | 16QAM | 22.86 | 0 | 20.71 | PASS |
| Band26(814-824) | 1.4 | 26740 | 3 | #Mid | 16QAM | 22.84 | 0 | 20.69 | PASS |
| Band26(814-824) | 1.4 | 26740 | 3 | #Max | 16QAM | 22.81 | 0 | 20.66 | PASS |
| Band26(814-824) | 1.4 | 26740 | 6 | #0 | 16QAM | 21.78 | 0 | 19.63 | PASS |
| Band26(814-824) | 1.4 | 26783 | 1 | #0 | QPSK | 24.25 | 0 | 22.10 | PASS |
| Band26(814-824) | 1.4 | 26783 | 1 | #Mid | QPSK | 24.24 | 0 | 22.09 | PASS |
| Band26(814-824) | 1.4 | 26783 | 1 | #Max | QPSK | 24.26 | 0 | 22.11 | PASS |
| Band26(814-824) | 1.4 | 26783 | 3 | #0 | QPSK | 23.68 | 0 | 21.53 | PASS |
| Band26(814-824) | 1.4 | 26783 | 3 | #Mid | QPSK | 23.72 | 0 | 21.57 | PASS |
| Band26(814-824) | 1.4 | 26783 | 3 | #Max | QPSK | 23.65 | 0 | 21.50 | PASS |
| Band26(814-824) | 1.4 | 26783 | 6 | #0 | QPSK | 21.66 | 0 | 19.51 | PASS |
| Band26(814-824) | 1.4 | 26783 | 1 | #0 | 16QAM | 23.66 | 0 | 21.51 | PASS |
| Band26(814-824) | 1.4 | 26783 | 1 | #Mid | 16QAM | 23.86 | 0 | 21.71 | PASS |
| Band26(814-824) | 1.4 | 26783 | 1 | #Max | 16QAM | 24.05 | 0 | 21.90 | PASS |
| Band26(814-824) | 1.4 | 26783 | 3 | #0 | 16QAM | 23.09 | 0 | 20.94 | PASS |
| Band26(814-824) | 1.4 | 26783 | 3 | #Mid | 16QAM | 23.06 | 0 | 20.91 | PASS |
| Band26(814-824) | 1.4 | 26783 | 3 | #Max | 16QAM | 23.11 | 0 | 20.96 | PASS |
| Band26(814-824) | 1.4 | 26783 | 6 | #0 | 16QAM | 21.84 | 0 | 19.69 | PASS |
| Band26(814-824) | 3 | 26705 | 1 | #0 | QPSK | 24.27 | 0 | 22.12 | PASS |
| Band26(814-824) | 3 | 26705 | 1 | #Mid | QPSK | 24.26 | 0 | 22.11 | PASS |
| Band26(814-824) | 3 | 26705 | 1 | #Max | QPSK | 24.27 | 0 | 22.12 | PASS |
| Band26(814-824) | 3 | 26705 | 8 | #0 | QPSK | 21.76 | 0 | 19.61 | PASS |
| Band26(814-824) | 3 | 26705 | 8 | #Mid | QPSK | 21.72 | 0 | 19.57 | PASS |
| Band26(814-824) | 3 | 26705 | 8 | #Max | QPSK | 21.76 | 0 | 19.61 | PASS |
| Band26(814-824) | 3 | 26705 | 15 | #0 | QPSK | 21.68 | 0 | 19.53 | PASS |
| Band26(814-824) | 3 | 26705 | 1 | #0 | 16QAM | 24.91 | 0 | 22.76 | PASS |
| Band26(814-824) | 3 | 26705 | 1 | #Mid | 16QAM | 24.80 | 0 | 22.65 | PASS |
| Band26(814-824) | 3 | 26705 | 1 | #Max | 16QAM | 24.79 | 0 | 22.64 | PASS |
| Band26(814-824) | 3 | 26705 | 8 | #0 | 16QAM | 21.59 | 0 | 19.44 | PASS |
| Band26(814-824) | 3 | 26705 | 8 | #Mid | 16QAM | 21.52 | 0 | 19.37 | PASS |

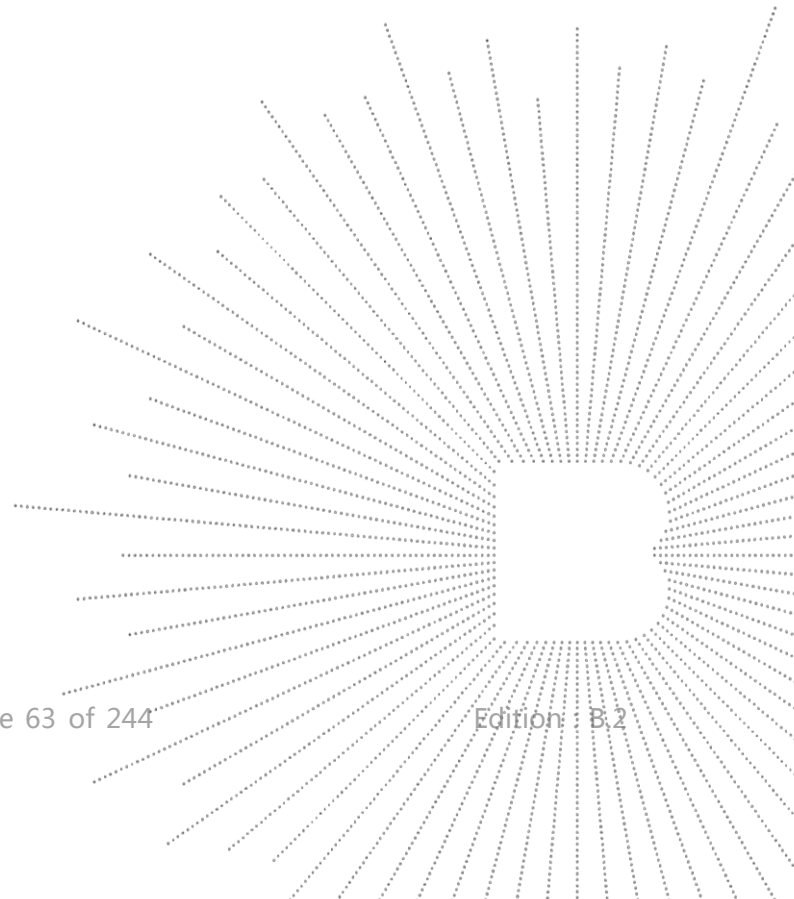


| | | | | | | | | | |
|-----------------|---|-------|----|------|-------|-------|---|-------|------|
| Band26(814-824) | 3 | 26705 | 8 | #Max | 16QAM | 21.50 | 0 | 19.35 | PASS |
| Band26(814-824) | 3 | 26705 | 15 | #0 | 16QAM | 21.77 | 0 | 19.62 | PASS |
| Band26(814-824) | 3 | 26740 | 1 | #0 | QPSK | 24.33 | 0 | 22.18 | PASS |
| Band26(814-824) | 3 | 26740 | 1 | #Mid | QPSK | 24.35 | 0 | 22.20 | PASS |
| Band26(814-824) | 3 | 26740 | 1 | #Max | QPSK | 24.37 | 0 | 22.22 | PASS |
| Band26(814-824) | 3 | 26740 | 8 | #0 | QPSK | 21.67 | 0 | 19.52 | PASS |
| Band26(814-824) | 3 | 26740 | 8 | #Mid | QPSK | 21.75 | 0 | 19.60 | PASS |
| Band26(814-824) | 3 | 26740 | 8 | #Max | QPSK | 21.65 | 0 | 19.50 | PASS |
| Band26(814-824) | 3 | 26740 | 15 | #0 | QPSK | 21.72 | 0 | 19.57 | PASS |
| Band26(814-824) | 3 | 26740 | 1 | #0 | 16QAM | 23.64 | 0 | 21.49 | PASS |
| Band26(814-824) | 3 | 26740 | 1 | #Mid | 16QAM | 23.66 | 0 | 21.51 | PASS |
| Band26(814-824) | 3 | 26740 | 1 | #Max | 16QAM | 23.67 | 0 | 21.52 | PASS |
| Band26(814-824) | 3 | 26740 | 8 | #0 | 16QAM | 21.85 | 0 | 19.70 | PASS |
| Band26(814-824) | 3 | 26740 | 8 | #Mid | 16QAM | 21.83 | 0 | 19.68 | PASS |
| Band26(814-824) | 3 | 26740 | 8 | #Max | 16QAM | 21.82 | 0 | 19.67 | PASS |
| Band26(814-824) | 3 | 26740 | 15 | #0 | 16QAM | 21.68 | 0 | 19.53 | PASS |
| Band26(814-824) | 3 | 26775 | 1 | #0 | QPSK | 24.17 | 0 | 22.02 | PASS |
| Band26(814-824) | 3 | 26775 | 1 | #Mid | QPSK | 24.15 | 0 | 22.00 | PASS |
| Band26(814-824) | 3 | 26775 | 1 | #Max | QPSK | 24.18 | 0 | 22.03 | PASS |
| Band26(814-824) | 3 | 26775 | 8 | #0 | QPSK | 21.63 | 0 | 19.48 | PASS |
| Band26(814-824) | 3 | 26775 | 8 | #Mid | QPSK | 21.74 | 0 | 19.59 | PASS |
| Band26(814-824) | 3 | 26775 | 8 | #Max | QPSK | 21.68 | 0 | 19.53 | PASS |
| Band26(814-824) | 3 | 26775 | 15 | #0 | QPSK | 21.68 | 0 | 19.53 | PASS |
| Band26(814-824) | 3 | 26775 | 1 | #0 | 16QAM | 24.14 | 0 | 21.99 | PASS |
| Band26(814-824) | 3 | 26775 | 1 | #Mid | 16QAM | 24.08 | 0 | 21.93 | PASS |
| Band26(814-824) | 3 | 26775 | 1 | #Max | 16QAM | 24.08 | 0 | 21.93 | PASS |
| Band26(814-824) | 3 | 26775 | 8 | #0 | 16QAM | 21.63 | 0 | 19.48 | PASS |
| Band26(814-824) | 3 | 26775 | 8 | #Mid | 16QAM | 21.60 | 0 | 19.45 | PASS |
| Band26(814-824) | 3 | 26775 | 8 | #Max | 16QAM | 21.70 | 0 | 19.55 | PASS |
| Band26(814-824) | 3 | 26775 | 15 | #0 | 16QAM | 21.82 | 0 | 19.67 | PASS |
| Band26(814-824) | 5 | 26715 | 1 | #0 | QPSK | 24.17 | 0 | 22.02 | PASS |
| Band26(814-824) | 5 | 26715 | 1 | #Mid | QPSK | 24.13 | 0 | 21.98 | PASS |
| Band26(814-824) | 5 | 26715 | 1 | #Max | QPSK | 24.03 | 0 | 21.88 | PASS |
| Band26(814-824) | 5 | 26715 | 12 | #0 | QPSK | 21.69 | 0 | 19.54 | PASS |
| Band26(814-824) | 5 | 26715 | 12 | #Mid | QPSK | 21.56 | 0 | 19.41 | PASS |
| Band26(814-824) | 5 | 26715 | 12 | #Max | QPSK | 21.54 | 0 | 19.39 | PASS |
| Band26(814-824) | 5 | 26715 | 25 | #0 | QPSK | 21.57 | 0 | 19.42 | PASS |
| Band26(814-824) | 5 | 26715 | 1 | #0 | 16QAM | 23.98 | 0 | 21.83 | PASS |
| Band26(814-824) | 5 | 26715 | 1 | #Mid | 16QAM | 23.91 | 0 | 21.76 | PASS |
| Band26(814-824) | 5 | 26715 | 1 | #Max | 16QAM | 23.95 | 0 | 21.80 | PASS |
| Band26(814-824) | 5 | 26715 | 12 | #0 | 16QAM | 21.55 | 0 | 19.40 | PASS |
| Band26(814-824) | 5 | 26715 | 12 | #Mid | 16QAM | 21.52 | 0 | 19.37 | PASS |
| Band26(814-824) | 5 | 26715 | 12 | #Max | 16QAM | 21.44 | 0 | 19.29 | PASS |
| Band26(814-824) | 5 | 26715 | 25 | #0 | 16QAM | 21.59 | 0 | 19.44 | PASS |
| Band26(814-824) | 5 | 26740 | 1 | #0 | QPSK | 24.20 | 0 | 22.05 | PASS |
| Band26(814-824) | 5 | 26740 | 1 | #Mid | QPSK | 24.13 | 0 | 21.98 | PASS |
| Band26(814-824) | 5 | 26740 | 1 | #Max | QPSK | 24.12 | 0 | 21.97 | PASS |
| Band26(814-824) | 5 | 26740 | 12 | #0 | QPSK | 21.52 | 0 | 19.37 | PASS |
| Band26(814-824) | 5 | 26740 | 12 | #Mid | QPSK | 21.61 | 0 | 19.46 | PASS |
| Band26(814-824) | 5 | 26740 | 12 | #Max | QPSK | 21.58 | 0 | 19.43 | PASS |
| Band26(814-824) | 5 | 26740 | 25 | #0 | QPSK | 21.64 | 0 | 19.49 | PASS |
| Band26(814-824) | 5 | 26740 | 1 | #0 | 16QAM | 23.72 | 0 | 21.57 | PASS |
| Band26(814-824) | 5 | 26740 | 1 | #Mid | 16QAM | 23.77 | 0 | 21.62 | PASS |
| Band26(814-824) | 5 | 26740 | 1 | #Max | 16QAM | 23.69 | 0 | 21.54 | PASS |
| Band26(814-824) | 5 | 26740 | 12 | #0 | 16QAM | 21.35 | 0 | 19.20 | PASS |
| Band26(814-824) | 5 | 26740 | 12 | #Mid | 16QAM | 21.57 | 0 | 19.42 | PASS |
| Band26(814-824) | 5 | 26740 | 12 | #Max | 16QAM | 21.48 | 0 | 19.33 | PASS |

CO. LTD

| | | | | | | | | | |
|-----------------|----|-------|----|------|-------|-------|---|-------|------|
| Band26(814-824) | 5 | 26740 | 25 | #0 | 16QAM | 21.75 | 0 | 19.60 | PASS |
| Band26(814-824) | 5 | 26765 | 1 | #0 | QPSK | 23.99 | 0 | 21.84 | PASS |
| Band26(814-824) | 5 | 26765 | 1 | #Mid | QPSK | 23.97 | 0 | 21.82 | PASS |
| Band26(814-824) | 5 | 26765 | 1 | #Max | QPSK | 23.98 | 0 | 21.83 | PASS |
| Band26(814-824) | 5 | 26765 | 12 | #0 | QPSK | 21.69 | 0 | 19.54 | PASS |
| Band26(814-824) | 5 | 26765 | 12 | #Mid | QPSK | 21.62 | 0 | 19.47 | PASS |
| Band26(814-824) | 5 | 26765 | 12 | #Max | QPSK | 21.67 | 0 | 19.52 | PASS |
| Band26(814-824) | 5 | 26765 | 25 | #0 | QPSK | 21.65 | 0 | 19.50 | PASS |
| Band26(814-824) | 5 | 26765 | 1 | #0 | 16QAM | 24.18 | 0 | 22.03 | PASS |
| Band26(814-824) | 5 | 26765 | 1 | #Mid | 16QAM | 24.20 | 0 | 22.05 | PASS |
| Band26(814-824) | 5 | 26765 | 1 | #Max | 16QAM | 24.26 | 0 | 22.11 | PASS |
| Band26(814-824) | 5 | 26765 | 12 | #0 | 16QAM | 21.54 | 0 | 19.39 | PASS |
| Band26(814-824) | 5 | 26765 | 12 | #Mid | 16QAM | 21.49 | 0 | 19.34 | PASS |
| Band26(814-824) | 5 | 26765 | 12 | #Max | 16QAM | 21.62 | 0 | 19.47 | PASS |
| Band26(814-824) | 5 | 26765 | 25 | #0 | 16QAM | 21.65 | 0 | 19.50 | PASS |
| Band26(814-824) | 10 | 26740 | 1 | #0 | QPSK | 24.25 | 0 | 22.10 | PASS |
| Band26(814-824) | 10 | 26740 | 1 | #Mid | QPSK | 24.10 | 0 | 21.95 | PASS |
| Band26(814-824) | 10 | 26740 | 1 | #Max | QPSK | 24.18 | 0 | 22.03 | PASS |
| Band26(814-824) | 10 | 26740 | 25 | #0 | QPSK | 22.09 | 0 | 19.94 | PASS |
| Band26(814-824) | 10 | 26740 | 25 | #Mid | QPSK | 22.22 | 0 | 20.07 | PASS |
| Band26(814-824) | 10 | 26740 | 25 | #Max | QPSK | 22.14 | 0 | 19.99 | PASS |
| Band26(814-824) | 10 | 26740 | 50 | #0 | QPSK | 22.19 | 0 | 20.04 | PASS |
| Band26(814-824) | 10 | 26740 | 1 | #0 | 16QAM | 24.78 | 0 | 22.63 | PASS |
| Band26(814-824) | 10 | 26740 | 1 | #Mid | 16QAM | 24.77 | 0 | 22.62 | PASS |
| Band26(814-824) | 10 | 26740 | 1 | #Max | 16QAM | 24.74 | 0 | 22.59 | PASS |
| Band26(814-824) | 10 | 26740 | 25 | #0 | 16QAM | 22.08 | 0 | 19.93 | PASS |
| Band26(814-824) | 10 | 26740 | 25 | #Mid | 16QAM | 22.16 | 0 | 20.01 | PASS |
| Band26(814-824) | 10 | 26740 | 25 | #Max | 16QAM | 22.13 | 0 | 19.98 | PASS |
| Band26(814-824) | 10 | 26740 | 50 | #0 | 16QAM | 22.20 | 0 | 20.05 | PASS |

CHENZHEN



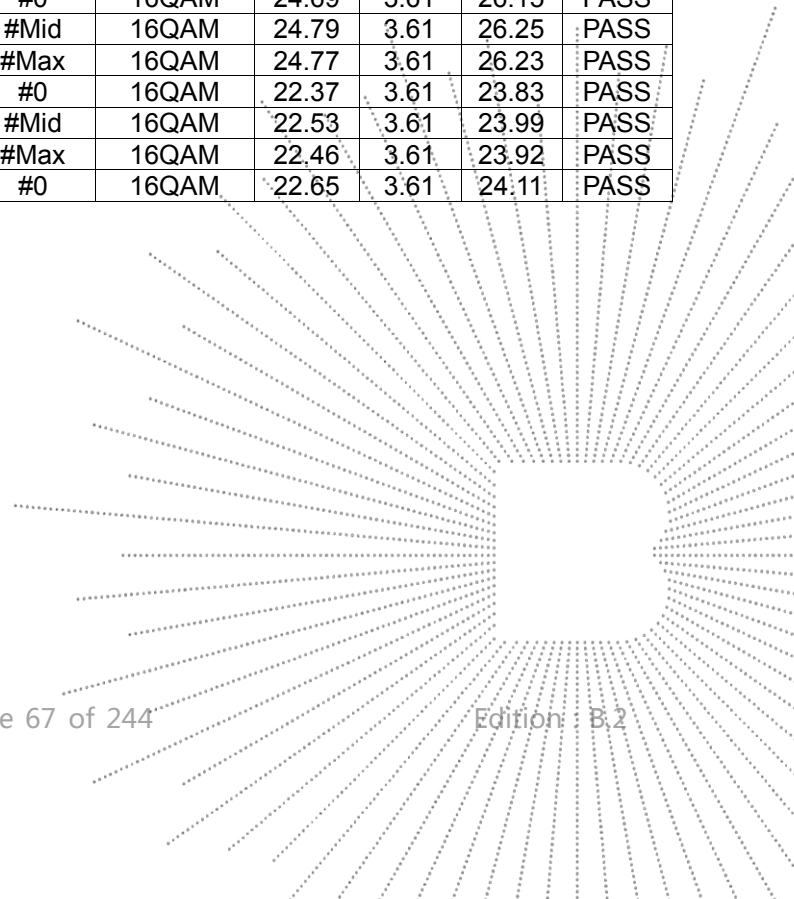
| Band | Bandwidth (MHz) | UL Channel | RB Size | RB Position | Modulation | Power (dBm) | Gain (dBm) | ERP (dBm) | Verdict |
|-----------------|-----------------|------------|---------|-------------|------------|-------------|------------|-----------|---------|
| Band26(824-849) | 1.4 | 26797 | 1 | #0 | QPSK | 24.30 | 3.61 | 25.76 | PASS |
| Band26(824-849) | 1.4 | 26797 | 1 | #Mid | QPSK | 24.31 | 3.61 | 25.77 | PASS |
| Band26(824-849) | 1.4 | 26797 | 1 | #Max | QPSK | 24.32 | 3.61 | 25.78 | PASS |
| Band26(824-849) | 1.4 | 26797 | 3 | #0 | QPSK | 23.72 | 3.61 | 25.18 | PASS |
| Band26(824-849) | 1.4 | 26797 | 3 | #Mid | QPSK | 23.66 | 3.61 | 25.12 | PASS |
| Band26(824-849) | 1.4 | 26797 | 3 | #Max | QPSK | 23.73 | 3.61 | 25.19 | PASS |
| Band26(824-849) | 1.4 | 26797 | 6 | #0 | QPSK | 21.83 | 3.61 | 23.29 | PASS |
| Band26(824-849) | 1.4 | 26797 | 1 | #0 | 16QAM | 24.68 | 3.61 | 26.14 | PASS |
| Band26(824-849) | 1.4 | 26797 | 1 | #Mid | 16QAM | 24.59 | 3.61 | 26.05 | PASS |
| Band26(824-849) | 1.4 | 26797 | 1 | #Max | 16QAM | 24.69 | 3.61 | 26.15 | PASS |
| Band26(824-849) | 1.4 | 26797 | 3 | #0 | 16QAM | 22.94 | 3.61 | 24.40 | PASS |
| Band26(824-849) | 1.4 | 26797 | 3 | #Mid | 16QAM | 23.04 | 3.61 | 24.50 | PASS |
| Band26(824-849) | 1.4 | 26797 | 3 | #Max | 16QAM | 23.07 | 3.61 | 24.53 | PASS |
| Band26(824-849) | 1.4 | 26797 | 6 | #0 | 16QAM | 21.99 | 3.61 | 23.45 | PASS |
| Band26(824-849) | 1.4 | 26915 | 1 | #0 | QPSK | 24.51 | 3.61 | 25.97 | PASS |
| Band26(824-849) | 1.4 | 26915 | 1 | #Mid | QPSK | 24.53 | 3.61 | 25.99 | PASS |
| Band26(824-849) | 1.4 | 26915 | 1 | #Max | QPSK | 24.57 | 3.61 | 26.03 | PASS |
| Band26(824-849) | 1.4 | 26915 | 3 | #0 | QPSK | 23.84 | 3.61 | 25.30 | PASS |
| Band26(824-849) | 1.4 | 26915 | 3 | #Mid | QPSK | 23.88 | 3.61 | 25.34 | PASS |
| Band26(824-849) | 1.4 | 26915 | 3 | #Max | QPSK | 23.93 | 3.61 | 25.39 | PASS |
| Band26(824-849) | 1.4 | 26915 | 6 | #0 | QPSK | 21.94 | 3.61 | 23.40 | PASS |
| Band26(824-849) | 1.4 | 26915 | 1 | #0 | 16QAM | 24.01 | 3.61 | 25.47 | PASS |
| Band26(824-849) | 1.4 | 26915 | 1 | #Mid | 16QAM | 24.03 | 3.61 | 25.49 | PASS |
| Band26(824-849) | 1.4 | 26915 | 1 | #Max | 16QAM | 24.09 | 3.61 | 25.55 | PASS |
| Band26(824-849) | 1.4 | 26915 | 3 | #0 | 16QAM | 22.98 | 3.61 | 24.44 | PASS |
| Band26(824-849) | 1.4 | 26915 | 3 | #Mid | 16QAM | 22.96 | 3.61 | 24.42 | PASS |
| Band26(824-849) | 1.4 | 26915 | 3 | #Max | 16QAM | 22.97 | 3.61 | 24.43 | PASS |
| Band26(824-849) | 1.4 | 26915 | 6 | #0 | 16QAM | 22.18 | 3.61 | 23.64 | PASS |
| Band26(824-849) | 1.4 | 27033 | 1 | #0 | QPSK | 24.70 | 3.61 | 26.16 | PASS |
| Band26(824-849) | 1.4 | 27033 | 1 | #Mid | QPSK | 24.57 | 3.61 | 26.03 | PASS |
| Band26(824-849) | 1.4 | 27033 | 1 | #Max | QPSK | 24.59 | 3.61 | 26.05 | PASS |
| Band26(824-849) | 1.4 | 27033 | 3 | #0 | QPSK | 23.97 | 3.61 | 25.43 | PASS |
| Band26(824-849) | 1.4 | 27033 | 3 | #Mid | QPSK | 23.96 | 3.61 | 25.42 | PASS |
| Band26(824-849) | 1.4 | 27033 | 3 | #Max | QPSK | 23.99 | 3.61 | 25.45 | PASS |
| Band26(824-849) | 1.4 | 27033 | 6 | #0 | QPSK | 21.93 | 3.61 | 23.39 | PASS |
| Band26(824-849) | 1.4 | 27033 | 1 | #0 | 16QAM | 24.15 | 3.61 | 25.61 | PASS |
| Band26(824-849) | 1.4 | 27033 | 1 | #Mid | 16QAM | 24.06 | 3.61 | 25.52 | PASS |
| Band26(824-849) | 1.4 | 27033 | 1 | #Max | 16QAM | 24.05 | 3.61 | 25.51 | PASS |
| Band26(824-849) | 1.4 | 27033 | 3 | #0 | 16QAM | 22.96 | 3.61 | 24.42 | PASS |
| Band26(824-849) | 1.4 | 27033 | 3 | #Mid | 16QAM | 22.82 | 3.61 | 24.28 | PASS |
| Band26(824-849) | 1.4 | 27033 | 3 | #Max | 16QAM | 22.82 | 3.61 | 24.28 | PASS |
| Band26(824-849) | 1.4 | 27033 | 6 | #0 | 16QAM | 21.99 | 3.61 | 23.45 | PASS |
| Band26(824-849) | 3 | 26805 | 1 | #0 | QPSK | 24.08 | 3.61 | 25.54 | PASS |
| Band26(824-849) | 3 | 26805 | 1 | #Mid | QPSK | 24.13 | 3.61 | 25.59 | PASS |
| Band26(824-849) | 3 | 26805 | 1 | #Max | QPSK | 24.15 | 3.61 | 25.61 | PASS |
| Band26(824-849) | 3 | 26805 | 8 | #0 | QPSK | 21.86 | 3.61 | 23.32 | PASS |
| Band26(824-849) | 3 | 26805 | 8 | #Mid | QPSK | 21.89 | 3.61 | 23.35 | PASS |
| Band26(824-849) | 3 | 26805 | 8 | #Max | QPSK | 21.71 | 3.61 | 23.17 | PASS |
| Band26(824-849) | 3 | 26805 | 15 | #0 | QPSK | 21.83 | 3.61 | 23.29 | PASS |
| Band26(824-849) | 3 | 26805 | 1 | #0 | 16QAM | 24.71 | 3.61 | 26.17 | PASS |
| Band26(824-849) | 3 | 26805 | 1 | #Mid | 16QAM | 24.71 | 3.61 | 26.17 | PASS |
| Band26(824-849) | 3 | 26805 | 1 | #Max | 16QAM | 24.64 | 3.61 | 26.10 | PASS |
| Band26(824-849) | 3 | 26805 | 8 | #0 | 16QAM | 21.71 | 3.61 | 23.17 | PASS |
| Band26(824-849) | 3 | 26805 | 8 | #Mid | 16QAM | 21.74 | 3.61 | 23.20 | PASS |

| | | | | | | | | | |
|-----------------|---|-------|----|------|-------|-------|------|-------|------|
| Band26(824-849) | 3 | 26805 | 8 | #Max | 16QAM | 21.60 | 3.61 | 23.06 | PASS |
| Band26(824-849) | 3 | 26805 | 15 | #0 | 16QAM | 21.93 | 3.61 | 23.39 | PASS |
| Band26(824-849) | 3 | 26915 | 1 | #0 | QPSK | 24.50 | 3.61 | 25.96 | PASS |
| Band26(824-849) | 3 | 26915 | 1 | #Mid | QPSK | 24.61 | 3.61 | 26.07 | PASS |
| Band26(824-849) | 3 | 26915 | 1 | #Max | QPSK | 24.52 | 3.61 | 25.98 | PASS |
| Band26(824-849) | 3 | 26915 | 8 | #0 | QPSK | 21.95 | 3.61 | 23.41 | PASS |
| Band26(824-849) | 3 | 26915 | 8 | #Mid | QPSK | 21.98 | 3.61 | 23.44 | PASS |
| Band26(824-849) | 3 | 26915 | 8 | #Max | QPSK | 21.98 | 3.61 | 23.44 | PASS |
| Band26(824-849) | 3 | 26915 | 15 | #0 | QPSK | 21.99 | 3.61 | 23.45 | PASS |
| Band26(824-849) | 3 | 26915 | 1 | #0 | 16QAM | 24.01 | 3.61 | 25.47 | PASS |
| Band26(824-849) | 3 | 26915 | 1 | #Mid | 16QAM | 24.00 | 3.61 | 25.46 | PASS |
| Band26(824-849) | 3 | 26915 | 1 | #Max | 16QAM | 23.97 | 3.61 | 25.43 | PASS |
| Band26(824-849) | 3 | 26915 | 8 | #0 | 16QAM | 21.94 | 3.61 | 23.40 | PASS |
| Band26(824-849) | 3 | 26915 | 8 | #Mid | 16QAM | 22.01 | 3.61 | 23.47 | PASS |
| Band26(824-849) | 3 | 26915 | 8 | #Max | 16QAM | 22.07 | 3.61 | 23.53 | PASS |
| Band26(824-849) | 3 | 26915 | 15 | #0 | 16QAM | 21.94 | 3.61 | 23.40 | PASS |
| Band26(824-849) | 3 | 27025 | 1 | #0 | QPSK | 24.58 | 3.61 | 26.04 | PASS |
| Band26(824-849) | 3 | 27025 | 1 | #Mid | QPSK | 24.60 | 3.61 | 26.06 | PASS |
| Band26(824-849) | 3 | 27025 | 1 | #Max | QPSK | 24.57 | 3.61 | 26.03 | PASS |
| Band26(824-849) | 3 | 27025 | 8 | #0 | QPSK | 21.99 | 3.61 | 23.45 | PASS |
| Band26(824-849) | 3 | 27025 | 8 | #Mid | QPSK | 21.96 | 3.61 | 23.42 | PASS |
| Band26(824-849) | 3 | 27025 | 8 | #Max | QPSK | 21.88 | 3.61 | 23.34 | PASS |
| Band26(824-849) | 3 | 27025 | 15 | #0 | QPSK | 21.93 | 3.61 | 23.39 | PASS |
| Band26(824-849) | 3 | 27025 | 1 | #0 | 16QAM | 24.12 | 3.61 | 25.58 | PASS |
| Band26(824-849) | 3 | 27025 | 1 | #Mid | 16QAM | 24.11 | 3.61 | 25.57 | PASS |
| Band26(824-849) | 3 | 27025 | 1 | #Max | 16QAM | 24.08 | 3.61 | 25.54 | PASS |
| Band26(824-849) | 3 | 27025 | 8 | #0 | 16QAM | 22.12 | 3.61 | 23.58 | PASS |
| Band26(824-849) | 3 | 27025 | 8 | #Mid | 16QAM | 22.07 | 3.61 | 23.53 | PASS |
| Band26(824-849) | 3 | 27025 | 8 | #Max | 16QAM | 21.97 | 3.61 | 23.43 | PASS |
| Band26(824-849) | 3 | 27025 | 15 | #0 | 16QAM | 22.08 | 3.61 | 23.54 | PASS |
| Band26(824-849) | 5 | 26815 | 1 | #0 | QPSK | 24.05 | 3.61 | 25.51 | PASS |
| Band26(824-849) | 5 | 26815 | 1 | #Mid | QPSK | 24.09 | 3.61 | 25.55 | PASS |
| Band26(824-849) | 5 | 26815 | 1 | #Max | QPSK | 24.15 | 3.61 | 25.61 | PASS |
| Band26(824-849) | 5 | 26815 | 12 | #0 | QPSK | 21.73 | 3.61 | 23.19 | PASS |
| Band26(824-849) | 5 | 26815 | 12 | #Mid | QPSK | 21.73 | 3.61 | 23.19 | PASS |
| Band26(824-849) | 5 | 26815 | 12 | #Max | QPSK | 21.77 | 3.61 | 23.23 | PASS |
| Band26(824-849) | 5 | 26815 | 25 | #0 | QPSK | 21.69 | 3.61 | 23.15 | PASS |
| Band26(824-849) | 5 | 26815 | 1 | #0 | 16QAM | 23.80 | 3.61 | 25.26 | PASS |
| Band26(824-849) | 5 | 26815 | 1 | #Mid | 16QAM | 23.80 | 3.61 | 25.26 | PASS |
| Band26(824-849) | 5 | 26815 | 1 | #Max | 16QAM | 23.88 | 3.61 | 25.34 | PASS |
| Band26(824-849) | 5 | 26815 | 12 | #0 | 16QAM | 21.73 | 3.61 | 23.19 | PASS |
| Band26(824-849) | 5 | 26815 | 12 | #Mid | 16QAM | 21.59 | 3.61 | 23.05 | PASS |
| Band26(824-849) | 5 | 26815 | 12 | #Max | 16QAM | 21.61 | 3.61 | 23.07 | PASS |
| Band26(824-849) | 5 | 26815 | 25 | #0 | 16QAM | 21.73 | 3.61 | 23.19 | PASS |
| Band26(824-849) | 5 | 26915 | 1 | #0 | QPSK | 24.40 | 3.61 | 25.86 | PASS |
| Band26(824-849) | 5 | 26915 | 1 | #Mid | QPSK | 24.37 | 3.61 | 25.83 | PASS |
| Band26(824-849) | 5 | 26915 | 1 | #Max | QPSK | 24.51 | 3.61 | 25.97 | PASS |
| Band26(824-849) | 5 | 26915 | 12 | #0 | QPSK | 21.83 | 3.61 | 23.29 | PASS |
| Band26(824-849) | 5 | 26915 | 12 | #Mid | QPSK | 21.87 | 3.61 | 23.33 | PASS |
| Band26(824-849) | 5 | 26915 | 12 | #Max | QPSK | 22.03 | 3.61 | 23.49 | PASS |
| Band26(824-849) | 5 | 26915 | 25 | #0 | QPSK | 21.90 | 3.61 | 23.36 | PASS |
| Band26(824-849) | 5 | 26915 | 1 | #0 | 16QAM | 23.95 | 3.61 | 25.41 | PASS |
| Band26(824-849) | 5 | 26915 | 1 | #Mid | 16QAM | 24.01 | 3.61 | 25.47 | PASS |
| Band26(824-849) | 5 | 26915 | 1 | #Max | 16QAM | 24.09 | 3.61 | 25.55 | PASS |
| Band26(824-849) | 5 | 26915 | 12 | #0 | 16QAM | 21.71 | 3.61 | 23.17 | PASS |
| Band26(824-849) | 5 | 26915 | 12 | #Mid | 16QAM | 21.77 | 3.61 | 23.23 | PASS |
| Band26(824-849) | 5 | 26915 | 12 | #Max | 16QAM | 21.75 | 3.61 | 23.21 | PASS |

| | | | | | | | | | |
|-----------------|----|-------|----|------|-------|-------|------|-------|------|
| Band26(824-849) | 5 | 26915 | 25 | #0 | 16QAM | 21.95 | 3.61 | 23.41 | PASS |
| Band26(824-849) | 5 | 27015 | 1 | #0 | QPSK | 24.27 | 3.61 | 25.73 | PASS |
| Band26(824-849) | 5 | 27015 | 1 | #Mid | QPSK | 24.26 | 3.61 | 25.72 | PASS |
| Band26(824-849) | 5 | 27015 | 1 | #Max | QPSK | 24.17 | 3.61 | 25.63 | PASS |
| Band26(824-849) | 5 | 27015 | 12 | #0 | QPSK | 21.87 | 3.61 | 23.33 | PASS |
| Band26(824-849) | 5 | 27015 | 12 | #Mid | QPSK | 21.93 | 3.61 | 23.39 | PASS |
| Band26(824-849) | 5 | 27015 | 12 | #Max | QPSK | 21.85 | 3.61 | 23.31 | PASS |
| Band26(824-849) | 5 | 27015 | 25 | #0 | QPSK | 21.97 | 3.61 | 23.43 | PASS |
| Band26(824-849) | 5 | 27015 | 1 | #0 | 16QAM | 24.43 | 3.61 | 25.89 | PASS |
| Band26(824-849) | 5 | 27015 | 1 | #Mid | 16QAM | 24.56 | 3.61 | 26.02 | PASS |
| Band26(824-849) | 5 | 27015 | 1 | #Max | 16QAM | 24.42 | 3.61 | 25.88 | PASS |
| Band26(824-849) | 5 | 27015 | 12 | #0 | 16QAM | 21.89 | 3.61 | 23.35 | PASS |
| Band26(824-849) | 5 | 27015 | 12 | #Mid | 16QAM | 21.95 | 3.61 | 23.41 | PASS |
| Band26(824-849) | 5 | 27015 | 12 | #Max | 16QAM | 21.89 | 3.61 | 23.35 | PASS |
| Band26(824-849) | 5 | 27015 | 25 | #0 | 16QAM | 22.08 | 3.61 | 23.54 | PASS |
| Band26(824-849) | 10 | 26840 | 1 | #0 | QPSK | 24.10 | 3.61 | 25.56 | PASS |
| Band26(824-849) | 10 | 26840 | 1 | #Mid | QPSK | 24.23 | 3.61 | 25.69 | PASS |
| Band26(824-849) | 10 | 26840 | 1 | #Max | QPSK | 24.42 | 3.61 | 25.88 | PASS |
| Band26(824-849) | 10 | 26840 | 25 | #0 | QPSK | 22.23 | 3.61 | 23.69 | PASS |
| Band26(824-849) | 10 | 26840 | 25 | #Mid | QPSK | 22.24 | 3.61 | 23.70 | PASS |
| Band26(824-849) | 10 | 26840 | 25 | #Max | QPSK | 22.32 | 3.61 | 23.78 | PASS |
| Band26(824-849) | 10 | 26840 | 50 | #0 | QPSK | 22.32 | 3.61 | 23.78 | PASS |
| Band26(824-849) | 10 | 26840 | 1 | #0 | 16QAM | 24.77 | 3.61 | 26.23 | PASS |
| Band26(824-849) | 10 | 26840 | 1 | #Mid | 16QAM | 24.73 | 3.61 | 26.19 | PASS |
| Band26(824-849) | 10 | 26840 | 1 | #Max | 16QAM | 24.96 | 3.61 | 26.42 | PASS |
| Band26(824-849) | 10 | 26840 | 25 | #0 | 16QAM | 22.08 | 3.61 | 23.54 | PASS |
| Band26(824-849) | 10 | 26840 | 25 | #Mid | 16QAM | 22.23 | 3.61 | 23.69 | PASS |
| Band26(824-849) | 10 | 26840 | 25 | #Max | 16QAM | 22.32 | 3.61 | 23.78 | PASS |
| Band26(824-849) | 10 | 26840 | 50 | #0 | 16QAM | 22.41 | 3.61 | 23.87 | PASS |
| Band26(824-849) | 10 | 26915 | 1 | #0 | QPSK | 24.21 | 3.61 | 25.67 | PASS |
| Band26(824-849) | 10 | 26915 | 1 | #Mid | QPSK | 24.31 | 3.61 | 25.77 | PASS |
| Band26(824-849) | 10 | 26915 | 1 | #Max | QPSK | 24.45 | 3.61 | 25.91 | PASS |
| Band26(824-849) | 10 | 26915 | 25 | #0 | QPSK | 22.39 | 3.61 | 23.85 | PASS |
| Band26(824-849) | 10 | 26915 | 25 | #Mid | QPSK | 22.43 | 3.61 | 23.89 | PASS |
| Band26(824-849) | 10 | 26915 | 25 | #Max | QPSK | 22.34 | 3.61 | 23.80 | PASS |
| Band26(824-849) | 10 | 26915 | 50 | #0 | QPSK | 22.36 | 3.61 | 23.82 | PASS |
| Band26(824-849) | 10 | 26915 | 1 | #0 | 16QAM | 24.38 | 3.61 | 25.84 | PASS |
| Band26(824-849) | 10 | 26915 | 1 | #Mid | 16QAM | 24.57 | 3.61 | 26.03 | PASS |
| Band26(824-849) | 10 | 26915 | 1 | #Max | 16QAM | 24.62 | 3.61 | 26.08 | PASS |
| Band26(824-849) | 10 | 26915 | 25 | #0 | 16QAM | 22.38 | 3.61 | 23.84 | PASS |
| Band26(824-849) | 10 | 26915 | 25 | #Mid | 16QAM | 22.40 | 3.61 | 23.86 | PASS |
| Band26(824-849) | 10 | 26915 | 25 | #Max | 16QAM | 22.49 | 3.61 | 23.95 | PASS |
| Band26(824-849) | 10 | 26915 | 50 | #0 | 16QAM | 22.57 | 3.61 | 24.03 | PASS |
| Band26(824-849) | 10 | 26990 | 1 | #0 | QPSK | 24.46 | 3.61 | 25.92 | PASS |
| Band26(824-849) | 10 | 26990 | 1 | #Mid | QPSK | 24.45 | 3.61 | 25.91 | PASS |
| Band26(824-849) | 10 | 26990 | 1 | #Max | QPSK | 24.49 | 3.61 | 25.95 | PASS |
| Band26(824-849) | 10 | 26990 | 25 | #0 | QPSK | 22.55 | 3.61 | 24.01 | PASS |
| Band26(824-849) | 10 | 26990 | 25 | #Mid | QPSK | 22.57 | 3.61 | 24.03 | PASS |
| Band26(824-849) | 10 | 26990 | 25 | #Max | QPSK | 22.57 | 3.61 | 24.03 | PASS |
| Band26(824-849) | 10 | 26990 | 50 | #0 | QPSK | 22.53 | 3.61 | 23.99 | PASS |
| Band26(824-849) | 10 | 26990 | 1 | #0 | 16QAM | 24.26 | 3.61 | 25.72 | PASS |
| Band26(824-849) | 10 | 26990 | 1 | #Mid | 16QAM | 24.16 | 3.61 | 25.62 | PASS |
| Band26(824-849) | 10 | 26990 | 1 | #Max | 16QAM | 24.14 | 3.61 | 25.60 | PASS |
| Band26(824-849) | 10 | 26990 | 25 | #0 | 16QAM | 22.61 | 3.61 | 24.07 | PASS |
| Band26(824-849) | 10 | 26990 | 25 | #Mid | 16QAM | 22.59 | 3.61 | 24.05 | PASS |
| Band26(824-849) | 10 | 26990 | 25 | #Max | 16QAM | 22.55 | 3.61 | 24.01 | PASS |
| Band26(824-849) | 10 | 26990 | 50 | #0 | 16QAM | 22.49 | 3.61 | 23.95 | PASS |

| | | | | | | | | | |
|-----------------|----|-------|----|------|-------|-------|------|-------|------|
| Band26(824-849) | 15 | 26865 | 1 | #0 | QPSK | 24.10 | 3.61 | 25.56 | PASS |
| Band26(824-849) | 15 | 26865 | 1 | #Mid | QPSK | 24.20 | 3.61 | 25.66 | PASS |
| Band26(824-849) | 15 | 26865 | 1 | #Max | QPSK | 24.51 | 3.61 | 25.97 | PASS |
| Band26(824-849) | 15 | 26865 | 36 | #0 | QPSK | 22.18 | 3.61 | 23.64 | PASS |
| Band26(824-849) | 15 | 26865 | 36 | #Mid | QPSK | 22.24 | 3.61 | 23.70 | PASS |
| Band26(824-849) | 15 | 26865 | 36 | #Max | QPSK | 22.40 | 3.61 | 23.86 | PASS |
| Band26(824-849) | 15 | 26865 | 75 | #0 | QPSK | 22.30 | 3.61 | 23.76 | PASS |
| Band26(824-849) | 15 | 26865 | 1 | #0 | 16QAM | 24.74 | 3.61 | 26.20 | PASS |
| Band26(824-849) | 15 | 26865 | 1 | #Mid | 16QAM | 24.82 | 3.61 | 26.28 | PASS |
| Band26(824-849) | 15 | 26865 | 1 | #Max | 16QAM | 25.08 | 3.61 | 26.54 | PASS |
| Band26(824-849) | 15 | 26865 | 36 | #0 | 16QAM | 22.17 | 3.61 | 23.63 | PASS |
| Band26(824-849) | 15 | 26865 | 36 | #Mid | 16QAM | 22.23 | 3.61 | 23.69 | PASS |
| Band26(824-849) | 15 | 26865 | 36 | #Max | 16QAM | 22.36 | 3.61 | 23.82 | PASS |
| Band26(824-849) | 15 | 26865 | 75 | #0 | 16QAM | 22.30 | 3.61 | 23.76 | PASS |
| Band26(824-849) | 15 | 26915 | 1 | #0 | QPSK | 24.15 | 3.61 | 25.61 | PASS |
| Band26(824-849) | 15 | 26915 | 1 | #Mid | QPSK | 24.34 | 3.61 | 25.80 | PASS |
| Band26(824-849) | 15 | 26915 | 1 | #Max | QPSK | 24.35 | 3.61 | 25.81 | PASS |
| Band26(824-849) | 15 | 26915 | 36 | #0 | QPSK | 22.30 | 3.61 | 23.76 | PASS |
| Band26(824-849) | 15 | 26915 | 36 | #Mid | QPSK | 22.44 | 3.61 | 23.90 | PASS |
| Band26(824-849) | 15 | 26915 | 36 | #Max | QPSK | 22.53 | 3.61 | 23.99 | PASS |
| Band26(824-849) | 15 | 26915 | 75 | #0 | QPSK | 22.34 | 3.61 | 23.80 | PASS |
| Band26(824-849) | 15 | 26915 | 1 | #0 | 16QAM | 24.34 | 3.61 | 25.80 | PASS |
| Band26(824-849) | 15 | 26915 | 1 | #Mid | 16QAM | 24.69 | 3.61 | 26.15 | PASS |
| Band26(824-849) | 15 | 26915 | 1 | #Max | 16QAM | 24.54 | 3.61 | 26.00 | PASS |
| Band26(824-849) | 15 | 26915 | 36 | #0 | 16QAM | 22.39 | 3.61 | 23.85 | PASS |
| Band26(824-849) | 15 | 26915 | 36 | #Mid | 16QAM | 22.53 | 3.61 | 23.99 | PASS |
| Band26(824-849) | 15 | 26915 | 36 | #Max | 16QAM | 22.67 | 3.61 | 24.13 | PASS |
| Band26(824-849) | 15 | 26915 | 75 | #0 | 16QAM | 22.39 | 3.61 | 23.85 | PASS |
| Band26(824-849) | 15 | 26965 | 1 | #0 | QPSK | 24.36 | 3.61 | 25.82 | PASS |
| Band26(824-849) | 15 | 26965 | 1 | #Mid | QPSK | 24.49 | 3.61 | 25.95 | PASS |
| Band26(824-849) | 15 | 26965 | 1 | #Max | QPSK | 24.41 | 3.61 | 25.87 | PASS |
| Band26(824-849) | 15 | 26965 | 36 | #0 | QPSK | 22.39 | 3.61 | 23.85 | PASS |
| Band26(824-849) | 15 | 26965 | 36 | #Mid | QPSK | 22.55 | 3.61 | 24.01 | PASS |
| Band26(824-849) | 15 | 26965 | 36 | #Max | QPSK | 22.41 | 3.61 | 23.87 | PASS |
| Band26(824-849) | 15 | 26965 | 75 | #0 | QPSK | 22.55 | 3.61 | 24.01 | PASS |
| Band26(824-849) | 15 | 26965 | 1 | #0 | 16QAM | 24.69 | 3.61 | 26.15 | PASS |
| Band26(824-849) | 15 | 26965 | 1 | #Mid | 16QAM | 24.79 | 3.61 | 26.25 | PASS |
| Band26(824-849) | 15 | 26965 | 1 | #Max | 16QAM | 24.77 | 3.61 | 26.23 | PASS |
| Band26(824-849) | 15 | 26965 | 36 | #0 | 16QAM | 22.37 | 3.61 | 23.83 | PASS |
| Band26(824-849) | 15 | 26965 | 36 | #Mid | 16QAM | 22.53 | 3.61 | 23.99 | PASS |
| Band26(824-849) | 15 | 26965 | 36 | #Max | 16QAM | 22.46 | 3.61 | 23.92 | PASS |
| Band26(824-849) | 15 | 26965 | 75 | #0 | 16QAM | 22.65 | 3.61 | 24.11 | PASS |

STING
 ED
 IN



| Band | Bandwidth (MHz) | UL Channel | RB Size | RB Position | Modulation | Power (dBm) | Gain (dBm) | EIRP (dBm) | Verdict |
|--------|-----------------|------------|---------|-------------|------------|-------------|------------|------------|---------|
| Band66 | 1.4 | 131979 | 1 | #0 | QPSK | 25.41 | 0.97 | 26.38 | PASS |
| Band66 | 1.4 | 131979 | 1 | #Mid | QPSK | 25.43 | 0.97 | 26.40 | PASS |
| Band66 | 1.4 | 131979 | 1 | #Max | QPSK | 25.38 | 0.97 | 26.35 | PASS |
| Band66 | 1.4 | 131979 | 3 | #0 | QPSK | 25.24 | 0.97 | 26.21 | PASS |
| Band66 | 1.4 | 131979 | 3 | #Mid | QPSK | 25.29 | 0.97 | 26.26 | PASS |
| Band66 | 1.4 | 131979 | 3 | #Max | QPSK | 25.23 | 0.97 | 26.20 | PASS |
| Band66 | 1.4 | 131979 | 6 | #0 | QPSK | 24.46 | 0.97 | 25.43 | PASS |
| Band66 | 1.4 | 131979 | 1 | #0 | 16QAM | 25.32 | 0.97 | 26.29 | PASS |
| Band66 | 1.4 | 131979 | 1 | #Mid | 16QAM | 25.32 | 0.97 | 26.29 | PASS |
| Band66 | 1.4 | 131979 | 1 | #Max | 16QAM | 25.24 | 0.97 | 26.21 | PASS |
| Band66 | 1.4 | 131979 | 3 | #0 | 16QAM | 24.66 | 0.97 | 25.63 | PASS |
| Band66 | 1.4 | 131979 | 3 | #Mid | 16QAM | 24.64 | 0.97 | 25.61 | PASS |
| Band66 | 1.4 | 131979 | 3 | #Max | 16QAM | 24.57 | 0.97 | 25.54 | PASS |
| Band66 | 1.4 | 131979 | 6 | #0 | 16QAM | 23.61 | 0.97 | 24.58 | PASS |
| Band66 | 1.4 | 132322 | 1 | #0 | QPSK | 25.34 | 0.97 | 26.31 | PASS |
| Band66 | 1.4 | 132322 | 1 | #Mid | QPSK | 25.37 | 0.97 | 26.34 | PASS |
| Band66 | 1.4 | 132322 | 1 | #Max | QPSK | 25.33 | 0.97 | 26.30 | PASS |
| Band66 | 1.4 | 132322 | 3 | #0 | QPSK | 25.44 | 0.97 | 26.41 | PASS |
| Band66 | 1.4 | 132322 | 3 | #Mid | QPSK | 25.49 | 0.97 | 26.46 | PASS |
| Band66 | 1.4 | 132322 | 3 | #Max | QPSK | 25.43 | 0.97 | 26.40 | PASS |
| Band66 | 1.4 | 132322 | 6 | #0 | QPSK | 24.40 | 0.97 | 25.37 | PASS |
| Band66 | 1.4 | 132322 | 1 | #0 | 16QAM | 25.07 | 0.97 | 26.04 | PASS |
| Band66 | 1.4 | 132322 | 1 | #Mid | 16QAM | 25.04 | 0.97 | 26.01 | PASS |
| Band66 | 1.4 | 132322 | 1 | #Max | 16QAM | 25.01 | 0.97 | 25.98 | PASS |
| Band66 | 1.4 | 132322 | 3 | #0 | 16QAM | 24.86 | 0.97 | 25.83 | PASS |
| Band66 | 1.4 | 132322 | 3 | #Mid | 16QAM | 24.81 | 0.97 | 25.78 | PASS |
| Band66 | 1.4 | 132322 | 3 | #Max | 16QAM | 24.77 | 0.97 | 25.74 | PASS |
| Band66 | 1.4 | 132322 | 6 | #0 | 16QAM | 23.38 | 0.97 | 24.35 | PASS |
| Band66 | 1.4 | 132665 | 1 | #0 | QPSK | 24.63 | 0.97 | 25.60 | PASS |
| Band66 | 1.4 | 132665 | 1 | #Mid | QPSK | 24.71 | 0.97 | 25.68 | PASS |
| Band66 | 1.4 | 132665 | 1 | #Max | QPSK | 24.63 | 0.97 | 25.60 | PASS |
| Band66 | 1.4 | 132665 | 3 | #0 | QPSK | 24.56 | 0.97 | 25.53 | PASS |
| Band66 | 1.4 | 132665 | 3 | #Mid | QPSK | 24.59 | 0.97 | 25.56 | PASS |
| Band66 | 1.4 | 132665 | 3 | #Max | QPSK | 24.57 | 0.97 | 25.54 | PASS |
| Band66 | 1.4 | 132665 | 6 | #0 | QPSK | 24.32 | 0.97 | 25.29 | PASS |
| Band66 | 1.4 | 132665 | 1 | #0 | 16QAM | 23.85 | 0.97 | 24.82 | PASS |
| Band66 | 1.4 | 132665 | 1 | #Mid | 16QAM | 23.98 | 0.97 | 24.95 | PASS |
| Band66 | 1.4 | 132665 | 1 | #Max | 16QAM | 23.88 | 0.97 | 24.85 | PASS |
| Band66 | 1.4 | 132665 | 3 | #0 | 16QAM | 24.24 | 0.97 | 25.21 | PASS |
| Band66 | 1.4 | 132665 | 3 | #Mid | 16QAM | 24.28 | 0.97 | 25.25 | PASS |
| Band66 | 1.4 | 132665 | 3 | #Max | 16QAM | 24.25 | 0.97 | 25.22 | PASS |
| Band66 | 1.4 | 132665 | 6 | #0 | 16QAM | 23.57 | 0.97 | 24.54 | PASS |
| Band66 | 3 | 131987 | 1 | #0 | QPSK | 25.26 | 0.97 | 26.23 | PASS |
| Band66 | 3 | 131987 | 1 | #Mid | QPSK | 25.31 | 0.97 | 26.28 | PASS |
| Band66 | 3 | 131987 | 1 | #Max | QPSK | 25.26 | 0.97 | 26.23 | PASS |
| Band66 | 3 | 131987 | 8 | #0 | QPSK | 24.33 | 0.97 | 25.30 | PASS |
| Band66 | 3 | 131987 | 8 | #Mid | QPSK | 24.36 | 0.97 | 25.33 | PASS |
| Band66 | 3 | 131987 | 8 | #Max | QPSK | 24.32 | 0.97 | 25.29 | PASS |
| Band66 | 3 | 131987 | 15 | #0 | QPSK | 24.33 | 0.97 | 25.30 | PASS |
| Band66 | 3 | 131987 | 1 | #0 | 16QAM | 25.42 | 0.97 | 26.39 | PASS |
| Band66 | 3 | 131987 | 1 | #Mid | 16QAM | 25.36 | 0.97 | 26.33 | PASS |
| Band66 | 3 | 131987 | 1 | #Max | 16QAM | 25.32 | 0.97 | 26.29 | PASS |
| Band66 | 3 | 131987 | 8 | #0 | 16QAM | 23.39 | 0.97 | 24.36 | PASS |
| Band66 | 3 | 131987 | 8 | #Mid | 16QAM | 23.44 | 0.97 | 24.41 | PASS |

CO.LTD

| | | | | | | | | | |
|--------|---|--------|----|------|-------|-------|------|-------|------|
| Band66 | 3 | 131987 | 8 | #Max | 16QAM | 23.36 | 0.97 | 24.33 | PASS |
| Band66 | 3 | 131987 | 15 | #0 | 16QAM | 23.53 | 0.97 | 24.50 | PASS |
| Band66 | 3 | 132322 | 1 | #0 | QPSK | 25.33 | 0.97 | 26.30 | PASS |
| Band66 | 3 | 132322 | 1 | #Mid | QPSK | 25.38 | 0.97 | 26.35 | PASS |
| Band66 | 3 | 132322 | 1 | #Max | QPSK | 25.31 | 0.97 | 26.28 | PASS |
| Band66 | 3 | 132322 | 8 | #0 | QPSK | 24.44 | 0.97 | 25.41 | PASS |
| Band66 | 3 | 132322 | 8 | #Mid | QPSK | 24.41 | 0.97 | 25.38 | PASS |
| Band66 | 3 | 132322 | 8 | #Max | QPSK | 24.40 | 0.97 | 25.37 | PASS |
| Band66 | 3 | 132322 | 15 | #0 | QPSK | 24.39 | 0.97 | 25.36 | PASS |
| Band66 | 3 | 132322 | 1 | #0 | 16QAM | 24.50 | 0.97 | 25.47 | PASS |
| Band66 | 3 | 132322 | 1 | #Mid | 16QAM | 24.49 | 0.97 | 25.46 | PASS |
| Band66 | 3 | 132322 | 1 | #Max | 16QAM | 24.42 | 0.97 | 25.39 | PASS |
| Band66 | 3 | 132322 | 8 | #0 | 16QAM | 23.57 | 0.97 | 24.54 | PASS |
| Band66 | 3 | 132322 | 8 | #Mid | 16QAM | 23.63 | 0.97 | 24.60 | PASS |
| Band66 | 3 | 132322 | 8 | #Max | 16QAM | 23.61 | 0.97 | 24.58 | PASS |
| Band66 | 3 | 132322 | 15 | #0 | 16QAM | 23.56 | 0.97 | 24.53 | PASS |
| Band66 | 3 | 132657 | 1 | #0 | QPSK | 24.46 | 0.97 | 25.43 | PASS |
| Band66 | 3 | 132657 | 1 | #Mid | QPSK | 24.64 | 0.97 | 25.61 | PASS |
| Band66 | 3 | 132657 | 1 | #Max | QPSK | 24.60 | 0.97 | 25.57 | PASS |
| Band66 | 3 | 132657 | 8 | #0 | QPSK | 24.21 | 0.97 | 25.18 | PASS |
| Band66 | 3 | 132657 | 8 | #Mid | QPSK | 24.29 | 0.97 | 25.26 | PASS |
| Band66 | 3 | 132657 | 8 | #Max | QPSK | 24.36 | 0.97 | 25.33 | PASS |
| Band66 | 3 | 132657 | 15 | #0 | QPSK | 24.35 | 0.97 | 25.32 | PASS |
| Band66 | 3 | 132657 | 1 | #0 | 16QAM | 23.76 | 0.97 | 24.73 | PASS |
| Band66 | 3 | 132657 | 1 | #Mid | 16QAM | 23.96 | 0.97 | 24.93 | PASS |
| Band66 | 3 | 132657 | 1 | #Max | 16QAM | 23.94 | 0.97 | 24.91 | PASS |
| Band66 | 3 | 132657 | 8 | #0 | 16QAM | 23.39 | 0.97 | 24.36 | PASS |
| Band66 | 3 | 132657 | 8 | #Mid | 16QAM | 23.45 | 0.97 | 24.42 | PASS |
| Band66 | 3 | 132657 | 8 | #Max | 16QAM | 23.40 | 0.97 | 24.37 | PASS |
| Band66 | 3 | 132657 | 15 | #0 | 16QAM | 23.55 | 0.97 | 24.52 | PASS |
| Band66 | 5 | 131997 | 1 | #0 | QPSK | 25.32 | 0.97 | 26.29 | PASS |
| Band66 | 5 | 131997 | 1 | #Mid | QPSK | 25.25 | 0.97 | 26.22 | PASS |
| Band66 | 5 | 131997 | 1 | #Max | QPSK | 25.17 | 0.97 | 26.14 | PASS |
| Band66 | 5 | 131997 | 12 | #0 | QPSK | 24.41 | 0.97 | 25.38 | PASS |
| Band66 | 5 | 131997 | 12 | #Mid | QPSK | 24.35 | 0.97 | 25.32 | PASS |
| Band66 | 5 | 131997 | 12 | #Max | QPSK | 24.36 | 0.97 | 25.33 | PASS |
| Band66 | 5 | 131997 | 25 | #0 | QPSK | 24.40 | 0.97 | 25.37 | PASS |
| Band66 | 5 | 131997 | 1 | #0 | 16QAM | 24.59 | 0.97 | 25.56 | PASS |
| Band66 | 5 | 131997 | 1 | #Mid | 16QAM | 24.53 | 0.97 | 25.50 | PASS |
| Band66 | 5 | 131997 | 1 | #Max | 16QAM | 24.48 | 0.97 | 25.45 | PASS |
| Band66 | 5 | 131997 | 12 | #0 | 16QAM | 23.37 | 0.97 | 24.34 | PASS |
| Band66 | 5 | 131997 | 12 | #Mid | 16QAM | 23.29 | 0.97 | 24.26 | PASS |
| Band66 | 5 | 131997 | 12 | #Max | 16QAM | 23.25 | 0.97 | 24.22 | PASS |
| Band66 | 5 | 131997 | 25 | #0 | 16QAM | 23.46 | 0.97 | 24.43 | PASS |
| Band66 | 5 | 132322 | 1 | #0 | QPSK | 25.52 | 0.97 | 26.49 | PASS |
| Band66 | 5 | 132322 | 1 | #Mid | QPSK | 25.45 | 0.97 | 26.42 | PASS |
| Band66 | 5 | 132322 | 1 | #Max | QPSK | 25.43 | 0.97 | 26.40 | PASS |
| Band66 | 5 | 132322 | 12 | #0 | QPSK | 24.49 | 0.97 | 25.46 | PASS |
| Band66 | 5 | 132322 | 12 | #Mid | QPSK | 24.41 | 0.97 | 25.38 | PASS |
| Band66 | 5 | 132322 | 12 | #Max | QPSK | 24.41 | 0.97 | 25.38 | PASS |
| Band66 | 5 | 132322 | 25 | #0 | QPSK | 24.39 | 0.97 | 25.36 | PASS |
| Band66 | 5 | 132322 | 1 | #0 | 16QAM | 24.48 | 0.97 | 25.45 | PASS |
| Band66 | 5 | 132322 | 1 | #Mid | 16QAM | 24.48 | 0.97 | 25.45 | PASS |
| Band66 | 5 | 132322 | 1 | #Max | 16QAM | 24.41 | 0.97 | 25.38 | PASS |
| Band66 | 5 | 132322 | 12 | #0 | 16QAM | 23.23 | 0.97 | 24.20 | PASS |
| Band66 | 5 | 132322 | 12 | #Mid | 16QAM | 23.28 | 0.97 | 24.25 | PASS |
| Band66 | 5 | 132322 | 12 | #Max | 16QAM | 23.22 | 0.97 | 24.19 | PASS |

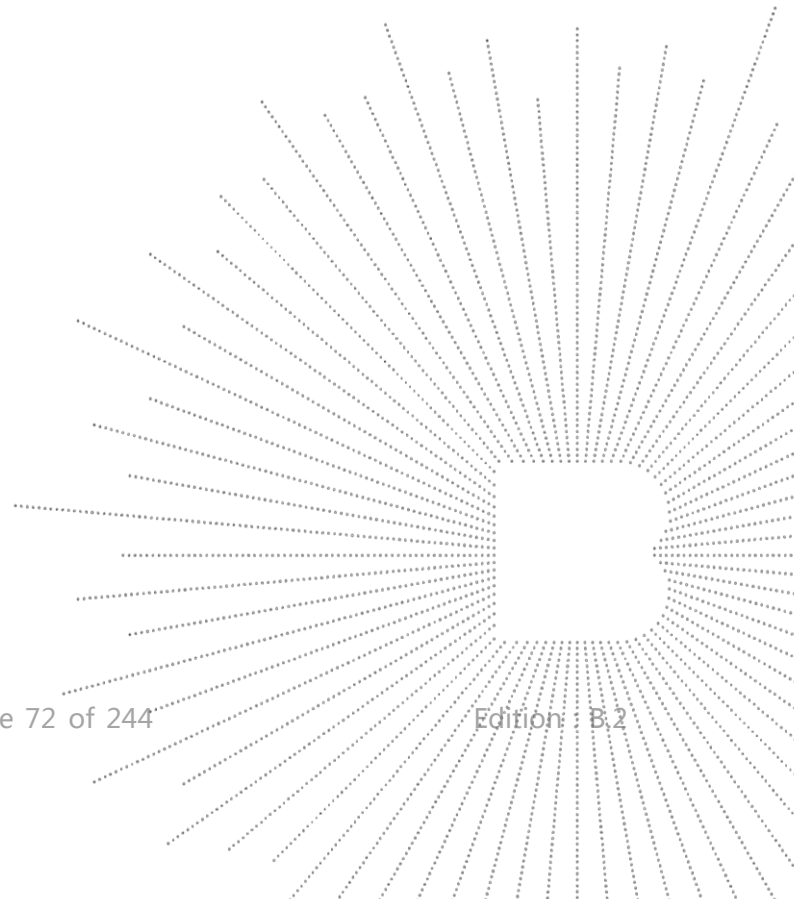
CHENZHEN

| | | | | | | | | | |
|--------|----|--------|----|------|-------|-------|------|-------|------|
| Band66 | 5 | 132322 | 25 | #0 | 16QAM | 23.48 | 0.97 | 24.45 | PASS |
| Band66 | 5 | 132647 | 1 | #0 | QPSK | 24.11 | 0.97 | 25.08 | PASS |
| Band66 | 5 | 132647 | 1 | #Mid | QPSK | 24.35 | 0.97 | 25.32 | PASS |
| Band66 | 5 | 132647 | 1 | #Max | QPSK | 24.21 | 0.97 | 25.18 | PASS |
| Band66 | 5 | 132647 | 12 | #0 | QPSK | 24.12 | 0.97 | 25.09 | PASS |
| Band66 | 5 | 132647 | 12 | #Mid | QPSK | 24.33 | 0.97 | 25.30 | PASS |
| Band66 | 5 | 132647 | 12 | #Max | QPSK | 24.31 | 0.97 | 25.28 | PASS |
| Band66 | 5 | 132647 | 25 | #0 | QPSK | 24.25 | 0.97 | 25.22 | PASS |
| Band66 | 5 | 132647 | 1 | #0 | 16QAM | 23.91 | 0.97 | 24.88 | PASS |
| Band66 | 5 | 132647 | 1 | #Mid | 16QAM | 24.20 | 0.97 | 25.17 | PASS |
| Band66 | 5 | 132647 | 1 | #Max | 16QAM | 24.10 | 0.97 | 25.07 | PASS |
| Band66 | 5 | 132647 | 12 | #0 | 16QAM | 23.42 | 0.97 | 24.39 | PASS |
| Band66 | 5 | 132647 | 12 | #Mid | 16QAM | 23.45 | 0.97 | 24.42 | PASS |
| Band66 | 5 | 132647 | 12 | #Max | 16QAM | 23.45 | 0.97 | 24.42 | PASS |
| Band66 | 5 | 132647 | 25 | #0 | 16QAM | 23.43 | 0.97 | 24.40 | PASS |
| Band66 | 10 | 132022 | 1 | #0 | QPSK | 25.18 | 0.97 | 26.15 | PASS |
| Band66 | 10 | 132022 | 1 | #Mid | QPSK | 25.16 | 0.97 | 26.13 | PASS |
| Band66 | 10 | 132022 | 1 | #Max | QPSK | 25.10 | 0.97 | 26.07 | PASS |
| Band66 | 10 | 132022 | 25 | #0 | QPSK | 24.32 | 0.97 | 25.29 | PASS |
| Band66 | 10 | 132022 | 25 | #Mid | QPSK | 24.32 | 0.97 | 25.29 | PASS |
| Band66 | 10 | 132022 | 25 | #Max | QPSK | 24.30 | 0.97 | 25.27 | PASS |
| Band66 | 10 | 132022 | 50 | #0 | QPSK | 24.29 | 0.97 | 25.26 | PASS |
| Band66 | 10 | 132022 | 1 | #0 | 16QAM | 25.33 | 0.97 | 26.30 | PASS |
| Band66 | 10 | 132022 | 1 | #Mid | 16QAM | 25.24 | 0.97 | 26.21 | PASS |
| Band66 | 10 | 132022 | 1 | #Max | 16QAM | 25.20 | 0.97 | 26.17 | PASS |
| Band66 | 10 | 132022 | 25 | #0 | 16QAM | 23.41 | 0.97 | 24.38 | PASS |
| Band66 | 10 | 132022 | 25 | #Mid | 16QAM | 23.40 | 0.97 | 24.37 | PASS |
| Band66 | 10 | 132022 | 25 | #Max | 16QAM | 23.33 | 0.97 | 24.30 | PASS |
| Band66 | 10 | 132022 | 50 | #0 | 16QAM | 23.33 | 0.97 | 24.30 | PASS |
| Band66 | 10 | 132322 | 1 | #0 | QPSK | 25.39 | 0.97 | 26.36 | PASS |
| Band66 | 10 | 132322 | 1 | #Mid | QPSK | 25.47 | 0.97 | 26.44 | PASS |
| Band66 | 10 | 132322 | 1 | #Max | QPSK | 25.41 | 0.97 | 26.38 | PASS |
| Band66 | 10 | 132322 | 25 | #0 | QPSK | 24.48 | 0.97 | 25.45 | PASS |
| Band66 | 10 | 132322 | 25 | #Mid | QPSK | 24.43 | 0.97 | 25.40 | PASS |
| Band66 | 10 | 132322 | 25 | #Max | QPSK | 24.41 | 0.97 | 25.38 | PASS |
| Band66 | 10 | 132322 | 50 | #0 | QPSK | 24.43 | 0.97 | 25.40 | PASS |
| Band66 | 10 | 132322 | 1 | #0 | 16QAM | 25.05 | 0.97 | 26.02 | PASS |
| Band66 | 10 | 132322 | 1 | #Mid | 16QAM | 25.03 | 0.97 | 26.00 | PASS |
| Band66 | 10 | 132322 | 1 | #Max | 16QAM | 24.98 | 0.97 | 25.95 | PASS |
| Band66 | 10 | 132322 | 25 | #0 | 16QAM | 23.57 | 0.97 | 24.54 | PASS |
| Band66 | 10 | 132322 | 25 | #Mid | 16QAM | 23.53 | 0.97 | 24.50 | PASS |
| Band66 | 10 | 132322 | 25 | #Max | 16QAM | 23.47 | 0.97 | 24.44 | PASS |
| Band66 | 10 | 132322 | 50 | #0 | 16QAM | 23.54 | 0.97 | 24.51 | PASS |
| Band66 | 10 | 132622 | 1 | #0 | QPSK | 24.50 | 0.97 | 25.47 | PASS |
| Band66 | 10 | 132622 | 1 | #Mid | QPSK | 24.50 | 0.97 | 25.47 | PASS |
| Band66 | 10 | 132622 | 1 | #Max | QPSK | 24.74 | 0.97 | 25.71 | PASS |
| Band66 | 10 | 132622 | 25 | #0 | QPSK | 24.30 | 0.97 | 25.27 | PASS |
| Band66 | 10 | 132622 | 25 | #Mid | QPSK | 24.29 | 0.97 | 25.26 | PASS |
| Band66 | 10 | 132622 | 25 | #Max | QPSK | 24.37 | 0.97 | 25.34 | PASS |
| Band66 | 10 | 132622 | 50 | #0 | QPSK | 24.31 | 0.97 | 25.28 | PASS |
| Band66 | 10 | 132622 | 1 | #0 | 16QAM | 23.77 | 0.97 | 24.74 | PASS |
| Band66 | 10 | 132622 | 1 | #Mid | 16QAM | 23.80 | 0.97 | 24.77 | PASS |
| Band66 | 10 | 132622 | 1 | #Max | 16QAM | 24.08 | 0.97 | 25.05 | PASS |
| Band66 | 10 | 132622 | 25 | #0 | 16QAM | 23.36 | 0.97 | 24.33 | PASS |
| Band66 | 10 | 132622 | 25 | #Mid | 16QAM | 23.38 | 0.97 | 24.35 | PASS |
| Band66 | 10 | 132622 | 25 | #Max | 16QAM | 23.51 | 0.97 | 24.48 | PASS |
| Band66 | 10 | 132622 | 50 | #0 | 16QAM | 23.39 | 0.97 | 24.36 | PASS |

| | | | | | | | | | |
|--------|----|--------|-----|------|-------|-------|------|-------|------|
| Band66 | 15 | 132047 | 1 | #0 | QPSK | 25.24 | 0.97 | 26.21 | PASS |
| Band66 | 15 | 132047 | 1 | #Mid | QPSK | 25.09 | 0.97 | 26.06 | PASS |
| Band66 | 15 | 132047 | 1 | #Max | QPSK | 25.11 | 0.97 | 26.08 | PASS |
| Band66 | 15 | 132047 | 36 | #0 | QPSK | 24.21 | 0.97 | 25.18 | PASS |
| Band66 | 15 | 132047 | 36 | #Mid | QPSK | 24.28 | 0.97 | 25.25 | PASS |
| Band66 | 15 | 132047 | 36 | #Max | QPSK | 24.17 | 0.97 | 25.14 | PASS |
| Band66 | 15 | 132047 | 75 | #0 | QPSK | 24.26 | 0.97 | 25.23 | PASS |
| Band66 | 15 | 132047 | 1 | #0 | 16QAM | 25.33 | 0.97 | 26.30 | PASS |
| Band66 | 15 | 132047 | 1 | #Mid | 16QAM | 25.15 | 0.97 | 26.12 | PASS |
| Band66 | 15 | 132047 | 1 | #Max | 16QAM | 25.20 | 0.97 | 26.17 | PASS |
| Band66 | 15 | 132047 | 36 | #0 | 16QAM | 23.42 | 0.97 | 24.39 | PASS |
| Band66 | 15 | 132047 | 36 | #Mid | 16QAM | 23.40 | 0.97 | 24.37 | PASS |
| Band66 | 15 | 132047 | 36 | #Max | 16QAM | 23.30 | 0.97 | 24.27 | PASS |
| Band66 | 15 | 132047 | 75 | #0 | 16QAM | 23.33 | 0.97 | 24.30 | PASS |
| Band66 | 15 | 132322 | 1 | #0 | QPSK | 25.48 | 0.97 | 26.45 | PASS |
| Band66 | 15 | 132322 | 1 | #Mid | QPSK | 25.42 | 0.97 | 26.39 | PASS |
| Band66 | 15 | 132322 | 1 | #Max | QPSK | 25.27 | 0.97 | 26.24 | PASS |
| Band66 | 15 | 132322 | 36 | #0 | QPSK | 24.49 | 0.97 | 25.46 | PASS |
| Band66 | 15 | 132322 | 36 | #Mid | QPSK | 24.45 | 0.97 | 25.42 | PASS |
| Band66 | 15 | 132322 | 36 | #Max | QPSK | 24.38 | 0.97 | 25.35 | PASS |
| Band66 | 15 | 132322 | 75 | #0 | QPSK | 24.47 | 0.97 | 25.44 | PASS |
| Band66 | 15 | 132322 | 1 | #0 | 16QAM | 25.10 | 0.97 | 26.07 | PASS |
| Band66 | 15 | 132322 | 1 | #Mid | 16QAM | 25.11 | 0.97 | 26.08 | PASS |
| Band66 | 15 | 132322 | 1 | #Max | 16QAM | 24.83 | 0.97 | 25.80 | PASS |
| Band66 | 15 | 132322 | 36 | #0 | 16QAM | 23.60 | 0.97 | 24.57 | PASS |
| Band66 | 15 | 132322 | 36 | #Mid | 16QAM | 23.62 | 0.97 | 24.59 | PASS |
| Band66 | 15 | 132322 | 36 | #Max | 16QAM | 23.52 | 0.97 | 24.49 | PASS |
| Band66 | 15 | 132322 | 75 | #0 | 16QAM | 23.44 | 0.97 | 24.41 | PASS |
| Band66 | 15 | 132597 | 1 | #0 | QPSK | 24.95 | 0.97 | 25.92 | PASS |
| Band66 | 15 | 132597 | 1 | #Mid | QPSK | 24.62 | 0.97 | 25.59 | PASS |
| Band66 | 15 | 132597 | 1 | #Max | QPSK | 24.58 | 0.97 | 25.55 | PASS |
| Band66 | 15 | 132597 | 36 | #0 | QPSK | 24.18 | 0.97 | 25.15 | PASS |
| Band66 | 15 | 132597 | 36 | #Mid | QPSK | 24.18 | 0.97 | 25.15 | PASS |
| Band66 | 15 | 132597 | 36 | #Max | QPSK | 24.20 | 0.97 | 25.17 | PASS |
| Band66 | 15 | 132597 | 75 | #0 | QPSK | 24.22 | 0.97 | 25.19 | PASS |
| Band66 | 15 | 132597 | 1 | #0 | 16QAM | 24.65 | 0.97 | 25.62 | PASS |
| Band66 | 15 | 132597 | 1 | #Mid | 16QAM | 24.11 | 0.97 | 25.08 | PASS |
| Band66 | 15 | 132597 | 1 | #Max | 16QAM | 24.14 | 0.97 | 25.11 | PASS |
| Band66 | 15 | 132597 | 36 | #0 | 16QAM | 23.19 | 0.97 | 24.16 | PASS |
| Band66 | 15 | 132597 | 36 | #Mid | 16QAM | 23.24 | 0.97 | 24.21 | PASS |
| Band66 | 15 | 132597 | 36 | #Max | 16QAM | 23.37 | 0.97 | 24.34 | PASS |
| Band66 | 15 | 132597 | 75 | #0 | 16QAM | 23.27 | 0.97 | 24.24 | PASS |
| Band66 | 20 | 132072 | 1 | #0 | QPSK | 25.47 | 0.97 | 26.44 | PASS |
| Band66 | 20 | 132072 | 1 | #Mid | QPSK | 25.36 | 0.97 | 26.33 | PASS |
| Band66 | 20 | 132072 | 1 | #Max | QPSK | 25.47 | 0.97 | 26.44 | PASS |
| Band66 | 20 | 132072 | 50 | #0 | QPSK | 24.22 | 0.97 | 25.19 | PASS |
| Band66 | 20 | 132072 | 50 | #Mid | QPSK | 24.27 | 0.97 | 25.24 | PASS |
| Band66 | 20 | 132072 | 50 | #Max | QPSK | 24.31 | 0.97 | 25.28 | PASS |
| Band66 | 20 | 132072 | 100 | #0 | QPSK | 24.24 | 0.97 | 25.21 | PASS |
| Band66 | 20 | 132072 | 1 | #0 | 16QAM | 24.44 | 0.97 | 25.41 | PASS |
| Band66 | 20 | 132072 | 1 | #Mid | 16QAM | 24.30 | 0.97 | 25.27 | PASS |
| Band66 | 20 | 132072 | 1 | #Max | 16QAM | 24.35 | 0.97 | 25.32 | PASS |
| Band66 | 20 | 132072 | 50 | #0 | 16QAM | 23.43 | 0.97 | 24.40 | PASS |
| Band66 | 20 | 132072 | 50 | #Mid | 16QAM | 23.40 | 0.97 | 24.37 | PASS |
| Band66 | 20 | 132072 | 50 | #Max | 16QAM | 23.44 | 0.97 | 24.41 | PASS |
| Band66 | 20 | 132072 | 100 | #0 | 16QAM | 23.35 | 0.97 | 24.32 | PASS |
| Band66 | 20 | 132322 | 1 | #0 | QPSK | 25.64 | 0.97 | 26.61 | PASS |

| | | | | | | | | | |
|--------|----|--------|-----|------|-------|-------|------|-------|------|
| Band66 | 20 | 132322 | 1 | #Mid | QPSK | 25.55 | 0.97 | 26.52 | PASS |
| Band66 | 20 | 132322 | 1 | #Max | QPSK | 25.36 | 0.97 | 26.33 | PASS |
| Band66 | 20 | 132322 | 50 | #0 | QPSK | 24.43 | 0.97 | 25.40 | PASS |
| Band66 | 20 | 132322 | 50 | #Mid | QPSK | 24.44 | 0.97 | 25.41 | PASS |
| Band66 | 20 | 132322 | 50 | #Max | QPSK | 24.39 | 0.97 | 25.36 | PASS |
| Band66 | 20 | 132322 | 100 | #0 | QPSK | 24.45 | 0.97 | 25.42 | PASS |
| Band66 | 20 | 132322 | 1 | #0 | 16QAM | 24.59 | 0.97 | 25.56 | PASS |
| Band66 | 20 | 132322 | 1 | #Mid | 16QAM | 24.59 | 0.97 | 25.56 | PASS |
| Band66 | 20 | 132322 | 1 | #Max | 16QAM | 24.39 | 0.97 | 25.36 | PASS |
| Band66 | 20 | 132322 | 50 | #0 | 16QAM | 23.49 | 0.97 | 24.46 | PASS |
| Band66 | 20 | 132322 | 50 | #Mid | 16QAM | 23.51 | 0.97 | 24.48 | PASS |
| Band66 | 20 | 132322 | 50 | #Max | 16QAM | 23.45 | 0.97 | 24.42 | PASS |
| Band66 | 20 | 132322 | 100 | #0 | 16QAM | 23.43 | 0.97 | 24.40 | PASS |
| Band66 | 20 | 132572 | 1 | #0 | QPSK | 25.04 | 0.97 | 26.01 | PASS |
| Band66 | 20 | 132572 | 1 | #Mid | QPSK | 24.63 | 0.97 | 25.60 | PASS |
| Band66 | 20 | 132572 | 1 | #Max | QPSK | 24.63 | 0.97 | 25.60 | PASS |
| Band66 | 20 | 132572 | 50 | #0 | QPSK | 24.13 | 0.97 | 25.10 | PASS |
| Band66 | 20 | 132572 | 50 | #Mid | QPSK | 24.18 | 0.97 | 25.15 | PASS |
| Band66 | 20 | 132572 | 50 | #Max | QPSK | 24.24 | 0.97 | 25.21 | PASS |
| Band66 | 20 | 132572 | 100 | #0 | QPSK | 24.25 | 0.97 | 25.22 | PASS |
| Band66 | 20 | 132572 | 1 | #0 | 16QAM | 24.28 | 0.97 | 25.25 | PASS |
| Band66 | 20 | 132572 | 1 | #Mid | 16QAM | 24.22 | 0.97 | 25.19 | PASS |
| Band66 | 20 | 132572 | 1 | #Max | 16QAM | 24.30 | 0.97 | 25.27 | PASS |
| Band66 | 20 | 132572 | 50 | #0 | 16QAM | 23.25 | 0.97 | 24.22 | PASS |
| Band66 | 20 | 132572 | 50 | #Mid | 16QAM | 23.31 | 0.97 | 24.28 | PASS |
| Band66 | 20 | 132572 | 50 | #Max | 16QAM | 23.36 | 0.97 | 24.33 | PASS |
| Band66 | 20 | 132572 | 100 | #0 | 16QAM | 23.31 | 0.97 | 24.28 | PASS |

TE
TC
OV
t See



14.2 Transmit Antennas and SAR Measurement Position

EUT Antenna Location:



| Antennas | Support Band |
|----------|--|
| Main | GSM 850/1900 + WCDMA Band 2/4/5 + LTE Band 2/4/5/7/12/17/25/26/66 TX |
| BT/WIFI | Bluetooth + WIFI 2.4G |

| Distance of The Antenna to the EUT surface and edge (mm) | | | | | | |
|--|-------|------|----------|-------------|-----------|------------|
| Antennas | Front | Back | Top Side | Bottom Side | Left Side | Right Side |
| Main | <25 | <25 | <25 | 154 | 49 | 124 |
| BT/WIFI | <25 | <25 | <25 | 154 | 202 | 26 |

| Body mode: Positions for SAR tests | | | | | | |
|------------------------------------|-------|------|----------|-------------|-----------|------------|
| Antennas | Front | Back | Top Side | Bottom Side | Left Side | Right Side |
| Main | Yes | Yes | Yes | No | No | No |
| BT/WIFI | Yes | Yes | Yes | No | No | No |

Note:

- Referring to KDB 616217 D04 v01r02, KDB 248227 D01 v02r02 and KDB 447498 D01 v06, this device is overall diagonal dimension (>20cm) tablet, tested in direct contact (no gap) with flat phantom.

14.3 Measured and Reported (Scaled) SAR Results

The calculated SAR is obtained by the following formula:

1. Reported SAR for WWAN=Measured SAR * Tune-up Scaling factor
2. Reported SAR for WLAN and Bluetooth=Measured SAR * Tune-up Scaling factor * Duty Cycle Scaling factor
3. Duty Cycle Scaling factor=1/ Duty Cycle (%)

KDB 447498 D01 General RF Exposure Guidance:

Testing of other required channels within the operating mode of a frequency band is not required when the reported 1-g or 10-g SAR for the mid-band or highest output power channel is:

- ≤ 0.8 W/kg or 2.0 W/kg, for 1-g or 10-g respectively, when the transmission band is ≤ 100 MHz
- ≤ 0.6 W/kg or 1.5 W/kg, for 1-g or 10-g respectively, when the transmission band is between 100 MHz and 200 MHz
- ≤ 0.4 W/kg or 1.0 W/kg, for 1-g or 10-g respectively, when the transmission band is ≥ 200 MHz

KDB 648474 D04 Handset SAR v01r03:

1. When the *reported* SAR for a body-worn accessory, measured without a headset connected to the handset, is > 1.2 W/kg, the highest *reported* SAR configuration for that wireless mode and frequency band should be repeated for the body-worn accessory with a headset attached to the handset.
2. when the separation distance required for body-worn accessory testing is larger than or equal to that tested for hotspot mode, using the same wireless mode test configuration for voice and data, such as UMTS, LTE and Wi-Fi, and for the same surface of the phone, the hotspot mode SAR data may be used to support body-worn accessory SAR compliance for that particular configuration (surface)
3. For Smart phones with a display diagonal dimension > 15.0 cm or an overall diagonal dimension > 16.0 cm, when hotspot mode applies, 10-g extremity SAR is required only for the surfaces and edges with hotspot mode 1-g reported SAR > 1.2 W/kg.

KDB 941225 D01 3G SAR Procedures:

When the maximum output power and tune-up tolerance specified for production units in a secondary mode is $\leq 1/4$ dB higher than the primary mode (RMC12.2kbps) or when the highest reported SAR of the primary mode is scaled by the ratio of specified maximum output power and tune-up tolerance of secondary to primary mode and the adjusted SAR is ≤ 1.2 W/kg, SAR measurement is not required for the secondary mode.

KDB 941225 D05 SAR for LTE Devices:

1. Start with the largest channel bandwidth and measure SAR for QPSK with 1 RB, and 50% RB allocation, using the RB offset and required test channel combination with the highest maximum output power among RB offsets at the upper edge, middle and lower edge of each required test channel.
2. When the reported SAR is > 0.8 W/kg, testing for other Channels is performed at the highest output power level for 1RB, and 50% RB configuration for that channel.
3. Testing for 100% RB configuration is performed at the highest output power level for 100% RB configuration across the Low, Mid and High Channel when the highest reported SAR for 1 RB and 50% RB are > 0.8 W/kg. Testing for the remaining required channels is not needed because the reported SAR for 100% RB Allocation < 1.45 W/kg.
4. SAR measurement is not required for the 16QAM and 64QAM. When the highest maximum output power for 16QAM and 64QAM is $\leq 1/2$ dB higher than the QPSK or when the reported SAR for the QPSK configuration is ≤ 1.45 W/kg.
5. Testing for the other channel bandwidths is not required because the reported SAR for the highest channel bandwidth is < 1.45 W/Kg and its output power is not more than 0.5 dB higher than that of the highest channel bandwidth.

CO.LTD

KDB 248227 D01 802.11 Wi-Fi SAR

SAR test reduction for 802.11 Wi-Fi transmission mode configurations are considered separately for DSSS and OFDM. An initial test position is determined to reduce the number of tests required for certain exposure configurations with multiple test positions. An initial test configuration is determined for each frequency band and aggregated band according to maximum output power, channel bandwidth, wireless mode configurations and other operating parameters to streamline the measurement requirements.

For 2.4 GHz 802.11b DSSS, either the initial test position procedure for multiple exposure test positions or the DSSS procedure for fixed exposure position is applied; these are mutually exclusive. For 2.4 GHz and 5 GHz OFDM configurations, the initial test configuration is applied to measure SAR using either the initial test position procedure for multiple exposure test position configurations or the initial test configuration procedures for fixed exposure test conditions.

DSSS and OFDM configurations are considered separately according to the required SAR procedures. SAR is measured in the initial test position using the 802.11 transmission mode configuration required by the DSSS procedure or initial test configuration and subsequent test configuration(s) according to the OFDM procedures.16 The initial test position procedure is described in the following:

- a) When the *reported* SAR of the initial test position is ≤ 0.4 W/kg, further SAR measurement is not required for the other (remaining) test positions in that exposure configuration and 802.11 transmission mode combinations within the frequency band or aggregated band. SAR is also not required for that exposure configuration in the subsequent test configuration(s).
- b) When the *reported* SAR of the initial test position is > 0.4 W/kg, SAR is repeated for the 802.11 transmission mode configuration tested in the initial test position using subsequent highest extrapolated or estimated 1-g SAR conditions determined by area scans or next closest/smallest test separation distance and maximum RF coupling test positions based on manufacturer justification, on the highest maximum output power channel, until the *reported* SAR is ≤ 0.8 W/kg or all required test positions (left, right, touch, tilt or subsequent surfaces and edges) are tested.
- c) For all positions/configurations tested using the initial test position and subsequent test positions, when the *reported* SAR is > 0.8 W/kg, SAR is measured for these test positions/configurations on the subsequent next highest measured output power channel(s) until the *reported* SAR is ≤ 1.2 W/kg or all required channels are tested.

Additional power measurements may be required for this step, which should be limited to those necessary for identifying the subsequent highest output power channels.

When the specified maximum output power is the same for both UNII 1 and UNII 2A, begin SAR measurements in UNII 2A with the channel with the highest measured output power. If the reported SAR for UNII 2A is ≤ 1.2 W/kg, SAR is not required for UNII 1; otherwise treat the remaining bands separately and test them independently for SAR.

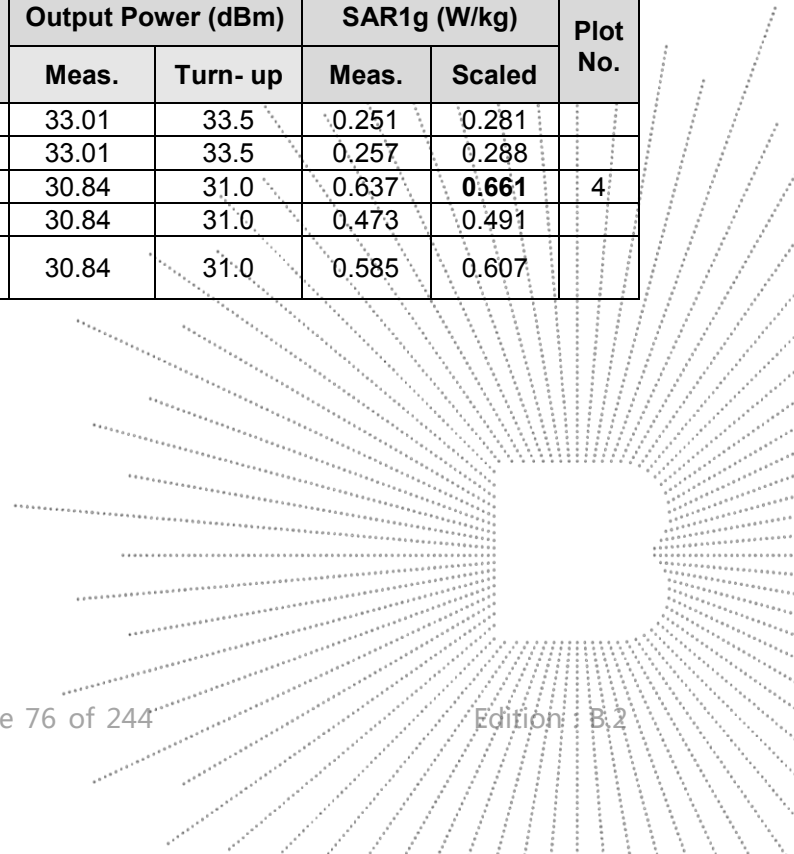
When the specified maximum output power is different between UNII 1 and UNII 2A, begin SAR with the band that has the higher specified maximum output. If the highest reported SAR for the band with the highest specified power is ≤ 1.2 W/kg, testing for the band with the lower specified output power is not required; otherwise test the remaining bands independently for SAR

| WIFI 2.4G | | | | | | | | |
|------------------------|---------|---------------|-------------|--------------------|----------|--------------|--------------|----------|
| RF Exposure Conditions | Mode | Test Position | Freq. (MHz) | Output Power (dBm) | | SAR1g (W/kg) | | Plot No. |
| | | | | Meas. | Turn- up | Meas. | Scaled | |
| Body (0mm) | 802.11b | Front Face | 2412 | 12.00 | 12.5 | 0.105 | 0.118 | 1 |
| | | Back Face | 2412 | 12.00 | 12.5 | 0.071 | 0.080 | |
| Hotspot (0mm) | | Top Side | 2412 | 12.00 | 12.5 | 0.126 | 0.141 | |

| WIFI 5.2G | | | | | | | | |
|------------------------|---------|---------------|-------------|--------------------|----------|--------------|--------------|----------|
| RF Exposure Conditions | Mode | Test Position | Freq. (MHz) | Output Power (dBm) | | SAR1g (W/kg) | | Plot No. |
| | | | | Meas. | Turn- up | Meas. | Scaled | |
| Body (0mm) | 802.11a | Front Face | 5200 | 13.89 | 14.0 | 0.217 | 0.223 | 2 |
| | | Back Face | 5200 | 13.89 | 14.0 | 0.337 | 0.346 | |
| Hotspot (0mm) | | Top Side | 5200 | 13.89 | 14.0 | 0.360 | 0.369 | |

| WIFI 5.8G | | | | | | | | |
|------------------------|---------|---------------|-------------|--------------------|----------|--------------|--------------|----------|
| RF Exposure Conditions | Mode | Test Position | Freq. (MHz) | Output Power (dBm) | | SAR1g (W/kg) | | Plot No. |
| | | | | Meas. | Turn- up | Meas. | Scaled | |
| Body (0mm) | 802.11a | Front Face | 5785 | 12.11 | 12.5 | 0.365 | 0.399 | 3 |
| | | Back Face | 5785 | 12.11 | 12.5 | 0.407 | 0.445 | |
| Hotspot (0mm) | | Top Side | 5785 | 12.11 | 12.5 | 0.354 | 0.387 | |

| GSM 850 | | | | | | | | |
|------------------------|------|---------------|-------------|--------------------|----------|--------------|--------------|----------|
| RF Exposure Conditions | Mode | Test Position | Freq. (MHz) | Output Power (dBm) | | SAR1g (W/kg) | | Plot No. |
| | | | | Meas. | Turn- up | Meas. | Scaled | |
| Body (0mm) | GSM | Front Face | 824.2 | 33.01 | 33.5 | 0.251 | 0.281 | 4 |
| | | Back Face | 824.2 | 33.01 | 33.5 | 0.257 | 0.288 | |
| Hotspot (0mm) | GPRS | Front Face | 824.2 | 30.84 | 31.0 | 0.637 | 0.661 | |
| | | Back Face | 824.2 | 30.84 | 31.0 | 0.473 | 0.491 | |
| Hotspot (0mm) | | Top Side | 824.2 | 30.84 | 31.0 | 0.585 | 0.607 | |



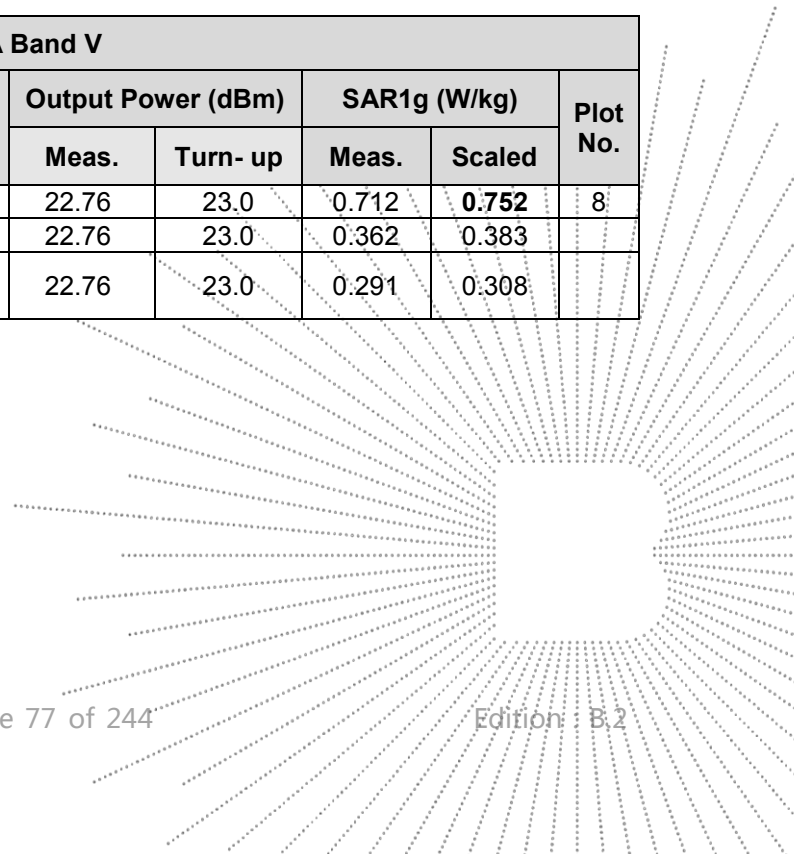
| GSM 1900 | | | | | | | | |
|------------------------|------|---------------|-------------|--------------------|----------|--------------|--------------|----------|
| RF Exposure Conditions | Mode | Test Position | Freq. (MHz) | Output Power (dBm) | | SAR1g (W/kg) | | Plot No. |
| | | | | Meas. | Turn- up | Meas. | Scaled | |
| Body (0mm) | GSM | Front Face | 1850.2 | 29.97 | 30.0 | 0.197 | 0.198 | 5 |
| | | Back Face | 1850.2 | 29.97 | 30.0 | 0.368 | 0.371 | |
| Hotspot (0mm) | GPRS | Front Face | 1850.2 | 26.60 | 27.0 | 0.618 | 0.678 | |
| | | Back Face | 1850.2 | 26.60 | 27.0 | 0.588 | 0.645 | |
| | | Top Side | 1850.2 | 26.60 | 27.0 | 0.618 | 0.678 | |

| WCDMA Band II | | | | | | | | |
|------------------------|------|---------------|-------------|--------------------|----------|--------------|--------------|----------|
| RF Exposure Conditions | Mode | Test Position | Freq. (MHz) | Output Power (dBm) | | SAR1g (W/kg) | | Plot No. |
| | | | | Meas. | Turn- up | Meas. | Scaled | |
| Body (0mm) | RMC | Front Face | 1880.0 | 22.70 | 23.0 | 0.500 | 0.536 | 6 |
| | | Back Face | 1880.0 | 22.70 | 23.0 | 0.688 | 0.737 | |
| Hotspot (0mm) | | Top Side | 1880.0 | 22.70 | 23.0 | 0.504 | 0.540 | |

| WCDMA Band IV | | | | | | | | |
|------------------------|------|---------------|-------------|--------------------|----------|--------------|--------------|----------|
| RF Exposure Conditions | Mode | Test Position | Freq. (MHz) | Output Power (dBm) | | SAR1g (W/kg) | | Plot No. |
| | | | | Meas. | Turn- up | Meas. | Scaled | |
| Body (0mm) | RMC | Front Face | 1740 | 22.48 | 22.5 | 0.605 | 0.608 | 7 |
| | | Back Face | 1740 | 22.48 | 22.5 | 0.193 | 0.194 | |
| Hotspot (0mm) | | Top Side | 1740 | 22.48 | 22.5 | 0.238 | 0.239 | |

| WCDMA Band V | | | | | | | | |
|------------------------|------|---------------|-------------|--------------------|----------|--------------|--------------|----------|
| RF Exposure Conditions | Mode | Test Position | Freq. (MHz) | Output Power (dBm) | | SAR1g (W/kg) | | Plot No. |
| | | | | Meas. | Turn- up | Meas. | Scaled | |
| Body (0mm) | RMC | Front Face | 846.6 | 22.76 | 23.0 | 0.712 | 0.752 | 8 |
| | | Back Face | 846.6 | 22.76 | 23.0 | 0.362 | 0.383 | |
| Hotspot (0mm) | | Top Side | 846.6 | 22.76 | 23.0 | 0.291 | 0.308 | |

BCTC
 BCTC
 PPR
 Report

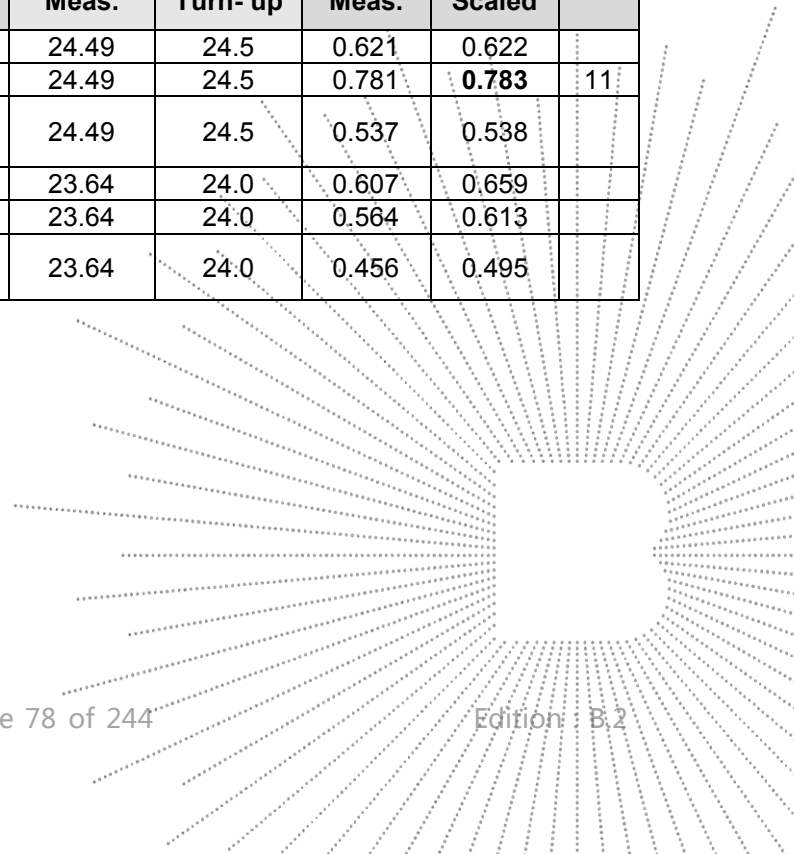


| LTE Band 2 (20MHz Bandwidth) | | | | | | | | |
|------------------------------|------------|---------------|-------------|--------------------|----------|--------------|--------------|----------|
| RF Exposure Conditions | Mode | Test Position | Freq. (MHz) | Output Power (dBm) | | SAR1g (W/kg) | | Plot No. |
| | | | | Meas. | Turn- up | Meas. | Scaled | |
| Body (0mm) | QPSK 1RB | Front Face | 1900 | 24.88 | 25.0 | 0.786 | 0.808 | 9 |
| | | Back Face | 1900 | 24.88 | 25.0 | 0.619 | 0.636 | |
| Hotspot (0mm) | | Top Side | 1900 | 24.88 | 25.0 | 0.756 | 0.777 | |
| Body (0mm) | QPSK 50%RB | Front Face | 1860 | 23.65 | 24.0 | 0.651 | 0.706 | |
| | | Back Face | 1860 | 23.65 | 24.0 | 0.608 | 0.659 | |
| Hotspot (0mm) | | Top Side | 1860 | 23.65 | 24.0 | 0.519 | 0.563 | |

| LTE Band 4 (20MHz Bandwidth) | | | | | | | | |
|------------------------------|------------|---------------|-------------|--------------------|----------|--------------|--------------|----------|
| RF Exposure Conditions | Mode | Test Position | Freq. (MHz) | Output Power (dBm) | | SAR1g (W/kg) | | Plot No. |
| | | | | Meas. | Turn- up | Meas. | Scaled | |
| Body (0mm) | QPSK 1RB | Front Face | 1732.5 | 25.16 | 25.5 | 0.644 | 0.696 | 10 |
| | | Back Face | 1732.5 | 25.16 | 25.5 | 0.361 | 0.390 | |
| Hotspot (0mm) | | Top Side | 1732.5 | 25.16 | 25.5 | 0.515 | 0.557 | |
| Body (0mm) | QPSK 50%RB | Front Face | 1745 | 23.98 | 24.0 | 0.541 | 0.543 | |
| | | Back Face | 1745 | 23.98 | 24.0 | 0.307 | 0.308 | |
| Hotspot (0mm) | | Top Side | 1745 | 23.98 | 24.0 | 0.409 | 0.411 | |

| LTE Band 5 (10MHz Bandwidth) | | | | | | | | |
|------------------------------|------------|---------------|-------------|--------------------|----------|--------------|--------------|----------|
| RF Exposure Conditions | Mode | Test Position | Freq. (MHz) | Output Power (dBm) | | SAR1g (W/kg) | | Plot No. |
| | | | | Meas. | Turn- up | Meas. | Scaled | |
| Body (0mm) | QPSK 1RB | Front Face | 844 | 24.49 | 24.5 | 0.621 | 0.622 | 11 |
| | | Back Face | 844 | 24.49 | 24.5 | 0.781 | 0.783 | |
| Hotspot (0mm) | | Top Side | 844 | 24.49 | 24.5 | 0.537 | 0.538 | |
| Body (0mm) | QPSK 50%RB | Front Face | 844 | 23.64 | 24.0 | 0.607 | 0.659 | |
| | | Back Face | 844 | 23.64 | 24.0 | 0.564 | 0.613 | |
| Hotspot (0mm) | | Top Side | 844 | 23.64 | 24.0 | 0.456 | 0.495 | |

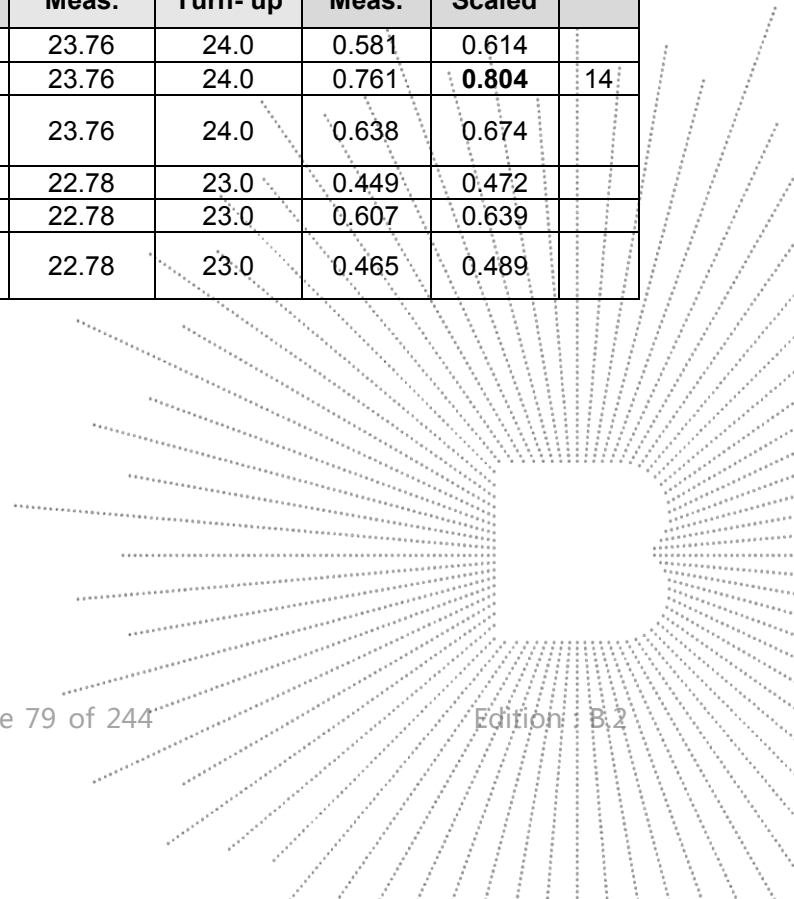
TEST
 TO
 OVER
 t See



| LTE Band 7 (20MHz Bandwidth) | | | | | | | | |
|------------------------------|------------|---------------|-------------|--------------------|----------|--------------|--------------|----------|
| RF Exposure Conditions | Mode | Test Position | Freq. (MHz) | Output Power (dBm) | | SAR1g (W/kg) | | Plot No. |
| | | | | Meas. | Turn- up | Meas. | Scaled | |
| Body (0mm) | QPSK 1RB | Front Face | 2560 | 20.13 | 20.5 | 0.516 | 0.562 | 12 |
| | | Back Face | 2560 | 20.13 | 20.5 | 0.557 | 0.607 | |
| Hotspot (0mm) | | Top Side | 2560 | 20.13 | 20.5 | 0.749 | 0.816 | |
| Body (0mm) | QPSK 50%RB | Front Face | 2560 | 19.25 | 19.5 | 0.463 | 0.490 | |
| | | Back Face | 2560 | 19.25 | 19.5 | 0.479 | 0.507 | |
| Hotspot (0mm) | | Top Side | 2560 | 19.25 | 19.5 | 0.580 | 0.614 | |

| LTE Band 12 (10MHz Bandwidth) | | | | | | | | |
|-------------------------------|------------|---------------|-------------|--------------------|----------|--------------|--------------|----------|
| RF Exposure Conditions | Mode | Test Position | Freq. (MHz) | Output Power (dBm) | | SAR1g (W/kg) | | Plot No. |
| | | | | Meas. | Turn- up | Meas. | Scaled | |
| Body (0mm) | QPSK 1RB | Front Face | 711 | 24.36 | 24.5 | 0.429 | 0.443 | 13 |
| | | Back Face | 711 | 24.36 | 24.5 | 0.518 | 0.535 | |
| Hotspot (0mm) | | Top Side | 711 | 24.36 | 24.5 | 0.338 | 0.349 | |
| Body (0mm) | QPSK 50%RB | Front Face | 711 | 23.43 | 23.5 | 0.416 | 0.423 | |
| | | Back Face | 711 | 23.43 | 23.5 | 0.463 | 0.471 | |
| Hotspot (0mm) | | Top Side | 711 | 23.43 | 23.5 | 0.319 | 0.324 | |

| LTE Band 17 (10MHz Bandwidth) | | | | | | | | |
|-------------------------------|------------|---------------|-------------|--------------------|----------|--------------|--------------|----------|
| RF Exposure Conditions | Mode | Test Position | Freq. (MHz) | Output Power (dBm) | | SAR1g (W/kg) | | Plot No. |
| | | | | Meas. | Turn- up | Meas. | Scaled | |
| Body (0mm) | QPSK 1RB | Front Face | 711 | 23.76 | 24.0 | 0.581 | 0.614 | 14 |
| | | Back Face | 711 | 23.76 | 24.0 | 0.761 | 0.804 | |
| Hotspot (0mm) | | Top Side | 711 | 23.76 | 24.0 | 0.638 | 0.674 | |
| Body (0mm) | QPSK 50%RB | Front Face | 711 | 22.78 | 23.0 | 0.449 | 0.472 | |
| | | Back Face | 711 | 22.78 | 23.0 | 0.607 | 0.639 | |
| Hotspot (0mm) | | Top Side | 711 | 22.78 | 23.0 | 0.465 | 0.489 | |



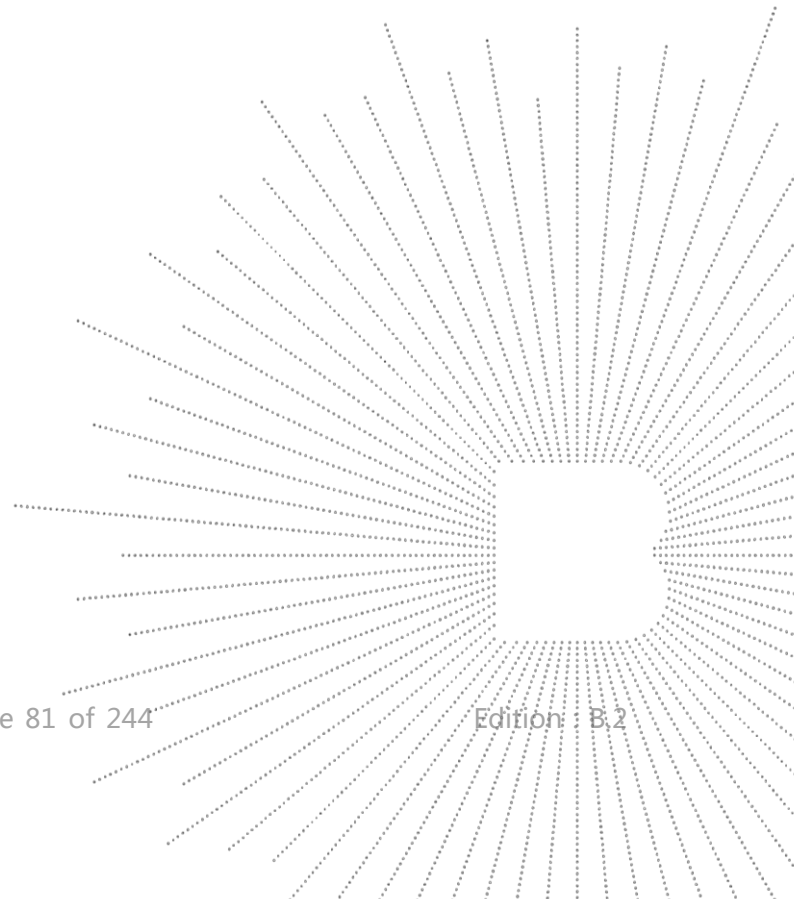
| LTE Band 25 (20MHz Bandwidth) | | | | | | | | |
|-------------------------------|------------|---------------|-------------|--------------------|----------|--------------|--------------|----------|
| RF Exposure Conditions | Mode | Test Position | Freq. (MHz) | Output Power (dBm) | | SAR1g (W/kg) | | Plot No. |
| | | | | Meas. | Turn- up | Meas. | Scaled | |
| Body (0mm) | QPSK 1RB | Front Face | 1905 | 24.04 | 24.5 | 0.583 | 0.648 | 15 |
| | | Back Face | 1905 | 24.04 | 24.5 | 0.571 | 0.635 | |
| Hotspot (0mm) | | Top Side | 1905 | 24.04 | 24.5 | 0.354 | 0.394 | |
| Body (0mm) | QPSK 50%RB | Front Face | 1905 | 22.86 | 23.0 | 0.457 | 0.472 | |
| Body (0mm) | | Back Face | 1905 | 22.86 | 23.0 | 0.309 | 0.319 | |
| Hotspot (0mm) | | Top Side | 1905 | 22.86 | 23.0 | 0.352 | 0.364 | |

| LTE Band 26 (814-824) (10MHz Bandwidth) | | | | | | | | |
|---|------------|---------------|-------------|--------------------|----------|--------------|--------------|----------|
| RF Exposure Conditions | Mode | Test Position | Freq. (MHz) | Output Power (dBm) | | SAR1g (W/kg) | | Plot No. |
| | | | | Meas. | Turn- up | Meas. | Scaled | |
| Body (0mm) | QPSK 1RB | Front Face | 819 | 24.25 | 24.5 | 0.490 | 0.519 | 16 |
| | | Back Face | 819 | 24.25 | 24.5 | 0.614 | 0.650 | |
| Hotspot (0mm) | | Top Side | 819 | 24.25 | 24.5 | 0.564 | 0.597 | |
| Body (0mm) | QPSK 50%RB | Front Face | 819 | 22.22 | 22.5 | 0.364 | 0.388 | |
| Body (0mm) | | Back Face | 819 | 22.22 | 22.5 | 0.511 | 0.545 | |
| Hotspot (0mm) | | Top Side | 819 | 22.22 | 22.5 | 0.408 | 0.435 | |

| LTE Band 26 (824-849) (15MHz Bandwidth) | | | | | | | | |
|---|------------|---------------|-------------|--------------------|----------|--------------|--------------|----------|
| RF Exposure Conditions | Mode | Test Position | Freq. (MHz) | Output Power (dBm) | | SAR1g (W/kg) | | Plot No. |
| | | | | Meas. | Turn- up | Meas. | Scaled | |
| Body (0mm) | QPSK 1RB | Front Face | 841.5 | 24.51 | 25.0 | 0.534 | 0.598 | 17 |
| | | Back Face | 841.5 | 24.51 | 25.0 | 0.719 | 0.805 | |
| Hotspot (0mm) | | Top Side | 841.5 | 24.51 | 25.0 | 0.404 | 0.452 | |
| Body (0mm) | QPSK 50%RB | Front Face | 841.5 | 22.55 | 23.0 | 0.330 | 0.366 | |
| Body (0mm) | | Back Face | 841.5 | 22.55 | 23.0 | 0.577 | 0.640 | |
| Hotspot (0mm) | | Top Side | 841.5 | 22.55 | 23.0 | 0.333 | 0.369 | |

CO., LTD.

| LTE Band 66 (20MHz Bandwidth) | | | | | | | | |
|-------------------------------|------------|---------------|-------------|--------------------|----------|--------------|--------------|----------|
| RF Exposure Conditions | Mode | Test Position | Freq. (MHz) | Output Power (dBm) | | SAR1g (W/kg) | | Plot No. |
| | | | | Meas. | Turn- up | Meas. | Scaled | |
| Body (0mm) | QPSK 1RB | Front Face | 1745 | 25.64 | 26.0 | 0.657 | 0.714 | 18 |
| | | Back Face | 1745 | 25.64 | 26.0 | 0.583 | 0.633 | |
| Hotspot (0mm) | | Top Side | 1745 | 25.64 | 26.0 | 0.429 | 0.466 | |
| Body (0mm) | QPSK 50%RB | Front Face | 1770 | 24.44 | 24.5 | 0.325 | 0.330 | |
| | | Back Face | 1770 | 24.44 | 24.5 | 0.354 | 0.359 | |
| Hotspot (0mm) | | Top Side | 1770 | 24.44 | 24.5 | 0.407 | 0.413 | |



14.4 SAR Measurement Variability

According to KDB865664, Repeated measurements are required only when the measured SAR is ≥ 0.80 W/kg. If the measured SAR value of the initial repeated measurement is < 1.45 W/kg with $\leq 20\%$ variation, only one repeated measurement is required to reaffirm that the results are not expected to have substantial variations, which may introduce significant compliance concerns. A second repeated measurement is required only if the measured result for the initial repeated measurement is within 10% of the SAR limit and vary by more than 20%, which are often related to device and measurement setup difficulties. The following procedures are applied to determine if repeated measurements are required. The same procedures should be adapted for measurements according to extremity and occupational exposure limits by applying a factor of 2.5 for extremity exposure and a factor of 5 for occupational exposure to the corresponding SAR thresholds.¹⁹ The repeated measurement results must be clearly identified in the SAR report. All measured SAR, including the repeated results, must be considered to determine compliance and for reporting according to KDB 690783. Repeated measurement is not required when the original highest measured SAR is < 0.80 W/kg; steps 2) through 4) do not apply.

- 1) When the original highest measured SAR is ≥ 0.80 W/kg, repeat that measurement once.
- 2) Perform a second repeated measurement only if the ratio of largest to smallest SAR for the original and first repeated measurements is > 1.20 or when the original or repeated measurement is ≥ 1.45 W/kg (~ 10% from the 1-g SAR limit).
- 3) Perform a third repeated measurement only if the original, first or second repeated measurement is ≥ 1.5 W/kg and the ratio of largest to smallest SAR for the original, first and second repeated measurements is > 1.20 .
- 4) Perform a third repeated measurement only if the original, first or second repeated measurement is ≥ 1.5 W/kg and the ratio of largest to smallest SAR for the original, first and second repeated measurements is > 1.20 .

| Test Mode | Frequency Band (MHz) | RF Exposure Configuration | Test Position | Repeated SAR (yes/no) | Highest Measured SAR1-g (W/Kg) | First Repeated | |
|-----------|----------------------|---------------------------|---------------|-----------------------|--------------------------------|------------------------|-------------------------------|
| | | | | | | Measured SAR1-g (W/Kg) | Largest to Smallest SAR Ratio |
| / | / | / | / | / | / | / | / |

14.5 Simultaneous Transmission Evaluation

Simultaneous transmission SAR test exclusion is determined for each operating configuration and exposure condition according to the reported standalone SAR of each applicable simultaneous transmitting antenna.

Application Simultaneous Transmission information:

| No. | Configurations | Body SAR |
|-----|---------------------|----------|
| 1 | WWAN + WIFI | Yes |
| 2 | WWAN + Bluetooth | Yes |
| 3 | WIFI 2.4G + WIFI 5G | No |
| 4 | WIFI + Bluetooth | No |

Remark:

1. Wi-Fi 2.4GHz and Wi-Fi 5GHz cannot transmit simultaneously.
2. WIFI2.4G and Bluetooth are the same antenna and cannot be sent at the same time.
3. According to the KDB 447498 D01 v06, when standalone SAR test exclusion applies to an antenna that transmits simultaneously with other antennas, the standalone SAR must be estimated according to following to determine simultaneous transmission SAR test exclusion:

- (max. power of channel, including tune-up tolerance, mW)/(min. test separation distance, mm)]·[√f(GHz)/x] W/kg for test separation distances ≤ 50 mm;
where x = 7.5 for 1-g SAR, and x = 18.75 for 10-g SAR.
- 0.4 W/kg for 1-g SAR and 1.0 W/kg for 10-g SAR, when the test separation distances is > 50 mm

| Estimated stand alone SAR | | | | | |
|---------------------------|-----------------|--------------------|--------------------------|-----|-------------------------|
| Mode | Frequency (MHz) | Maximum Power (mW) | Separation Distance (mm) | X | Estimated SAR1-g (W/kg) |
| Bluetooth | 2480 | 1.41 | 5 | 3.0 | 0.058 |
| Bluetooth | 2480 | 1.41 | 10 | 7.5 | 0.029 |

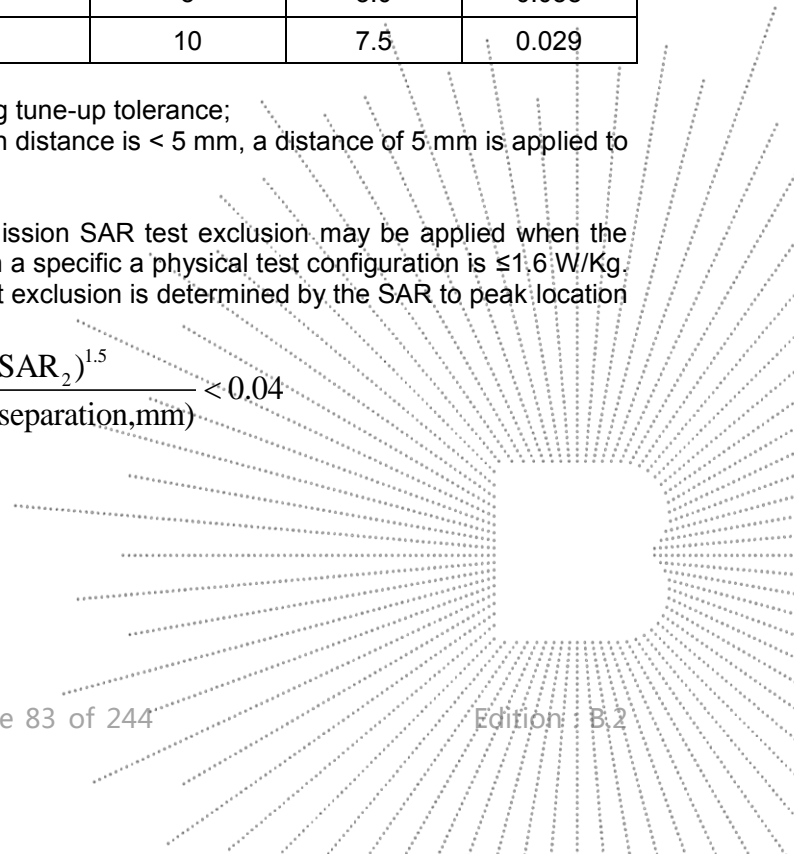
Note:

1. Maximum average power including tune-up tolerance;
2. When the minimum test separation distance is < 5 mm, a distance of 5 mm is applied to determine SAR test exclusion

4. Per FCC KD B447498 D01, simultaneous transmission SAR test exclusion may be applied when the sum of the 1-g SAR for all the transmitting antenna in a specific a physical test configuration is ≤1.6 W/Kg. When the sum is greater than the SAR limit, SAR test exclusion is determined by the SAR to peak location separation ratio.

$$\text{Ratio} = \frac{(\text{SAR}_1 + \text{SAR}_2)^{1.5}}{(\text{peak location separation, mm})} < 0.04$$

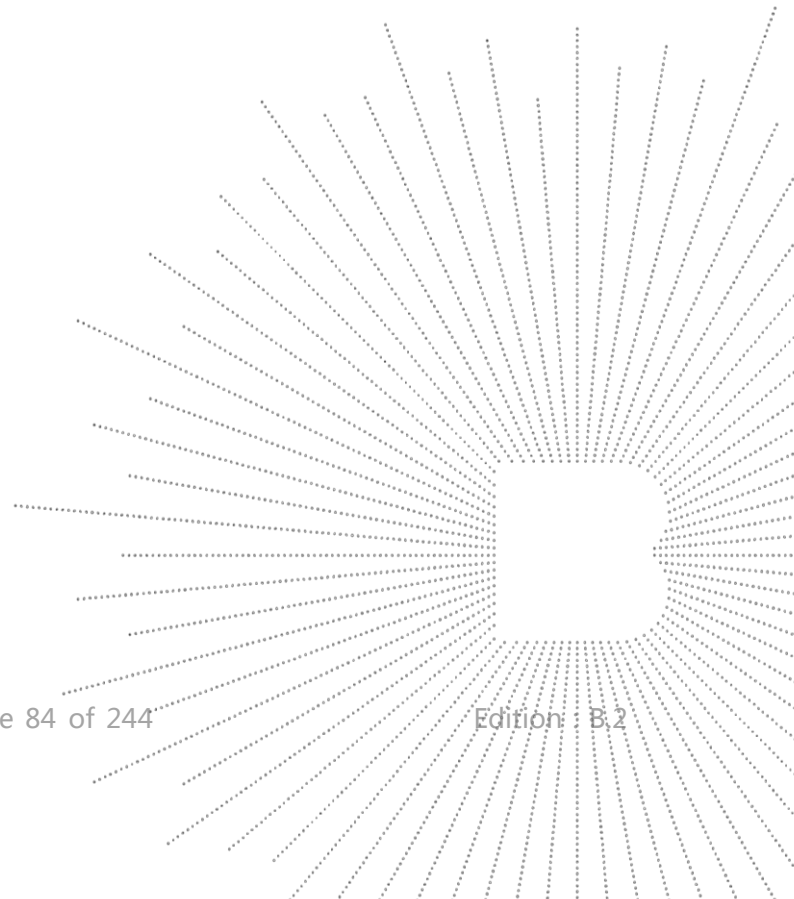
BCTC
APP
Rep



5. Simultaneous transmission of maximum SAR sum calculation.

| RF Exposure Conditions | Test Position | Standalone SAR (W/kg) | | | Summed SAR (W/kg) | |
|------------------------|---------------|-----------------------|-------|-----------|-------------------|-------|
| | | 1 | 2 | 3 | 1+2 | 1+3 |
| | | WWAN | WIFI | Bluetooth | | |
| Body (0mm) | Front | 0.808 | 0.399 | 0.058 | 1.207 | 0.866 |
| | Back | 0.805 | 0.445 | 0.058 | 1.250 | 0.863 |
| Hotspot (0mm) | Top | 0.816 | 0.387 | 0.058 | 1.203 | 0.874 |
| | Bottom | / | / | / | / | / |
| | Left | / | / | / | / | / |
| | Right | / | / | / | / | / |

CT
 CT
 PROC
 ort



15. Test Plots

15.1 System Performance Check

System check at 750 MHz

Date of measurement: 14/8/2024

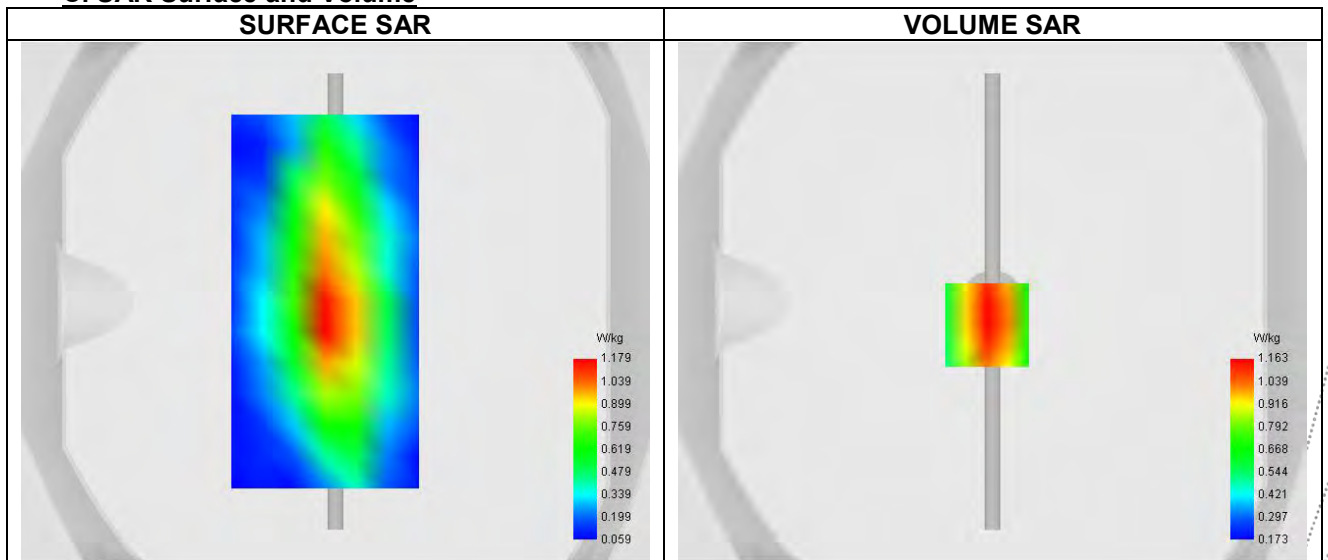
A. Experimental conditions.

| | |
|-----------------|----------------------------|
| Probe | SN 26/23 EPGO420 |
| ConvF | 0.87 |
| Area Scan | surf_sam_plan.txt |
| Zoom Scan | 5x5x7,dx=8mm dy=8mm dz=5mm |
| Phantom | Validation plane |
| Device Position | Dipole |
| Band | CW750 |
| Signal | CW |

B. Permittivity

| | |
|--|---------|
| Frequency (MHz) | 750.000 |
| Relative permittivity (real part) | 42.601 |
| Relative permittivity (imaginary part) | 24.595 |
| Conductivity (S/m) | 0.870 |

C. SAR Surface and Volume



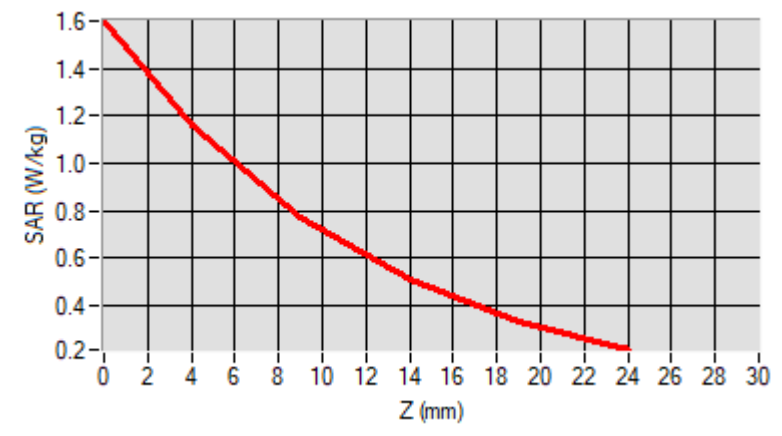
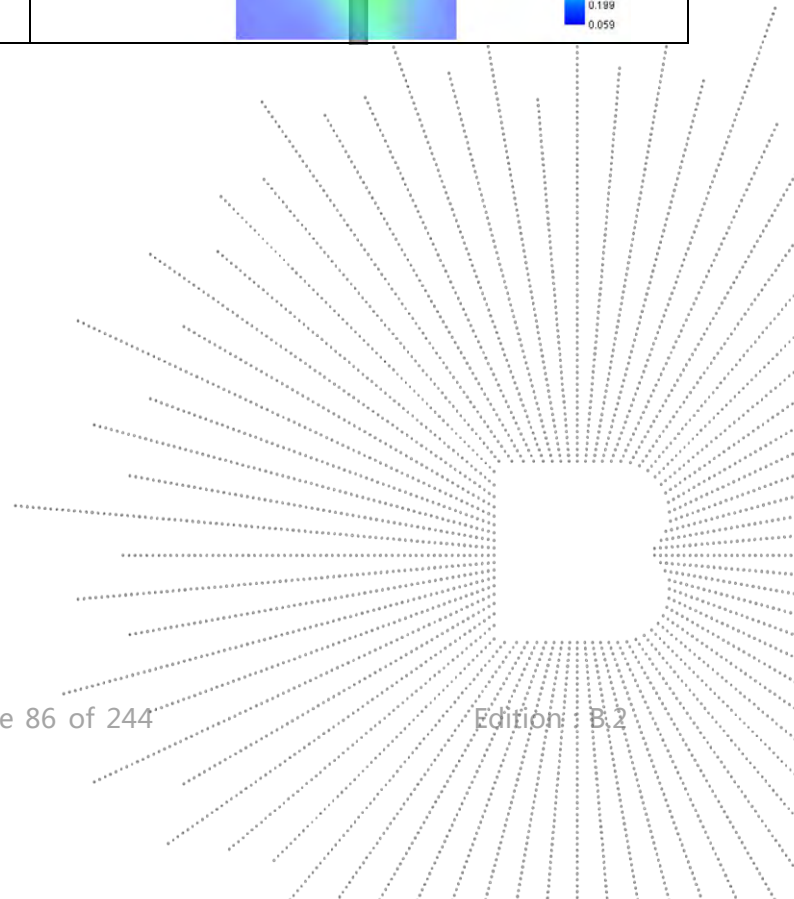
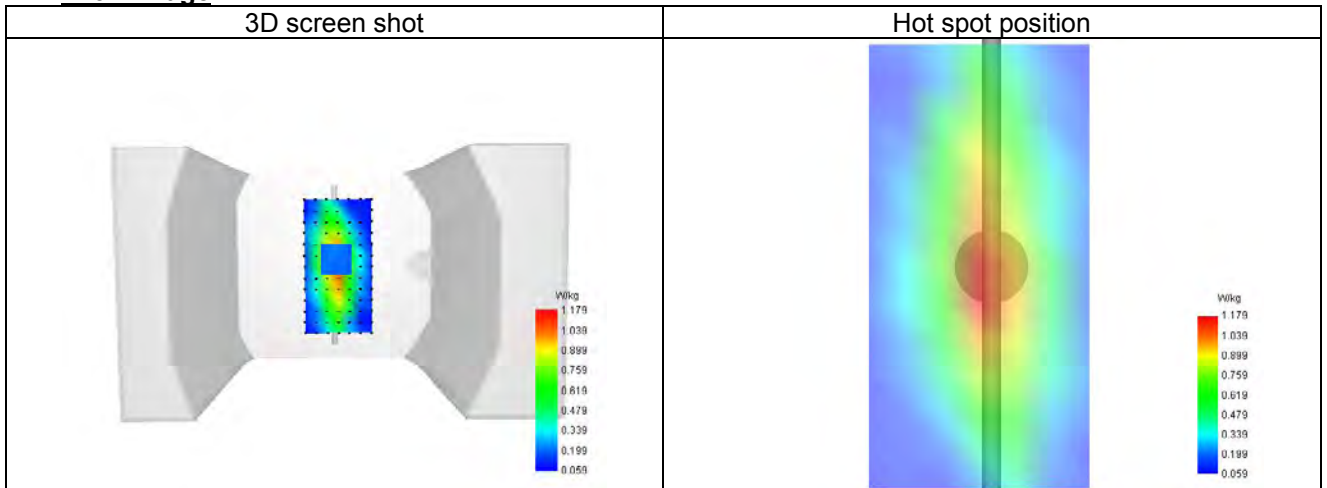
Maximum location: X=-2.00, Y=-9.00 ; SAR Peak: 1.61 W/kg

D. SAR 1g & 10g

| | |
|---|----------|
| SAR 10g (W/Kg) | 0.721 |
| SAR 1g (W/Kg) | 2.190 |
| Variation (%) | -3.244 |
| Horizontal validation criteria: minimum distance (mm) | 0.000000 |
| Vertical validation criteria: SAR ratio M2/M1 (%) | 0.000000 |

E. Z Axis Scan

| | | | | | |
|------------|-------|-------|-------|-------|-------|
| Z (mm) | 0.00 | 4.00 | 9.00 | 14.00 | 19.00 |
| SAR (W/Kg) | 1.603 | 1.163 | 0.769 | 0.506 | 0.333 |


F. 3D Image


System check at 835 MHz

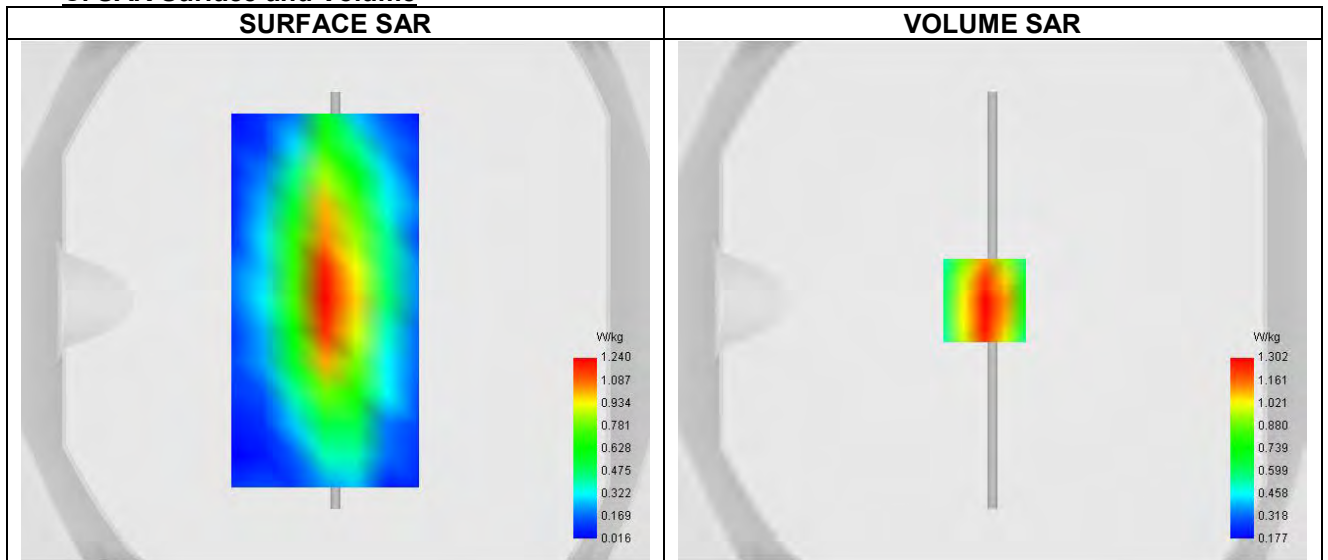
Date of measurement: 5/8/2024

A. Experimental conditions.

| | |
|-----------------|----------------------------|
| Probe | SN 26/23 EPGO420 |
| ConvF | 0.80 |
| Area Scan | surf_sam_plan.txt |
| Zoom Scan | 5x5x7,dx=8mm dy=8mm dz=5mm |
| Phantom | Validation plane |
| Device Position | Dipole |
| Band | CW835 |
| Signal | CW |

B. Permittivity

| | |
|--|---------|
| Frequency (MHz) | 835.000 |
| Relative permittivity (real part) | 40.647 |
| Relative permittivity (imaginary part) | 20.910 |
| Conductivity (S/m) | 0.931 |

C. SAR Surface and Volume


Maximum location: X=-3.00, Y=0.00 ; SAR Peak: 2.06 W/kg

D. SAR 1g & 10g

| | |
|---|----------|
| SAR 10g (W/Kg) | 1.071 |
| SAR 1g (W/Kg) | 2.487 |
| Variation (%) | 3.630 |
| Horizontal validation criteria: minimum distance (mm) | 0.000000 |
| Vertical validation criteria: SAR ratio M2/M1 (%) | 0.000000 |

E. Z Axis Scan

| | | | | | |
|------------|-------|-------|-------|-------|-------|
| Z (mm) | 0.00 | 4.00 | 9.00 | 14.00 | 19.00 |
| SAR (W/Kg) | 2.036 | 1.302 | 0.747 | 0.462 | 0.331 |