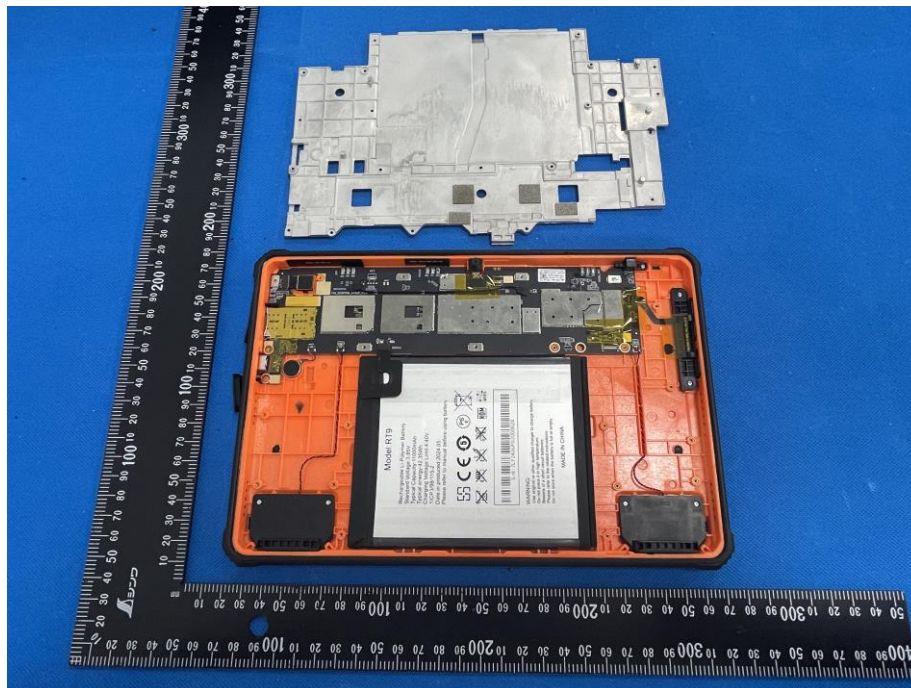
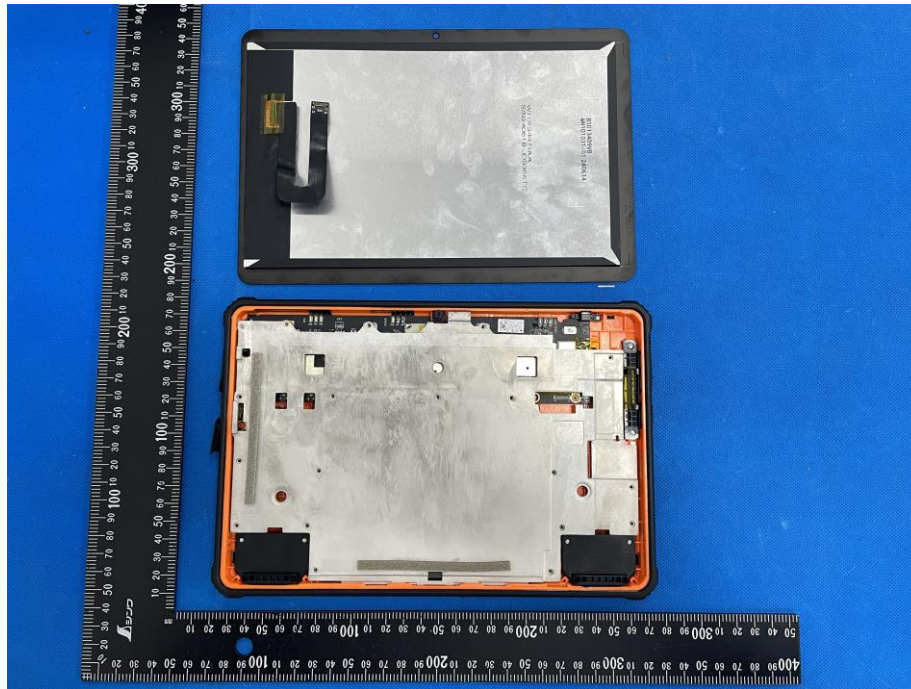




BCTC

### Internal Photos

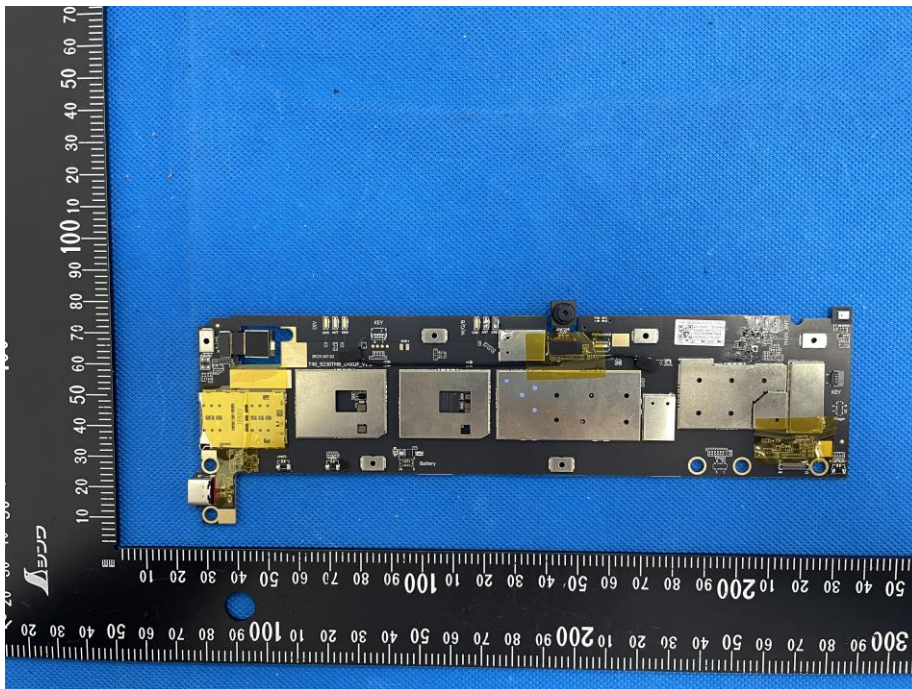
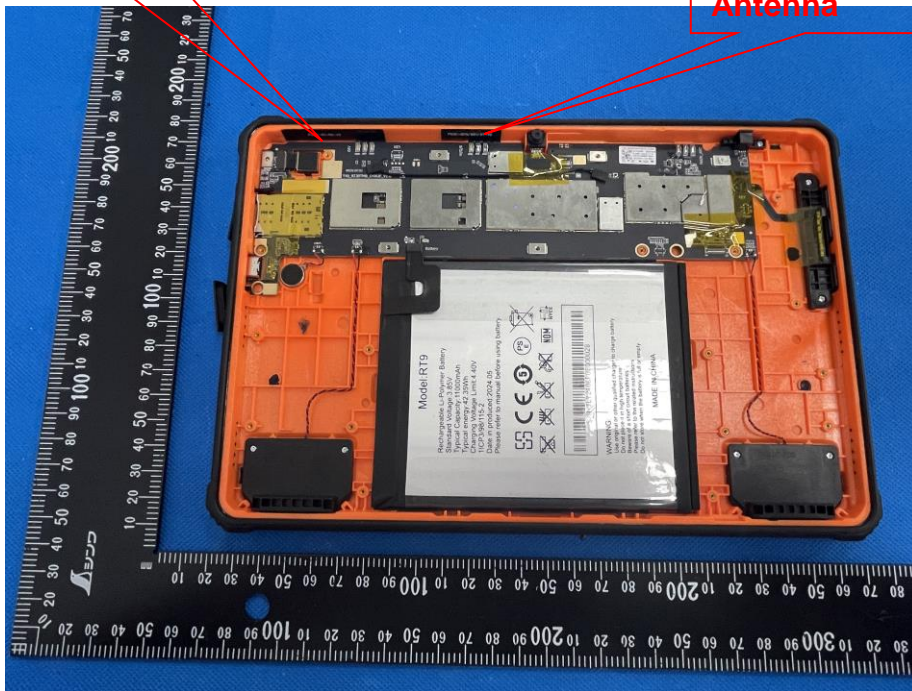


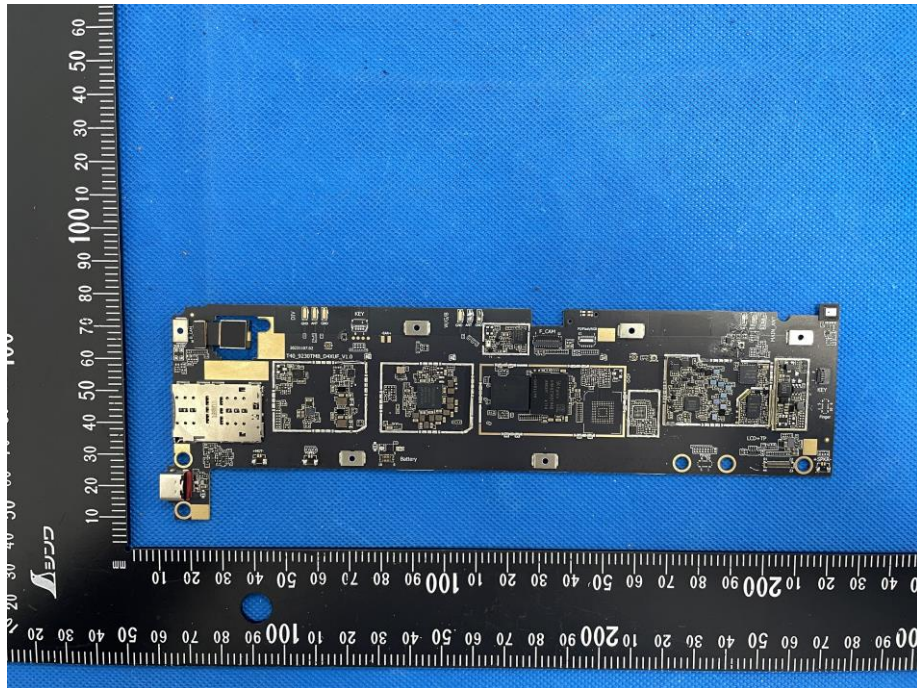
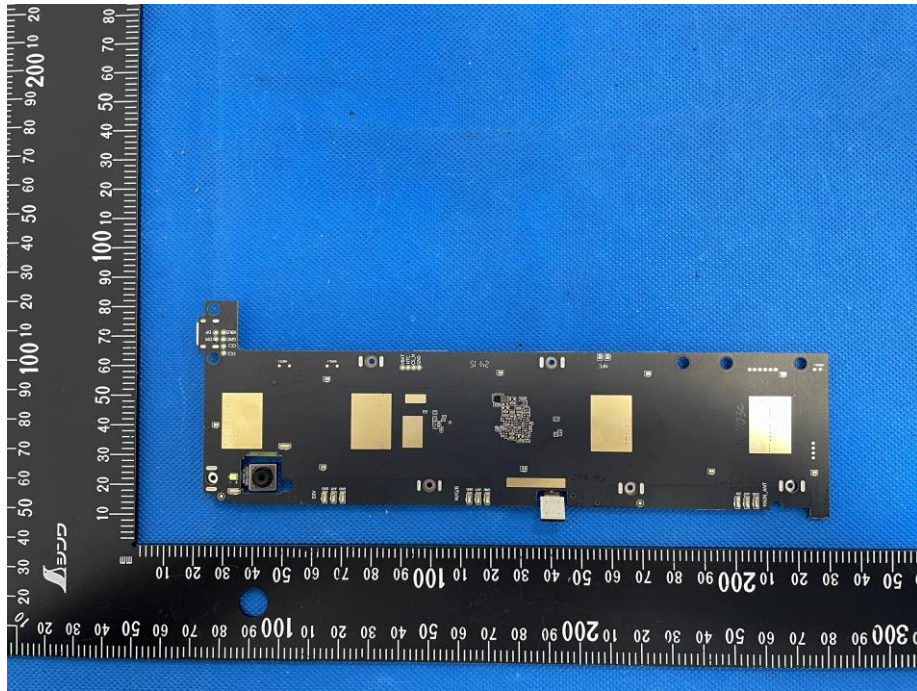


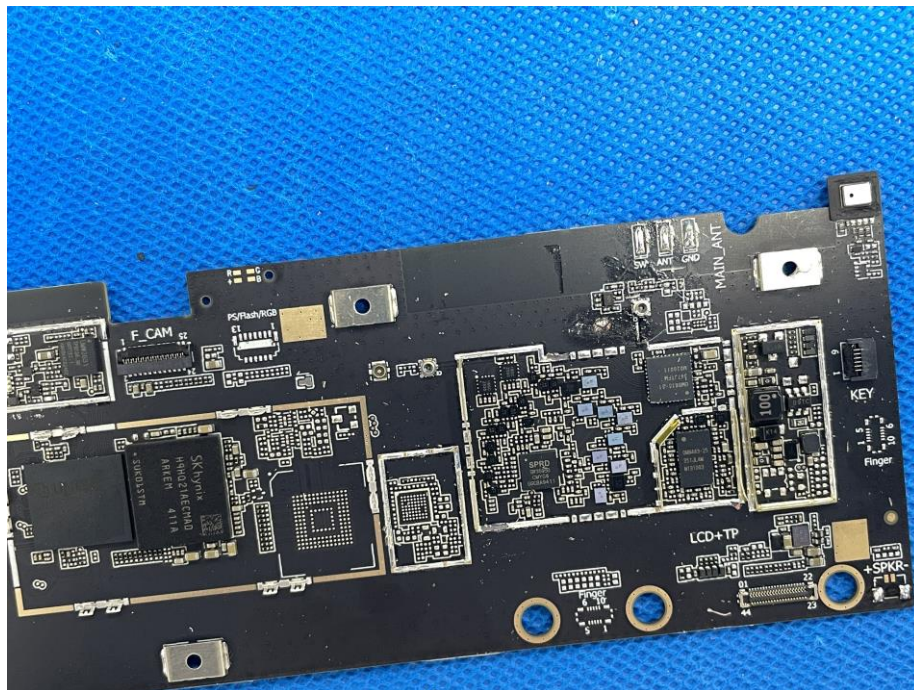
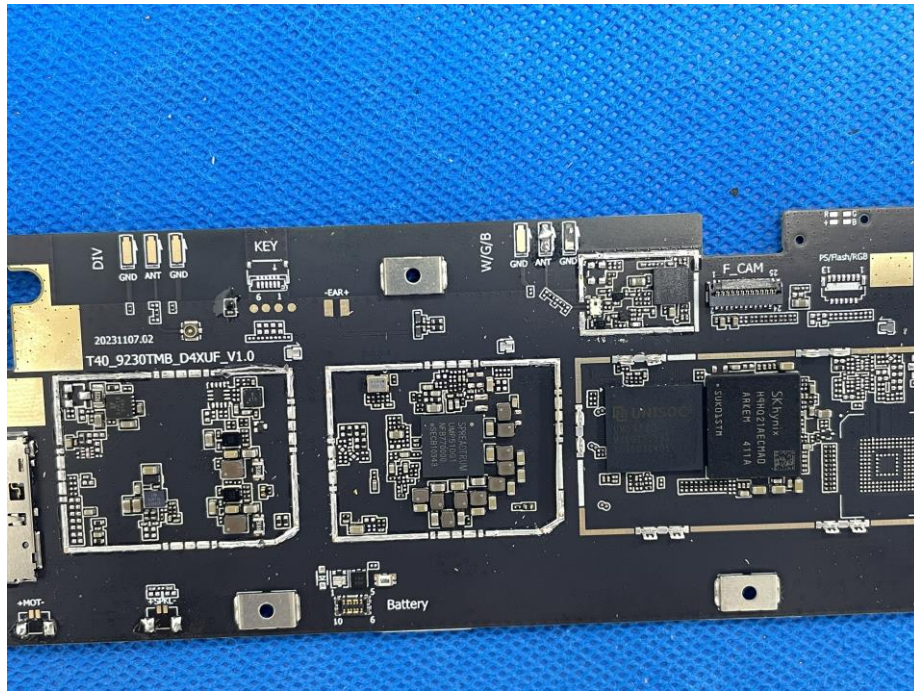
**BCTC**

**2G/3G/4G  
Antenna**

**BT/WIFI/GPS  
Antenna**







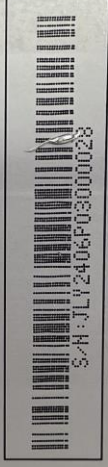
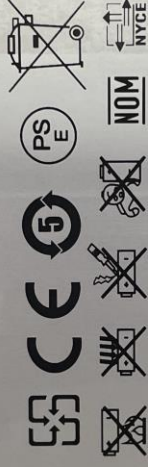


# BCTC

## Model:RT9

Rechargeable Li-Polymer Battery  
 Standard Voltage:3.85V  
 Typical Capacity:11000mAh  
 Typical energy:42.35Wh  
 Charging Voltage Limit:4.40V  
 11CP3/98/115-2

Date in produced:2024.05  
 Please refer to manual before using battery.



**WARNING:**  
 Use original or other qualified charger to charge battery  
 Do not place it in high temperature  
 Beware of a short circuit batteries  
 Please refer to the related instructions  
 Do not store when the battery is full or empty

MADE IN CHINA