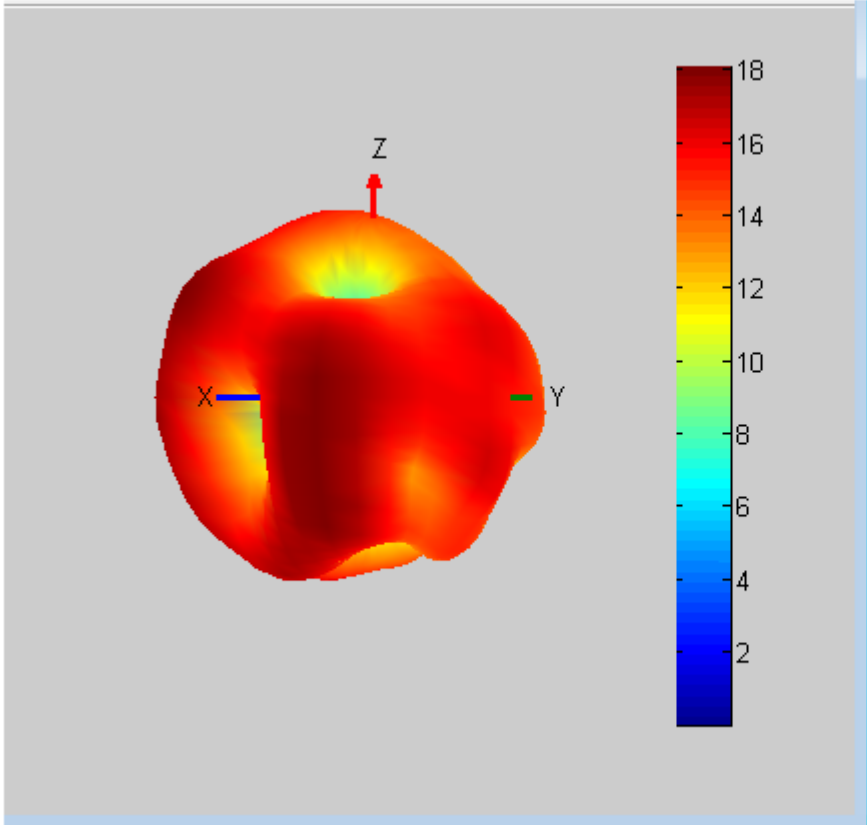


主天线无源参数:

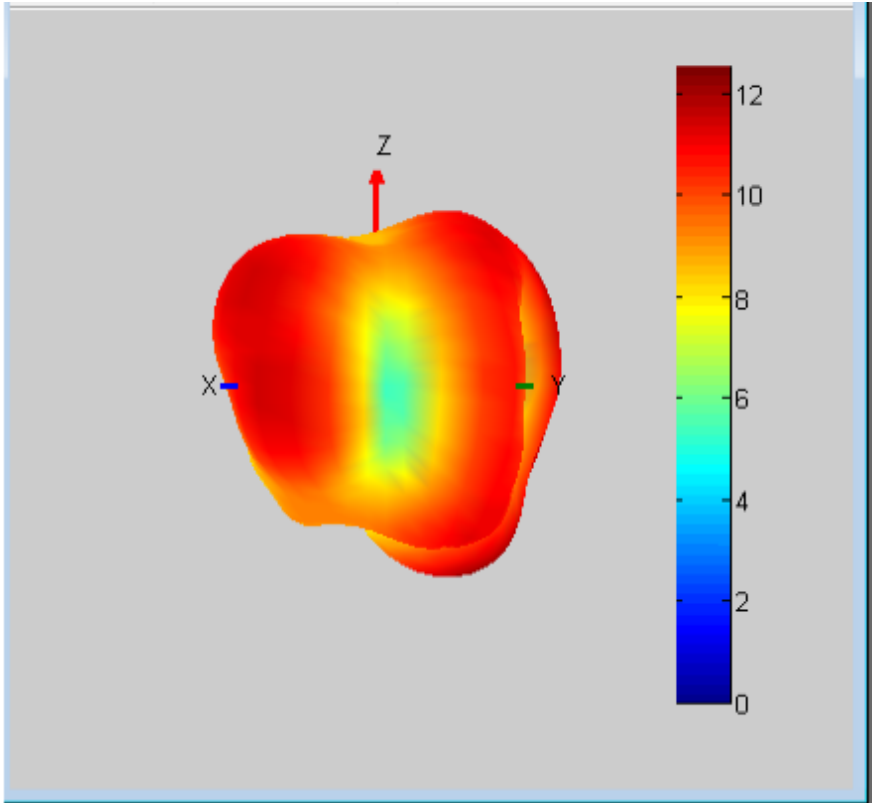
工作频段(Working frequency band): 699~960MHZ, 1710~2700MHZ

| | |
|---------|------------------|
| 2G | 2/3/5/8 |
| 3G | 2/4/5 |
| 4G | 2/4/5/7/12/17/28 |
| BT/WIFI | 2.4G+5G |
| GPS | 1575.42MHz |
| 5G | N77/N78 |

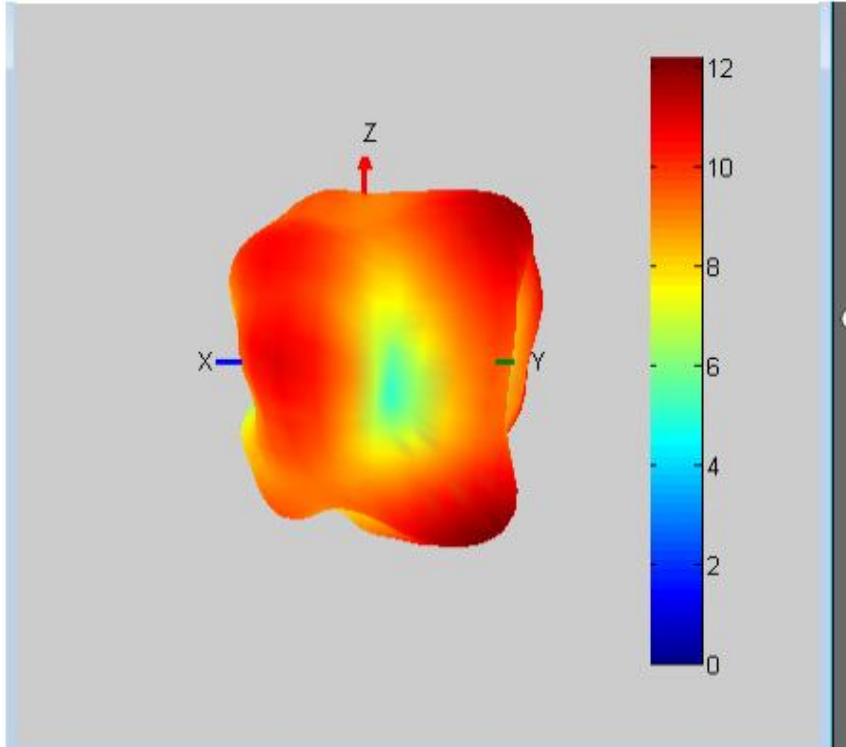
| Gain | | |
|-------------------------|---------|---------|
| 频段 Band | 增益(dBi) | gain |
| LTE-B12/B17/B28 | -2.24 | 720MHZ |
| GSM850,WCDMA-B5,LTE-B5 | -0.5 | 820MHZ |
| GSM900 | 1 | 960MHZ |
| DCS1800,LTE-B4,WCDMA-B4 | -0.41 | 1720MHZ |
| PCS1900,WCDMA-B2,LTE-B2 | 0.15 | 1980MHZ |
| LTE-B7 | 2.14 | 2680MHZ |
| GPS | 1.1 | 1575MHZ |
| 2.4G WIFI/BT | 2.2 | 2450MHZ |
| 5G WIFI | 2.5 | 5300MHZ |
| N77 | -5.1 | 3700MHZ |
| N78 | -4.5 | 3500MHZ |



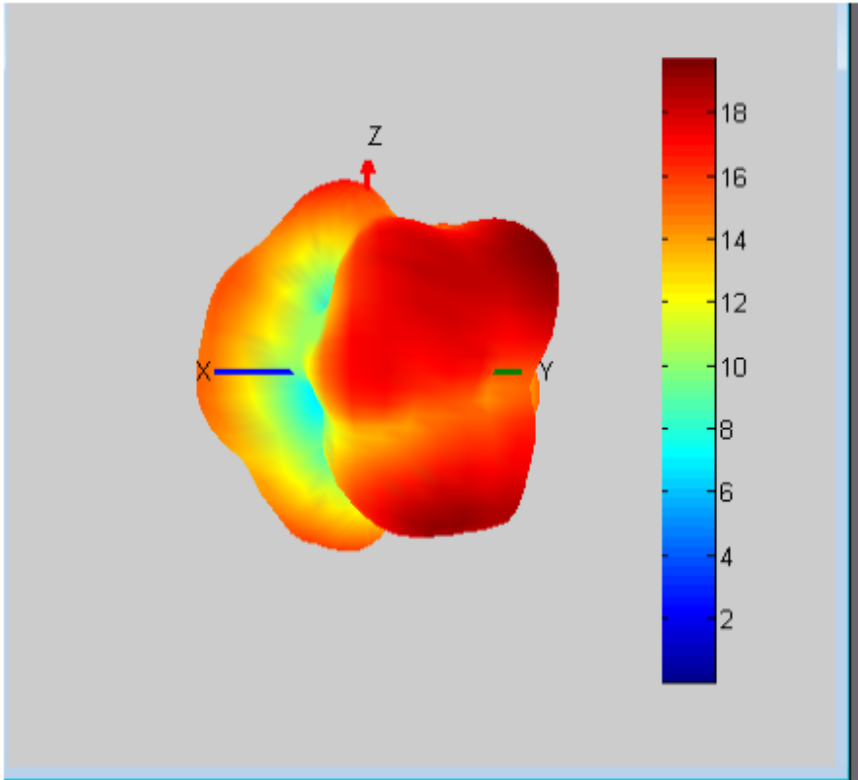
Ite:b12/b17/b28



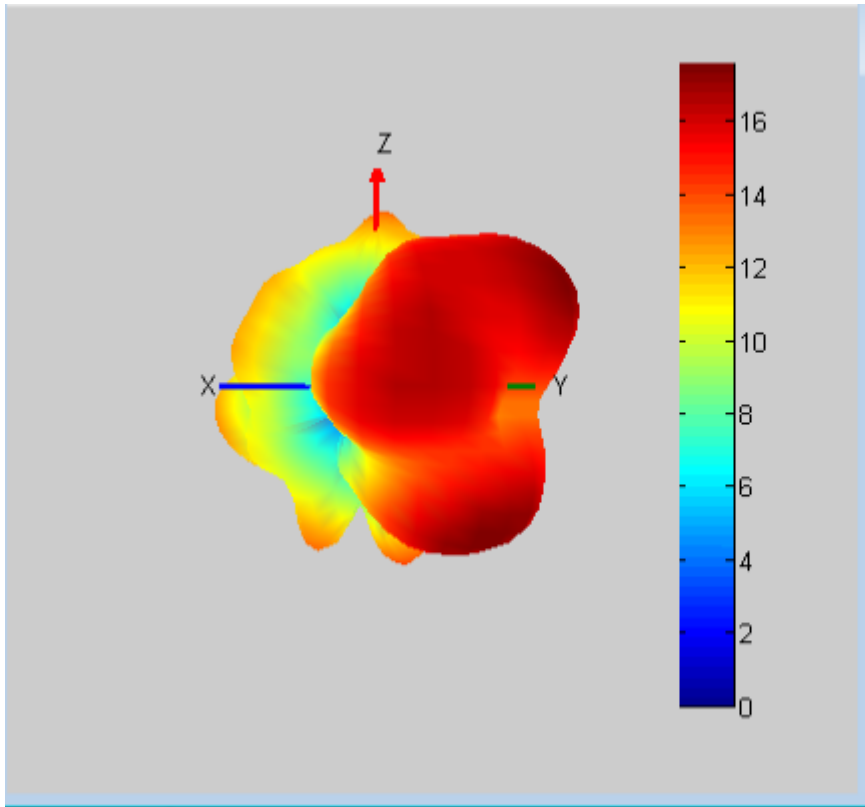
GSM: B5
WCDMA: B5
LTE: B5



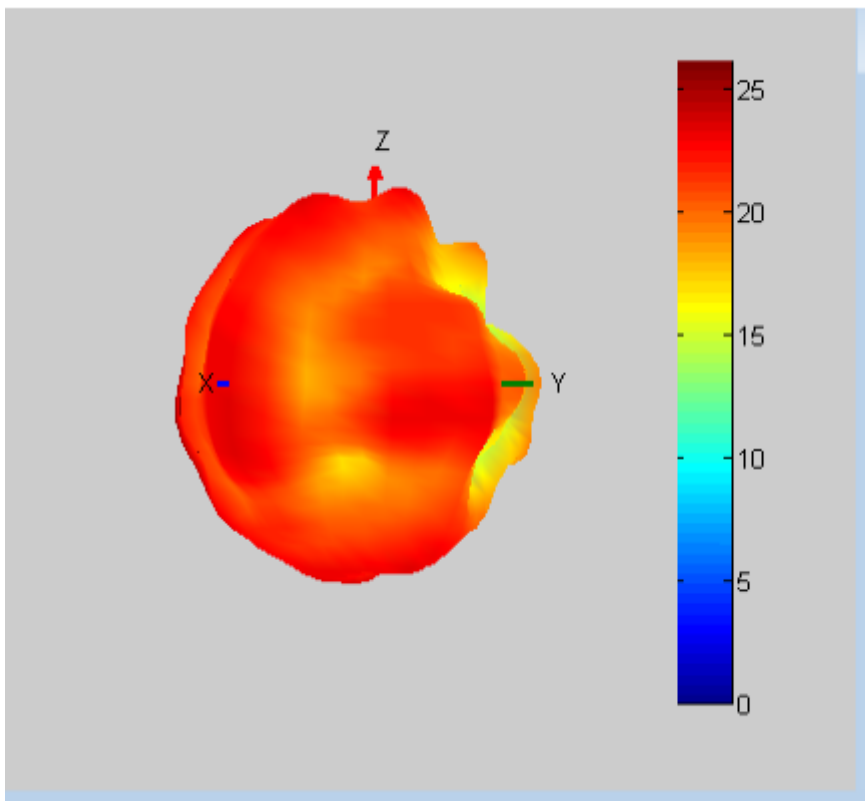
GSM: B8



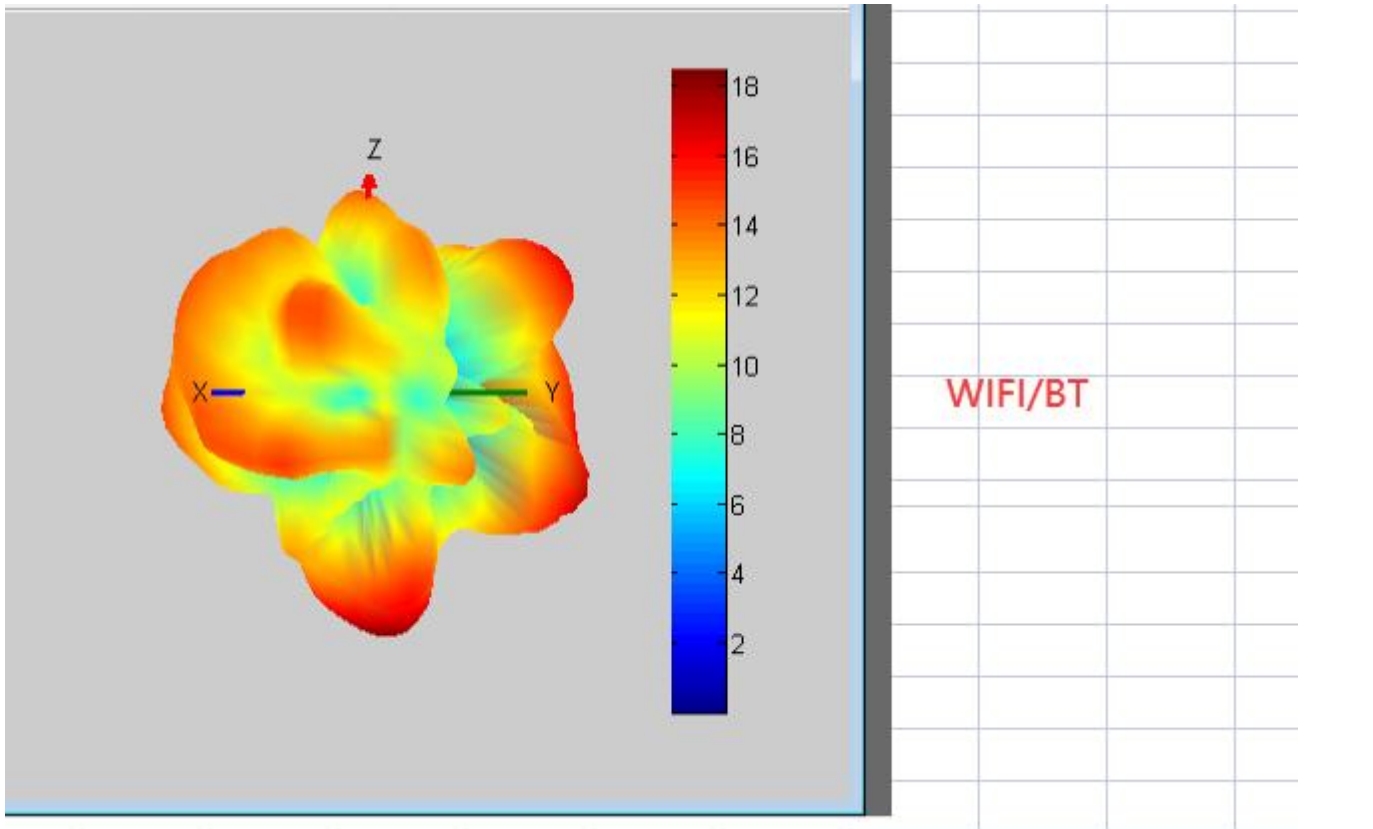
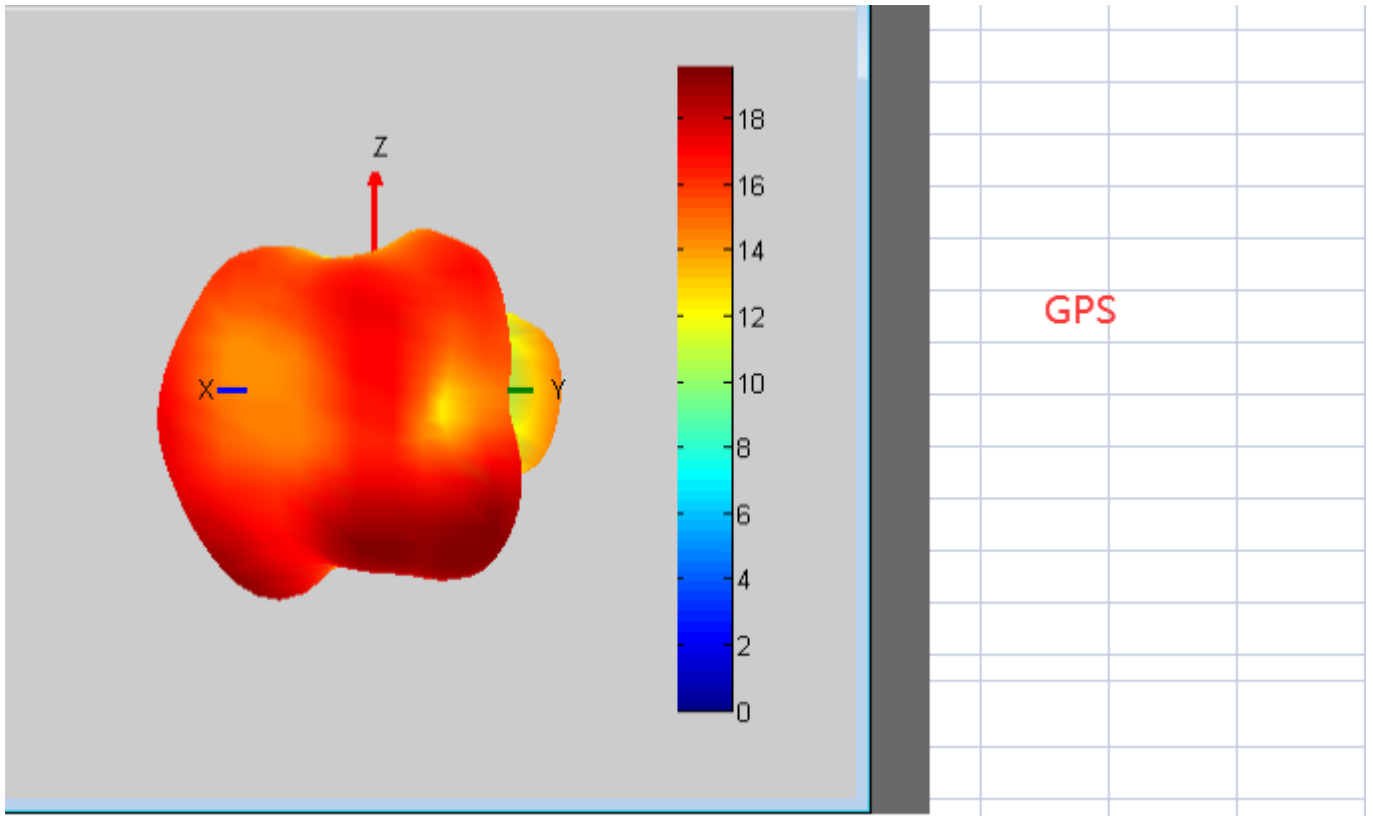
GSM:B3
WCDMA:B4
LTE:B4

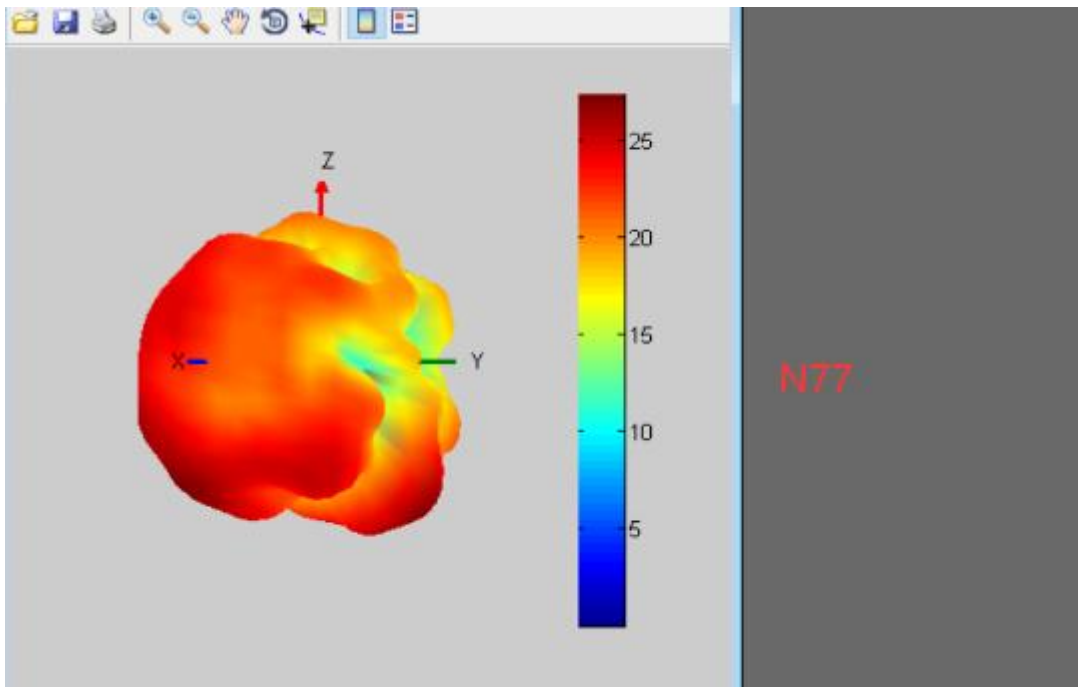
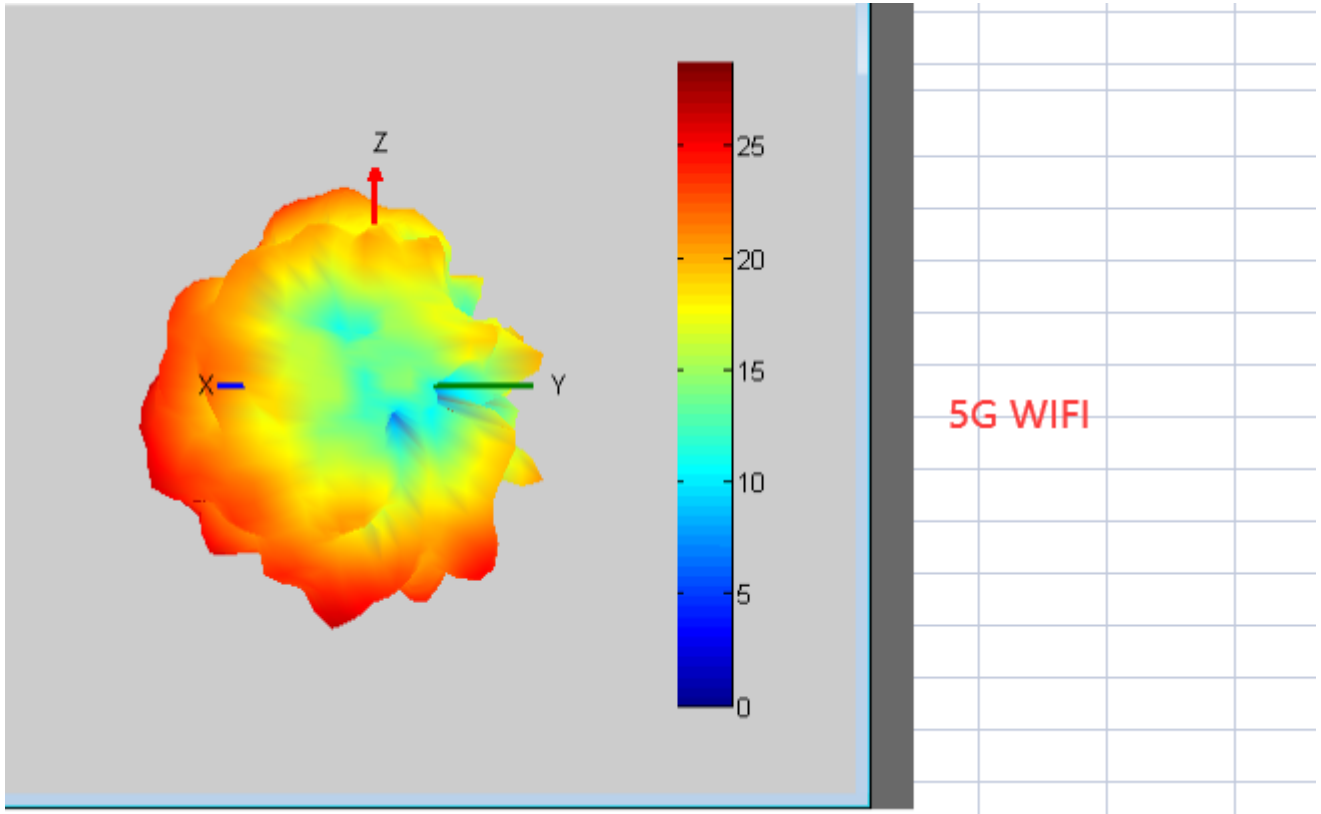


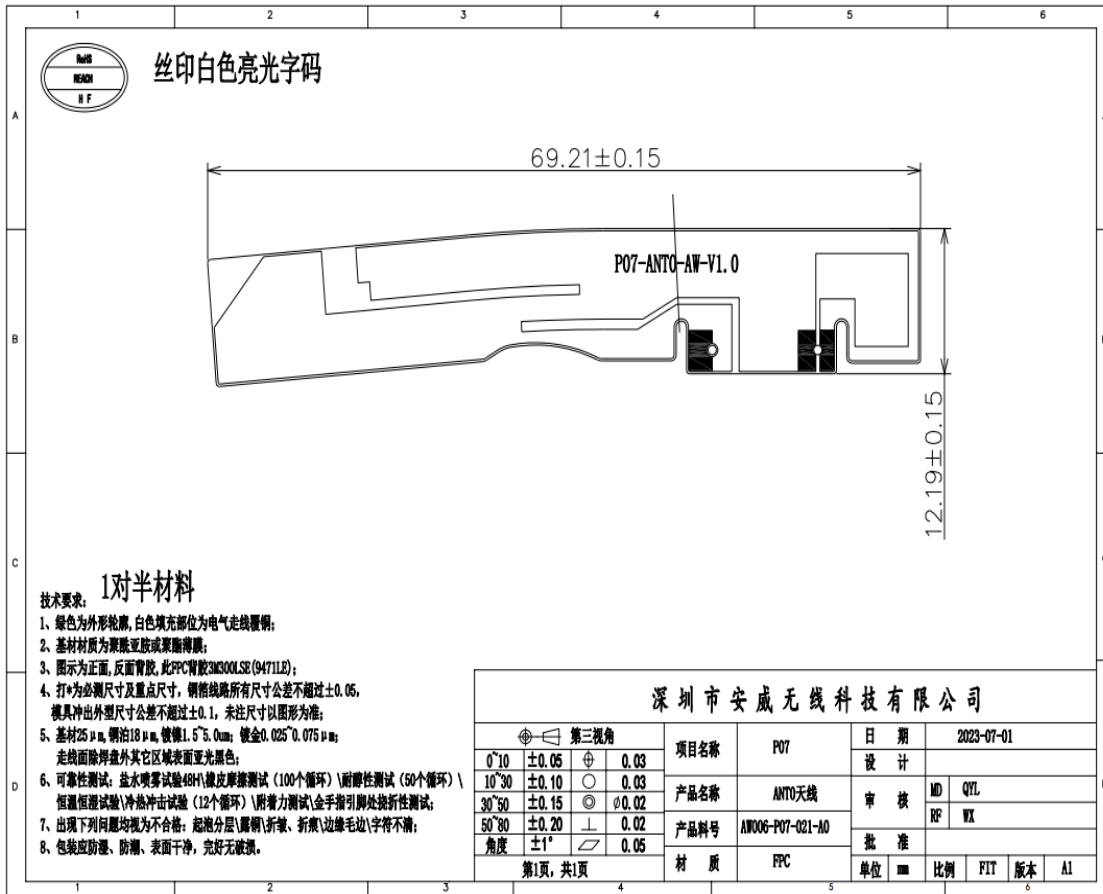
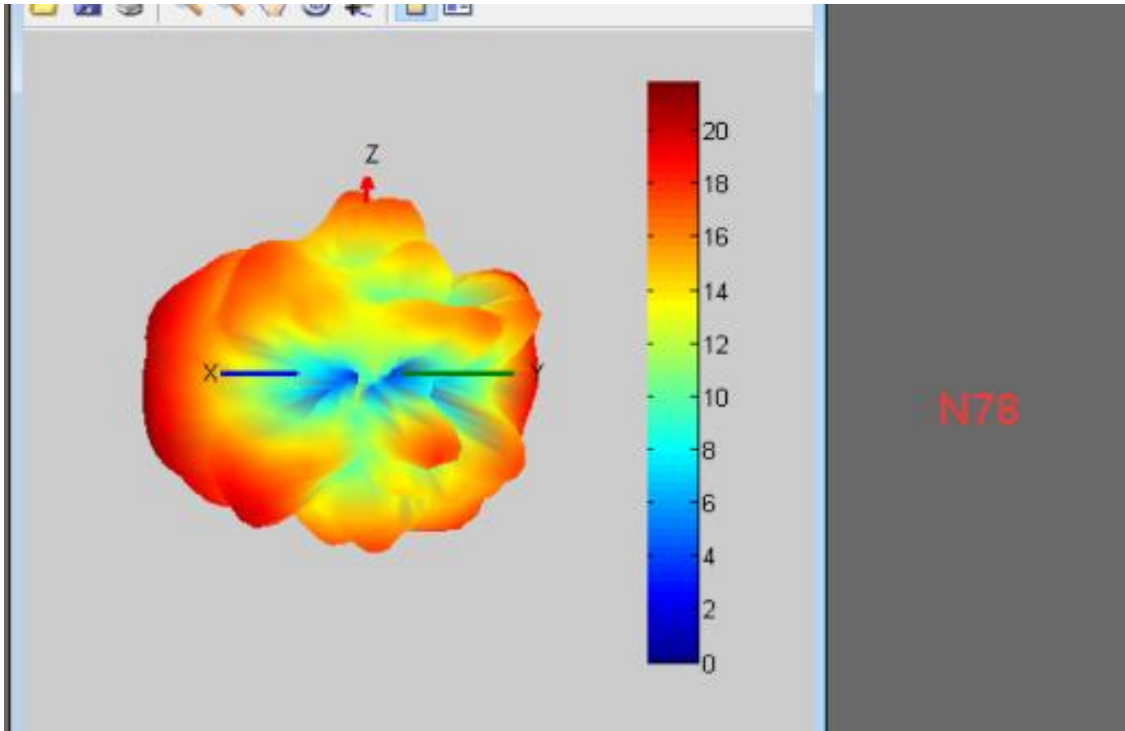
GSM: B2
WCDMA: B2
LTE: B2

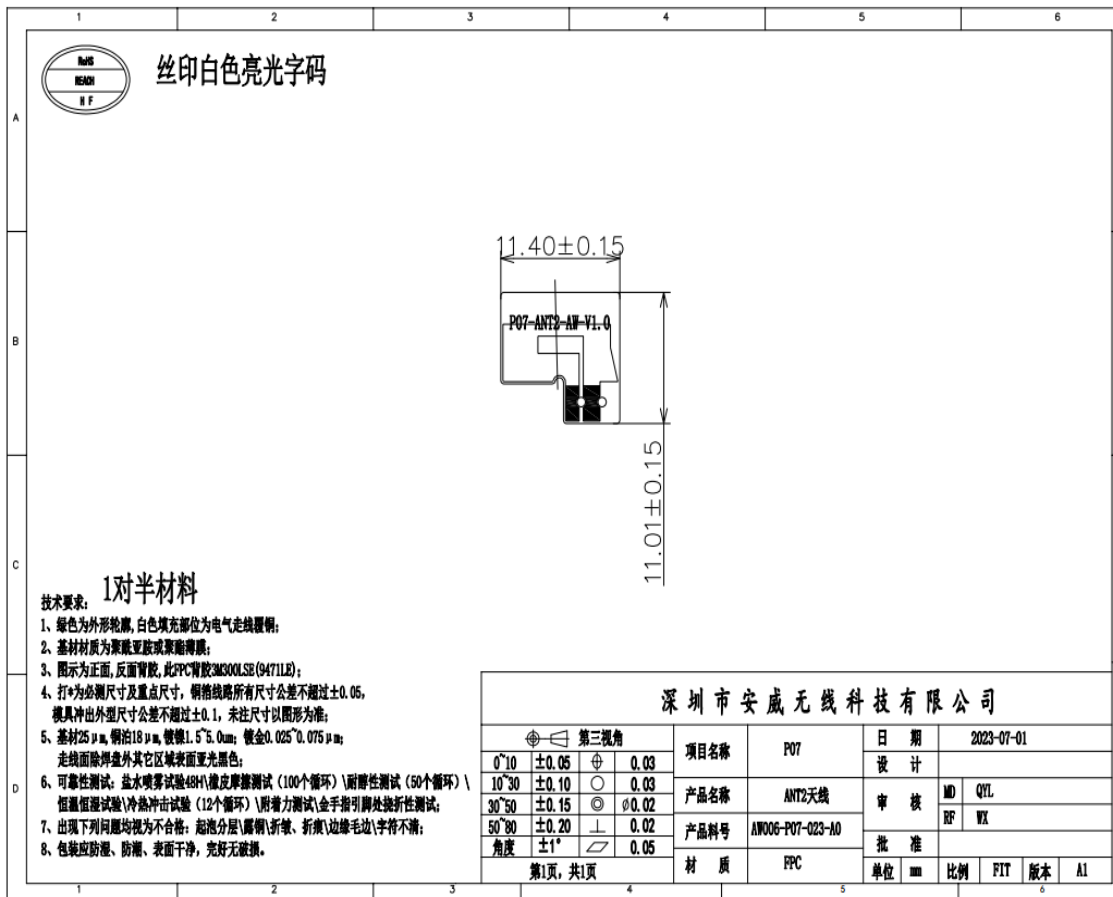
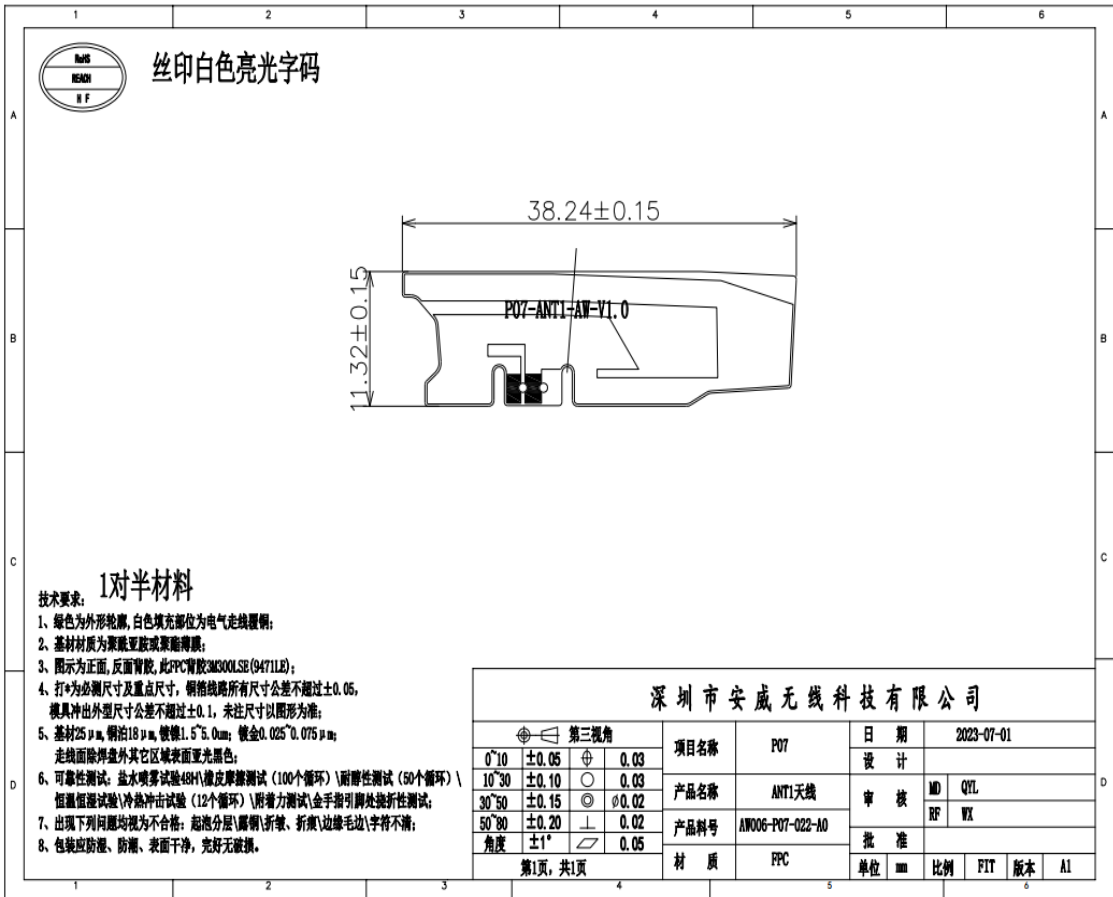


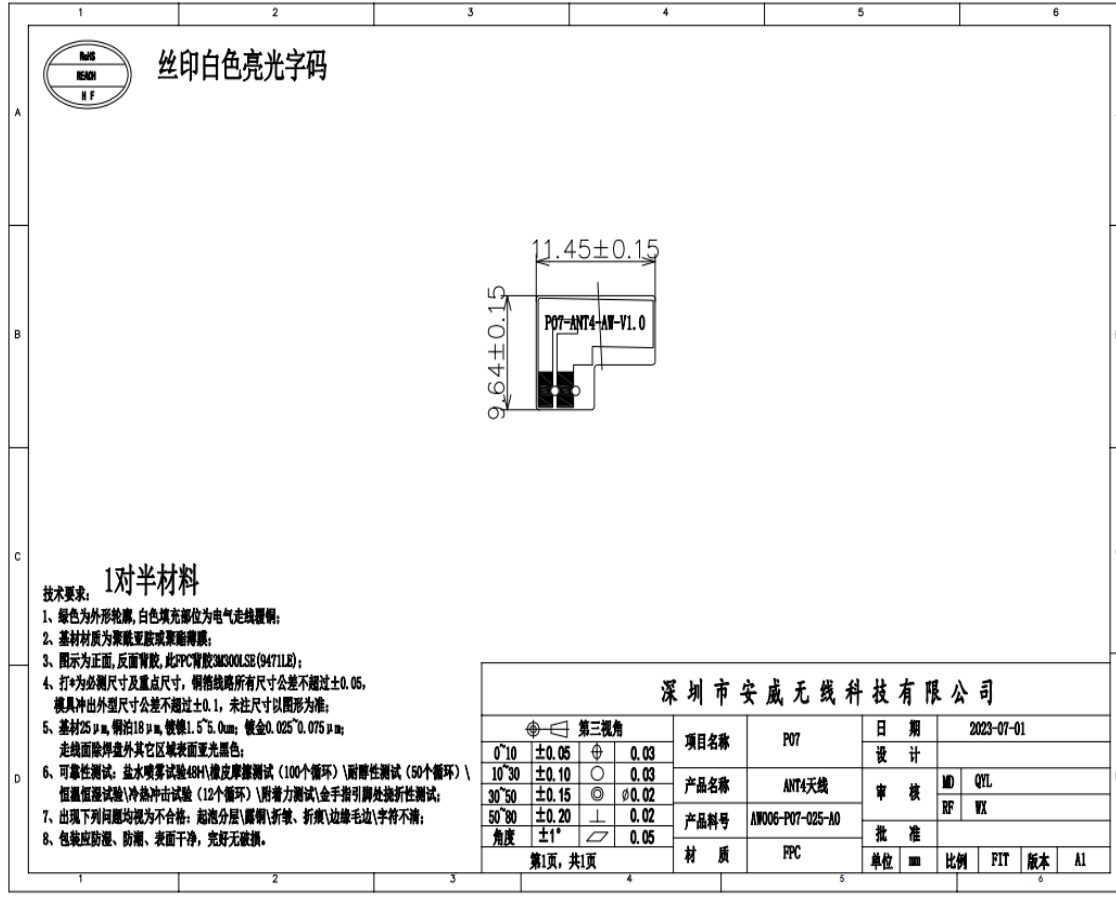
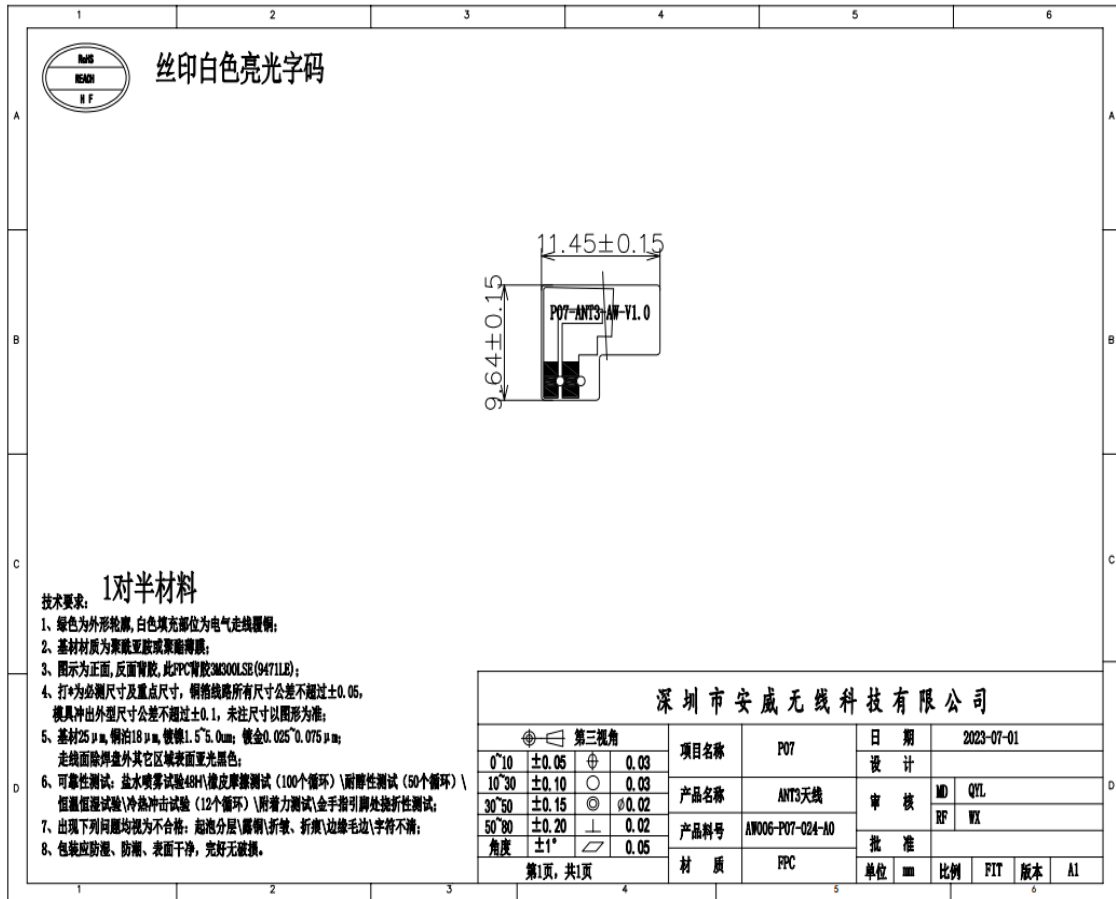
LTE: B7

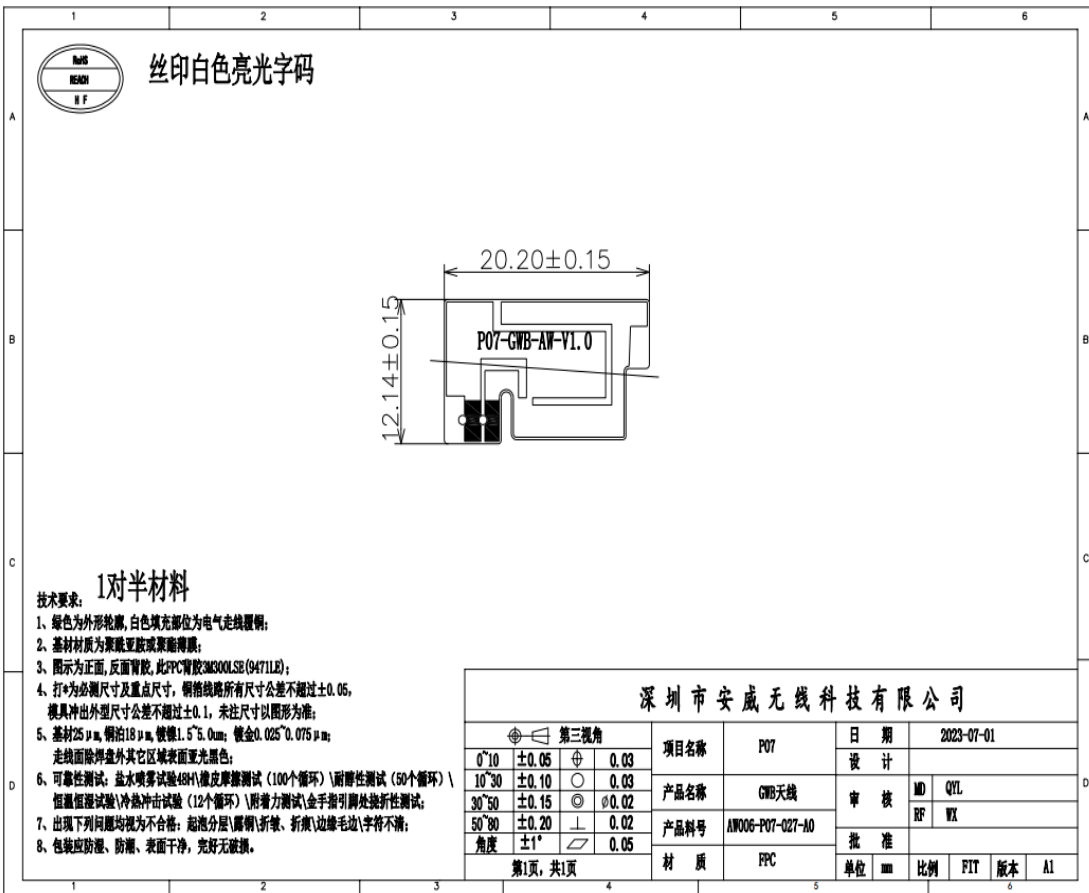
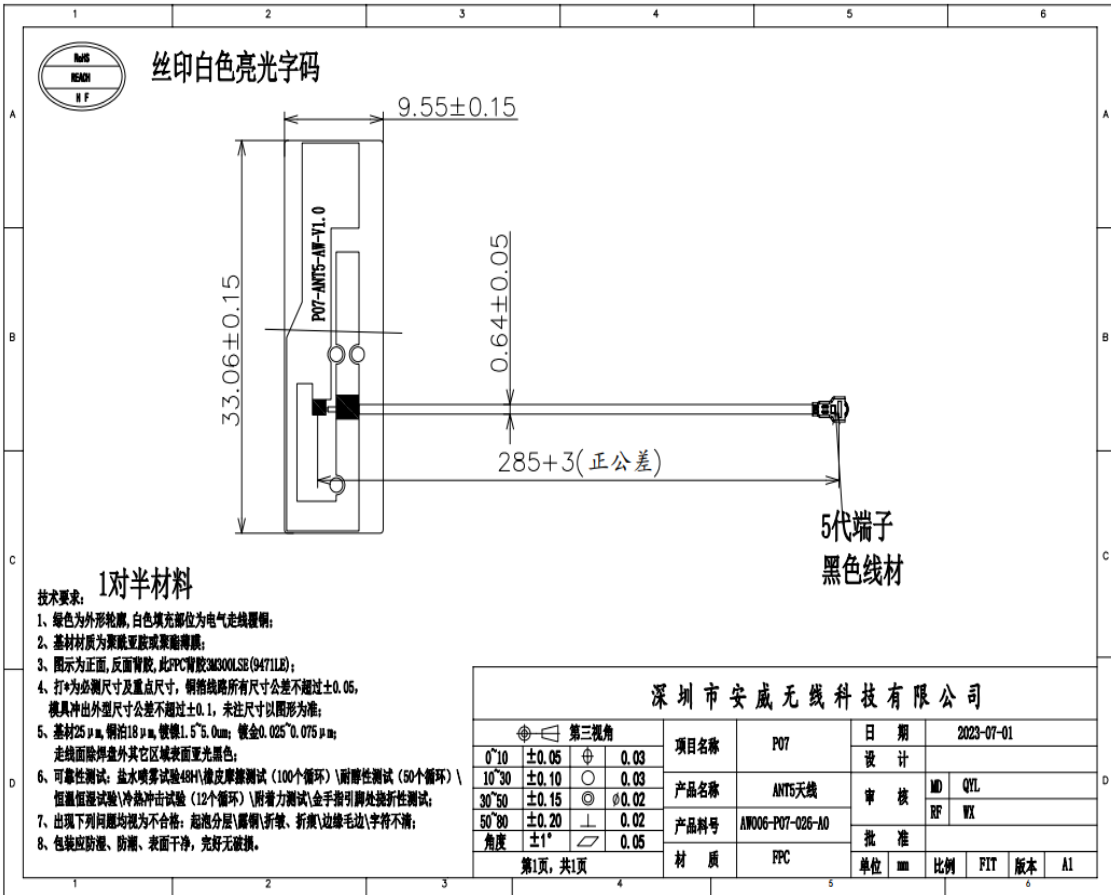












建议与结论

此报告是根据客户提供手机测得的天线电器性能,请贵公司认真查阅。

安威与您携手共进 共创未来

Join Hands To Create The Future