

15.2 SAR Test Graph Results

SAR plots for the highest measured SAR in each exposure configuration, wireless mode and frequency band combination according to FCC KDB 865664 D02

Plot 1

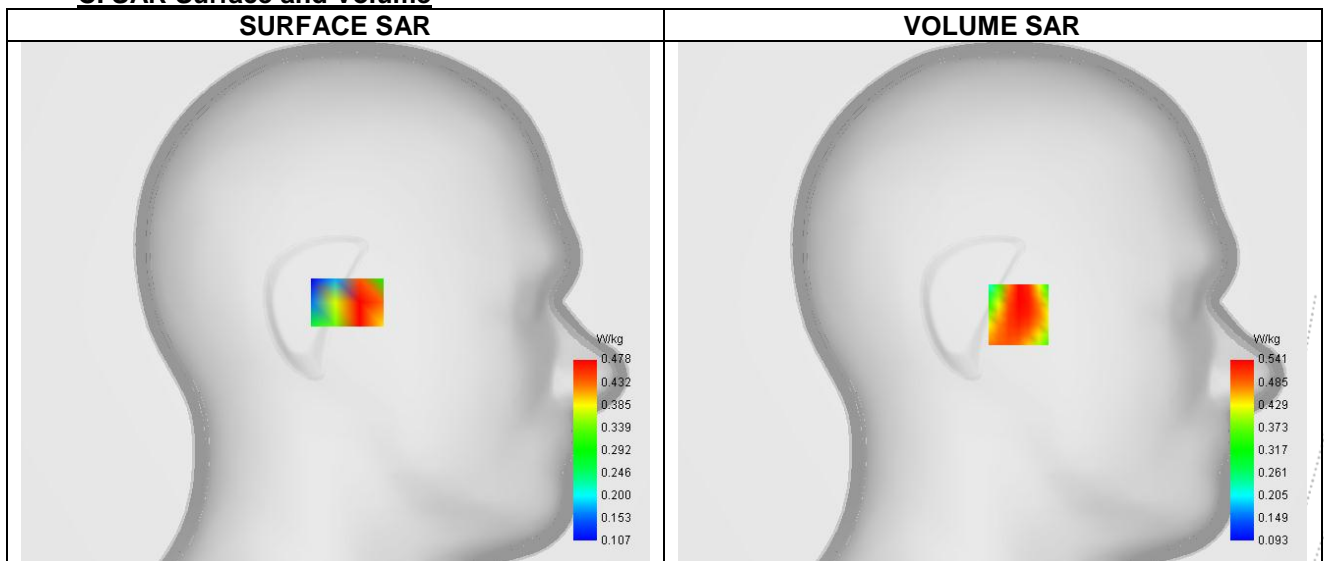
A. Experimental conditions.

Probe	SN 26/23 EPGO420
ConvF	0.81
Area Scan	dx=12mm dy=12mm, Adaptative 1 max
Zoom Scan	7x7x7,dx=5mm dy=5mm dz=5mm
Phantom	Left head
Device Position	Cheek
Band	GSM850
Channels	Higher (251)
Signal	TDMA (Crest factor: 8.0)

B. Permittivity

Frequency (MHz)	848.800
Relative permittivity (real part)	42.930
Relative permittivity (imaginary part)	19.340
Conductivity (S/m)	0.920

C. SAR Surface and Volume



Maximum location: X=-36.00, Y=-12.00 ; SAR Peak: 0.52 W/kg

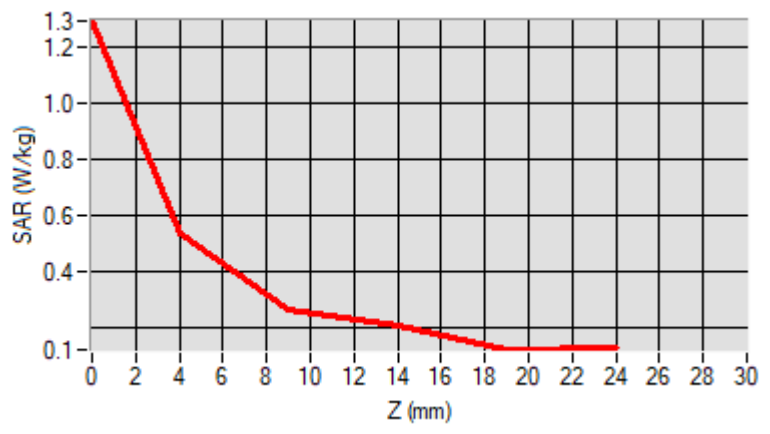
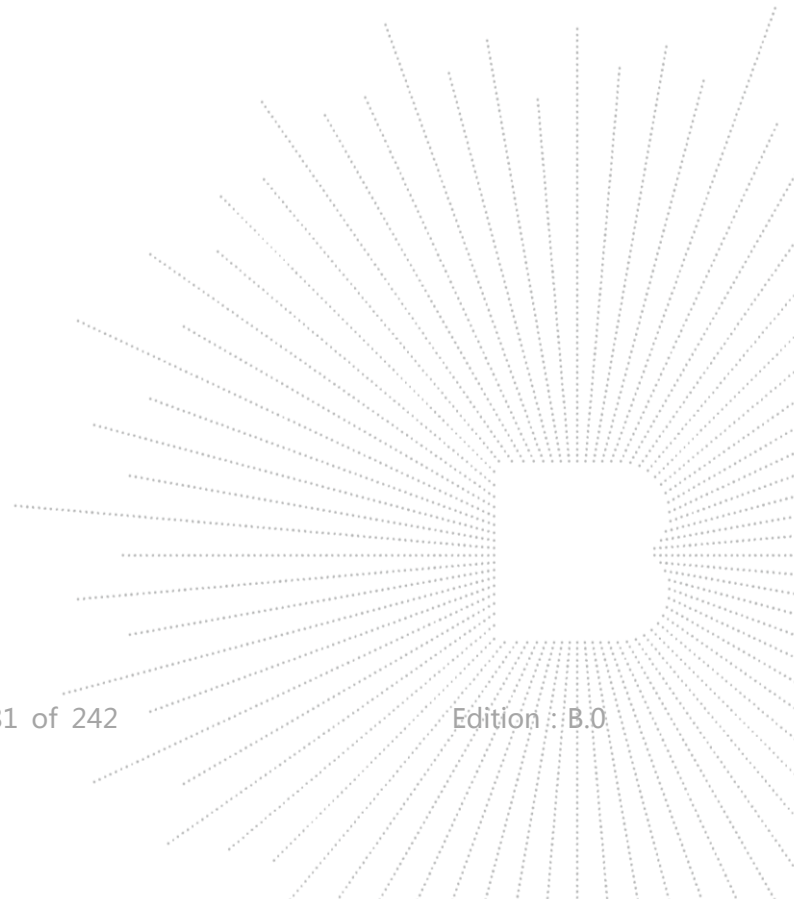
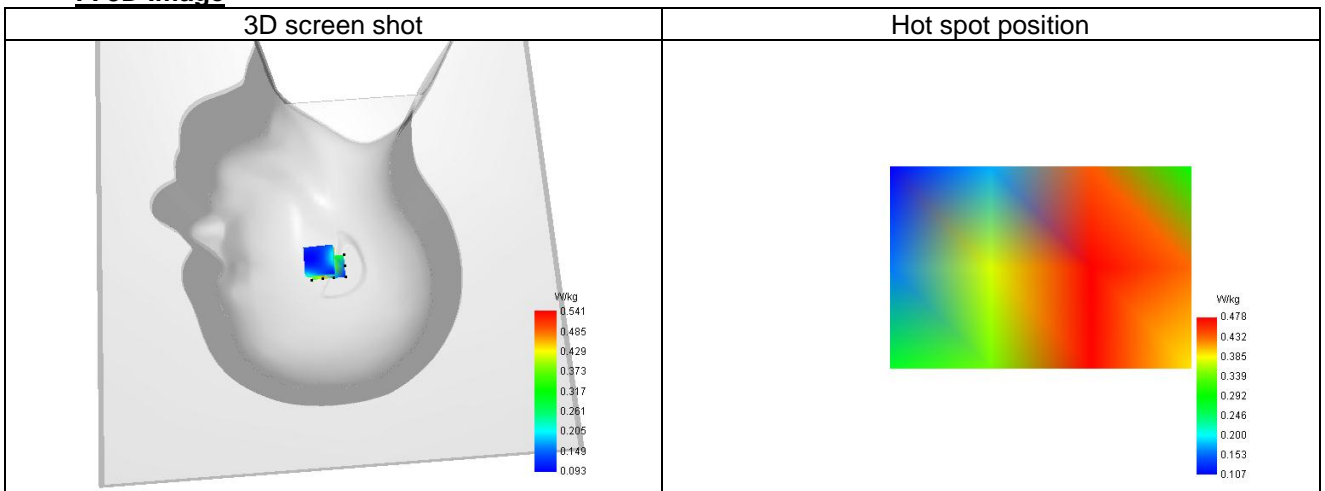
D. SAR 1g & 10g

SAR 10g (W/Kg)	0.133
SAR 1g (W/Kg)	0.324
Variation (%)	-0.317
Horizontal validation criteria: minimum distance (mm)	0.000000
Vertical validation criteria: SAR ratio M2/M1 (%)	0.000000

E. Z Axis Scan

Z (mm)	0.00	4.00	9.00	14.00	19.00
--------	------	------	------	-------	-------

SAR (W/Kg)	0.815	0.326	0.244	0.242	0.164
------------	-------	-------	-------	-------	-------


F. 3D Image


Plot 2

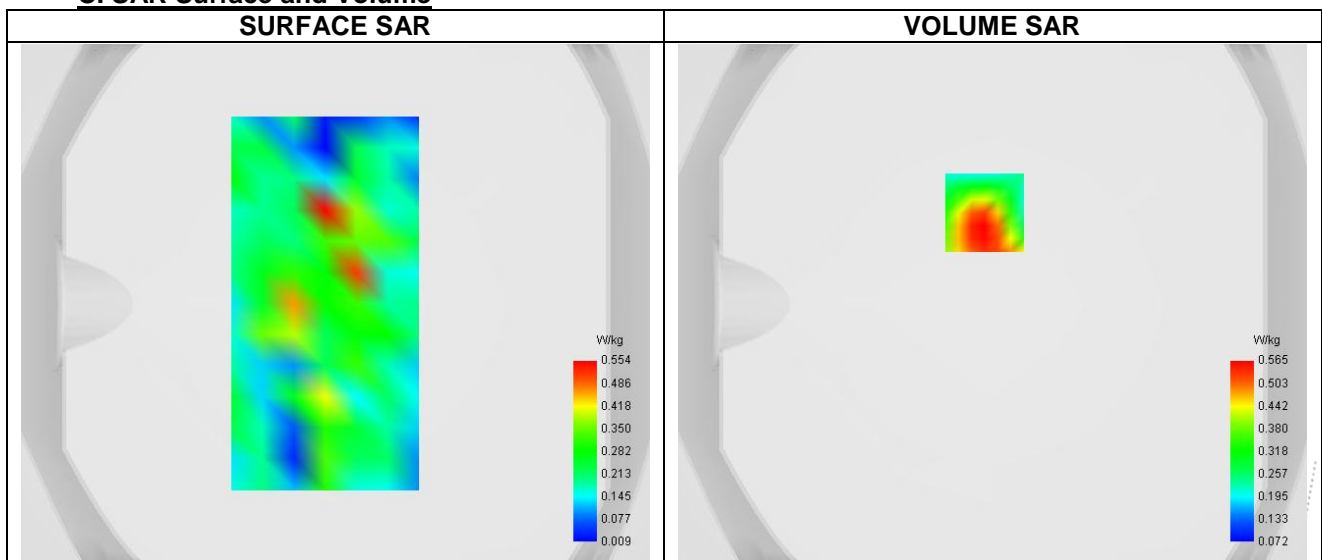
A. Experimental conditions.

Probe	SN 26/23 EPGO420
ConvF	0.81
Area Scan	surf_sam_plan.txt
Zoom Scan	7x7x7,dx=5mm dy=5mm dz=5mm
Phantom	Validation plane
Device Position	Body
Band	GPRS850_1TX
Channels	Lower (128)
Signal	Custom (Crest factor: 4.0)

B. Permittivity

Frequency (MHz)	824.200
Relative permittivity (real part)	42.930
Relative permittivity (imaginary part)	19.340
Conductivity (S/m)	0.920

C. SAR Surface and Volume

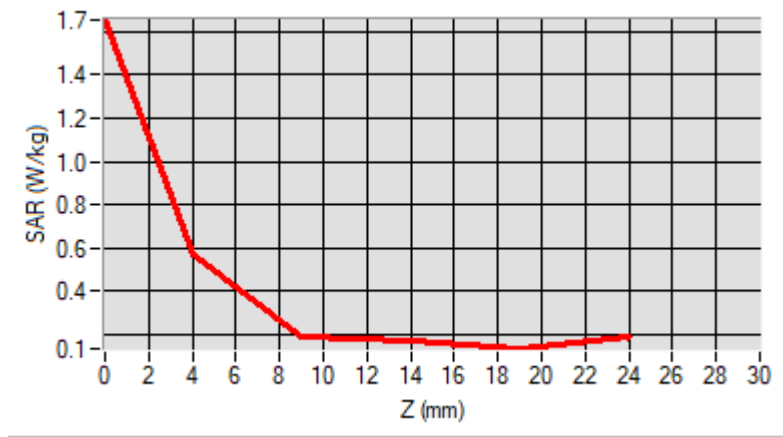
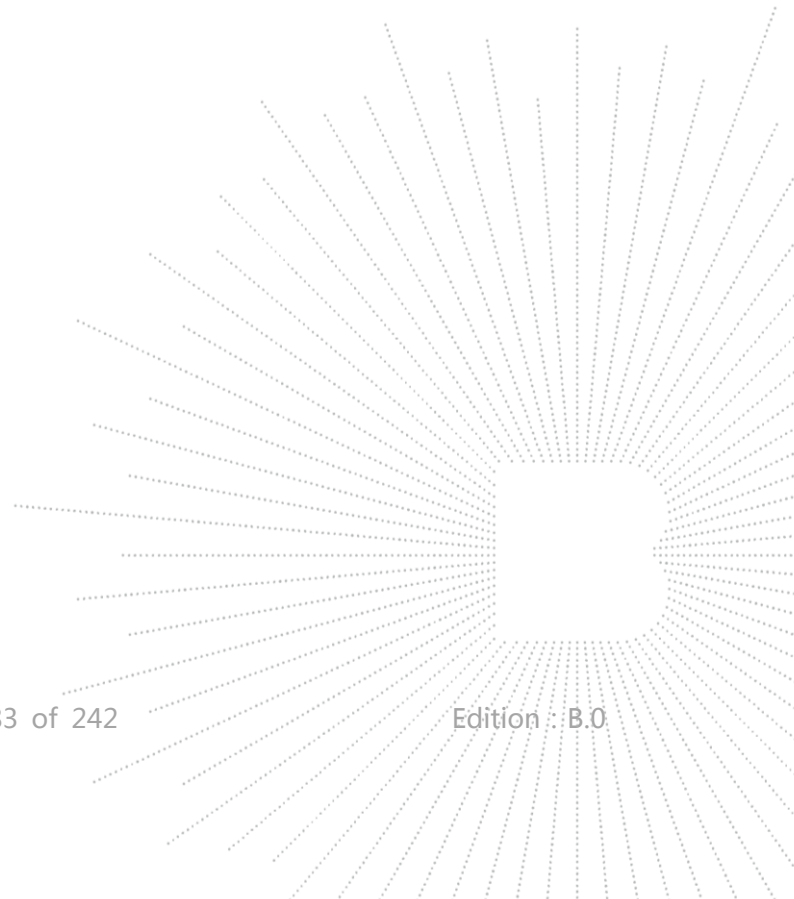
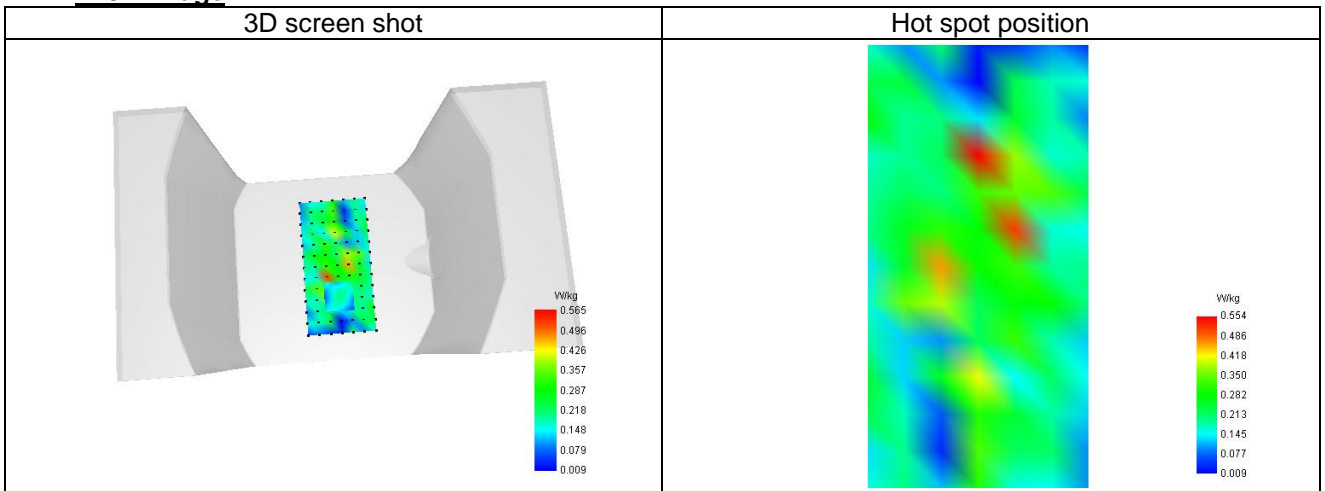


D. SAR 1g & 10g

SAR 10g (W/Kg)	0.207
SAR 1g (W/Kg)	0.396
Variation (%)	1.902
Horizontal validation criteria: minimum distance (mm)	0.000000
Vertical validation criteria: SAR ratio M2/M1 (%)	0.000000

E. Z Axis Scan

Z (mm)	0.00	4.00	9.00	14.00	19.00
SAR (W/Kg)	0.681	0.517	0.341	0.200	0.096


F. 3D Image


Plot 3

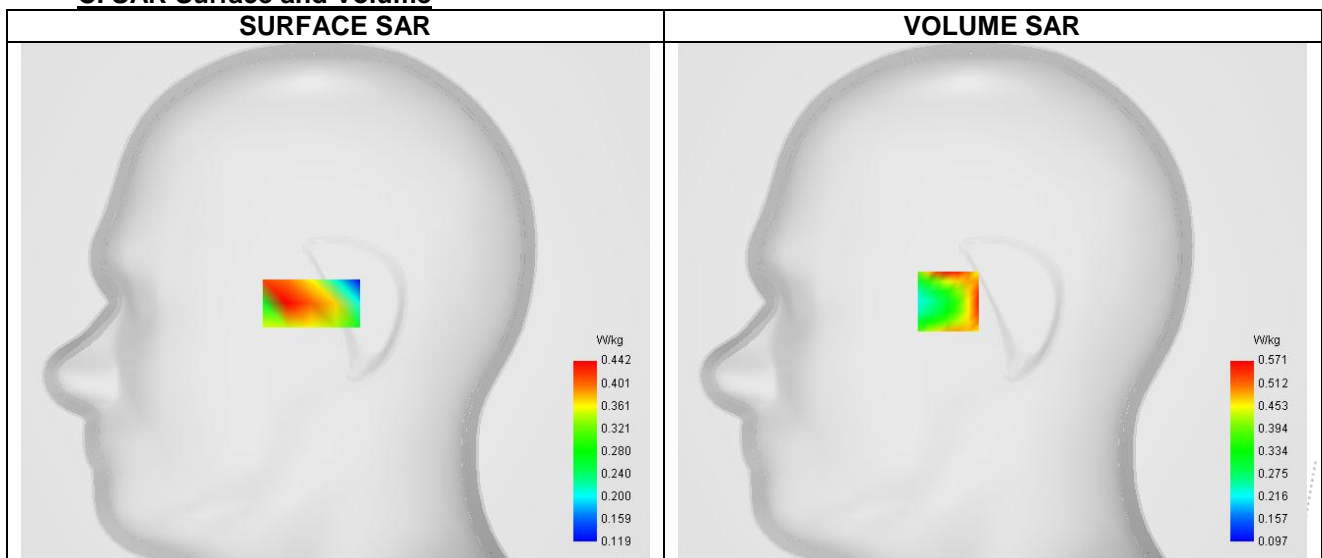
A. Experimental conditions.

Probe	SN 26/23 EPGO420
ConvF	1.04
Area Scan	dx=12mm dy=12mm, Adaptive 1 max
Zoom Scan	7x7x7, dx=5mm dy=5mm dz=5mm
Phantom	Right head
Device Position	Cheek
Band	GSM1900
Channels	Middle (661)
Signal	TDMA (Crest factor: 8.0)

B. Permittivity

Frequency (MHz)	1880.000
Relative permittivity (real part)	39.943
Relative permittivity (imaginary part)	13.408
Conductivity (S/m)	1.365

C. SAR Surface and Volume



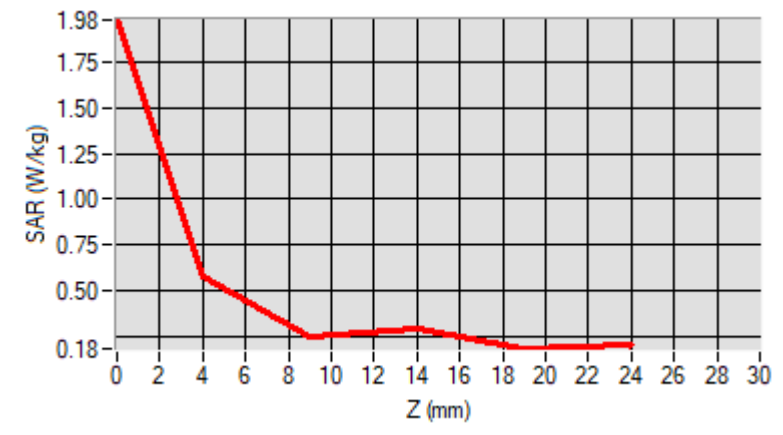
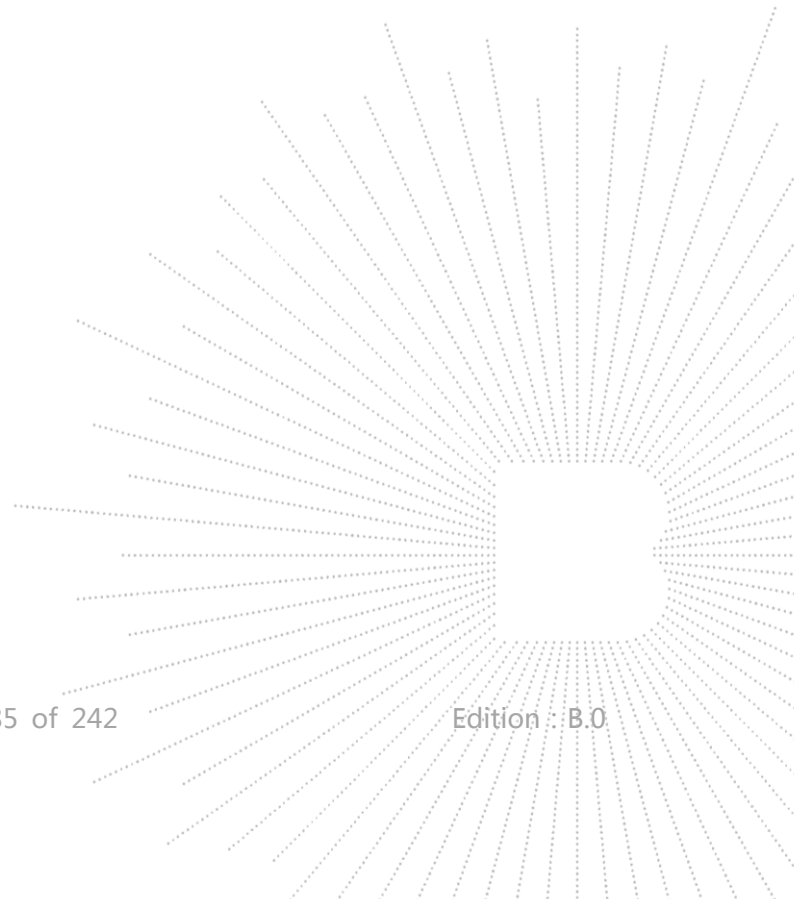
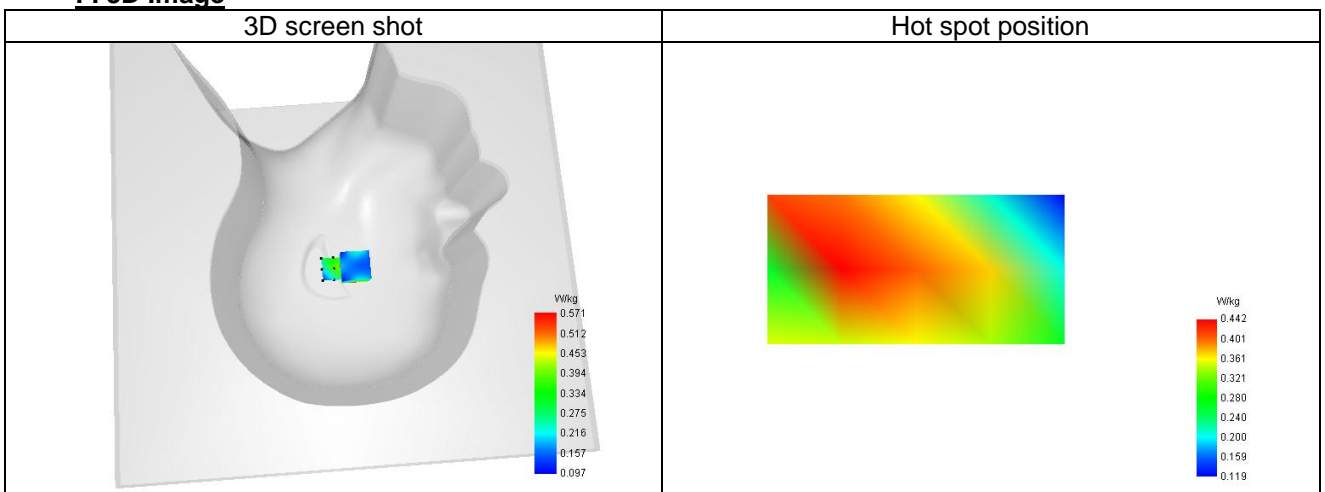
Maximum location: X=-25.00, Y=12.00 ; SAR Peak: 1.07 W/kg

D. SAR 1g & 10g

SAR 10g (W/Kg)	0.235
SAR 1g (W/Kg)	0.490
Variation (%)	-2.050
Horizontal validation criteria: minimum distance (mm)	0.000000
Vertical validation criteria: SAR ratio M2/M1 (%)	0.000000

E. Z Axis Scan

Z (mm)	0.00	4.00	9.00	14.00	19.00
SAR (W/Kg)	0.938	0.693	0.446	0.310	0.257


F. 3D Image


Plot 4

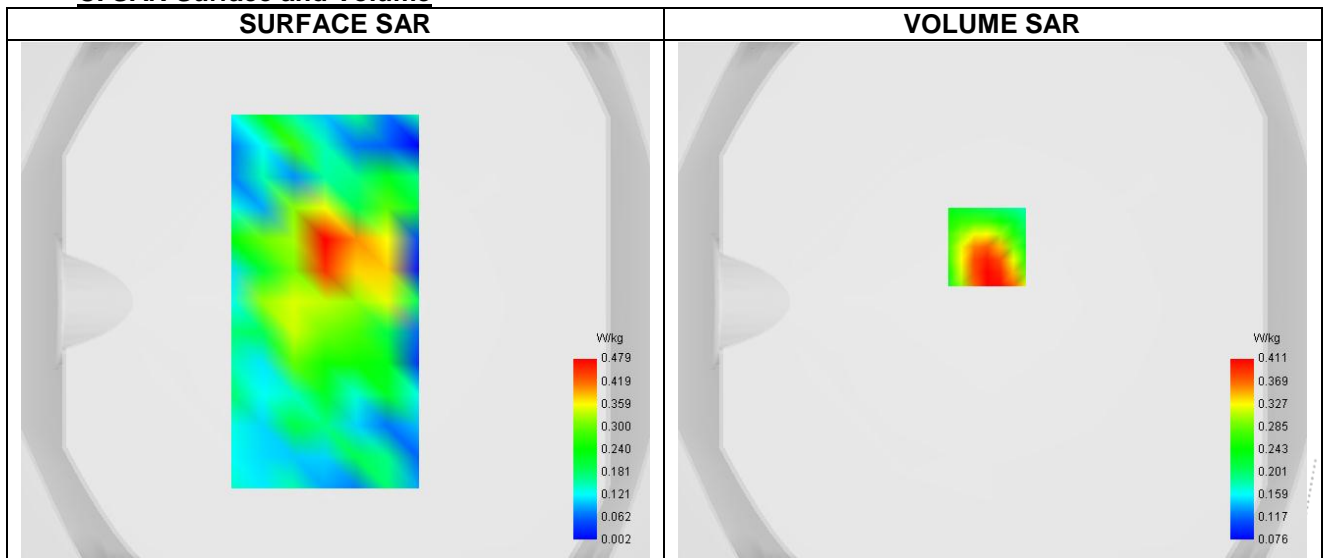
A. Experimental conditions.

Probe	SN 26/23 EPGO420
ConvF	1.04
Area Scan	surf_sam_plan.txt
Zoom Scan	7x7x7,dx=5mm dy=5mm dz=5mm
Phantom	Validation plane
Device Position	Body
Band	GPRS1900_1TX
Channels	Middle (661)
Signal	Custom (Crest factor: 4.0)

B. Permittivity

Frequency (MHz)	1880.000
Relative permittivity (real part)	39.943
Relative permittivity (imaginary part)	13.408
Conductivity (S/m)	1.365

C. SAR Surface and Volume



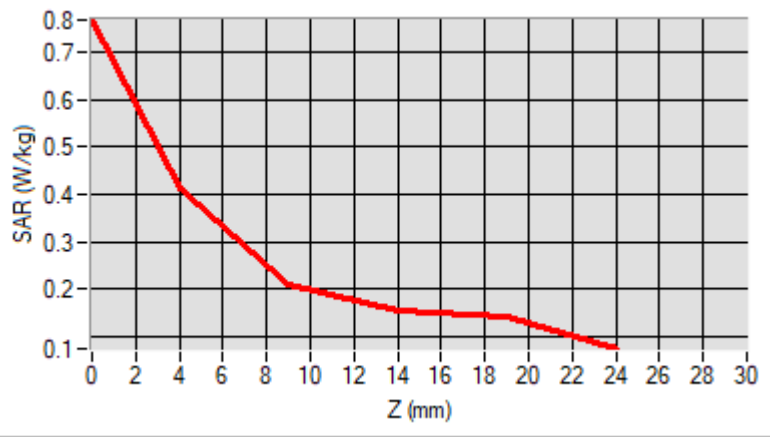
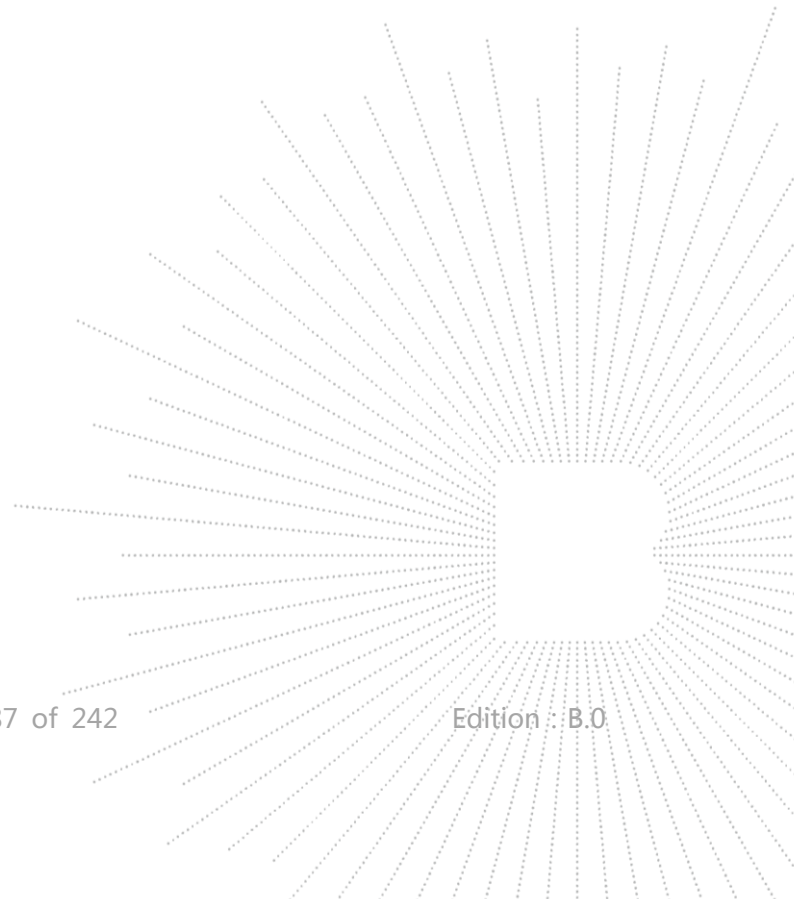
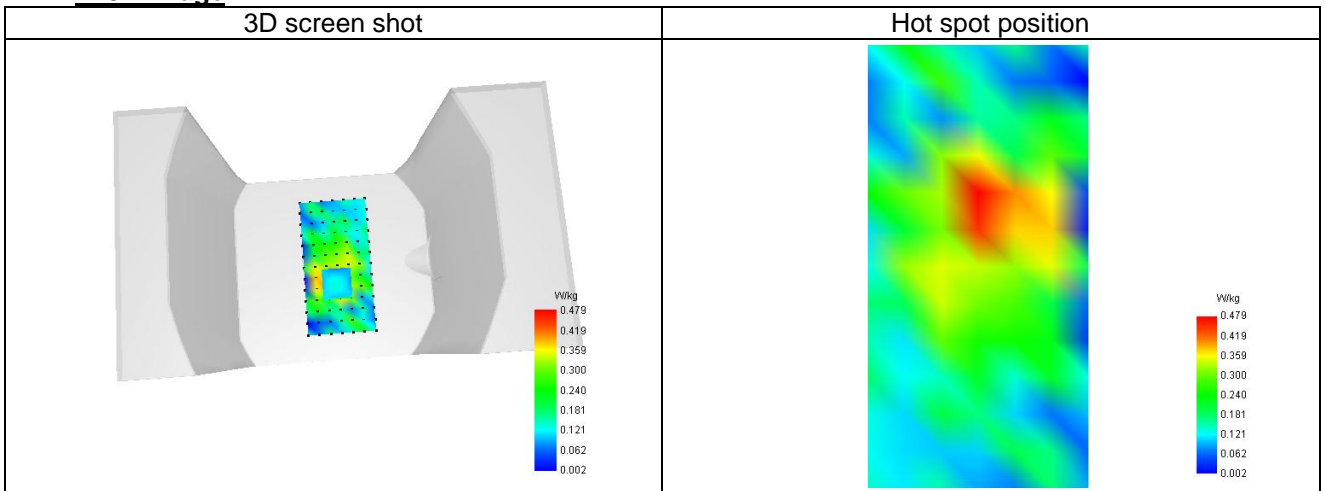
Maximum location: X=21.00, Y=47.00 ; SAR Peak: 0.65 W/kg

D. SAR 1g & 10g

SAR 10g (W/Kg)	0.149
SAR 1g (W/Kg)	0.367
Variation (%)	3.016
Horizontal validation criteria: minimum distance (mm)	0.000000
Vertical validation criteria: SAR ratio M2/M1 (%)	0.000000

E. Z Axis Scan

Z (mm)	0.00	4.00	9.00	14.00	19.00
SAR (W/Kg)	2.272	0.422	0.155	0.319	0.141


F. 3D Image


Plot 5

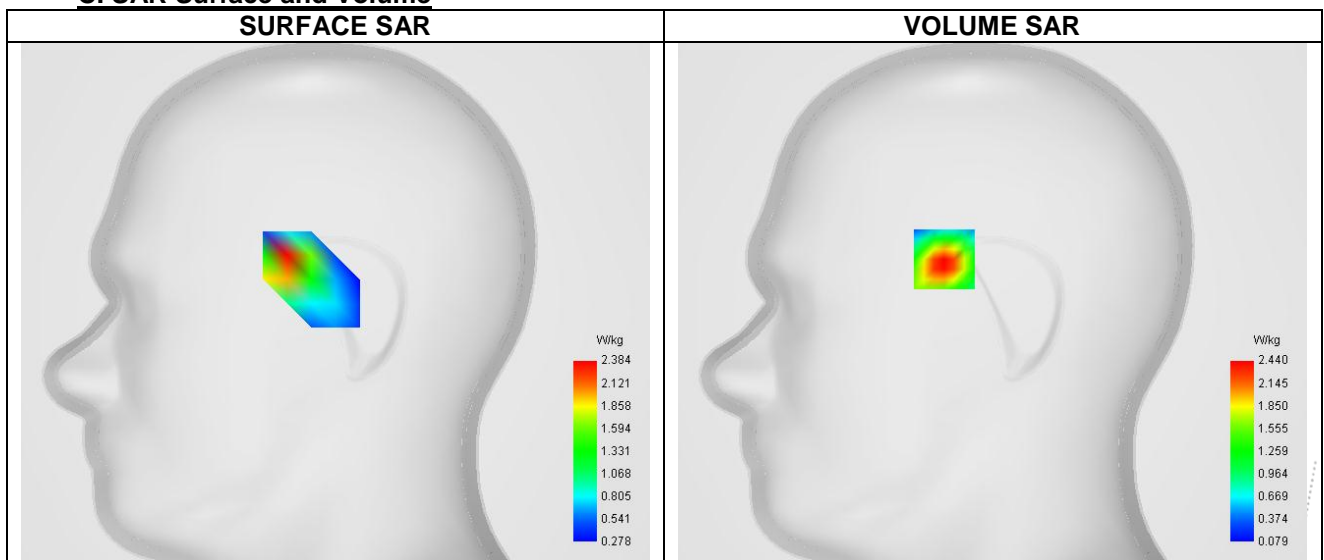
A. Experimental conditions.

Probe	SN 26/23 EPGO420
ConvF	1.04
Area Scan	dx=12mm dy=12mm, Adaptive 1 max
Zoom Scan	7x7x7,dx=5mm dy=5mm dz=5mm
Phantom	Right head
Device Position	Cheek
Band	Band2_WCDMA1900
Channels	Higher (9538)
Signal	WCDMA (Crest factor: 1.0)

B. Permittivity

Frequency (MHz)	1907.600
Relative permittivity (real part)	40.990
Relative permittivity (imaginary part)	13.408
Conductivity (S/m)	1.427

C. SAR Surface and Volume



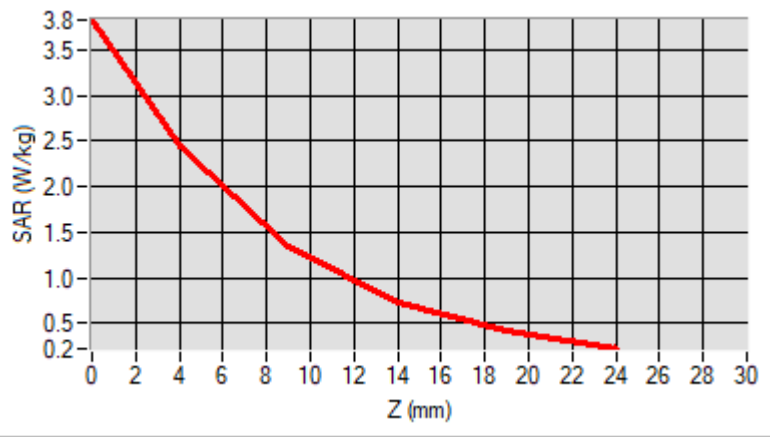
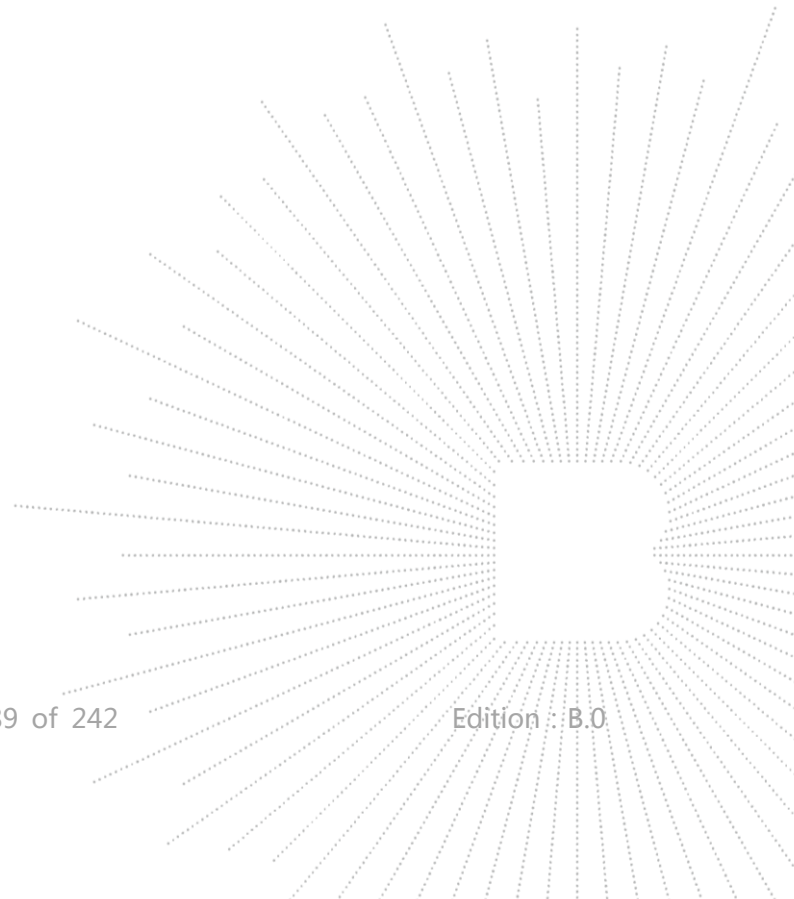
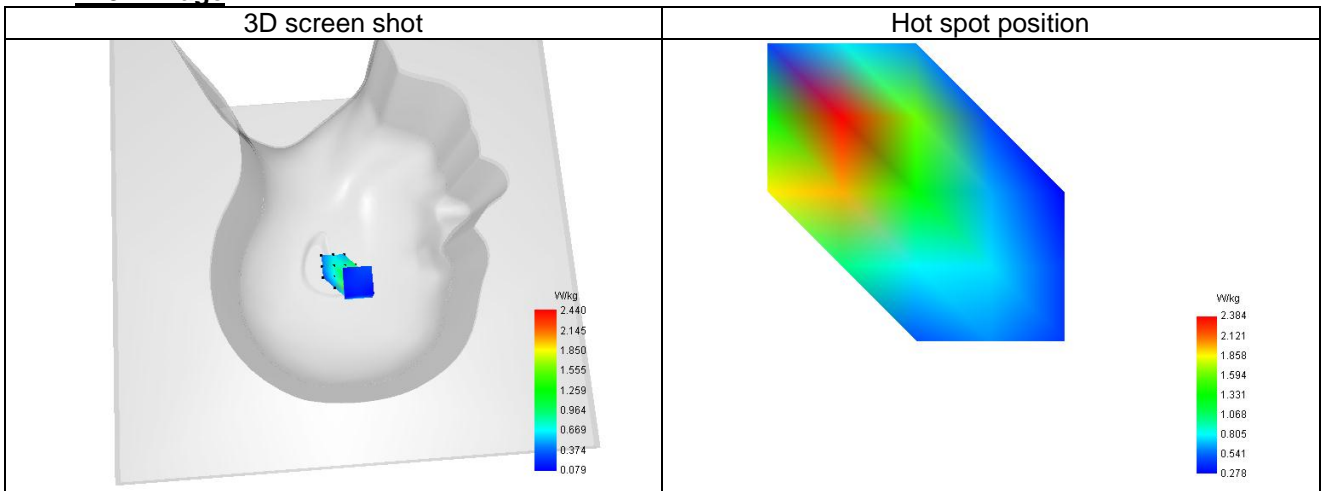
Maximum location: X=-22.00, Y=18.00 ; SAR Peak: 1.19 W/kg

D. SAR 1g & 10g

SAR 10g (W/Kg)	0.203
SAR 1g (W/Kg)	0.383
Variation (%)	-1076
Horizontal validation criteria: minimum distance (mm)	0.000000
Vertical validation criteria: SAR ratio M2/M1 (%)	0.000000

E. Z Axis Scan

Z (mm)	0.00	4.00	9.00	14.00	19.00
SAR (W/Kg)	1.184	0.849	0.556	0.368	0.248


F. 3D Image


Plot 6

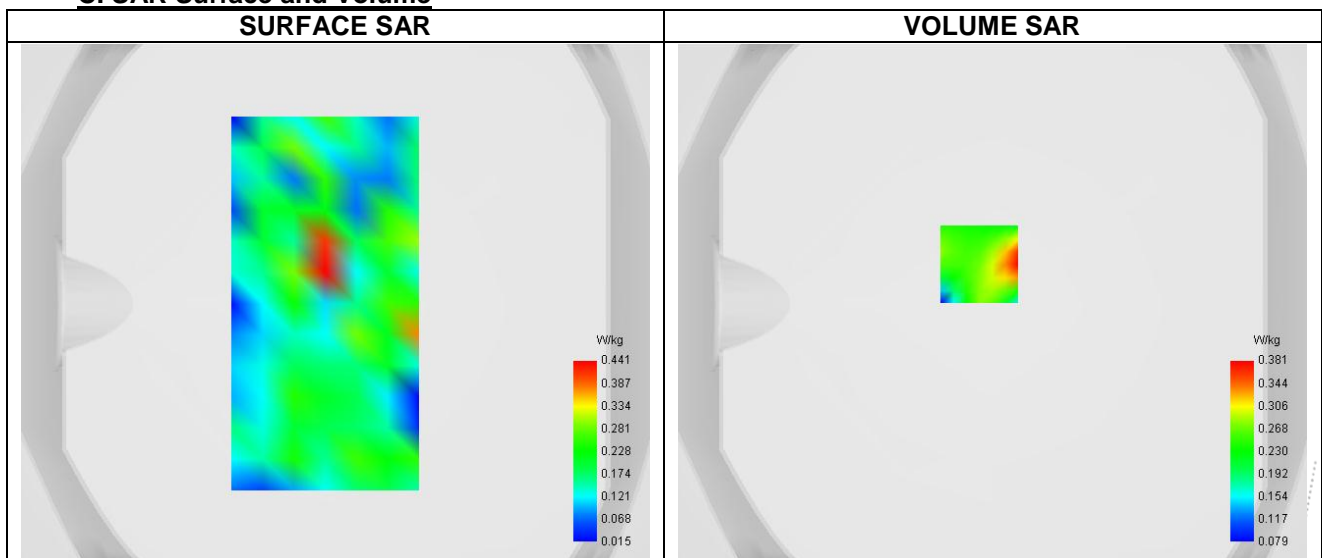
A. Experimental conditions.

Probe	SN 26/23 EPGO420
ConvF	1.04
Area Scan	surf_sam_plan.txt
Zoom Scan	7x7x7,dx=5mm dy=5mm dz=5mm
Phantom	Validation plane
Device Position	Body
Band	Band2_WCDMA1900
Channels	Higher (9538)
Signal	WCDMA (Crest factor: 1.0)

B. Permittivity

Frequency (MHz)	1907.600
Relative permittivity (real part)	40.990
Relative permittivity (imaginary part)	13.408
Conductivity (S/m)	1.427

C. SAR Surface and Volume



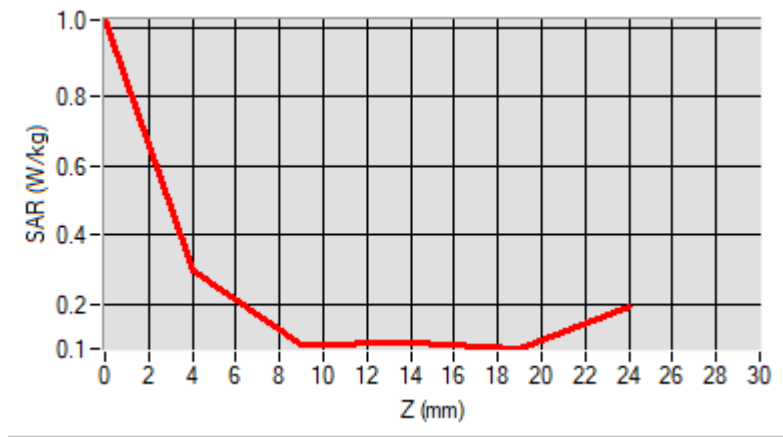
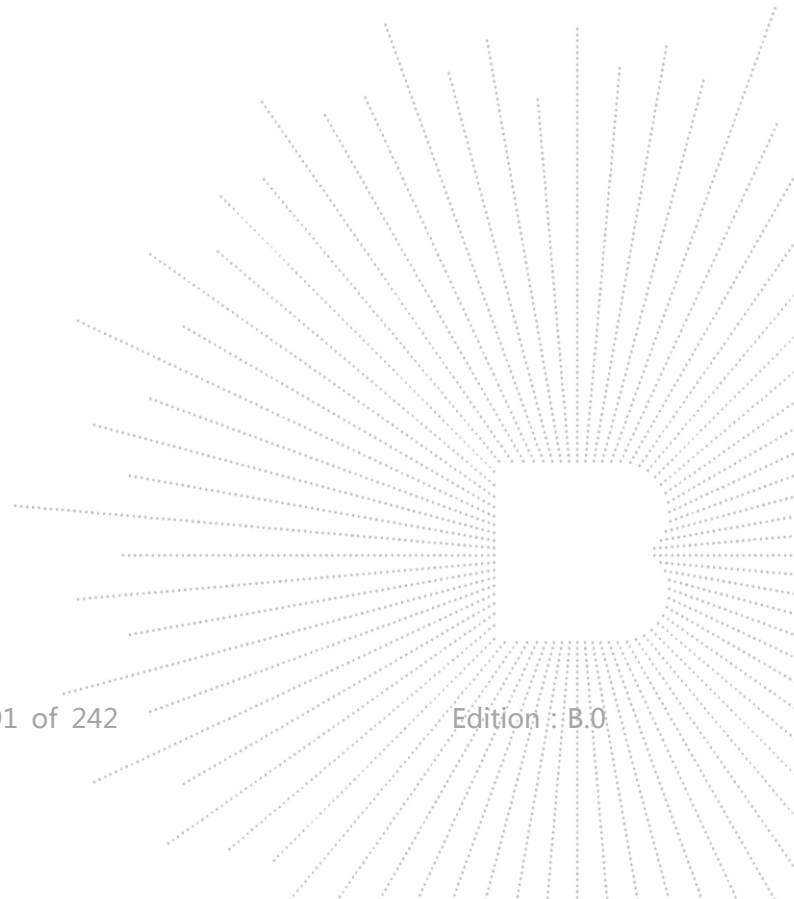
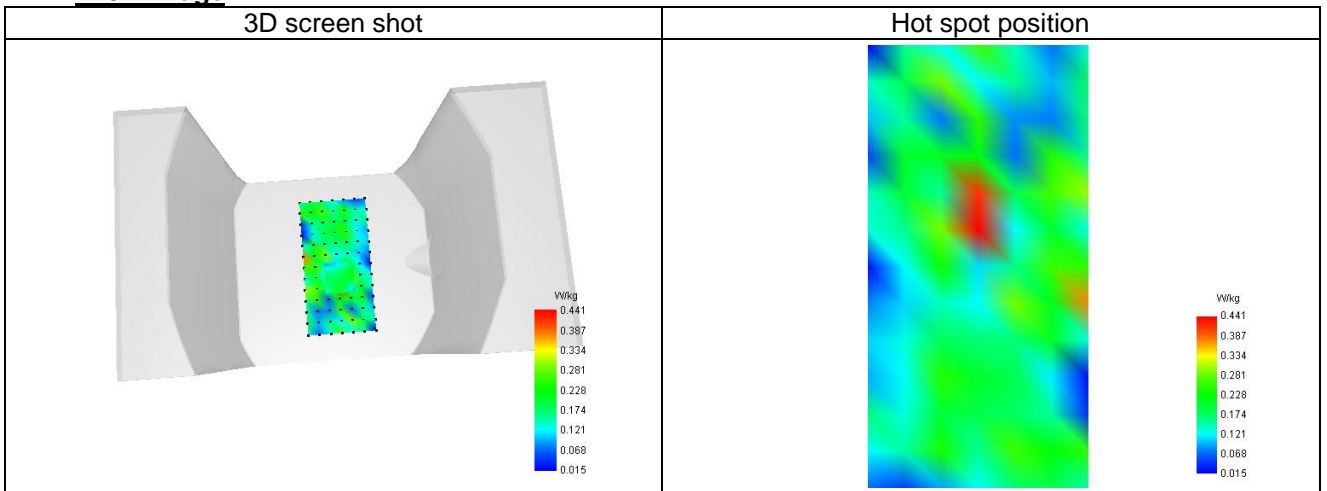
Maximum location: X=7.00, Y=12.00 ; SAR Peak: 0.99 W/kg

D. SAR 1g & 10g

SAR 10g (W/Kg)	0.147
SAR 1g (W/Kg)	0.295
Variation (%)	3.921
Horizontal validation criteria: minimum distance (mm)	0.000000
Vertical validation criteria: SAR ratio M2/M1 (%)	0.000000

E. Z Axis Scan

Z (mm)	0.00	4.00	9.00	14.00	19.00
SAR (W/Kg)	1.304	0.617	0.314	0.238	0.185


F. 3D Image


Plot 7

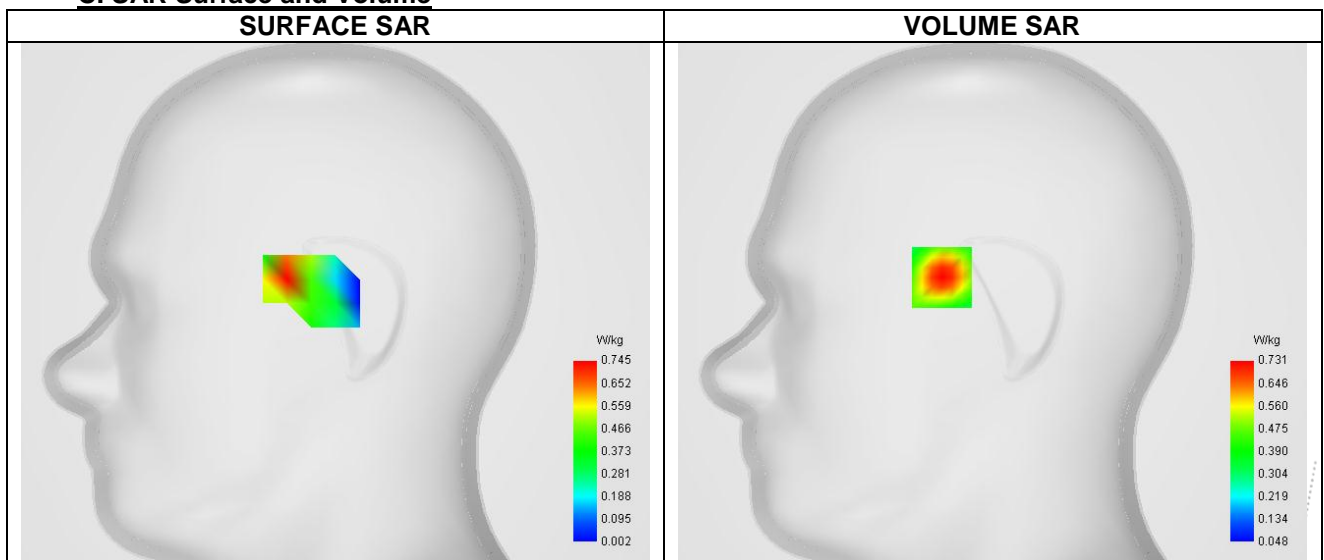
A. Experimental conditions.

Probe	SN 26/23 EPGO420
ConvF	0.96
Area Scan	dx=12mm dy=12mm, Adaptive 1 max
Zoom Scan	7x7x7,dx=5mm dy=5mm dz=5mm
Phantom	Right head
Device Position	Cheek
Band	Band4_WCDMA1700
Channels	Lower (1312)
Signal	WCDMA (Crest factor: 1.0)

B. Permittivity

Frequency (MHz)	1712.400
Relative permittivity (real part)	39.943
Relative permittivity (imaginary part)	14.137
Conductivity (S/m)	1.365

C. SAR Surface and Volume



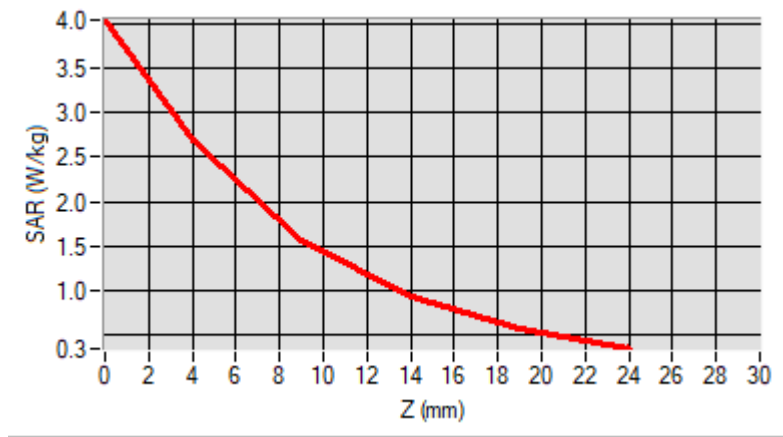
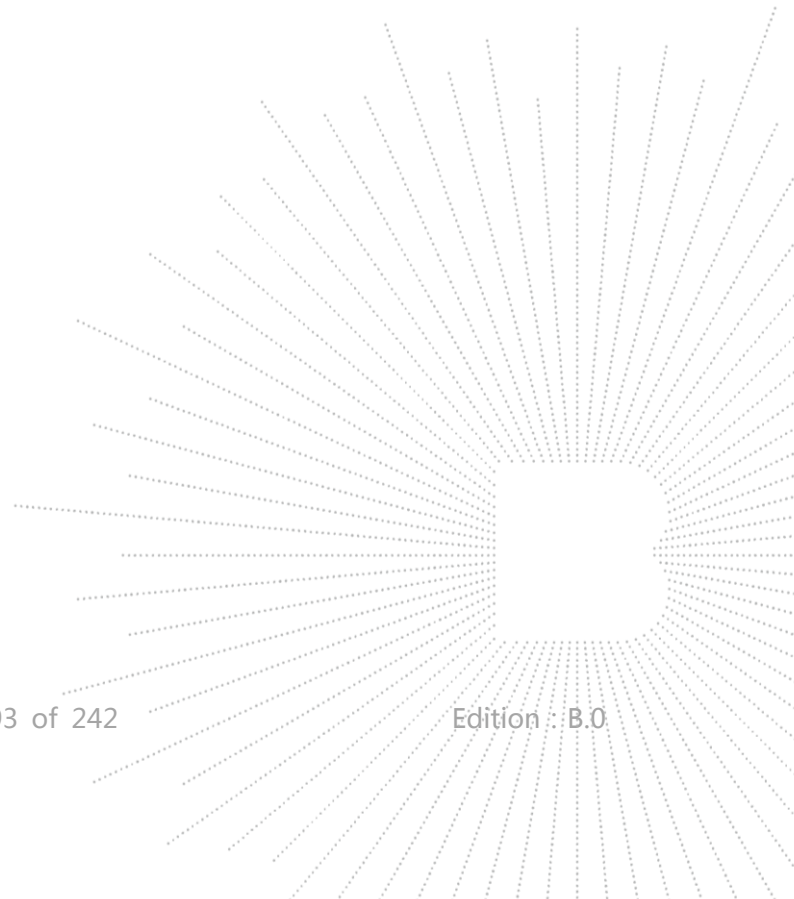
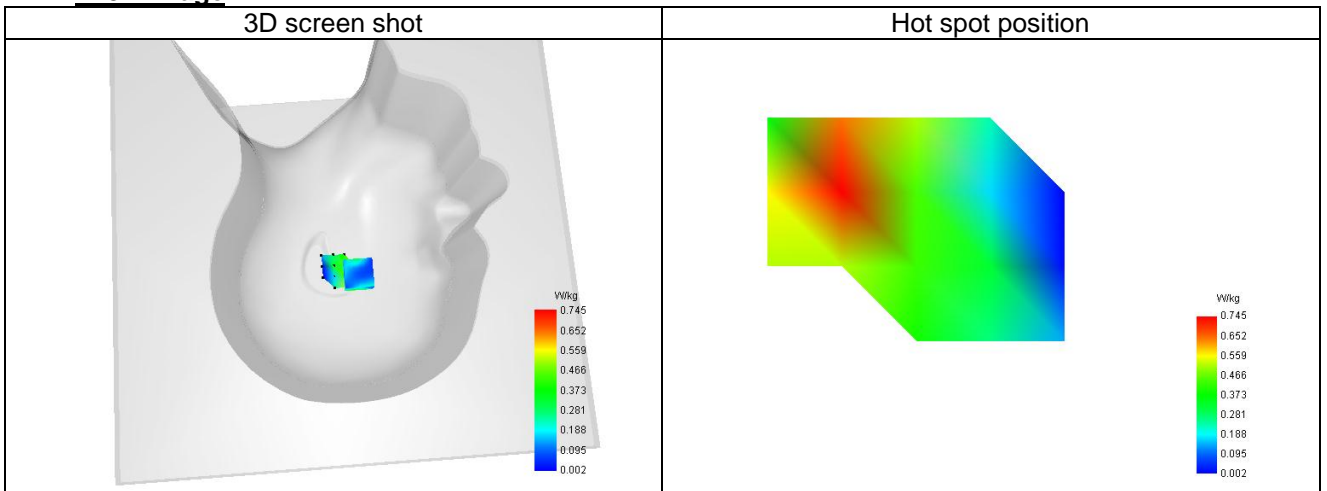
Maximum location: X=-23.00, Y=22.00 ; SAR Peak: 1.16 W/kg

D. SAR 1g & 10g

SAR 10g (W/Kg)	0.503
SAR 1g (W/Kg)	0.744
Variation (%)	1.673
Horizontal validation criteria: minimum distance (mm)	0.000000
Vertical validation criteria: SAR ratio M2/M1 (%)	0.000000

E. Z Axis Scan

Z (mm)	0.00	4.00	9.00	14.00	19.00
SAR (W/Kg)	1.148	0.919	0.640	0.390	0.188


F. 3D Image


Plot 8

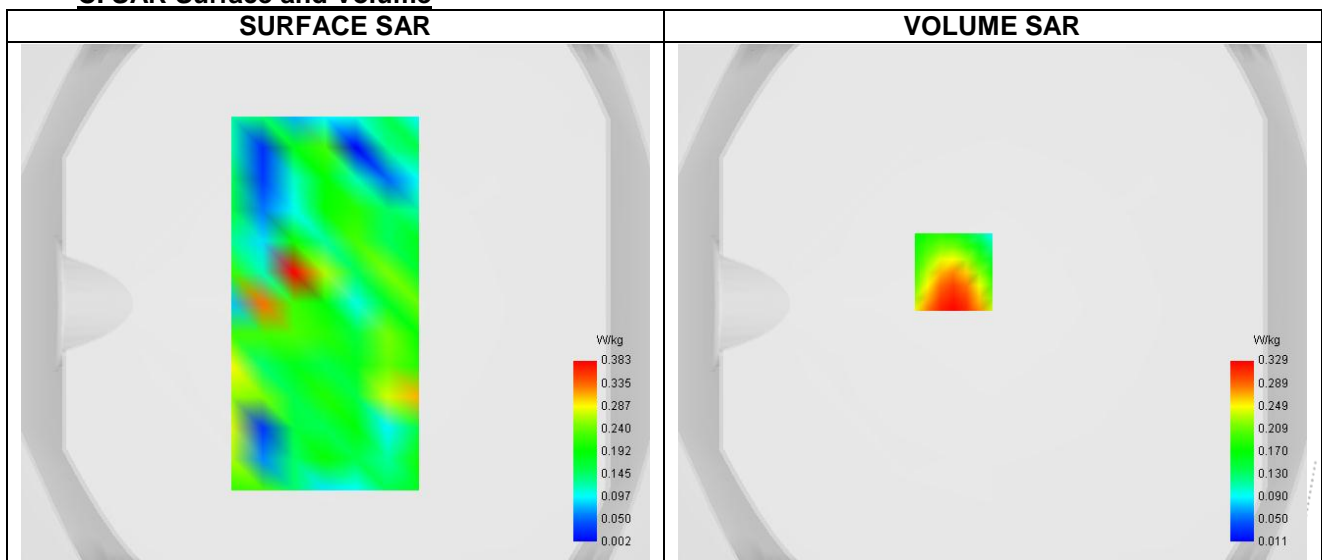
A. Experimental conditions.

Probe	SN 26/23 EPGO420
ConvF	0.96
Area Scan	surf_sam_plan.txt
Zoom Scan	7x7x7,dx=5mm dy=5mm dz=5mm
Phantom	Validation plane
Device Position	Body
Band	Band4_WCDMA1700
Channels	Lower (1312)
Signal	WCDMA (Crest factor: 1.0)

B. Permittivity

Frequency (MHz)	1712.400
Relative permittivity (real part)	39.943
Relative permittivity (imaginary part)	14.137
Conductivity (S/m)	1.365

C. SAR Surface and Volume

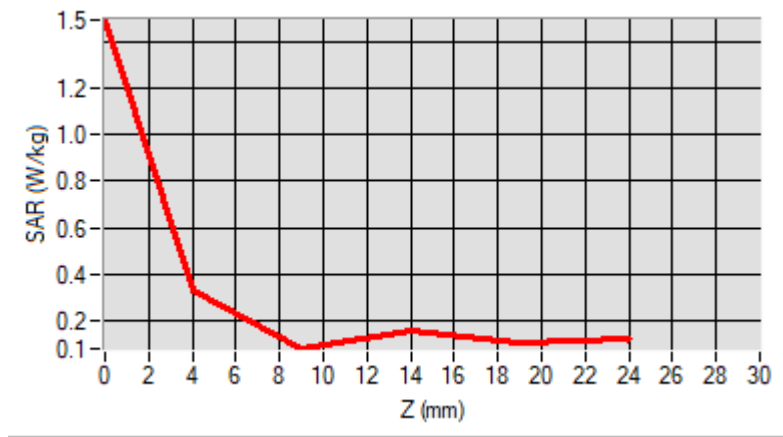
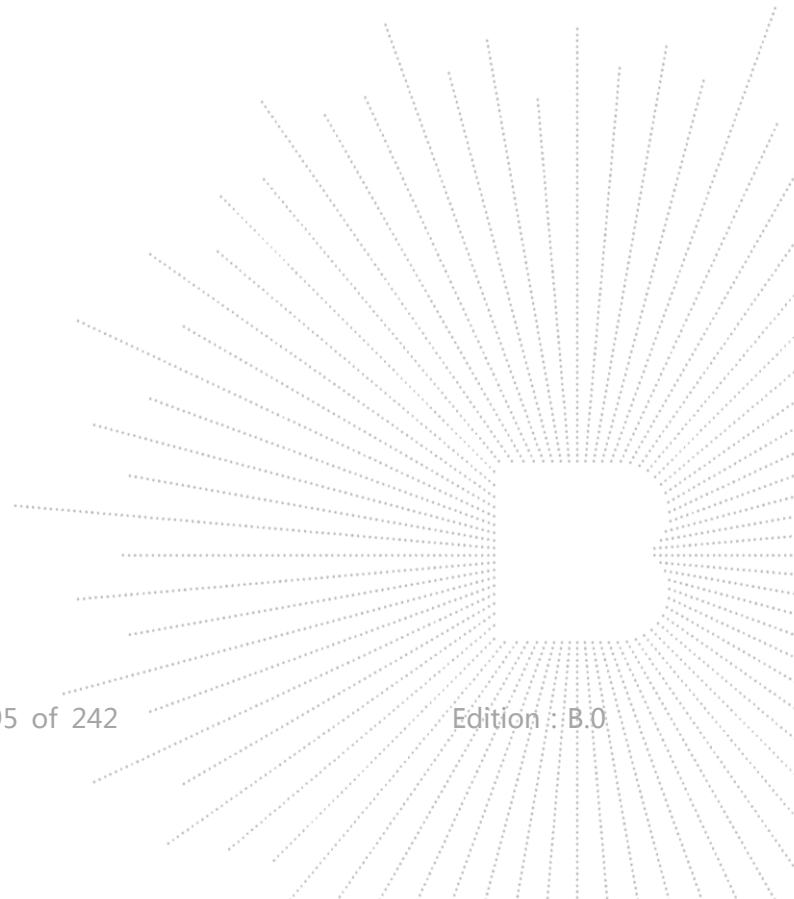
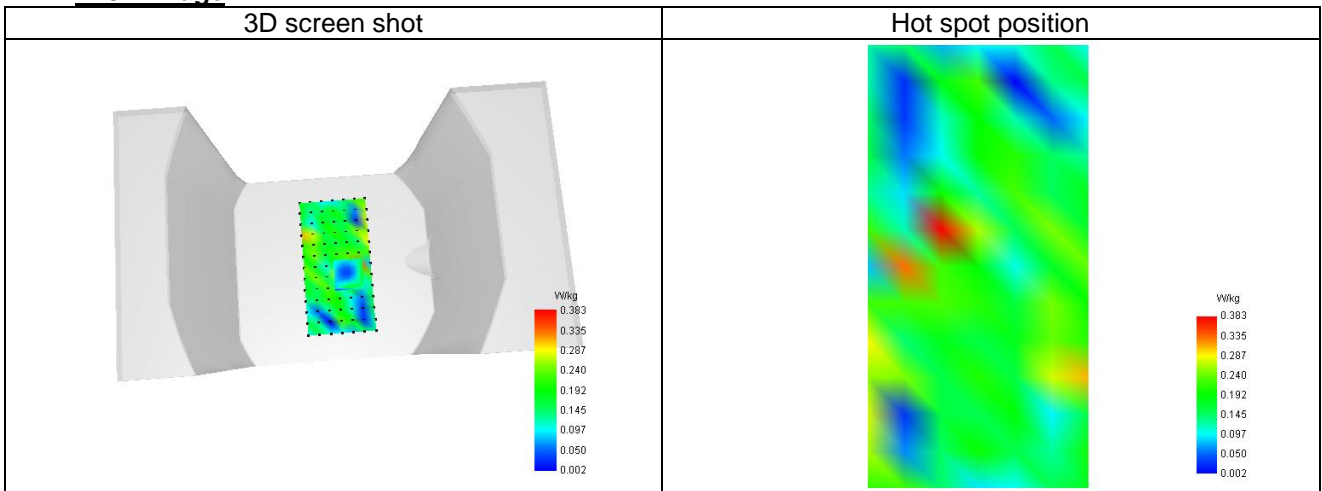


D. SAR 1g & 10g

SAR 10g (W/Kg)	0.194
SAR 1g (W/Kg)	0.398
Variation (%)	-3.072
Horizontal validation criteria: minimum distance (mm)	0.000000
Vertical validation criteria: SAR ratio M2/M1 (%)	0.000000

E. Z Axis Scan

Z (mm)	0.00	4.00	9.00	14.00	19.00
SAR (W/Kg)	1.487	0.600	0.272	0.213	0.153


F. 3D Image


Plot 9

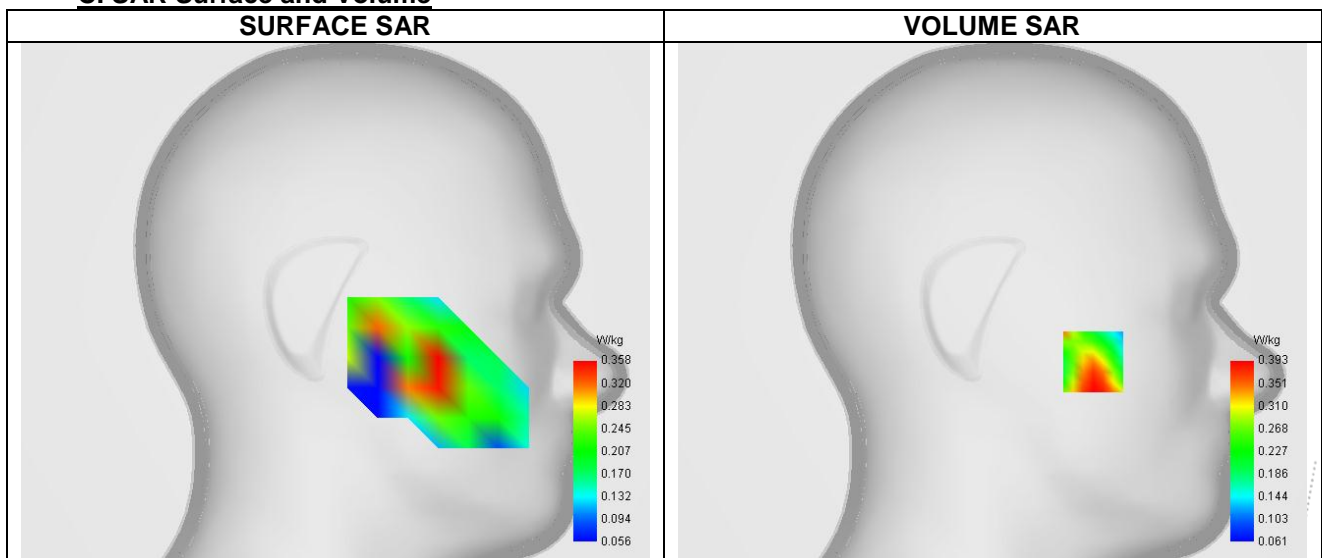
A. Experimental conditions.

Probe	SN 26/23 EPGO420
ConvF	0.81
Area Scan	dx=12mm dy=12mm, Adaptive 1 max
Zoom Scan	7x7x7,dx=5mm dy=5mm dz=5mm
Phantom	Left head
Device Position	Cheek
Band	Band5_WCDMA850
Channels	Higher (4233)
Signal	WCDMA (Crest factor: 1.0)

B. Permittivity

Frequency (MHz)	846.600
Relative permittivity (real part)	42.930
Relative permittivity (imaginary part)	20.226
Conductivity (S/m)	0.920

C. SAR Surface and Volume

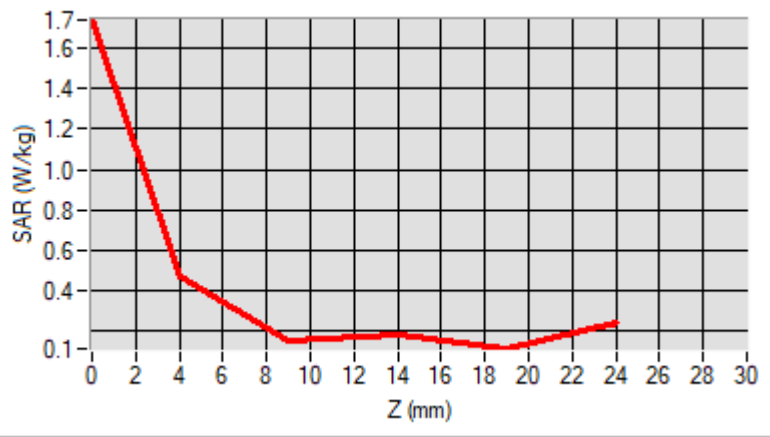
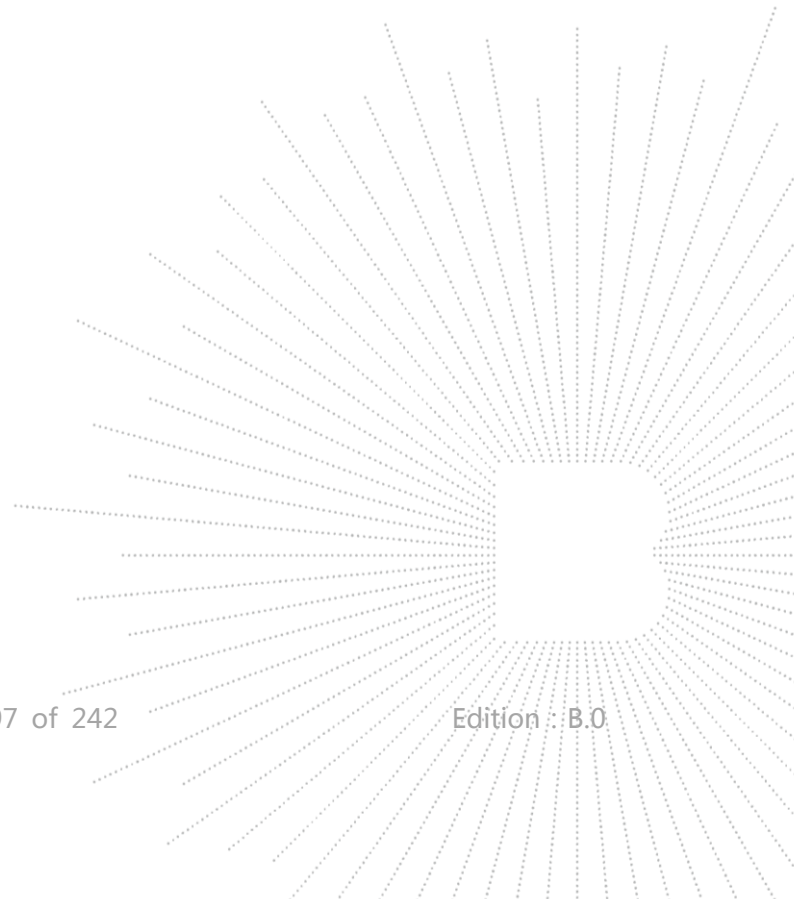
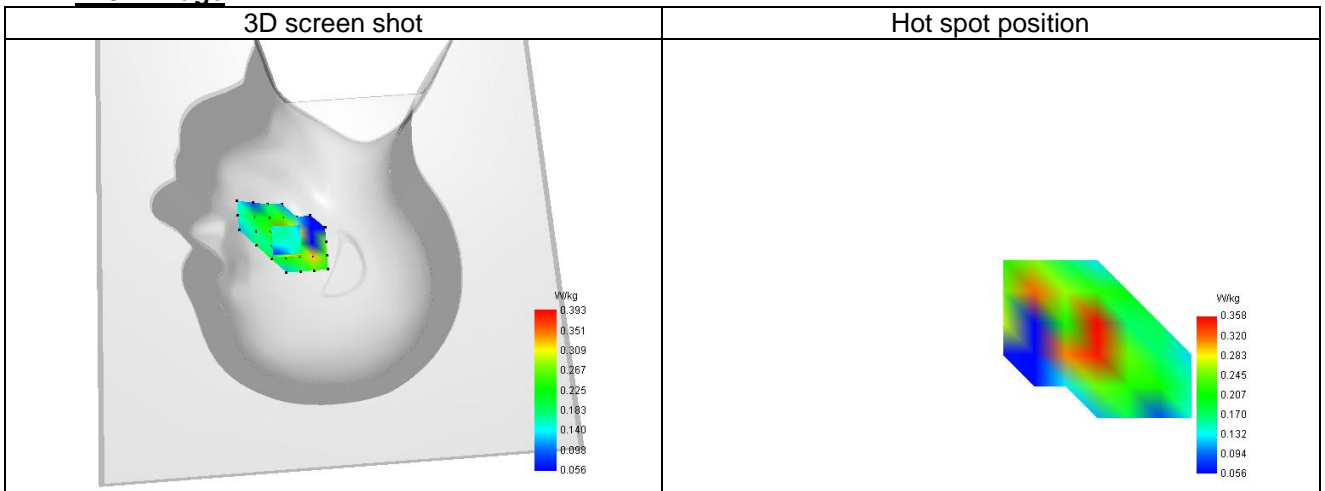


D. SAR 1g & 10g

SAR 10g (W/Kg)	0.203
SAR 1g (W/Kg)	0.362
Variation (%)	-0.179
Horizontal validation criteria: minimum distance (mm)	0.000000
Vertical validation criteria: SAR ratio M2/M1 (%)	0.000000

E. Z Axis Scan

Z (mm)	0.00	4.00	9.00	14.00	19.00
SAR (W/Kg)	0.869	0.345	0.174	0.144	0.097


F. 3D Image


Plot 10

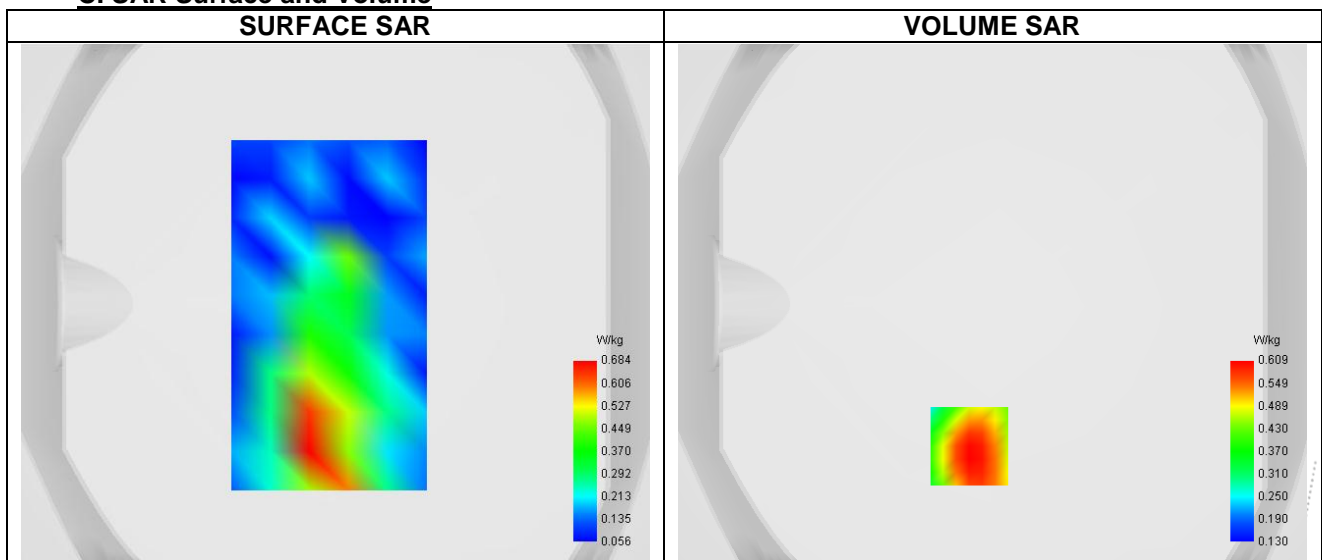
A. Experimental conditions.

Probe	SN 26/23 EPGO420
ConvF	0.81
Area Scan	surf_sam_plan.txt
Zoom Scan	7x7x7,dx=5mm dy=5mm dz=5mm
Phantom	Validation plane
Device Position	Body
Band	Band5_WCDMA850
Channels	Higher (4233)
Signal	WCDMA (Crest factor: 1.0)

B. Permittivity

Frequency (MHz)	846.600
Relative permittivity (real part)	42.930
Relative permittivity (imaginary part)	20.226
Conductivity (S/m)	0.920

C. SAR Surface and Volume



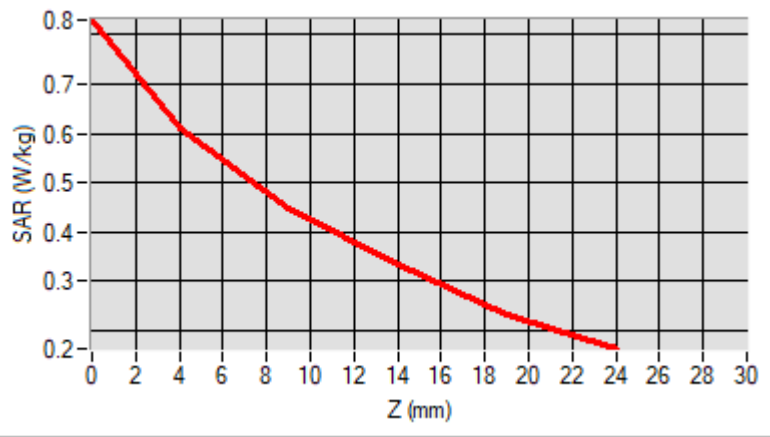
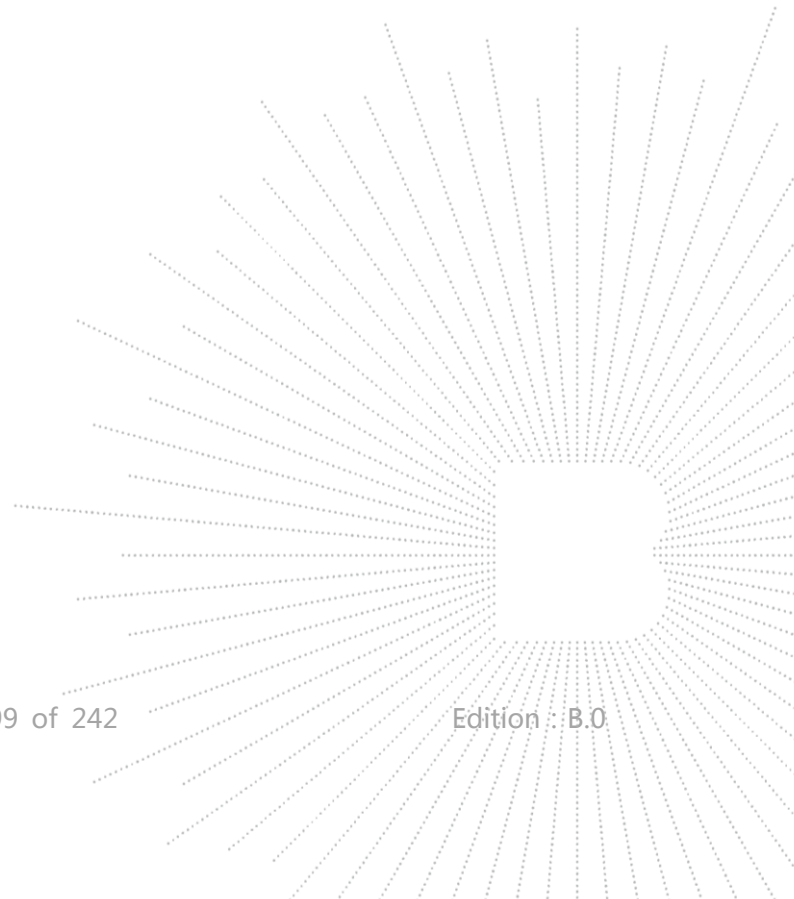
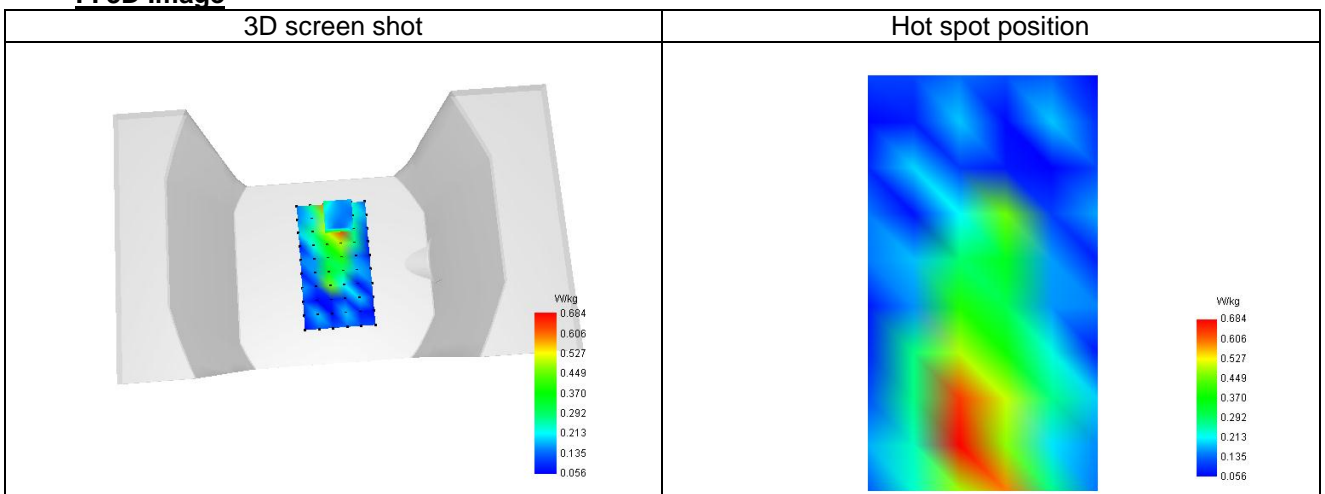
Maximum location: X=6.00, Y=-24.00 ; SAR Peak: 1.41 W/kg

D. SAR 1g & 10g

SAR 10g (W/Kg)	0.121
SAR 1g (W/Kg)	0.272
Variation (%)	-0.606
Horizontal validation criteria: minimum distance (mm)	0.000000
Vertical validation criteria: SAR ratio M2/M1 (%)	0.000000

E. Z Axis Scan

Z (mm)	0.00	4.00	9.00	14.00	19.00
SAR (W/Kg)	3.562	0.811	0.138	0.260	0.144


F. 3D Image


Plot 11

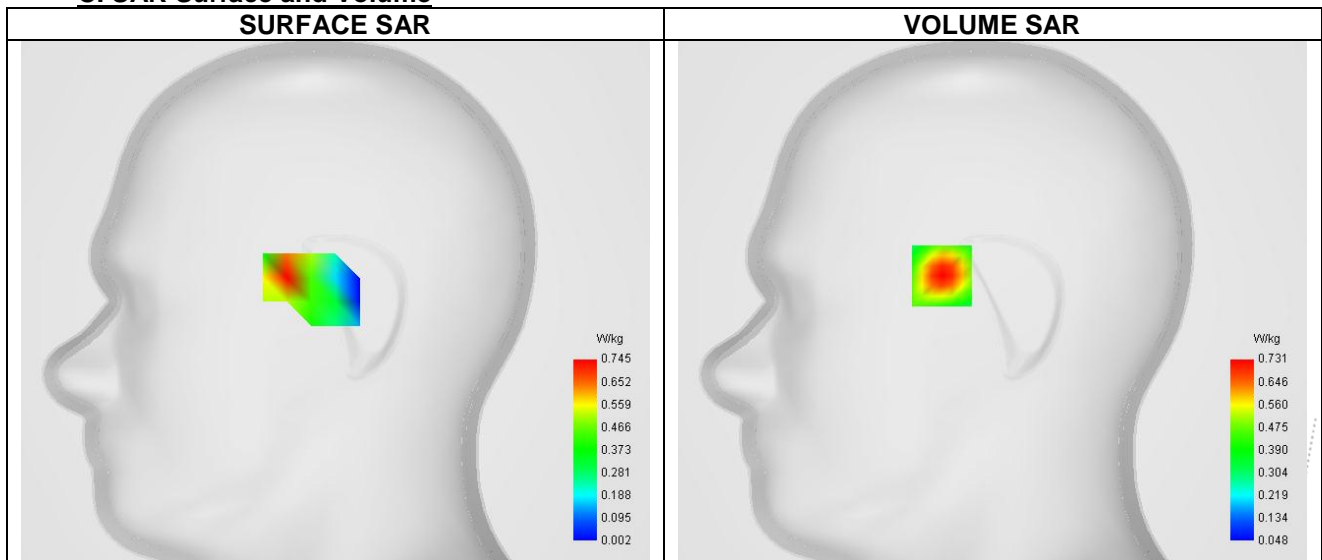
A. Experimental conditions.

Probe	SN 26/23 EPGO420
ConvF	1.04
Area Scan	dx=12mm dy=12mm, Adaptative 1 max
Zoom Scan	7x7x7,dx=5mm dy=5mm dz=5mm
Phantom	Right head
Device Position	Cheek
Band	LTE band 2
Channels	Middle (18900)
Signal	LTE (Crest factor: 1.0)

B. Permittivity

Frequency (MHz)	1880.000
Relative permittivity (real part)	40.990
Relative permittivity (imaginary part)	13.408
Conductivity (S/m)	1.427

C. SAR Surface and Volume



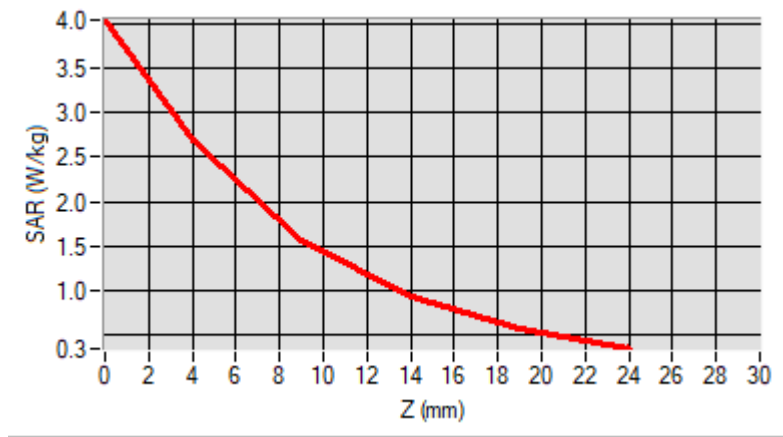
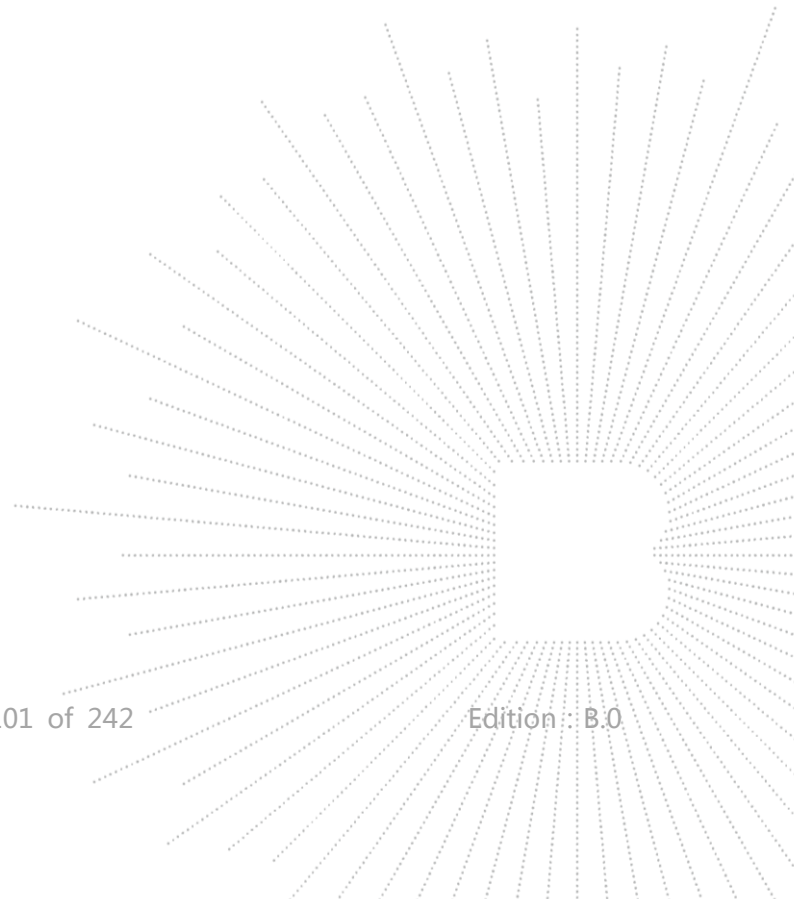
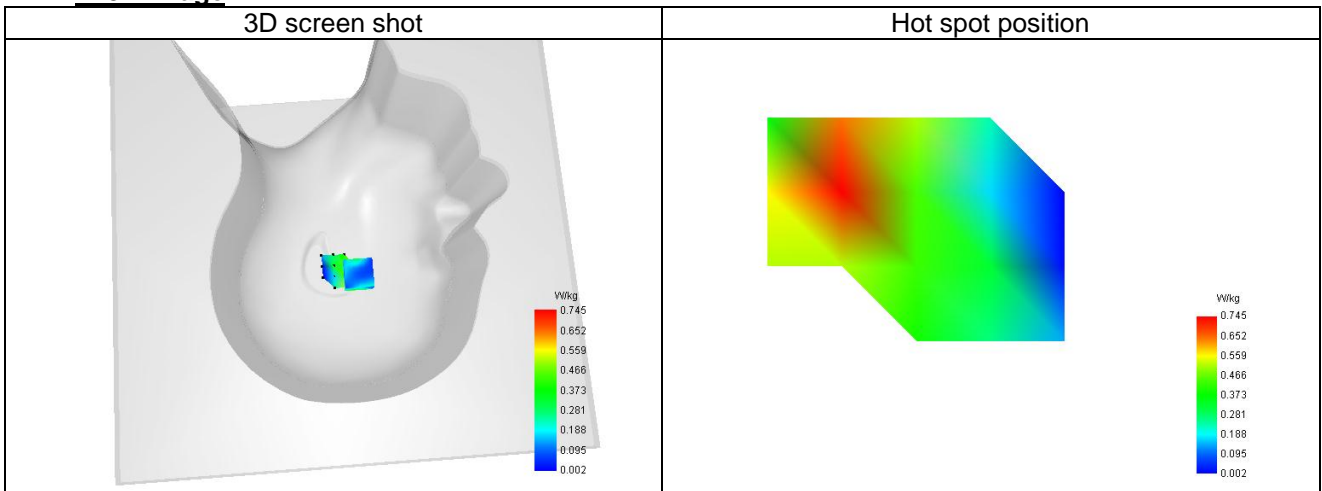
Maximum location: X=-23.00, Y=22.00 ; SAR Peak: 1.25 W/kg

D. SAR 1g & 10g

SAR 10g (W/Kg)	0.483
SAR 1g (W/Kg)	0.769
Variation (%)	-1.167
Horizontal validation criteria: minimum distance (mm)	0.000000
Vertical validation criteria: SAR ratio M2/M1 (%)	0.000000

E. Z Axis Scan

Z (mm)	0.00	4.00	9.00	14.00	19.00
SAR (W/Kg)	1.221	0.771	0.436	0.271	0.199


F. 3D Image


Plot 12

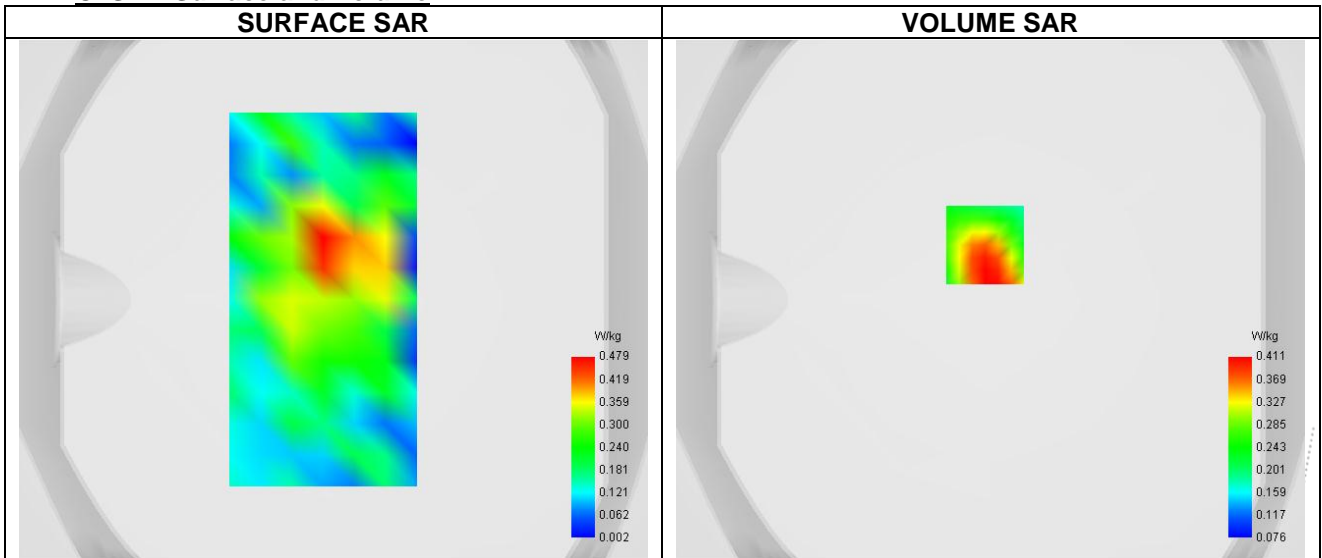
A. Experimental conditions.

Probe	SN 26/23 EPGO420
ConvF	1.04
Area Scan	surf_sam_plan.txt
Zoom Scan	7x7x7,dx=5mm dy=5mm dz=5mm
Phantom	Validation plane
Device Position	Body
Band	LTE band 2
Channels	Middle (18900)
Signal	LTE (Crest factor: 1.0)

B. Permittivity

Frequency (MHz)	1880.000
Relative permittivity (real part)	40.990
Relative permittivity (imaginary part)	13.408
Conductivity (S/m)	1.427

C. SAR Surface and Volume



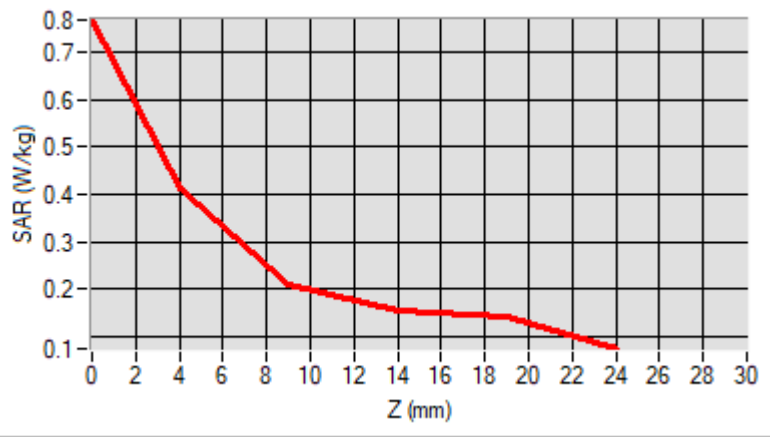
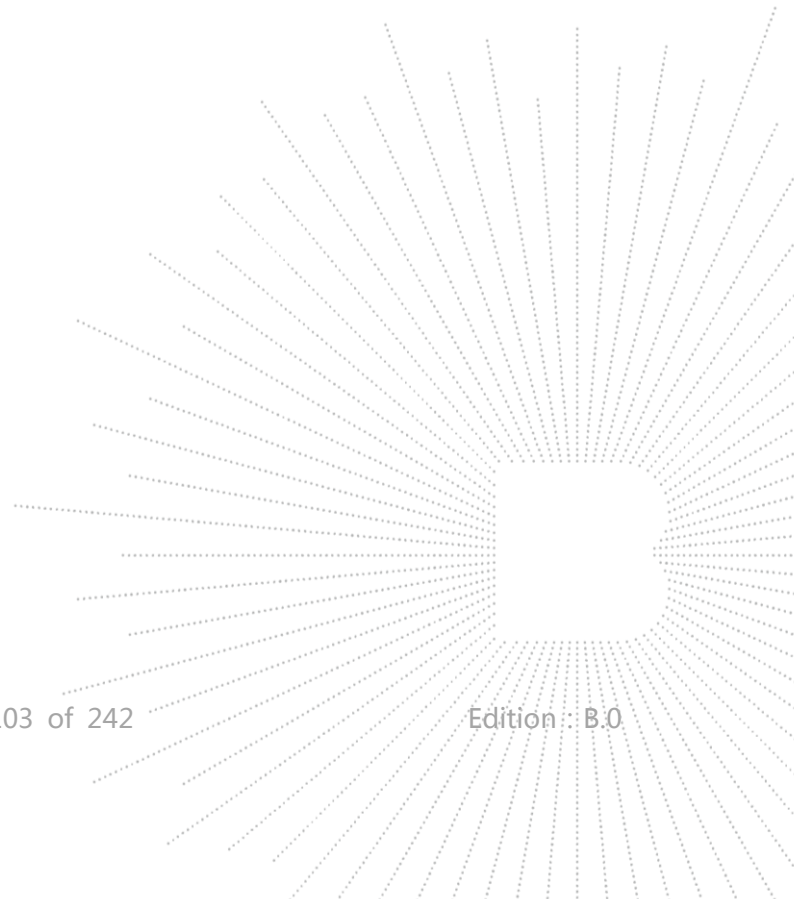
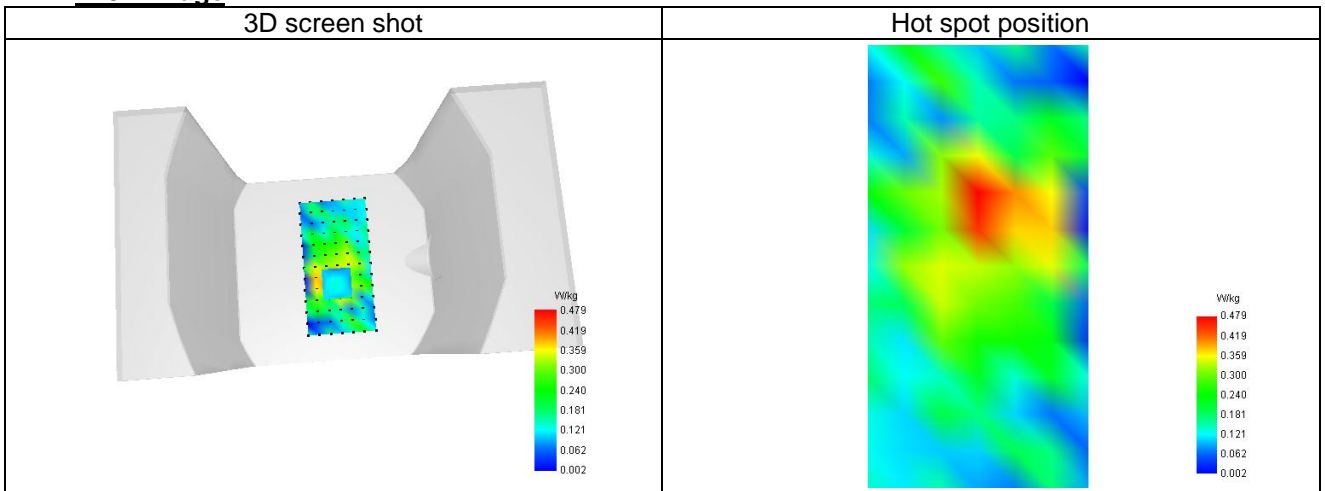
Maximum location: X=7.00, Y=1.00 ; SAR Peak: 0.81 W/kg

D. SAR 1g & 10g

SAR 10g (W/Kg)	0.221
SAR 1g (W/Kg)	0.513
Variation (%)	2.610
Horizontal validation criteria: minimum distance (mm)	0.000000
Vertical validation criteria: SAR ratio M2/M1 (%)	0.000000

E. Z Axis Scan

Z (mm)	0.00	4.00	9.00	14.00	19.00
SAR (W/Kg)	0.896	0.548	0.302	0.180	0.106


F. 3D Image


Plot 13

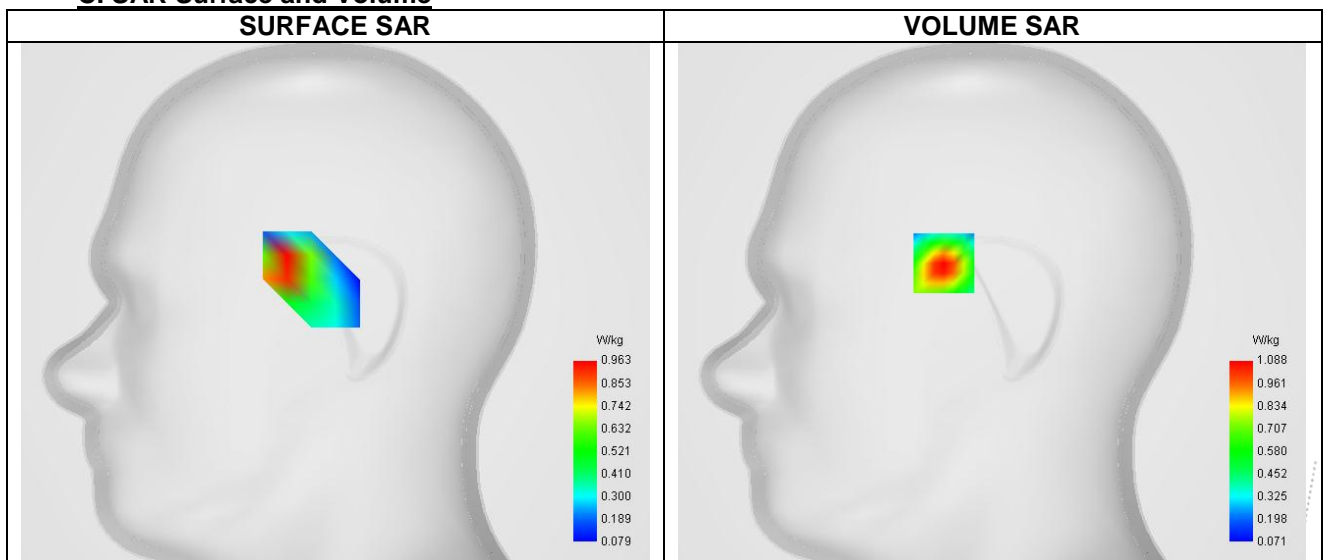
A. Experimental conditions.

Probe	SN 26/23 EPGO420
ConvF	0.96
Area Scan	dx=12mm dy=12mm, Adaptive 1 max
Zoom Scan	7x7x7,dx=5mm dy=5mm dz=5mm
Phantom	Right head
Device Position	Cheek
Band	LTE band 4
Channels	Middle (20175)
Signal	LTE (Crest factor: 1.0)

B. Permittivity

Frequency (MHz)	1732.500
Relative permittivity (real part)	39.943
Relative permittivity (imaginary part)	14.136
Conductivity (S/m)	1.365

C. SAR Surface and Volume



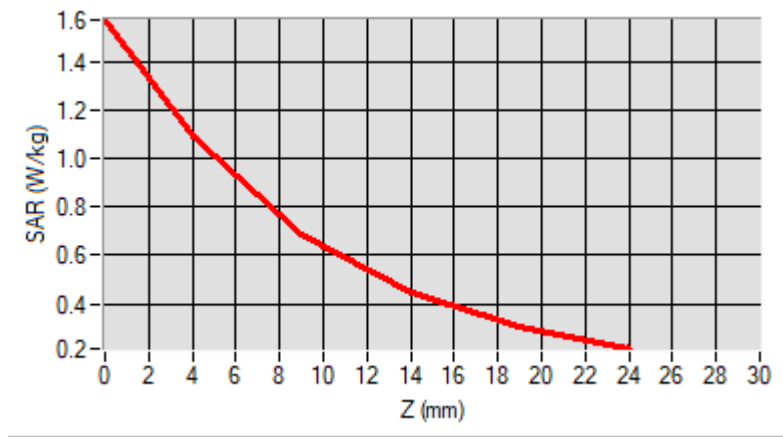
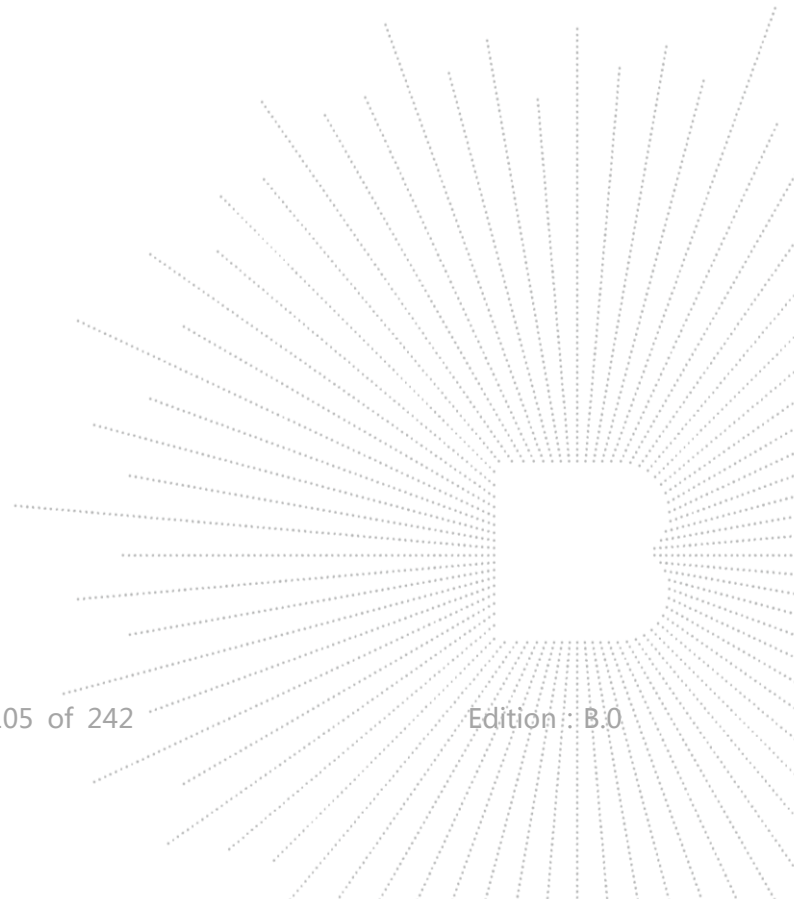
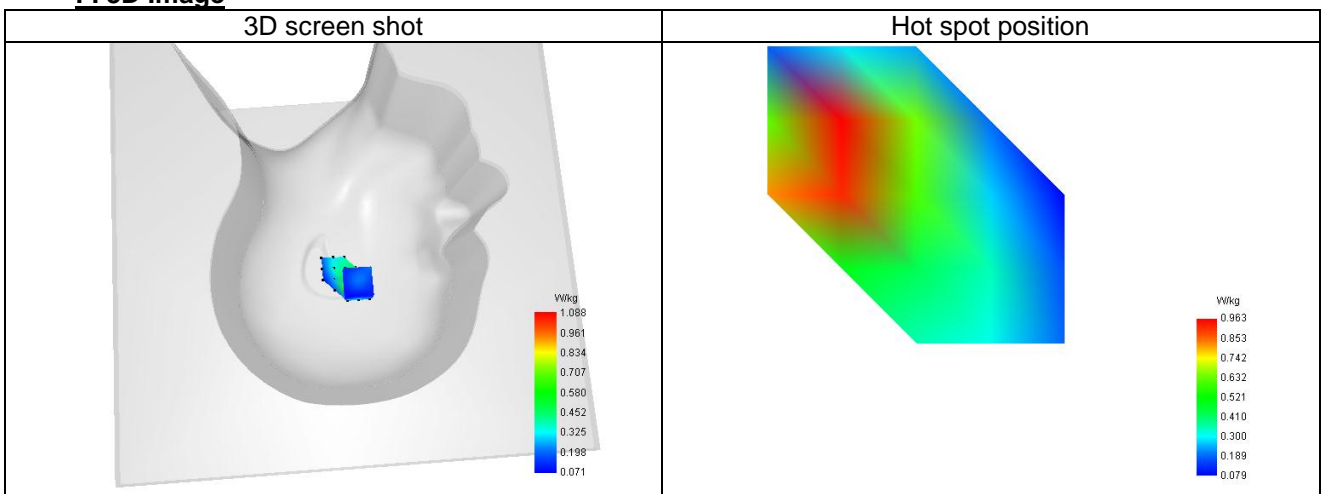
Maximum location: X=-24.00, Y=20.00 ; SAR Peak: 1.58 W/kg

D. SAR 1g & 10g

SAR 10g (W/Kg)	0.463
SAR 1g (W/Kg)	0.860
Variation (%)	-1.480
Horizontal validation criteria: minimum distance (mm)	0.000000
Vertical validation criteria: SAR ratio M2/M1 (%)	0.000000

E. Z Axis Scan

Z (mm)	0.00	4.00	9.00	14.00	19.00
SAR (W/Kg)	1.572	1.088	0.685	0.445	0.306


F. 3D Image


Plot 14

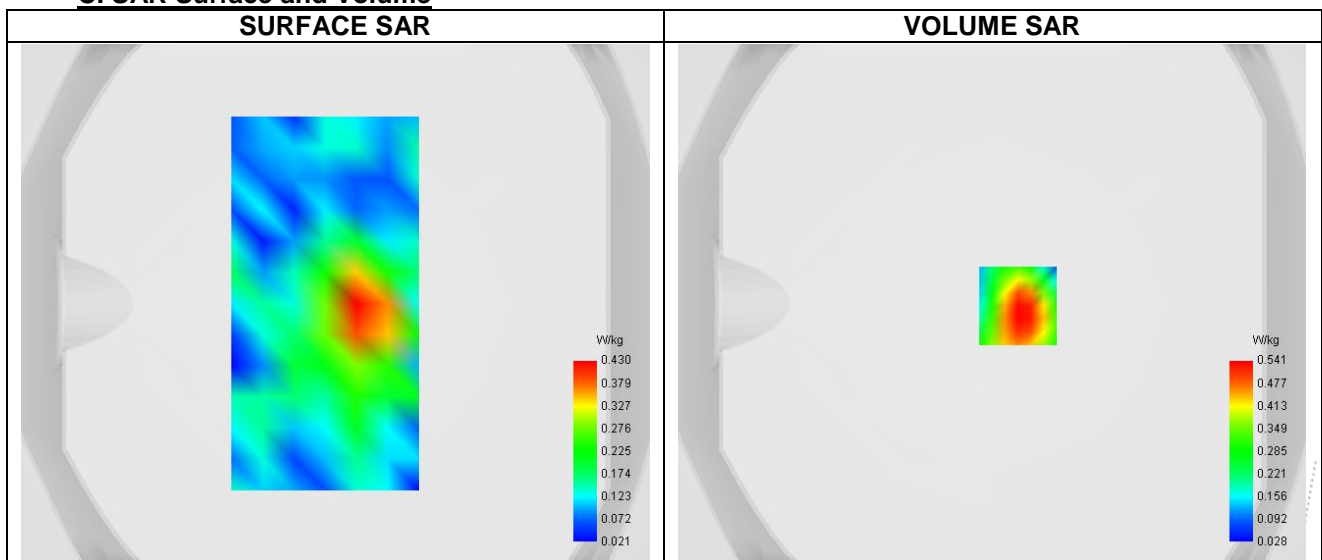
A. Experimental conditions.

Probe	SN 26/23 EPGO420
ConvF	0.96
Area Scan	surf_sam_plan.txt
Zoom Scan	7x7x7,dx=5mm dy=5mm dz=5mm
Phantom	Validation plane
Device Position	Body
Band	LTE band 4
Channels	Middle (20175)
Signal	LTE (Crest factor: 1.0)

B. Permittivity

Frequency (MHz)	1732.500
Relative permittivity (real part)	39.943
Relative permittivity (imaginary part)	14.136
Conductivity (S/m)	1.365

C. SAR Surface and Volume

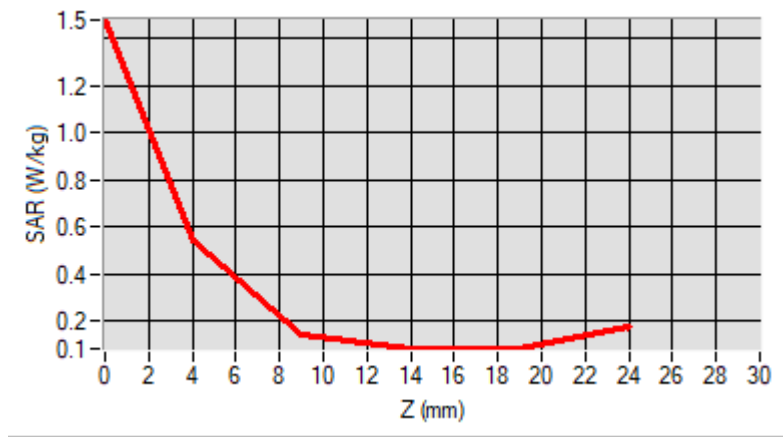
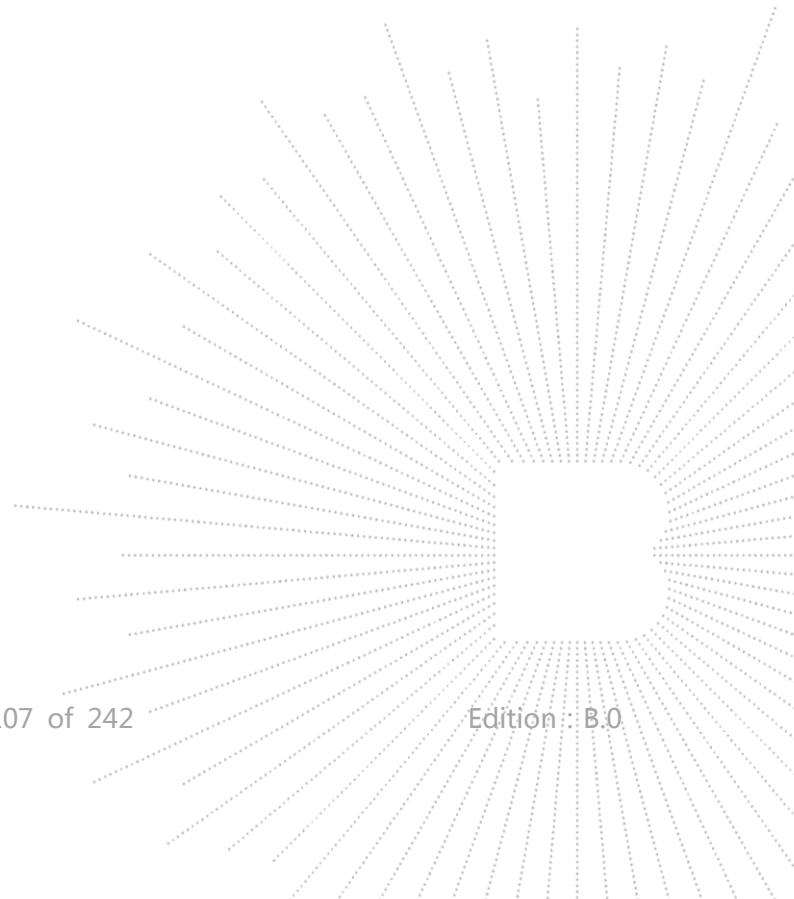
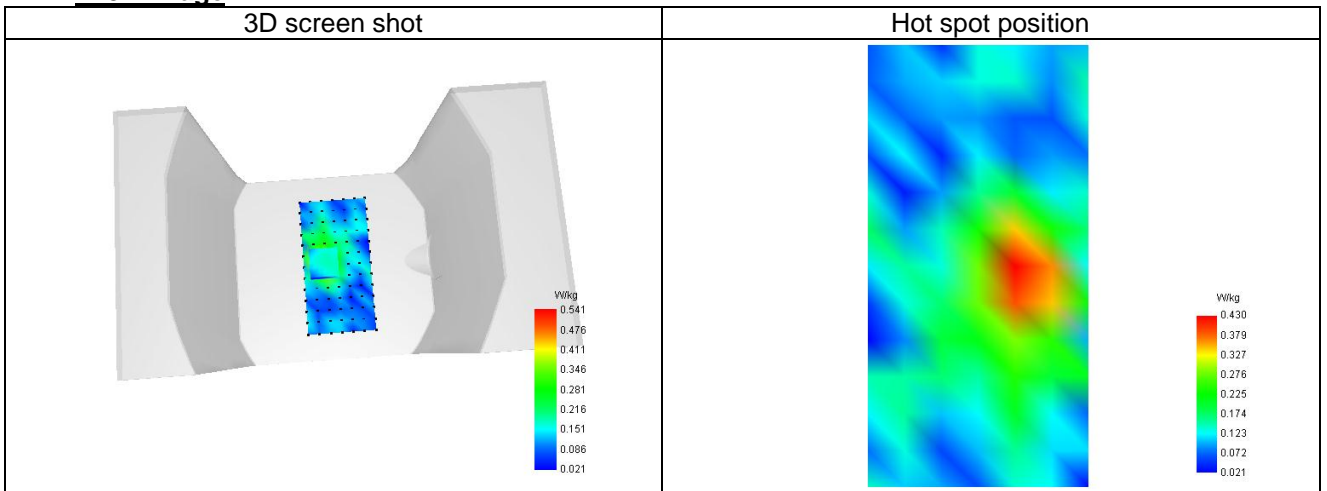


D. SAR 1g & 10g

SAR 10g (W/Kg)	0.236
SAR 1g (W/Kg)	0.490
Variation (%)	0.791
Horizontal validation criteria: minimum distance (mm)	0.000000
Vertical validation criteria: SAR ratio M2/M1 (%)	0.000000

E. Z Axis Scan

Z (mm)	0.00	4.00	9.00	14.00	19.00
SAR (W/Kg)	1.480	0.541	0.145	0.084	0.085


F. 3D Image


Plot 15

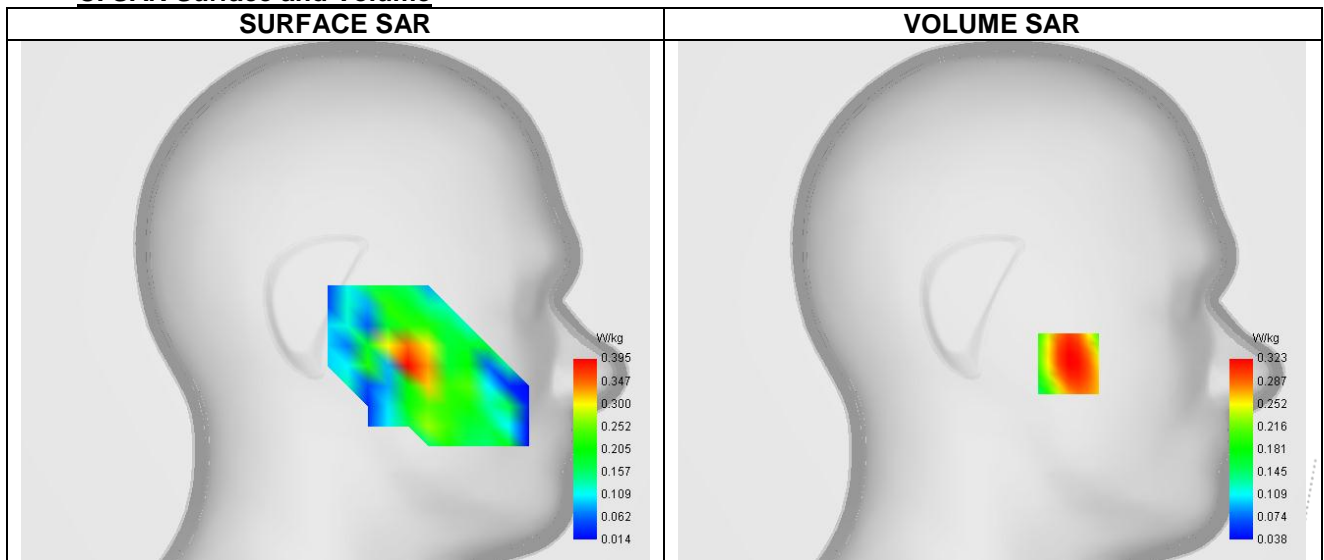
A. Experimental conditions.

Probe	SN 26/23 EPG0420
ConvF	0.81
Area Scan	dx=12mm dy=12mm, Adaptive 1 max
Zoom Scan	7x7x7,dx=5mm dy=5mm dz=5mm
Phantom	Left head
Device Position	Cheek
Band	LTE band 5
Channels	Middle (20525)
Signal	LTE (Crest factor: 1.0)

B. Permittivity

Frequency (MHz)	836.500
Relative permittivity (real part)	42.930
Relative permittivity (imaginary part)	20.225
Conductivity (S/m)	0.920

C. SAR Surface and Volume

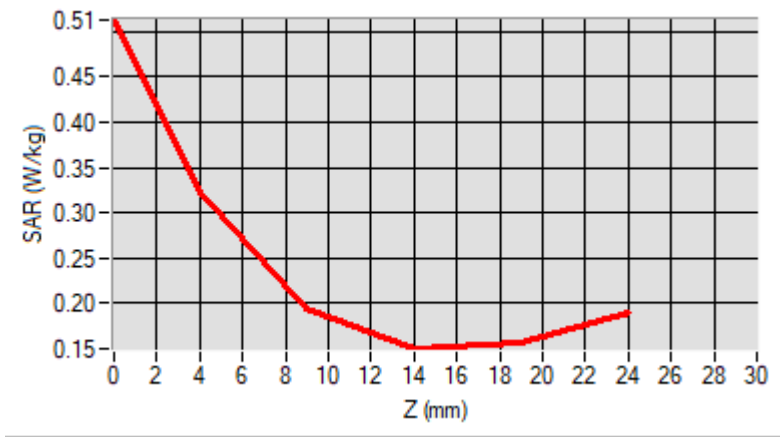
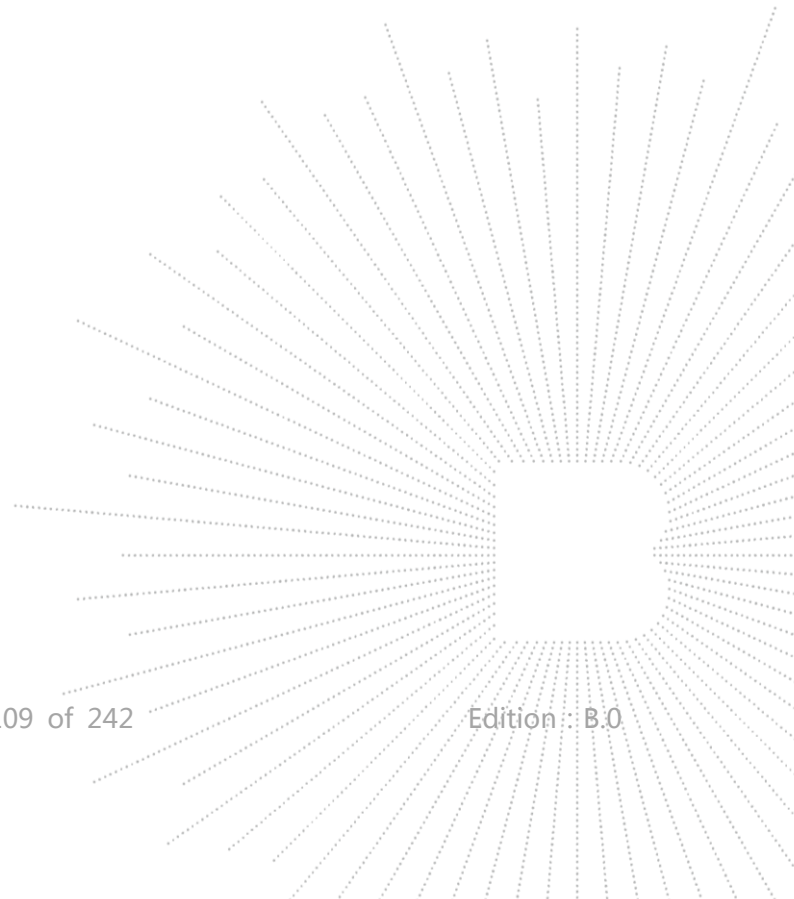
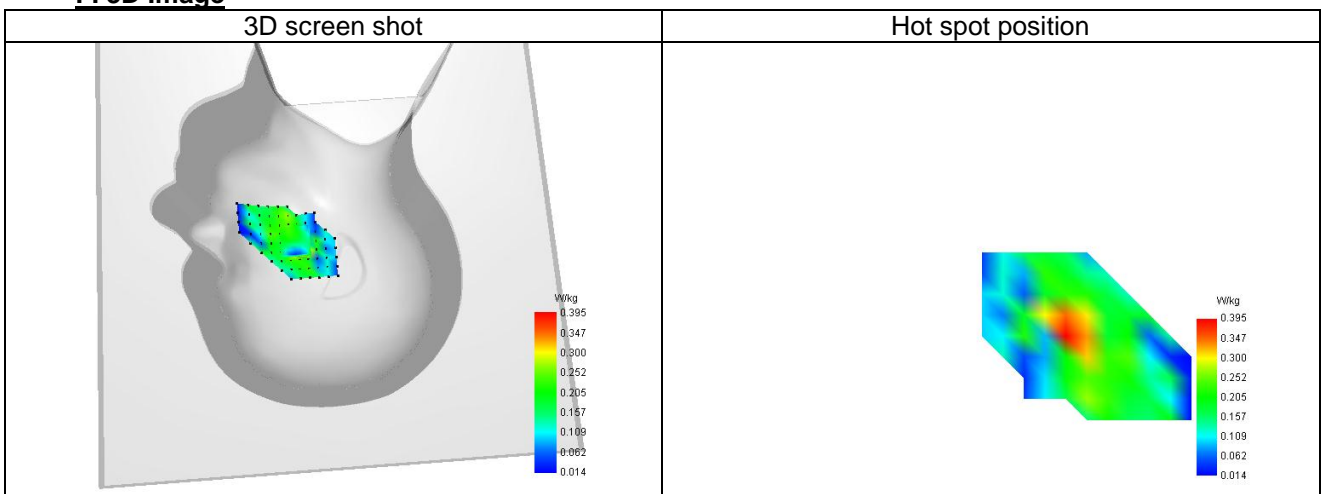


D. SAR 1g & 10g

SAR 10g (W/Kg)	0.216
SAR 1g (W/Kg)	0.411
Variation (%)	0.395
Horizontal validation criteria: minimum distance (mm)	0.000000
Vertical validation criteria: SAR ratio M2/M1 (%)	0.000000

E. Z Axis Scan

Z (mm)	0.00	4.00	9.00	14.00	19.00
SAR (W/Kg)	0.513	0.323	0.194	0.149	0.156


F. 3D Image


Plot 16

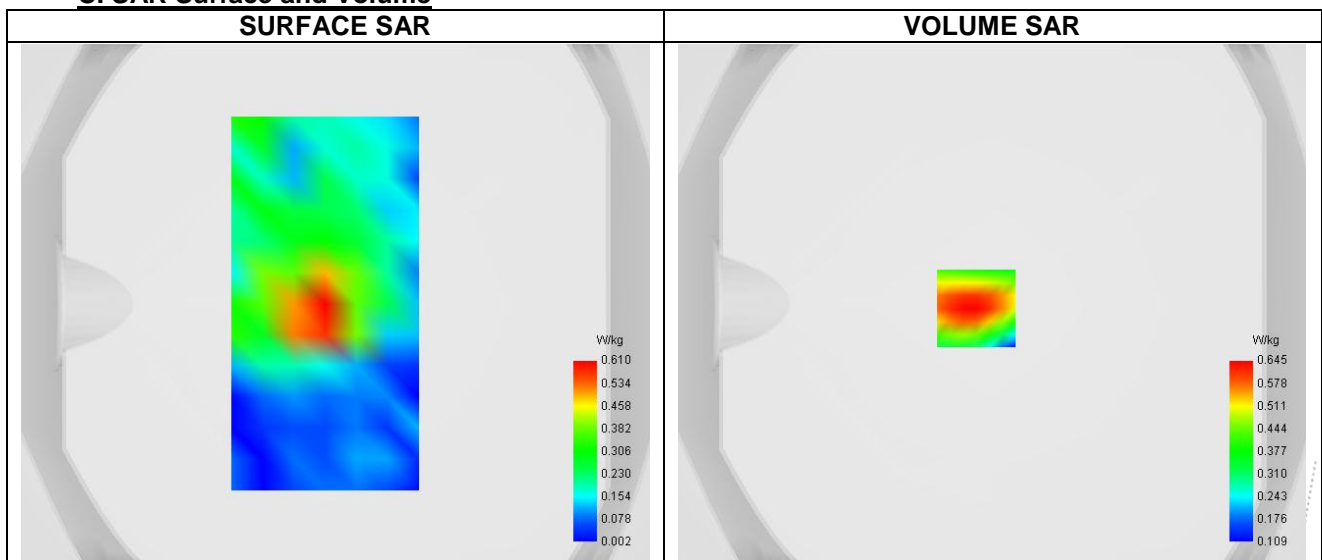
A. Experimental conditions.

Probe	SN 26/23 EPG0420
ConvF	0.81
Area Scan	surf_sam_plan.txt
Zoom Scan	7x7x7,dx=5mm dy=5mm dz=5mm
Phantom	Validation plane
Device Position	Body
Band	LTE band 5
Channels	Middle (20525)
Signal	LTE (Crest factor: 1.0)

B. Permittivity

Frequency (MHz)	836.500
Relative permittivity (real part)	42.930
Relative permittivity (imaginary part)	20.225
Conductivity (S/m)	0.920

C. SAR Surface and Volume



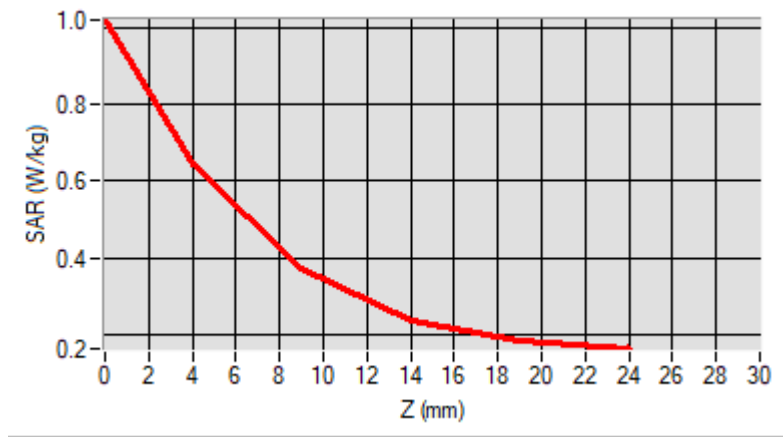
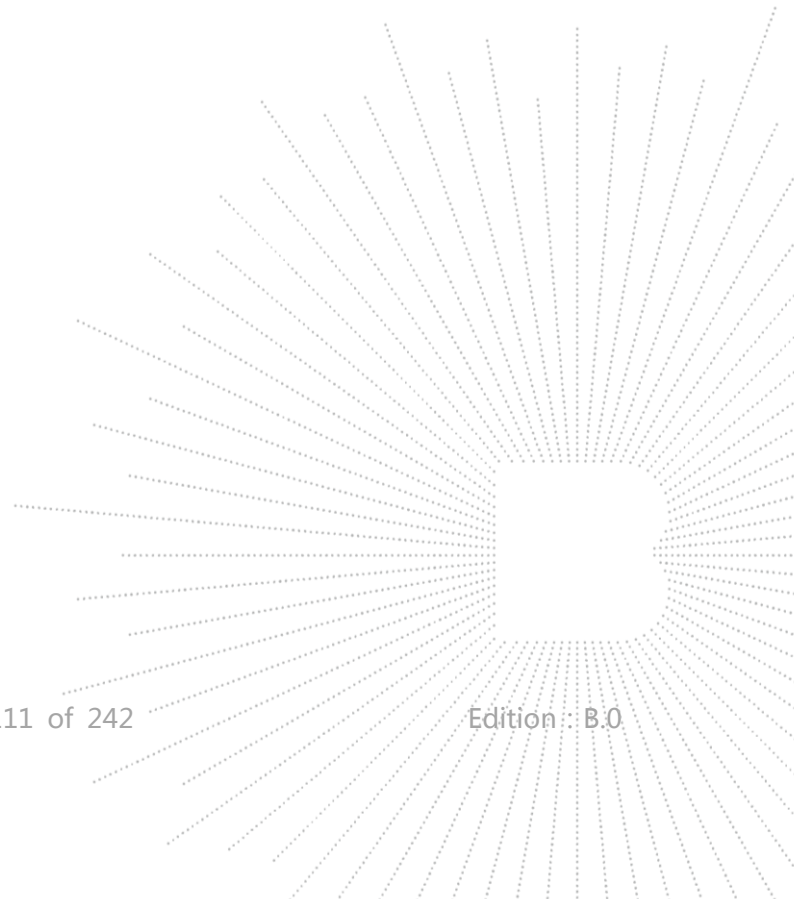
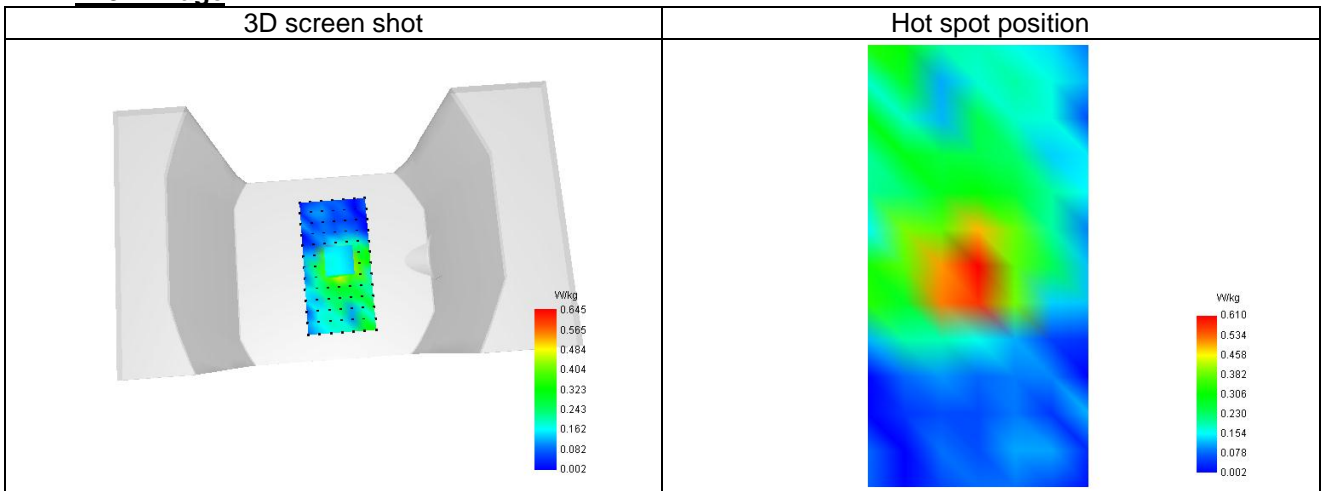
Maximum location: X=-6.00, Y=-2.00 ; SAR Peak: 1.08 W/kg

D. SAR 1g & 10g

SAR 10g (W/Kg)	0.216
SAR 1g (W/Kg)	0.440
Variation (%)	-1.440
Horizontal validation criteria: minimum distance (mm)	0.000000
Vertical validation criteria: SAR ratio M2/M1 (%)	0.000000

E. Z Axis Scan

Z (mm)	0.00	4.00	9.00	14.00	19.00
SAR (W/Kg)	1.019	0.645	0.370	0.238	0.185


F. 3D Image


Plot 17

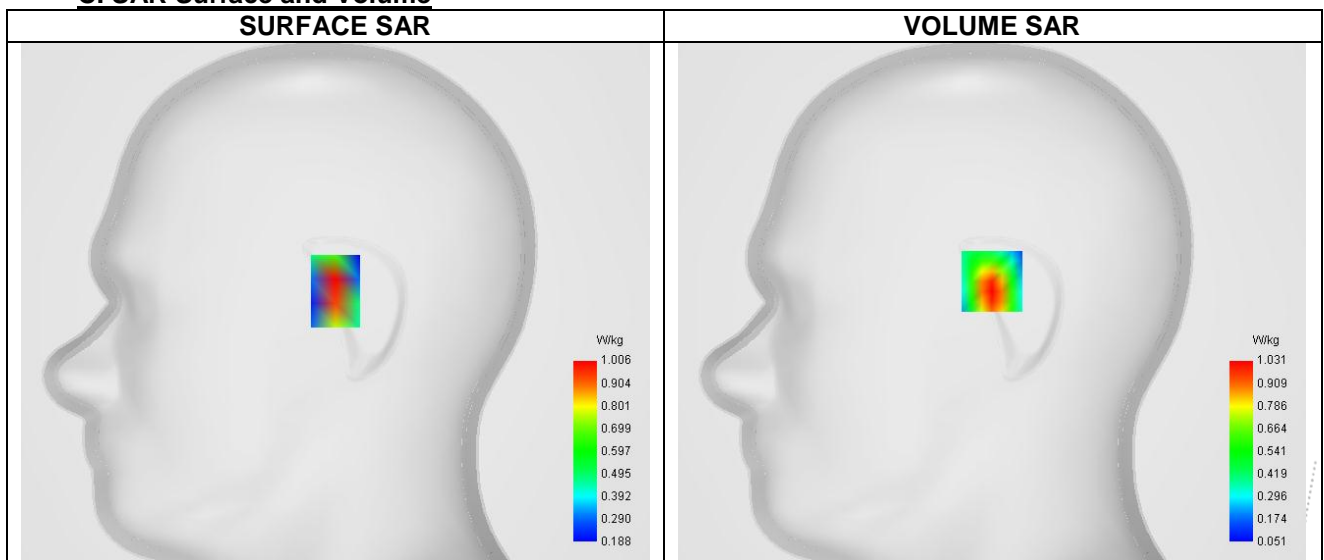
A. Experimental conditions.

Probe	SN 26/23 EPGO420
ConvF	1.03
Area Scan	dx=12mm dy=12mm, Adaptive 1 max
Zoom Scan	7x7x7,dx=5mm dy=5mm dz=5mm
Phantom	Right head
Device Position	Tilt
Band	LTE band 7
Channels	Higher (21350)
Signal	LTE (Crest factor: 1.0)

B. Permittivity

Frequency (MHz)	2560.000
Relative permittivity (real part)	39.292
Relative permittivity (imaginary part)	13.418
Conductivity (S/m)	1.872

C. SAR Surface and Volume



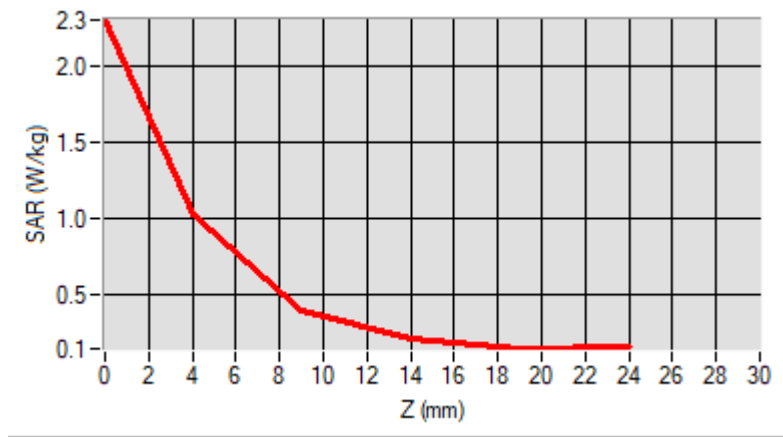
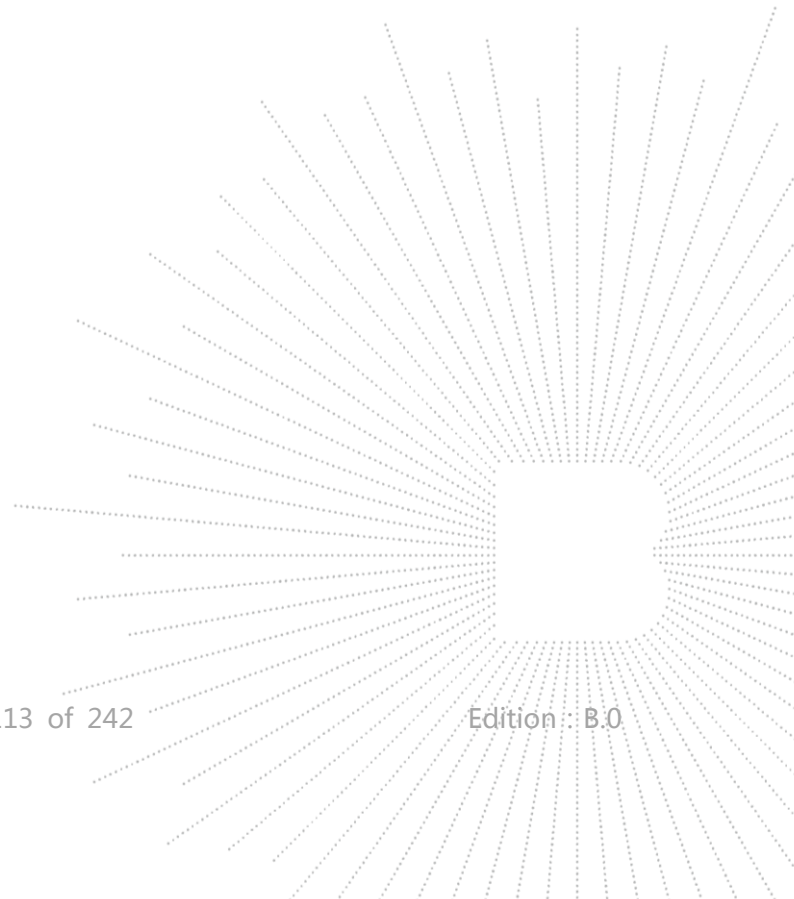
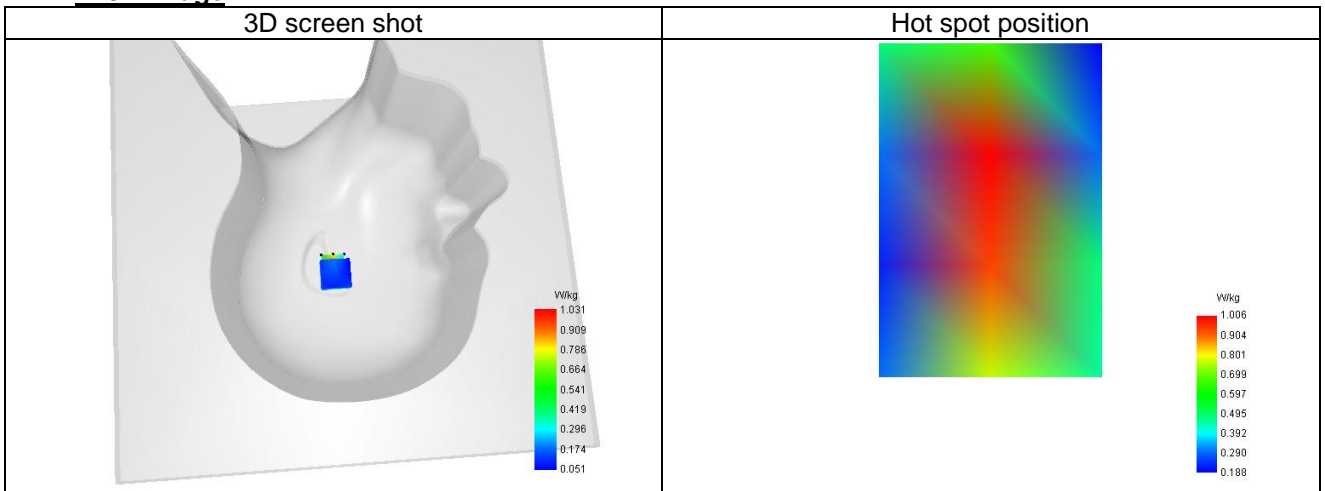
Maximum location: X=0.00, Y=11.00 ; SAR Peak: 1.95 W/kg

D. SAR 1g & 10g

SAR 10g (W/Kg)	0.383
SAR 1g (W/Kg)	0.860
Variation (%)	-1.372
Horizontal validation criteria: minimum distance (mm)	0.000000
Vertical validation criteria: SAR ratio M2/M1 (%)	0.000000

E. Z Axis Scan

Z (mm)	0.00	4.00	9.00	14.00	19.00
SAR (W/Kg)	2.308	1.031	0.397	0.217	0.146


F. 3D Image


Plot 18

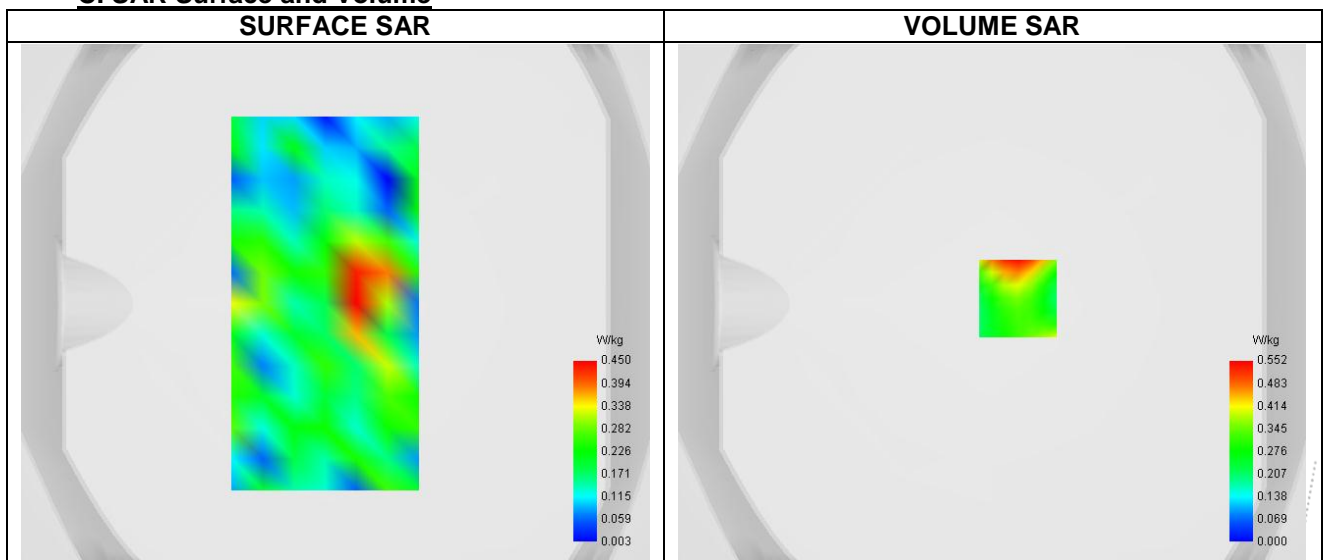
A. Experimental conditions.

Probe	SN 26/23 EPGO420
ConvF	1.03
Area Scan	surf_sam_plan.txt
Zoom Scan	7x7x7,dx=5mm dy=5mm dz=5mm
Phantom	Validation plane
Device Position	Body
Band	LTE band 7
Channels	Higher (21350)
Signal	LTE (Crest factor: 1.0)

B. Permittivity

Frequency (MHz)	2560.000
Relative permittivity (real part)	39.292
Relative permittivity (imaginary part)	13.418
Conductivity (S/m)	1.872

C. SAR Surface and Volume



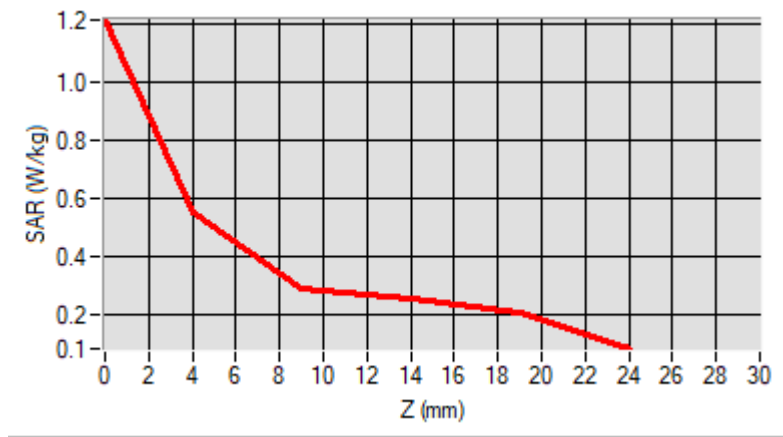
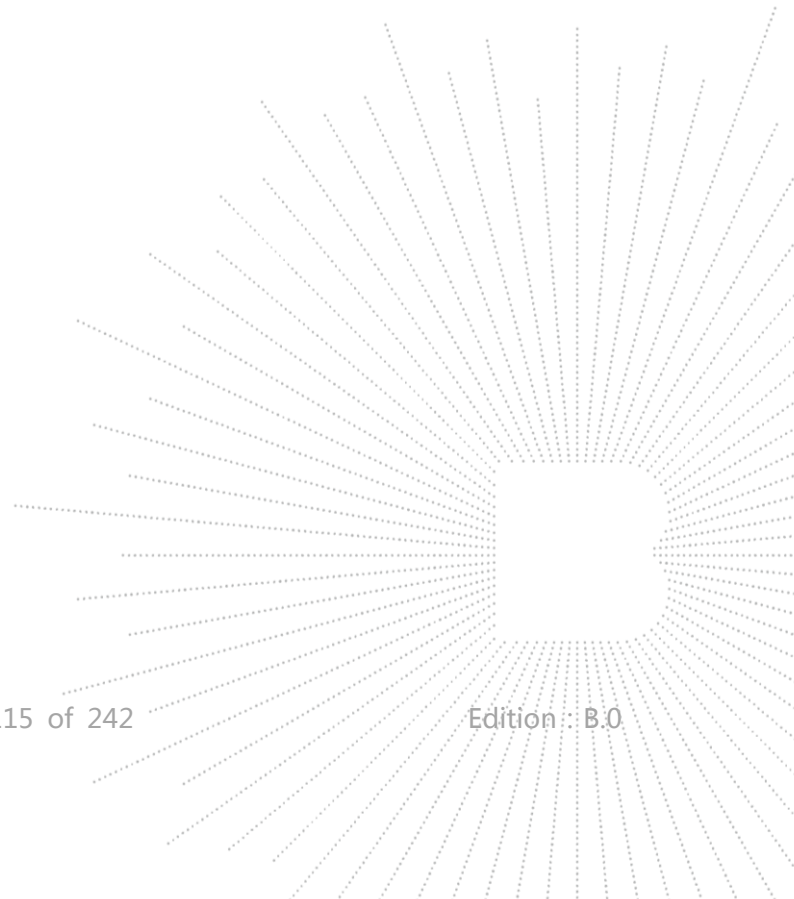
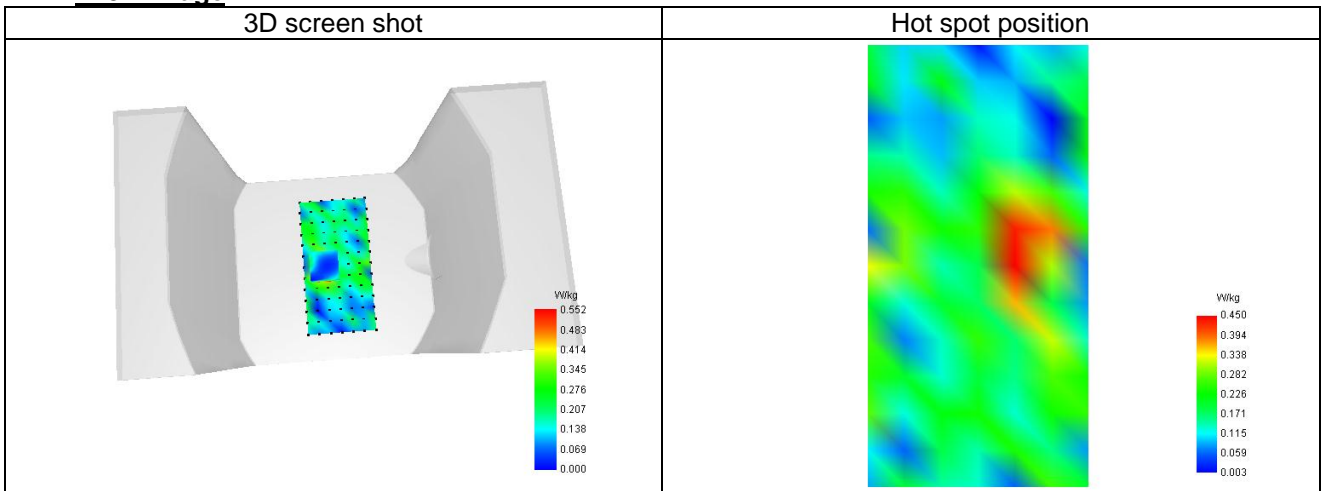
Maximum location: X=10.00, Y=2.00 ; SAR Peak: 0.83 W/kg

D. SAR 1g & 10g

SAR 10g (W/Kg)	0.219
SAR 1g (W/Kg)	0.437
Variation (%)	1.623
Horizontal validation criteria: minimum distance (mm)	0.000000
Vertical validation criteria: SAR ratio M2/M1 (%)	0.000000

E. Z Axis Scan

Z (mm)	0.00	4.00	9.00	14.00	19.00
SAR (W/Kg)	1.212	0.552	0.289	0.254	0.203


F. 3D Image


Plot 19

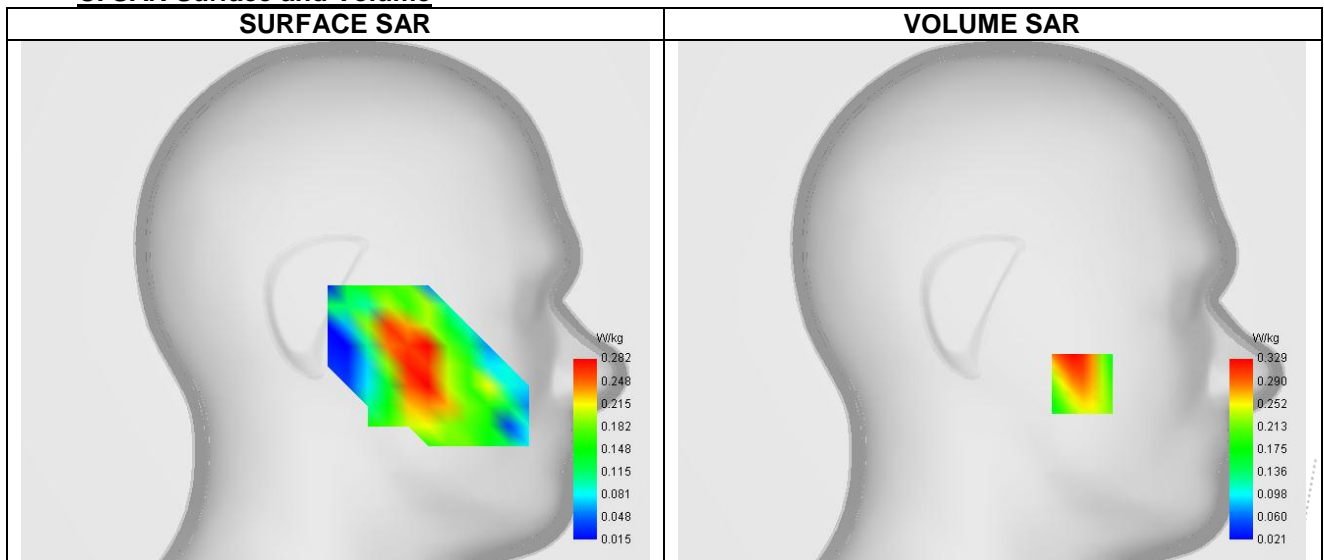
A. Experimental conditions.

Probe	SN 26/23 EPGO420
ConvF	0.80
Area Scan	dx=12mm dy=12mm, Adaptive 1 max
Zoom Scan	7x7x7,dx=5mm dy=5mm dz=5mm
Phantom	Left head
Device Position	Cheek
Band	LTE band 12
Channels	Middle (23095)
Signal	LTE (Crest factor: 1.0)

B. Permittivity

Frequency (MHz)	707.500
Relative permittivity (real part)	40.257
Relative permittivity (imaginary part)	23.264
Conductivity (S/m)	0.924

C. SAR Surface and Volume



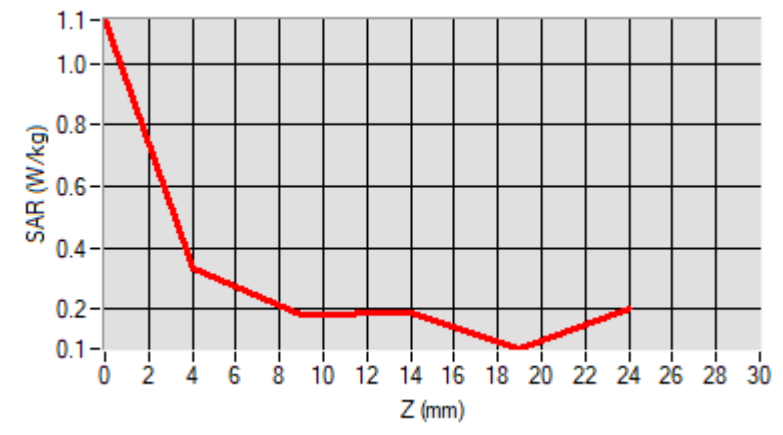
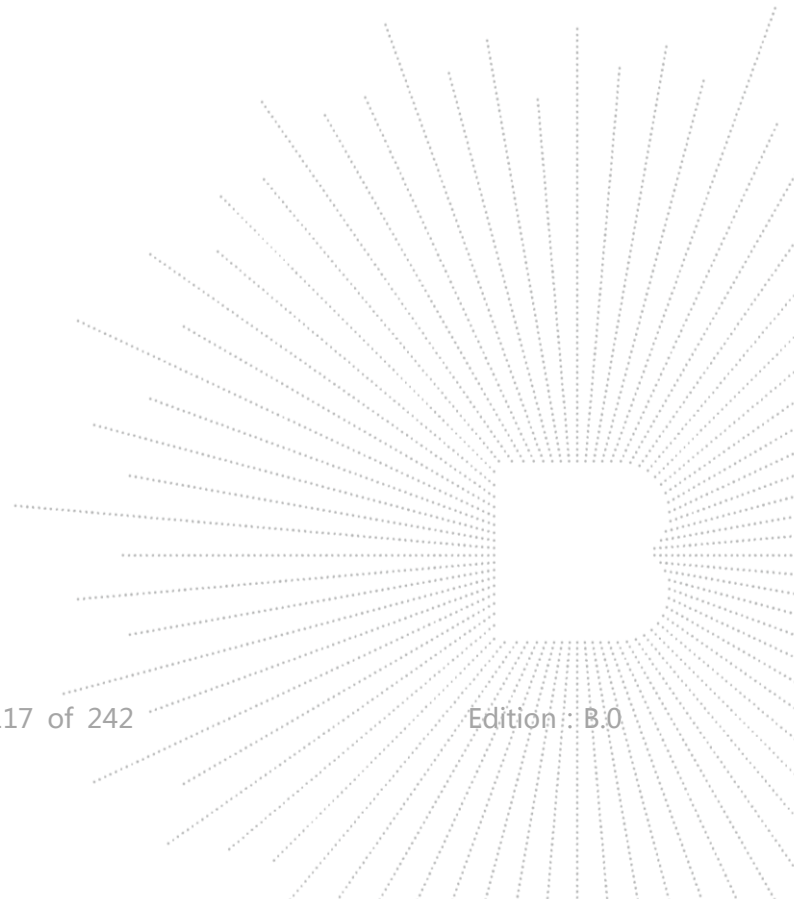
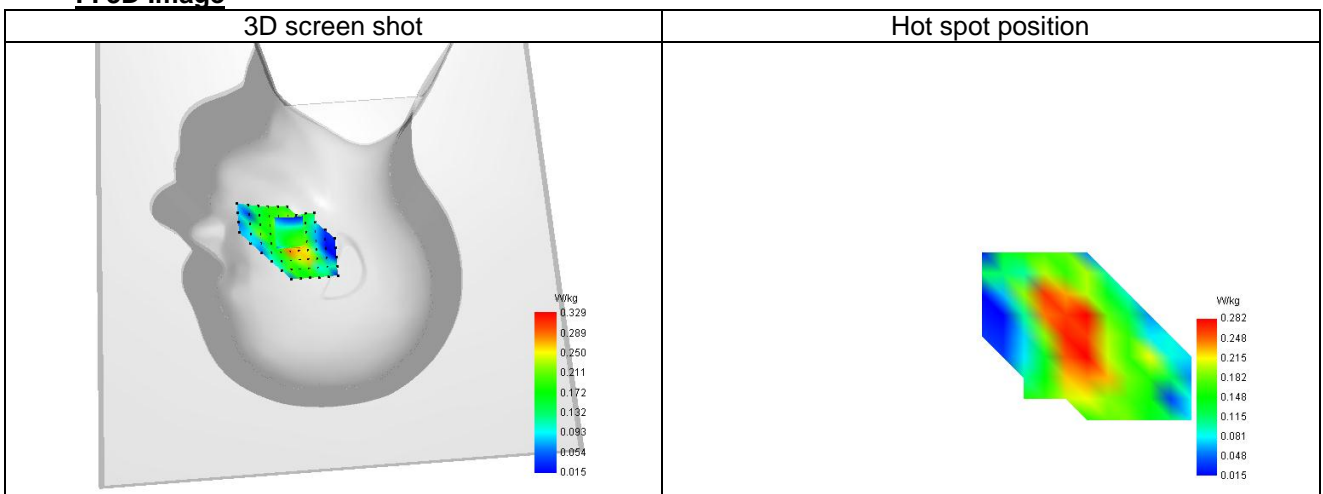
Maximum location: X=-45.00, Y=-41.00 ; SAR Peak: 0.49 W/kg

D. SAR 1g & 10g

SAR 10g (W/Kg)	0.283
SAR 1g (W/Kg)	0.416
Variation (%)	-1.931
Horizontal validation criteria: minimum distance (mm)	0.000000
Vertical validation criteria: SAR ratio M2/M1 (%)	0.000000

E. Z Axis Scan

Z (mm)	0.00	4.00	9.00	14.00	19.00
SAR (W/Kg)	1.141	0.329	0.182	0.186	0.071


F. 3D Image


Plot 20

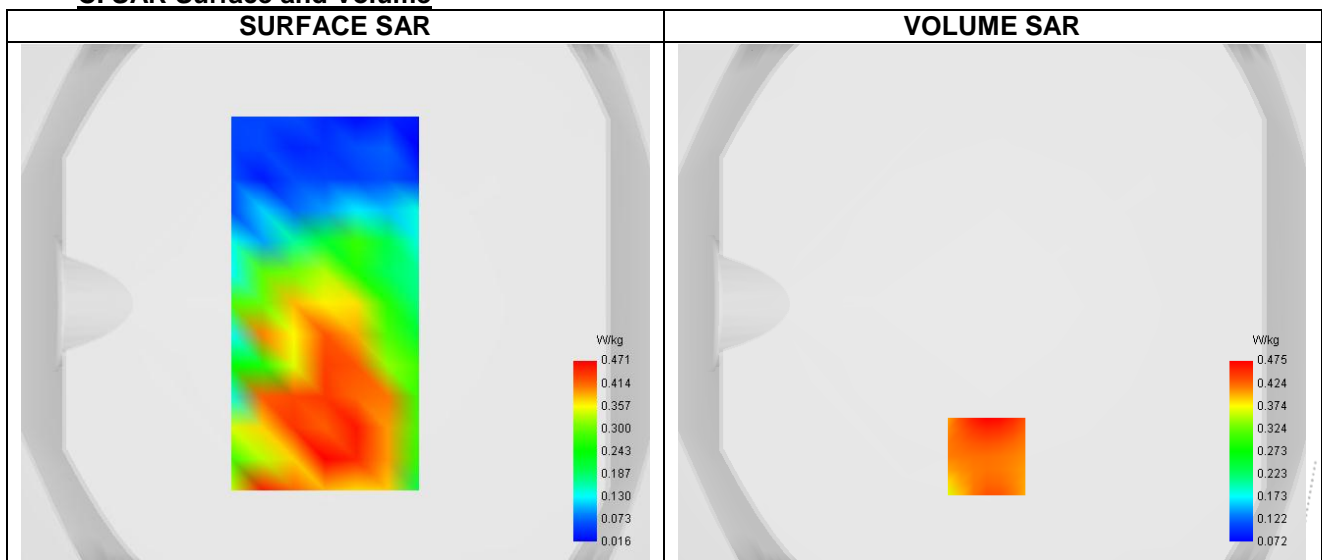
A. Experimental conditions.

Probe	SN 26/23 EPGO420
ConvF	0.80
Area Scan	surf_sam_plan.txt
Zoom Scan	7x7x7,dx=5mm dy=5mm dz=5mm
Phantom	Validation plane
Device Position	Body
Band	LTE band 12
Channels	Middle (23095)
Signal	LTE (Crest factor: 1.0)

B. Permittivity

Frequency (MHz)	707.500
Relative permittivity (real part)	40.257
Relative permittivity (imaginary part)	23.264
Conductivity (S/m)	0.924

C. SAR Surface and Volume



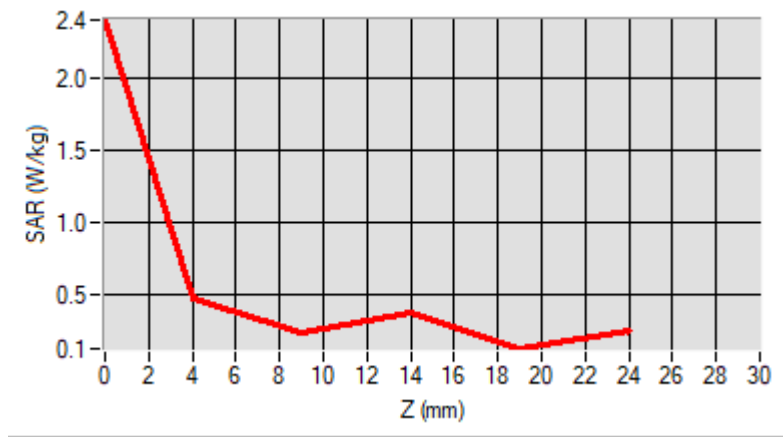
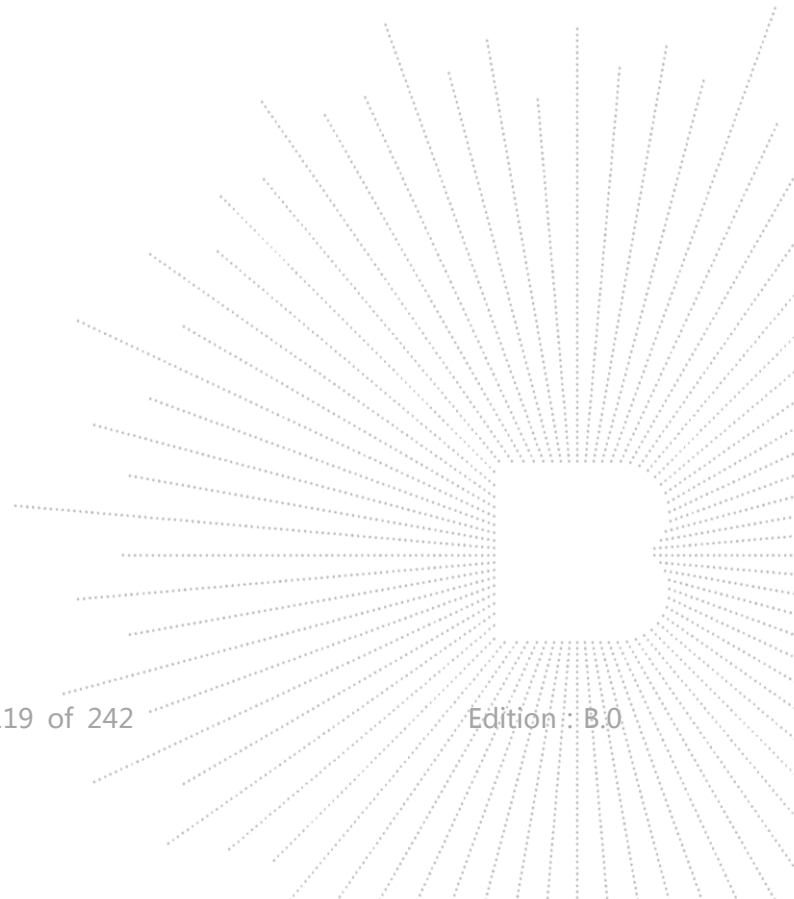
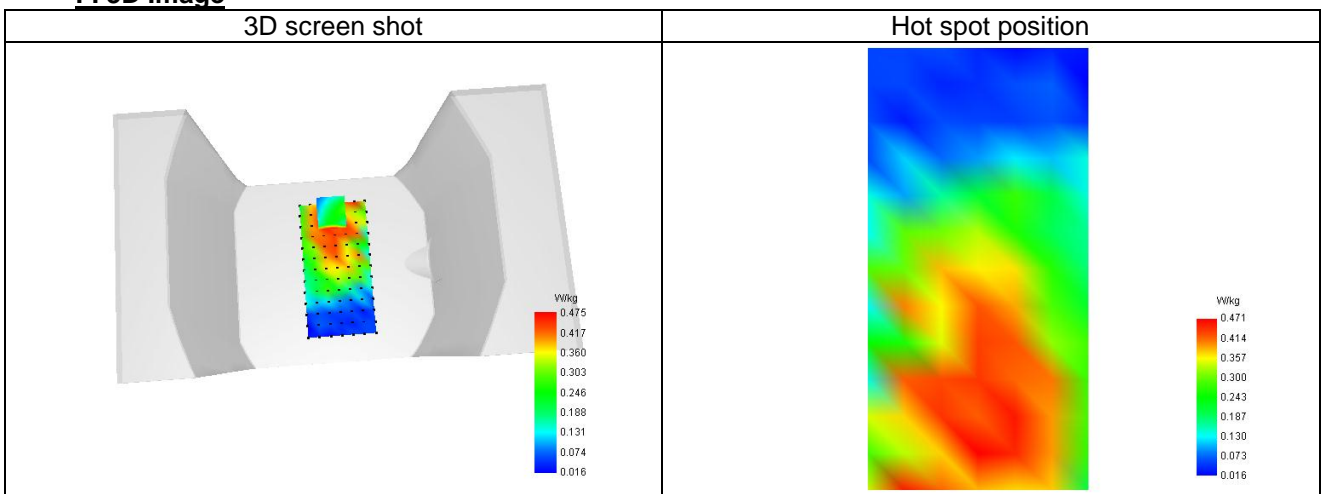
Maximum location: X=-2.00, Y=-59.00 ; SAR Peak: 0.72 W/kg

D. SAR 1g & 10g

SAR 10g (W/Kg)	0.297
SAR 1g (W/Kg)	0.468
Variation (%)	1.377
Horizontal validation criteria: minimum distance (mm)	0.000000
Vertical validation criteria: SAR ratio M2/M1 (%)	0.000000

E. Z Axis Scan

Z (mm)	0.00	4.00	9.00	14.00	19.00
SAR (W/Kg)	2.409	0.475	0.238	0.375	0.127


F. 3D Image


Plot 21

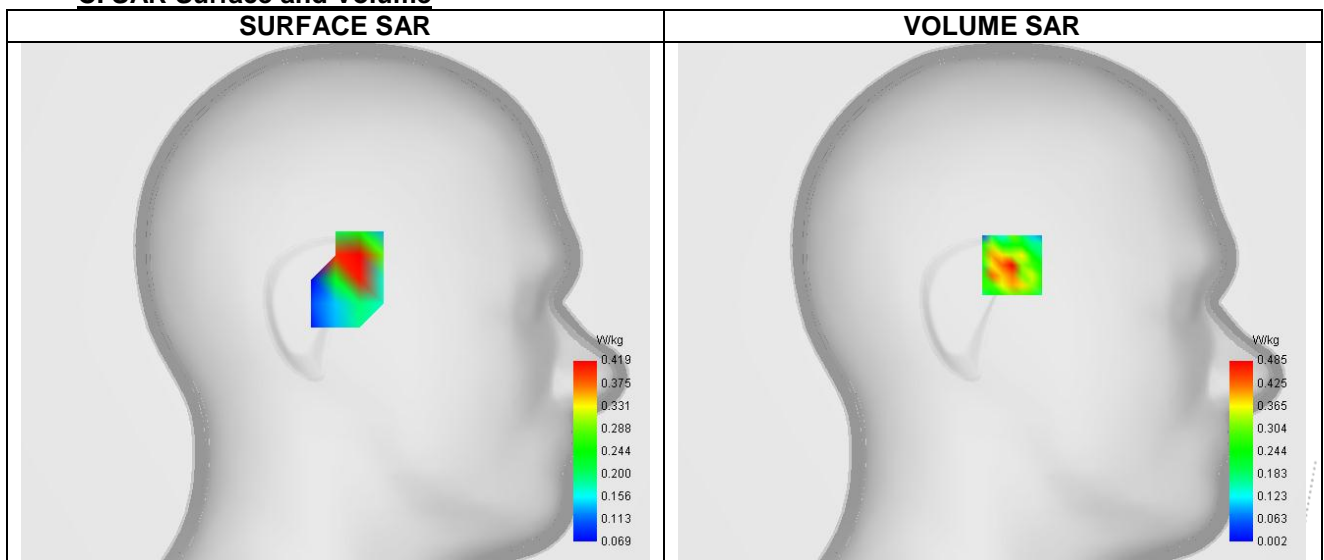
A. Experimental conditions.

Probe	SN 26/23 EPGO420
ConvF	1.11
Area Scan	dx=12mm dy=12mm, Adaptive 1 max
Zoom Scan	7x7x7,dx=5mm dy=5mm dz=5mm
Phantom	Left head
Device Position	Tilt
Band	IEEE 802.11b ISM
Channels	Middle (6)
Signal	IEEE802.b (Crest factor: 1.0)

B. Permittivity

Frequency (MHz)	2437.000
Relative permittivity (real part)	39.085
Relative permittivity (imaginary part)	13.207
Conductivity (S/m)	1.841

C. SAR Surface and Volume



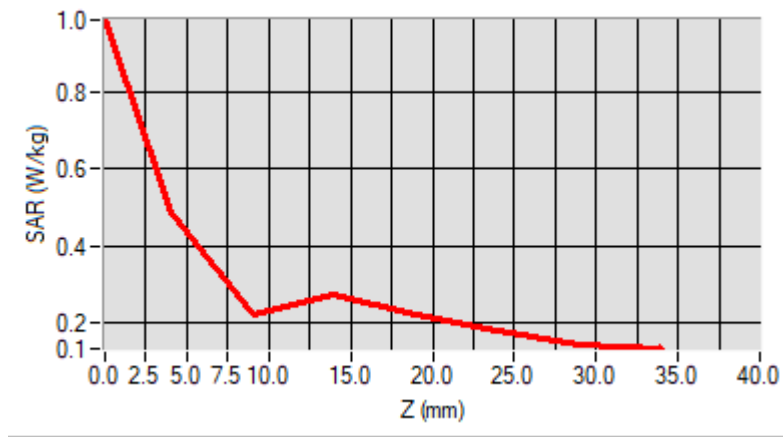
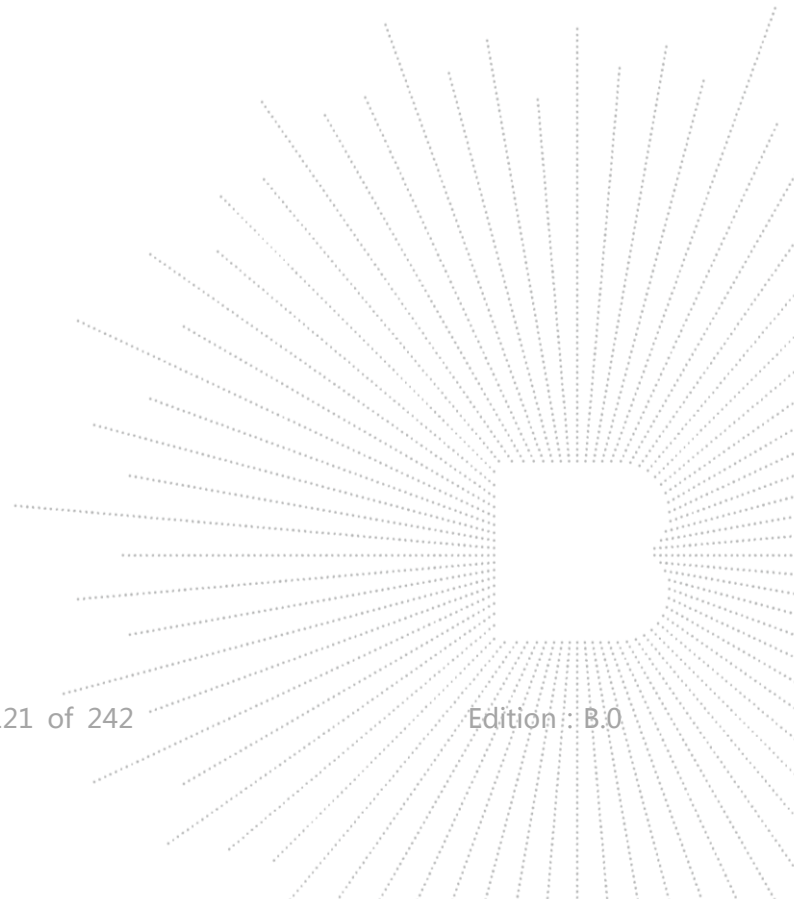
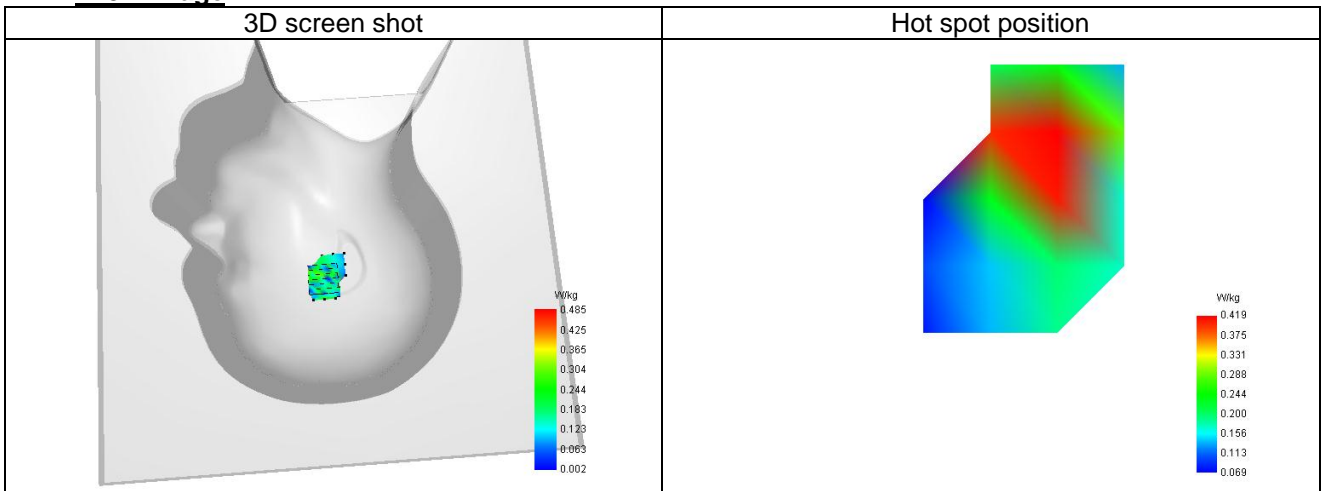
Maximum location: X=-10.00, Y=19.00 ; SAR Peak: 0.99 W/kg

D. SAR 1g & 10g

SAR 10g (W/Kg)	0.179
SAR 1g (W/Kg)	0.360
Variation (%)	2.666
Horizontal validation criteria: minimum distance (mm)	0.000000
Vertical validation criteria: SAR ratio M2/M1 (%)	0.000000

E. Z Axis Scan

Z (mm)	0.00	4.00	9.00	14.00	19.00	24.00	29.00
SAR (W/Kg)	0.989	0.485	0.221	0.273	0.221	0.180	0.146


F. 3D Image


Plot 22

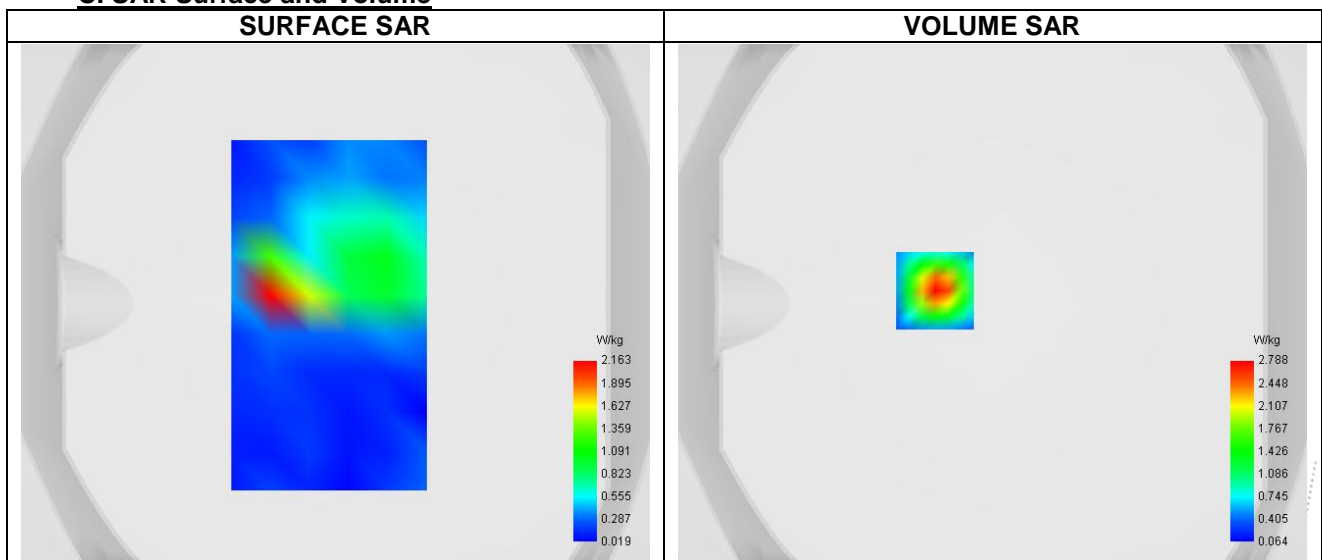
A. Experimental conditions.

Probe	SN 26/23 EPGO420
ConvF	1.11
Area Scan	surf_sam_plan.txt
Zoom Scan	7x7x7,dx=5mm dy=5mm dz=5mm
Phantom	Validation plane
Device Position	Body
Band	IEEE 802.11b ISM
Channels	Middle (6)
Signal	IEEE802.b (Crest factor: 1.0)

B. Permittivity

Frequency (MHz)	2437.000
Relative permittivity (real part)	39.085
Relative permittivity (imaginary part)	13.207
Conductivity (S/m)	1.841

C. SAR Surface and Volume



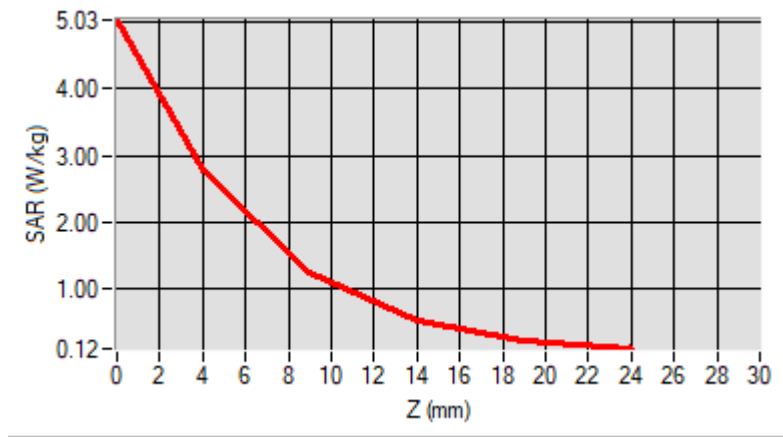
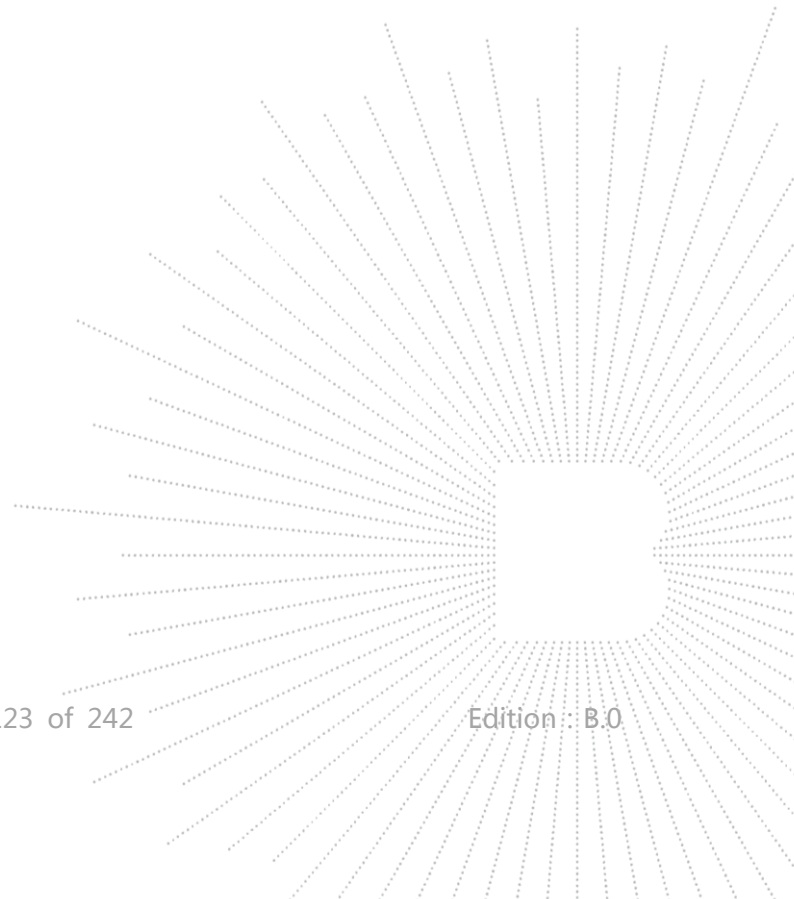
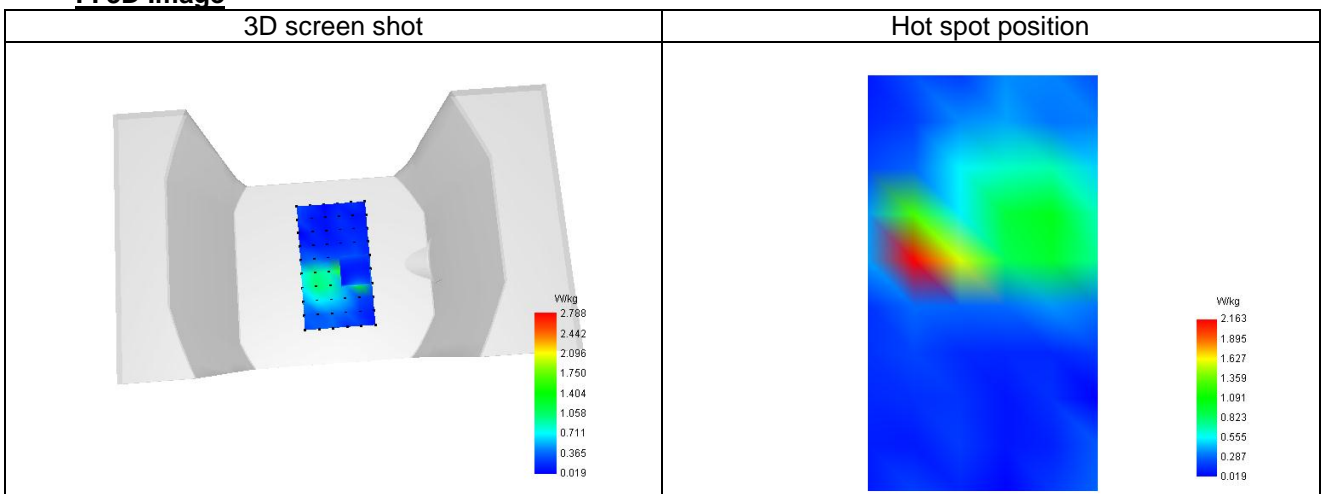
Maximum location: X=10.00, Y=-12.00 ; SAR Peak: 0.43 W/kg

D. SAR 1g & 10g

SAR 10g (W/Kg)	0.143
SAR 1g (W/Kg)	0.319
Variation (%)	-2.095
Horizontal validation criteria: minimum distance (mm)	0.000000
Vertical validation criteria: SAR ratio M2/M1 (%)	0.000000

E. Z Axis Scan

Z (mm)	0.00	4.00	9.00	14.00	19.00
SAR (W/Kg)	0.567	0.177	0.118	0.135	0.082


F. 3D Image


Plot 23

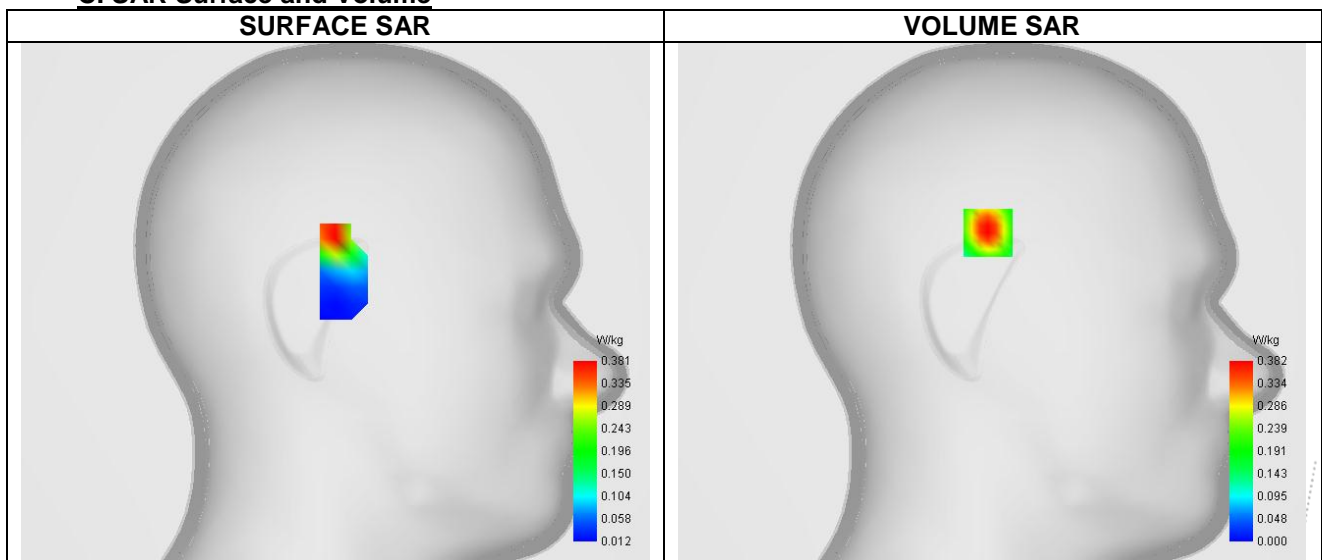
A. Experimental conditions.

Probe	SN 26/23 EPGO420
ConvF	1.18
Area Scan	dx=8mm dy=8mm, Adaptive 1 max
Zoom Scan	7x7x12,dx=4mm dy=4mm dz=2mm
Phantom	Left head
Device Position	Cheek
Band	IEEE 802.11a U-NII-1
Channels	Lower (36)
Signal	IEEE802.a (Crest factor: 1.0)

B. Permittivity

Frequency (MHz)	5180.000
Relative permittivity (real part)	36.294
Relative permittivity (imaginary part)	16.130
Conductivity (S/m)	4.488

C. SAR Surface and Volume



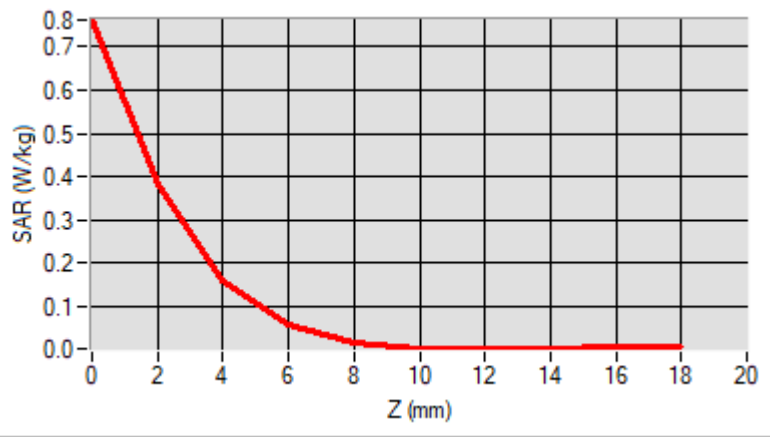
Maximum location: X=2.00, Y=35.00 ; SAR Peak: 1.37 W/kg

D. SAR 1g & 10g

SAR 10g (W/Kg)	0.190
SAR 1g (W/Kg)	0.376
Variation (%)	-0.673
Horizontal validation criteria: minimum distance (mm)	0.000000
Vertical validation criteria: SAR ratio M2/M1 (%)	0.000000

E. Z Axis Scan

Z (mm)	0.00	2.00	4.00	6.00	8.00	10.00	12.00	14.00	16.00
SAR (W/Kg)	0.762	0.382	0.160	0.055	0.015	0.002	0.002	0.001	0.004


F. 3D Image
