

**ShenZhen QiXinTongDa Technology Co.,Ltd.**

# **Antenna Test Report**

**Client Name: TIANRUIXIANG**

**Project Name: C35**

**FrequencyBand:**

**DATE: 2023-07-18**

Antenna operating frequency: 2400MHz-2500MHz  
5150MHz-5850MHz

# 1.Test Project

|                              | Test Project                   | Equipment                          |
|------------------------------|--------------------------------|------------------------------------|
| 1. S Parameter               | 1. Return Loss (RL)<br>2. VSWR | Network Analyzer:<br>Agilent 5071B |
| 2. RF Test<br><br>(2G+3G+4G) | 1. power<br>2. level           | Comprehensive Test:<br>CMW500/8960 |

## 2. Test Equipment



Agilent 5071B (S Parameter (RL/VSWR) Test Equipment)

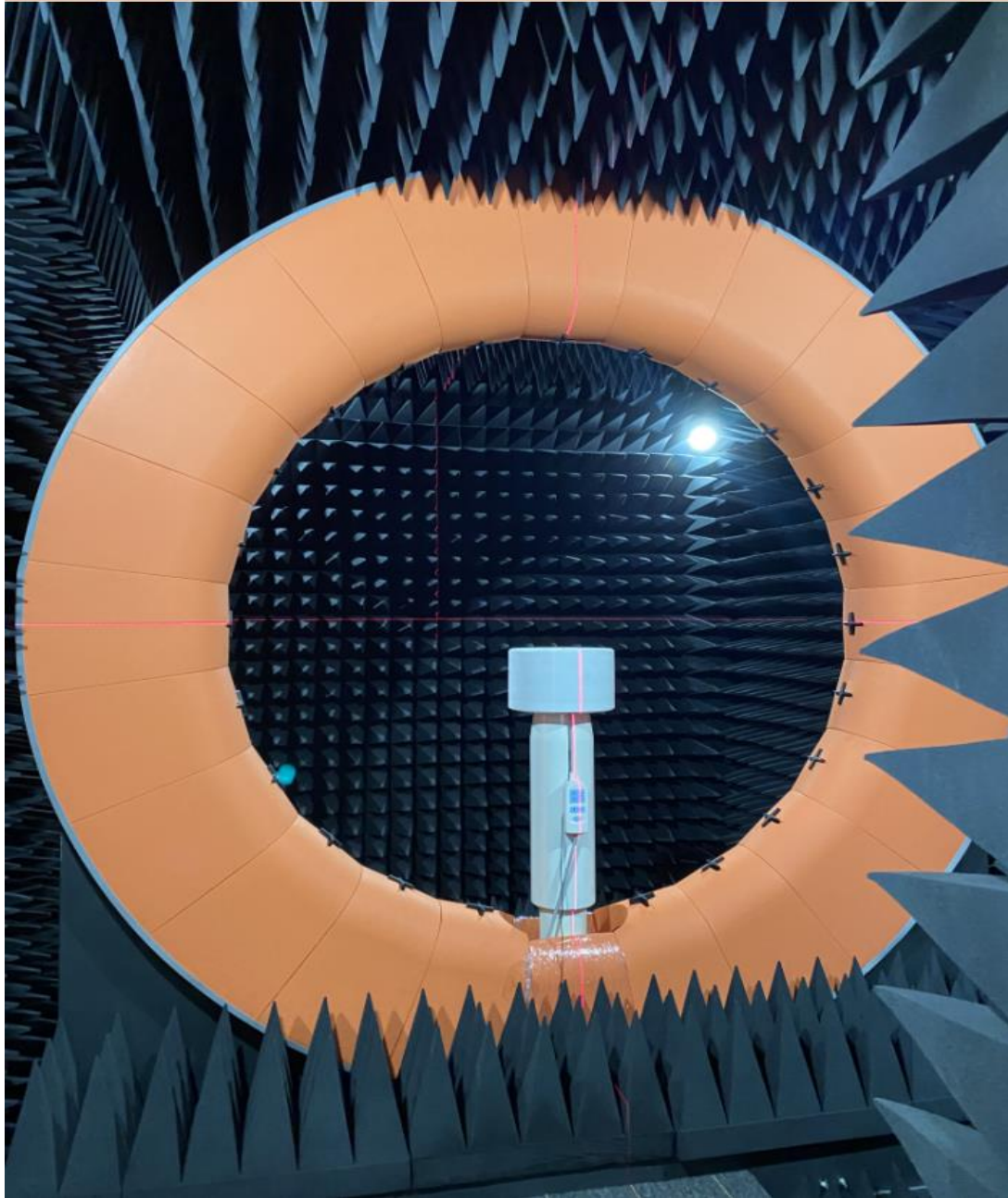


Agilent 8960 (2G/3G Test Equipment)



CMW 500 (2G/3G/4G Test Equipment)

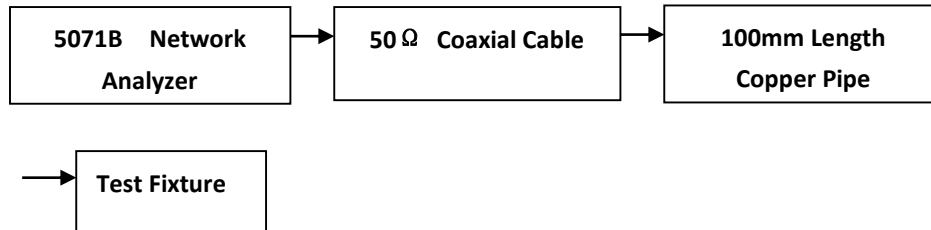
### 3. TestEnvironment



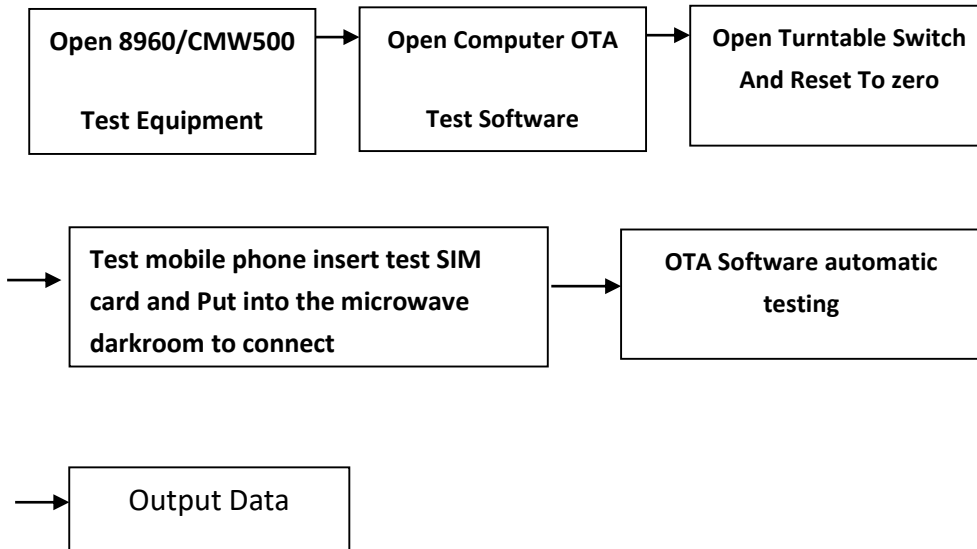
Microwave Anechoic Chamber

## 4. Test Steps

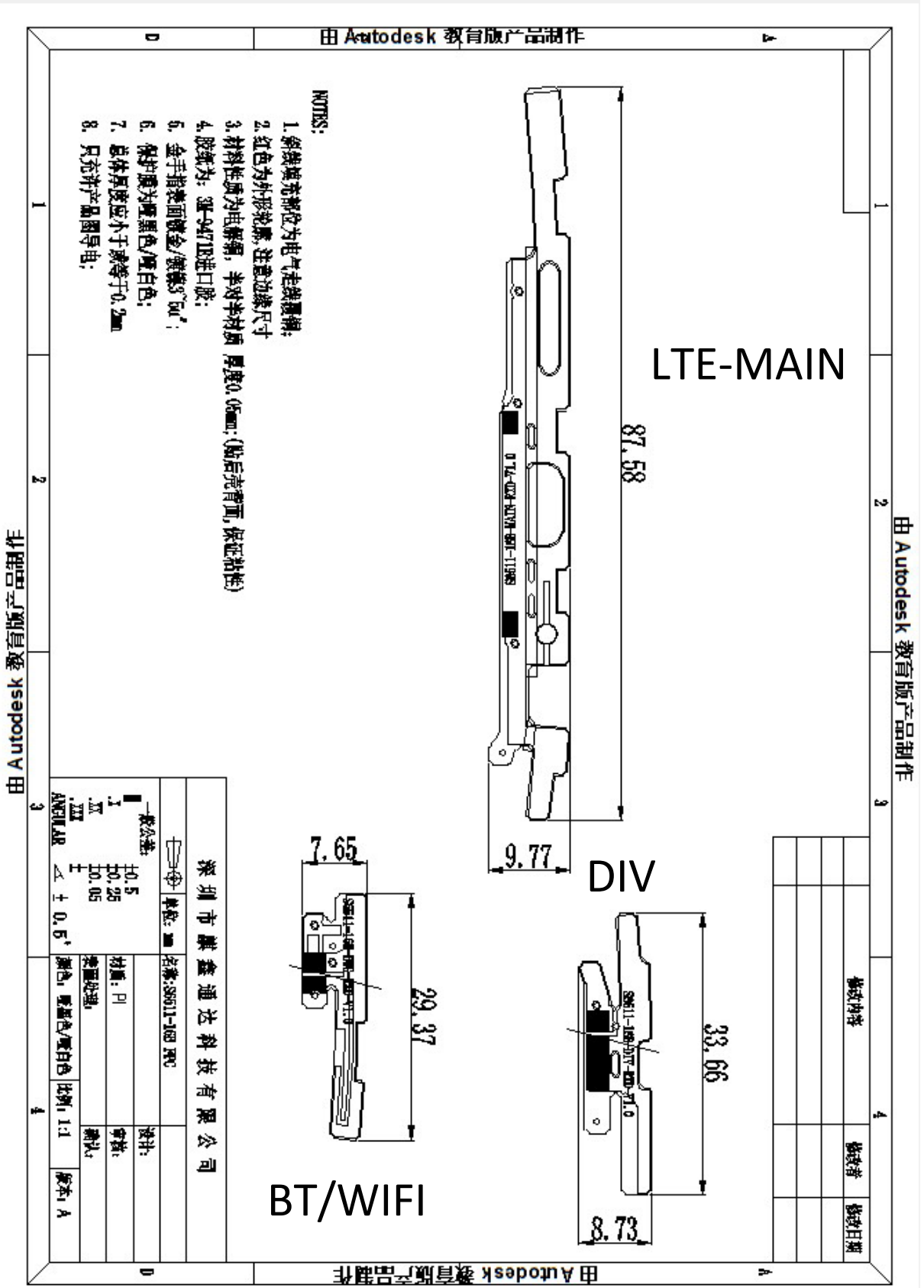
### Passive VSWR/RL Test Steps:



### Active TRP/TIS Test Steps:



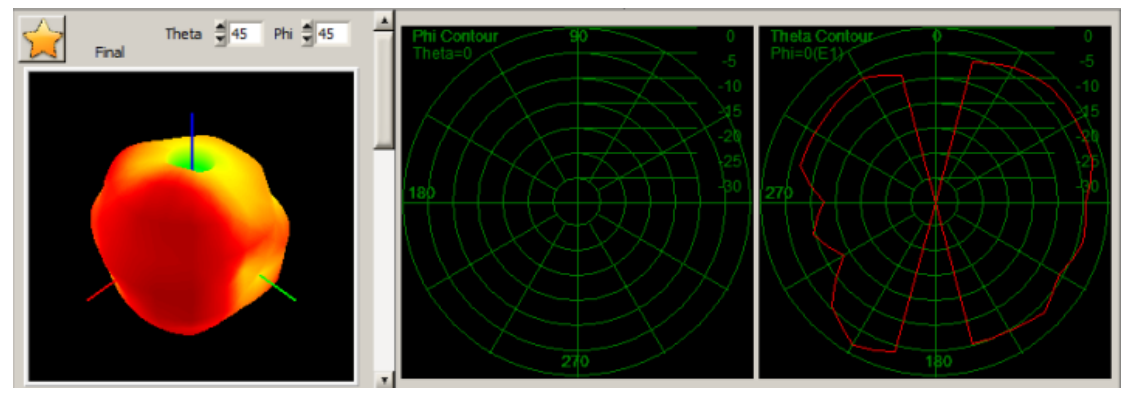
# 5. Antenna Dimensions



## 6. Antenna Gain

| frequency | Max Gain | Efficiency |
|-----------|----------|------------|
| 2450MHz   | 0.22     | 36%        |
| 5850MHz   | 0.05     | 32%        |

2450MHz



5850MHz

