



Bison2021 Smart phone

User Manual

Please read this guide carefully before use and keep it for future use.

1. For your safety

Please read this manual before using the cell phone to ensure your safety and proper use.



SWITCH OFF IN HOSPITALS

Please abide by relevant provisions or regulations. Please turn off your mobile phone near medical equipment.



SWITCH OFF WHEN REFUELING

Don't use the phone at a refueling point. Don't use near fuel or chemicals.



SIM CARDS AND TF CARD ARE PORTABLE

Keep your phone, phone parts and accessories out of children's reach.



BATTERY

Please do not destroy or damage the battery, it can be dangerous and cause fire. Please do not throw battery in fire to avoid hazard. When battery cannot be used, please dispose in safe environment. Do not try to dismantle the battery. If the battery or authorized charger is broken or old, please stop using them, and replace with certified genuine battery.

For first time using, please discharge completely and charge the battery in 100% full and continue charging one more hour with authorized charger.



USE QUALITY EQUIPMENT

Use authorized equipment to avoid danger.



ROAD SAFETY COMES FIRST

Give full attention while driving, Park before using your phone. Please follow traffic rules of local city town.



INTERFERENCE

All wireless devices may be susceptible to cause interference, which could affect performance.

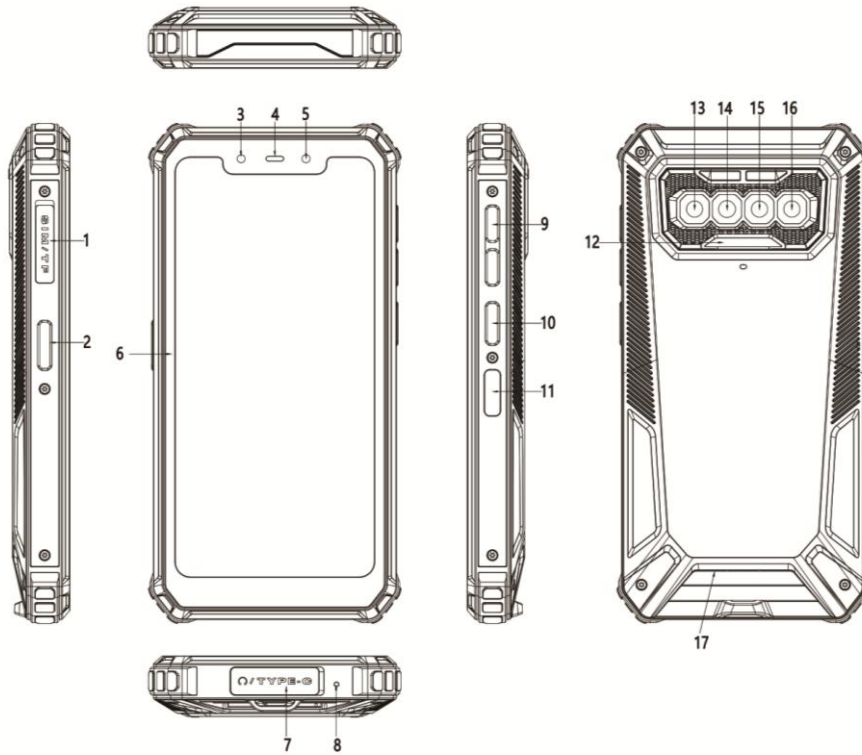


SWITCH OFF IN AIRCRAFT

Wireless devices can cause interference in aircraft. It's not only dangerous but also illegal to use mobile phone in an aircraft.

2. Learn about the phone

- Overview



- | | | | |
|---|-------------------------|----|-------------------|
| 1 | Card Tray | 10 | Power Key |
| 2 | F150 Key | 11 | Fingerprint |
| 3 | Light Sensor | 12 | Photo flash |
| 4 | Headset | 13 | Depth Camera (2M) |
| 5 | Front Camera (8M) | 14 | Main camera (13M) |
| 6 | Touch screen | 15 | VGA camera |
| 7 | Headset / USB interface | 16 | Macro camera (2M) |
| 8 | Microphone | 17 | Speaker |
| 9 | Volume Key | | |

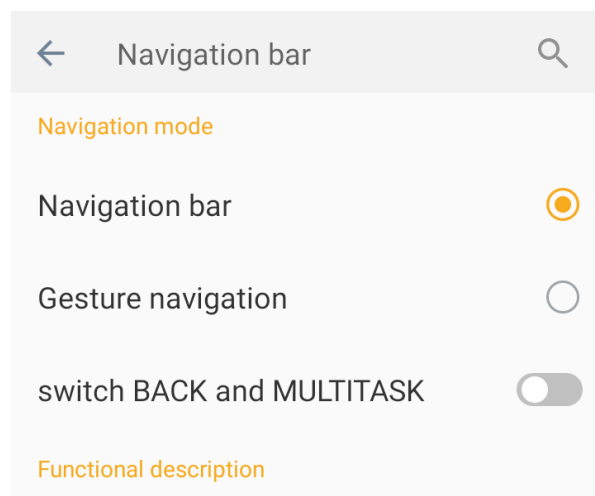
- Function Keys

Keys	Functions
Power Key	<ul style="list-style-type: none"> • Press to turn on/off the screen. • Press and hold to reboot, power off the phone, and screenshot.

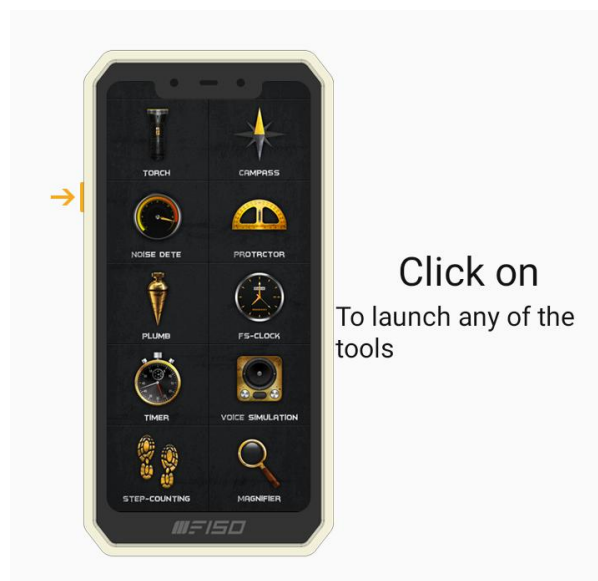
Volume Key	<ul style="list-style-type: none"> • Press to adjust the volume of device.
Home Key (on the screen)	<ul style="list-style-type: none"> • Tap to return to Home screen.
Back Key (on the screen)	<ul style="list-style-type: none"> • Tap to return to the previous screen.
Fingerprint key	<ul style="list-style-type: none"> • Press to unlock the phone.
F150 Key	<ul style="list-style-type: none"> • Press and hold to enter F150 mode. • Click 5 times to enter SOS mode.

✓ **Note**

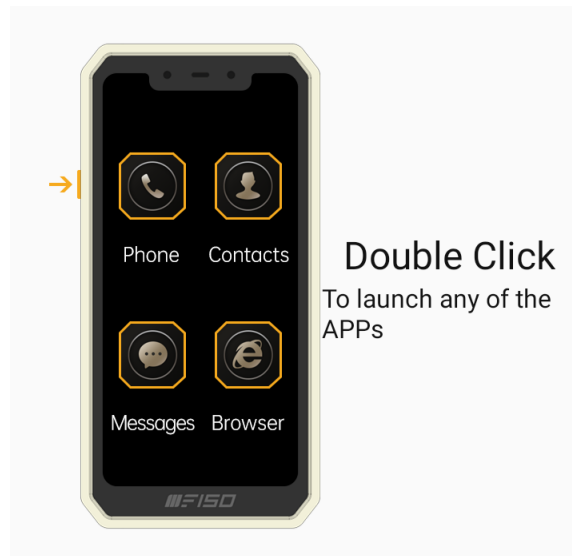
Multi Task Key and **Back Key** can be exchanged the layout in **Settings --> Navigation bar**. You can customize the navigation bar.



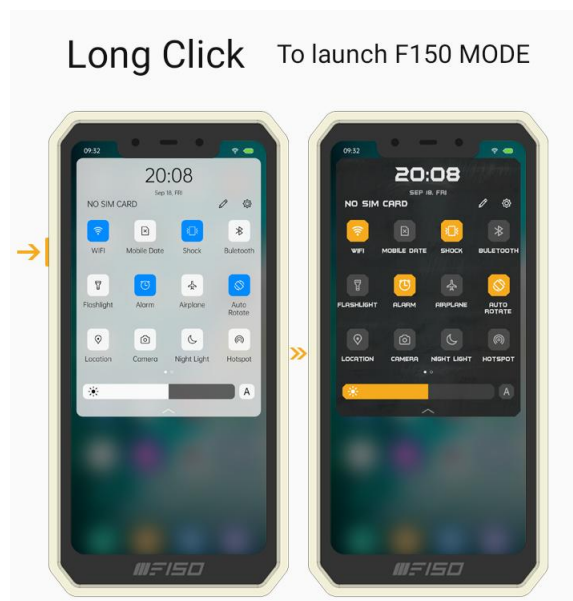
Button customization in **settings-->Single click settings** to quickly open toolbox tools.



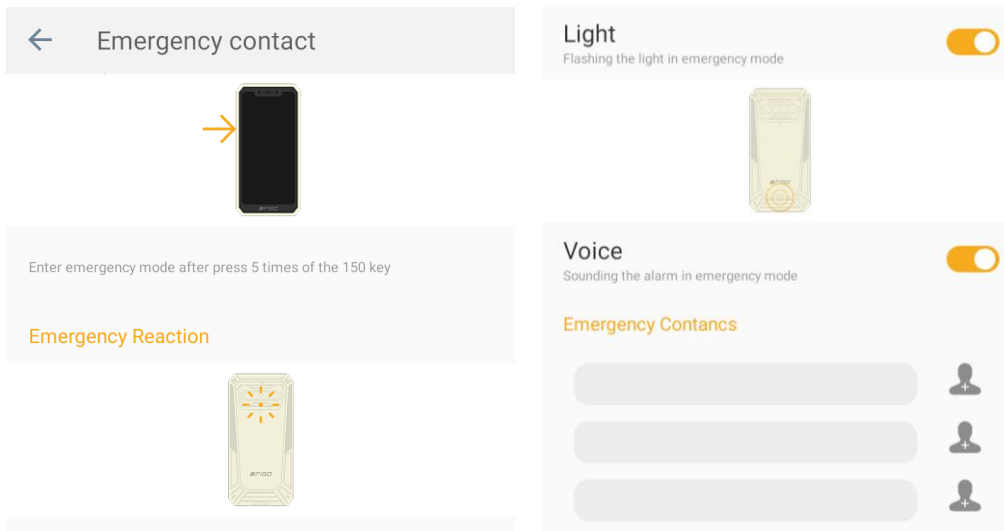
Button customization in **settings**-->Double click the setting to quickly open any application.



Button customization in **settings** --> Long press to enter F150 mode.



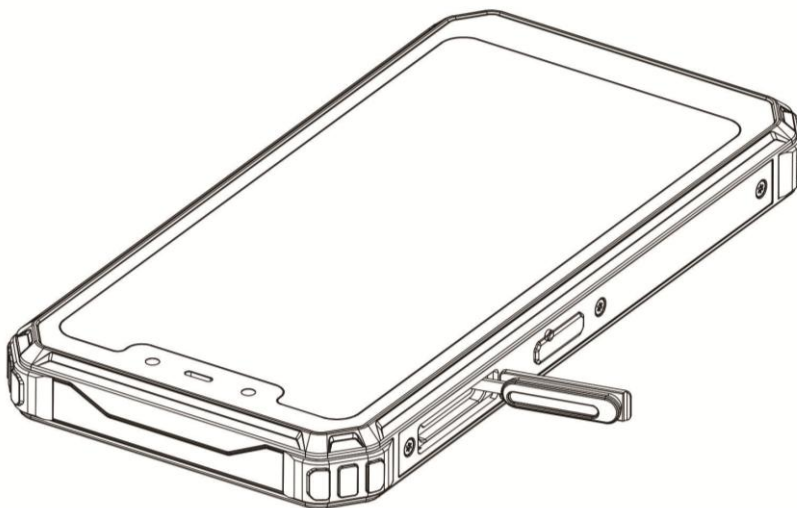
Emergency contact in the **settings**-->Press the F150 button 5 times to enter the emergency call state; when turned on, the flash will start and the phone will play an emergency alarm. If you can add contacts, your phone will call them automatically until getting through.



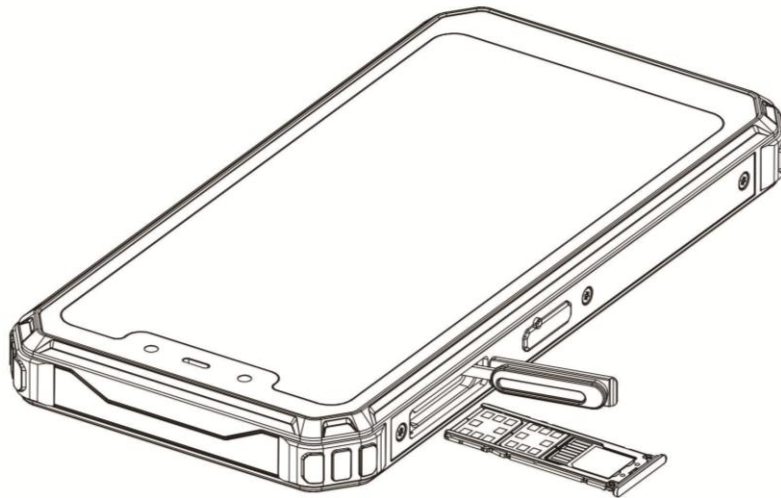
3. Before using

The phone is a Dual SIM mobile that allows you to use two mobile networks.

- **Insert SIM cards and TF card**
- Stick into the pin hole with eject tool, and then card tray will be out of phone.



- 1) Insert the Nano SIM cards and TF card to the card slots correctly.
Card 1 supports Nano SIM1 card.
Card 2 supports Nano SIM2 card.
Card 3 supports TF card.



✓ **Note:**

- Do not remove the cards while the device is transferring data. Doing so may cause data to be lost or damage to the cards and device.
- The SIM cards and TF card are small parts. Please keep away from Children to avoid swallowing the card by accident.
- Please do not touch the metal surface of SIM and TF cards and keep them away from electromagnetic field to avoid damaged data.

● **Charge the Battery**

Charge the battery before using it.

4. Getting started

● **Basic Function**

• Turn on the phone

Press and hold the power key for a while to turn on the phone.

• Turn off the phone

Long press the power key until a menu shows. Choose “Power off” to turn off the phone.

• Restart the phone

Option 1: Long press the power key until a menu shows. Choose “Reboot” to restart the phone.

Option 2: Long press the power key till 13 seconds to auto restart the phone automatically.

• Lock the screen

Option 1: Press the power key to turn off the screen and lock it.

Option 2: The screen will auto lock if you don't use the phone for a while.

-
- Unlock the screen
Press the power key for unlocking.

5. Warnings and notes

Operational Warnings

Important information on safe and efficient operation. Read this information before using your phone. For the safe and efficient operation of your phone, observe these guidelines:

Potentially explosive at atmospheres: Turn off your phone when you are in any areas with a potentially explosive atmosphere, such as fueling areas (gas or petrol stations, below deck on boats), storage facilities for fuel or chemicals, blasting areas and areas near electrical blasting caps, and areas where there are chemicals or particles (Such as metal powders, grains, and dust) in the air.

Interference to medical and personal Electronic Devices: Most but not all electronic equipment is shielded from RF signals and certain electronic equipment may not be shielded against the RF signals from your phone.

Audio Safety: This phone is capable of producing loud noises which may damage your hearing. When using the speaker phone feature, it is recommended that you place your phone at a safe distance from your ear.

Other Medical Devices, hospitals: If you use any other personal medical device, consult the manufacturer of your device to determine if it is adequately shielded from external RF energy. Your physician may be able to assist you in obtaining this information. Turn your phone OFF in health care facilities when any regulations posted in these areas instruct you to do so. Hospitals or health care facilities may be using equipment that could be sensitive to external RF energy.

Product statement on handling and use: You alone are responsible for how you use your phone and any consequences of its use.

You must always switch off your phone wherever the use of a phone is prohibited. Use of your phone is subject to safety measures designed to protect users and their environment. Always treat your phone and its accessories with care and keep it in a clean and dust-free place.

Do not expose your phone or its accessories to open flames or lit tobacco products.

Do not expose your phone or its accessories to liquid, moisture, or high humidity.

Do not drop, throw, or try to bend your phone or its accessories.

Do not use harsh chemicals, cleaning solvents, or aerosols to clean the device or its accessories.

Do not attempt to disassemble your phone or its accessories; only authorized personnel can do so.

Do not expose your phone or its accessories to extreme temperatures, minimum 32°F and maximum 104°F

Battery: Your phone includes an internal lithium-ion or lithium-ion polymer battery. Please note that use of certain data applications can result in heavy battery use and may require frequent battery charging. Any disposal of the phone or battery must comply with laws and

regulations pertaining to lithium-ion or lithium-ion polymer batteries.

Faulty and damaged products: Do not attempt to disassemble the phone or its accessory. Only qualified personnel can service or repair the phone or its accessory. If your phone or its accessory has been submerged in water, Punctured, or subjected to a severe fall, do not use it until you have taken it to be checked at an authorized service center.

Safety information

Due to the used enclosure material, the product shall only be connected to a USB. Interface of version 2.0 or higher. The connection to so called power USB is prohibited. The adapter shall be installed near the equipment and shall be easily accessible. Do not use the mobile phone in the environment at too high or too low temperature, never expose the mobile phone under strong sunshine or too wet environment. The maximum operating ambient temperature of the equipment is 40°C.



Excessive sound pressure from earphones and headphones can cause hearing loss.

To prevent possible hearing damage, do not listen at high volume levels for long periods.



Waste Electrical and Electronic Equipment (WEEE)

This symbol means that according to local laws and regulations your product and/or its battery shall be disposed of separately from household waste. When this product reaches its end of life, take it to a collection point designated by local authorities. Proper recycling of your product will protect human health and the environment.

FCC warning

Any changes or modifications not expressly approved by the party responsible for compliance could void the user's authority to operate this equipment.

This device complies with Part 15 of the FCC Rules. Operation is subject to the following two conditions:

- (1) This device may not cause harmful interference, and
- (2) this device must accept any interference received, including interference that may cause undesired operation.

This Product meets the government's requirements for exposure to radio waves. The guidelines are based on standards that were developed by independent scientific organizations through periodic and thorough evaluation of scientific studies. The standards include a substantial safety margin designed to assure the safety of all persons regardless of age or health.

FCC RF Exposure Information and Statement the SAR limit of USA (FCC) is 1.6 W/kg averaged over one gram of this Device **Bison2021 (2ANMU-BISON2021)** has been tested against this SAR limit. SAR information on this can be viewed on-line at <http://www.fcc.gov/oet/ea/fccid/>. Please use the device FCC ID number for search. This device was tested for typical operations 10mm from the body. To maintain compliance with FCC RF exposure requirements, 10mm separation distance should be maintained to the user's bodies

NOTE:

This equipment has been tested and found to comply with the limits for a Class B digital device, pursuant to Part 15 of the FCC Rules. These limits are designed to provide reasonable protection against harmful interference in a residential installation. This equipment generates, uses and can radiate radiofrequency energy and, if not installed and used in accordance with the instructions, may cause harmful interference to radio communications.

However,

there is no guarantee that interference will not occur in a particular installation.

If this equipment does cause harmful interference to radio or television reception, which can be determined by turning the equipment off and on, the user is encouraged to try to correct the interference by one or more of the following measures:

- Reorient or relocate the receiving antenna.
- Increase the separation between the equipment and receiver.
- Connect the equipment into an outlet on a circuit different from that to which the receiver is connected.
- Consult the dealer or an experienced radio/TV technician for help.

Accessory nformation

Charger: 5V/2A

Battery: 8000mAh

All software versions released by the manufacturer have been verified and are still compliant with the related rules.

