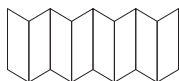


Package Design

DoorCam™ 2 - QSG



- Cut
- - - Inward-Fold
- - - Outward-Fold

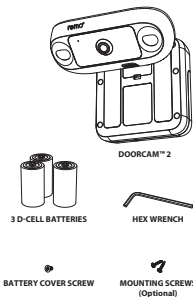
Material: Snow White 150g
 Color: CMYK / Printing on both sides
 Size: 720x150mm
 Finish: Folding

remo+
DoorCam™ 2

Quick Start Guide



WHAT'S IN THE BOX



2

MEET DOORCAM™ 2

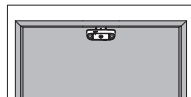
- 1 PIR Sensor
 - 2 IR LED
 - 3 Mic
 - 4 Camera Lens
 - 5 ALS Sensor
 - 6 Speaker
 - 7 Adhesive Pad*
 - 8 Battery Cover Screw**
-
- 9 Camera's Bracket Adjustment Screw
 - 10 Mounting Holes***
 - 11 Body's Bracket Adjustment Screws
 - 12 Status Button
 - 13 Wi-Fi Antenna
 - 14 Battery Cover

3

*Remove the protective film before use
 **Optional for secure the Battery Cover
 ***Optional for mounting

INSTALLATION CAUTION

If you have not installation problem, we recommend installing DoorCam™ 2 in the center of the door as shown below.



Remove the protective film from the Adhesive Pad on the back of DoorCam™ 2 body.

4

DOORCAM™ 2 INSTALL

DoorCam™ 2 can use battery power or USB power.
 If using batteries, follow **Option A**.
 If connecting to a power outlet, follow **Option B**.
 (Note: USB Power Adapter sold separately)

Option A

- Remove the Battery Cover.
- Install the batteries in accordance with the engraved then close the Battery Cover.
- Close the Battery Cover. **Options:** You can further secure the Battery Cover by using the Battery Cover Screw.

5

Option B

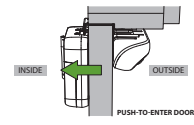
- Hang DoorCam™ 2 over the door and adjust the Bracket to fit the door's thickness. See **ADJUST DOORCAM™ 2** (PAGE 7).
- Remove the Battery cover and connect DoorCam™ 2 to a power outlet using the USB Power Adapter (sold separately). Then close the Battery cover. You can attach the power cable to the wall or door using the cable clips.

6

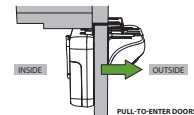
ADJUST DOORCAM™ 2

DoorCam™ 2 supports both push-to-enter and pull-to-enter doors.

If your door pushes-to-enter, follow **Option A**.



If your door pulls-to-enter, follow **Option B**.



7

Option A

- Use the Hex Wrench to loosen the Body's Bracket Adjustment Screws.
- Push the body inward until the inside of the body touches the door.
- Use the Hex Wrench to tighten the Body's Bracket Adjustment Screws.

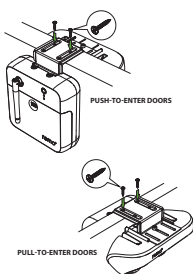
8

Option B

- Use the Hex Wrench to loosen the Camera's Bracket Adjustment Screw.
- Push the camera inward until the back of the camera touches the door.
- Use the Hex Wrench to tighten the Camera's Bracket Adjustment Screw.

9

WARNING: This product may fall off if placed too close to the edge of the door without being mounted. We recommend placing DoorCam™ 2 at the center of the door. You can further secure the device by using the included Mounting Screws.



PULL-TO-ENTER DOORS

10

DOORCAM™ 2 SETUP

CREATE AN ACCOUNT

- Make sure your mobile device is connected to your home's 2.4GHz Wi-Fi (5GHz not supported).
- Download and launch the Remo+ app.
- Press "Sign Up" at the bottom of the login page.
- Enter your email and create a password. Then press "Sign Up". For Help, press the at the top right corner. Once you have signed up, you are ready to register your device.

11

REGISTER DOORCAM™ 2

- Have your Wi-Fi network password available.
- DoorCam™ 2's status LED light should flash up and down. If it does not, press the status button on the back of the device.
- After logging into the Remo+ app, press "s" on the home screen to add your device, and select your time zone.
- Switch to your phone's Wi-Fi settings, leaving the Remo+ app open. Please **DO NOT CLOSE THE APP**.
- Connect to the network **DoorCam2_XXXXX**. If you see "Internet is unavailable," tap "Okay."
- Once you're connected to the **DoorCam2_XXXXX** network, switch back to the Remo+ app and press "Continue".
- Select your home Wi-Fi network, enter the password, then press "DONE." Your app will then complete the registration. This may take up to 3 minutes.

12

FAQ

Forgot your password?

- Press "Forgot Password" on the login page.
- Enter your account email and click SEND.
- Check your email (including spam folder) for the temporary password.
- Open the Remo+ app and log in using your account email and the temporary password.
- Create a new password.

How many users can access the DoorCam™ 2?

You can view DoorCam™ 2 from up to 5 iOS/Android devices:
 1. Open the Remo+ app from your choice of device.
 2. Log in using the same account email and password.
 3. Enter a different profile name (this will show in the Viewers list).
 Menu > Viewers > Click on Viewer XXXX > Type in your preferred viewer name

How do I store my videos?

All DoorCam 2 videos are stored and saved on our free 3-day rolling Cloud plan. All accepted and missed activities can be viewed in your activity log for up to 3 days. Video recordings are protected with bank-level security and can only be accessed by registered users, not the Remo+ team.

If you want to view your videos for a longer time, you can purchase additional Cloud storage for \$3/month or \$30/year.

13

TROUBLESHOOTING

Can't see the videos on your Recent Activity?

For Android users, allow all permissions to the RemoPlus app:
 Settings > Applications Manager > Permissions > Storage

Check your Settings in the RemoPlus app:

Menu > Devices > Your Devices > Turn on Motion Sensor > Turn on Save Videos to Cloud > Press the DoorCam™ 2 status button to save the settings

Can't find your home Wi-Fi during the setup process?

If you cannot get past step 6 on "REGISTER DOORCAM™ 2" on the QSG, make sure you connect to your home Wi-Fi and retry the setup process by logging into your account and pressing "Add Device".

How to reset your DoorCam™ 2

- Open the battery cover and press the Reset button for 5 seconds.
- Wait until the status LED light flashes up and down, then go back to the app and delete your registered device.
- Then go back to page 12, step 3 to re-register your DoorCam™ 2.

14

SUPPORT

We're happy to help!
 support@remoplus.com
 (888) 955-3449
 Mon-Fri 9am to 5pm PT (except holidays)

LIMITED WARRANTY

1. LICENSOR DOES NOT WARRANT THAT THE FUNCTIONS CONTAINED IN THE LICENSED PRODUCT AND HARDWARE WILL MEET LICENSEE'S REQUIREMENTS OR THAT THE OPERATION OF THE SOFTWARE AND HARDWARE WILL BE UNINTERRUPTED OR ERROR-FREE. LICENSOR DOES WARRANT THAT THE MEDIA ON WHICH THE SOFTWARE IS FURNISHED AND THE HARDWARE WILL BE FREE FROM DEFECTS IN MATERIAL AND WORKMANSHIP UNDER NORMAL USE FOR A PERIOD OF ONE YEAR FROM THE DATE OF DELIVERY (WARRANTY PERIOD). THE LIMITED WARRANTY IS VOID IF FAILURE OF THE MEDIA ON WHICH THE PRODUCT OR SOFTWARE IS FURNISHED HAS RESULTED FROM ACCIDENT, ABUSE, OR MISAPPLICATIONS.

2. EXCEPT AS PROVIDED ABOVE, THE LICENSED PRODUCT IS PROVIDED "AS IS" WITHOUT WARRANTY OF ANY KIND, EITHER EXPRESS OR IMPLIED INCLUDING, BUT NOT LIMITED TO, IMPLIED WARRANTIES OF MERCHANTABILITY AND FITNESS FOR A PARTICULAR PURPOSE. THE ENTIRE RISK AS TO THE QUALITY AND PERFORMANCE OF THE LICENSED PRODUCT AND HARDWARE IS WITH LICENSEE.

HOW TO DISPOSE YOUR BATTERIES

Alkaline batteries are not listed as a hazardous waste under the Resource Conservation and Recovery Act (RCRA).

Most states classify alkaline batteries according to RCRA regulations. However, some states have more rigorous regulations. The hazardous waste characterization requirements of Alaska, California, Minnesota, Rhode Island and Washington include battery. South Carolina regulates all types of batteries as special waste. Therefore, disposal of alkaline batteries in South Carolina must be accomplished accordingly.

Please call 1-877-2-RECYCLE for information on recycling your used alkaline battery or visit www.call2recycle.org.

15

FCC COMPLIANCE STATEMENT

This device complies with part 15 of the FCC rules. Operation is subject to the following two conditions: (1) This device may not cause harmful interference, and (2) this device must accept any interference received, including interference that may cause undesired operation.

FCC INTERFERENCE STATEMENT

This equipment has been tested and found to comply with the limits for a Class B digital device, pursuant to part 15 of the FCC rules. These limits are designed to provide reasonable protection against harmful interference in a residential installation. This equipment generates, uses and can radiate radio frequency energy and, if not installed and used in accordance with the instructions, may cause harmful interference to radio communications. However, there is no guarantee that interference will not occur in a particular installation. If this equipment does cause harmful interference to radio or television reception, which can be determined by turning the equipment off and on, the user is encouraged to correct the interference by one of the following measures:

- Reorient or relocate the receiving antenna.
- Increase the separation between the equipment and receiver.
- Connect the equipment into an outlet on a circuit different from which the receiver is connected.
- Consult the dealer or an experienced radio/television technician for help.

FCC CAUTION

Any changes or modifications not expressly approved by the party responsible for compliance could void the user's authority to operate this equipment. This transmitter must not be co-located or operating in conjunction with any other antenna or transmitter.

FCC RADIATION EXPOSURE STATEMENT

This equipment complies with FCC radiation exposure limits set forth for an uncontrolled environment. This equipment should be installed and operated with minimum distance 20 cm between the radiator and your body. This transmitter must not be co-located or operating in conjunction with any other antenna or transmitter.

FOLLOW US ON



16