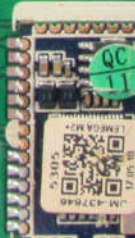


M2A  
Main Board  
Rev:1.0  
2017.4.17

XSL-1 E351429  
84V-0 9A

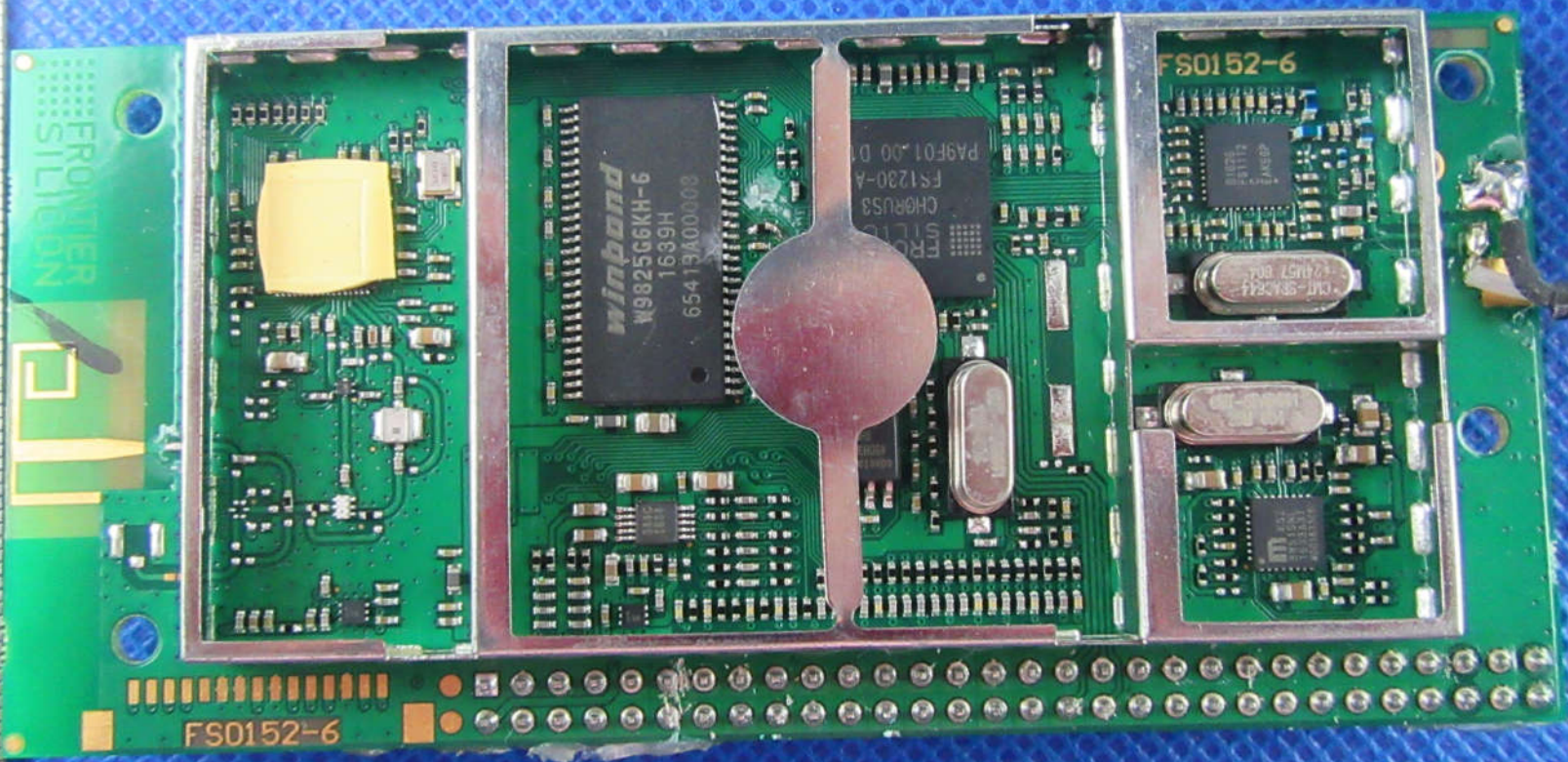


0.5mm

mm

1 2 3 4 5 6 7 8 9 10 1 2 3 4 5 6 7 8 9

3 4 5 6 7 8 9 10 1 2 3 4 5 6 7 8 9 20 1 2



FRONTIER  
SLIMLINE

FS0152-6

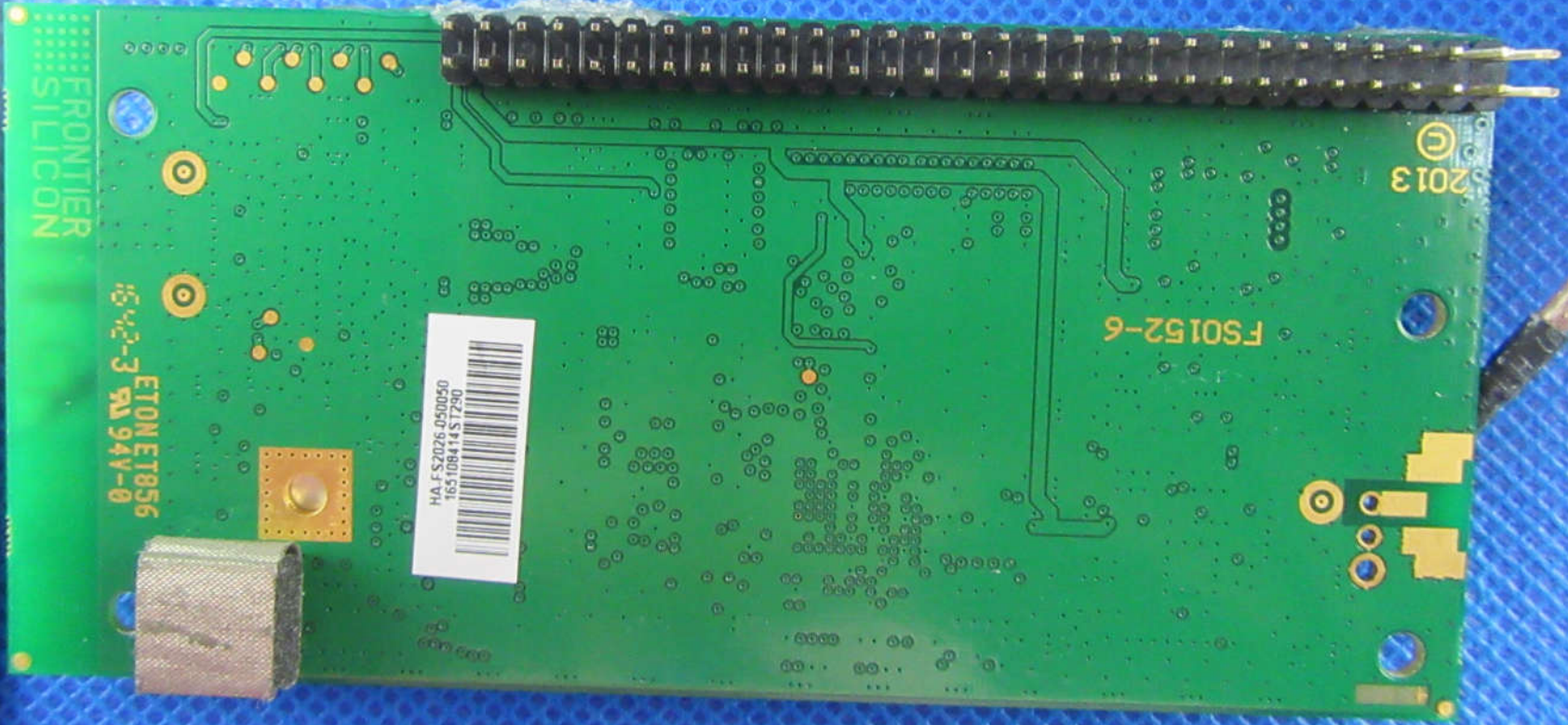
FS0152-6

winbond  
W9825G6KH-6  
1639H  
65419A00008

PA9F01.00 D  
FS1230-A  
CH08RUS3

CLT-S8A2644  
-224157 D04

ELASOP  
E51113  
E51113



FRONTIER  
SILICON

ETONET856  
642-3 RA 94V-0

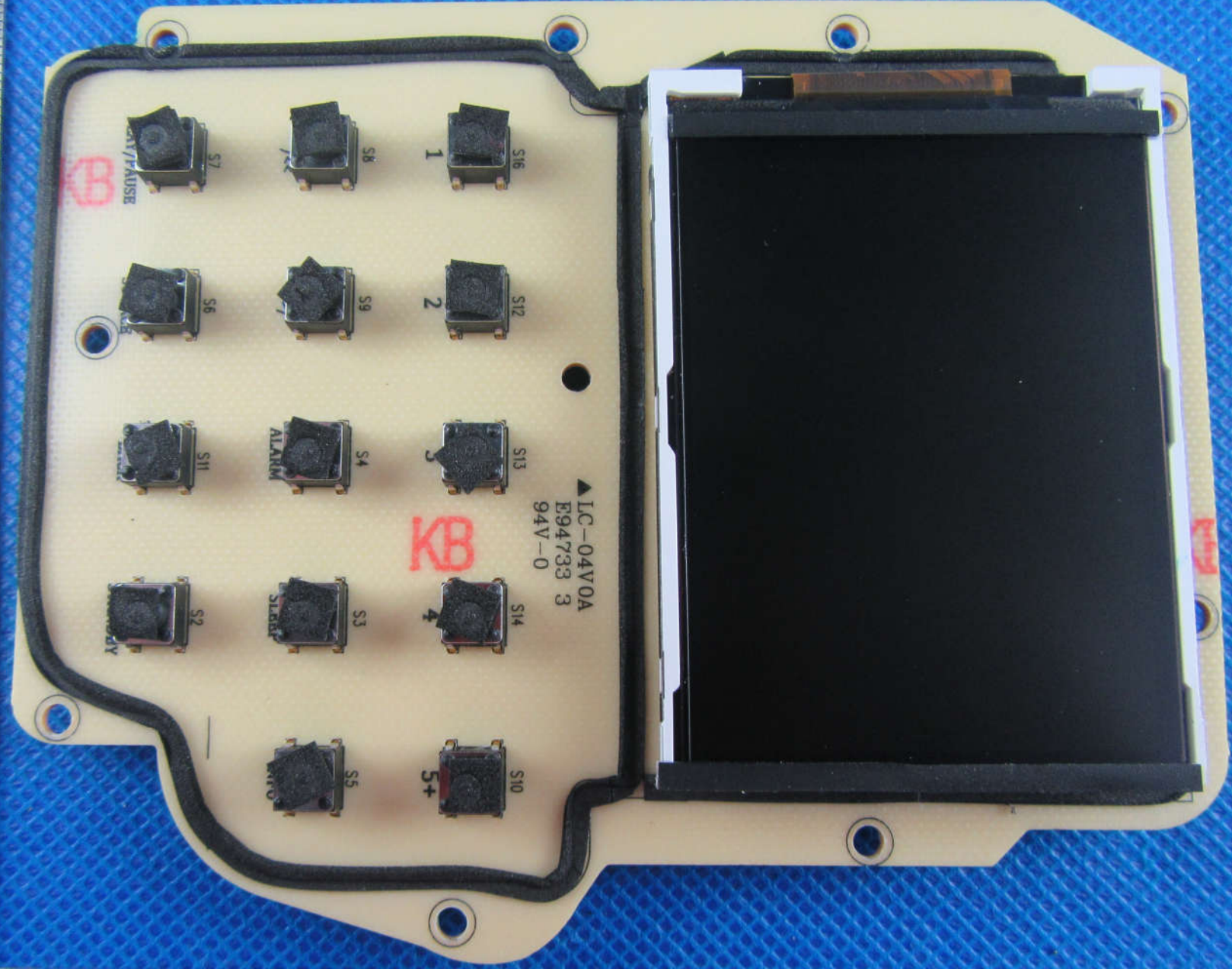
HA-FS2026-050050  
165108415T240

FS0152-6

© 2013

1 2 3 4 5 6 7 8 9 10 1 2 3

0.5mm mm 1 2 3 4 5 6 7 8 9 10 1 2 3



KB

CALL/AUSE  
S7

S8

1  
S16

S6

S9

2  
S12

S11

ALARM  
S4

S13

KB

▲ LC-04V0A  
E94733 3  
94V-0

S2

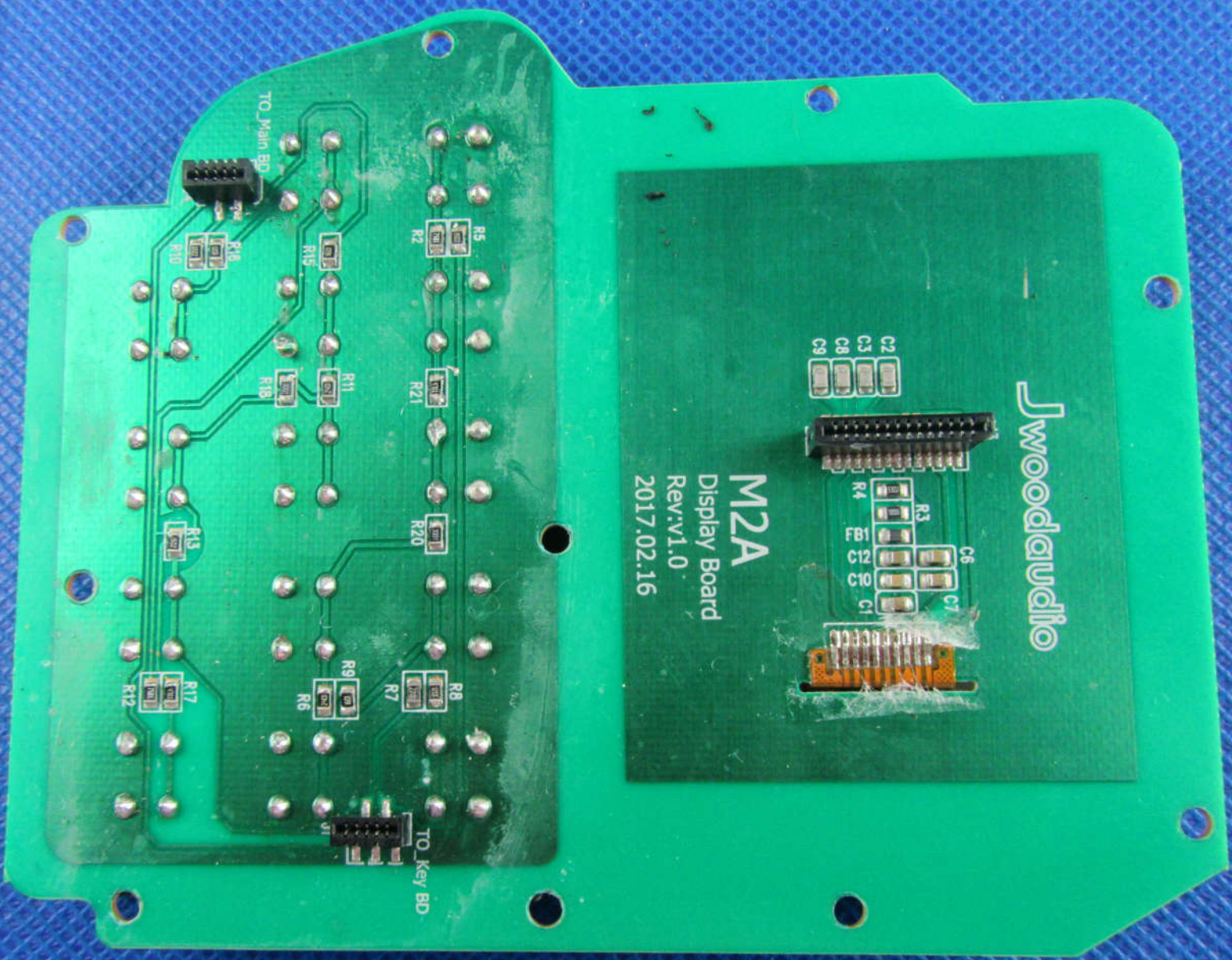
SLEEP  
S3

4  
S14

S5

5+  
S10

KB



Jwoodaudio

M2A  
Display Board  
Rev.v1.0  
2017.02.16

C2  
C3  
C8  
C9

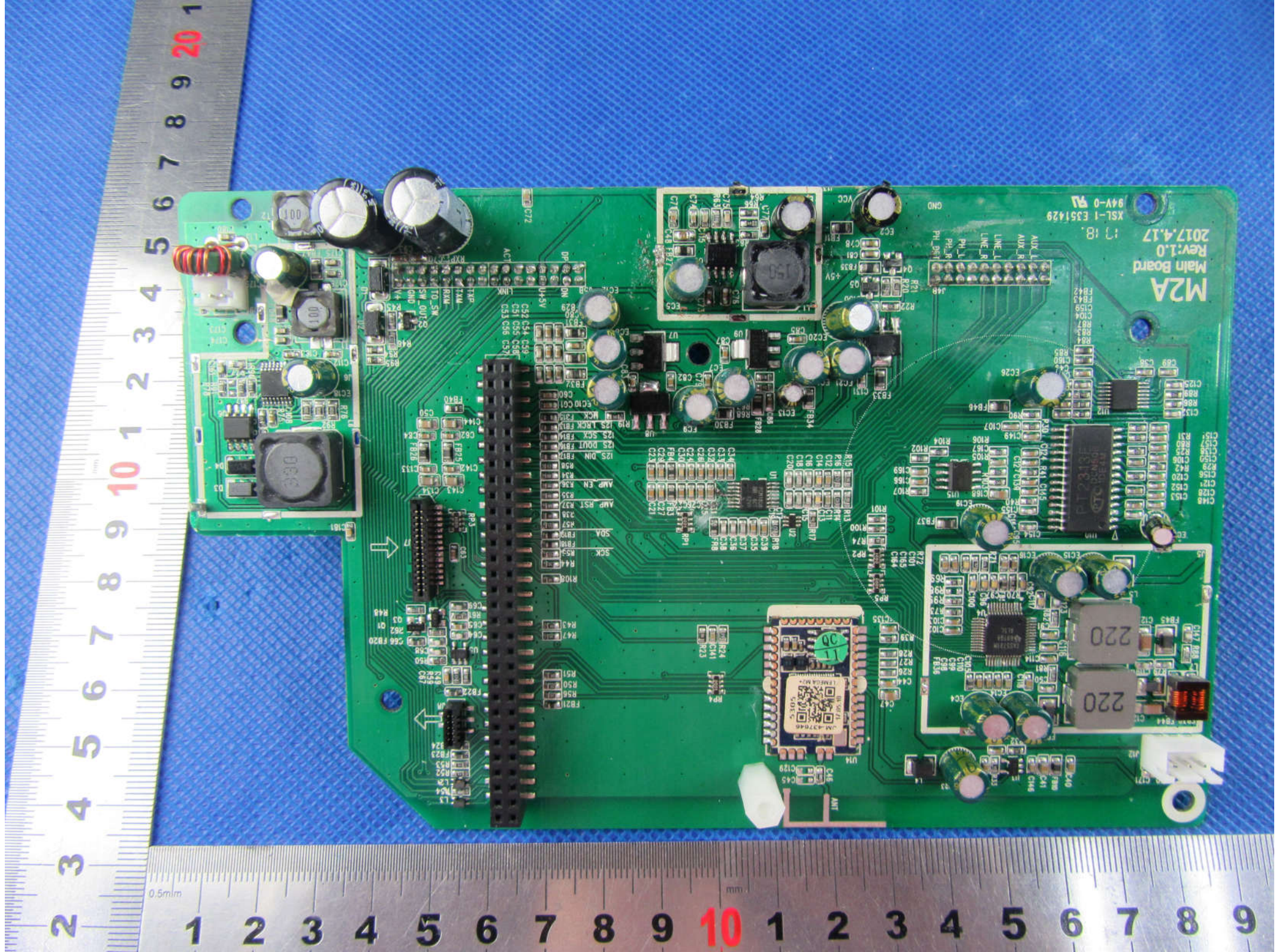
R3  
R4  
FB1  
C12  
C10  
C1

TO Main BD

TO Key BD

R1  
R2  
R3  
R4  
R5  
R6  
R7  
R8  
R9  
R10  
R11  
R12  
R13  
R14  
R15  
R16  
R17  
R18  
R19  
R20





M2A  
Main Board  
Rev:1.0  
2017.4.17

XSL-1-E3S1429  
94V-0 9A

1:18

220  
220

30  
UM-3706  
TEMPORA M-2  
50T

G59 C54, C59  
C51 C55 C56  
C51 C56 C57

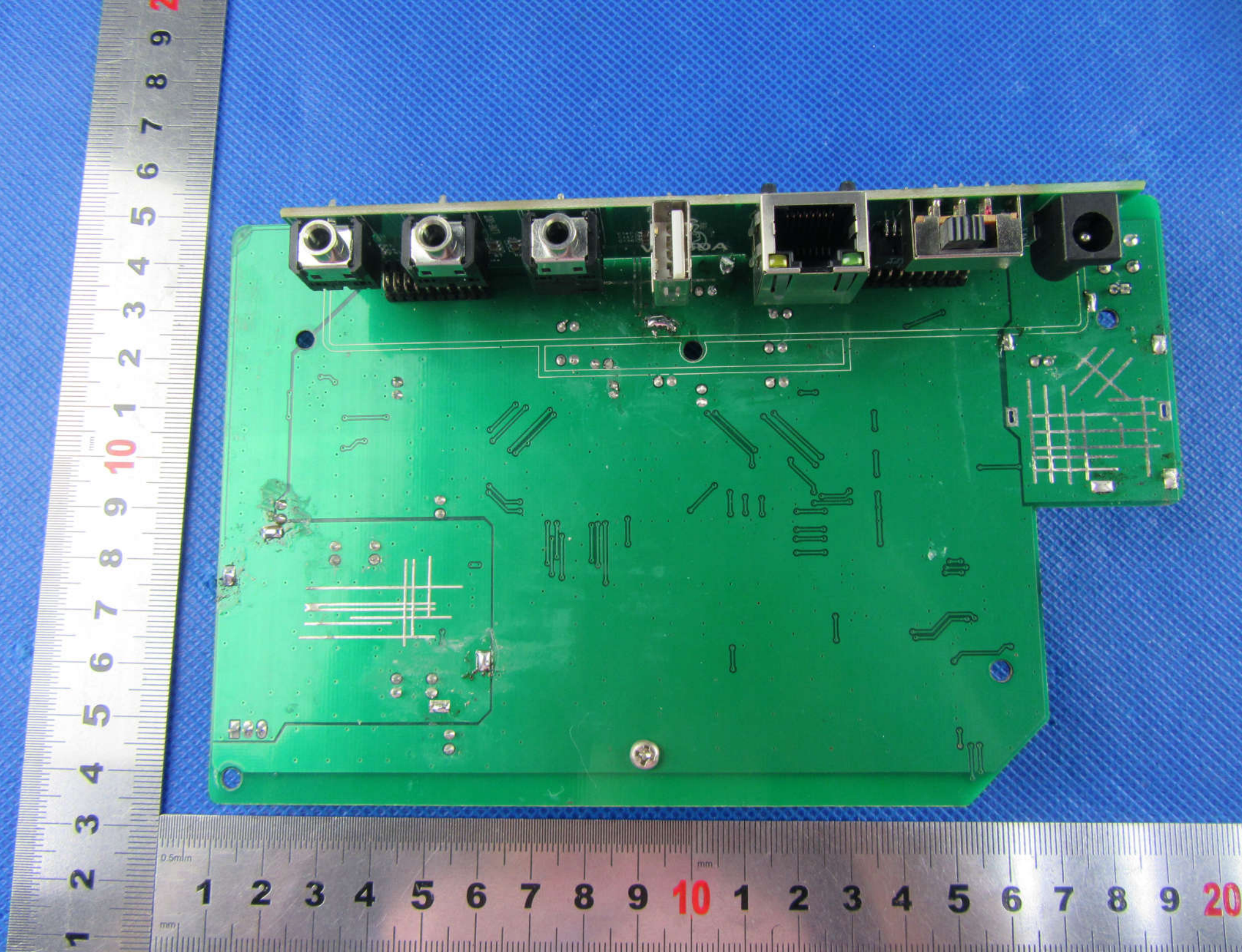
AMP EN R38  
AMP RST R37  
SCK R44  
SQA R87  
R19 I2S LCK R18  
I2S SCV R17  
I2S DOUT R16  
I2S DIN R15

R24  
R23  
R22  
R21  
R20  
R19  
R18  
R17  
R16  
R15  
R14  
R13  
R12  
R11  
R10  
R9  
R8  
R7  
R6  
R5  
R4  
R3  
R2  
R1

C14  
C13  
C12  
C11  
C10  
C9  
C8  
C7  
C6  
C5  
C4  
C3  
C2  
C1

U4  
U3  
U2  
U1  
U7  
U6  
U5  
U4  
U3  
U2  
U1

F1  
F2  
F3  
F4  
F5  
F6  
F7  
F8  
F9  
F10  
F11  
F12  
F13  
F14  
F15  
F16  
F17  
F18  
F19  
F20  
F21  
F22  
F23  
F24  
F25  
F26  
F27  
F28  
F29  
F30  
F31  
F32  
F33  
F34  
F35  
F36  
F37  
F38  
F39  
F40  
F41  
F42  
F43  
F44  
F45  
F46  
F47  
F48  
F49  
F50  
F51  
F52  
F53  
F54  
F55  
F56  
F57  
F58  
F59  
F60  
F61  
F62  
F63  
F64  
F65  
F66  
F67  
F68  
F69  
F70  
F71  
F72  
F73  
F74  
F75  
F76  
F77  
F78  
F79  
F80  
F81  
F82  
F83  
F84  
F85  
F86  
F87  
F88  
F89  
F90  
F91  
F92  
F93  
F94  
F95  
F96  
F97  
F98  
F99  
F100



1 2 3 4 5 6 7 8 9 10 11 12 13 14 15 16 17 18 19 20

1 2 3 4 5 6 7 8 9 10 11 12 13 14 15 16 17 18 19 20





H B  
JWOOD Audio  
4D SW  
170506

