



# USER MANUAL

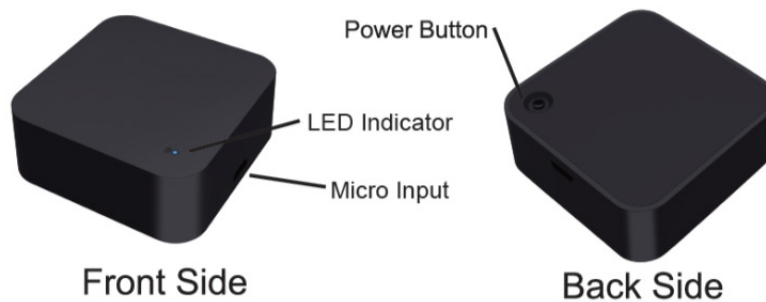
Model: S06



Thanks for choosing our product!

Say goodbye to use one remote for each of IR home appliances such as TV, Air conditioner, Set-Top Box, etc. Please kindly read the user manual before usage and keep it for future reference.

## Product Presentation:



Remark: please place it like the front side when use

## Specification:

- 1) Input : DC 5V/1A
- 2) IR Frequency: 38KHz
- 3) WiFi Frequency: 2.4GHz
- 4) Infrared Range:  $\leq 8$  meters
- 5) Working temperature:  $0^{\circ}\text{C} - 50^{\circ}\text{C}$
- 6) Working humidity:  $\leq 85\% \text{RH}$
- 7) Size: 50\*50\*19mm
- 8) Material: ABS
- 9) Weight: 28 g
- 10) LED indicator: Blue
- 11) Supports Android 4.4 or newer and iOS 8.0 or newer

## How to Set up

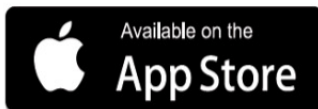
1. Use your phone to scan QR code or search “Smart Life” app in Google Play store or APP Store to download and install it.



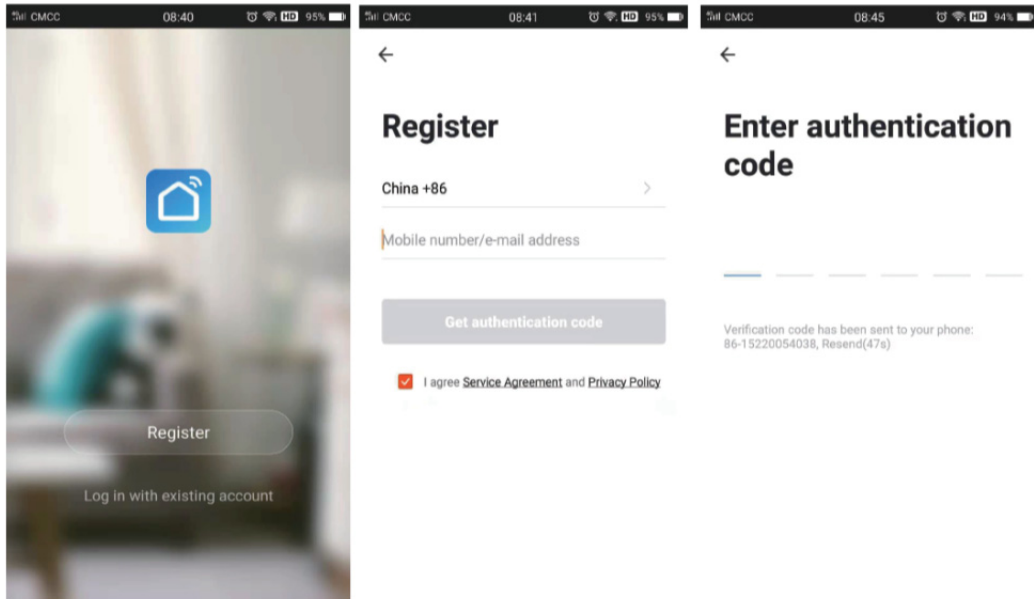
Scan QR Code to download



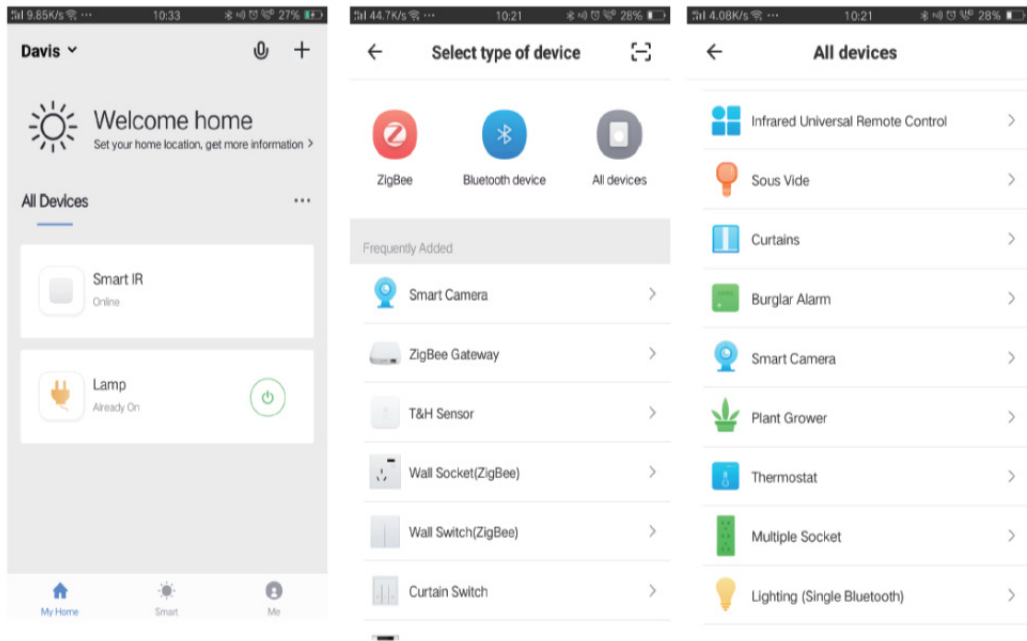
Smart Life



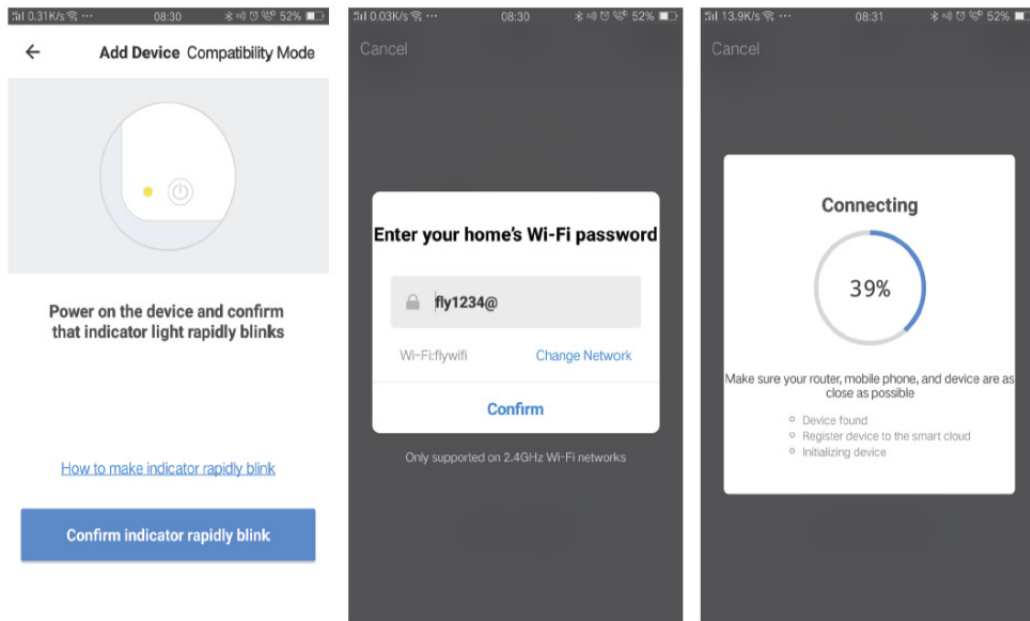
## 2. Create an account with your mobile number and verification code.



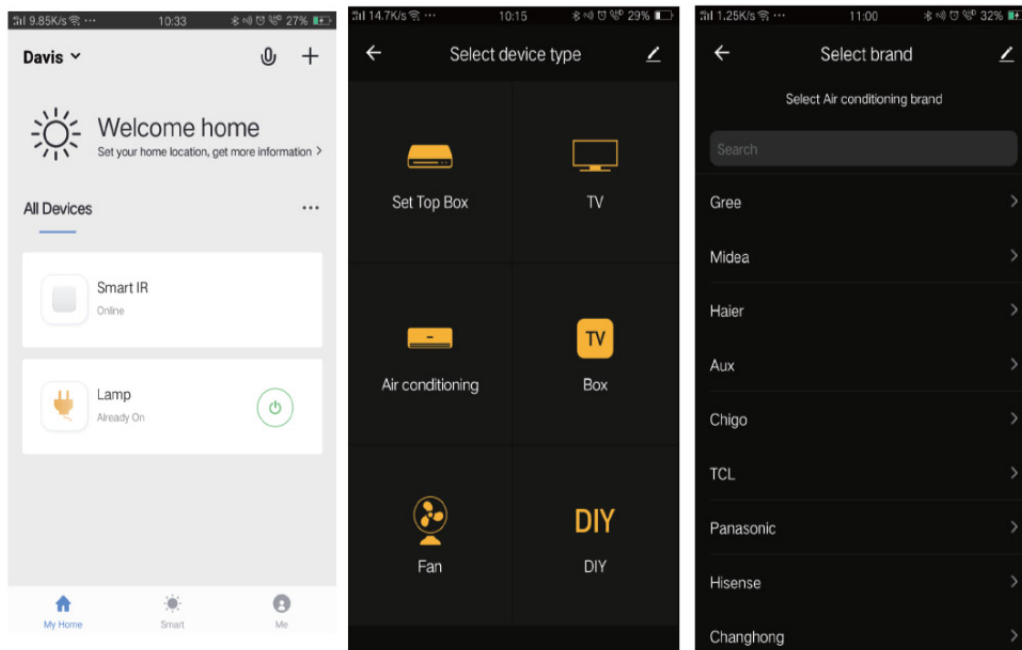
3. Connect your mobile to your WiFi router at your home, click “+” in the upper right corner of the homepage and select “Infrared Universal Remote Control” from the “All device” type.



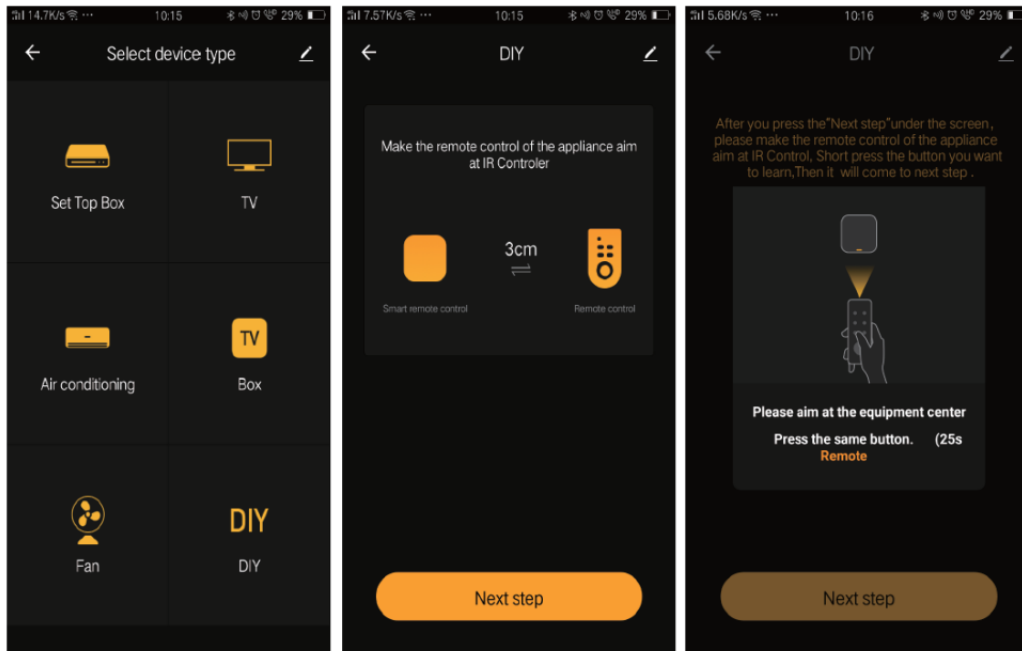
4. Power on remote control, long press power button for about 5 seconds till the blue indicator flashes rapidly. enter wifi password and click“Confirm”,it is connecting to your wifi.



5. Once connection completed, just click“Done” and edit its name, then click it to add TV, TV box, Fan, Air conditioner with different brands. After addition done, you can click the “Pen” icon to edit device name with your name to avoid conflict with others’ devices when use. (e.g. Jack’s TV)



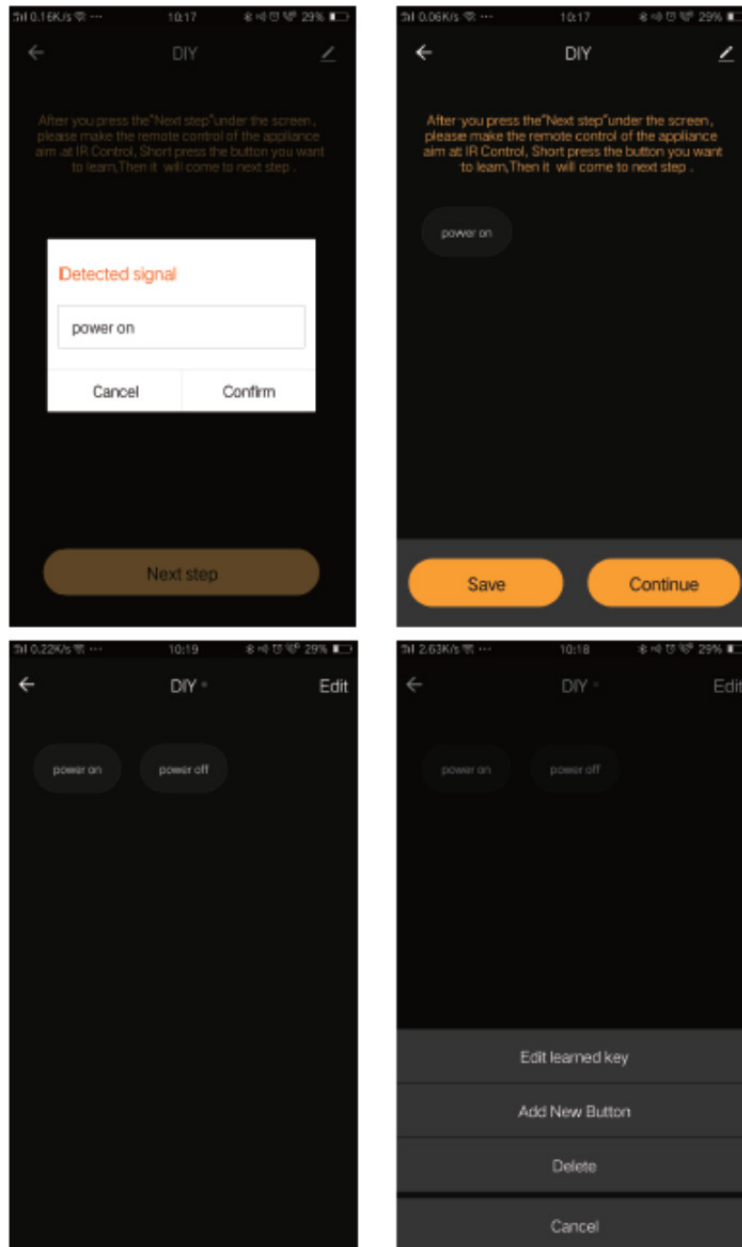
6. When you can not find the brand of added device in the list, you can click “DIY” to copy function keys of other brand’s remote control to control it.



#### NOTES:

- a. We don't recommend "DIY" for Air conditioner.
- b. "DIY" does not support voice control.



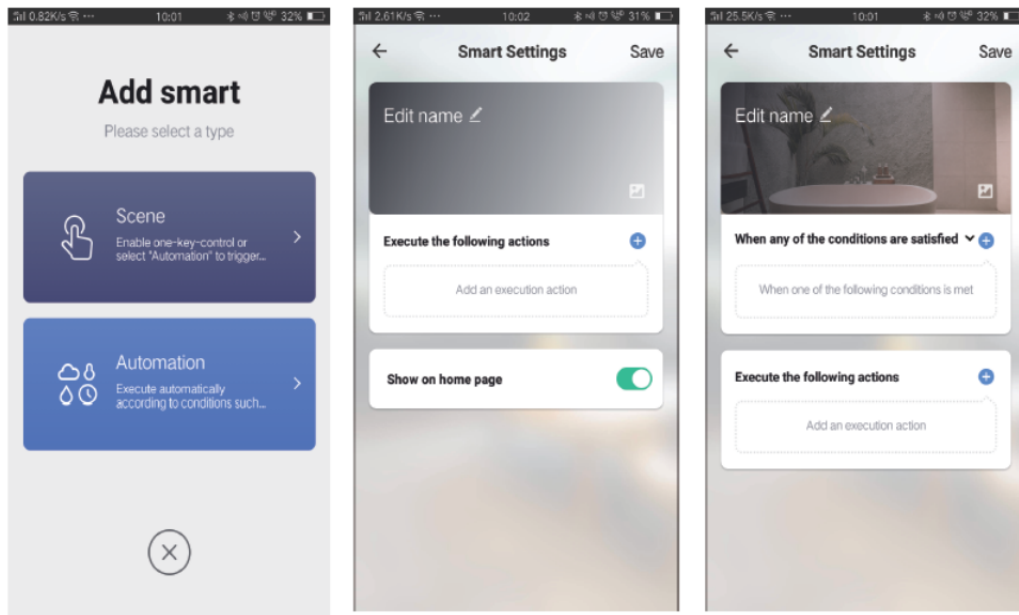


7. If you want to edit or add other buttons, just click "Edit" at the right upper corner.

# Main Functions

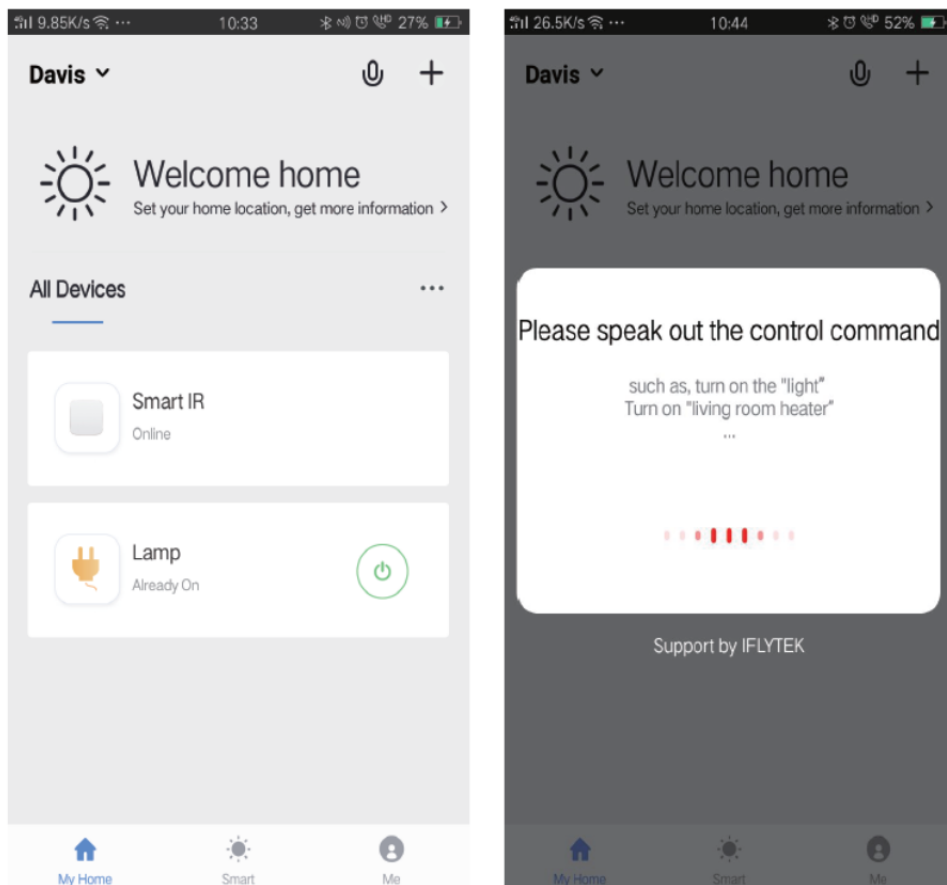
## 1. Customize Scenes

Create personal scenes for specific IR devices, click “Add Smart” button, select type ,then click“+” to add conditions and action.



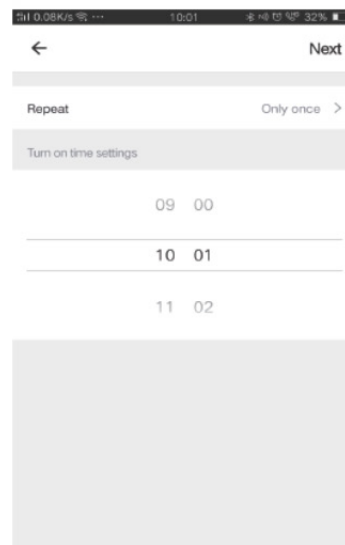
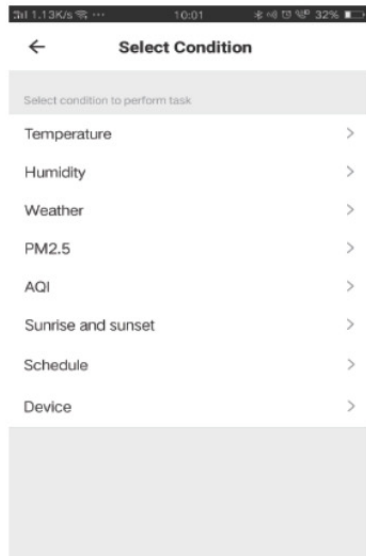
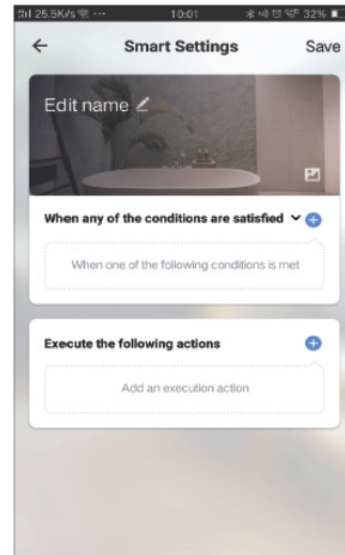
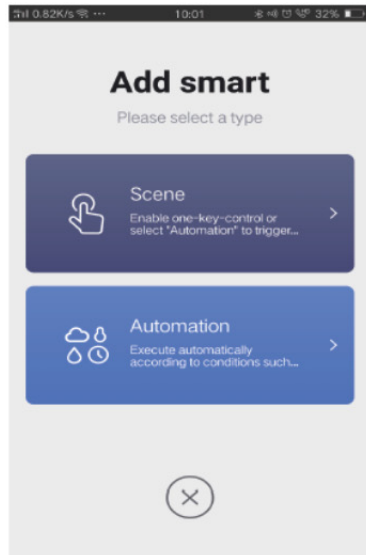
## 2. Remote Control & Voice Control

With all-in-one integration, you can control couples of IR devices remotely wherever you are at anytime through touch of the button or Click the“Microphone” icon at the upper right corner to send voice command to your specific devices,please read the full device name to make sure identification with your accurate command.



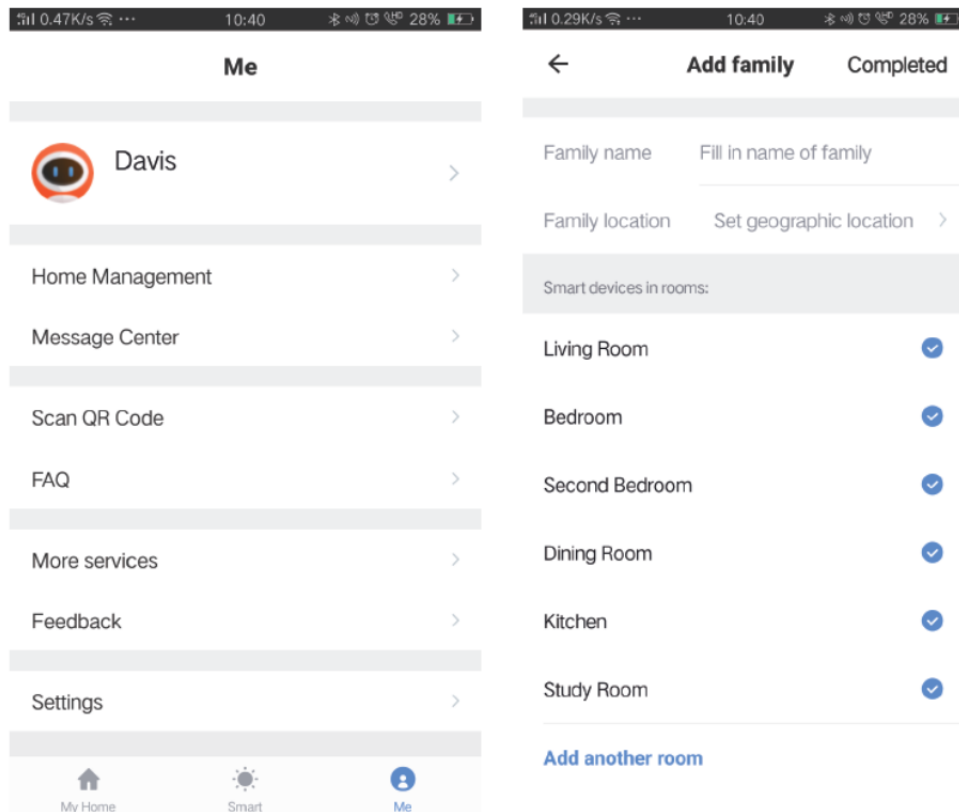
### 3. Set Schedules

Select “Automation” type in “Add Smart” page, click “+” to select “Schedule” condition to set power on/off time for specific devices.



## 4. Device Sharing

Select “Home Management” in the “Me” page to share your connected devices with family members and friends, so you all can control the same devices remotely and have a fun.



## 5. Compatibilty

Works with amazon alexa, Google Assistant .

## FAQ

### **1. What devices can control with wifi remote control?**

You can control TV, Fan, Air conditioner and other IR enabled appliances.

### **2. What should I do when I cannot control the devices with this remote control?**

Firstly, make sure your mobile device and the wifi remote control are adjacent and connected to the same network, Assure the wifi infrared remote control is always power on.

### **3. Can I control devices through 2G/3G/4G network?**

The wifi remote control and mobile device are required to share the same wifi network when adding wifi remote control the first time. After device configuration succeed, you can remotely control devices through 2G/3G/4G cellular network.

### **4. What should I do when device configuration process has failed?**

you can:

- Check whether the remote control is powered on or not.
- Check whether your mobile device is connected to 2.4GHz wifi network.
- Check your network connectivity, make sure the router is working properly.
- Make sure the wifi password entered is correct when adding remote control.

**FCC Warning:**

This equipment has been tested and found to comply with the limits for a Class B digital device, pursuant to part 15 of the FCC Rules. These limits are designed to provide reasonable protection against harmful interference in a residential installation. This equipment generates, uses and can radiate radio frequency energy and, if not installed and used in accordance with the instructions, may cause harmful interference to radio communications.

However, there is no guarantee that interference will not occur in a particular installation. If this equipment does cause harmful interference to radio or television reception, which can be determined by turning the equipment off and on, the user is encouraged to try to correct the interference by one or more of the following measures:

- Reorient or relocate the receiving antenna.
- Increase the separation between the equipment and receiver.
- Connect the equipment into an outlet on a circuit different from that to which the receiver is connected.
- Consult the dealer or an experienced radio/TV technician for help.

Caution: Any changes or modifications to this device not explicitly approved by manufacturer could void your authority to operate this equipment.

This device complies with part 15 of the FCC Rules. Operation is subject to the following two conditions: (1) This device may not cause harmful interference, and (2) this device must accept any interference received, including interference that may cause undesired operation.

**FCC**

To comply with FCC RF exposure compliance requirements, this grant is applicable to only mobile configurations. The antennas used for this transmitter must be installed to provide a separation distance of at least 20 cm from all persons and must not be co-located or operating in conjunction with any other antenna or transmitter.