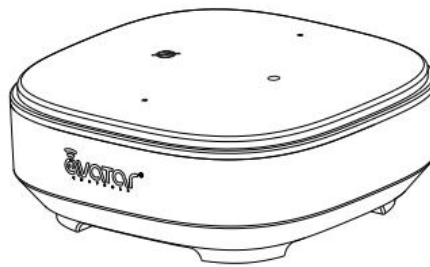


AvaCube – Smart Home Hub with Alexa Built-in

(User Manual)



Product Introduction:

AvaCube is the Alexa-enabled voice control & AI speaker that is integrated with IR hub. AvaCube has an independent voice feature, which enables direct dialogue and control between people and devices, and is also compatible with Alexa smart devices.

AvaCube can be woke up via Amazon Alexa voice control, and also streamline your morning and bedtime routines. Through powerful built-in Alexa function, you can use voice commands to get a weather report, listen to news, set up alarm, control your smart devices and etc.

The AvaCube is an IR (Infrared) hub to easily control your home IR appliances like fans, air conditioners, TVs, and set top boxes. It comes with a massive IR library of mainstream household devices and a comprehensive 360° signal coverage. In addition, it also includes a DIY learning mode that can connect to any new devices.



Smart Home



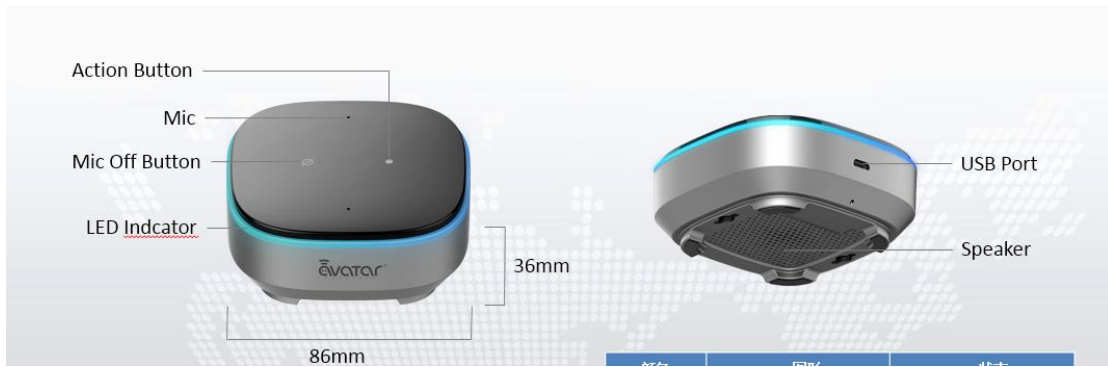
Event Planner



Audio Content



Recreation and Entertainment



Packing List:

- 1 x AvaCube Hub
- 1 x USB Charging Cord
- 1 x User Manual
- 1 x Warranty Card

Operating Instructions

Button	Short Press	Long Press (6 seconds)
	Mic Off Button	
	Action Button	Restore factory settings

When the AvaCube is plugged in for the first time, the button temporarily has no function since it is waiting to connect to the network.

LED indicator

Color	Display	Status
Orange	Ring breathing light	Configuring Network
Blue	Ring light	Awake State
Red	Ring light	Mic Off /Network failure

Initial Setup :

1. Plug in your AvaCube

Plug in the included USB charging cord into the AvaCube and plug the adapter into a power outlet. An orange light will slowly flash (detection state) as it connects to the Wifi network.



2. Install the APP

Scan the following QR code on your phone, or go to the Google Play store or the Apple store to download and install the AvatarControls APP.



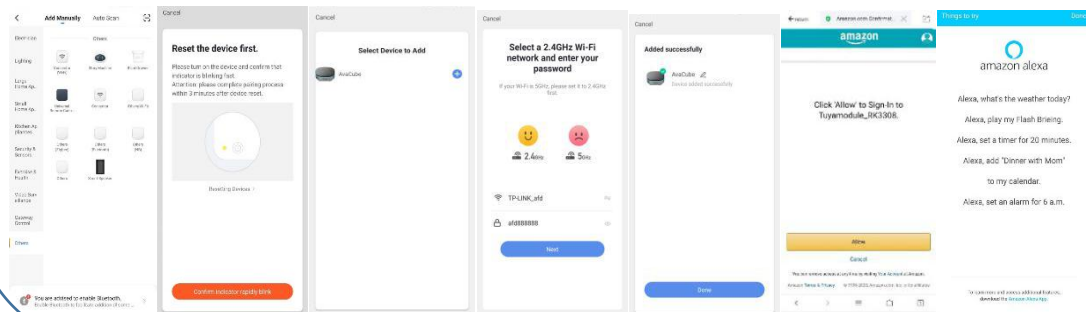
3. Login to your account

Open AvatarControls APP, follow the guide to log in/register APP account.



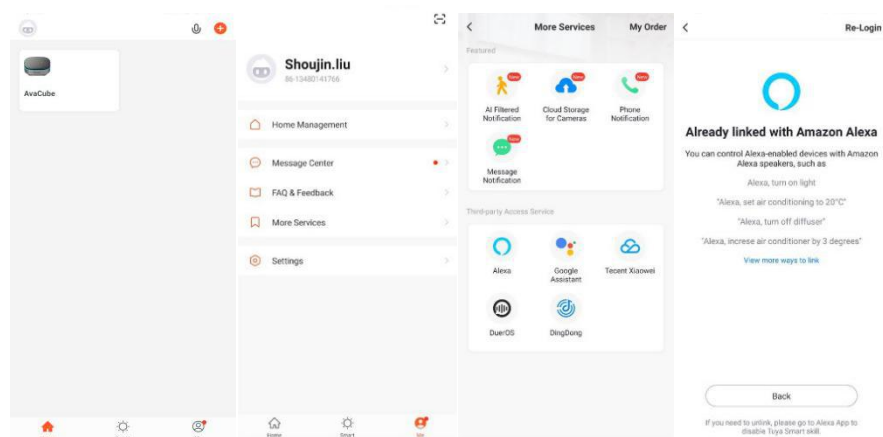
4. Connecting to the internet and your Amazon account

Add device in the APP, select the category "Other", select add "Smart Speaker". Bluetooth will search the device automatically. Enter your WiFi password to configure the network as prompted. After the network configuration is complete, click "Done" and sign in Amazon account for platform authorization. Click "Allow" after authentication is completed. Open Avatarcontrols APP to confirm success, you will hear a "dong" voice prompt, the indicator light goes out, indicating that the network has been successfully configured. Click on the upper right corner "Done" to finish. The device will play "now your device connected to the internet."



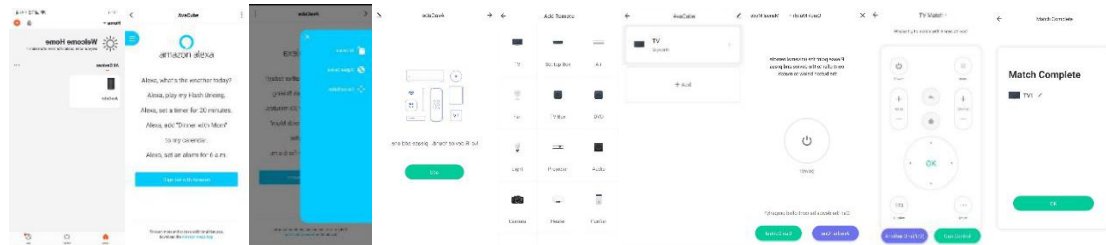
5. Connecting to Alexa

Return to the home of the APP, select the "Me" option in the bottom right corner. Select "More Service", then under the Third-party Access Service select "Alexa". Sign in to your Amazon account to connect to Alexa. The APP will show "Already linked with Amazon Alexa" after successful connection to Alexa.



6. Add an Infrared device

Select "AvaCube". Select the blue icon in the upper left corner to expand, then select "IR Device", select "add" to add an IR device. Select device type from all supported IR device types. Choose your infrared device brand and follow the instructions to configure the remote control. Press "OK" after the remote control match is completed. Now you can control your device with the Avacube.



Tips

1. Device location services and Bluetooth on your phone need to be turned on during the network configuration.
2. Please use 2.4G WiFi to configure the device. 5G WiFi is not supported yet.
3. If the device is not in configuration mode, press and hold the microphone off button to reconfigure.
4. All controlled sub-device names can be customized.
5. Amazon account authorization and settings only need to be performed once

Smart interaction

1. Smart home control

AvaCube seamlessly integrates with Tuya IOT products. Over 90,000 products powered by tuya can be controlled including TVs, air conditioners, set-top boxes, fans, IPTV boxes, smart plugs, smart switches, smart lights, smart purifiers, and more.

Just say "Alexa", "Turn on TV", "Turn on socket", "Play music", etc.

2, Multi-scenario control

You can set up different scene modes on the APP, multi-scenario feature can control multiple scenes by one-click trigger.

For example:

You can say "Alexa, I'm back home" to AvaCube when you get home at night, and the AvaCube will execute a customized home mode.

You can say "Alexa, good morning" to AvaCube when you wake up in the morning, the AvaCube will execute a customized wake-up mode.

3,Event Planner

Alexa, set the alarm for 7 a.m.

Alexa, set the timer for 45 minutes.

Alexa, what's on my calendar tomorrow?

Alexa, when is my next meeting?

4,Audio Content

Alexa, play the book The Room Where It Happened.

Alexa, read my audiobook.

Alexa, play my Coldplay station from Pandora.

Alexa, play the program Radiolab.

5,Recreation and Entertainment

Alexa, can you tell me a "yo mama" joke?

Alexa, when do the Seattle Seahawks play next?

Alexa, what do you want to be when you grow up?

Alexa, will it rain tomorrow?

Alexa, what's your favorite color?

Specifications

Size: 86*86*35.5mm

Weight: 160g

Power adapter: 5V/1A

WiFi network: 802.11 b/g/n

Infrared emission distance: 8 meters (limited by environmental conditions)

Warranty Card Information:

Fill in the information

Product Name: _____

Product Model: _____

Product SN: _____

Purchase Date: _____

User Information:

User Name: _____

Contact Number: _____

Address: _____

The back of the warranty card

AvaCube – Smart Home Hub with Alexa Built-in

FCC WARNING

This device complies with part 15 of the FCC Rules. Operation is subject to the following two conditions: (1) this device may not cause harmful interference, and (2) this device must accept any interference received, including interference that may cause undesired operation.

Any changes or modifications not expressly approved by the party responsible for compliance could void the user's authority to operate the equipment.

NOTE: This equipment has been tested and found to comply with the limits for a Class B digital device, pursuant to Part 15 of the FCC Rules. These limits are designed to provide reasonable protection against harmful interference in a residential installation. This equipment generates, uses and can radiate radio frequency energy and, if not installed and used in accordance with the instructions, may cause harmful interference to radio communications.

However, there is no guarantee that interference will not occur in a particular installation.

If this equipment does cause harmful interference to radio or television reception, which can be determined by turning the equipment off and on, the user is encouraged to try to correct the interference by one or more of the following measures:

- Reorient or relocate the receiving antenna.
- Increase the separation between the equipment and receiver.
- Connect the equipment into an outlet on a circuit different from that to which the receiver is connected.
- Consult the dealer or an experienced radio/TV technician for help.

To maintain compliance with FCC's RF Exposure guidelines, This equipment should be installed and operated with minimum distance between 20cm the radiator your body: Use only the supplied antenna.