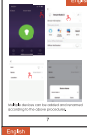




1. Important safety

- Read the manual before using the product.
- Do not touch the bulb when it is hot.
- Do not use the bulb in a confined space.
- Do not use the bulb in a wet area.
- Do not use the bulb in a high-temperature environment.
- Do not use the bulb in a high-voltage environment.
- Do not use the bulb in a high-pressure environment.
- Do not use the bulb in a high-vibration environment.
- Do not use the bulb in a high-impact environment.
- Do not use the bulb in a high-velocity environment.
- Do not use the bulb in a high-acceleration environment.
- Do not use the bulb in a high-frequency environment.
- Do not use the bulb in a high-temperature environment.
- Do not use the bulb in a high-pressure environment.
- Do not use the bulb in a high-vibration environment.
- Do not use the bulb in a high-impact environment.
- Do not use the bulb in a high-velocity environment.
- Do not use the bulb in a high-acceleration environment.
- Do not use the bulb in a high-frequency environment.



Control Your Smart Bulbs with Alexa/Google Assistant

With you, smart. Make sure that:

- You have a compatible smart bulb.
- You have a compatible smart speaker.
- You have a compatible smart display.
- You have a compatible smart TV.
- You have a compatible smart phone.
- You have a compatible smart tablet.
- You have a compatible smart watch.
- You have a compatible smart car.
- You have a compatible smart home.
- You have a compatible smart office.
- You have a compatible smart school.
- You have a compatible smart hospital.
- You have a compatible smart factory.
- You have a compatible smart city.
- You have a compatible smart country.
- You have a compatible smart world.



Warning:

This device complies with Part 15 of the FCC Rules. Operation is subject to the following two conditions: (1) this device may not cause harmful interference, and (2) this device must accept any interference received, including interference that may cause undesired operation.

changes or modifications not expressly approved by the party responsible for compliance could void the user's authority to operate the equipment.

NOTE: This equipment has been tested and found to comply with the limits for a Class B digital device, pursuant to Part 15 of the FCC Rules. These limits are designed to provide reasonable protection against harmful interference in a residential installation. This equipment generates, uses and can radiate radio frequency energy and, if not installed and used in accordance with the instructions, may cause harmful interference to radio communications. However, there is no guarantee that interference will not occur in a particular installation. If this equipment does cause harmful interference to radio or television reception, which can be determined by turning the equipment off and on, the user is encouraged to try to correct the interference by one or more of the following measures:

- Reorient or relocate the receiving antenna.
- Increase the separation between the equipment and receiver.
- Connect the equipment into an outlet on a circuit different from that to which the receiver is connected.
- Consult the dealer or an experienced radio/TV technician for help.

NOTE: This device and its antenna(s) must not be co-located or operation in conjunction with any other antenna or transmitter

RF Exposure Statement

To maintain compliance with FCC's RF Exposure guidelines, This equipment should be installed and operated with minimum distance of 20cm the radiator your body. This device and its antenna(s) must not be co-located or operation in conjunction with any other antenna or transmitter