

WLPP1-KSZPO1 V1.0 Front

75mm

WYZE Plug

QUICK START GUIDE

IN THE BOX

Wyze Plug x2 Quick Start Guide x1



STATUS LIGHT

- Off**
Socket power off
- Slow blue flashing light**
Connecting to WiFi
- Solid Blue**
Socket power on
- Fast blue flashing light**
In pairing mode

FCC Warning:

Any Changes or modifications not expressly approved by the party responsible for compliance could void the user's authority to operate the equipment. This device complies with part 15 of the FCC Rules. Operation is subject to the following two conditions: (1) This device may not cause harmful interference, and (2) this device must accept any interference received, including interference that may cause undesired operation.

FCC Radiation Exposure Statement:

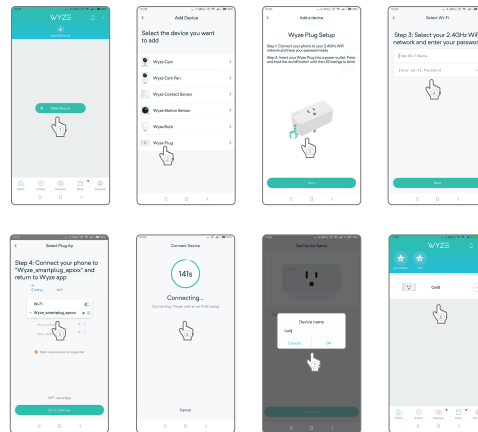
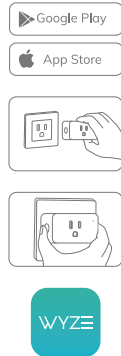
This equipment complies with FCC radiation exposure limits set forth for an uncontrolled environment. This equipment should be installed and operated with minimum distance 20cm between the radiator & your body. This transmitter must not be co-located or operating in conjunction with any other antenna or transmitter.

65mm

WLPP1-KSZPO1 V1.0 Back

SETUP

- 1 Download the Wyze app and create an account.
- 2 Insert Wyze Plug into an outlet.
- 3 The Wyze Plug's status light will flash blue showing it's in pairing mode. If it is not flashing blue, press and hold the on/off button until the light begins to flash blue.
- 4 Open the Wyze app and tap the 3 dots on the top right corner of the Home Page. Select "Add a Product" and then select Wyze Plug. Follow the instructions in the Wyze app to finish setup.



NEED HELP?

Resources & Support
support.wyze.com

Community
forums.wyze.com



Scan the QR code to learn more

Specification

Input: 110~125VAC / 60Hz

Current: 15A

Power: Max. 1875W

Overload: 5A Max. 660W Tungsten

Using Manual

Click press is for controlling the socket ON and OFF. When turn ON, the LED is lighting. And it will be closed when OFF;

Long press and hold 3 sec. is entering to the status of configuration network (effective in 10 minutes). At this point, it can be set according to the APP configuration.

ISED RSS warning

This device complies with ISED licence-exempt RSS standard (s). Operation is subject to the following two conditions: (1) this device may not cause interference, and (2) this device must accept any interference, including interference that may cause undesired operation of the device.

Le présent appareil est conforme aux CNR d'ISED applicables aux appareils radio exempts de licence.

L'exploitation est autorisée aux deux conditions suivantes:

(1) l'appareil ne doit pas produire de brouillage, et

(2) l'utilisateur de l'appareil doit accepter tout brouillage radioélectrique subi, même si le brouillage est susceptible d'en compromettre le fonctionnement.

ISED Radiation Exposure Statement:

This equipment complies with ISED RF radiation exposure limits set forth for an uncontrolled environment. This transmitter must not be co-located or operating in conjunction with any other antenna or transmitter.

This equipment should be installed and operated with minimum distance 20cm between the radiator & your body.

Cet appareil est

conforme aux limites d'exposition de rayonnement RF ISED établies pour un environnement non contrôlé.

Cet émetteur ne doit pas être co-implanté ou fonctionner en conjonction avec toute autre antenne ou transmetteur.

Industrial cellular router doit être installé et utilisé avec une distance minimale de 20cm entre le radiateur & votre corps.