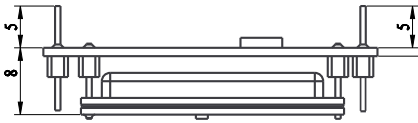
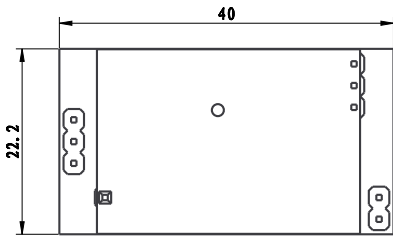


多普勒雷达传感器规格书

Microwave Sensor Specification

5.8GHz



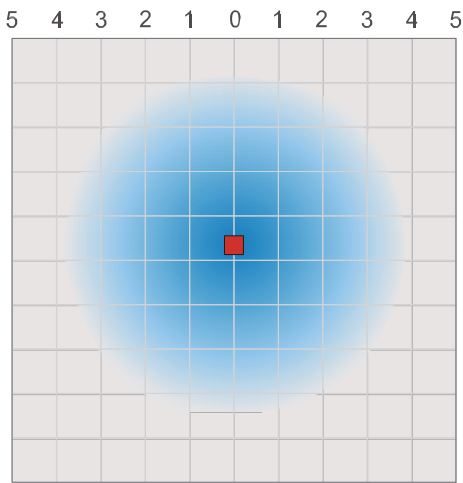
外形尺寸图 (mm)
 Dimension drawing

AL0580WP2



规格参数 Specifications

感应范围 Sensing range



项目 ITEM	参数 PARAMETER			备注 REMARK
	最小 Min.	典型 Typ.	最大 Max.	
极限参数 Absolute maximum ratings				
工作电压 Operate Voltage	7.5V		24V	
工作温度 Operate Temperature	-20℃		85℃	
存储温度 Storage Temperature	-40℃		85℃	
存储湿度 Storage Humidity			95%	At 35℃
电气特性 Electrical Characteristics (at 12V +25℃)				
工作电流 Operate Current			25mA	设计保证 Design assurance
中心频率 Center Frequency	5.725GHz	5.8G	5.875GHz	
发射功率 Output Power	-30dBm		0dBm	
感应距离 Detection Range (天花安装, 挂高 2.8 米 Ceiling Mounting, Mounting height 2.8 m)	2m		4m	设计保证 Design assurance
亮灯时间 Light ON Time	27min	30min	33min	
认证 Certification	FCC			

WWW.aurolite.net

ISO9001

引脚说明 Pin Description



功能说明 Function Description

正常模式

1. 按上图接入 DC7.5-24V 电源，上电输出 0V
2. 探测范围内 1800 秒无人运动时，输出 5V
3. 探测范围内有人运动时（有效触发），输出 0V，探测范围内有持续运动时，持续输出 0V
4. 人离开后未检测到有效运动，1800 秒后输出 5V

1. Connect the sensor to DC7.5-24V, the OUT pin will output 0V
2. If the sensor detects no movement in the detect range about 1800 seconds, the OUT pin out 5V
3. If the sensor detects movement in the detect range, the OUT pin out 0V ,If the sensor continued detects movement in the detect range, the OUT pin continued output 0V
4. After the sensor detects no movement about 1800 seconds, the OUT pin output 5V

测试模式

1. 短路 S1 两个焊盘
2. 按上图接入 DC7.5-24V 电源，上电输出 0V
3. 5 秒后，输出 5V
4. 探测范围内有人运动时（有效触发），输出 0V，探测范围内有持续运动时，持续输出 0V
5. 人离开后未检测到有效运动，2 秒后输出 5V

1. Short the two pads of the S1
2. Connect the sensor to DC7.5-24V, the OUT pin will output 0V
3. After 5 seconds, the OUT pin out 5V
4. If the sensor detects movement in the detect range, the OUT pin out 0V ,If the sensor continued detects movement in the detect range, the OUT pin continued output 0V
5. After the sensor detects no movement about 2 seconds, the OUT pin output 5V

FCC Warning and Notes

Warning: Changes or modifications to this unit not expressly approved by the party responsible for compliance could void the user's authority to operate the equipment.

NOTE: This equipment has been tested and found to comply with the limits for a Class B digital device, pursuant to Part 15 of the FCC Rules. These limits are designed to provide reasonable protection against harmful interference in a residential installation. This equipment generates, uses and can radiate radio frequency energy and, if not installed and used in accordance with the instructions, may cause harmful interference to radio communications.

However, there is no guarantee that interference will not occur in a particular installation. If this equipment does cause harmful interference to radio or television reception, which can be determined by turning the equipment off and on, the user is encouraged to try to correct the interference by one or more of the following measures:

- Reorient or relocate the receiving antenna.
- Increase the separation between the equipment and receiver.
- Connect the equipment into an outlet on a circuit different from that to which the receiver is connected.
- Consult the dealer or an experienced radio/TV technician for help.

This device complies with Part 15 of the FCC Rules. Operation is subject to the following two conditions: (1) this device may not cause harmful interference, and (2) this device must accept any interference received, including interference that may cause undesired operation.