

User Manual

3Way Smart Dimmer Switch

Contents

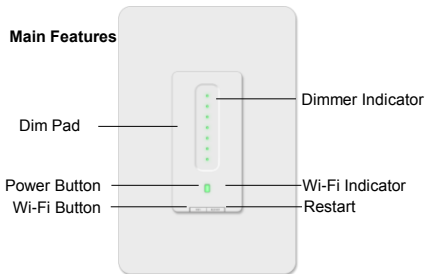
Part 1: General.....	2
1.1. Specification	2
1.2. Main Features	2
Part 2: Installation and Wire Connection.....	3
Part 3: Connect the WiFi Dimmer Switch to Wi-Fi	5
Part 3: Connect the Dimmer Switch to Alexa.....	15
Part 4: Connect the Dimmer Switch to Google Home.....	18

Part 1: General

1.1. Specification

Item	Description
Product Name	3Way Smart Dimmer Switch
Model	US-STD-TC01
Color	White
Voltage	100V-240VAC
Frequency	50-60Hz
Wattage	150W (LED)

1.2. Main Features



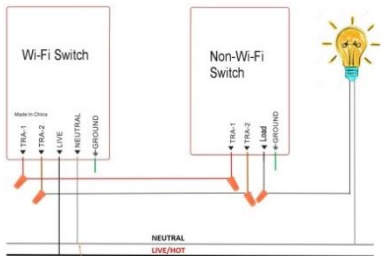
- Works with Alexa & Google Assistant for voice control
- ONLY compatible with 2.4G Wi-Fi, DO NOT use it under 5GHz
- FREE iOS and Android App is available to control it anywhere
- Set schedule and timing to automatically turn on/off
- Manually turn on/off the switch by the Main Button
- Dimmer : Dimmable LED, CFL, halogen & incandescent Bulbs

Part 2: Installation and Wire Connection

Notice:

1. As the switch needs power for itself, three lines must be connected (Live Line, Load Line and Neutral Line);
2. Please use the wire nuts to make the copper conductors fully concealed;
3. If you really cannot find out a Neutral Line in your Power line Socket, **STOP** installing the switch and consult with a professional electrician or contact our service team.

Wiring Diagram for 3-Way WiFi Switch



Neutral Wire is necessary

Send us a photo of the wires in your box if any doubt

Step 1: Turn off power at the circuit breaker that controls the light switch. Use voltage tester to **confirm no voltage** is present.

Step 2: Remove existing faceplate and light switch, then identify Live/Load, Neutral and Ground lines.

Step 3: Connect the Smart Switch wiring with the provided wire connectors as follows:

- **Black** wire on switch (Live Line) → Live Line
- **White** wire on switch (Neutral Line) → Neutral line
- **Green** wire on switch (Ground Line) → Ground line

If use it as a Single Pole:

- **Red** wire on switch (Load Line) → Load line to light bulbs
- **Capped the Brown wire**

If use it for 3-way:

- **Red & Brown** wire on switch → Travelers to slave switch

Please wrap electrical tape around the wire nuts to make sure the copper conductor is fully concealed.

Part 3: Connect the 3Way Smart Dimmer Switch to Wi-Fi

Step 1: Download the App

Scan the QR code or search "Smart Life" in the App Store or Google Play



smartapp.tuya.com



Smart Life

Formal version

Download



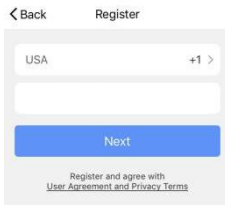
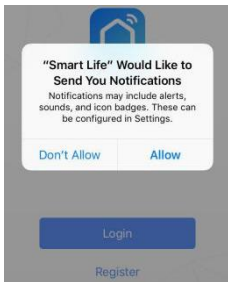
smartapp.tuya.com

Open in "App Store"?

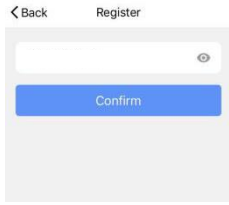
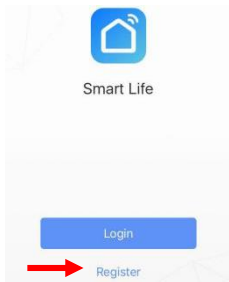
Cancel Open

Download

Step 2: Register a New Account



***Register with phone number
or email address***



***Password must contain
6-20 letters and numbers***

Step 3: Turn on the power at the circuit breaker. Press the Wi-Fi Button and then the Wi-Fi Indicator light flashes quickly in Red.

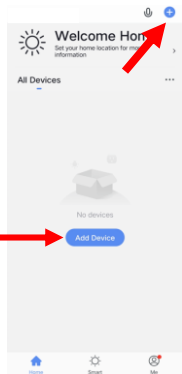
Flash Quickly in Red: Pairing Mode (EZ mode)

Constant Green Dimmer Indicator & Wi-Fi Indicator: Power ON, Wi-Fi Connected

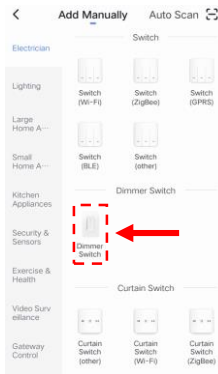
Constant Red Wi-Fi Indicator: Lost Wi-Fi Connection

Dimmer Indicator OFF: Power OFF

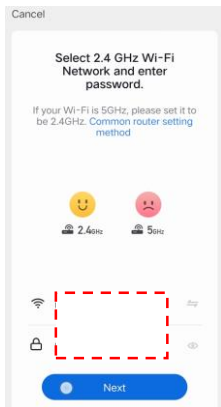
Step 4: Tap + to Add a device in your App (Smartphone should connect to 2.4GHz Wi-Fi).



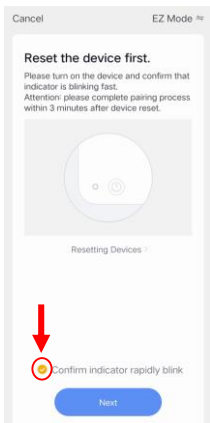
Step 5: Select "Dimmer Switch"



Step 6: Select 2.4 GHz Wi-Fi network and enter your password. (Your phone should have connected to the same Wi-Fi first)



Step 7: Select Confirm and tap Next.



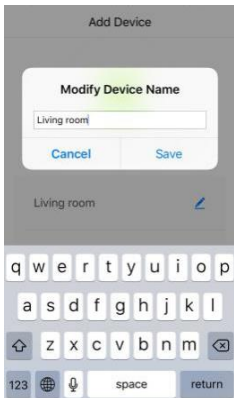
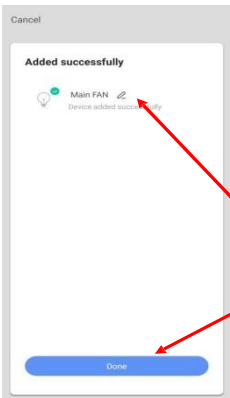
Step 8: It will be added in around 20 seconds.

-----If it fails,

try to reconnect and contact the seller for help.

After the device is added, Input a proper name and click "Done".

Simple Names will be easier to be identified by Echo or Google Home.



Step 9: The switch is connected and you can control it by this App. If you need voice control, please refer to Part 3 for Alexa, Part 4 for Google Assistant.

Congratulations! Now you can turn on/off the smart dimmer switch via App on your smartphone.

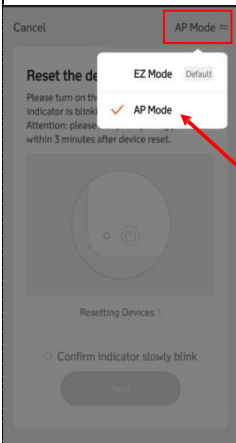
**If the above pairing method (EZ mode) fails several times,
Please try AP mode as follows:**

Step 10: Set the switch to AP mode

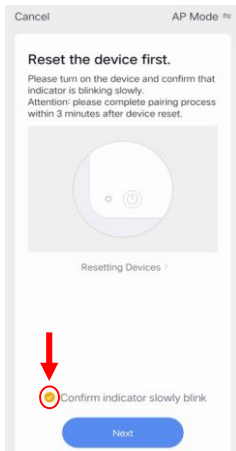
1. Press the Wi-Fi button once and you will see the indicator blinks quickly.

2. Then press and hold the Wi-Fi button for 5-8s until the indicator blinks slowly.

Step 11: After “Step 6: Select 2.4 GHz Wi-Fi network and enter your password,” Tap “EZ Mode” on the top right and select “AP Mode”.



Step 12: Select Confirm and tap Next.



Step 13: Connect your phone to the device's hotspot like "Smart Life_xxxx".

Connect your mobile phone to the device's hotspot

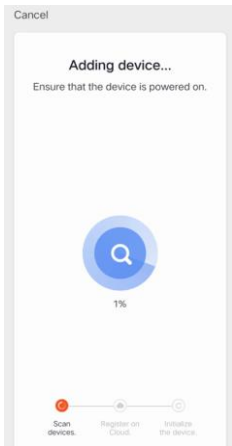
1. Please connect your phone to the hotspot shown below



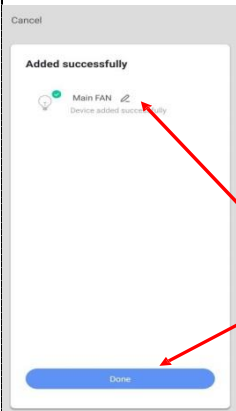
2. Return to this app and continue adding devices



Step 13: After selecting hotspot like "Smart Life_xxxx" in Wi-Fi setting page, go back to the App and it will connect automatically.



Step 14: It will be added in around 20 seconds. After the device is added, Input a proper name and click "Done".



FQA:

1. Cannot download the right App.

A: Please come back to step 1 and download by scanning the QR code. Please use a smartphone rather than tablet.

3. No light comes out from the Main button/indicator

A: Please check the wire connection and press the restart button if necessary, then the Wi-Fi Indicator will blink quickly.

2. Cannot discover the smart switch by App.

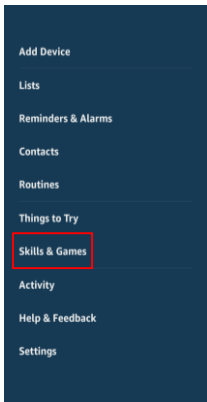
A: Make sure that your Wi-Fi router is 2.4GHz;
DHPC is enabled in the Wi-Fi router;
the phone connects to the same Wi-Fi;
the Wi-Fi indicator flashes quickly.

Part 3: Connect the Dimmer Switch to Alexa

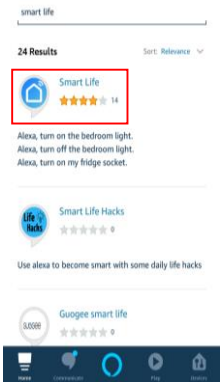
Part 2 must be completed before doing this part 3



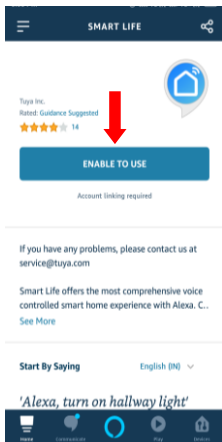
Step 1: Log in your Alexa account on a smartphone or a computer, then tap Home → Skills



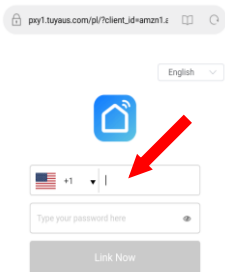
Step 2: Search “Smart Life” and select the right one according to the blue logo (same with App)



Step 3: Enable the skill



Step 4: Login the account you registered on the App in Part 2, then click "Link Now"



***The account and password should be the same as you registered in the Smart Life App.
DO NOT input your Alexa account or use another account.***

Step 5: The Account is linked successfully, and then tap Authorize to Complete.



Alexa by Amazon will be able to:

Receive your public profile
Control your devices over internet

Authorize

You can revoke permission at any time.

skills-store.amazon.in/external/link-req

amazon alexa



Smart Life has been
successfully linked.

What to do next:

– Close this window to discover smart
home devices you can control with Alexa.

Congratulations!

Alexa Devices (Echo) can
control the Switch now.

- To add or delete switches, please delete or add them in the Smart Life App (see Part 2), and then the Alexa will synchronize automatically.

- If you cannot see the name of switches in the Devices List in Alexa Page, you can click “Discover” in Alexa Page, it will synchronize from the Smart Life App.

NOTE:

If you want to control your smart devices through Amazon Alexa, you should assign a name to the switch. After naming the switch, use the name you assigned to the switch in the command. For example, if you set the switch name as "Bedroom light", the supported voice commands are as follows:

"Echo, turn ON Bedroom light". (Bedroom light will turn ON)

"Echo, turn OFF Bedroom light". (Bedroom light will turn OFF)

"Echo, Set 50% brightness for bedroom light". (Bedroom light brightness will be set to 50%).

"Echo, Set 70% brightness for bedroom light". (Bedroom light brightness will be set to 70%).

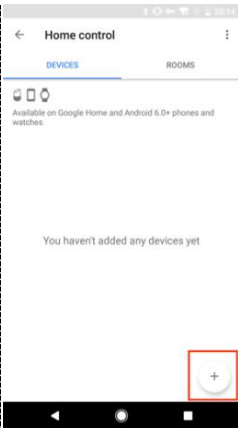
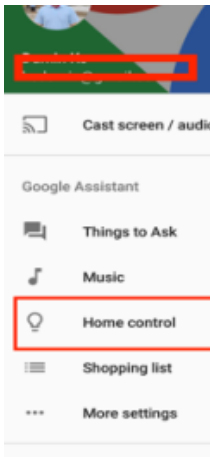
Now you can control the smart device with Amazon Alexa.

Part 4: Connect the Dimmer Switch to Google Home

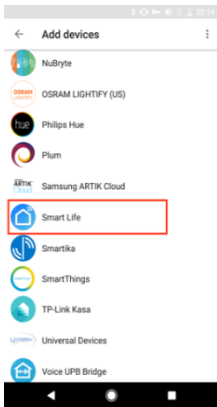


Part 2 must be completed before doing this part 4

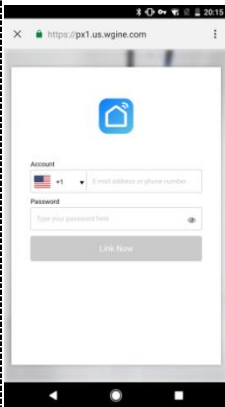
Step 1: Find "Home Control" in the hamburger menu on the Google Home app's home page -> Home Control -> tap "+".



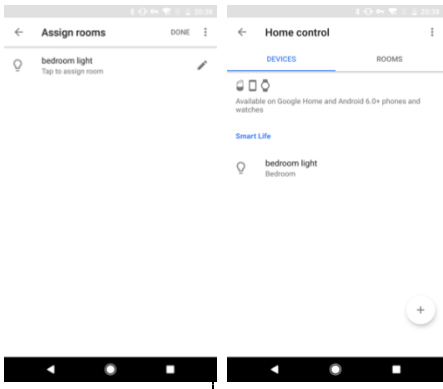
Step 2: Find "Smart Life" in the list.



Step 3: Input your Smart Life account and password you registered in Part 2, then tap "Link Now".



Step 4: After you assign rooms for the switch, your switch will be listed in the Home Control page.



Step 5: Control your smart switch through Google Home
Now you can control your smart switch through Google Home. If you set the name as “bedroom light”, the supported voice commands are as below:

Ok Google, turn on bedroom light.

Ok Google, set bedroom light to 50%.

Warning:

- Please install it by a professional electrician
- If there is radio frequency interference, it might affect the operation
- Indoor use only
- Do not use in bathroom and other damp locations
- Please ensure that the light bulb is within the capacity of this switch.

INC 400W

LED 150W

CFL 150W

- Please keep the device out of the reach of children for safety.

FCC Warning:

This device complies with Part 15 of the FCC Rules. Operation is subject to the following two conditions: (1) this device may not cause harmful interference, and (2) this device must accept any interference received, including interference that may cause undesired operation.

Changes or modifications not expressly approved by the party responsible for compliance could void the user's authority to operate the equipment.

NOTE: This equipment has been tested and found to comply with the limits for a Class B digital device, pursuant to Part 15 of the FCC Rules. These limits are designed to provide reasonable protection against harmful interference in a residential installation. This equipment generates uses and can radiate radio frequency energy and, if not installed and used in accordance with the instructions, may cause harmful interference to radio communications. However, there is no guarantee that interference will not occur in a particular installation. If this equipment does cause harmful interference to radio or television reception, which can be determined by turning the equipment off and on, the user is encouraged to try to correct the interference by one or more of the following measures:

--Reorient or relocate the receiving antenna.

--Increase the separation between the equipment and receiver.

--Connect the equipment into an outlet on a circuit different from that to which the receiver is connected.

--Consult the dealer or an experienced radio/TV technician for help.

NOTE: This device and its antenna(s) must not be co-located or operation in conjunction with any other antenna or transmitter

RF Exposure Statement

To maintain compliance with FCC's RF Exposure guidelines, This equipment should be installed and operated with minimum distance of 20cm the radiator your body. This device and its antenna(s) must not be co-located or operation in conjunction with any other antenna or transmitter