
User Manual – Smart Fan-Speed Control

Model: US-FC-01

Sep 2021

Content

READ HERE FIRST !!!.....	1
Video Demo: EZ mode for Wi-Fi Connection:	1
1. Download Smart Life App.....	1
2. Set the Switch to Pairing Mode.....	1
3. Pair the switch on App	2
AP mode for Wi-Fi Connection	5
Video Demo: AP Mode for Wi-Fi Connection	5

READ HERE FIRST !!!

1. The switch must work well manually after installation. If not, go back to the **wiring step** as below.
Single Pole US-FC-C01 ([click here](#))
2. WiFi router should be 2.4G WiFi. **CANNOT** support 5G (802.11av).
 - a. If you are using the dual band wifi router, please set a separate SSID for the 2.4G.
 - b. If you are using google wifi, which you cannot set a name for 2.4G, please stay far enough from the wifi router until your phone indicates 2.4G wifi connected.

Video Demo: EZ mode for Wi-Fi Connection:

<https://www.youtube.com/watch?v=JGUM-pCfO7s>



1. Download Smart Life App

Confirm that you have downloaded the right Smart Life App (Same Logo as the right side). If not, download it from the links

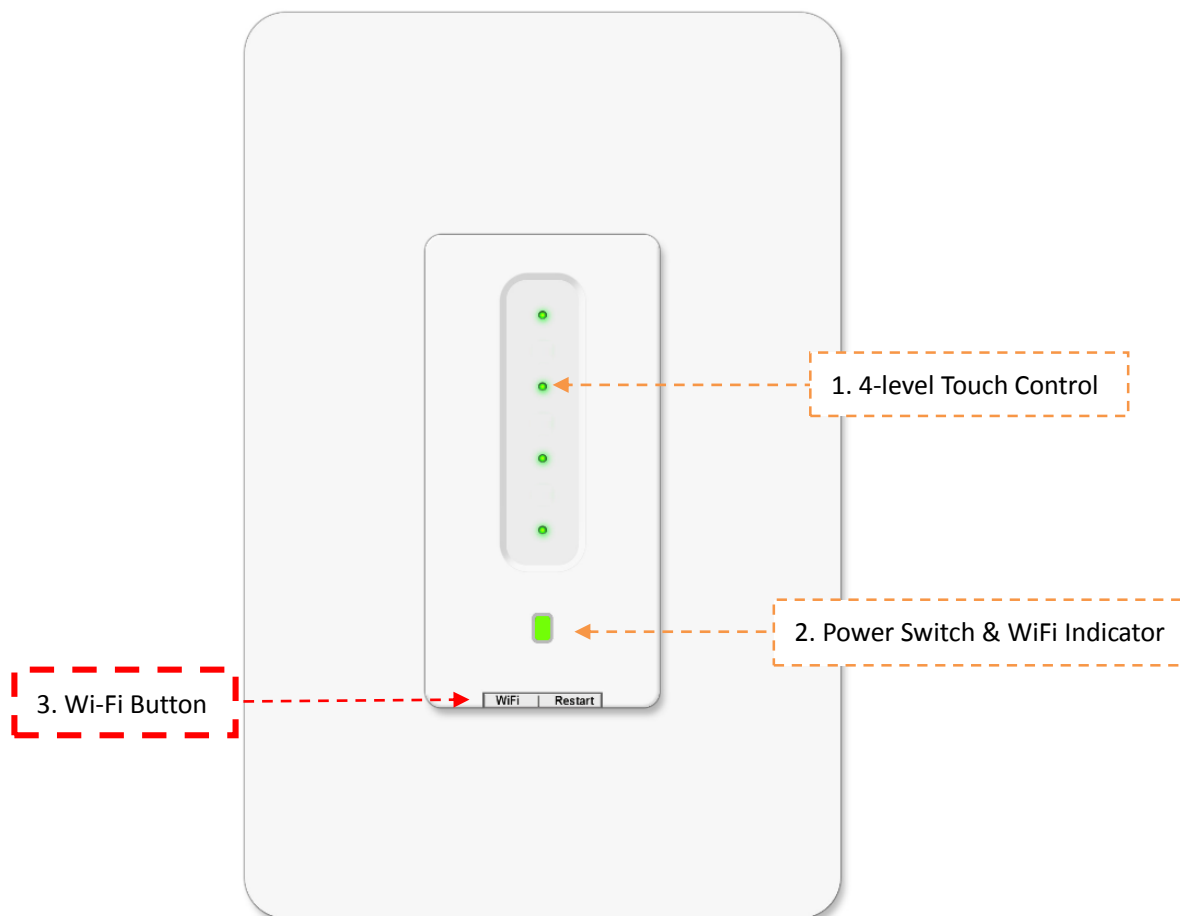
iPhone: <https://itunes.apple.com/us/app/smart-life-smart-living/id1115101477?mt=8>

Android: https://play.google.com/store/apps/details?id=com.tuya.smartlife&hl=en_US

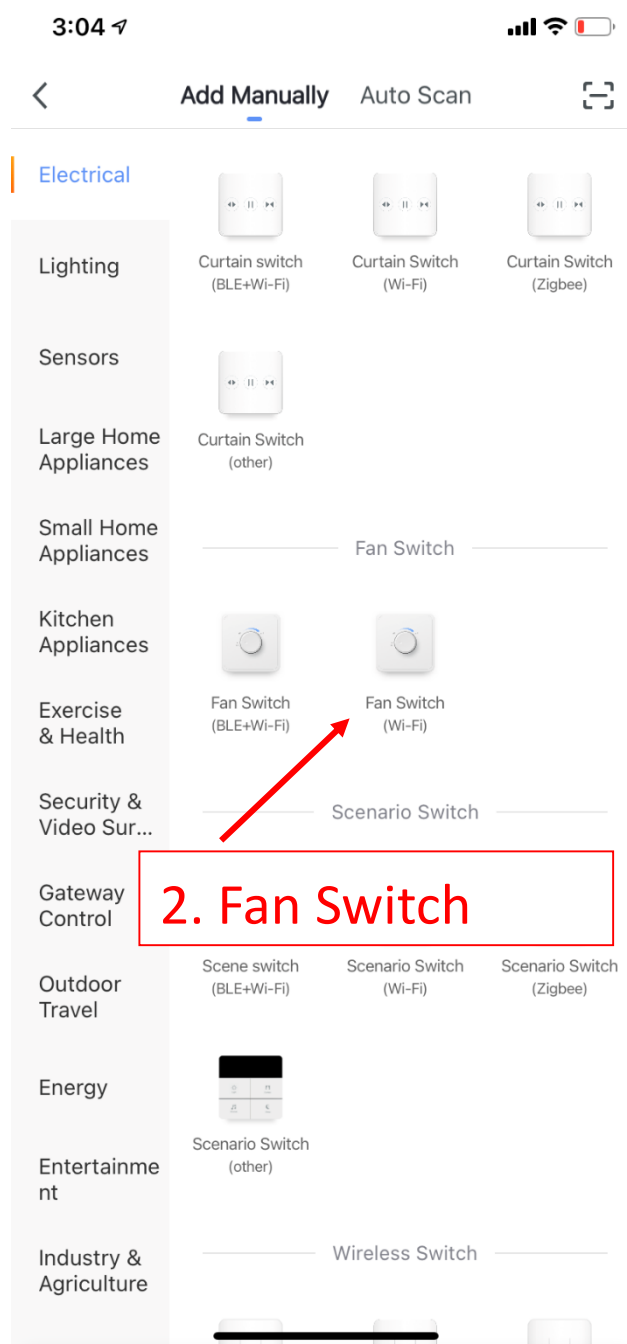
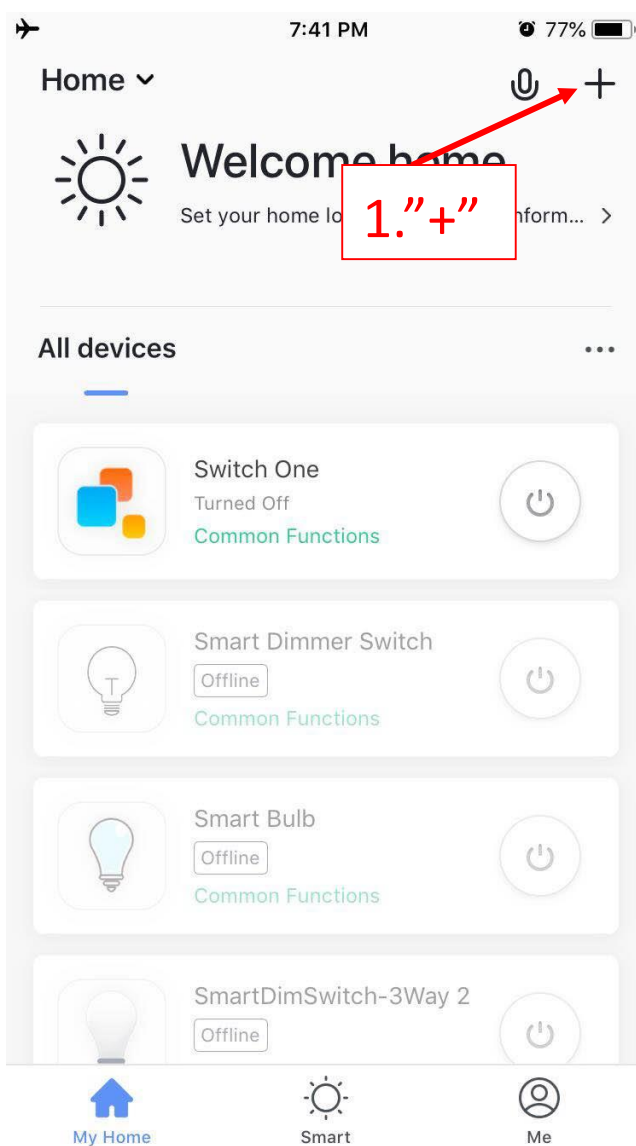


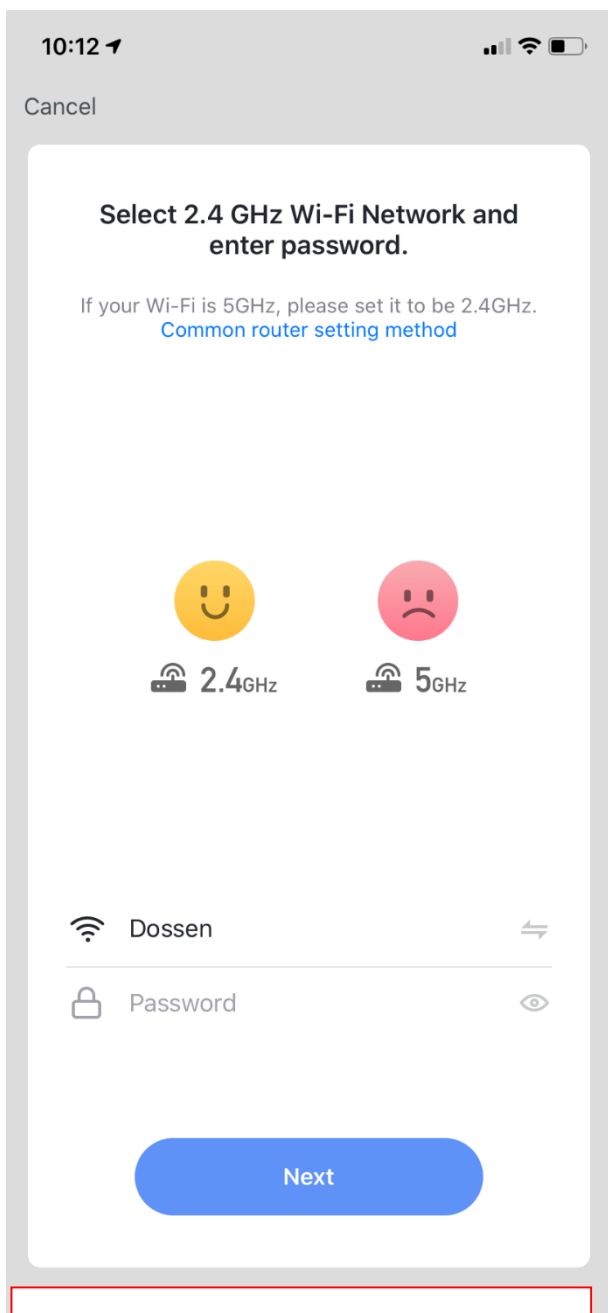
2. Set the Switch to Pairing Mode

2.1. After wiring, you will see the 2. indicator flashes in **RED** on the switch. If not, press the 3. Wi-Fi Button.

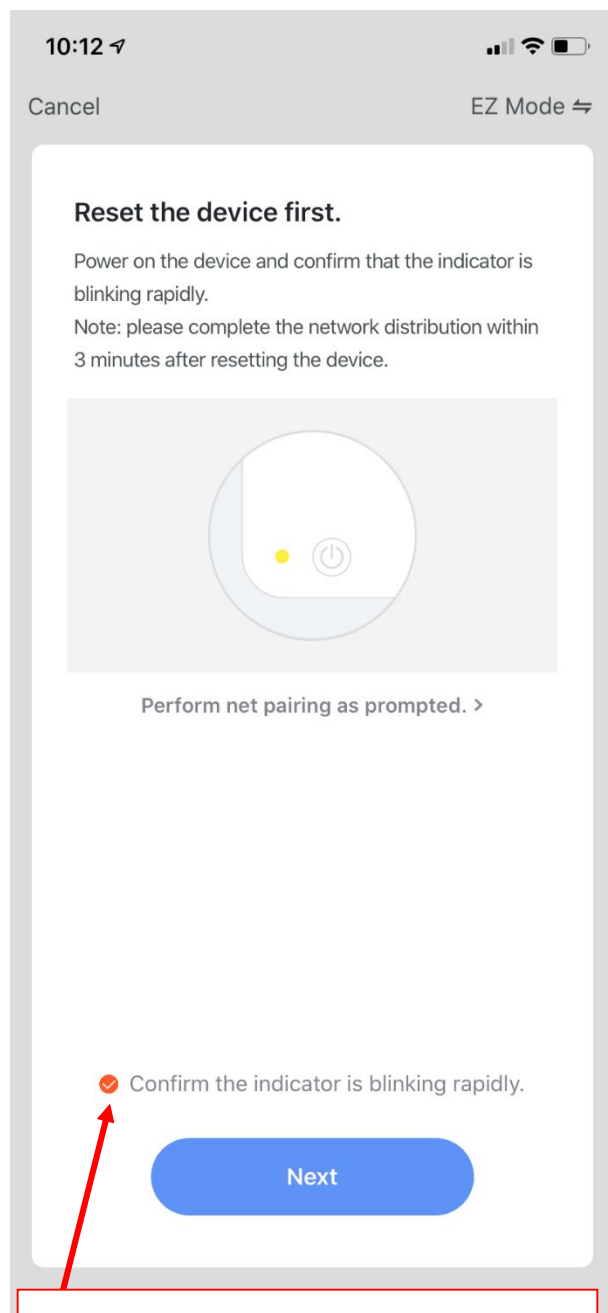


3. Pair the switch on App



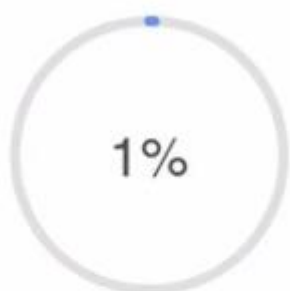


3. Input the password of your home WiFi (Must be 2.4G)



4. Indicator on switch is flashing quickly

Connecting...



1%

Place your router, mobile phone, and device as close as possible

- ✓ Device found
- Register Device to Smart Cloud
- Initializing device...

Connecting...



100%

Place your router, mobile phone, and device as close as possible

- ✓ Device found
- ✓ Register Device to Smart Cloud
- ✓ Initializing device...

10:56



Done

Added.



Device added successfully

4. Tap to set a name for the switch. Such as "ceiling fan"

10:56



Done

Added.



**If the above pairing method fails
several times,**

**Please go to the AP mode mentioned in
coming pages**

Video Demo: AP Mode for Wi-Fi Connection
<https://www.youtube.com/watch?v=dXEKoDysJCc>

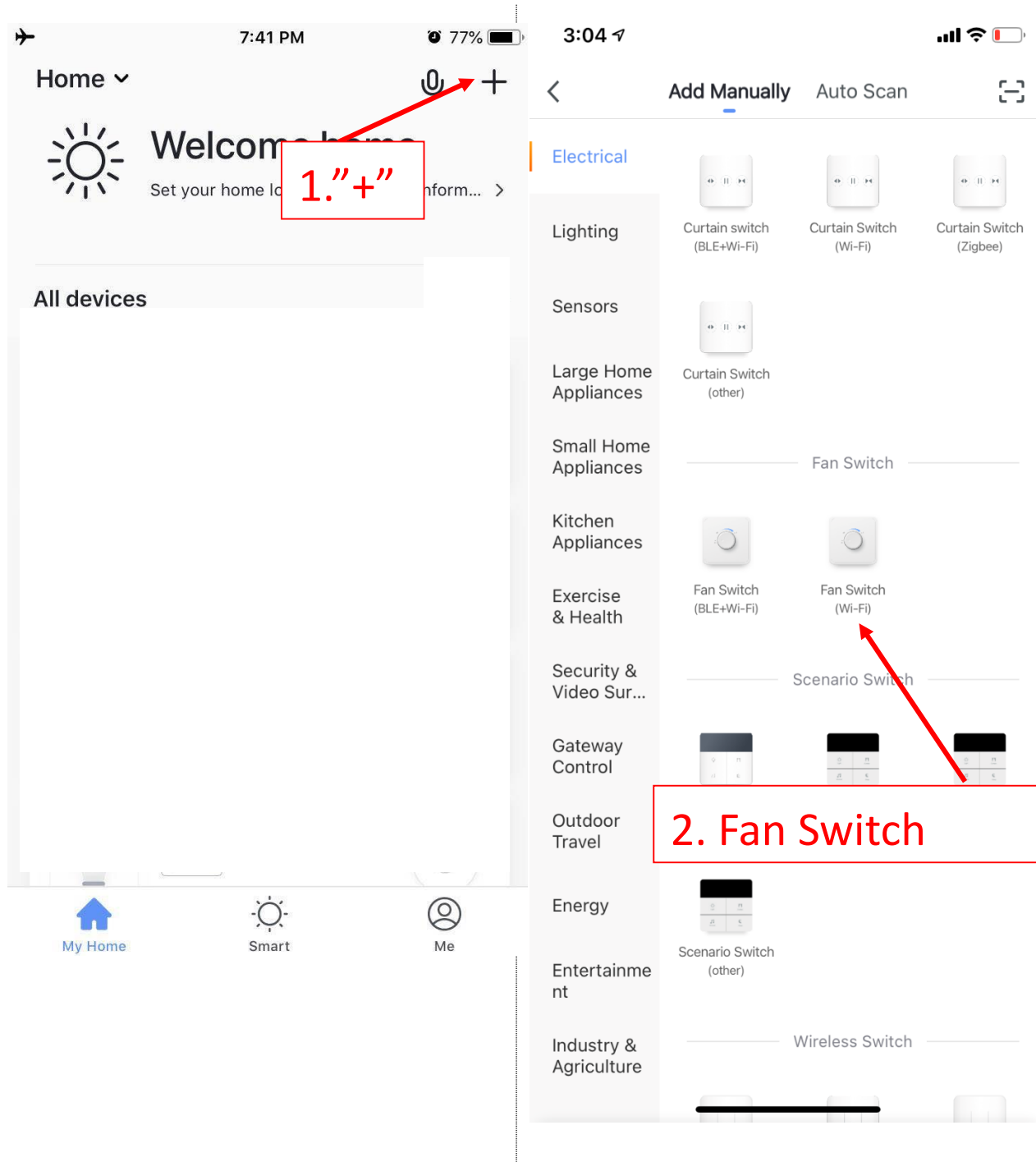


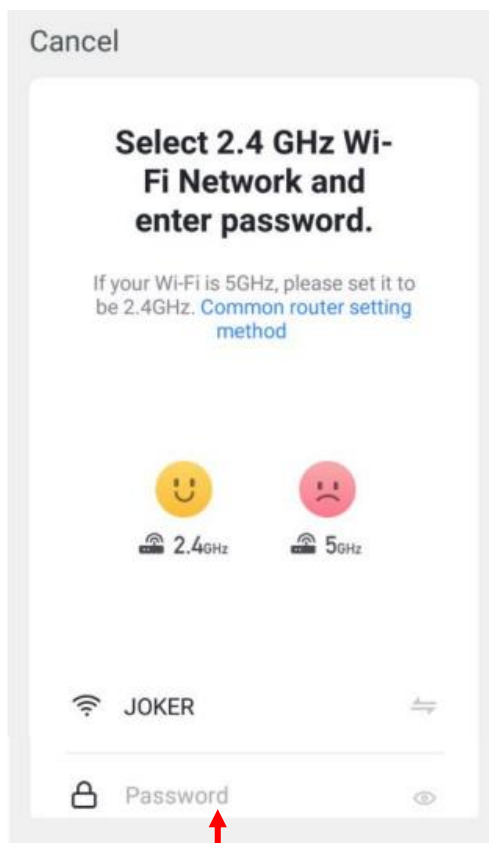
Model: US-FC-01

Step 1: Set the switch to AP mode

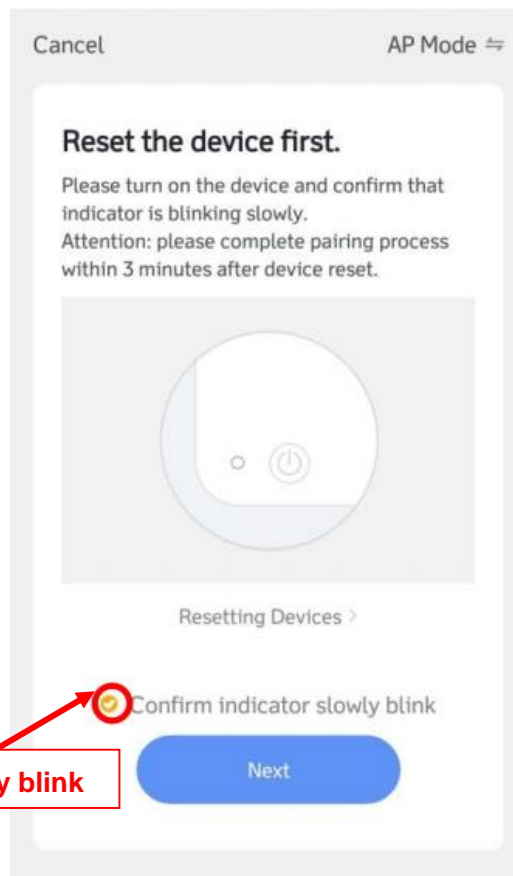
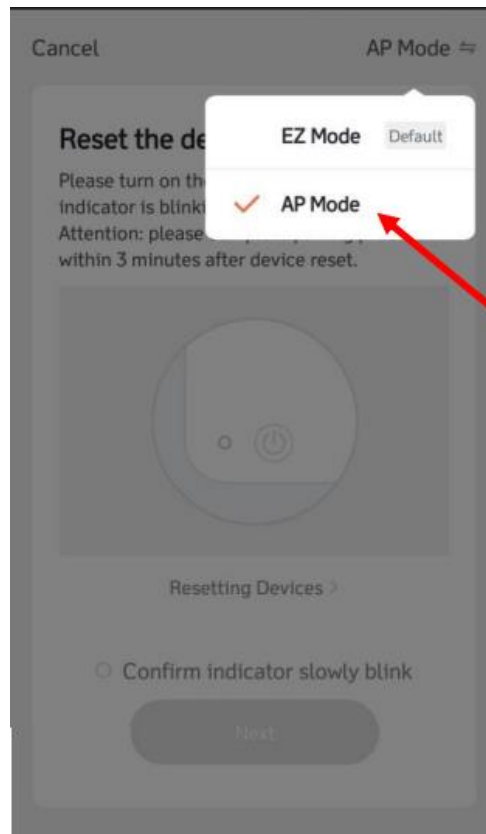
1. Press and hold the power button for 5-8s until the indicator blinks quickly.
2. Press and hold the power button for 5-8s until the indicator blinks slowly.

Step 2: Pair the switch on SmartLife App (AP mode)



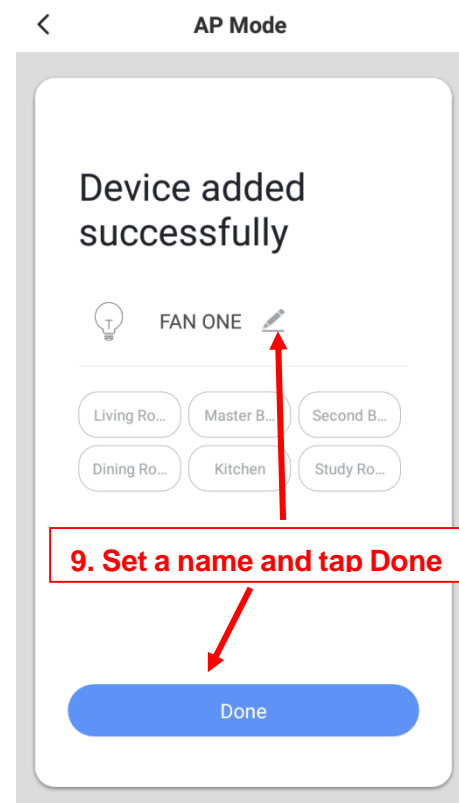
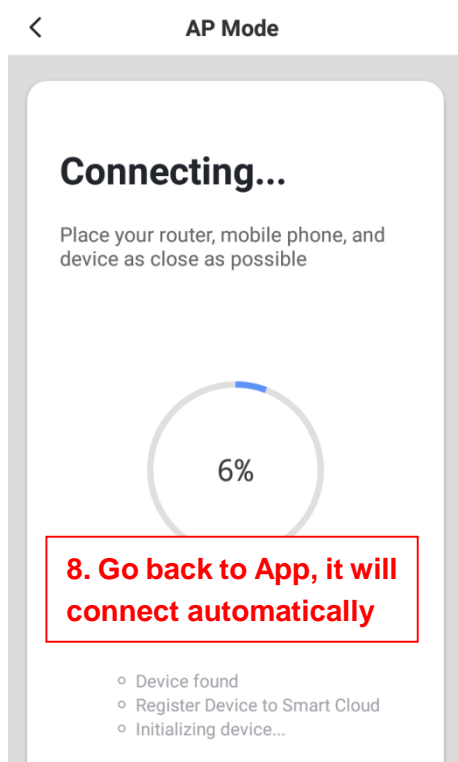
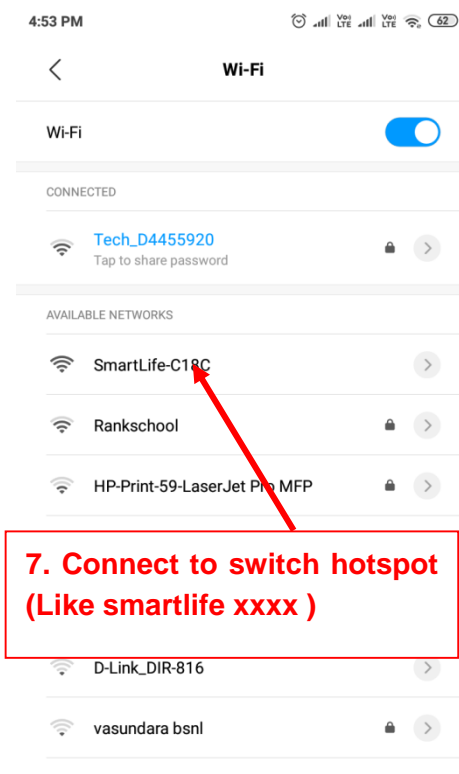
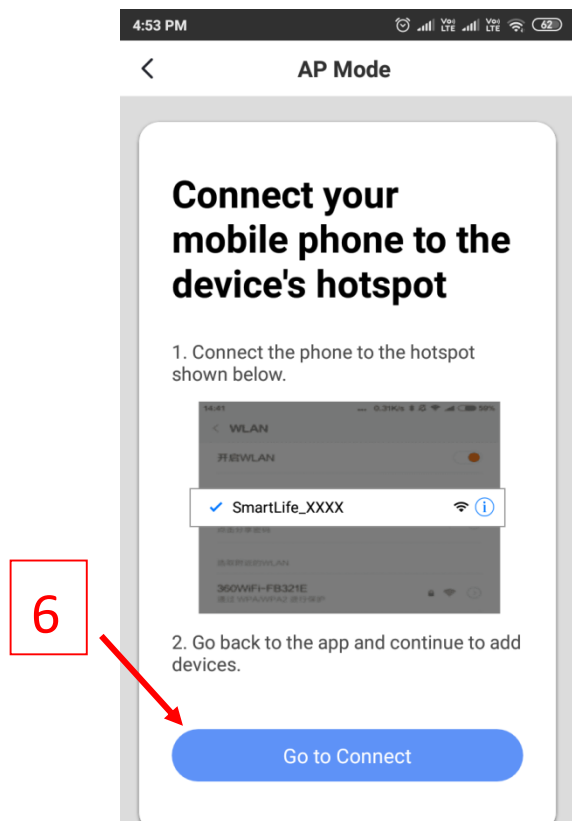


3. Input the password of your home WiFi (Must be 2.4G)



5 Confirm indicator slowly blink

Then, Connect the Hotspot from the Switch --> Back to App for pairing.



- End -

This equipment has been tested and found to comply with the limits for a Class B digital device, pursuant to Part 15 of the FCC Rules. These limits are designed to provide reasonable protection against harmful interference in a residential installation. This equipment generates uses and can radiate radio frequency energy and, if not installed and used in accordance with the instructions, may cause harmful interference to radio communications. However, there is no guarantee that interference will not occur in a particular installation. If this equipment does cause harmful interference to radio or television reception, which can be determined by turning the equipment off and on, the user is encouraged to try to correct the interference by one or more of the following measures:

- Reorient or relocate the receiving antenna.
- Increase the separation between the equipment and receiver.
- Connect the equipment into an outlet on a circuit different from that to which the receiver is connected.
- Consult the dealer or an experienced radio/TV technician for help.

This device complies with part 15 of the FCC Rules. Operation is subject to the following two conditions: (1) This device may not cause harmful interference, and (2) this device must accept any interference received, including interference that may cause undesired operation.

Changes or modifications not expressly approved by the party responsible for compliance could void the user's authority to operate the equipment.

This equipment complies with FCC radiation exposure limits set forth for an uncontrolled environment. This equipment should be installed and operated with minimum distance 20cm between the radiator and your body.