



User Manual

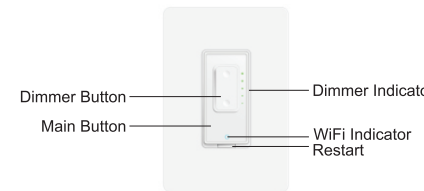
Smart Dimmer Switch

Part 1: General

1.1. Specification

| Item | Description |
|--------------|----------------------------------|
| Product Name | Smart Dimmer Switch |
| Model | SD01 |
| Color | White |
| Voltage | 100V-240VAC |
| Frequency | 50/60Hz |
| Wattage | Max 400W (INC), 150W (CFL & LED) |

1.2. Main Features

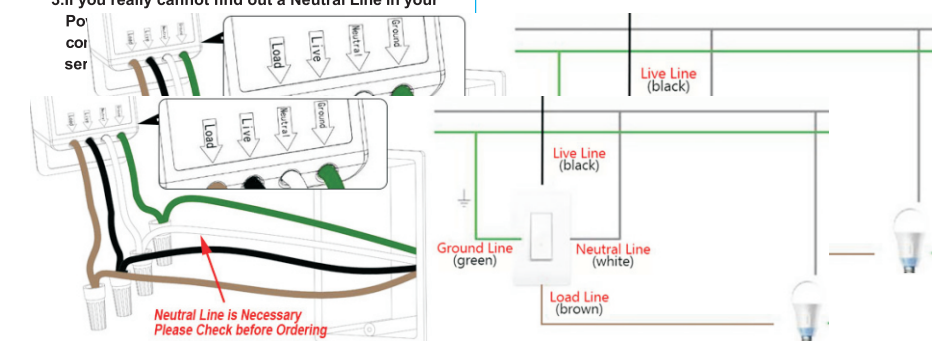


- Works with Alexa & Google Assistant for voice control
- ONLY compatible with 2.4G Wi-Fi, DO NOT use it under 5GHz
- FREE iOS and Android App is available to control it anywhere
- Schedule and timing it to automatically turn on/off
- Manually turn on/off the switch by the Main Button
- Dimmer : LED, CFL, halogen and incandescent Bulbs

Part 2: Installation and Wire Connection

Notice:

- 1.As the switch needs power for itself, three lines must be connected (Live Line, Load Line and Neutral Line);
- 2.Please use the wire nuts to make the copper conductors fully concealed;
- 3.If you really cannot find out a Neutral Line in your house,



- Step 1:** Turn off power at the circuit breaker that controls the light switch. Use voltage tester to confirm no voltage is present.
- Step 2:** Remove existing faceplate and light switch, then identify Live/Load, Neutral and Ground lines.

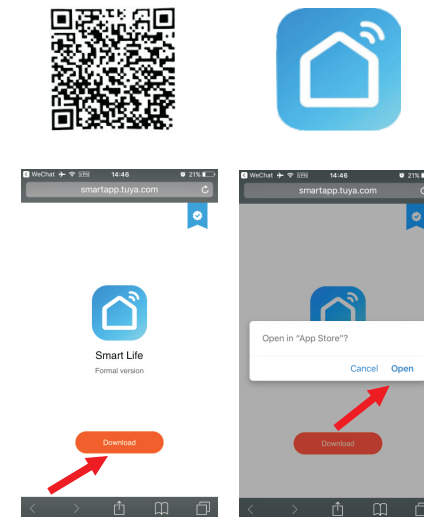
Step 3: Connect the Smart Switch wiring with the provided wire connectors as follows:

- Brown wire on switch (Load Line) to Load Line, like a bulb
- Black wire on switch (Live Line) to Live Line
- White wire on switch (Neutral Line) to Neutral line
- Green wire on switch (Ground Line) to Ground line

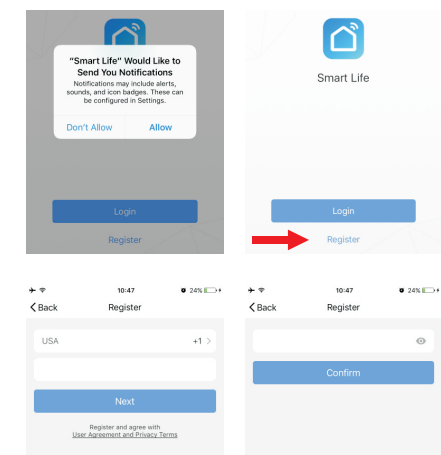
Please wrap electrical tape around the wire nuts to make sure the copper conductor is fully concealed.

Part 3: Connect the Smart Dimmer Switch to Wi-Fi

Step 1: Download the App Scan the QR code or search "Smart life" in the App Store or Google Play



Step 2: Register a New Account



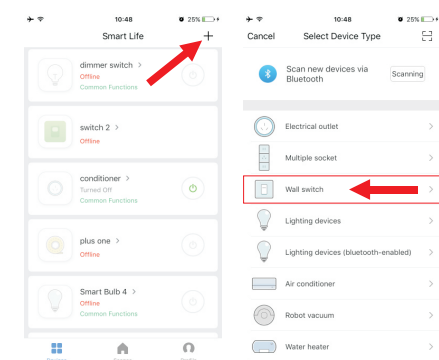
Register with phone number or email address

Password must contain 6-20 letters and numbers

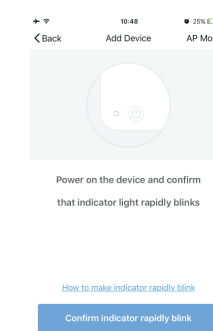
Step 3: Turn on the power at the circuit breaker and press the main button and hold it for 5 seconds, then the Wi-Fi Indicator light flashes quickly in red.

Flash Quickly in Red: Pairing Mode
Constant Red: Lost Wi-Fi Connection
Constant Blue: Connected Wi-Fi

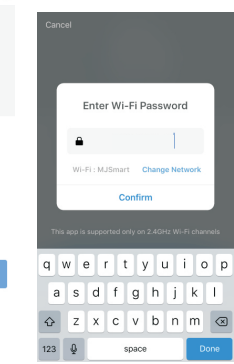
Step 4: Tap + to Add a device **Step 5:** Select "Wall switch" in your App (Smartphone should connect to 2.4GHz Wi-Fi).



Step 6: Confirm the indicator blinks quickly.

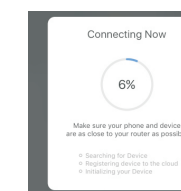


Step 7: Enter the Wi-Fi Password (Your phone should have connected to the same Wi-Fi first)

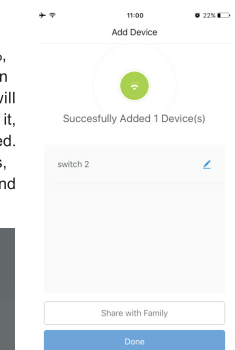


Step 8: It will be 100% in around 20 seconds.

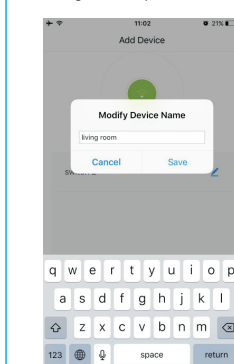
- If it fails,
- 1.reconnect
- 2.wait it goes to around 10%,
- 3.Press and hold the main button for 5 seconds, it will blink again. Then release it, the switch will be connected.
- 4.If the problem continues, repeat step 3 to step 7 and contact the seller for help.



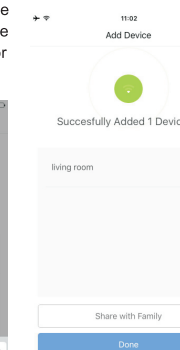
Step 9: Edit the name of your smart switch



Step 10: Delete the default name and input a new one (Simple Names will be identified easily by Echo or Google Home)



Step 11: Tap Done



Step 12: The switch is connected and you can control it by this App. If you need voice control, please refer to Part 3 for Alexa, Part 4 for Google Assistant.

Congratulations! Now you can turn on/off the smart dimmer switch via App on your smartphone.

FQA:

1.Cannot download the right App.

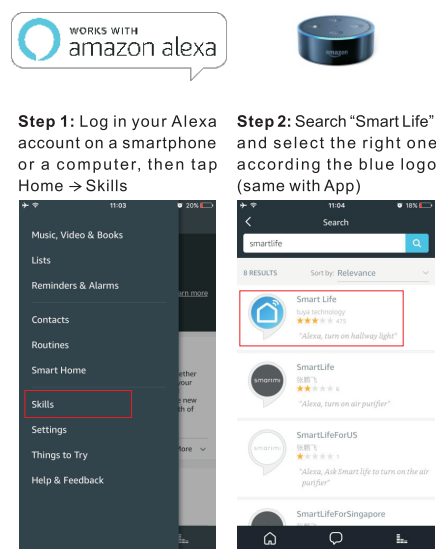
A: Please come back to step 1 and download by scanning the QR code. Please use a smartphone rather than tablet.

2.Cannot discover the smart switch by App.

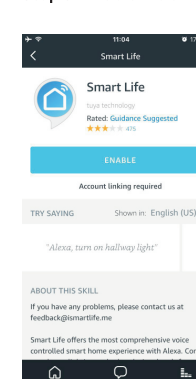
A: Make sure that your Wi-Fi router is 2.4GHz; DHCP is enabled in the Wi-Fi router, the phone connects to the same Wi-Fi; the Wi-Fi indicator flashes quickly

Part 3: Connect the Dimmer Switch to Alexa

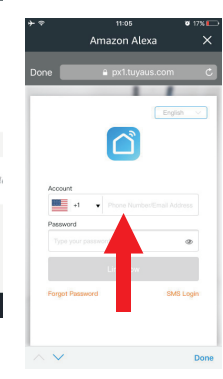
Part 2 must be completed before doing this part 3



Step 3: Enable the skill

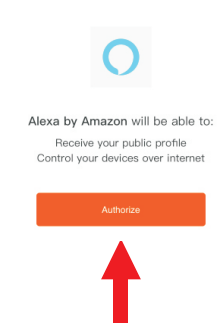


Step 4: Login the account you registered on the App in Part 2, then click "Link Now"



The account and password should be the same that you registered in the smart life app

Step 5: The Account is linked successfully, and then tap Authorize to Complete.

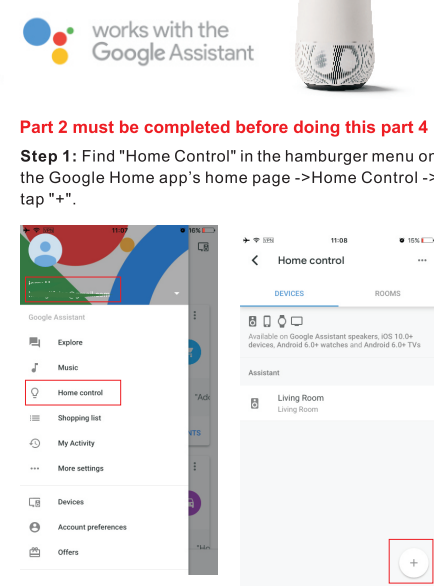


Step 6: Congratulations! Alexa Devices (Echo) can control the Switch ON/OFF.

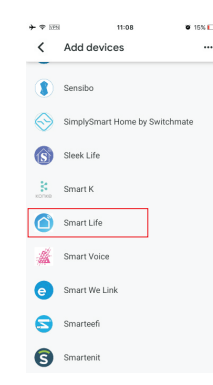
- To add or delete switches, please delete or add them in the Smart Life App (see Part 2), and then the Alexa will synchronize automatically.
- If you cannot see the name of switches in the Devices List in Alexa Page, you can click "Discover" in Alexa Page, it will synchronize from the Smart Life App.

Part 4: Connect the Dimmer Switch to Google Home

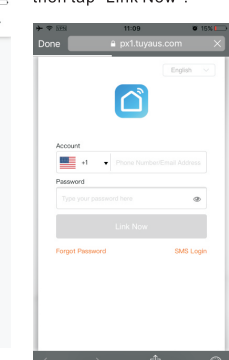
Part 2 must be completed before doing this part 4



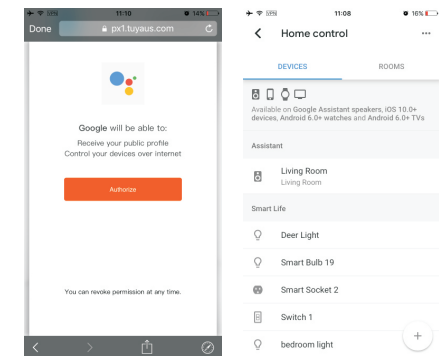
Step 2: Find "Smart Life" in the list.



Step 3: Input your Smart Life account and password you registered in Part 2, then tap "Link Now".



Step 4: After you assign rooms for the switch, your switch will be listed in the Home Control page.



Step 5: Control your smart switch through Google Home Now you can control your smart switch through Google Home. If you set the name as "bedroom light", the supported voice commands are as below:

Ok Google, turn on bedroom light.
Ok Google, set bedroom light to 50%.

Warning:

- Please install it by a professional electrician
- If there is radio frequency interference, it might affect the operation
- Indoor use only
- Do not use in bathroom and other damp locations
- Please ensure that the light bulb is within the capacity of this switch.
- Please keep the device out of the reach of children to avoid danger.

FCC Warning:

This equipment has been tested and found to comply with the limits for a Class B digital device. Pursuant to part 15 of the FCC Rules. These limits are designed to provide reasonable protection against harmful interference in a residential installation. This equipment generates, uses and can radiate radio frequency energy and, if not installed and used in accordance with the instructions, may cause harmful interference to radio communications. However, there is no guarantee that interference will not occur in a particular installation. If this equipment does cause harmful interference to radio or television reception, which can be determined by turning the equipment off and on, the user is encouraged to try to correct the interference by one or more of the following measures:

- Reorient or relocate the receiving antenna.
- Increase the separation between the equipment and receiver.
- Connect the equipment into an outlet on a circuit different from that to which the receiver is connected.

• Consult the dealer or an experienced radio/TV technician for help.

Caution: Any changes or modifications to this device not explicitly approved by manufacturer could void your authority to operate this equipment. This device complies with part 15 of the FCC Rules. Operation is subject to the following two conditions: (1) This device may not cause harmful interference, and (2) this device must accept any interference received, including interference that may cause undesired operation. This equipment complies with FCC radiation exposure limits set forth for an uncontrolled environment. This equipment should be installed and operated with minimum distance 20cm between the radiator and your body. This transmitter must not be co-located or operating in conjunction with any other antenna or transmitter.

Made In China