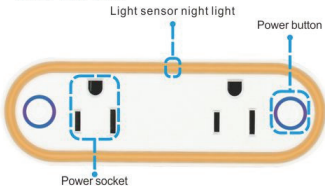


Smart Plug Mini 2 in 1 User Manual Model: MJ-CV01

Input Voltage: AC 100V - 240V
Output: 16A Maximum Load
Wireless Type: 2.4GHz, 1T1R
App Support: IOS / Android
Supported Load Types:
Coffee Maker: 800 W
Desk Lamp: 235.2 W
Heater: 1500W
Humidifier: 260 W
Iron: 1500 W
Toaster: 850 W
Tower Fan: 50 W



Warm White LED Night Light

The Auto dusk to dawn sensor warm white LED night light will detect the light intensity. It lights up automatically at night, goes off during the daytime. Just plug in, no need to turn on/off the light.

Smart WiFi Plug

Simplified steps to install app on your smart device and pair with Amazon Alexa, Google Assistant and IFTTT using Smart Life App on App Store/Google Play Store. Compatible with any smart phone or tablet including both Android and iOS systems.

How to connect Smart Plug Mini to Wi-Fi network

1. Download **Smart Life** from [App Store](#) or [Google Play](#).
Download or scan the QR code and install the Smart Life App for either IOS or Android.
Once downloaded, the app will ask you to register your device. Enter your phone number or email whichever makes you feel comfortable and select the country you live in. If phone number selected you will receive a text with a registration code. If you choose email you will then create a password.



Attention: There's no Registration Code needed if email method chosen.

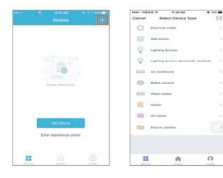
1



Please note: there're two modes configurations (Quick Mode/AP Mode) available for you to choose before adding the device to app. Quick Mode is recommended.

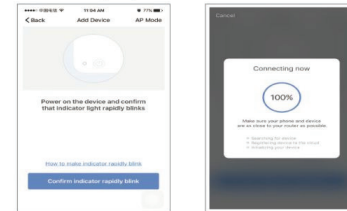
Quick Mode Configuration (Common)

1. Make sure quick mode configuration is initiated: the indicator light blinks blue rapidly (twice per second). If it blinks blue slowly (once every 3 seconds), press and hold the power button on the Mini Smart Plug for 6 seconds until the indicator light blinks rapidly.
2. Tap the icon "+" on the top right corner of "Smart your smart life", choose your device type and enter into "Add Device".



2

3. Follow the in-app instructions to connect the Smart Plug to your Wi-Fi network.

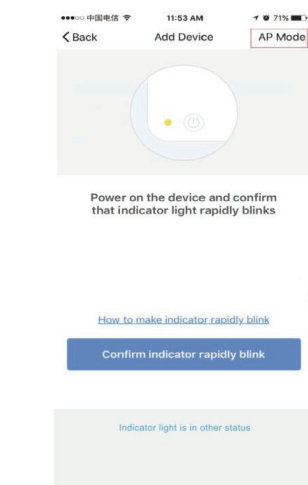


4. Once connected, the App will prompt the connection, and click "Done".
5. Now you can control the Mini Smart Plug through **Smart Life** App.
6. Once the configuration is completed successfully, the indicator light will turn to solid red and the device will be added to the "Device List".

AP Mode Configuration

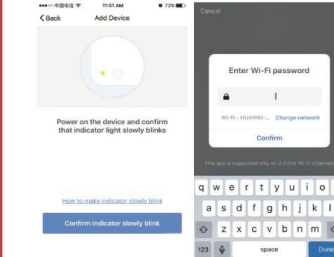
1. Make sure AP mode configuration is initiated: the indicator light blinks blue slowly (once every 3 seconds). If it blinks blue rapidly (twice per second), press and hold the power button on the Mini Smart Plug for 6 seconds until the indicator light blinks slowly.

2. Tap the icon "+" at the top right corner of "Start your smart life" tab and then click "AP Mode" at the top right corner of "Add Device" tab to add device.



4

3. Follow the in-app instructions to connect the Mini Smart Plug to your Wi-Fi network.



4. Once connected, the App will prompt the connection, and click "Done".
5. Now you can control the Mini Smart Plug through **Smart Life** APP.

6. Once the configuration is completed successfully, the indicator light will turn to solid red and the device will be added to the "Device List".
Please note: you can add the Smart Plug Mini to Echo/Google Home following this instructions below. Or the one on the app (Open Smart Life App, go to "Profile" -> "Integration", tap "amazon echo" or "Google Home" and install).

5

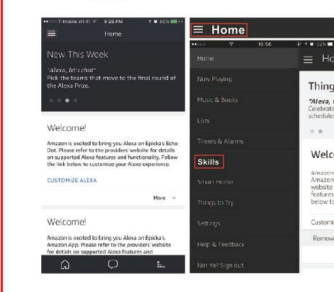
How to connect Smart Plug Mini to Amazon Alexa

1. Launch **Smart Life** App, sign in your account and make sure Mini Smart Plug is in device list.

2. Modify device name so that Alexa can easily recognize, such as: Living room Light, Bedroom Light, etc.

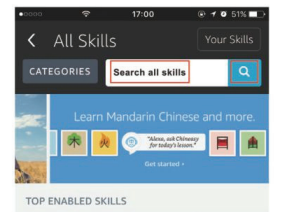
3. Minimize **Smart Life** App, then launch the Alexa App and sign in your Alexa account and make sure you have at least one Alexa voice-controlled device installed like Echo, Echo dot, etc.

4. In the upper left corner of Home page, click **Skills** button to show App menu. Then clicks **Skills** in the menu.

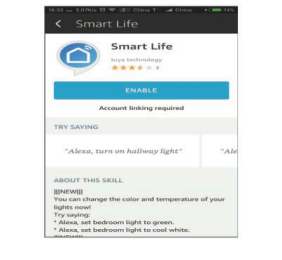


6

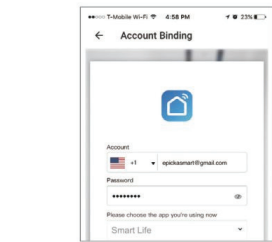
5. Type in "Smart Life" in the search and click the search button next to it.



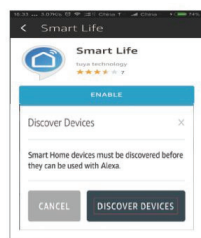
6. Enable Smart Life Smart Skill then sign in your **Smart Life** account to complete the account linking.



7

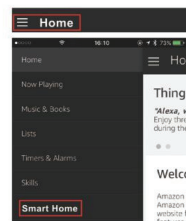


7. After successful account linking, ask Alexa to discover devices. After a 20-second device discovery, Alexa will show all the discovered devices.

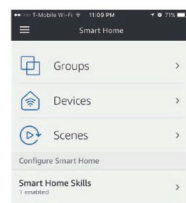


8

8. Back to Menu by clicking **Menu** button, and then click **Smart Home** button.



9. In Smart Home page, you can group your devices for different categories. Your **Smart Life** App has been skilled with Alexa. Now you can control your Smart Plug through Alexa.

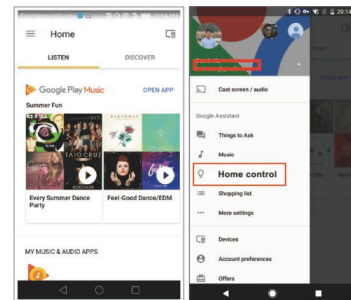


9

How to connect Smart Plug Mini to Google Home

1. Launch the Google Home App and make sure Google Home speaker is installed. If not, please follow Google Home speaker installation instruction to complete the installation.

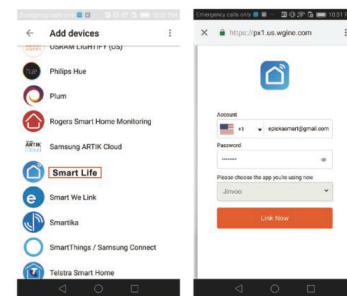
2. Once Google Home is installed, in the upper left corner of App Home page, click **Menu** button to show App menu. Then clicks "Home Control" in the menu.



10

3. On "Add devices" page, scroll down to find "Smart Life" and then click it. Sign in Smart Life App with your Smart Life App account and password choose

Smart Life App in the dropdown menu to complete the account linking.

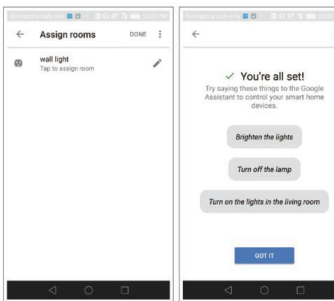


11

4. After successful account linking, in Google Home App you can see all the smart devices from your **Smart Life** App account. You can assign rooms for each device.

5. Now you can use Google Home to control your smart devices, you can say like:

Ok Google, turn on/off wall light
Ok Google, set bedroom light to red



12

Troubleshooting and FAQ

1. What devices can I control with the Mini Smart Plug?

You can control lights, fans, portable heaters, and any small appliances in accordance with the Mini Smart Plug's specifications.

2. What should I do when I cannot turn Mini Smart Plug on or off?

- Make sure your mobile devices and the Mini Smart Plug are connected to the same Wi-Fi network.
- Make sure the devices connected to the Mini Smart Plug are turned on.

3. What should I do when device configuration process has failed?

- You could:
- Check whether the Mini Smart Plug is powered on or not.
 - Check whether your mobile device is connected to 2.4GHz Wi-Fi network.
 - Check your network connectivity. Make sure the router is working properly:
 - If the router is dual-band router, select 2.4G network and then add Mini Smart Plug.
 - Enable the router's broadcasting function.
 - Configure the encryption method as WPA2-PSK and authorization type as AES, or set both as auto.
 - Wireless mode cannot be 11n only.

13

- Check for Wi-Fi interference or relocate the Mini Smart Plug to another location within the signal range.
- Check whether the router's connected devices reach the amount limit. Please try to turn off some devices' Wi-Fi function and configure Mini Smart Plug again.
- Check if router's wireless MAC filtering function is enabled. Remove the device from filter list and make sure the router is not prohibiting Mini Smart Plug from connection.

- Make sure the password of your Wi-Fi network entered in App is correct when adding Mini Smart Plug.
- Make sure the Mini Smart Plug is in ready for App-Config: the indicator light is quick blinking blue (twice per second) for quick mode configuration, slow blinking blue (once every 3 seconds) for AP mode configuration.
- Repeat the App-Config process.
- Factory reset the Mini Smart Plug and try to add it again.

4. Can I control device through 2G/3G/4G cellular network?

The Mini Smart Plug and the mobile device are required to be under same Wi-Fi network when adding the Mini Smart Plug for the first time. After successful device configuration, you can remotely control the device through 2G/3G/4G cellular network.

14

5. How can I share my device with family?

Open App, go to "Profile" -> "Device Sharing" -> "Sent", tap "Add Sharing", now you can share the device with added family members.

6. How to reset this device?

Factory reset: After Mini Smart Plug is plugged into a power socket, press and hold (for 6 seconds) the power button for factory reset until the indicator light blinks blue rapidly. Indicator Lighting pattern:

- Quick blinking blue (twice per second): Quick mode configuration is initiated.
- Slow blinking blue (once every 3 seconds): AP mode configuration is initiated.
- Solid blue: The Mini Smart Plug is connected to the Wi-Fi network.
- Solid red: Power socket of the Mini Smart Plug is switched on. The indicator light could turn to solid red from any other status (quick/slow blinking blue, solid blue or off) by pressing the power button once and return to the previous status from solid red status (power socket is switched off) by pressing power button once again.
- Off: The Mini Smart Plug is switched off and no Wi-Fi network.

15

FCC Statement

This equipment has been tested and found to comply with the limits for a Class B digital device, pursuant to part 15 of the FCC rules. These limits are designed to provide reasonable protection against harmful interference in a residential installation. This equipment generates, uses and can radiate radio frequency energy and, if not installed and used in accordance with the instructions, may cause harmful interference to radio communications. However, there is no guarantee that interference will not occur in a particular installation. If this equipment does cause harmful interference to radio or television reception, which can be determined by turning the equipment off and on, the user is encouraged to try to correct the interference by one or more of the following measures:

- Reorient or relocate the receiving antenna.

- Increase the separation between the equipment and receiver.

- Connect the equipment into an outlet on a circuit different from that to which the receiver is connected.

- Consult the dealer or an experienced radio/TV technician for help.

To assure continued compliance, any changes or modifications not expressly approved by the party.

Responsible for compliance could void the user's authority to operate this equipment. (Example- use only shielded interface cables when connecting to computer or peripheral devices).

This equipment complies with Part 15 of the FCC Rules. Operation is subject to the following two conditions:

- (1) This device may not cause harmful interference, and

- (2) This device must accept any interference received, including interference that may cause undesired operation.

FCC Radiation Exposure Statement:

Any Changes or modifications not expressly approved by the party responsible for compliance could void the user's authority to operate the equipment.

The equipment complies with FCC Radiation exposure limits set forth for uncontrolled environment. This equipment should be installed and operated with minimum distance 20cm between the radiator and your body.