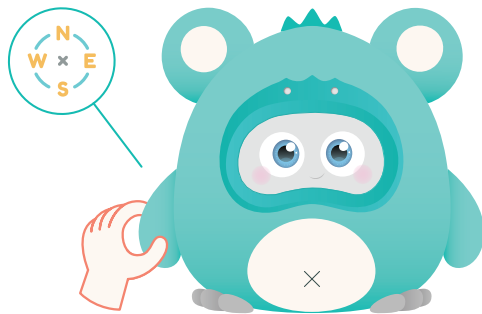
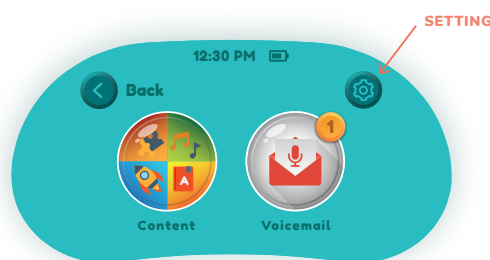


HOW TO USE THE MENU BUTTON

- 1 Find the menu button located on Woobo's right hand, hold for 2 seconds to open main menu on screen.

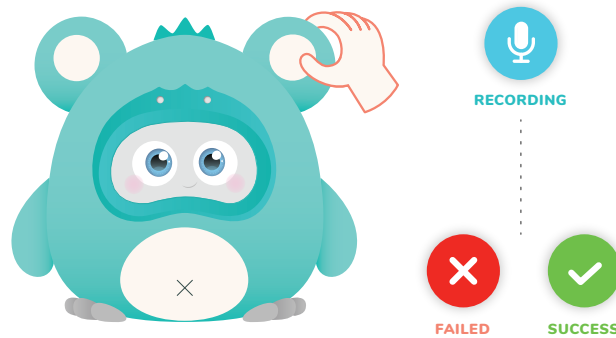


- 2 In the user menu, you can do one of the four things: go back, view content, access voicemail, or go to settings.



HOW TO TALK TO WOOBO

- 1 Click either one of Woobo's ears once.



- 2 Wait until you hear the “beep” sound, the blue light will turn on to show that Woobo is listening and the microphone icon will appear on screen.
- 3 Start talking! Woobo can detect when you finish talking, and process messages automatically. Green light will turn on to show that Woobo successfully recorded your speech.

NOTE: Woobo can listen to voice command from up to 2 feet (61cm) distance.

WARNING: if you have epilepsy or have seizures or other unusual reactions to flashing lights or patterns, please be careful and consult a doctor.

HOW TO USE POWER BUTTON

- 1 To turn Woobo on when Woobo's screen is off, find the power button located on Woobo's left hand, hold for 2 seconds to turn on.



- 2 To turn Woobo off when Woobo's screen is on, please hold the power button for 2 seconds, then click “turn off” on screen.
- 3 To put Woobo to sleep when Woobo's screen is on, please hold the power button for 2 seconds, then click “sleep” on screen. You can wake Woobo up again by clicking Woobo's ear or power button.
- 4 To force shutdown, please hold the power button for 8 seconds.

IF WOOBO STOPS WORKING



- * If woobo becomes unresponsive or does not perform as expected, make sure woobo is fully charged, and follow the following steps to restart woobo.

- 1 Force shutdown by holding the power button for 8 seconds until the screen turns dark.
- 2 Turn on Woobo again by holding the power button for 3 seconds.
- 3 If Woobo still doesn't perform properly, you can restore to factory settings. Visit <http://www.woobo.io/faq/> for a tutorial video on how to do so. You will need to set up Woobo again by following the directions in “Multiple Woobos” on the backside of this manual and pair with your registered parent app.
- 4 If Woobo is still not working, please reach customer service at: contact@woobo.io

WARRANTY: your purchase comes with a one-year limited warranty in the US. The warranty covers against manufacturing defects. It does not cover abuse, alteration, theft, loss, unauthorized and/or unreasonable use, or normal “wear and tear.” During the warranty period, Woobo will make sole determination of a defect. If Woobo determines a defect, Woobo, at its sole discretion, will repair or replace the defective part or product with a comparable part. This does not affect your statutory rights. For full details, safety updates, or support, send us an email at contact@woobo.io.

CARE

- * Protect the environment by not disposing of this product with household waste (2012/19/EU). Check your local authority for recycling advice and facilities.
- * It's quite harmful for Woobos to get wet and they should avoid it to keep safe, conditions that are too hot (like a hot car), being hit, or dropped are also dangerous.
- * Woobo is built tough, though with no user serviceable parts, it is important to keep the sensors clean for optimal performance.
- * Lightly wipe Woobo's sensors (located on the face frame) with a lint-free cloth to remove any smudges or debris.

BATTERY SAFETY INFORMATION

In exceptional circumstances, batteries may leak fluids that can cause a chemical burn injury or ruin your product. to avoid battery leakage:

- * Rechargeable batteries are only to be charged under adult supervision.
- * The supply terminals are not to be short-circuited.
- * Dispose of batteries safely.
- * Do not dispose of this product in a fire. The batteries inside may explode or leak.
- * Do not recharge the toy if it feels hot. Allow it to cool before recharging.
- * Woobo is only to be charged using the charger supplied. Do not charge the battery in any other battery charger.
- * Do not attempt to use or charge the Woobo if it shows signs of leakage or corrosion.
- * If Woobo or charger is wet, thoroughly dry before using or charging.

ADULTS NOTE: periodically examine this battery charger for damage to the cord. If the battery charger is damaged, do not use it.

ADDITIONAL INFORMATION

This device complies with part 15 of the FCC Rules. Operation is subject to the following two conditions: (1) This device may not cause harmful interference, and (2) this device must accept any interference received, including interference that may cause undesired operation.

NOTE: This equipment has been tested and found to comply with the limits for a Class B digital device, pursuant to part 15 of the FCC Rules. These limits are designed to provide reasonable protection against harmful interference in a residential installation. This equipment generates, uses and can radiate radio frequency energy and, if not installed and used in accordance with the instructions, may cause harmful interference to radio communications. However, there is no guarantee that interference will not occur in a particular installation. If this equipment does cause harmful interference to radio or television reception, which can be determined by turning the equipment off and on, the user is encouraged to try to correct the interference by one or more of the following measures:

- * Reorient or relocate the receiving antenna.
- * Increase the separation between the equipment and receiver.
- * Connect the equipment into an outlet on a circuit different from that to which the receiver is connected.
- * Consult the dealer or an experienced radio/TV technician for help.

CAUTION: any changes or modifications to this device not explicitly approved by manufacturer could void your authority to operate this equipment

RADIATION EXPOSURE STATEMENT

This equipment complies with FCC radiation exposure limits 1.6W/Kg set forth for an uncontrolled environment and it also complies with Part 15 of FCC RF Rules

YOUR CHILD'S PRIVACY

- * Woobo is not always listening. You have to click on either of Woobo's ear to talk and activate speech recognition.
- * Parental consent is required to set up a parent account and connect with Woobo.
- * When the microphone is active, voice data is collected so Woobo can understand and respond to you in conversation. These recordings are only used in accordance with Woobo's Privacy Policy.
- * All recorded conversations can be deleted upon parents' request. There is no advertising content within Woobo.
- * Your children's conversations are not used to advertise to your child.



USER MANUAL



<http://www.woobo.io/faq/>

Woobo Inc.
198 River St.
Cambridge, MA 02139
United States

contact@woobo.io



Woobo and Woobo logo are trademarks of Woobo. Apple, the Apple logo, iPhone, iPad, and iPod are trademarks of Apple Inc., registered in the U.S. and other countries. App Store is a service mark of Apple Inc. Google Play and Android are trademarks of Google Inc.



READ BEFORE USE



Read this manual carefully for important safety information and instructions for use before operating this toy.



Includes **1** non-replaceable 3.7 V rechargeable (LiPo) battery. Battery Capacity: 6000mAh.



Requires **1** USB power brick (included) and **1** charger cord (included) to charge the battery. Charging should only be done by an adult. The charger cord is not a toy.



Wi-Fi is **required** to play this toy.

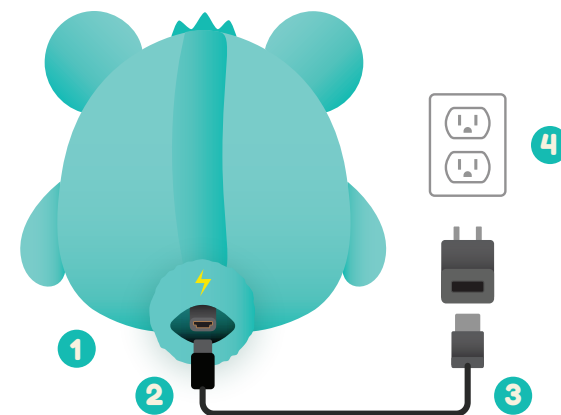


Frequency: 2.4 Ghz



The parent app works with Apple and Android smart devices. To download, please search **Woobo Parent App** in the App Store and Google Play.

CHARGING



* You may start playing with woobo right out of the package. For best performance, fully charge the battery before you play!

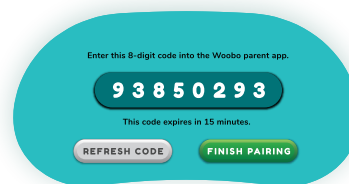
- 1 Open the velcro at end of Woobo's tail to find charging port.
- 2 Plug the micro USB into the charging port.
- 3 Plug the flat end of the charger cord into the USB brick.
- 4 Plug the USB brick into a standard wall outlet. For a fully charged battery, it may take up to 6 hours.

FIRST TIME SETUP



* You will need woobo and your phone.

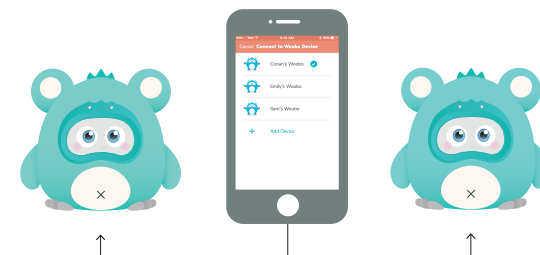
- 1 Find the power button on Woobo's right hand, and hold for 3 seconds to turn on.
- 2 Follow the instructions and proceed to get verification code.



- 3 Download Woobo Parent App on mobile.
- 4 Create an account on the app, activate the account through email, and then enter the verification code displayed on the toy.
- 5 Follow the steps to finish set up on both the toy and app.

NOTE: if you want to pair Woobo to a new account after you finish pairing, go to the menu and click the setting option on the toy, and select "pair with new account".

MULTIPLE WOOBOS



* You can use one account to pair with multiple woobos.

- 1 Register an account and finish set up on your first Woobo.
- 2 Turn on your second Woobo, and proceed to get verification code.
- 3 Open your Woobo Parent App, make sure you are logged into the account you have already registered.
- 4 In the hamburger menu, select "change device" and then "manage device", then click the "+" sign to add a new device.
- 5 Follow the instruction to complete pairing.
- 6 Continue to finish set up on both the toy and app.

* Now you can switch between woobos by clicking the character on hamburger menu.