

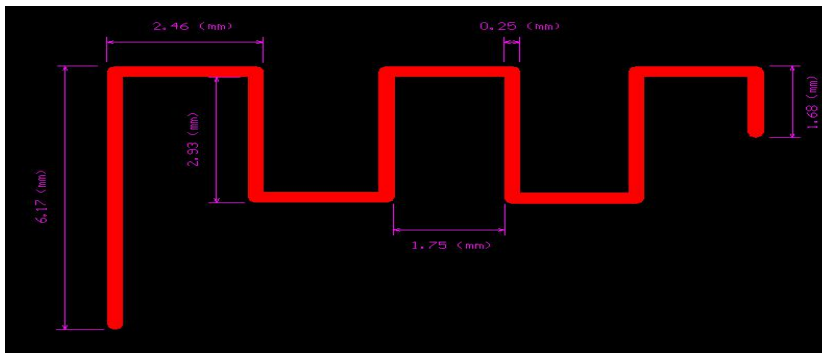
# Antenna specification

Manufacturer : Shenzhen Neewer Technology Co., Ltd

Antenna frequency range : 2400-2500MHz

Antenna Gain : 4.08(Max)

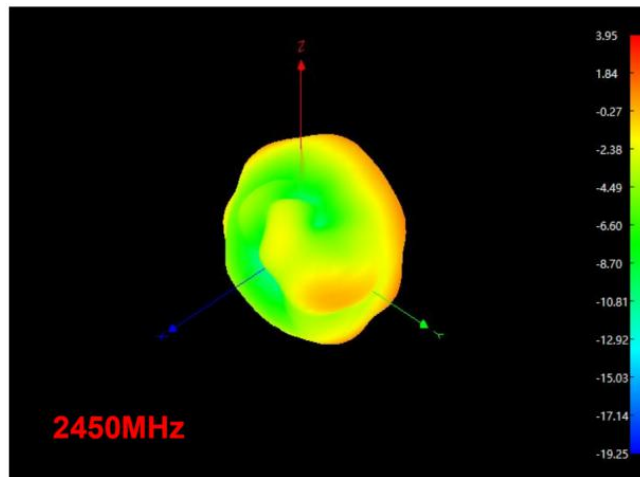
## 1. Antenna Layout&moudule on the system board:



## 2. Efficiency&Gain&PatternRipple :

Frequency (MHz)	Efficiency / dB	Efficiency / (%)	Peak Gain (dBi)	PatternRipple
2400	-2.10	61.67	3.42	21.34
2410	-1.98	63.39	3.57	20.54
2420	-2.01	62.98	3.64	20.19
2430	-2.04	62.57	3.96	20.33
2440	-2.09	61.75	4.07	20.99
2450	-2.11	61.49	3.95	21.82
2460	-2.01	62.98	3.99	22.81
2470	-2.15	60.94	4.08 (MAX)	24.14
2480	-2.15	60.94	4.02	25.54
2490	-2.19	60.43	3.99	25.73
2500	-2.16	60.84	3.99	24.59

### 3. 3D Radiation Pattern



### 4. 2D Radiation Pattern

