

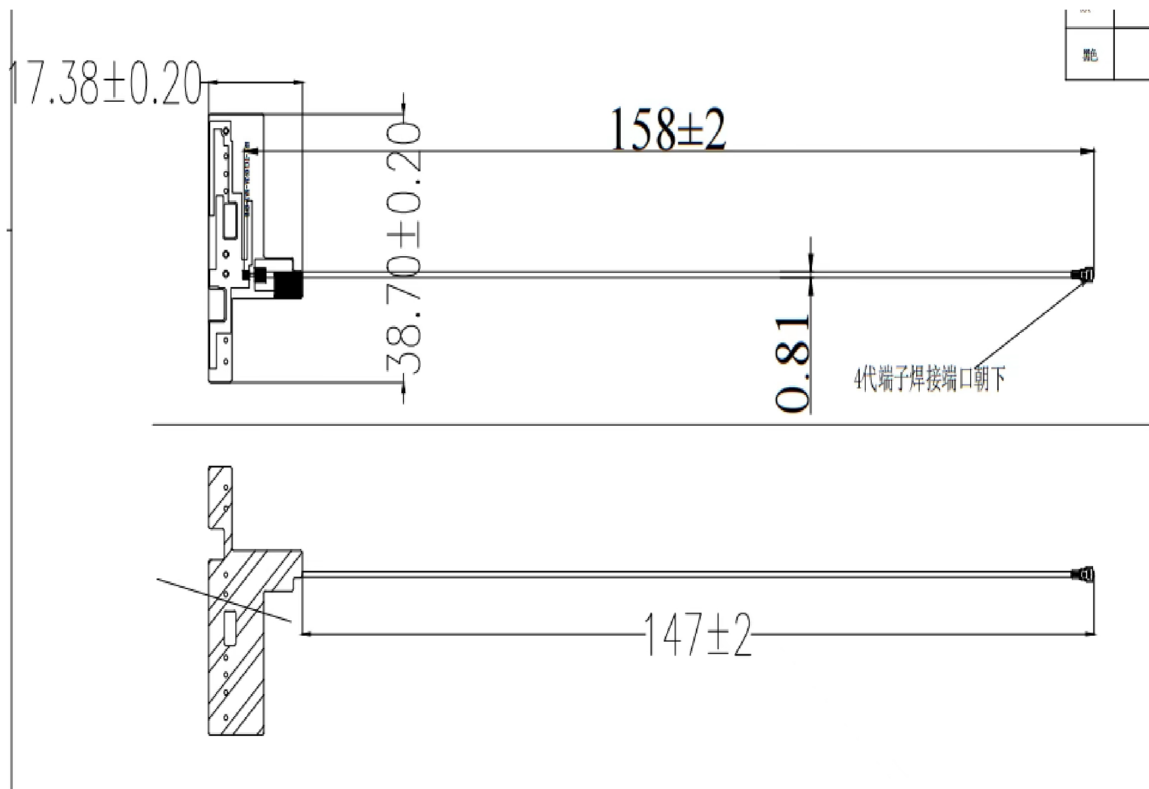
Antenna Test Report

Test Lab: Shenzhen Kuruijie Communication Technologies Co., Ltd

manufacturer: Shenzhen Kuruijie Communication Technologies Co., Ltd

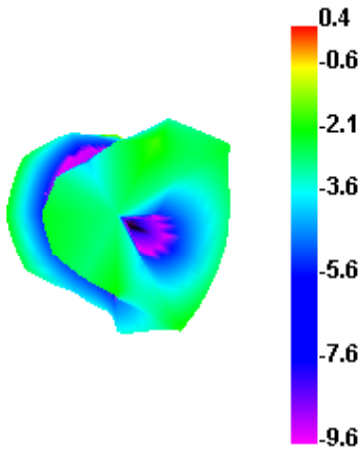
Project: TC1093A The beautiful version

Antenna Model: JRJ-TC1093A-MAX-CWB

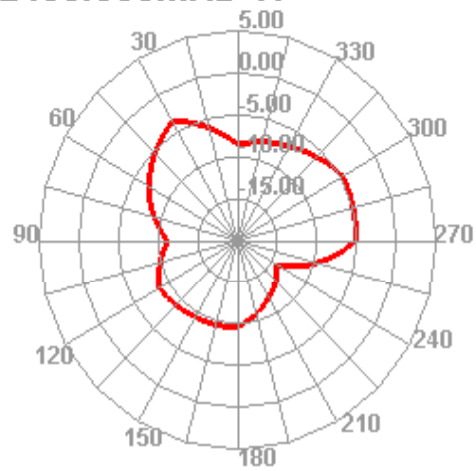


Passive Test For BT&WIFI 2.4G							
Freq (MHz)	Effi (%)	Effi (dB)	Gain (dBi)	Gain (dBd)	Max (dB)	Min (dB)	Directivity (dBi)
2400	29.89	-5.24	0.38	-1.77	0.38	-14.25	5.24
2410	27.29	-5.64	0.06	-2.09	0.06	-14.85	5.64
2420	24.88	-6.04	-0.33	-2.48	-0.33	-15.82	6.04
2430	27.11	-5.67	0.03	-2.12	0.03	-15.41	5.67
2440	25.63	-5.91	-0.29	-2.44	-0.29	-15.45	5.91
2450	28.58	-5.44	0.12	-2.03	0.12	-14.53	5.44
2460	27.04	-5.68	-0.07	-2.22	-0.07	-15.84	5.68
2470	26.93	-5.7	-0.08	-2.23	-0.08	-15.6	5.7
2480	28.98	-5.38	0.2	-1.95	0.2	-15.69	5.38
2490	27.57	-5.6	-0.07	-2.22	-0.07	-15.53	5.6
2500	26.5	-5.77	-0.19	-2.34	-0.19	-15.95	5.77

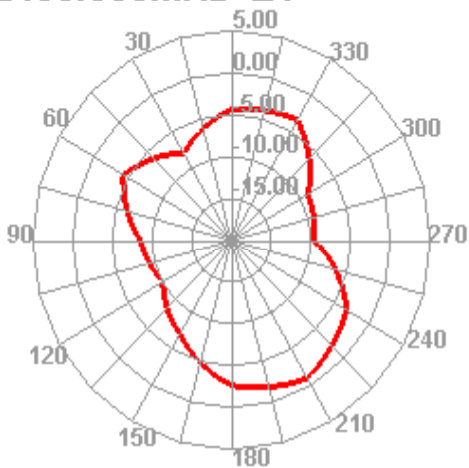
2400.000MHz



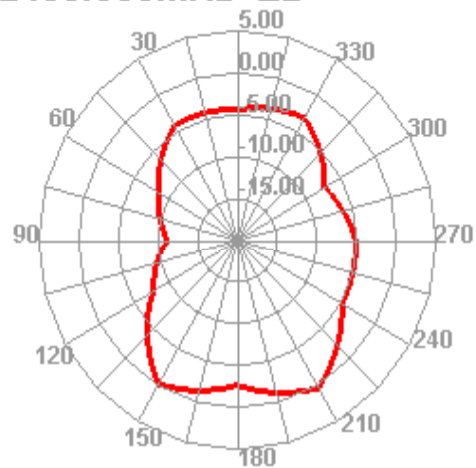
2400.000MHz H



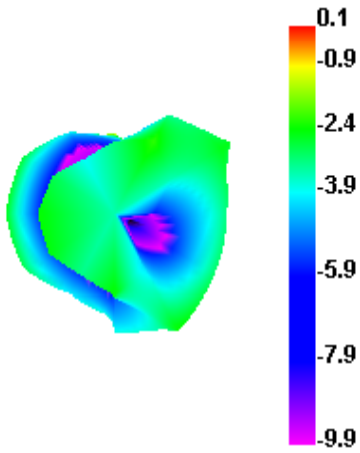
2400.000MHz E1



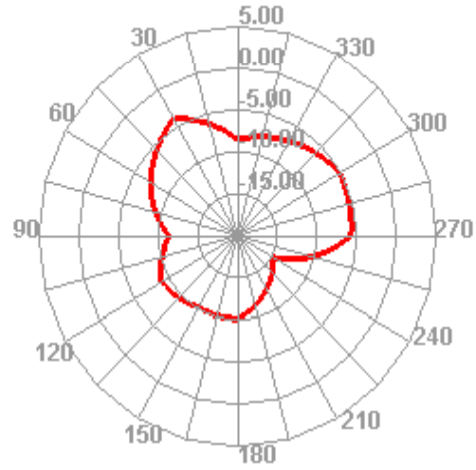
2400.000MHz E2



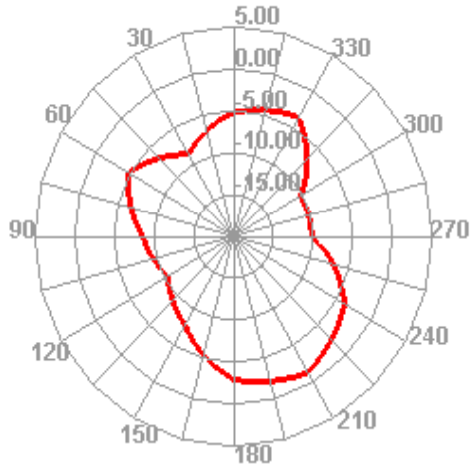
2410.000MHz



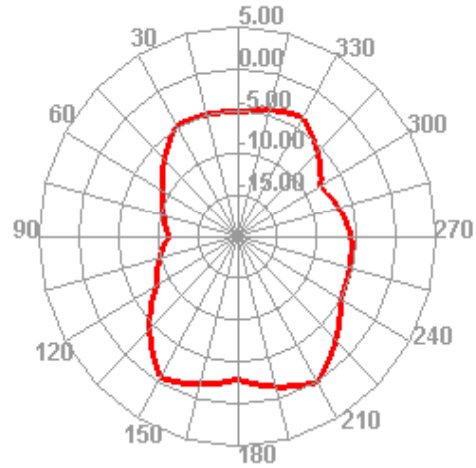
2410.000MHz H



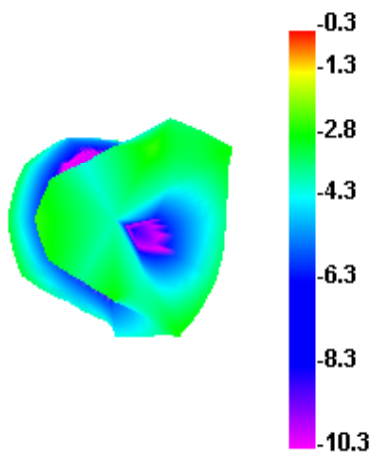
2410.000MHz E1



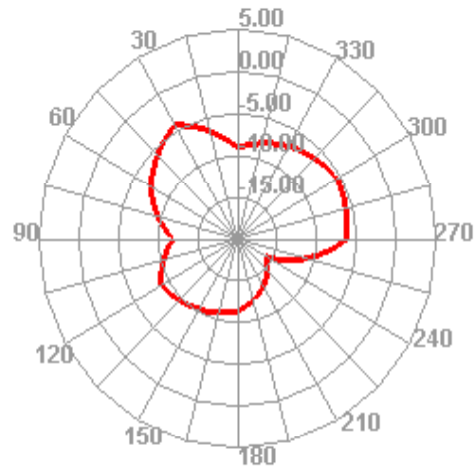
2410.000MHz E2



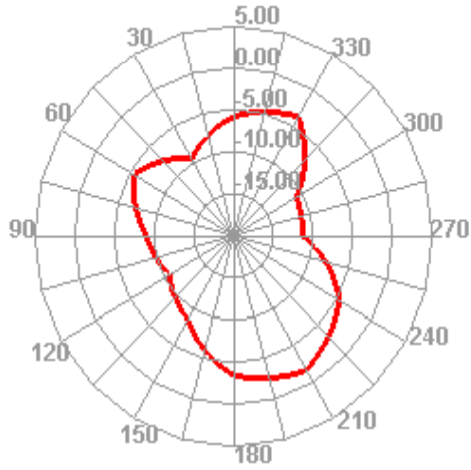
2420.000MHz



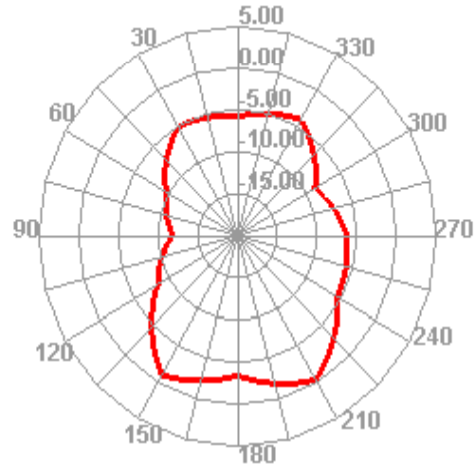
2420.000MHz H



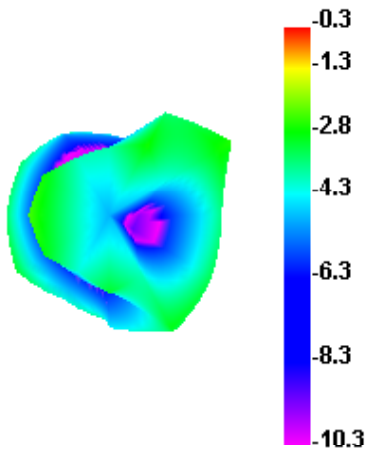
2420.000MHz E1



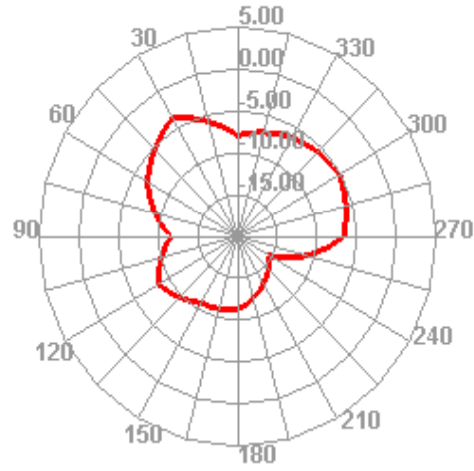
2420.000MHz E2



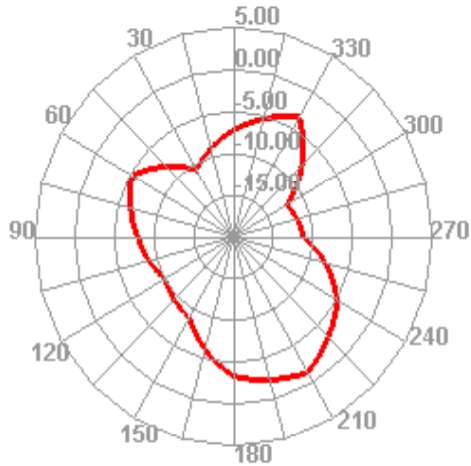
2440.000MHz



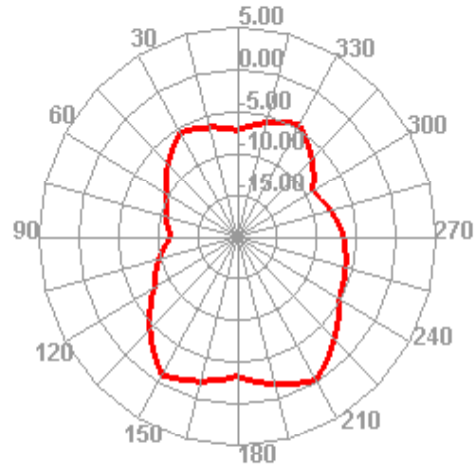
2440.000MHz H



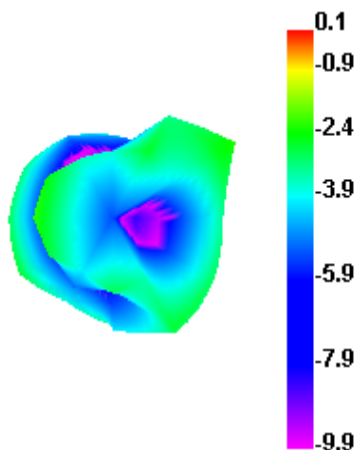
2440.000MHz E1



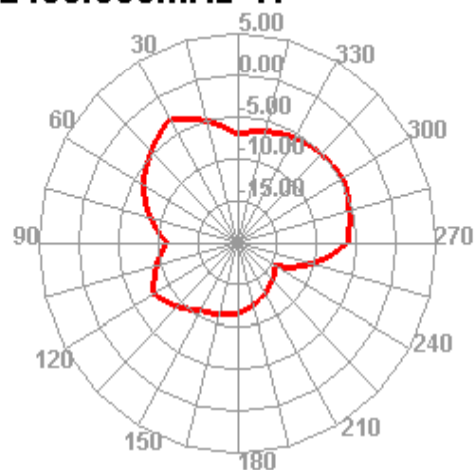
2440.000MHz E2



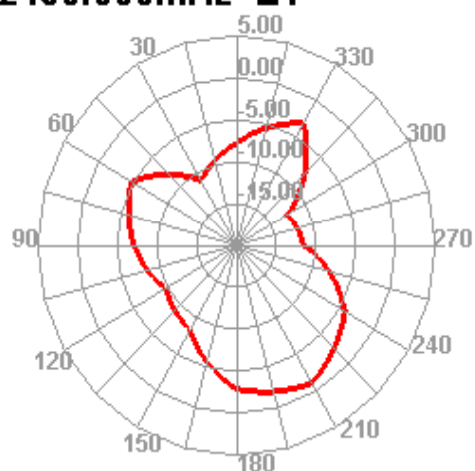
2450.000MHz



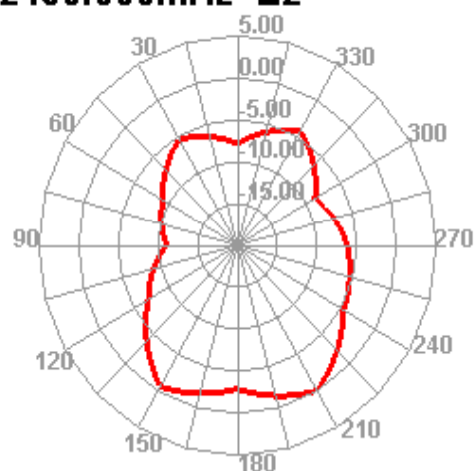
2450.000MHz H



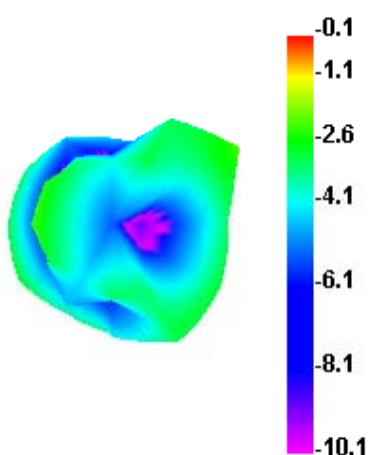
2450.000MHz E1



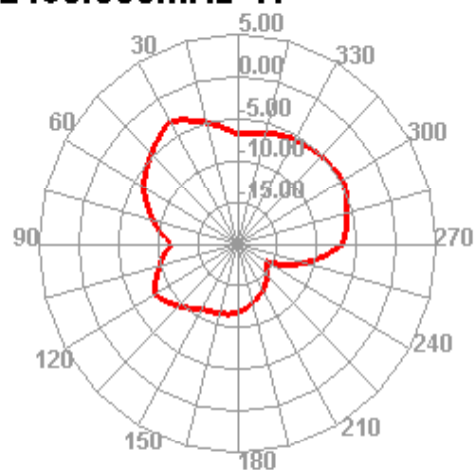
2450.000MHz E2



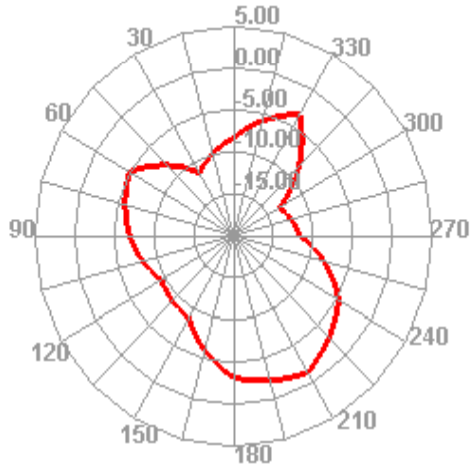
2460.000MHz



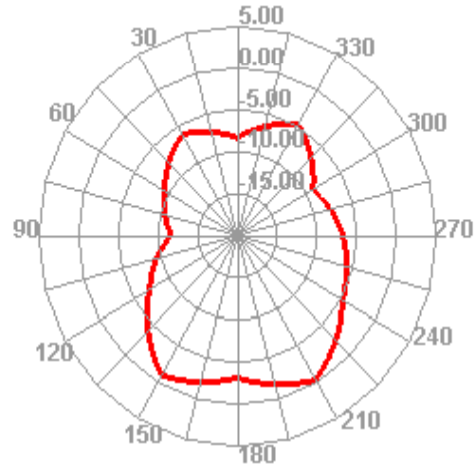
2460.000MHz H



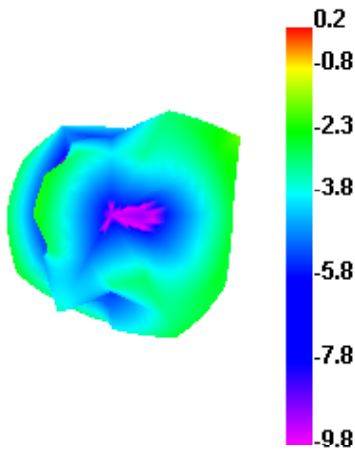
2460.000MHz E1



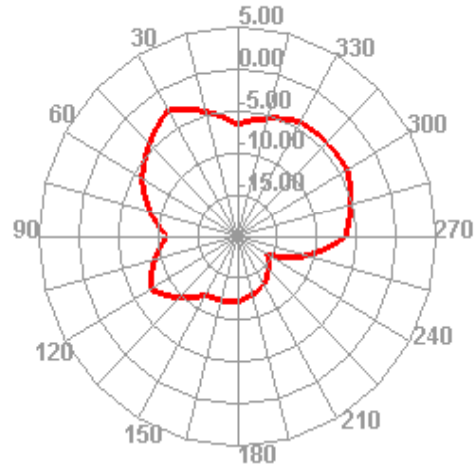
2460.000MHz E2



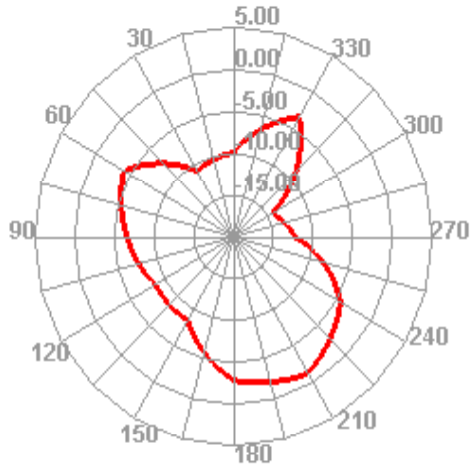
2480.000MHz



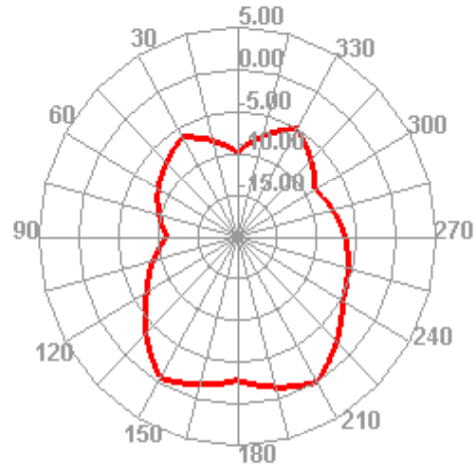
2480.000MHz H



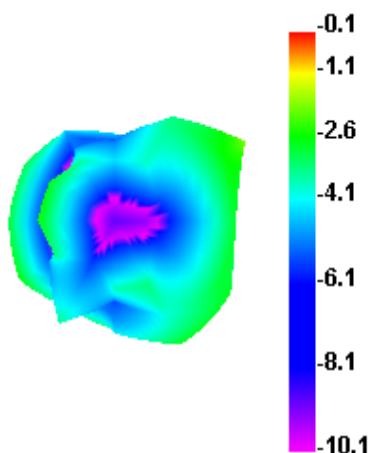
2480.000MHz E1



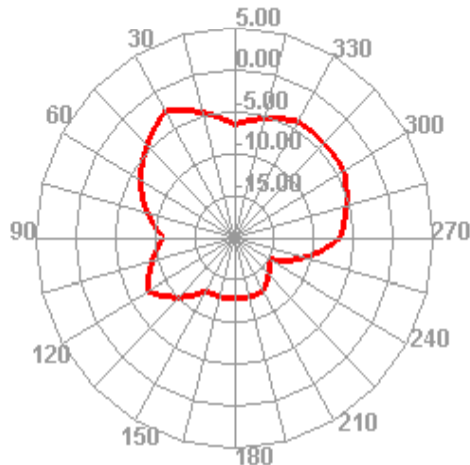
2480.000MHz E2



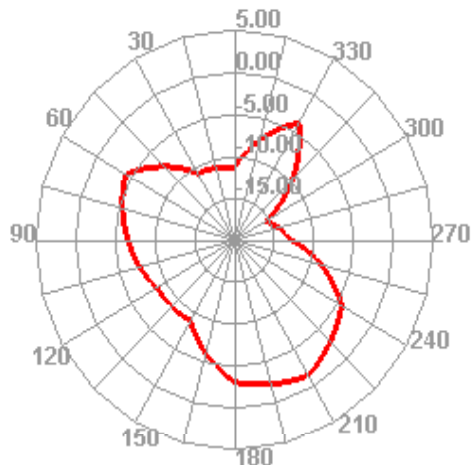
2490.000MHz



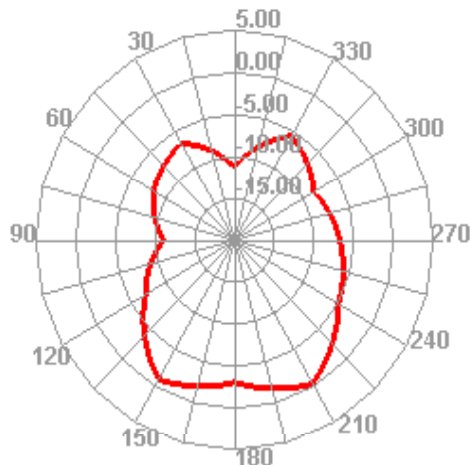
2490.000MHz H



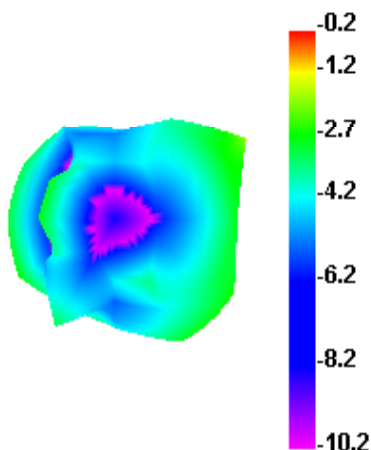
2490.000MHz E1



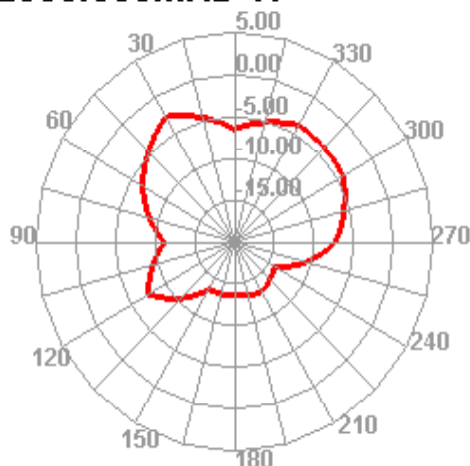
2490.000MHz E2



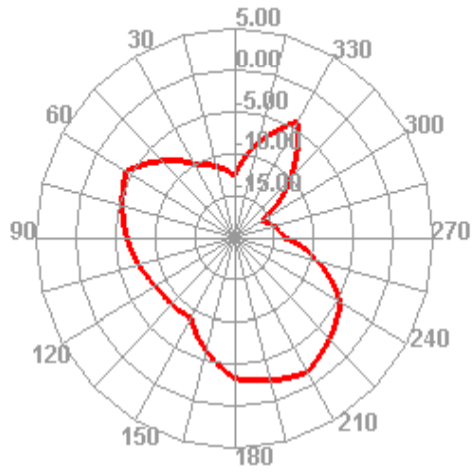
2500.000MHz



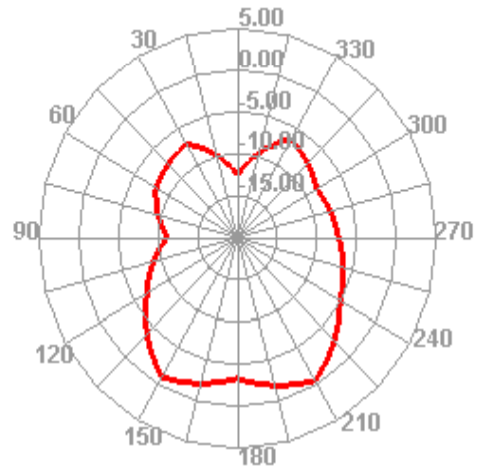
2500.000MHz H



2500.000MHz E1

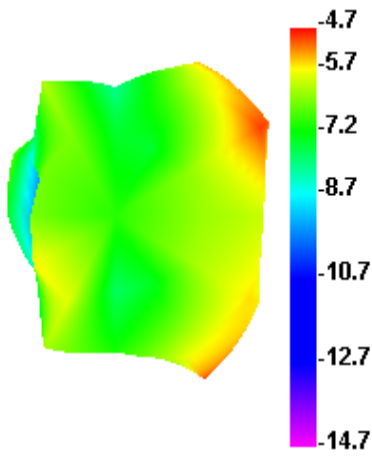


2500.000MHz E2

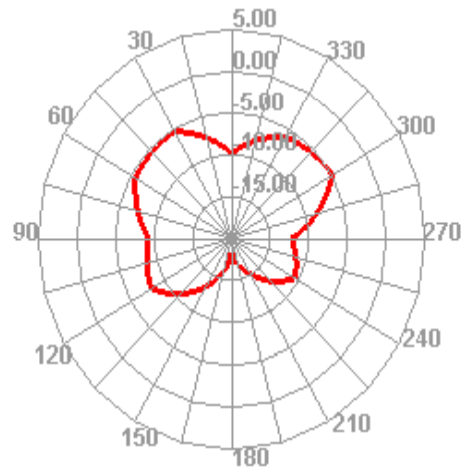


Passive Test For 1400-1690							
Freq (MHz)	Effi (%)	Effi (dB)	Gain (dBi)	Gain (dBd)	Max (dB)	Min (dB)	Directivity (dBi)
1500	25.49	-6.1	-4.74	-6.89	-4.74	-18.34	8.1
1510	24.94	-6.26	-5.06	-7.21	-5.06	-17.43	8.26
1520	23.12	-6.82	-5.71	-7.86	-5.71	-17.39	8.82
1530	25.1	-6.21	-5.21	-7.36	-5.21	-17.13	8.21
1540	23.32	-6.75	-5.83	-7.98	-5.83	-17.14	8.75
1550	23.67	-6.64	-5.72	-7.87	-5.72	-17.08	8.64
1560	25.36	-6.13	-5.3	-7.45	-5.3	-17.65	8.13
1570	24.19	-6.48	-5.53	-7.68	-5.53	-18.2	8.48
1580	26.37	-6.86	-4.96	-7.11	-4.96	-18.01	7.86
1590	26.35	-6.87	-5.01	-7.16	-5.01	-18.62	7.87
1600	24.44	-6.41	-5.53	-7.68	-5.53	-18.97	8.41

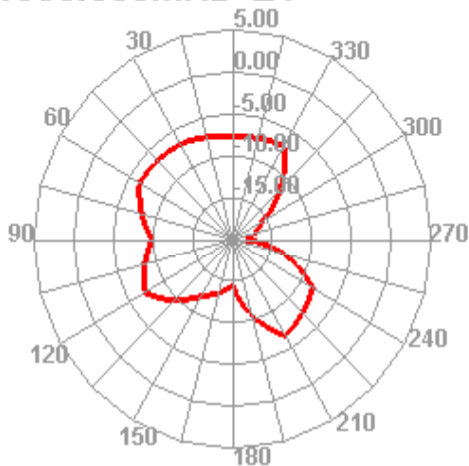
1500.000MHz



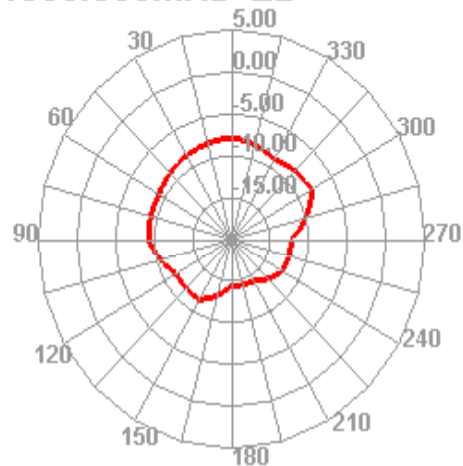
1500.000MHz H



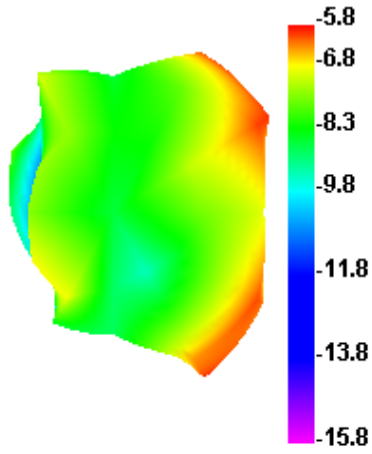
1500.000MHz E1



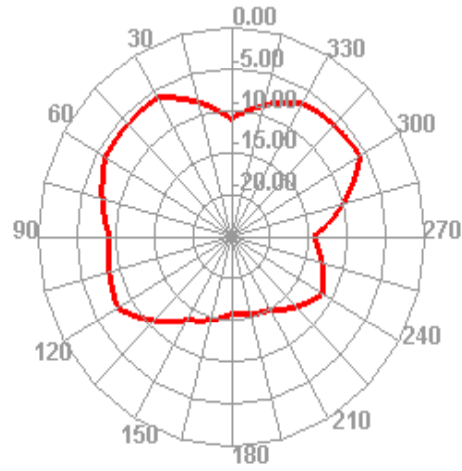
1500.000MHz E2



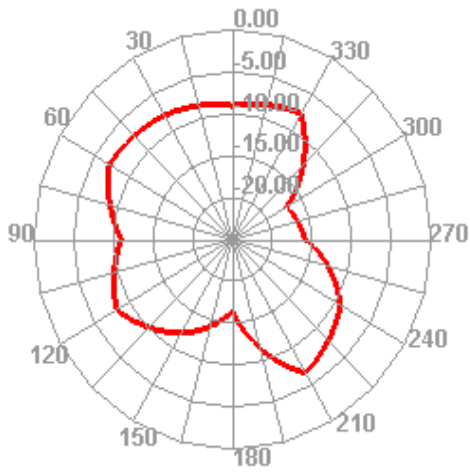
1540.000MHz



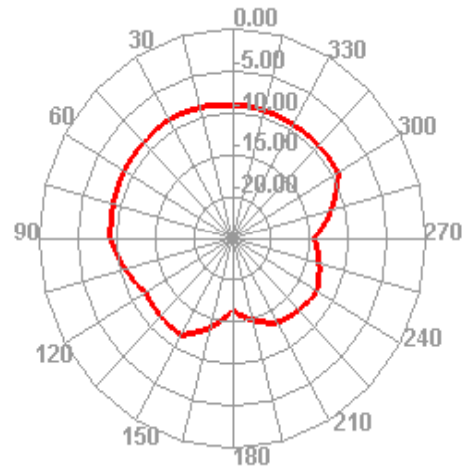
1540.000MHz H



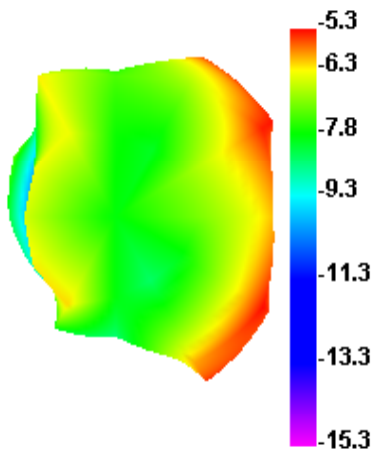
1540.000MHz E1



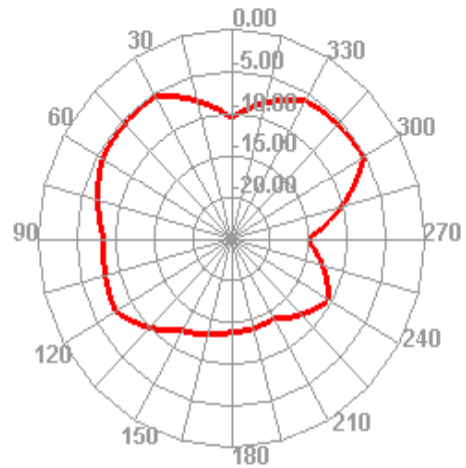
1540.000MHz E2



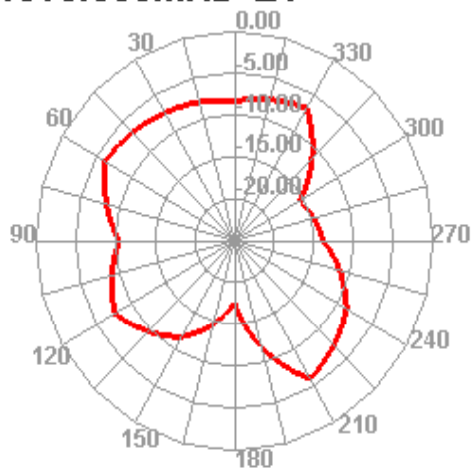
1560.000MHz



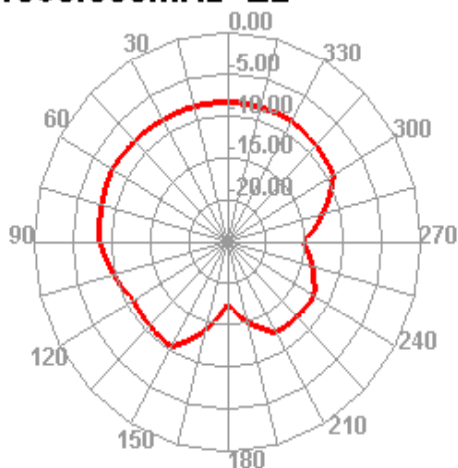
1560.000MHz H



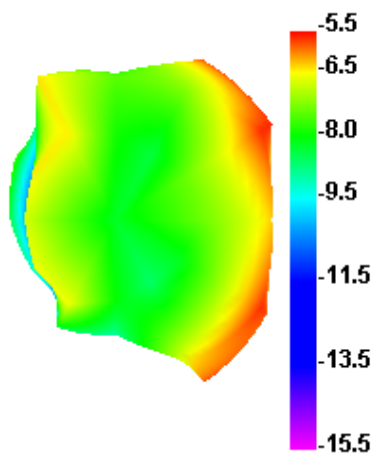
1560.000MHz E1



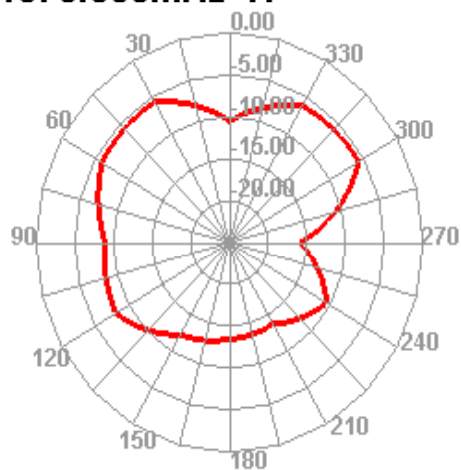
1560.000MHz E2



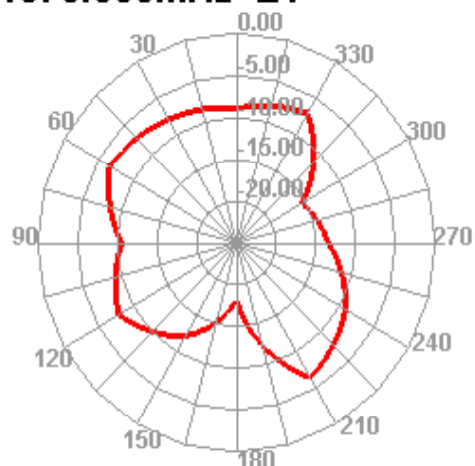
1570.000MHz



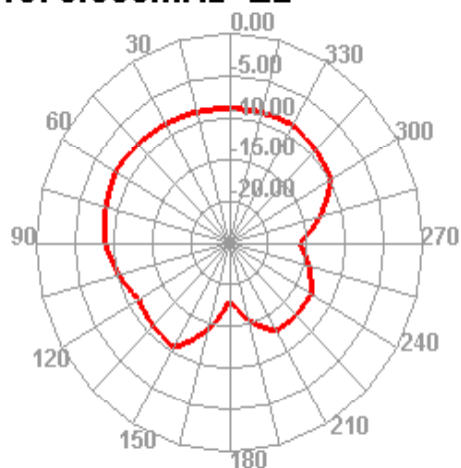
1570.000MHz H



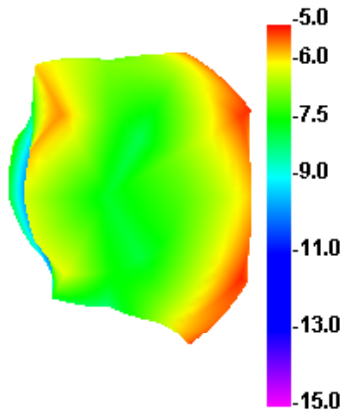
1570.000MHz E1



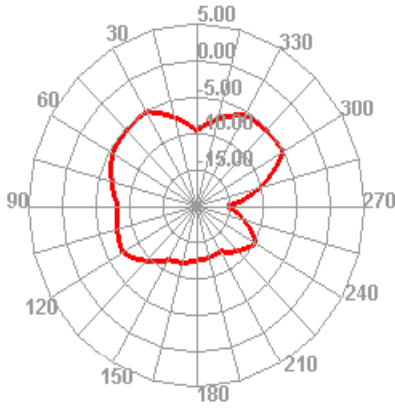
1570.000MHz E2



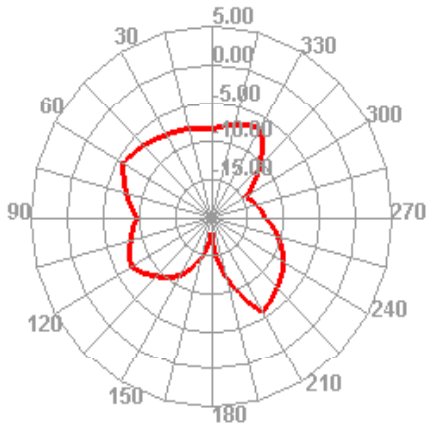
1580.000MHz



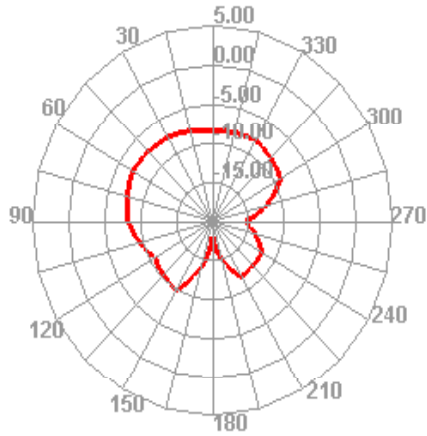
1580.000MHz H



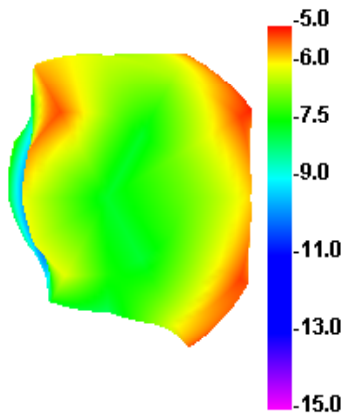
1580.000MHz E1



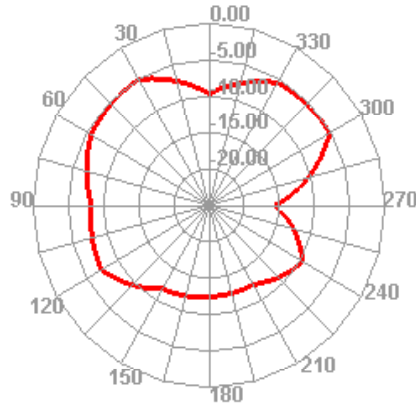
1580.000MHz E2



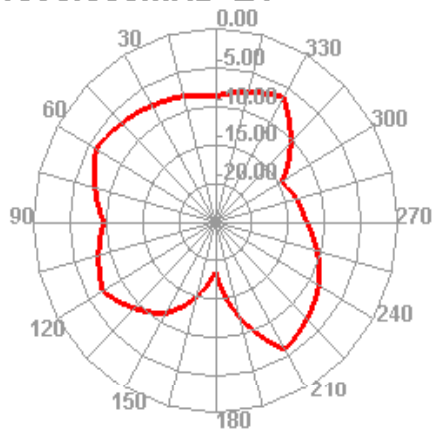
1590.000MHz



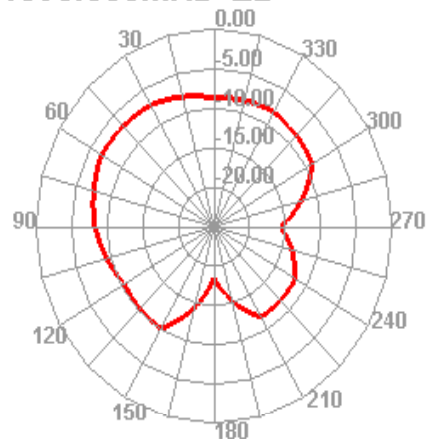
1590.000MHz H



1590.000MHz E1

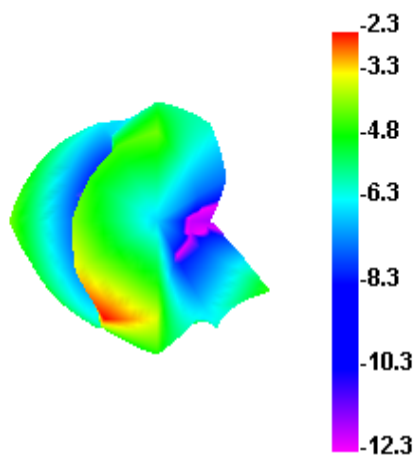


1590.000MHz E2

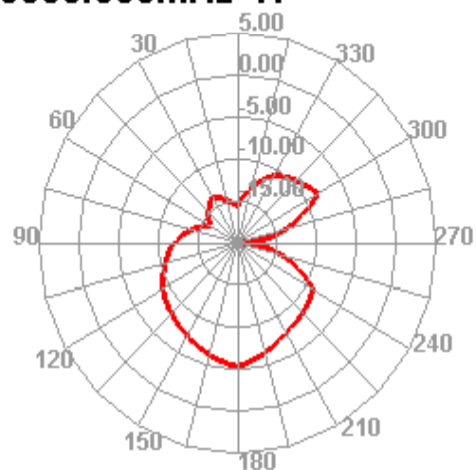


Passive Test For 5G							
Freq (MHz)	Effi (%)	Effi (dB)	Gain (dBi)	Gain (dBd)	Max (dB)	Min (dB)	Directivity (dBi)
5000	24.8	-8.3	-2.33	-4.48	-2.33	-19.22	8.3
5020	25.66	-8.05	-2.39	-4.54	-2.39	-20.46	8.05
5040	24.29	-8.45	-3	-5.15	-3	-18.86	8.45
5060	26.6	-7.8	-2.29	-4.44	-2.29	-16.85	7.8
5080	27.25	-7.63	-2.21	-4.36	-2.21	-16.1	7.63
5100	26.48	-7.83	-2.46	-4.61	-2.46	-16.01	7.83
5120	27	-7.69	-2.4	-4.55	-2.4	-16.57	7.69
5140	25.33	-8.15	-2.97	-5.12	-2.97	-16.37	8.15
5160	27.87	-7.48	-2.37	-4.52	-2.37	-15.58	7.48
5180	25.75	-8.03	-3.01	-5.16	-3.01	-17.79	8.03
5200	26.29	-7.88	-2.81	-4.96	-2.81	-19.49	7.88
5220	25.67	-8.05	-2.7	-4.85	-2.7	-21.62	8.05
5240	26.44	-7.84	-2.2	-4.35	-2.2	-24.25	7.84
5260	26.19	-7.91	-2.3	-4.45	-2.3	-22.68	7.91
5280	27.02	-7.69	-1.93	-4.08	-1.93	-22.82	7.69
5300	25.49	-8.1	-2.49	-4.64	-2.49	-21.31	8.1
5320	29.92	-7.01	-1.69	-3.84	-1.69	-19.71	7.01
5340	26.61	-7.8	-2.63	-4.78	-2.63	-23.6	7.8
5360	28.83	-7.25	-2.19	-4.34	-2.19	-27.52	7.25
5380	29.02	-7.21	-2.12	-4.27	-2.12	-26.59	7.21
5400	28.45	-7.34	-2.53	-4.68	-2.53	-23.62	7.34
5420	27.89	-7.47	-2.62	-4.77	-2.62	-24.57	7.47
5440	20.43	-6.9	-2.25	-4.4	-2.25	-19.63	6.9
5460	19.94	-7	-2.35	-4.5	-2.35	-18.24	7
5480	20.98	-6.78	-2.16	-4.31	-2.16	-17.34	6.78
5500	22	-6.58	-2.03	-4.18	-2.03	-16.5	6.58
5520	21.92	-6.59	-1.83	-3.98	-1.83	-15.36	6.59
5540	22.35	-6.51	-1.67	-3.82	-1.67	-14.17	6.51
5560	21.91	-6.59	-1.95	-4.1	-1.95	-14.04	6.59
5580	22.71	-6.44	-1.87	-4.02	-1.87	-13.88	6.44
5600	22.3	-6.52	-1.97	-4.12	-1.97	-14.45	6.52
5620	23.14	-6.36	-1.68	-3.83	-1.68	-14	6.36
5640	20.65	-6.85	-2.22	-4.37	-2.22	-14.44	6.85
5660	23.04	-6.37	-1.61	-3.76	-1.61	-16.06	6.37
5680	22.52	-6.47	-1.72	-3.87	-1.72	-17.62	6.47
5700	26.52	-5.76	-0.87	-3.02	-0.87	-17.11	5.76
5720	23.18	-6.35	-1.22	-3.37	-1.22	-17.65	6.35
5740	25.66	-5.91	-0.78	-2.93	-0.78	-18.36	5.91
5760	23.98	-6.2	-0.68	-2.83	-0.68	-20.51	6.2
5780	26.27	-5.8	-0.27	-2.42	-0.27	-22.77	5.8
5800	22.97	-6.39	-0.62	-2.77	-0.62	-24.24	6.39
5820	25.58	-5.92	0.19	-1.96	0.19	-19.09	5.92
5840	23.71	-6.25	0.47	-1.68	0.47	-22.17	6.25
5860	25.41	-5.95	0.69	-1.46	0.69	-23.45	5.95
5880	21.85	-6.61	0.13	-2.02	0.13	-21.02	6.61
5900	21.81	-6.61	0.33	-1.82	0.33	-20.25	6.61
5920	18.07	-7.43	-0.41	-2.56	-0.41	-24.17	7.43
5940	21.67	-6.64	0.11	-2.04	0.11	-20.92	6.64
5960	27.01	-7.69	-1.1	-3.25	-1.1	-23.59	7.69
5980	25.77	-7.88	-1.88	-4.01	-1.88	-22.81	7.88

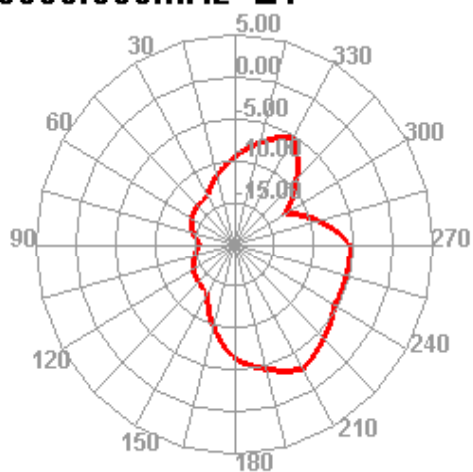
5000.000MHz



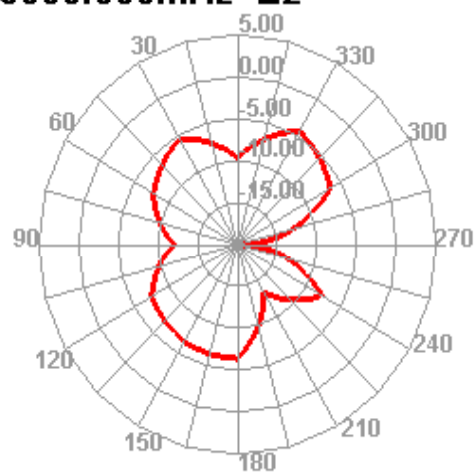
5000.000MHz H



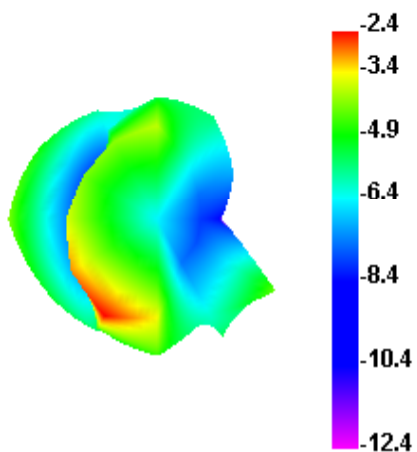
5000.000MHz E1



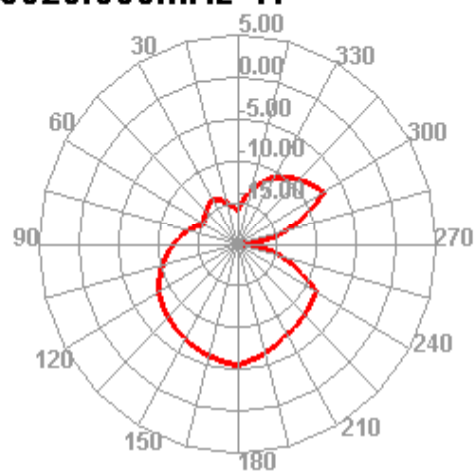
5000.000MHz E2



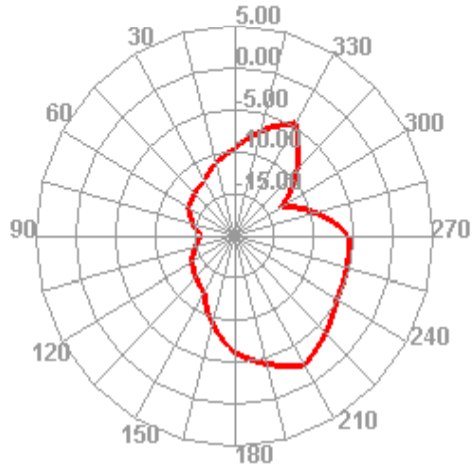
5020.000MHz



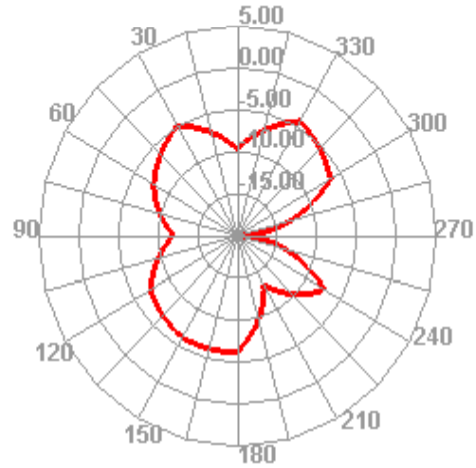
5020.000MHz H



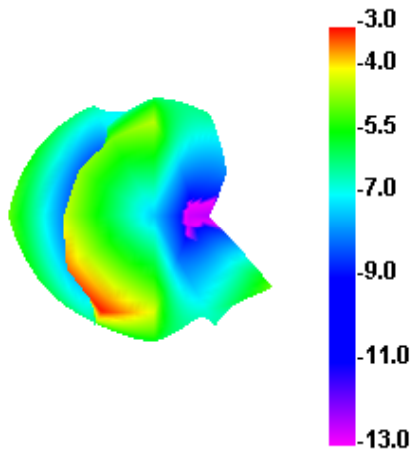
5020.000MHz E1



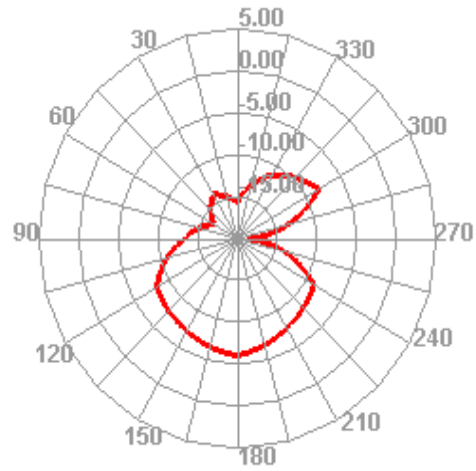
5020.000MHz E2



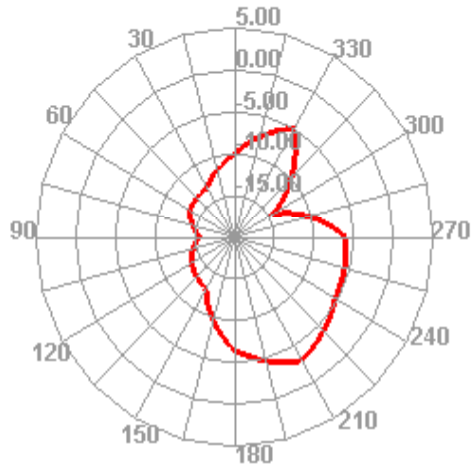
5040.000MHz



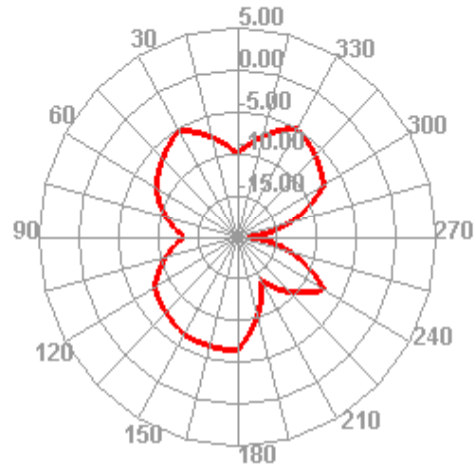
5040.000MHz H



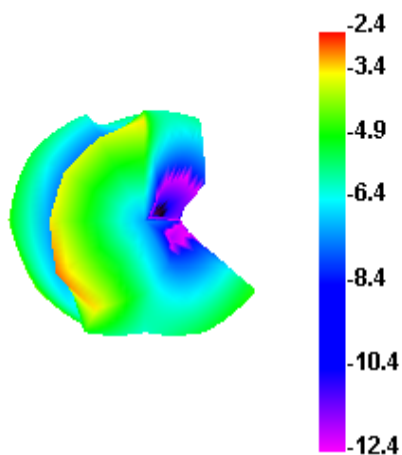
5040.000MHz E1



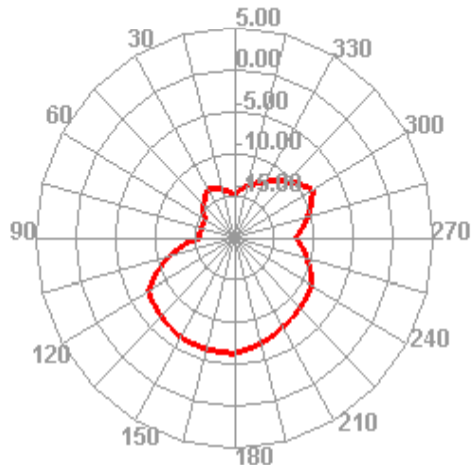
5040.000MHz E2



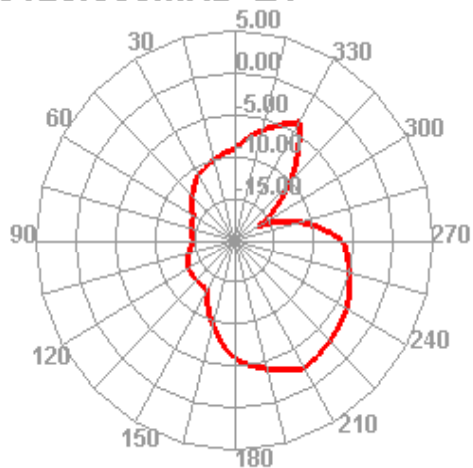
5120.000MHz



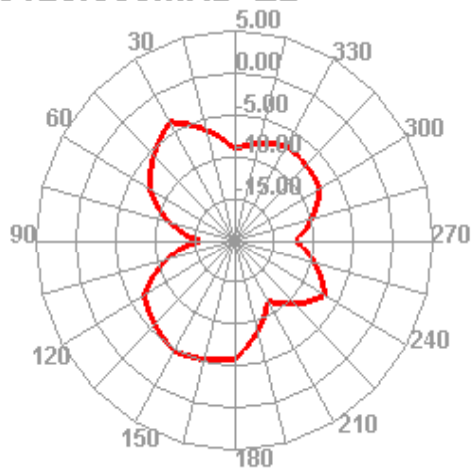
5120.000MHz H



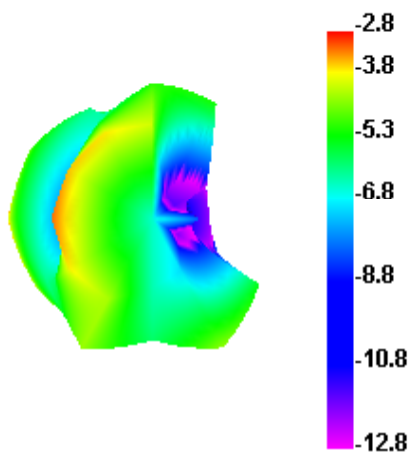
5120.000MHz E1



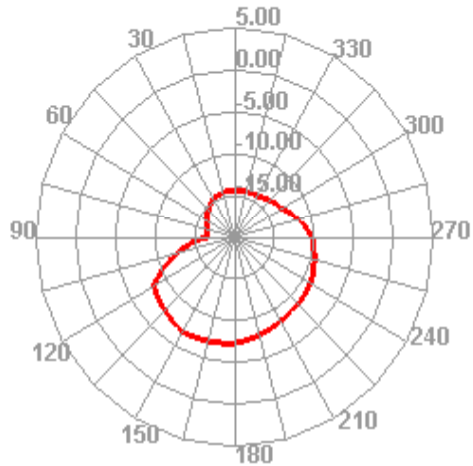
5120.000MHz E2



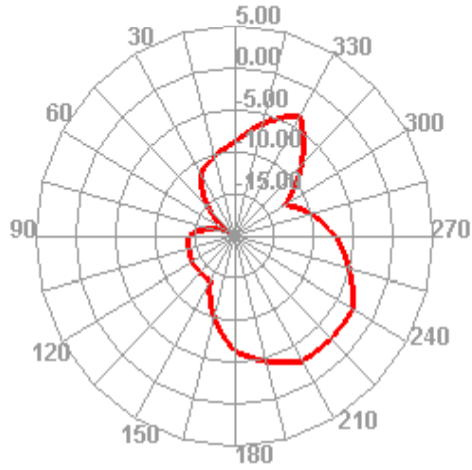
5200.000MHz



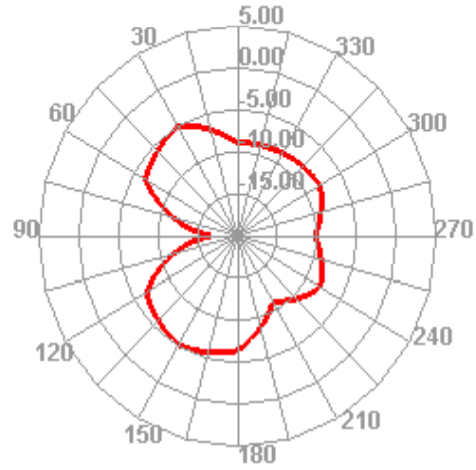
5200.000MHz H



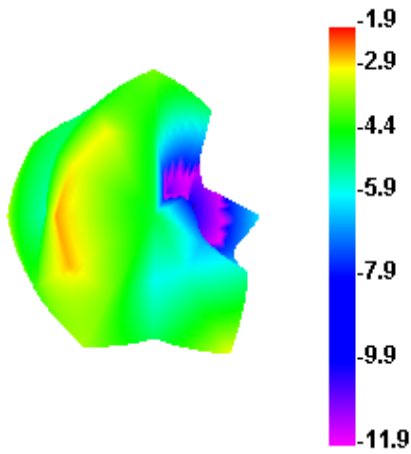
5200.000MHz E1



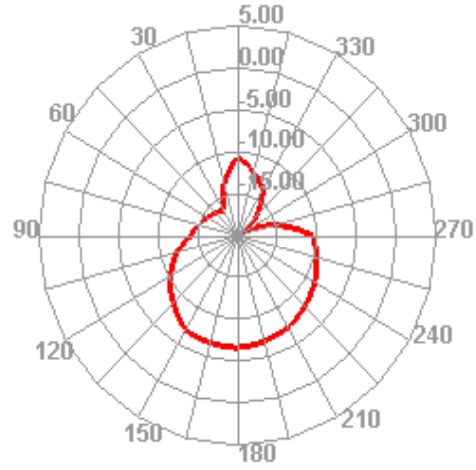
5200.000MHz E2



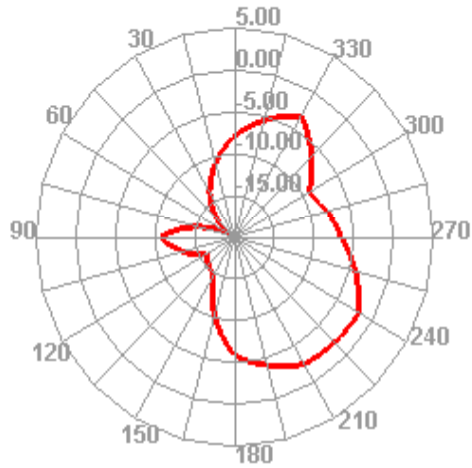
5280.000MHz



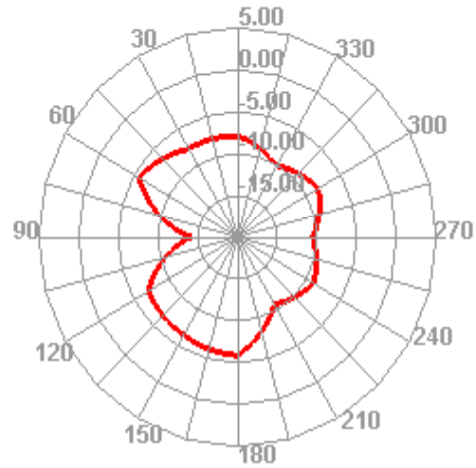
5280.000MHz H



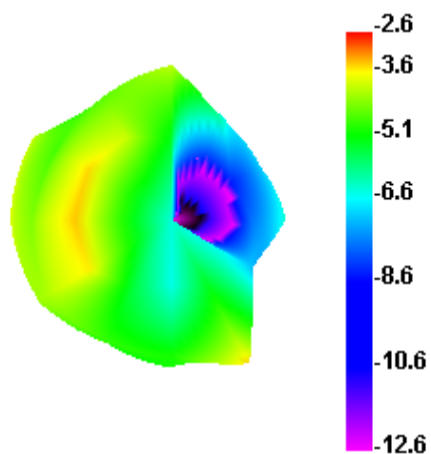
5280.000MHz E1



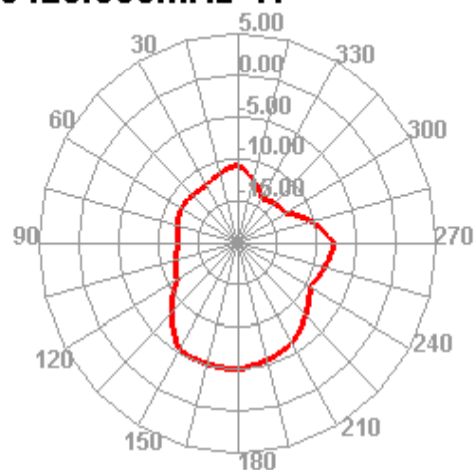
5280.000MHz E2



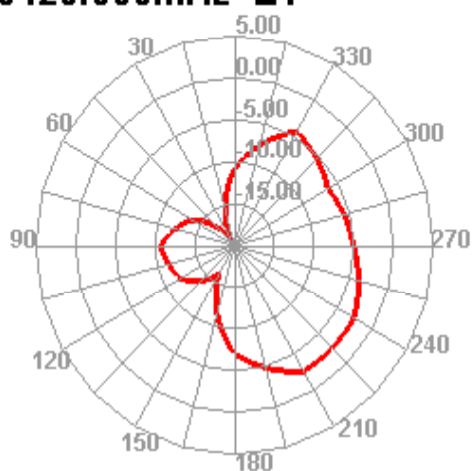
5420.000MHz



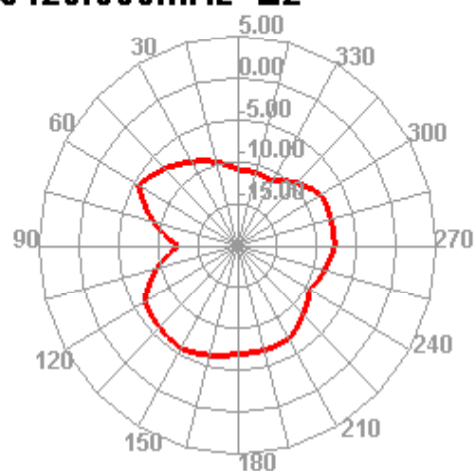
5420.000MHz H



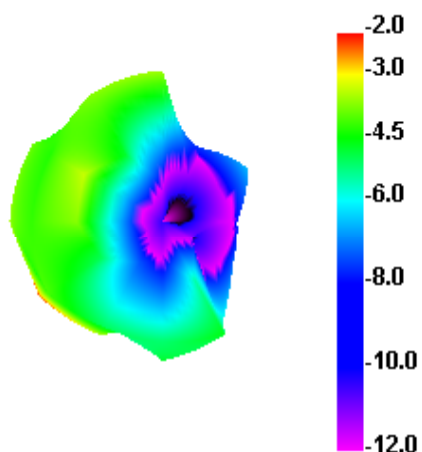
5420.000MHz E1



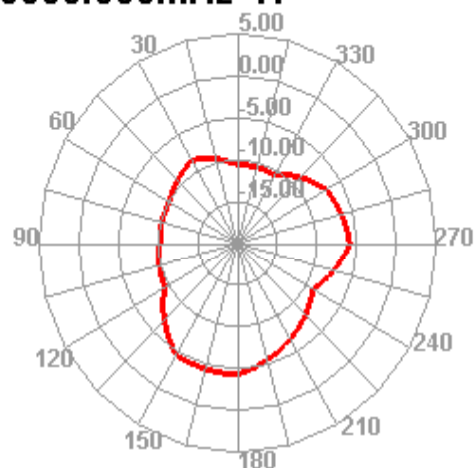
5420.000MHz E2



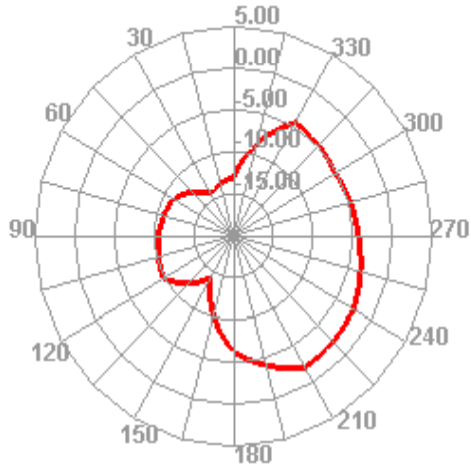
5500.000MHz



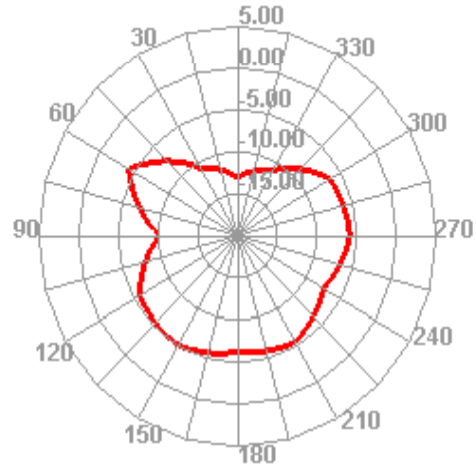
5500.000MHz H



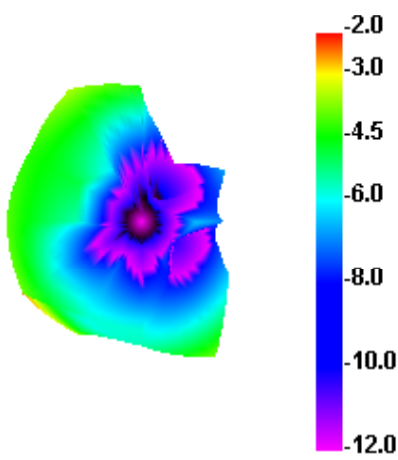
5500.000MHz E1



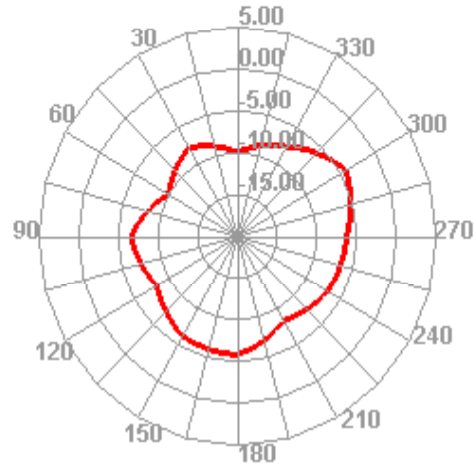
5500.000MHz E2



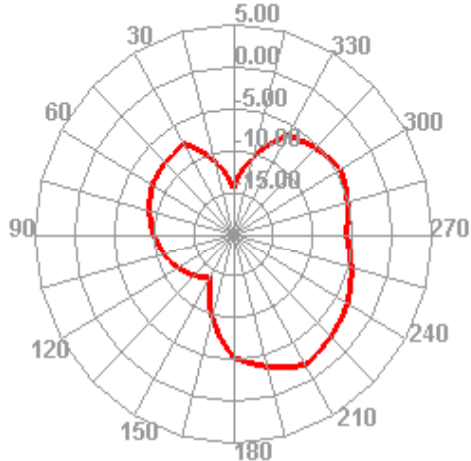
5600.000MHz



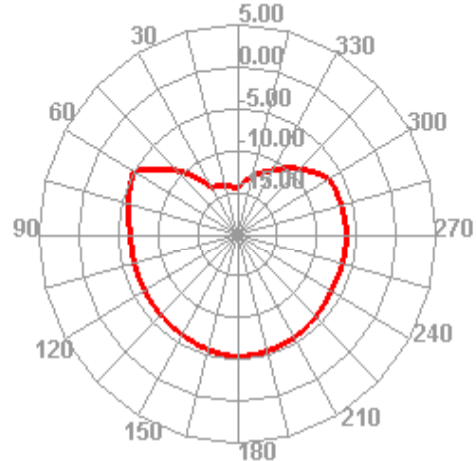
5600.000MHz H



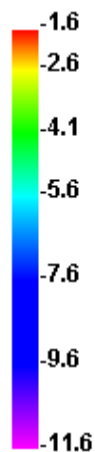
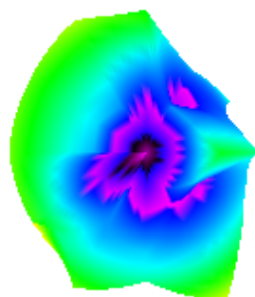
5600.000MHz E1



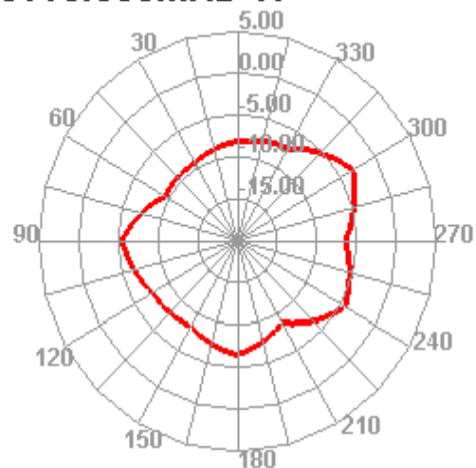
5600.000MHz E2



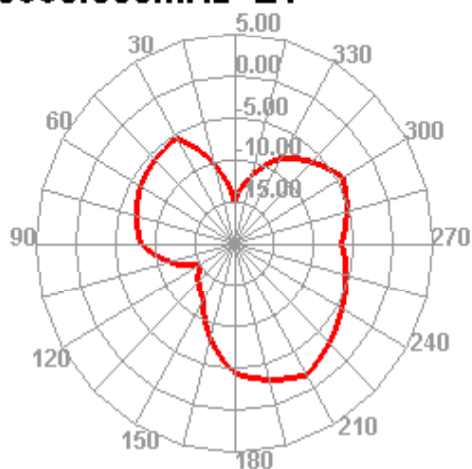
5660.000MHz



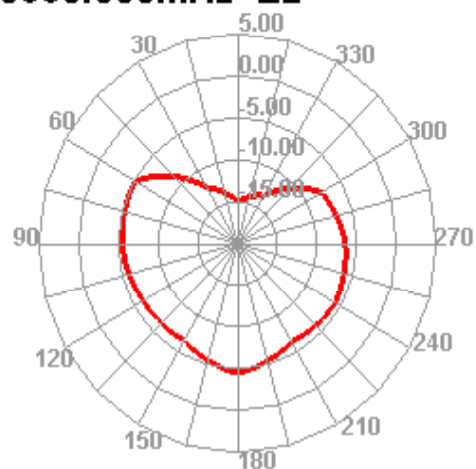
5660.000MHz H



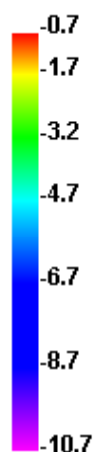
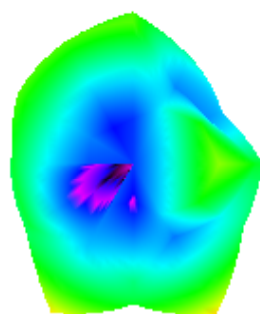
5660.000MHz E1



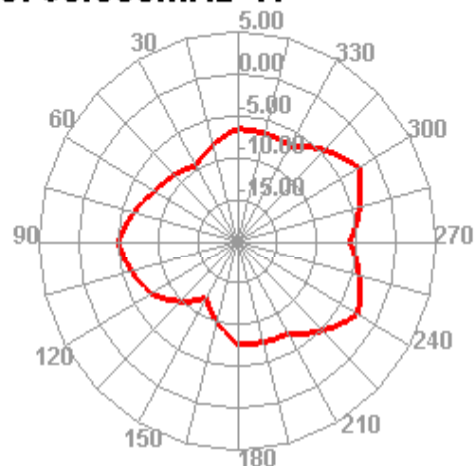
5660.000MHz E2



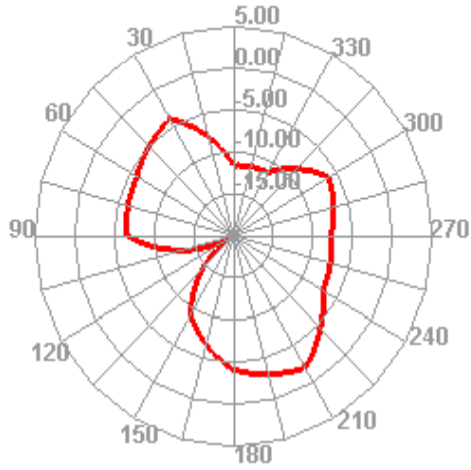
5760.000MHz



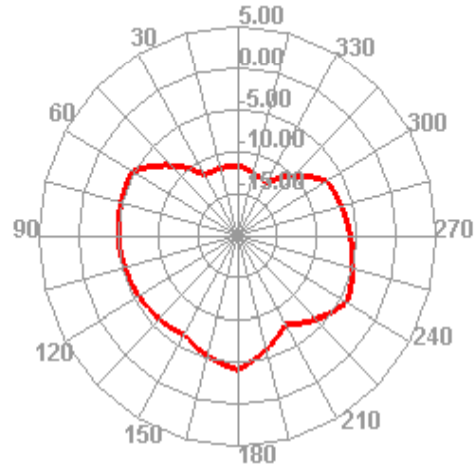
5760.000MHz H



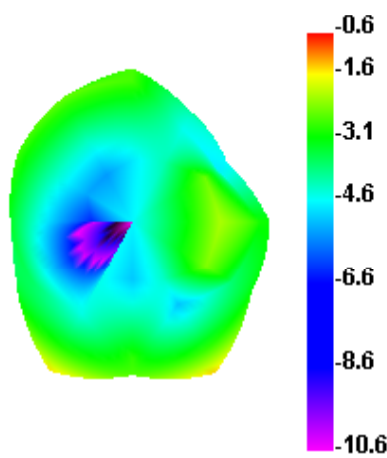
5760.000MHz E1



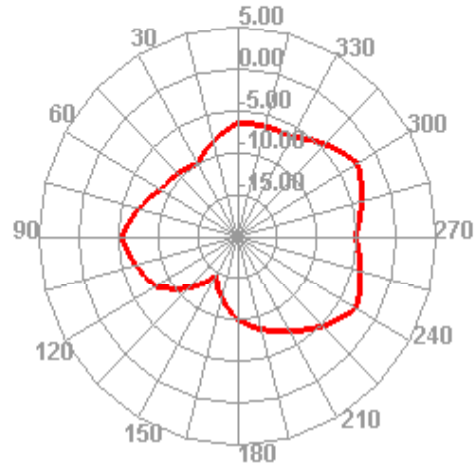
5760.000MHz E2



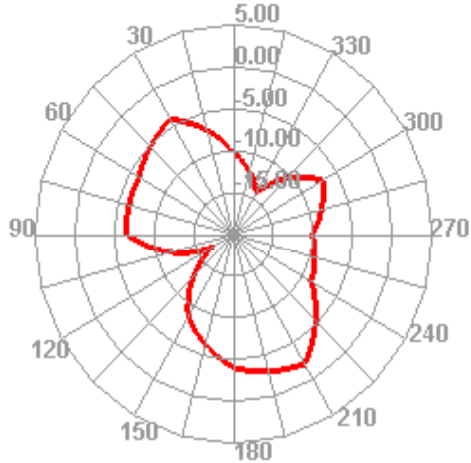
5800.000MHz



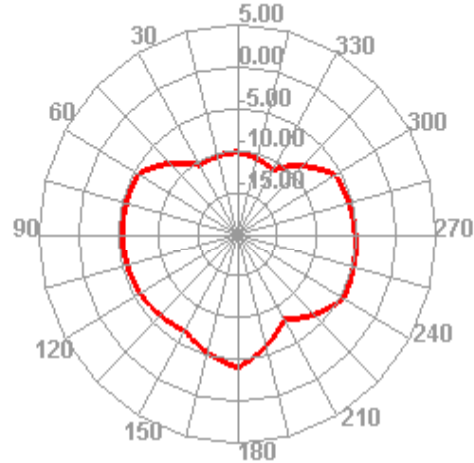
5800.000MHz H



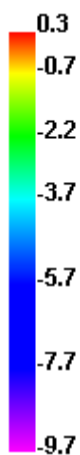
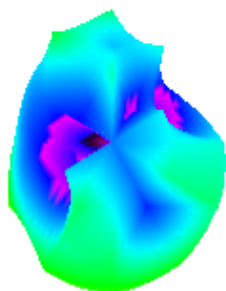
5800.000MHz E1



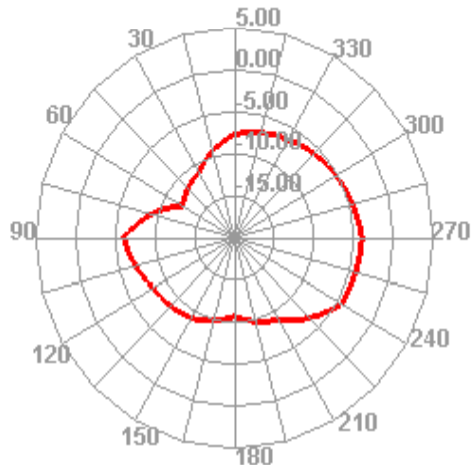
5800.000MHz E2



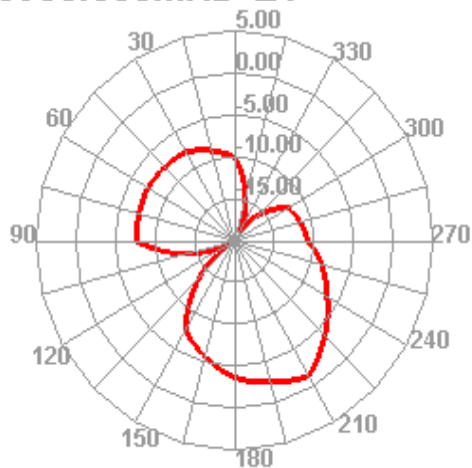
5900.000MHz



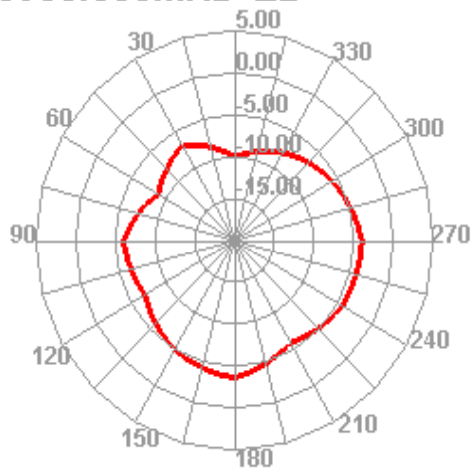
5900.000MHz H



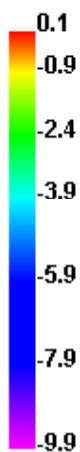
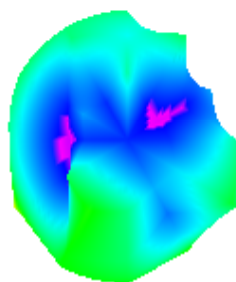
5900.000MHz E1



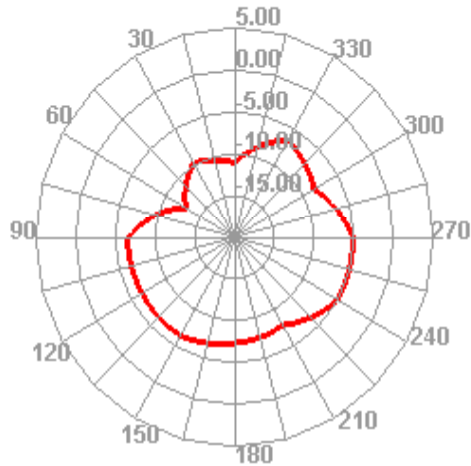
5900.000MHz E2



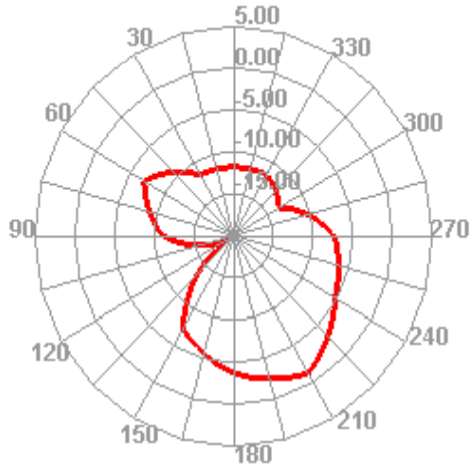
5940.000MHz



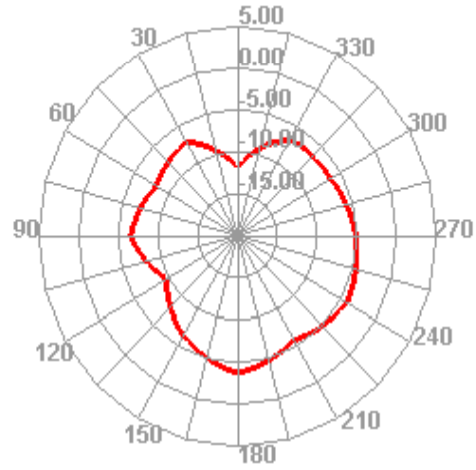
5940.000MHz H



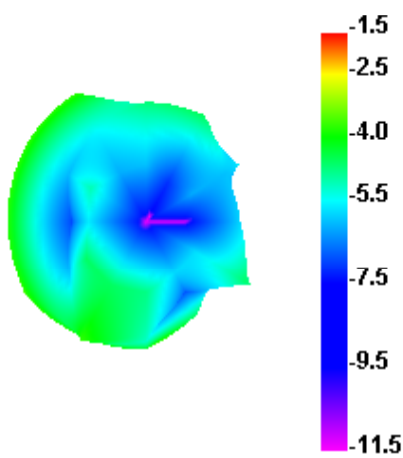
5940.000MHz E1



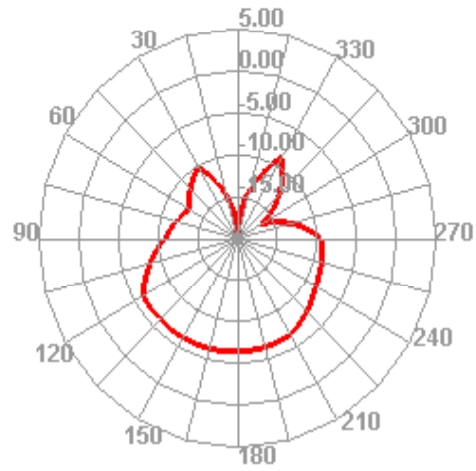
5940.000MHz E2



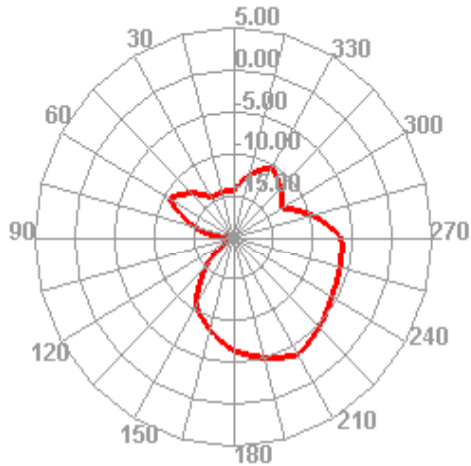
6000.000MHz



6000.000MHz H



6000.000MHz E1



6000.000MHz E2

