
DOSKING Antenna Test Report



1. Project overview:

name		items	A1012E	
product	Tablets			
	Antenna type and frequency band information		Antenna form	Match the changes
main antenna	2G:850/900/1800/1900,3G:W1900/1700/850 4G:2/4/5/12/17/25/26/41/66/71		PIFA	No
Secondary antenna	WIFI+GPS+BT		PIFA	No
Diversity antenna	2G:850/900/1800/1900,3G:W1900/1700/850 4G:2/4/5/12/17/25/26/41/66/71		PIFA	No
Antenna material	main antenna FPC; Secondary antenna FPC			

Main antenna(Antenna Label:A):

LTE B2/4/5/7/12/17/25/26/66/71/41 RX&TX ,

WCDMA B2/4/5 RX&TX

GSM B2/3/5/8 RX&TX

DIV antenna(Antenna Label:B):

LTE B2/4/5/7/12/17/25/26/66/71/41 RX,

WCDMA B2/4/5 RX

GPS/WiFi/BT:

GPS: 1570 MHz~1620 MHz

BT: 2402-2480MHz

WIFI 2.4G 2412MHz~2472MHz

WiFi 5G:5100MHz~5850MHz

2. Antenna Max. Peak Gain:

GSM850: 0.45dBi

PCS1900:-0.48dBi

WCDMA-B2: -0.48dBi

WCDMA-B4: -1.6dBi

WCDMA-B5: 0.45dBi

LTE-B2: -0.48dBi

LTE-B4: -1.6dBi

LTE-B5:0.45dBi

LTE-B12: 1.73dBi

LTE-B17: 1.73dBi

LTE-B25: -0.48dBi

LTE-B26: 0.45dBi

LTE-B66: -1.6Bi

LTE-B71: -0.59dBi

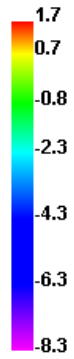
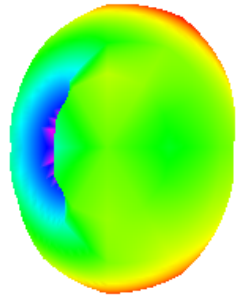
LTE-B41: 0.24dBi

2.4G-WIFI/BT: 4.03dBi

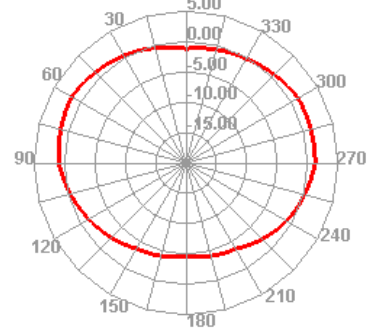
5G-WIFI: 1.85dBi

GPS: -1dBi

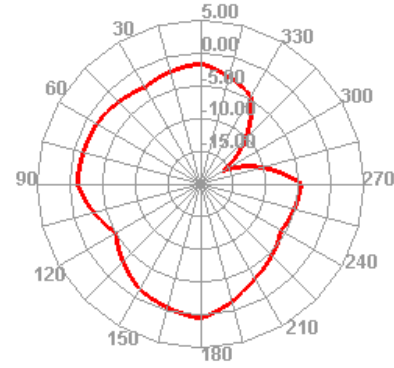
735.000MHz



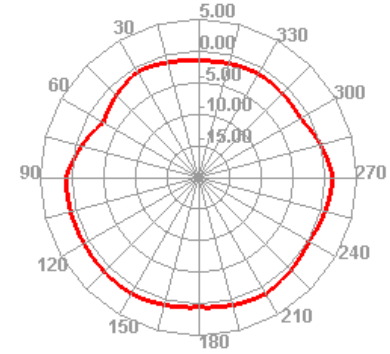
735.000MHz H



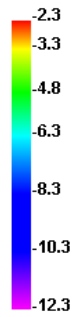
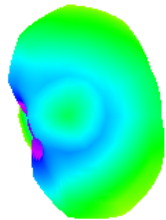
735.000MHz E1



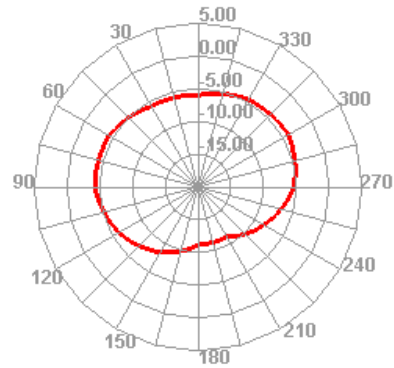
735.000MHz E2



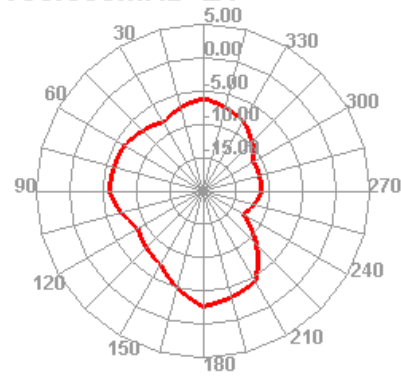
650.000MHz



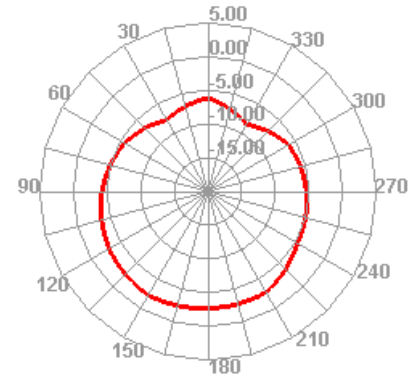
650.000MHz H



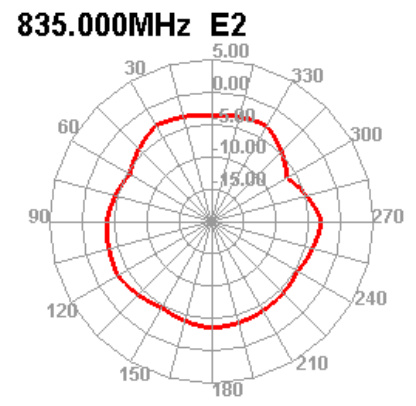
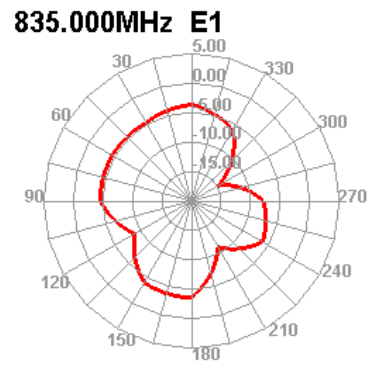
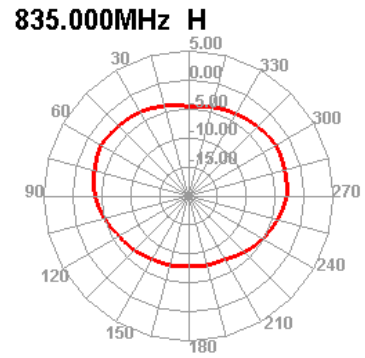
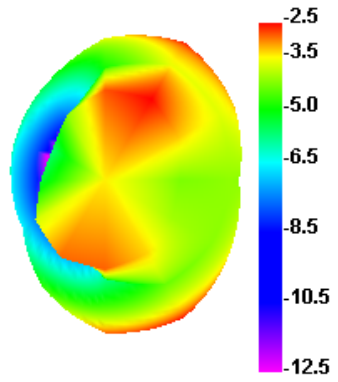
650.000MHz E1



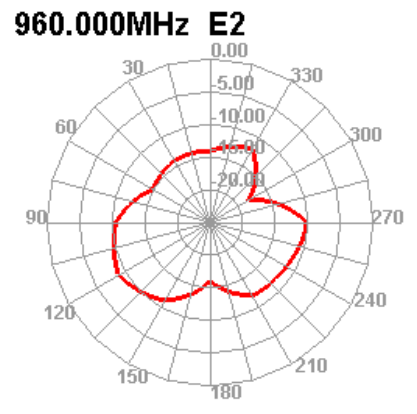
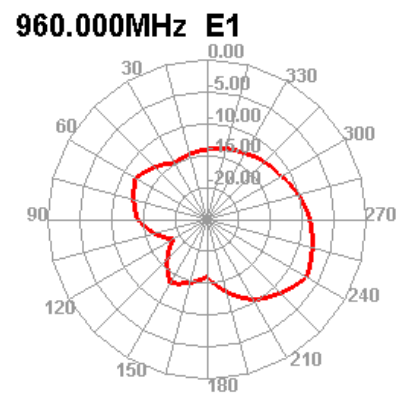
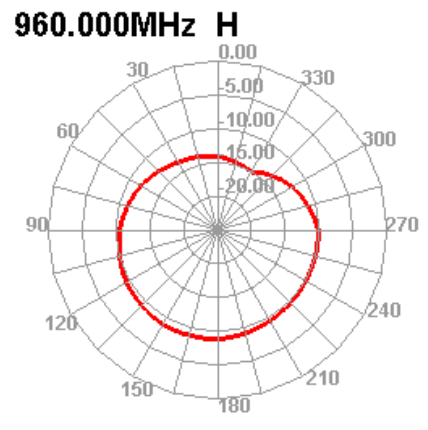
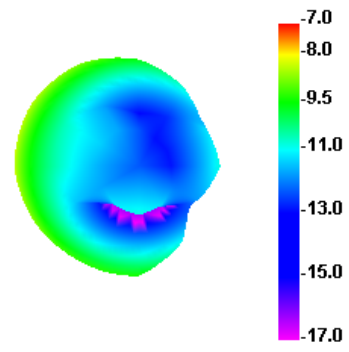
650.000MHz E2



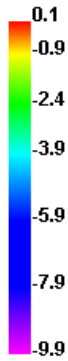
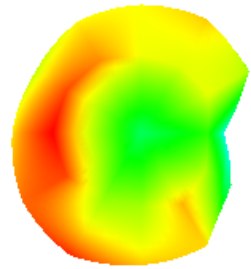
835.000MHz



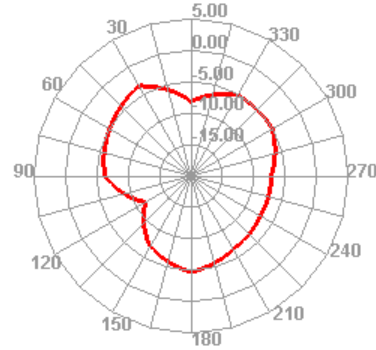
960.000MHz



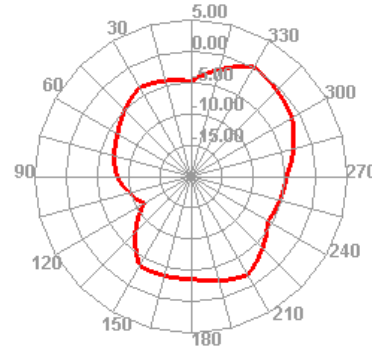
1710.000MHz



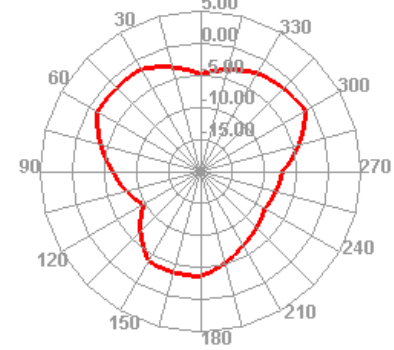
1710.000MHz H



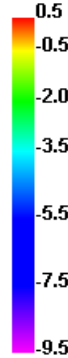
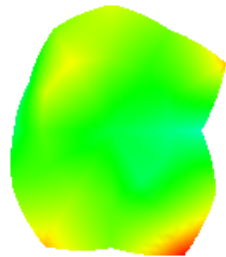
1710.000MHz E1



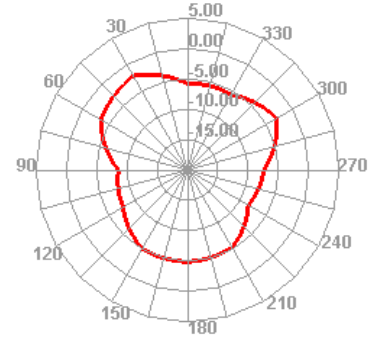
1710.000MHz E2



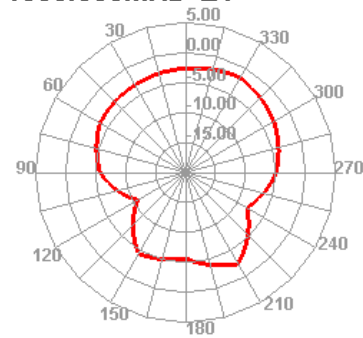
1880.000MHz



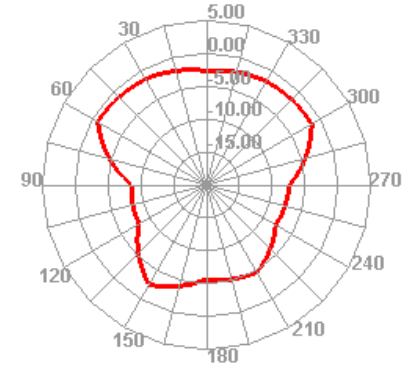
1880.000MHz H



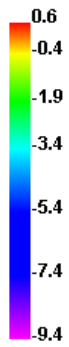
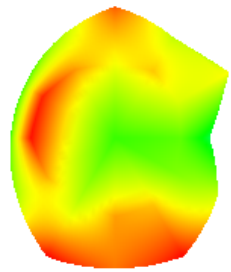
1880.000MHz E1



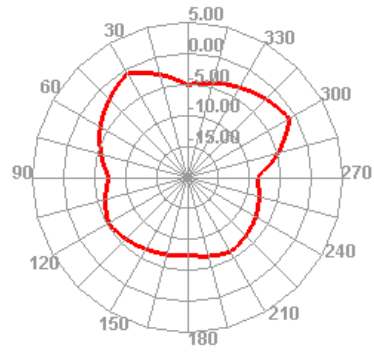
1880.000MHz E2



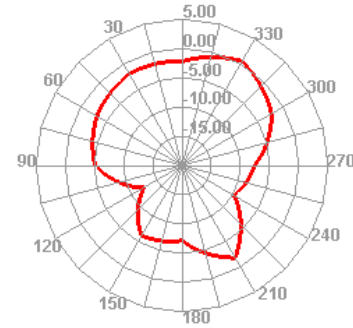
1990.000MHz



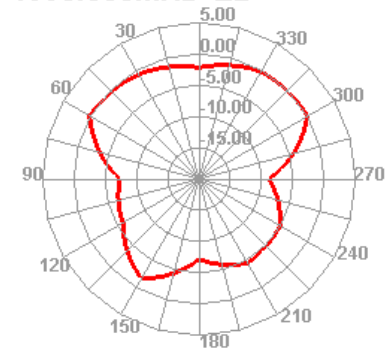
1990.000MHz H



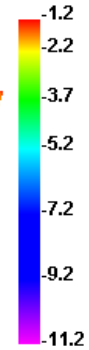
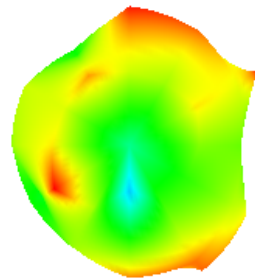
1990.000MHz E1



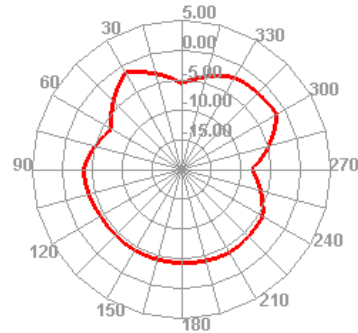
1990.000MHz E2



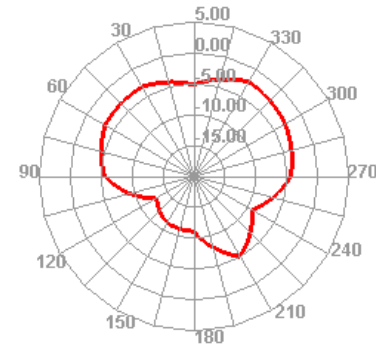
2170.000MHz



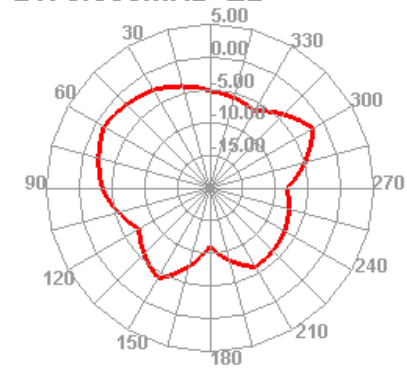
2170.000MHz H



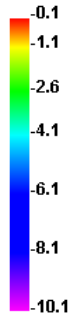
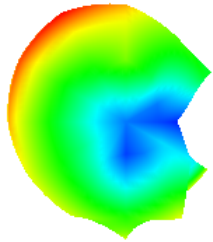
2170.000MHz E1



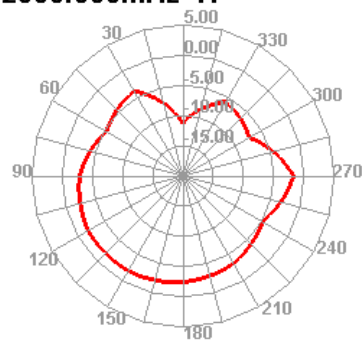
2170.000MHz E2



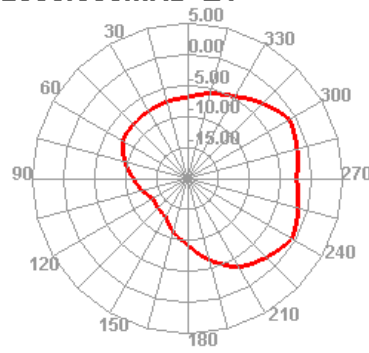
2500.000MHz



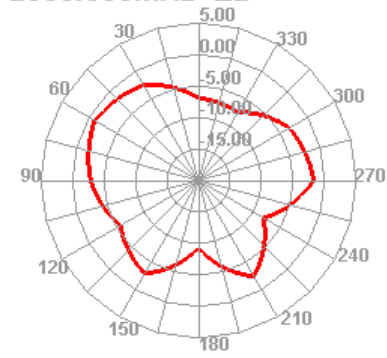
2500.000MHz H



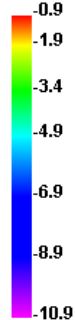
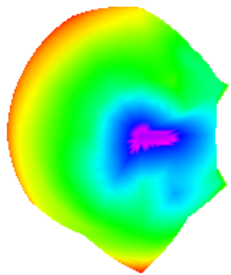
2500.000MHz E1



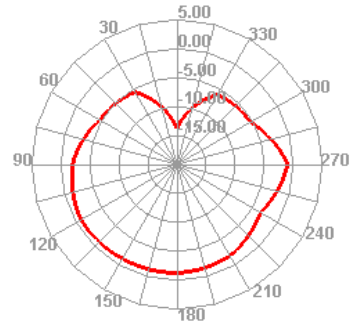
2500.000MHz E2



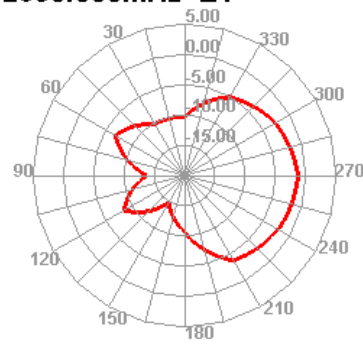
2690.000MHz



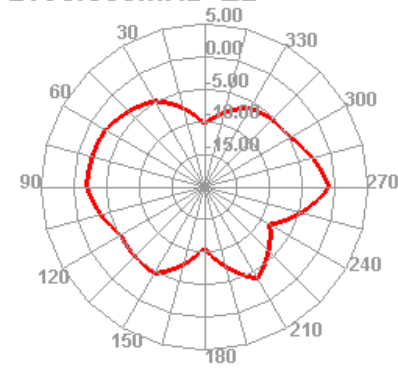
2690.000MHz H

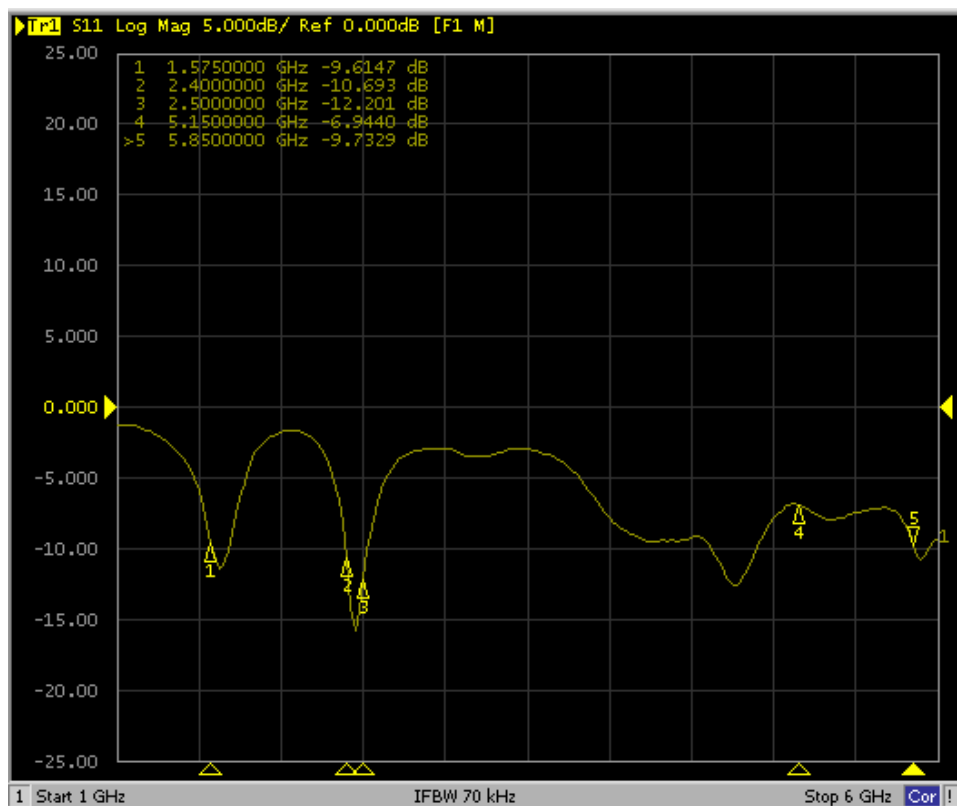


2690.000MHz E1



2690.000MHz E2

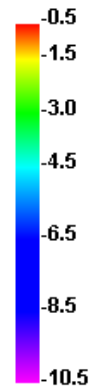
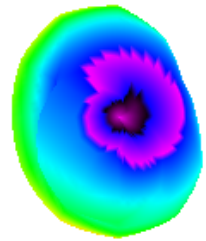




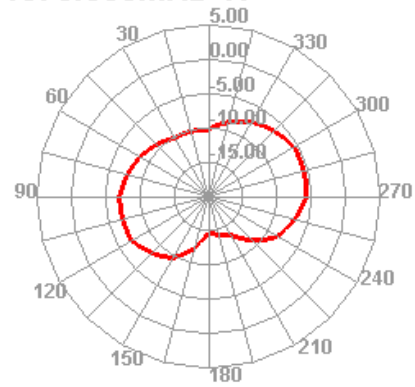
Passive Test For GPS			
Freq (MHz)	Effi (%)	Effi (dB)	Gain (dBi)
1550	34.96	-6.03	-0.25
1555	33.3	-6.33	-0.55
1560	32.7	-6.44	-0.64
1565	33.89	-6.22	-0.38
1570	33.96	-6.2	-0.31
1575	32.84	-6.41	-0.47
1580	33.03	-6.38	-0.38
1585	34.43	-6.12	-0.06
1590	35.14	-6	0.12
1595	35.28	-5.97	0.18
1600	39.63	-5.28	0.94

Passive Test For WIFI				Passive Test For WIFI5.8			
Freq (MHz)	Effi (%)	Effi (dB)	Gain (dBi)	Freq (MHz)	Effi (%)	Effi (dB)	Gain (dBi)
2400	30.39	-5.17	1.38	5150	36.13	-4.42	-0.48
2410	28.83	-5.4	1.17	5200	34.76	-4.59	-0.08
2420	33.46	-4.75	1.65	5250	38.19	-4.18	0.34
2430	35.51	-4.5	2.03	5300	36.02	-4.44	0.38
2440	38.6	-4.13	2.39	5350	42.26	-3.74	1.17
2450	42.7	-3.7	2.99	5400	46.56	-3.32	1.84
2460	44.45	-3.52	3.1	5450	39.29	-4.06	1.2
2470	48.29	-3.16	3.55	5500	39.26	-4.06	1.03
2480	52.35	-2.81	3.86	5550	39.46	-4.04	1.18
2490	54.32	-2.65	4.03	5600	42.86	-3.68	1.71
2500	55.33	-2.57	4.02	5650	45.1	-3.46	2.05
				5700	42.99	-3.67	1.18
				5750	45.95	-3.38	1.85
				5800	39.94	-3.99	0.56
				5850	44.04	-3.56	1.23

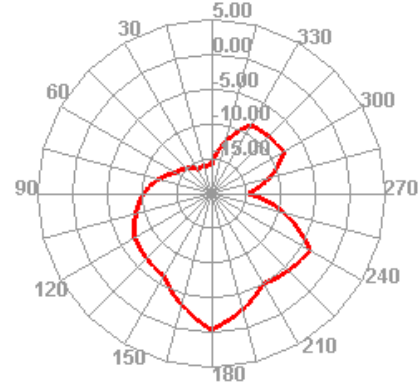
1575.000MHz



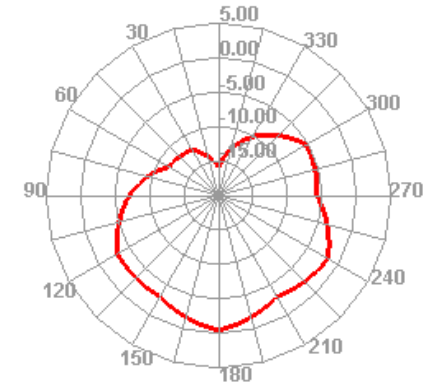
1575.000MHz H



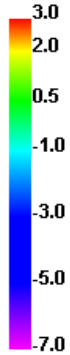
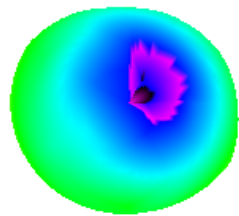
1575.000MHz E1



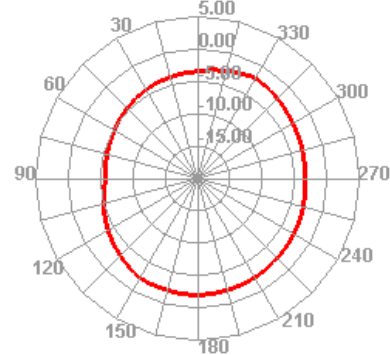
1575.000MHz E2



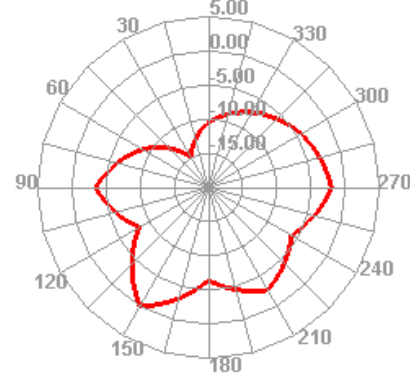
2450.000MHz



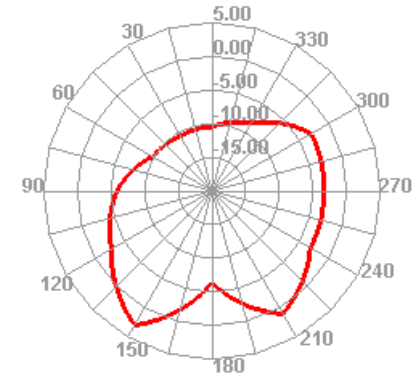
2450.000MHz H



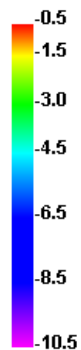
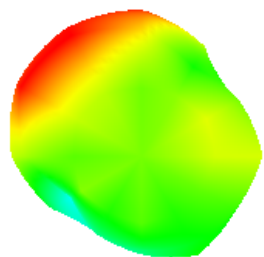
2450.000MHz E1



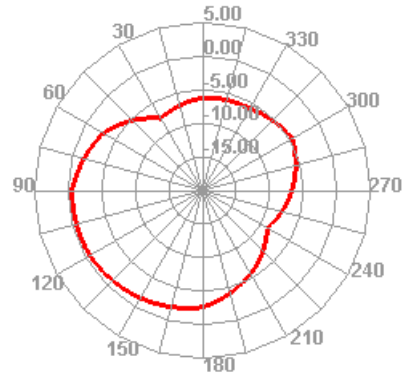
2450.000MHz E2



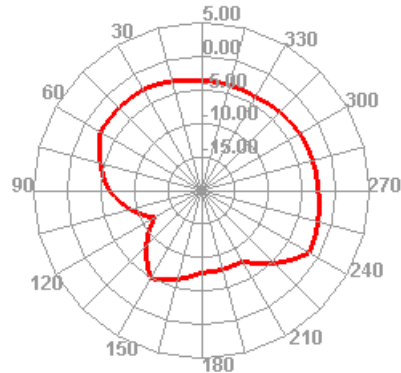
5150.000MHz



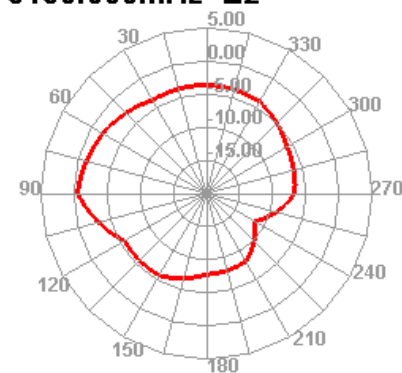
5150.000MHz H



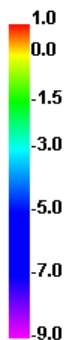
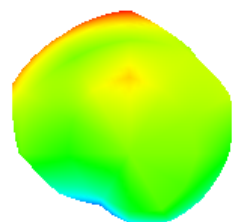
5150.000MHz E1



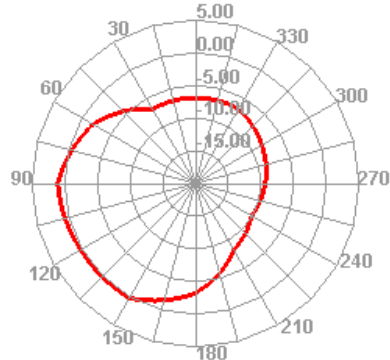
5150.000MHz E2



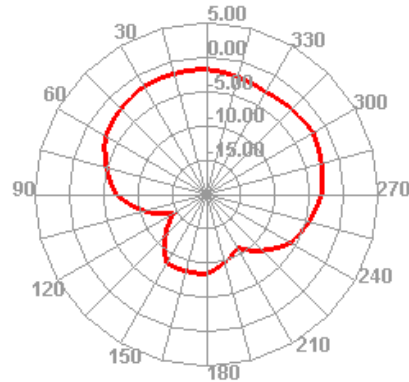
5500.000MHz



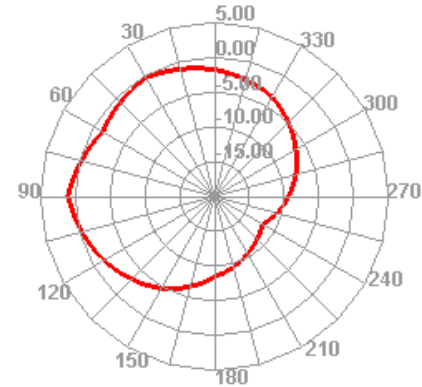
5500.000MHz H



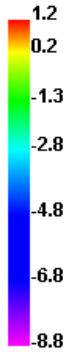
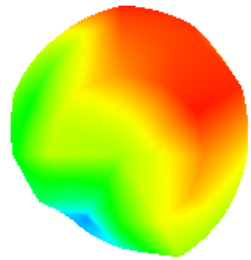
5500.000MHz E1



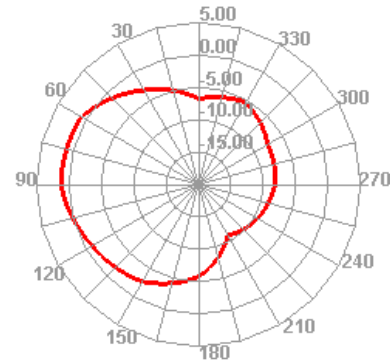
5500.000MHz E2



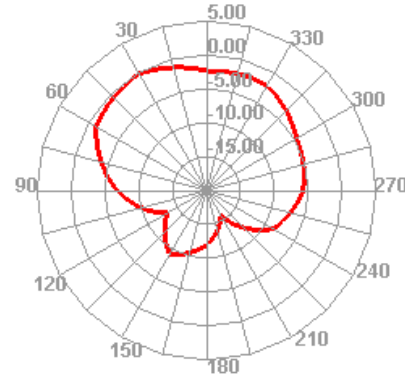
5850.000MHz



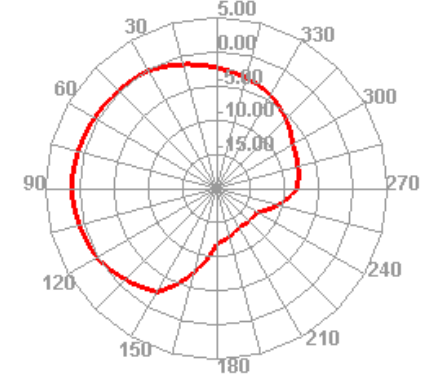
5850.000MHz H



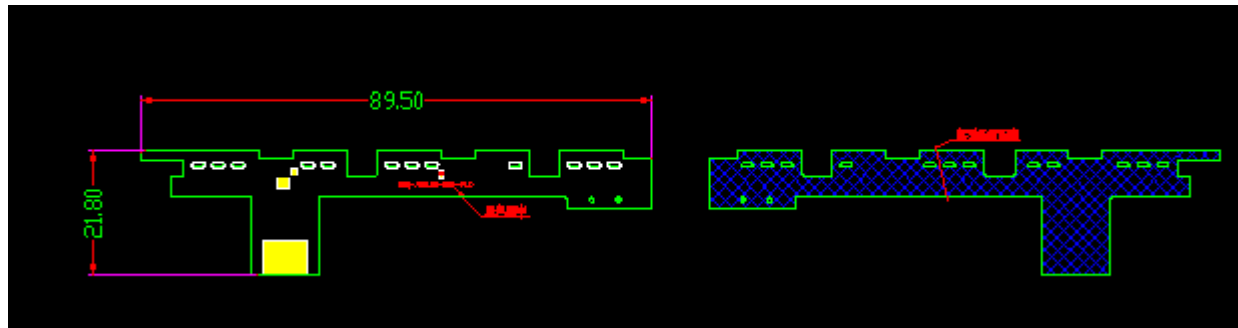
5850.000MHz E1



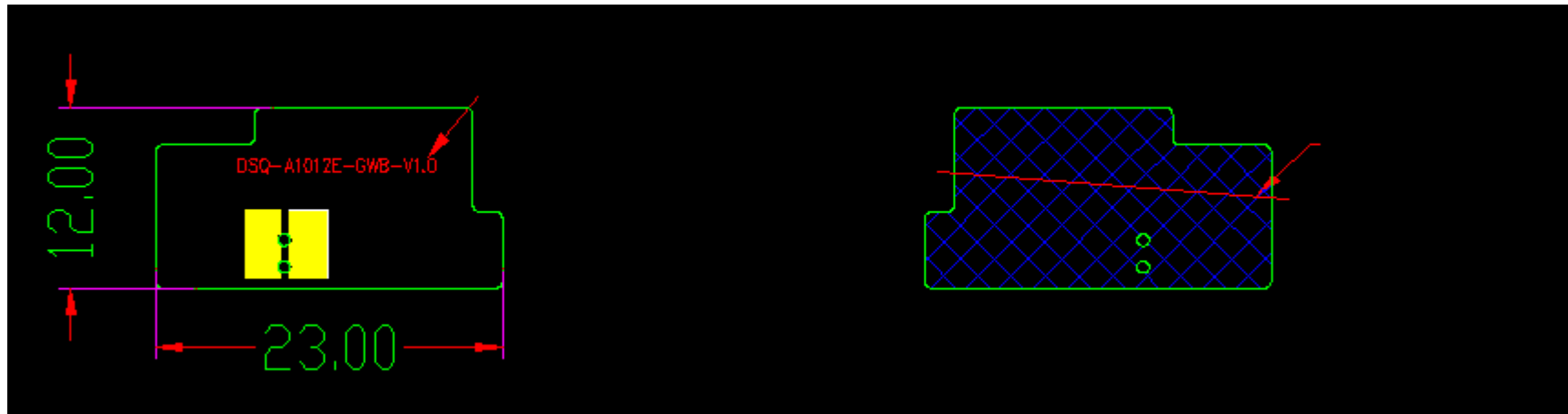
5850.000MHz E2



5.Main antenna



three-in-one



grade

