

Antenna specification

深圳市三好无线通信有限公司

Shenzhen 3Good Wireless Communication Co., Ltd

深圳市宝安区新安三路一巷 49-1 号金富来商务大厦号 501.

501, Jinfulai Business District, No. 49-1, 1st Lane, Xin'an Third Road, Bao'an District, Shenzhen

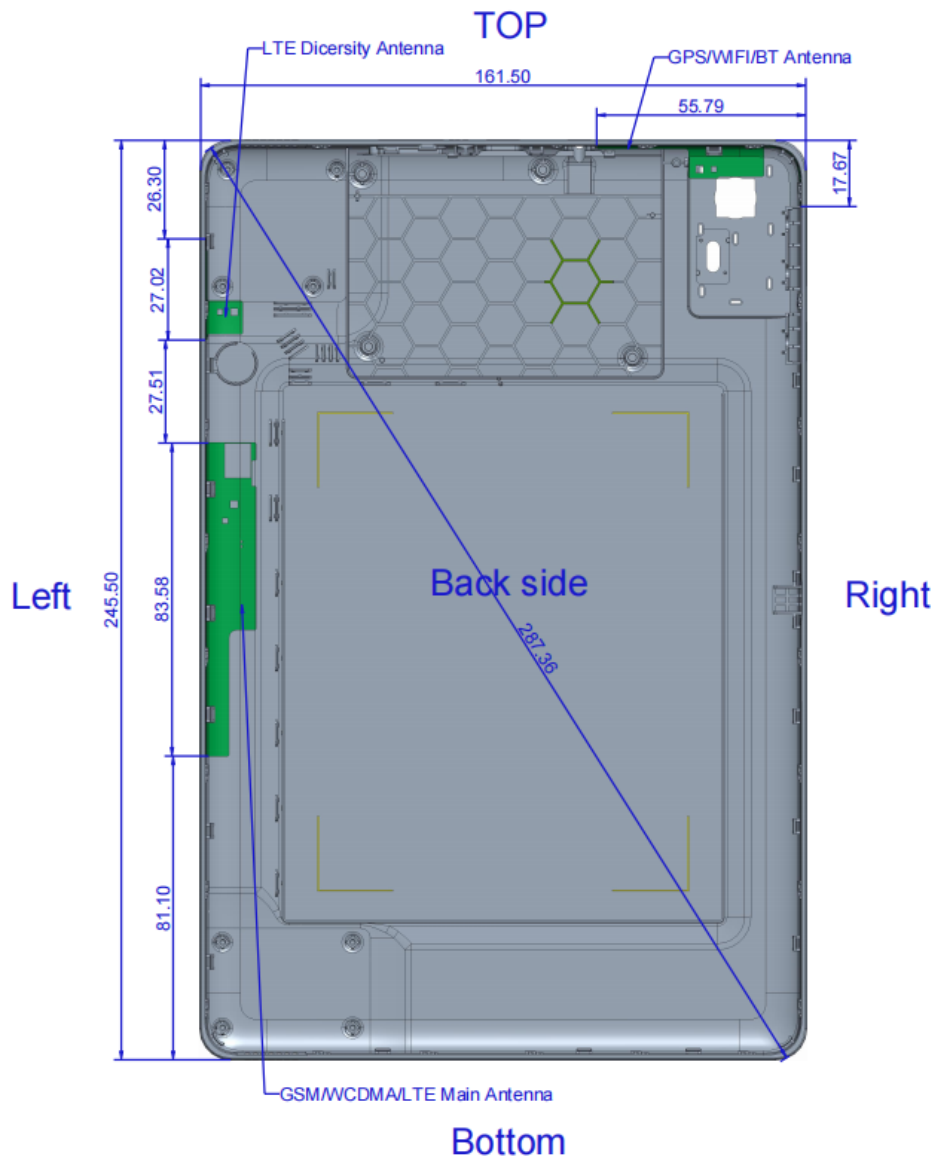
Antenna type: FPC antenna

Main antenna: WT107-MAIN-V0.5

three-in-one antenna: WT107-GWB-V0.3

Diversity antenna: WY107-DIV-V0.3

1. Antenna position



All of Implementation antenna

Main antenna(Antenna Label:A):

LTE B2/4/5/7/12/17/25/26/66/71/41 RX&TX ,

WCDMA B2/4/5 RX&TX

GSM B2/3/5/8 RX&TX

DIV antenna(Antenna Label:B):

LTE B2/4/5/7/12/17/25/26/66/71/41 RX,

WCDMA B2/4/5 RX

GPS/WiFi/BT:

GPS: 1570 MHz~1620 MHz

BT: 2402-2480MHz

WIFI 2.4G 2412MHz~2472MHz

WiFi 5G:5100MHz~5800MHz

2. Antenna Max. Peak Gain:

EGSM900:-1.2dBi

GSM850: -1.5dBi

DCS1800: -1dBi

PCS1900:-1dBi

WCDMA-B2: -1dBi

WCDMA-B4: -1dBi

WCDMA-B5: -1.5dBi

LTE-B2: -1dBi

LTE-B4: -1dBi

LTE-B5: -1.5dBi

LTE-B7: 0.5dBi

LTE-B12: -2dBi

LTE-B17: -2dBi

LTE-B25: -1dBi

LTE-B26: -1.5dBi

LTE-B66: -1Bi

LTE-B71: -2.5dBi

LTE-B41: 0.5dBi

2.4G-WIFI/BT: -0.5dBi

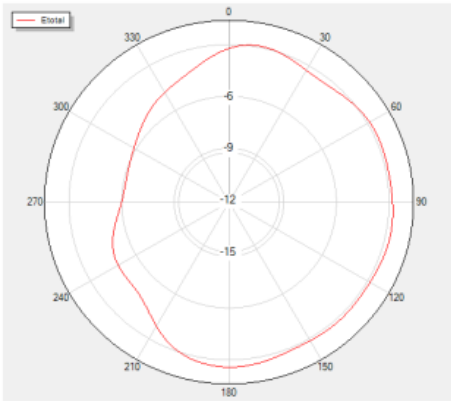
5G-WIFI: -1.2dBi

GPS: -1dBi

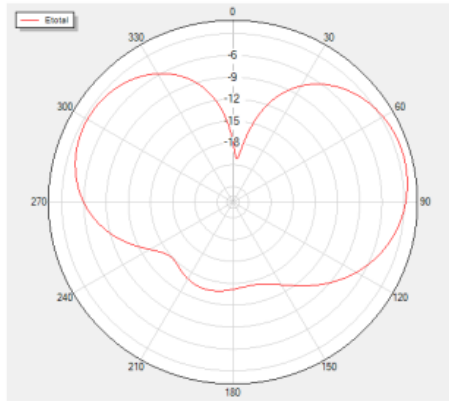
3. Antenna apple diagram

700MHz~960MHz

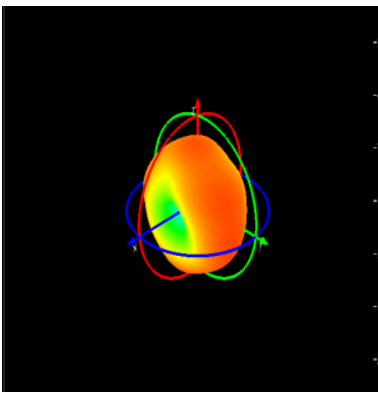
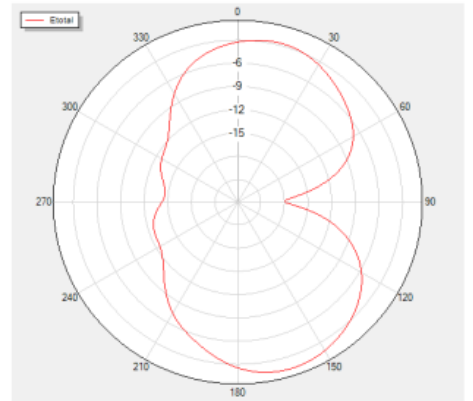
Phi=90 Freq=850MHz



Theta=90 Freq=850MHz

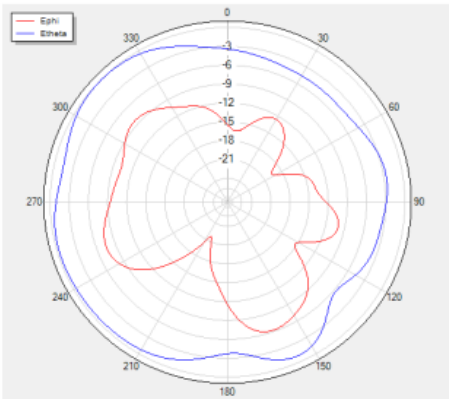


Phi=0 Freq=850MHz

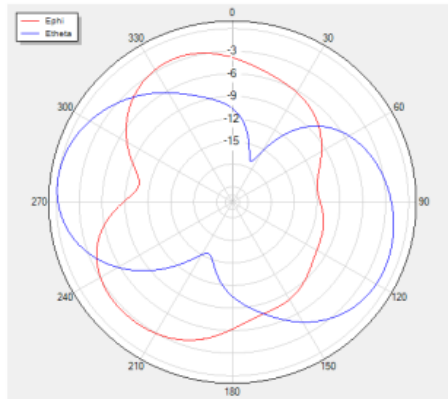


1710MHz~2700MHz

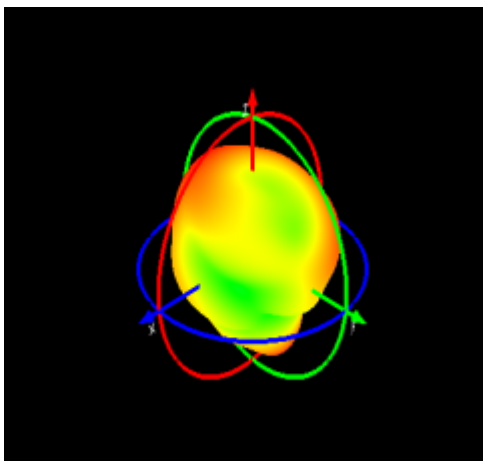
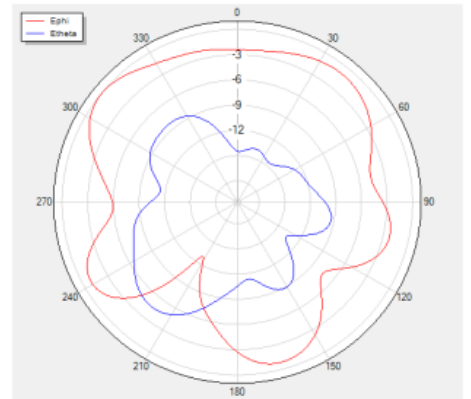
Phi=90 freq=1800MHz



Theta=90 freq=1800MHz

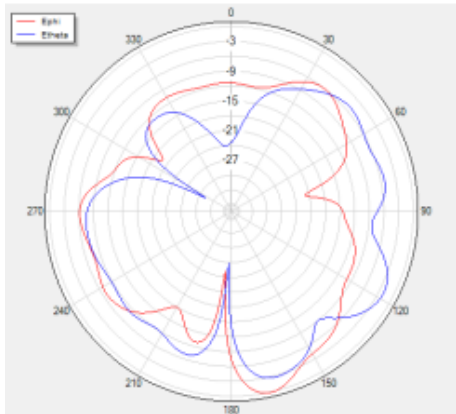


Phi=0 freq=1800MHz

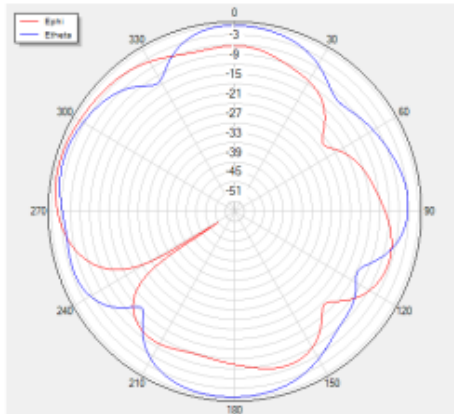


1550MHz~1600MHz (GPS)

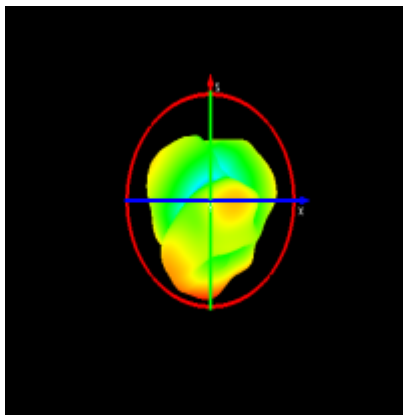
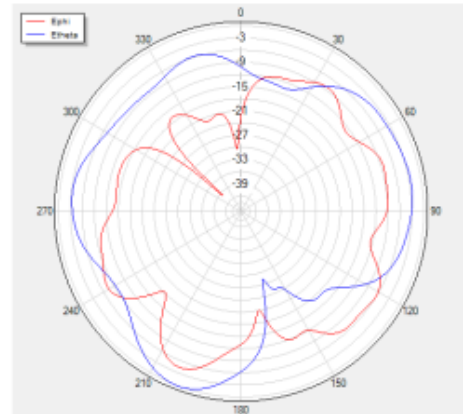
Phi=90 freq=1570MHz



Theta=90 freq=1570MHz

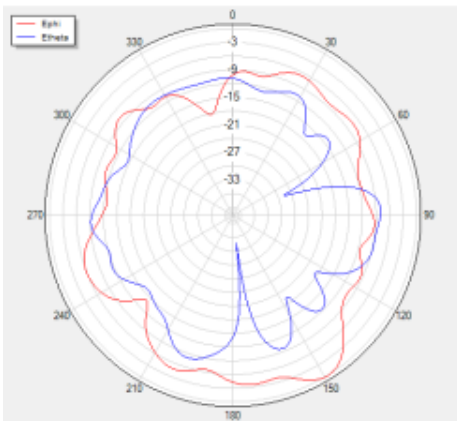


Phi=0 freq=1570MHz

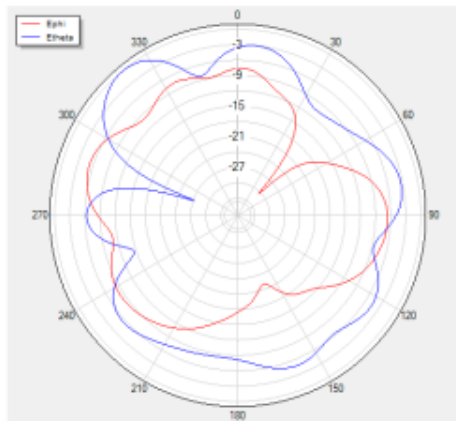


2400MHz~2500MHz (BT/WIFI 2. 4G) GWB-ANT

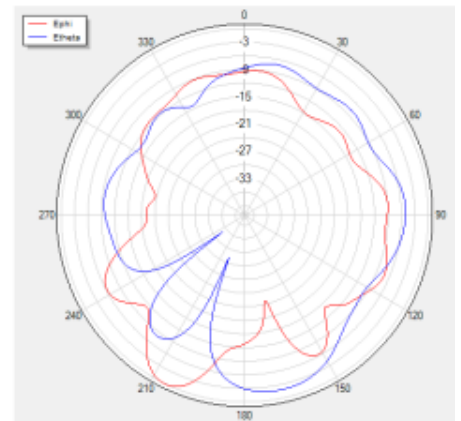
Phi=90 freq=2440MHz

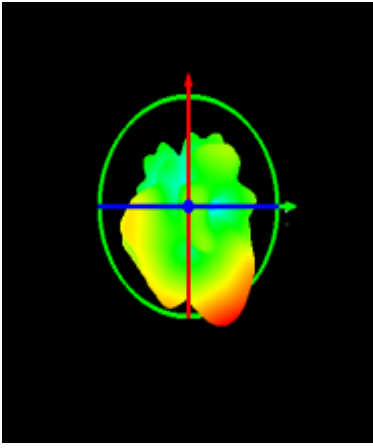


Theta=90 freq=2440MHz



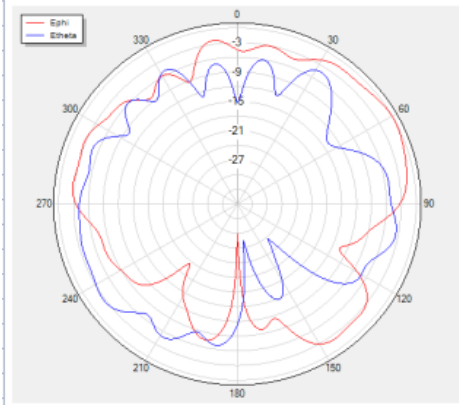
Phi=0 freq=2440MHz



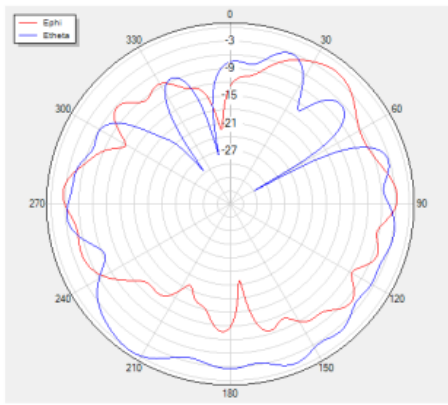


5100MHz~5800MHz (WIFI 5G)

Phi=90 freq=5740MHz



Theta=90 freq=5740MHz



Phi=0 freq=5740MHz

