



# NuraBuds User Manual



Model: NuraBuds

SKU: T0BB

R FCC ID: 2ANIN-T0BBR

L FCC ID: 2ANIN-T0BBL

Power: 5V, 0.2A

Wireless frequency band: 2402-2480 MHz

Manufacturer, EU Importer: NURA OPERATIONS PTY LTD, PO Box 95, Brunswick, VIC 3056, Australia





# Contents

<b>NuraBuds safety information</b>	<b>3</b>
<b>Getting started</b>	<b>5</b>
What's in the box	5
Fitting your NuraBuds	6
Turning your NuraBuds on/off	6
Downloading the Nura app	6
Connecting your NuraBuds with Bluetooth®	7
Swapping between Bluetooth® devices	7
Updating your NuraBuds	7
<b>Your NuraBuds</b>	<b>8</b>
Charging your NuraBuds	8
Checking your NuraBuds battery	8
Using the Touch Buttons	8
Making and receiving voice calls with your NuraBuds	9
Connecting your NuraBuds to other products	9
Computers	9
TVs	9
Changing your NuraBuds ear tips	10
Cleaning the NuraBuds	10
<b>The Nura app</b>	<b>11</b>
Nura app features	11
Personalising Your NuraBuds	12
Choosing your level Immersion	12
Adjusting your Active Noise Cancellation (ANC)/ Social Mode	12
Changing the NuraBuds voice language	13
<b>Troubleshooting</b>	<b>14</b>
Resetting your NuraBuds	14
Charging troubleshooting	14
Nura App troubleshooting	14
Bluetooth troubleshooting	14
Voice calls troubleshooting	15
Sound Quality troubleshooting	16
TouchDials troubleshooting	16
<b>Need more help?</b>	<b>16</b>
<b>Warranty</b>	<b>16</b>
<b>Compliance</b>	<b>17</b>



# NuraBuds safety information



**Read this manual before using the NuraBuds for the first time.  
Keep this manual handy for future reference.**

The NuraBuds have been designed and tested for safety and comfort, but please note: exposure to any noise of 85 Decibels (dB) or above (approximately the same volume as a food blender) can cause gradual hearing loss. Due to the clarity and noise cancelling of the NuraBuds, you won't need to listen to your music as loudly as with many conventional headphones.

Monitor your use. Hearing loss is a function of loudness versus time — the louder the volume, the less time you can be exposed to it. The quieter the volume, the longer you can listen. For example, 8 hours at 85 dB causes as much damage as 4 hours at 88 dB, 2 hours at 91 dB, or just 15 minutes at 100 dB.

Only use the NuraBuds with the volume set at a comfortable, moderate level.

Do not listen to music at a high volume for any extended period.

Be aware that reminders or warning sounds, i.e. alarms, message tones and incoming calls, might vary while using the NuraBuds.

If you experience a warming sensation or loss of hearing, remove the NuraBuds from your head immediately and contact Nura support.

If the NuraBuds emit a loud or unusual noise, stop using it and contact Nura support immediately.

Due to noise-cancelling technology, do not use the NuraBuds at any time when an inability to hear may present a danger to yourself or others. For example, while driving, riding a bicycle, in a construction site, or in or near traffic.

If you're using the NuraBuds for phone calls while driving, then use caution and follow applicable laws regarding mobile phone and headphone use. Some jurisdictions impose specific limitations such as using a single earpiece while driving.

Use only certified Nura cables to charge the NuraBuds.

Charging the NuraBuds should be done only by following the instructions in this user manual.

Do not make unauthorised alterations to this product. Any attempt to do so will void the warranty.

CAUTION the battery shall not be exposed to excessive heat such as sunshine, or the like.

## DISPOSE OF USED BATTERIES ACCORDING TO THE INSTRUCTIONS

Disposal of a battery into fire or a hot oven, or mechanically crushing or cutting of a battery, can result in an explosion.

Leaving a battery in an extremely high temperature surrounding environment can result in an explosion or the leakage of flammable liquid or gas.

A battery subjected to extremely low air pressure may result in an explosion or the leakage of flammable liquid or gas.



Contains small parts which may be a choking hazard. Not suitable for children under age 3.



This product contains magnetic material. Consult your physician on whether this might affect your implantable medical device.



Li-ion

Removal of the rechargeable lithium-ion battery in this product should be conducted only by a qualified professional.

**Button batteries pose a serious hazard to children. Keep small cells and batteries that are considered swallowable away from children.**

**Swallowing may lead to burns, perforation of soft tissue and death.**

**Serious injury can occur in as little as 2 hours. Death or lifelong injury and impairment can result.**

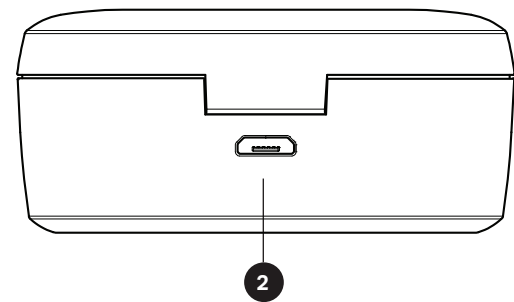
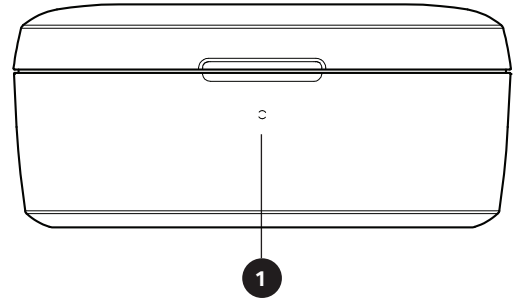
**In case of ingestion of a cell or a battery, seek medical assistance promptly**



# Getting started

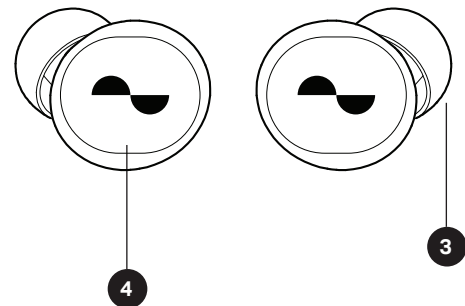
## Charging Case

- 1 LED charging light
- 2 Micro-USB charging port



## NuraBuds

- 3 Removable ear bud
- 4 Touch Buttons



---

## What's in the box

Your NuraBuds will come with:

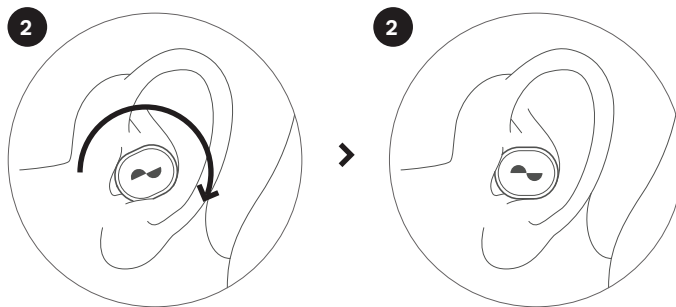
- 1. NuraBuds
- 2. Charging case
- 3. USB-A to micro-USB charging cable
- 4. 3 x Multi-Sized silicone ear tips



## Fitting your NuraBuds

### Put your NuraBuds On

1. Left and Right - Hold the earbud marked L in your left hand, and the earbud marked R in your right hand
2. Adjust the fit - Insert the ear tips into your ears and slightly twist backwards to find the right fit. Your NuraTrue should feel secure and comfortable.
3. To ensure your NuraBuds fits comfortably, try the different sized ear tips to find what works best for you.



## Turning your NuraBuds on/off

**To Power On:** Remove your NuraBuds from its charging case.

**To Power Off:** Place your NuraBuds into the charging case.

**Note:** NuraBuds won't turn off if the case is out of battery. For instructions on charging the case, see below.

## Downloading the Nura App

To set up your NuraBuds, you'll need to download the Nura app.

### You can download the Nura app from:

- iOS — the App Store
- Android — Google Play

### Nura app system requirements:

- iOS — iOS 9.3+ and Bluetooth® 4
- Android — Android 5.0+ and Bluetooth® 4



## Connecting Your NuraBuds with Bluetooth®

You'll need to pair your NuraBuds to your mobile device via Bluetooth to access the Nura App.

### To connect your NuraBuds with Bluetooth:

1. To enter pairing mode, tap and hold down both touch buttons on each side.
2. On your mobile device go to **Settings > Bluetooth**
3. Select **NuraBuds XXX. XXX** is the NuraBuds unique pairing number.

## Swapping Between Bluetooth® devices

Your NuraBuds automatically enters discoverable mode for two minutes. To enter pairing mode, tap and hold down both touch buttons on each side.

When your NuraBuds are in discoverable mode, select NuraBuds XXX in the Bluetooth settings of any device you'd like to switch to.

A voice prompt will announce "Bluetooth device changed."

You have now swapped your connection.

## Updating Your NuraBuds

In order to access the latest and greatest features for your NuraBuds make sure you update:

### Your Nura App

To update the Nura App, open the App Store (for iOS devices) or Google Play (for Android devices) to check for available updates.

### Your NuraBuds

Every now and then, we'll add significant improvements to the NuraBuds with a firmware upgrade. These will be either automatically applied to your device or you may need to perform the below.

To update your NuraBuds firmware:

1. Open the Nura app.
2. A message will appear that an update is available, tap **Start** update,  
or, Tap **Menu > Device Settings > Software update > Start update**
3. Your upgrade will begin.

Feel free to take off your NuraBuds, but keep it close to your phone with the screen turned on.



# Your NuraBuds

This section contains everything you need to know about using your NuraBuds.

## Charging the NuraBuds and Case

The NuraBuds battery provides 4 hours of wireless use, and up to 10 hours of use when using the charging case.

- **To charge your NuraBuds**, place them in the case and close the lid. Your NuraBuds shuts down and charges when placed inside the case. Your case holds multiple full charges for your NuraBuds so you can charge on the move. To keep your NuraBuds charged, put them in the case when you're not using them. The NuraBuds battery takes approximately two hours to fully charge.
- **To charge your case**, connect the case to the included USB-A to micro-USB charging cable and plug it into a computer or wall adapter. The charging case has LED lights which indicate when it's charging. The NuraBuds charging case takes approximately two hours to fully charge.

## Checking the NuraBuds Battery

While connected to your NuraBuds, you can check the battery indicator in the top-right corner of the Nura app.

A voice prompt will announce your battery level when you first put on your NuraBuds.

A voice prompt will also announce "battery low" when your NuraBuds needs charging.

A voice prompt will announce "battery critical" when your NuraBuds are about to power off.

## Using the NuraBuds Touch Buttons

The NuraBuds have touch buttons on each side that you can tap to perform useful functions.

You can customise your touch buttons in the Nura app:

1. Open the Nura app with your NuraBuds connected via Bluetooth to your device.
2. Tap on the Menu icon at the top left (☰).
3. Tap on **Device settings > Configure Touch Buttons**.
4. Choose the Tap controls you wish to adjust

### Tap/Double Tap

- Play/Pause
- Play/Pause/Answer Call/Hang-up Call
- Next Track
- Previous Track
- Toggle ANC/Social Mode
- Toggle Immersion Mode
- Volume Up
- Volume Down





### **Tap and Hold**

Tap and hold both touch buttons to enter pairing mode.

## **Making and Receiving Voice Calls With Your NuraBuds**

The NuraBuds include highly sensitive microphones for enhanced voice call quality.

When your NuraBuds are connected via Bluetooth, you can answer voice calls:

- Directly on your phone;
- Or by using the NuraBuds Touch buttons, if you have customised the functionality within the Nura app.

### **Connecting Your NuraBuds to Other Products**

You can connect your NuraBuds to other products in the following ways:

#### **Computers**

##### **Mac**

1. Tap and hold down both touch buttons on each side of your NuraBuds to enter pairing mode.
2. On your Mac, choose Apple menu > System Preferences, then click Bluetooth.
3. Select NuraBuds XXX on the device list. XXX is the NuraBuds unique pairing number.

Your NuraBuds are now connected.

##### **PC**

1. Tap and hold down both touch buttons on each side of your NuraBuds to enter pairing mode.
2. Click the Bluetooth icon on your computer's taskbar.
3. From Bluetooth & other devices, click Add Bluetooth or other device.
4. Select NuraBuds XXX. XXX is the NuraBuds unique pairing number.

##### **TVs**

Audio configurations on TVs vary. Check your TV's connectivity is compatible with NuraBuds connectivity.



## Changing the NuraBuds Ear Tips

The NuraBuds come with three ear tip sizes. Try all the ear tip sizes to find the ones that best fit your ears. You'll know you have a good seal if the sound around you quiets when you put on your NuraBuds.

### To change the NuraBuds ear tips:

1. Gently pull the ear tip to remove.
2. Push the new ear tip onto the NuraBuds.
3. Check the new ear tip is pushed on all the way.

### Cleaning the NuraBuds

Your NuraBuds need cleaning from time to time.

Please note: never use alcohol, cleaning solvents, or strong detergents when cleaning the NuraBuds.

### To clean the NuraBuds Ear Tips:

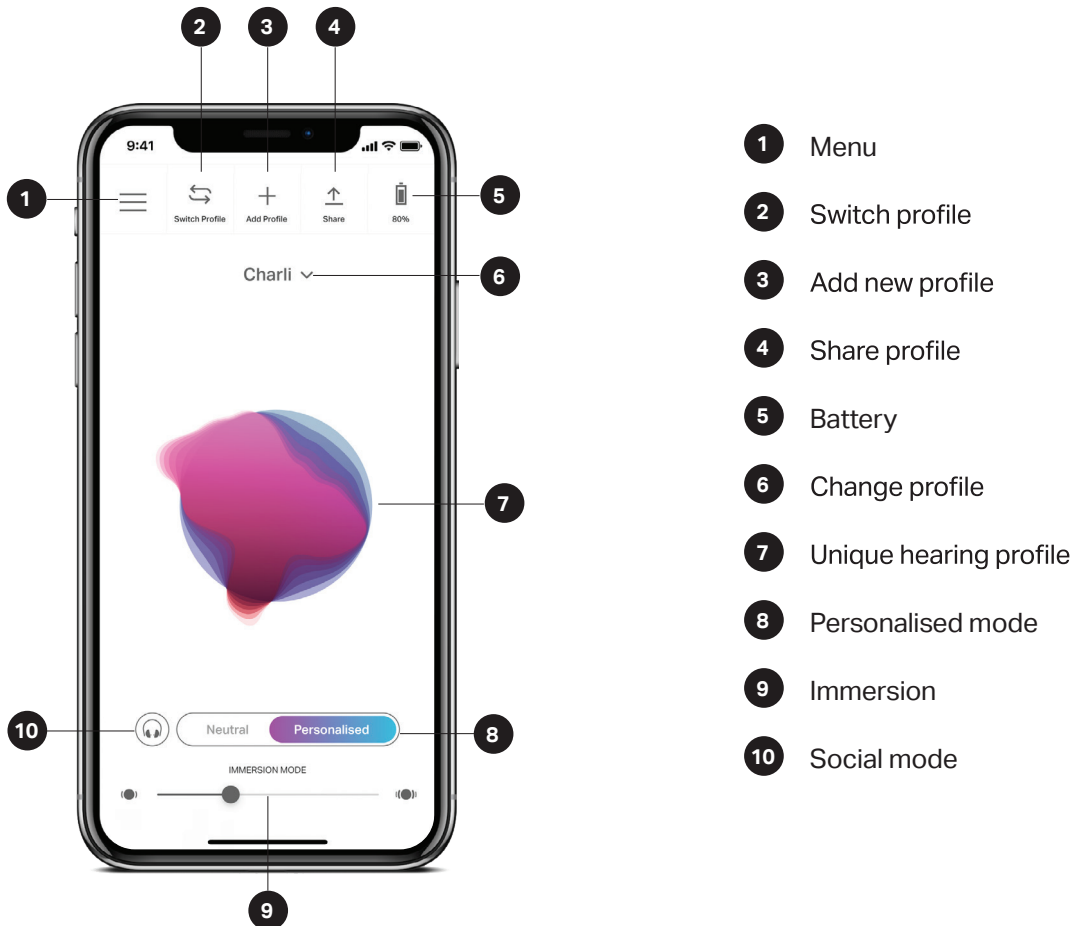
1. Remove the ear tips, and wash them with water and a mild detergent.
2. Rinse and dry the ear tips and set aside.
3. Reattach the ear tips.
4. Wipe the NuraBuds with a soft, damp cloth.



# The Nura app

Read on for everything that you need to know about the Nura app —

With the Nura app, you can adjust the level of Immersion, change or add Hearing Profiles, check battery status, enable/disable ANC and Social Mode, and more.





## Personalising Your NuraBuds

You can import a hearing profile created using a NuraSound product (such as a Nuraphone, NuraBuds or NuraTrue) to experience personalised sound on your NuraBuds.

1. Create a hearing profile created using a NuraSound product to experience personalised sound on your NuraBuds.
2. Your hearing profile is saved to your Nura account. Simply disconnect your NuraSound product and connect your NuraBuds to the Nura app and select "Import profile".

To share your hearing profile with another Nura account, click "Export profile" and enter the email associated with the Nura account you want to send to.

## Choosing the Level of Immersion

1. Open the Nura app.
2. Use the **Immersion** slider to choose your preferred level of bass.

Please note: always set your Immersion to a comfortable, moderate level when you're using your NuraBuds for an extended period of time.

## Adjusting your Active Noise Cancellation (ANC)/ Social Mode

Active Noise Cancellation reduces outside noise so you can focus on your music.

Social Mode passes outside sound into your NuraBuds so you can hear conversations and your surroundings.

You can adjust ANC/ Social Mode via the Touch buttons or in-app:

### Touch Buttons

You can assign Social Mode to the Tap function on either side by customising the Tap functions within the Nura app. Doing so will simply toggle Social Mode On/Off.

### In-app

1. Tap the Social Mode button on the homepage of the Nura app.

### Turning ANC Off/On:

1. Open the Nura app with your NuraBuds connected via Bluetooth to your device.
2. Tap on the Menu icon at the top left (☰).
3. Tap on **Device settings**.
4. Scroll down to **Enable Social Mode & ANC (Active Noise Cancellation)**,
5. Tap on the setting to toggle it on or off.



## Changing the NuraBuds Voice Language

The NuraBuds voice announces the battery level and identifies connected devices. To change the language:

1. Open the Nura app.
2. Tap on the Menu icon at the top left (☰).
3. Tap on **Device settings > Change voice language**.
4. Choose your preferred language.
5. To confirm the change, tap **Yes**.

Please note: it takes approximately 10 minutes for the voice language to change. The NuraBuds need to install new software to change your language.