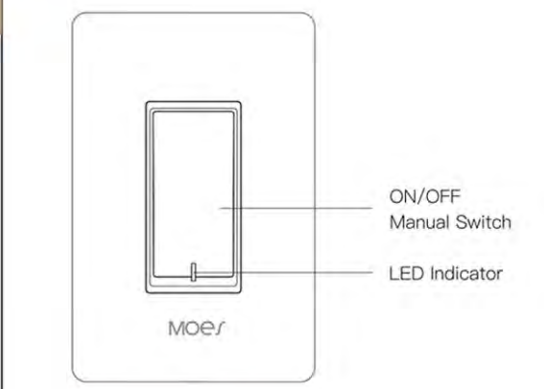


3-Way Smart Light Switch

INSTRUCTIONS

Enjoy Your Smart Life



Indicator Light Status

Light Color	Light Status	Switch Status
White	ON	Power OFF
	OFF	Power ON
Red	Steady on	Energy-saving mode
	Blink quickly(0.25s Interval)	Ready for default configuration mode
	Blink slowly(1.5s Interval)	Ready for AP/Access Point configuration mode
	Turn on for 10s and then turns off	Configured successfully but the network disconnects suddenly

Safety Information

Risk of Electric Shock: Electricity can cause personal injury and property damage if handled improperly. If you are not sure about any part of these instructions, please seek professional assistance from a qualified electrician.

Warnings

- Turn off the power at the circuit breaker and test that power is off before wiring.
- Check supported maximum wattage rating: 1250W.

Prepare Other Tools You'll Need

- Screwdriver
- Plier
- Electrical Tester

Installation

Note:

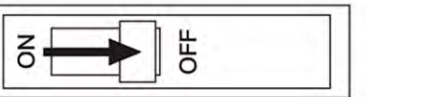
- Make sure that the power at the circuit breaker is off before wiring.
- Neutral Wire is required. Confirm the wall box contains a Neutral Wire (typically white). If the wall box don't have a Neutral Wire, please try

another location in your home or call a professional electrician to install the switch.

- The wire colors indicated in this manual are the usual colors and may differ in some homes.
- Ensure the wire conductors are securely fastened to each wire.
- Ensure the WiFi signal is strong before wiring.
- If you don't have any wiring experience, please call a professional electrician.

STEP 1

Turn off the circuit breaker and use the electrical tester to test the power. Ensure the switch is off before wiring.

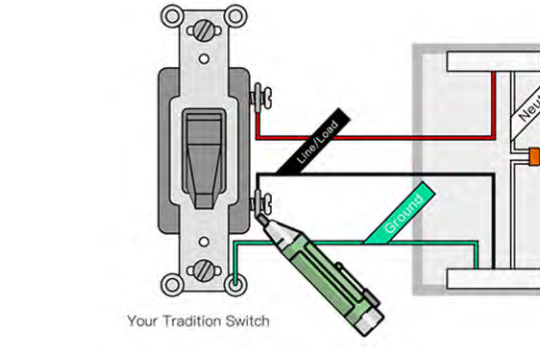


STEP 2

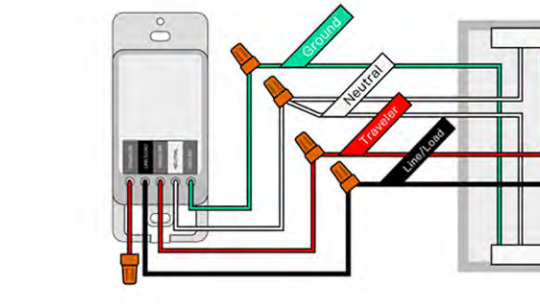
Remove the existing wall plate; turn on the power at the circuit breaker and use an electrical tester to check which wire is line/load wire; the tester will flash and/or chirp when it comes close to a load/line wire.

Turn off the power at the circuit breaker and use the electric tester to test if the power is off, and then pull the existing switch out; label the line/load wire and other wires; disconnect the wires from the existing switch with plier.

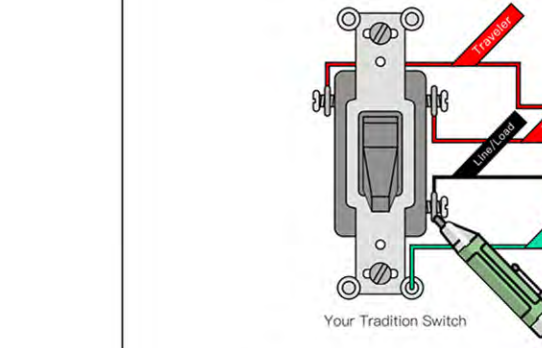
• Single pole: for lights controlled from 1 location.



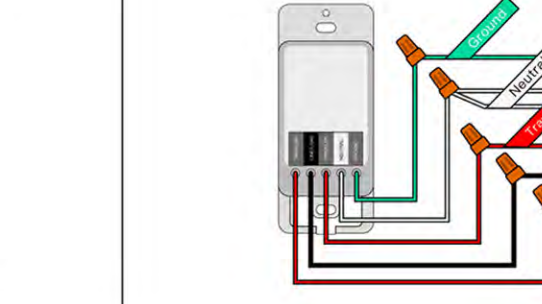
Follow the wiring diagram to connect the switch wires to the wires in the wall box with the wire conductors.



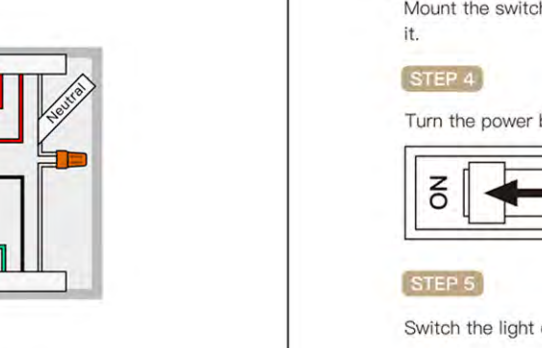
• 3-way switch: for lights controlled from 2 location.



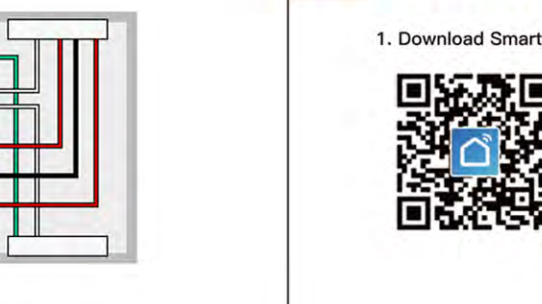
Follow the wiring diagram to connect the switch wires to the wires in the wall box with the wire conductors.



• 3-way switch: for lights controlled from 2 location.



Follow the wiring diagram to connect the switch wires to the wires in the wall box with the wire conductors.

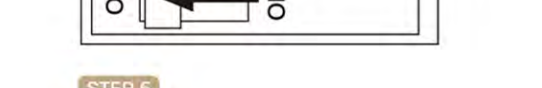


STEP 3

Mount the switch with the provided screws and snap the wall plate on it.

STEP 4

Turn the power back on at the circuit breaker.



STEP 5

Switch the light on.

Add Devices

1. Download Smart Life APP



2. Registration or Log In

Download "Smart Life" Application.

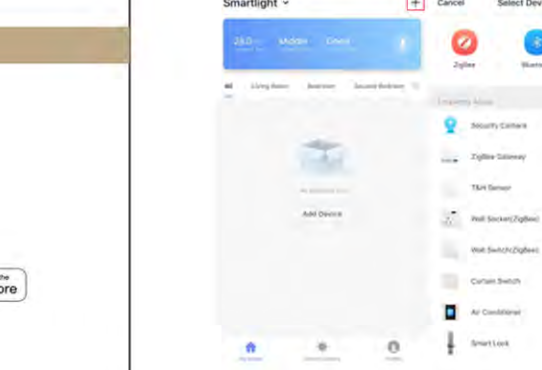
Enter the Register/Login interface; tap "Register" to create an account by entering your phone number to get verification code and "Set password". Choose "Log in" if you already have a Smart Life account.

3. Configure the APP to the Switch

Preparation: Ensure the switch has connected with electricity; ensure your phone has connected to WiFi router and is able to connect to the internet.

Note: this switch only supports 2.4G network. If you have connected 5G network, please disconnect 5G network firstly.

- Tap the icon "+," on the top right corner to Select Device Type; tap "All" and choose "Wall Switch".



3.1 Default Configuration Mode

Press and hold the manual switch for 5 seconds until the red indicator light blinks quickly.

- Tap "Confirm indicator rapidly blink"; enter WiFi Password; wait for completing the connection.
- Devices have added successfully; if you can only find one switch, please start the above steps to configure the other switch again.

3.2 AP Mode

If you cannot configure successfully with the default mode, please try to connect with AP Mode.

- Tap "AP Mode" on the top right corner.
- Press and hold the manual switch for 5 seconds, you can see the red indicator light blinks quickly. Then press and hold for 5s again until the indicator light blinks slowly.
- Tap "Confirm indicator slowly blink".



Specification

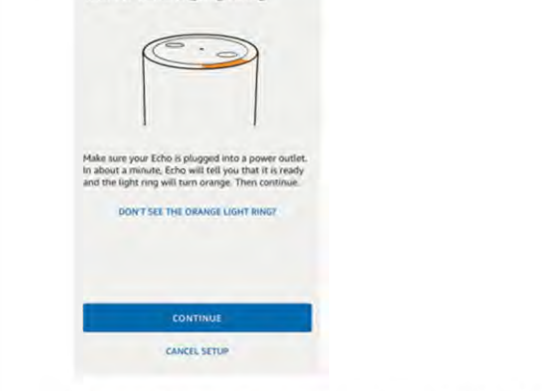
Brand Name	MOES
Model Number	SS01
Input Voltage	AC90V~250V, 50/60Hz
Output Current	10A Maximum Resistive Load 5A Incandescent
Wireless Frequency	2.4G
Wireless Standard	IEEE802.11 b/g/n
Support System	Android 4.1 and above or IOS 9.0 and above
Operating Temperature	5°C~45°C
Working Humidity	35%~85% RH
Disconnection Means	Type 1B
Pollution Degree	2
Rated Impulse Voltage	4000V
Automatic Action	10000 cycles

Troubleshooting Guide

Possible Problem	Possible Cause	Solution
Unable to connect the switch with the phone	The switch is not allowed for connection or the switch has been connected	Press and hold the switch for 5s, the switch will initiate configuration
Unable to turn the switch on/off manually	Incorrect wiring	Make sure the switch is wired correctly
	No electricity	Check the circuit breaker; make sure that the power is restored to the switch
	The light bulb is broken or is not compatible	Replace the light bulb
The switch won't respond to APP control	Network delays or is disconnected	Check your network connectivity
	Permission is denied by your phone	Grant permission on your phone Settings
	The switch is out of order	Manually switch on to check the switch
Your light bulb is blinking when the light bulb and the switch are not compatible	Electric leakage occurs or the light bulb and the switch are not compatible	Rewire or replace the light bulb
The switch can't connect to the APP	Enter wrong WiFi password	Enter the correct WiFi password
	Weak WiFi signal	Check WiFi signal
	Unable to connect to WiFi	Confirm Your WiFi is 2.4G

Enable Smart Life Skill in Alexa APP

Note: at this moment, the mobile phone can not open a variety of VPN software.



3. Choose your own WiFi and wait for a few minutes. After an introduction video, click next step, it will enter Home page automatically. Now the Echo has connected to Wi-Fi successfully.

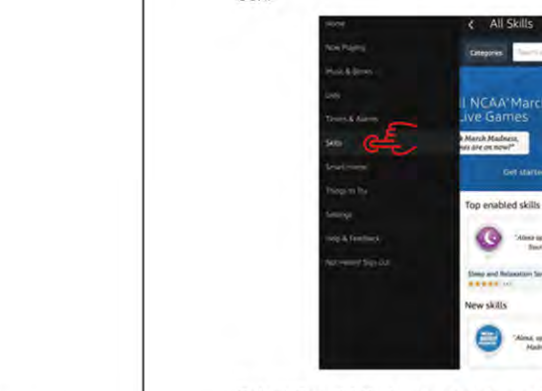
Set your Echo speaker by Alexa APP

1. If you have finished to install Smart Life then open Amazon Alexa App; sign in your Alexa account and enter password.

2. Click the menu on the left corner- click "Settings"; choose "Set up a new device" (choose a device, like Echo) **Note:** When the below page appears, long press the small dot on your Echo device until the light turns to yellow. Then click Continue on App.

Enable Smart Life Skill in Alexa APP

Choose "Skills" in the options bar, and then search "Smart Life" in the input box.



Select Smart Life in the search results, and then click "Enable Skill".

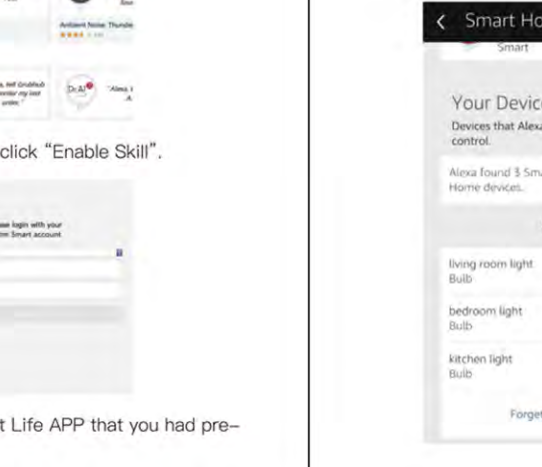
Then input the user name and password of Smart Life APP that you had previously registered.

Control the Light Switch by Voice

After the above operation is successful, you can control the Light Switch via Echo.

1. Discover Devices

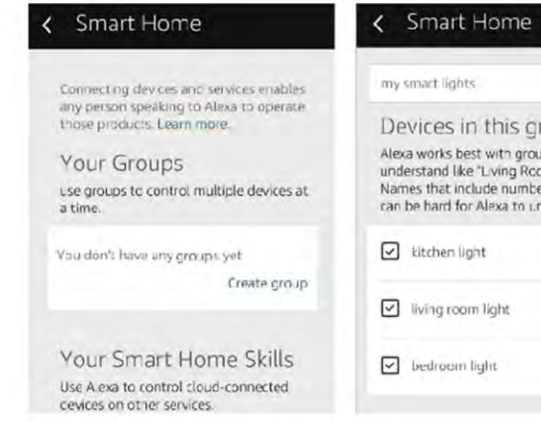
Firstly, you need to say to the Echo: Echo (or Alexa), discover my devices. Echo will start to find the device which is added in Smart Life APP. It will take about 20 seconds, then Echo will tell you the result. You can also click "Discover devices" in Alexa APP, then it will show the devices that have been found successfully.



2. Control Device by Voice

Note: The name of the device must be consistent with the addition of Smart Life APP.

You can also group the Light Switch and give instructions to control them together.

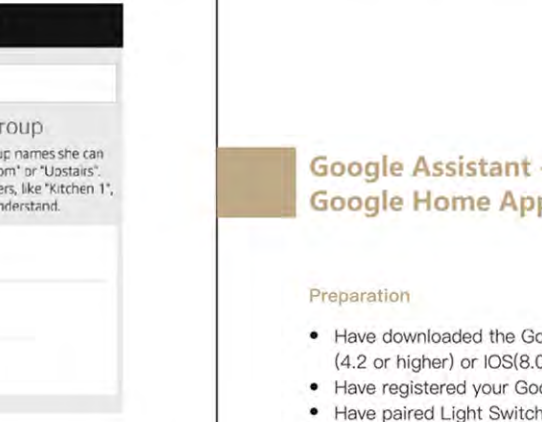


Note:

Echo is one of the wake-up names, which can be any of the three names (Settings): Alexa, Echo, Amazon.

3. Support Skill List

You can control the device by instructions like these: Alexa (or Echo), turn on the Light Switch (Alexa (or Echo), turn off the Light Switch

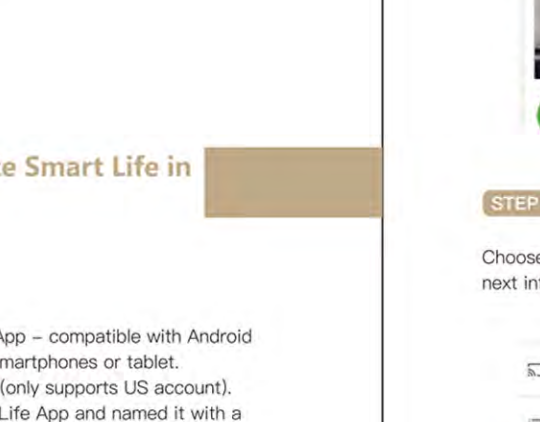


Open Google Home App; tap "≡" on the upper left corner; select "More Settings" to enter the next interface.

Google Assistant - Activate Smart Life in Google Home App

Preparation

- Have downloaded the Google Home App - compatible with Android (4.2 or higher) or IOS9.0 or higher smartphones or tablet.
- Have registered your Google Account(only supports US account).
- Have paired Light Switch with Smart Life APP and named it with a recognizable name.
- Have finished setting up Google Home.

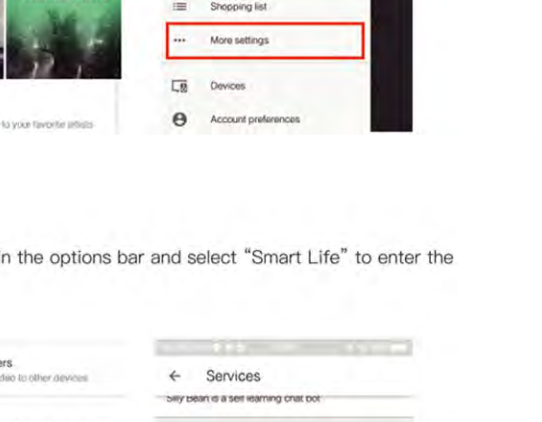


STEP 1

Tap "Link Now", after your Smart Life account has linked to Google Assistant, the smart devices will automatically appear.

STEP 2

Choose "Services" in the options bar and select "Smart Life" to enter the next interface.

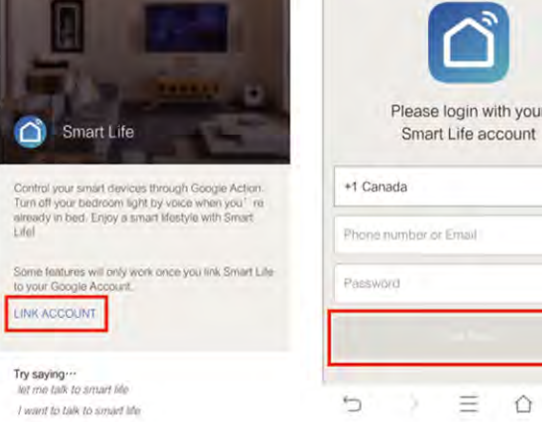


STEP 3

Tap "Link Account", then sign in your Smart Life Account.

STEP 3

Tap "Link Account", then sign in your Smart Life Account.



STEP 4

Tap "Link Now", after your Smart Life account has linked to Google Assistant, the smart devices will automatically appear.

IFTTT - Setup and Usage

Command the Device through Your Voice

After the above operation is successful, you can control the device via Google Home.

Firstly, you need to say "OK Google, talk to Smart Life" to wake up the Smart Life. Then you can control the device by instructions like these:

- Turn on the Light Switch
- Turn off the Light Switch

Note:

After Smart Life has been wakened up, you can say "Cancel" or "Stop" to exit Smart Life or say "Nothing" when you hear "What can I do for you". Then you can say "OK Google, talk to Smart Life" to start voice control.

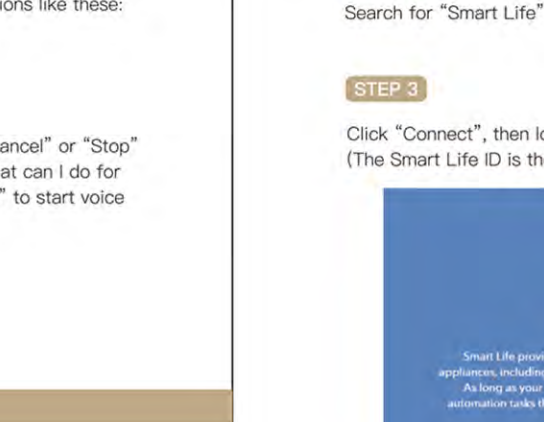


Get Started: How to connect the product to IFTTT?

Visit the IFTTT official website on your PC and sign in with your IFTTT account.

STEP 1

After successfully connecting your IFTTT account to your Smart Life ID. You are ready to enjoy the IFTTT service of the product now.

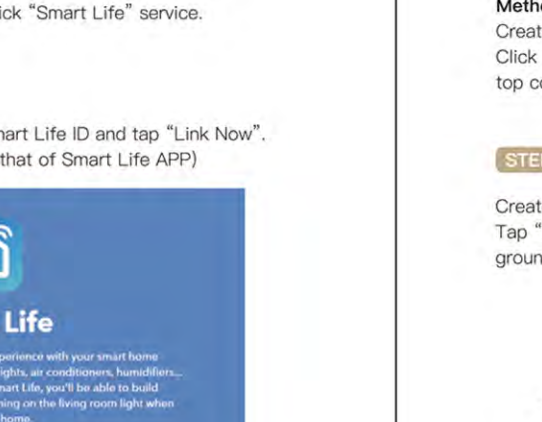


STEP 2

Tap "Link Now", after your Smart Life account has linked to Google Assistant, the smart devices will automatically appear.

STEP 2

Search for "Smart Life", and then click "Smart Life" service.



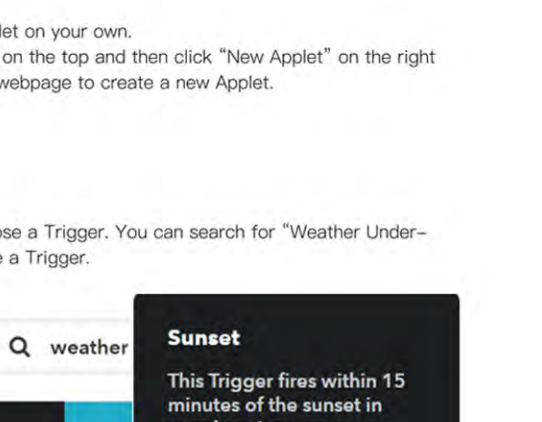
STEP 3

Click "Connect", then log in your Smart Life ID and tap "Link Now". (The Smart Life ID is the same with that of Smart Life APP)

STEP 1

Create a Trigger

Tap "this" to choose a Trigger. You can search for "Weather Underground" to choose a Trigger.

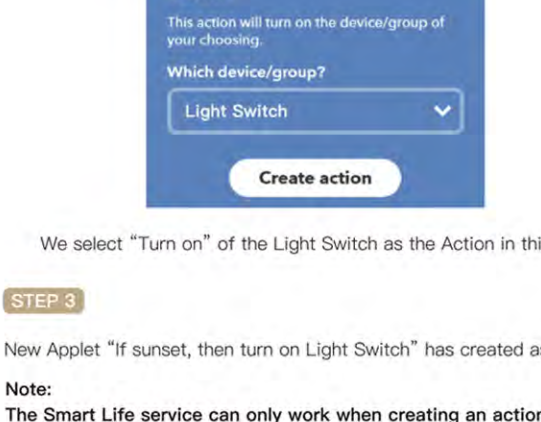


STEP 2

We select "Sunset" as the Trigger.

STEP 3

We select "Turn on" of the Light Switch as the Action in this case.



STEP 4

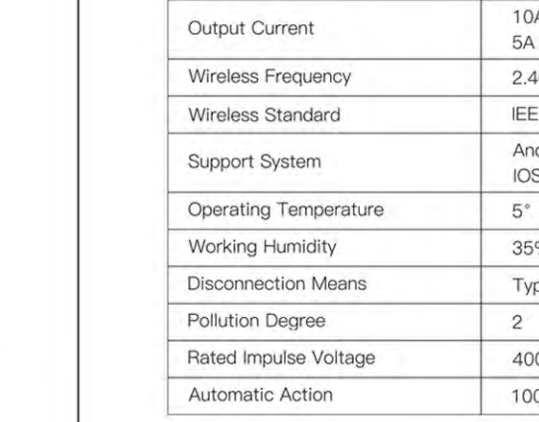
New Applet "if sunset, then turn on Light Switch" has created as a result.

Note:

The Smart Life service can only work when creating an action. You can't use "Smart Life" as a Trigger.

STEP 1

Tap "Link Now", after your Smart Life account has linked to Google Assistant, the smart devices will automatically appear.

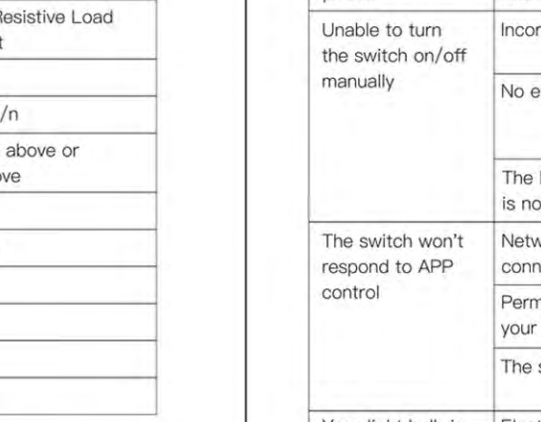


STEP 2

Tap "Link Now", after your Smart Life account has linked to Google Assistant, the smart devices will automatically appear.

STEP 3

Tap "Link Now", after your Smart Life account has linked to Google Assistant, the smart devices will automatically appear.



STEP 4

Tap "Link Now", after your Smart Life account has linked to Google Assistant, the smart devices will automatically appear.

FCC Radiation Exposure Statement:

This equipment complies with FCC radiation exposure limits set forth for an uncontrolled environment. This equipment should be installed and operated with minimum distance 20cm between the radiator & your body.

RSSI(Category I Equipment):

This device complies with Innovation, Science, and Economic Development Canada licence-exempt RSS standard(s). Operation is subject to the following two conditions: (1) this device may not cause interference, and (2) this device must accept any interference received, including interference that may cause undesired operation of the device.

Le présent appareil est conforme aux CNR d'Innovation, Sciences et Développement économique Canada applicables aux appareils radio exempts de licence. L'exploitation est autorisée aux deux conditions suivantes: (1) l'appareil ne doit pas produire de brouillage, et (2) l'utilisateur de l'appareil doit accepter tout brouillage radioélectrique subi, même si le brouillage est susceptible d'en compromettre le fonctionnement.

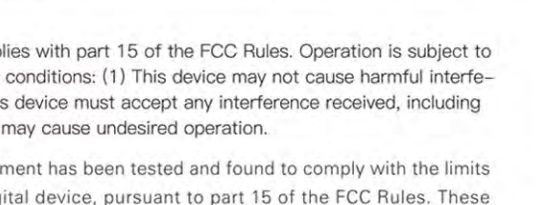
The device is compliance with RF exposure guidelines, users can obtain Canadian information on RF exposure and compliance. The minimum distance from body to use the device is 20cm.

Le présent appareil est conforme

Après examen de ce matériel aux conformités ou aux limites d'intensité de champ RF, les utilisateurs peuvent sur l'exposition aux radiofréquences et la conformité et compliance d'acquiescer les informations correspondantes. La distance minimale du corps à utiliser le dispositif est de 20cm.

Thank You

If you have any questions, please feel free to contact us first. We are always here for you.



Email: service@moeshouse.com