

# SMART WATCH

## Operation Manual

Thanks for purchasing this product.  
Please read this Manual carefully before use.

### Downloading the App

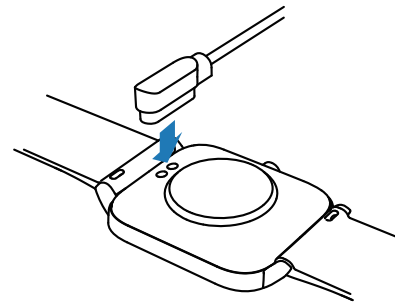
Scan the following QR code, download and install the App.



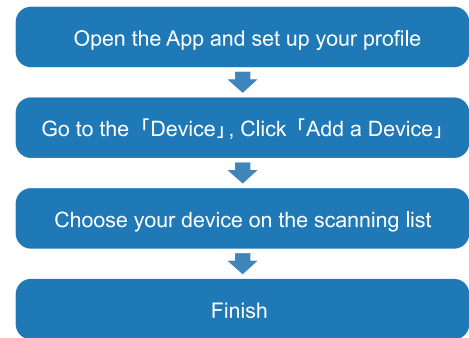
Scan QR Code and Download

### Charging and Active

Charging the device to active before the first time using;  
To charge your device, plug the charging cable into the  
adapter or USB port on your computer.



### Pairing



The MAC address on the "Setting"->"About" page could help  
you identify your device on the scanning list.

### Smart Watch Features

#### Sleep

If you keep wearing Smart Watch in your sleep, it can provide  
the hours slept and quality of sleep stats on both the screen  
and the APP.

NOTE: Sleep stats reset to zero at 8:00 pm.

#### Heart Rate Test

The Smart Watch could record your heart rate all day.  
You also could tap on the page to start measuring heart rate.

#### Sports

Smart Watch automatically tracks Steps taken on the  
screen.

NOTE: Your movement stats reset to zero at midnight.

#### Training

Tap the training icon on the menu to start a new training  
measure recording, there are 123 sport modes to be  
chosen.  
The last training recording will be shown on the training  
page.

#### Blood Pressure Test

Tap on the blood pressure page to start measuring your  
blood pressure.

On the blood pressure page, It can show the blood pressure  
measured data of the last times.

#### SpO2 Test

Tap the SpO2 page to start measuring your SpO2.

On the SpO2 page, It can show the SpO2 measured data of  
the last times.

#### Weather

It could show the weather info of current and tomorrow on  
the weather page.

Weather info is synced after connecting with the APP, it will  
not be updated after a long disconnected.

#### Messages Reminder

The device can sync incoming notifications from Twitter,  
Facebook, Whatsapp, Instagram etc.

Recently 5 messages can be stored.

Note: You can switch on/off the incoming notification in the  
APP.

#### Remote Shutter

After connecting the device, you can remote control the  
camera on your phone.

#### Player Shutter

After connecting the device, you can remote control the music  
player on your phone.

#### Other Features

Other features include stopwatch, alarm, timer, brightness,  
mute on/off, theater mode, factory reset, power off and about.

#### Stop Watch

Tap the start button on stopwatch page to start timing, and  
tap the stop button to stop timing.

#### Silent Alarms

Set up the alarm on the APP, the device will vibrate to remind  
on time.

#### Remind to Drink

The smart watch will remind you "Time to Drink Some  
Water" at the planned drinking time.

Note: You can set the feature in the APP.

#### Remind to Move

The device will vibrate to remind you to make a relax after 1  
hour sitting.

Note: You can switch on/off the feature in the APP.

### Getting to Know Your Device

#### 1.Using in Wet Conditions

Your device is water-resistant, which means it is rain-proof  
and splash-proof and can stand up to even the sweatiest  
workout.

NOTE: Do not swim with your Smart Bracelet. We also  
don't recommend showering with your wristband; though  
the water won't hurt the device, wearing it 24/7 does not  
give your skin a chance to breathe. Whenever you get your  
bracelet wet, dry it thoroughly before putting it back on.

#### 2.Using Quick View

With Quick View you can check the time or the message  
form your phone on your Smart Bracelet without taping.

Just turn your wrist towards you and the time screen will  
appear for a few seconds.

### General Info & Specifications

#### 1.Environmental Conditions

Operating temperature: 14°F to 122°F (-10°C to 50°C)

Non-operating temperature: -4°F to 140°F (-20°C to 60°C)

#### 2.Size

Fits a wrist between 5.5 and 7.7 inches in circumference.

#### 3.Disposal and Recycling

Please kindly be aware that it is the consumer's responsi-  
bility to properly dispose and recycle Smart Bracelet and  
accompanying components. Do not dispose of Smart  
Bracelet with common household waste, the Smart Brace-  
let unit is considered electronic waste and should be  
disposed of at your local electronic equipment collection  
facility.

For more information, please contact your local electronic  
equipment waste management authority or the retailer  
where you bought the product.

#### FCC Warning Statement

Changes or modifications not expressly approved by the party  
responsible for compliance could void the user's authority to  
operate the equipment. This equipment has been tested and  
found to comply with the limits for a Class B digital device,  
pursuant to Part 15 of the FCC Rules. These limits are  
designed to provide reasonable protection against harmful  
interference in a residential installation. This equipment gener-  
ates uses and can radiate radio frequency energy and, if not  
installed and used in accordance with the instructions, may  
cause harmful interference to radio communications. However,  
there is no guarantee that interference will not occur in a partic-  
ular installation. If this equipment does cause harmful interfe-  
rence to radio or television reception, which can be determined  
by turning the equipment off and on, the user is encouraged to  
try to correct the interference by one or more of the following  
measures:

- Reorient or relocate the receiving antenna.
- Increase the separation between the equipment and receiver.
- Connect the equipment into an outlet on a circuit different  
from that to which the receiver is connected.
- Consult the dealer or an experienced radio/TV technician for  
help.