

Setting PIN on Keypad:

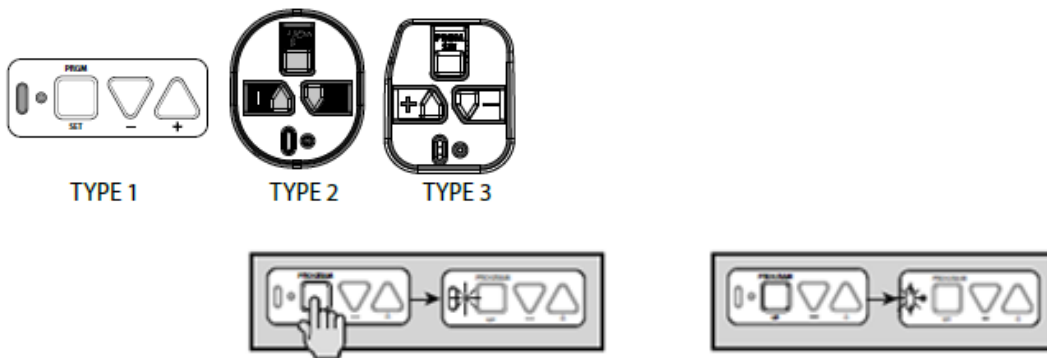
1. Confirm that the keypad backlight is off (do not press any buttons)
2. Press 3 5 7 on the keypad then press the PROGRAM button
3. LED will blink, now enter a unique 3-8 digit PIN number
4. Press the PROGRAM button
5. The keypad will blink twice and shut off confirming successful programming

Keypad to Opener Programming:

1. Enter programming mode on your garage door opener (use the steps below)
2. Confirm that the keypad backlight is off (do not press any buttons)
3. Enter your PIN (from above) into the keypad
4. Press the UP or Down key on the opener 3-4 times until it operates to confirm successful programming

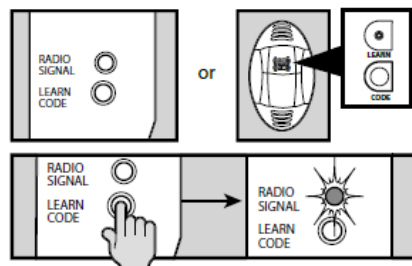
Opener Programming Mode Option 1

- A) Press and hold the program button as shown below until the LED button illuminates, then release
- B) The round LED will turn off and the long LED will begin flashing
- C) Return to step 2 in Keypad to Opener Programming above



Opener Programming Mode Option 2

- A) Press then release the learn code button
- B) The LED will flash indicating programming mode (30 seconds)
- C) Return to step 2 in Keypad to Opener Programming above



⚠ WARNING

In order to prevent possible **SERIOUS INJURY or DEATH** from a moving gate or garage door:

- Keep remote controls out of the reach of children.
- Only use the remote control when the gate/garage door can be seen clearly, is properly adjusted, and there are no obstructions to door travel.
- Keep the gate/garage door in sight until it is completely closed. Do not allow anyone to cross paths with the gate/garage door while moving or operating the remote control.

FCC Statement:

Any Changes or modifications not expressly approved by the party responsible for compliance could void the user's authority to operate the equipment.

This device complies with part 15 of the FCC Rules. Operation is subject to the following two conditions: (1) This device may not cause harmful interference, and (2) This device must accept any interference received, including interference that may cause undesired operation.

Note: This equipment has been tested and found to comply with the limits for a Class B digital device, pursuant to part 15 of the FCC Rules. These limits are designed to provide reasonable protection against harmful interference in a residential installation. This equipment generates uses and can radiate radio frequency energy and, if not installed and used in accordance with the instructions, may cause harmful interference to radio communications. However, there is no guarantee that interference will not occur in a particular installation. If this equipment does cause harmful interference to radio or television reception, which can be determined by turning the equipment off and on, the user is encouraged to try to correct the interference by one or more of the following measures:

- Reorient or relocate the receiving antenna.
- Increase the separation between the equipment and receiver.
- Connect the equipment into an outlet on a circuit different from that to which the receiver is connected.
- Consult the dealer or an experienced radio/TV technician for help.