



Attachment B

Type / Model Name : KAP-R

Product Description : Kion Access Permission (access device)

Applicant : TQ-Systems GmbH

Address : Gut Delling

Mühlstrasse 2

82229 Seefeld, Germany

Manufacturer : TQ-Systems GmbH

Address : Gut Delling

Mühlstrasse 2

82229 Seefeld, Germany

Test Report No. : 80153542-03 to 80153542-04; 80153542-07 to 80153542-08	05. October 2023 Date of issue
---	-----------------------------------

Contents

1	<u>Test setup Photos</u>	3
1.1	CPR 1	3
1.2	SER 1	4
1.3	SER 2	5
1.4	FE	8
1.5	MB	8
1.6	RF	9

1 Test setup Photos

Depending on the operation mode tested, the appropriate RFID card (13.56 MHz or 125 kHz) was used. In addition, the correct command [r8 or r7] was set in the software.

1.1 CPR 1

Test setup: tested EUT operation mode 13.56 MHz



Test location: OATS1

1.2 SER 1

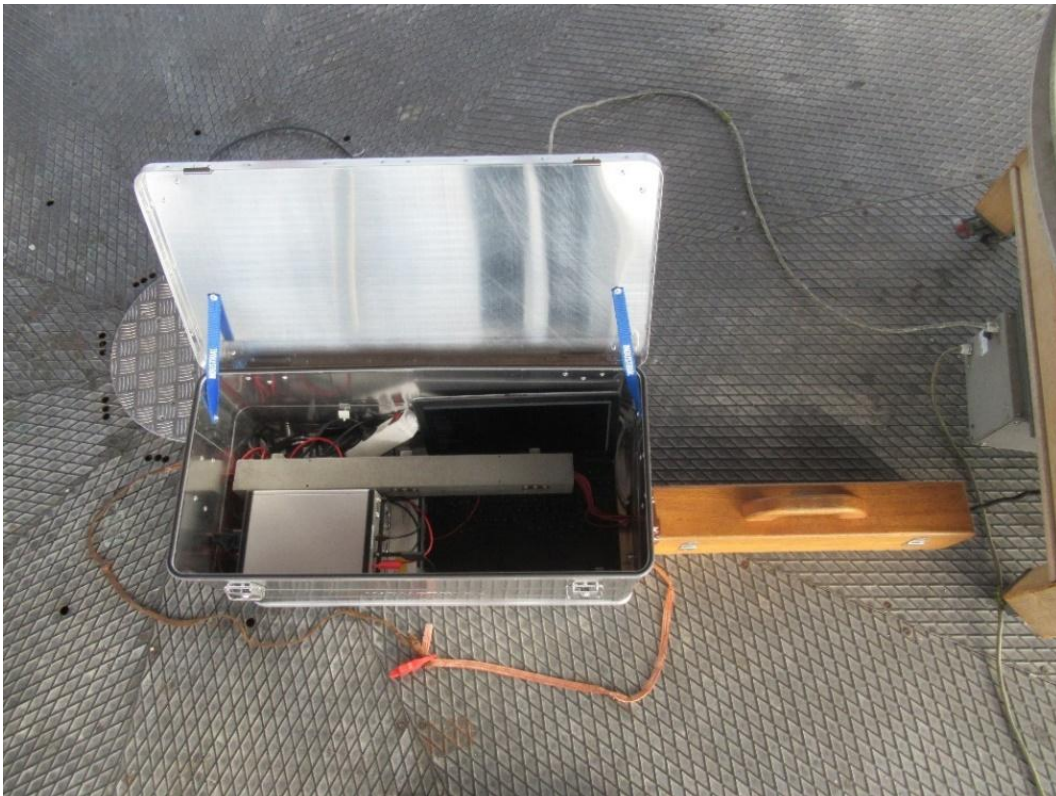
< 30MHz:

Test setup: tested EUT operation mode 13.56 MHz and operation mode 125 kHz



Test location: OATS1

Peripheral devices:

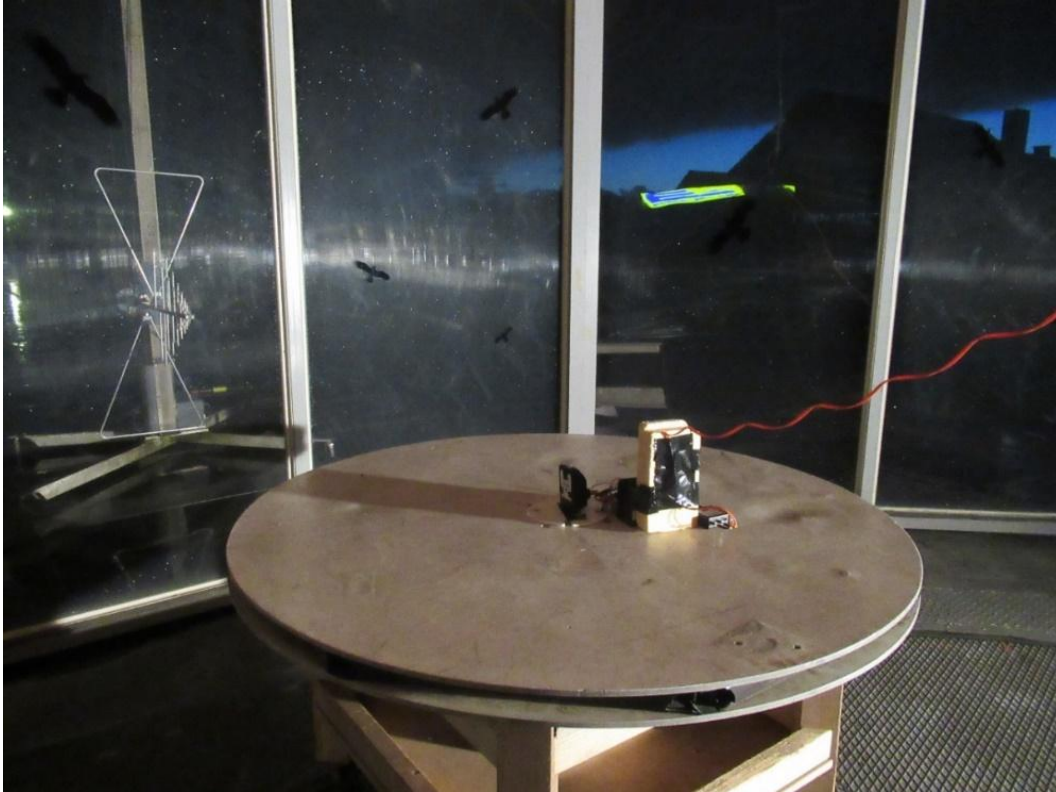


Power supply, Laptop and test boxes in shielded box, additional two ferrite-clamps were used

1.3 SER 2

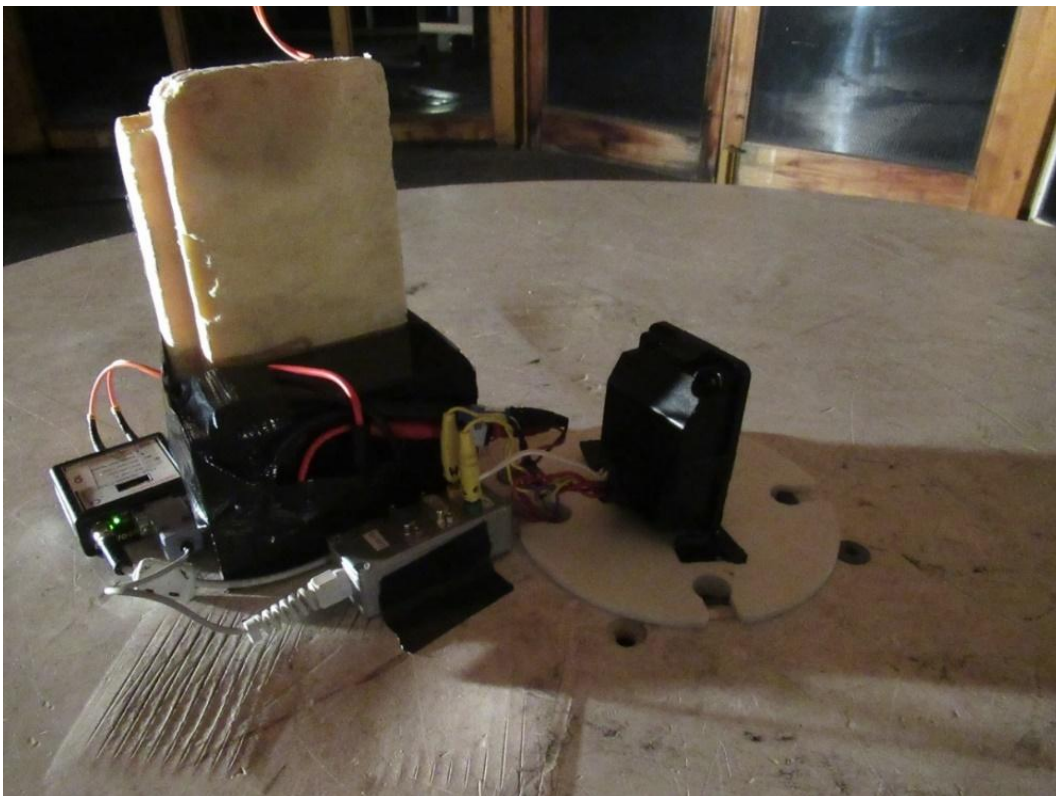
30 MHz < f < 1 GHz:

Test setup: tested EUT operation mode 13.56 MHz



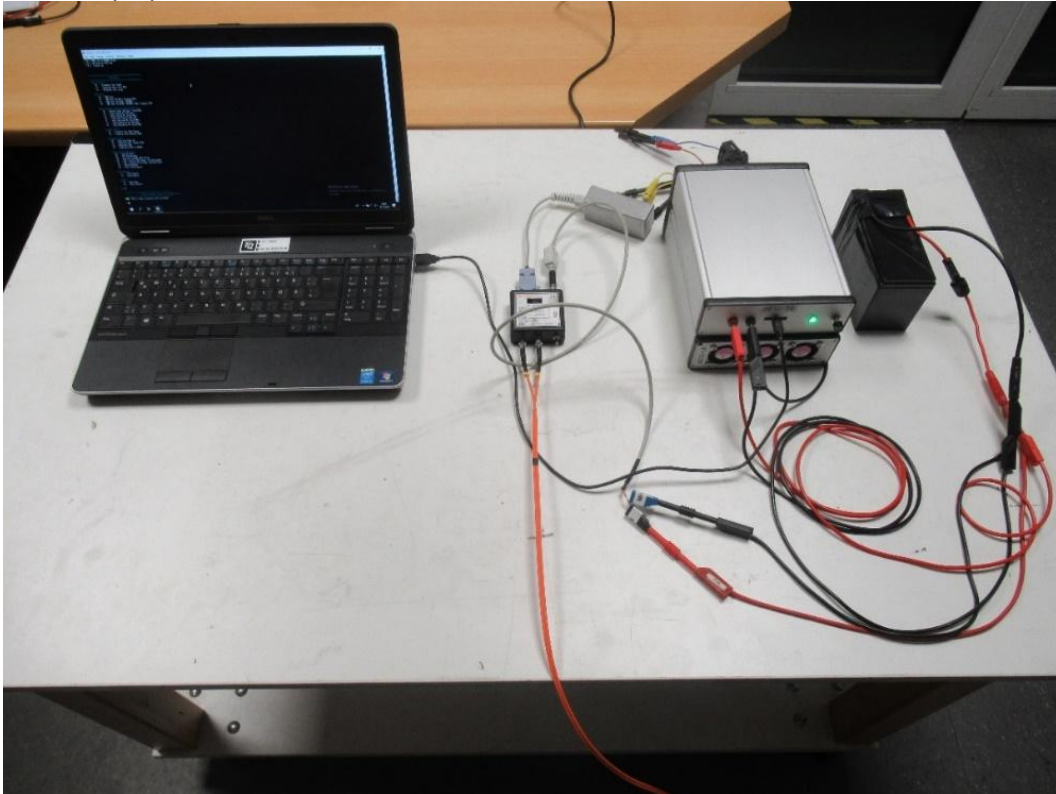
Test location: OATS1

Detail:



Connection EUT – test boxes over optoCAN, supply EUT with battery (short supply line)

Peripheral devices: Laptop and test boxes outside OATS1



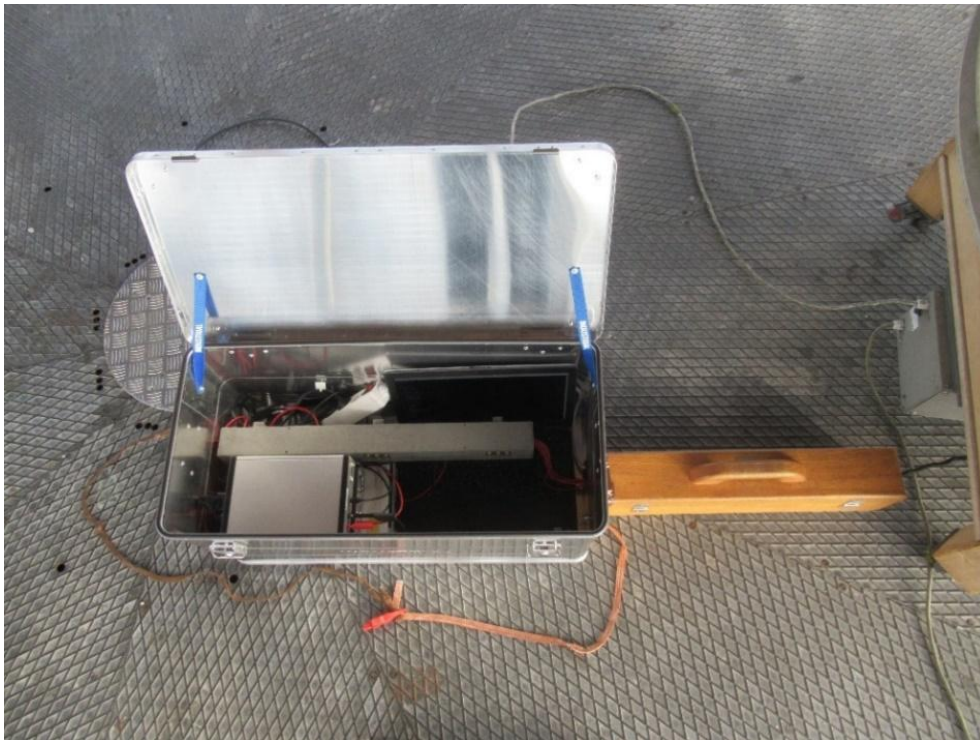
Laptop + Test boxes, supply test boxes with battery

Test setup: tested EUT operation mode 125 kHz



Test location: OATS1

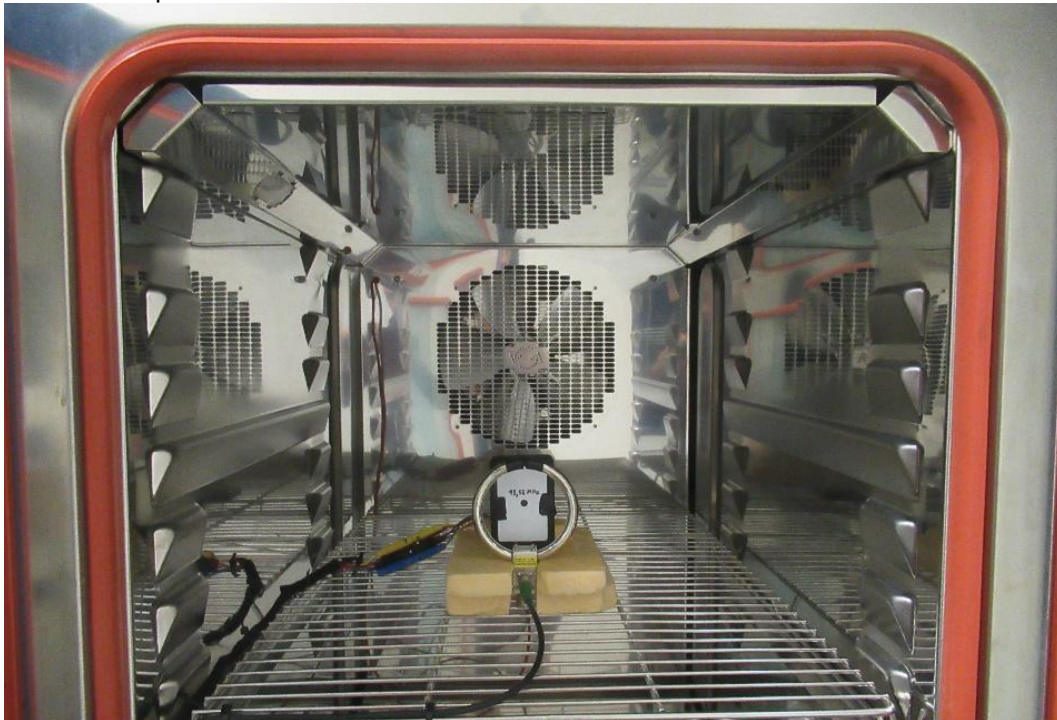
Peripheral devices:



Power supply, Laptop and test boxes in shielded box, additional two ferrite-clamps were used

1.4 FE

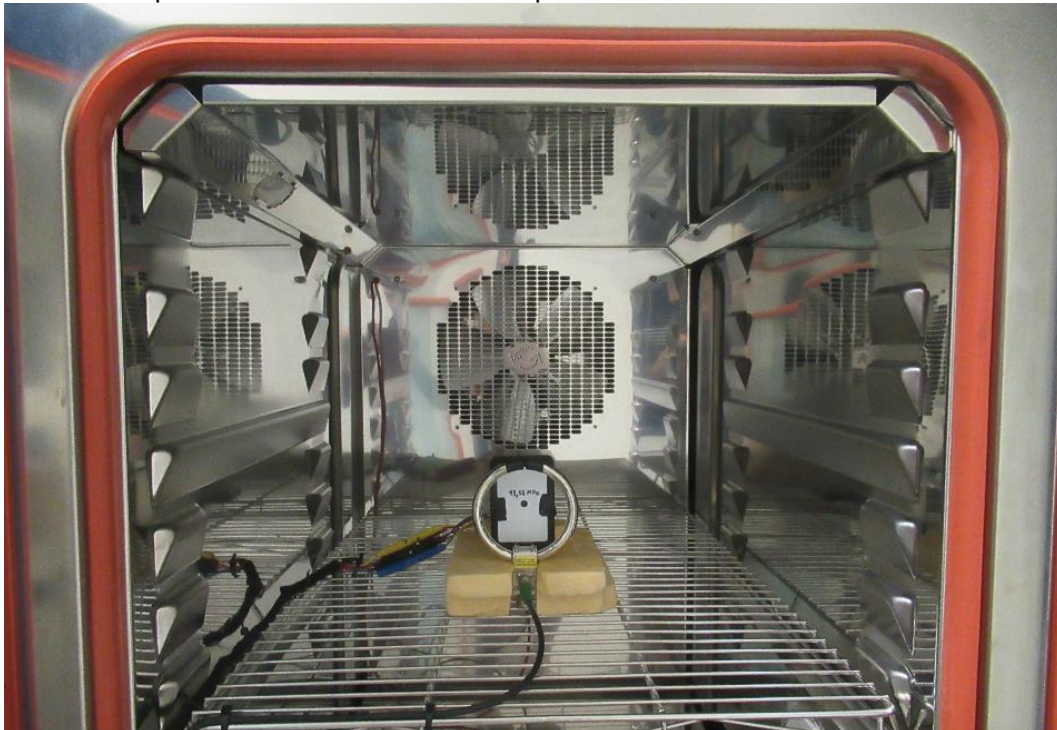
Test setup: tested EUT operation mode 13.56 MHz



Test location: AREA4

1.5 MB

Test setup: tested EUT operation mode 13.56 MHz and operation mode 125 kHz



Test location: AREA4

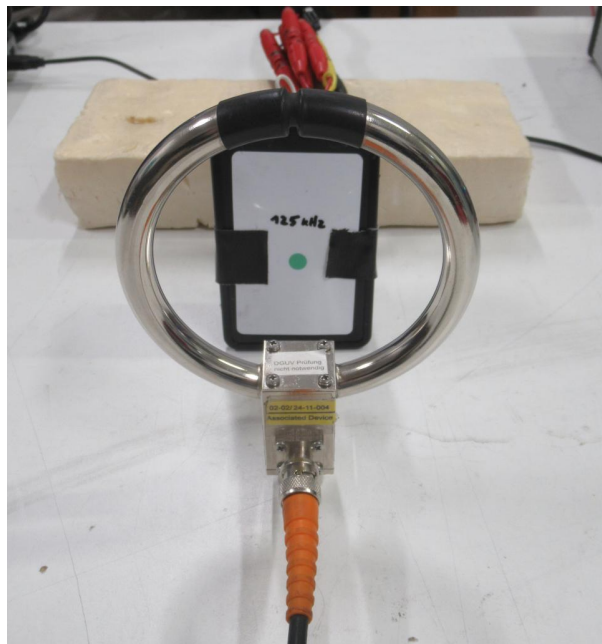
1.6 RF

Test setup: tested EUT operation mode 13.56 MHz and operation mode 125 kHz

Location of measurement points:



Example:



Dimensions of the EUT:

- Length = 10.5 cm, Width = 7 cm, Height = 5 cm

Measurement points:

- Each position was measured in a distance of 0 cm

- End of attachment_B -