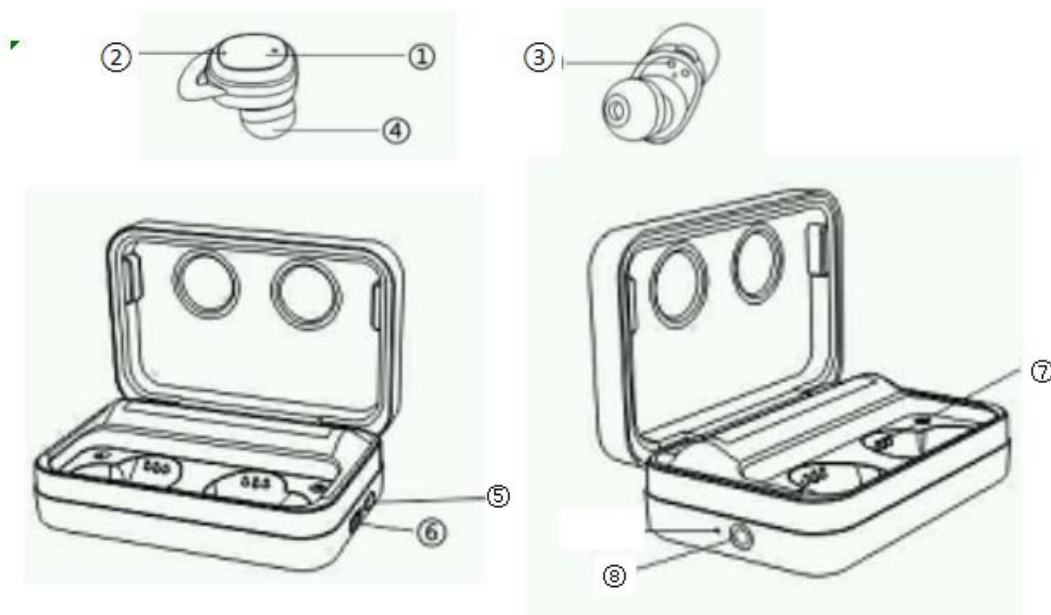


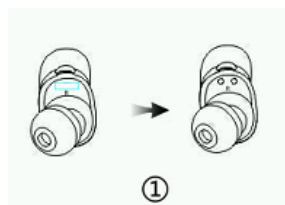
NEM Plus user manual

NEM-002

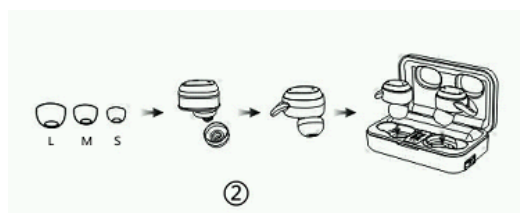


- ①touch control panel ②microphone ③earphones charging contacts ④ear cap
⑤power button ⑥type-c input port ⑦charging case contacts ⑧wired headphone jack

First use instructions



①Please remove the protective tape before use



② Use the right size which is most

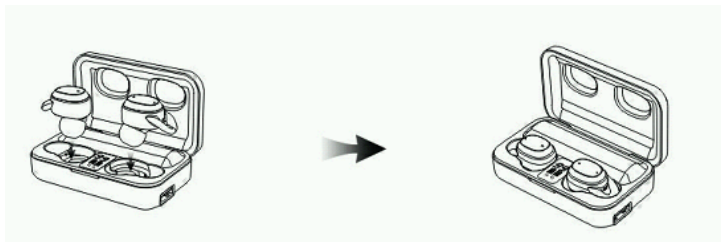
comfortable to you and put the earphones into the charging case

Tip: When using it for the first time (or not using it for a long time), please make sure to charge the earphones and charging box before use.

Charging case and earphone charging

②Charging for earphones

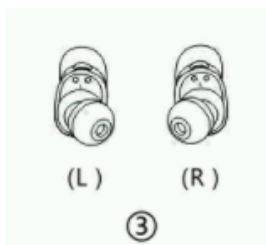
Make sure the charging case with enough battery power, then put the earphones into the charging case, they will enter into the charging mode and the light will be on after about 5s.



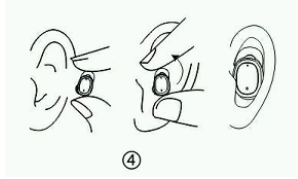
LED indicator display status:

- Charging (a long red light of earphones when charging)
- Full charged (lights off) , the charging case will power off automatically.

Wearing Sketches



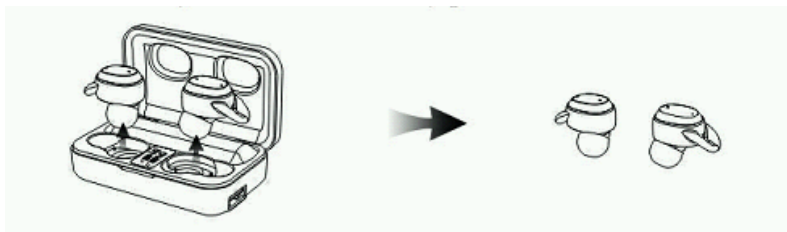
①Please wear the earphone marked "L" on the left ear and the one marked "R" on the right ear.



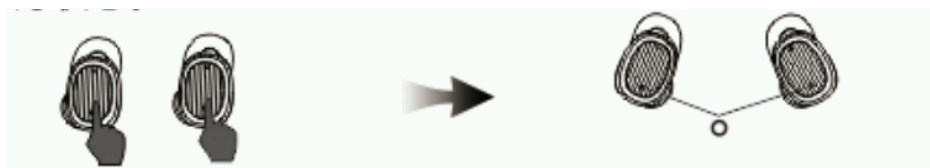
②Put earphones into auditory canal,turn the earphones to a firm and comfortable position.

Power on

1.Auto power on: Take out the earphones from the charging case, the earphone will automatically power on.



2.Manual power on: If earphone is power off, and the charging case is not available, please tap earphones touch control for 2-3 seconds in the meantime until the blue lights



fl Long press 2-3s to power on

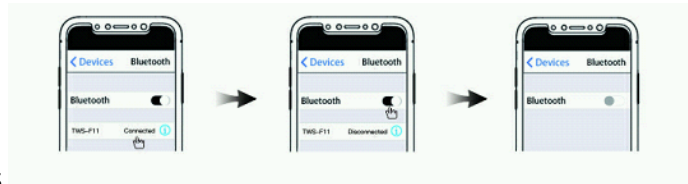
The earphone flashes blue light

Power off:

1) Put the earphones into the charging case , they will enter into charging mode and power off automatically.



2) If the charging case is not available, just disconnect the Bluetooth connection between your cell phone and earphones, the earphones will power off automatically after 10 minutes.



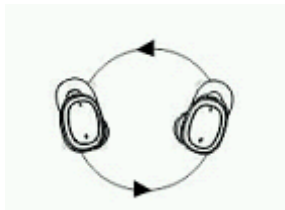
automatically after 10 minutes.

Pairing

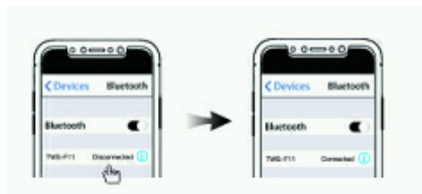
① Earphones pair connection



a. Take two earphones out of the charging case



b. The two earphones will power on and connect to each other automatically



c. Search the Bluetooth name " NEM Plus Earphones-L" on the phone and click it to connect

Tips:

1. The red & blue lights flash alternatively, waiting for connect with cellphone bluetooth.
2. The blue light flashes every 5 seconds, connected with cellphone.
3. While using earphones again, take the L/R earphones out of the charging case

and the L/R earphones will power on and connect to each other automatically, also the master earphone will connect to the bluetooth device automatically. (The last connected Bluetooth device.

②Single earphone connection

a.Take any earphone out of the charging case and the earphone light enters the red & blue flash after A few seconds

b.Search the Bluetooth name “NEM Plus Earphones-L” on the phone and click it to connect

Tips:

1. Left and right earphone can be used separately.
2. If you want to use both earphones when the earphone is in single connection mode, just need take the other earphone out of the charging case, the slave earphone will connect to the master earphone automatically.

Functional operation

Siri Active: After connect with cellphone, press the touch pad control of left or right earphone for 2 seconds and release to activate/close Siri. (In playing music, it can be activate while pause state)

Incoming call prompt/number report: Phone ring tone and sound can be heard from Both earphones.

Answer the phone:When calls come in, double-click either of earphones. (Sounds

can be heard from both earphones.)

Hang up the phone: During the call, double-click either of earphones.

Reject a call: When calls come in, double-click the either of earphones for 2 seconds and release.

Music play: During playing music, double-click the left earphone for previous track; double-click the right earphone for next track; single-click the either of earphones for pause or play music.

Decrease the volume(+): Long touch the left earphone over 3 seconds to turn the volume down.

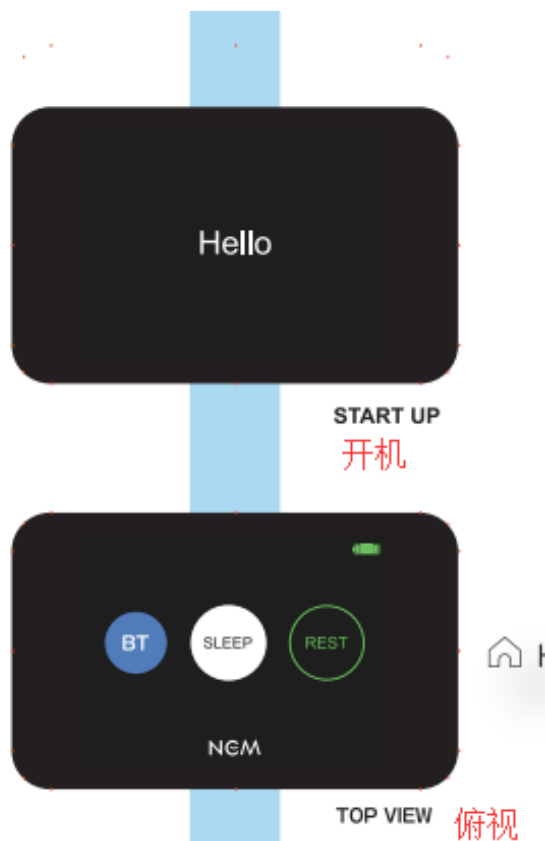
Increase the volume(-): Long touch the right earphone over 3 seconds to turn the volume up.

Warm Tips :

1. The volume of the earphones is not synchronized with the volume of the phone. If the volume of the earphone cannot reach the desired effect, the volume can be adjusted by the phone.
2. Please use the earphone in reasonable volume and time, otherwise it will damage your hearing if you listen the music for long time in high volume.
3. In the Mono mode, earphones cannot adjust the volume. You can adjusted it by phone.

Charge case:

1、 **Power on:** Press the button of the right side for 2S.



2、 **Power-off**

Manual power-off : Press the button of the right side for 2S.

Automatic power-off : It will automatic power off after 10 minutes music paused on conditional that not touch the screen.

3、 **Headphone mode :**

Wired mode : After inserting the wired earphone into the headphone jack of the left side, turn on the wired headphone mode.

Wireless mode: Turn on the BT, and connect wireless headphone.

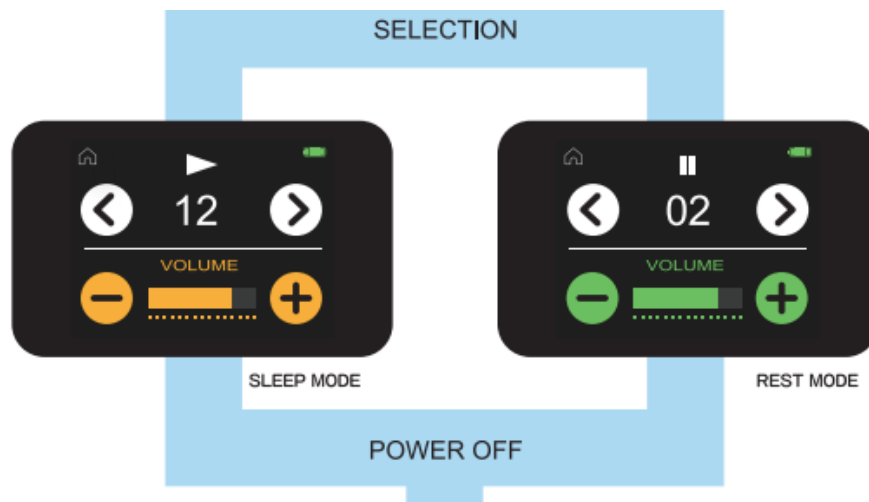


4、 Selection :

BT mode: 1)Bluetooth on/off;

2)Search for device:Search the Bluetooth name " NEM Plus Earphones-L" and click it to connect ;

3) Device list.



SLEEP mode: There are 20 songs , each song for 1 hour .

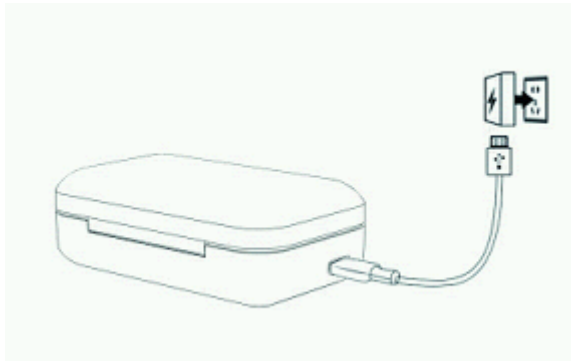
REST mode: there are 10 songs, each song for 20 minutes .

(note: When wired or wireless headphones are connected, the music can only be played.)

5、 The home button in the upper left corner of the screen returns to the previous layer, the middle is the pause button, and the battery level is displayed in the upper right corner.

6、 Charging for the charging case

Use the charging cable of the packing box, connecting with the power adaptor to charge.



LED indicator display status:

- Charging (the battery level is displayed in the upper right corner)

Note: please charge for the case with DC5V/1A charger or Computer USB (Must choose the formal charger certified by formal factory); as the charging and discharging of the earphones increases, the battery performance will decrease, which is normal for all rechargeable batteries. (Don' t press the contact of the spring pin hard to avoid improper use.)

7、 **Stand-by mode:** Do not touch the screen for 90 seconds, the case will enter stand-by mode; And touch again the screen will brightened.

NOTE:

This equipment has been tested and found to comply with the limits for a Class B digital device, pursuant to part 15 of the FCC Rules. These limits are designed to provide reasonable protection against harmful interference in a residential installation. This equipment generates uses and can radiate radio frequency energy and, if not installed and used in accordance with the instructions, may cause harmful interference to radio communications. However, there is no guarantee that interference will not occur in a particular installation. If this equipment does cause harmful interference to radio or television reception, which can be determined by turning the equipment off and on, the user is encouraged to try to correct the interference by one or more of the following measures:

- Reorient or relocate the receiving antenna.
- Increase the separation between the equipment and receiver.
- Connect the equipment into an outlet on a circuit different from that to which the receiver is connected.
- Consult the dealer or an experienced radio/TV technician for help.

Changes or modifications not expressly approved by the party responsible for compliance could void the user's authority to operate the equipment.

This device complies with Part 15 of the FCC Rules. Operation is subject to the following two conditions:

- (1) this device may not cause harmful interference, and
- (2) this device must accept any interference received, including interference that may cause undesired operation.