

FCC TEST REPORT

Client Name : TRA COMPANY LTD

Address : 6-6 Kitahama-higashi Chuo-ku Osaka-shi Osaka Japan

Product Name : Wireless Earphones

Date : Nov. 30, 2020



Shenzhen Anbotek Compliance Laboratory Limited

Contents

1. General Information.....	5
1.1. Client Information.....	5
1.2. Description of Device (EUT).....	5
1.3. Auxiliary Equipment Used During Test.....	6
1.4. Description of Test Modes.....	6
1.5. List of channels.....	6
1.6. Description Of Test Setup.....	7
1.7. Test Equipment List.....	8
1.8. Measurement Uncertainty.....	9
1.9. Description of Test Facility.....	9
2. Summary of Test Results.....	10
3. Conducted Emission Test.....	11
3.1. Test Standard and Limit.....	11
3.2. Test Setup.....	11
3.3. Test Procedure.....	11
3.4. Test Data.....	11
4. Radiation Spurious Emission and Band Edge.....	18
4.1. Test Standard and Limit.....	18
4.2. Test Setup.....	18
4.3. Test Procedure.....	19
4.4. Test Data.....	20
5. Maximum Peak Output Power Test.....	28
5.1. Test Standard and Limit.....	28
5.2. Test Setup.....	28
5.3. Test Procedure.....	28
5.4. Test Data.....	28
6. 6DB Occupy Bandwidth Test.....	31
6.1. Test Standard and Limit.....	31
6.2. Test Setup.....	31
6.3. Test Procedure.....	31
6.4. Test Data.....	31
7. Power Spectral Density Test.....	34
7.1. Test Standard and Limit.....	34
7.2. Test Setup.....	34
7.3. Test Procedure.....	34
7.4. Test Data.....	34
8. 100kHz Bandwidth of Frequency Band Edge Requirement.....	37
8.1. Test Standard and Limit.....	37
8.2. Test Setup.....	37

8.3. Test Procedure..... 37

8.4. Test Data..... 37

9. Antenna Requirement..... 41

9.1. Test Standard and Requirement..... 41

9.2. Antenna Connected Construction..... 41

APPENDIX I -- TEST SETUP PHOTOGRAPH..... 42

APPENDIX II -- EXTERNAL PHOTOGRAPH..... 44

APPENDIX III -- INTERNAL PHOTOGRAPH..... 51

TEST REPORT

Applicant : TRA COMPANY LTD
Manufacturer : TRA COMPANY LTD
Product Name : Wireless Earphones
Model No. : CHE-631, KOJ-601
Trade Mark : Cheero, Kojigen
Charging Case input: DC 5V, 0.3A, 280mAh (with DC 3.7V, 280mAh battery
Rating(s) : inside)
Single earphone input: DC 5V, 0.03A (with DC 3.7V, 30mAh battery inside)

Test Standard(s) : FCC Part15 Subpart C, Section 15.247

Test Method(s) : ANSI C63.10: 2013, KDB558074 D01 DTS Meas Guidance v05r02

The device described above is tested by Shenzhen Anbotek Compliance Laboratory Limited to determine the maximum emission levels emanating from the device and the severe levels of the device can endure and its performance criterion. The measurement results are contained in this test report and Shenzhen Anbotek Compliance Laboratory Limited is assumed full of responsibility for the accuracy and completeness of these measurements. Also, this report shows that the EUT (Equipment Under Test) is technically compliant with the FCC Part 15 Subpart C requirements.

This report applies to above tested sample only and shall not be reproduced in part without written approval of Shenzhen Anbotek Compliance Laboratory Limited.

Date of receipt

Nov. 04, 2020

Date of Test

Nov. 04~23, 2020

Prepared By

Yilia Zhong

(Engineer / Yilia Zhong)

Reviewer

Bibo Zhang

(Supervisor / Bibo Zhang)

Approved & Authorized Signer

Kingkong Jin

(Manager / Kingkong Jin)

1. General Information

1.1. Client Information

Applicant	:	TRA COMPANY LTD
Address	:	6-6 Kitahama-higashi Chuo-ku Osaka-shi Osaka Japan
Manufacturer	:	TRA COMPANY LTD
Address	:	6-6 Kitahama-higashi Chuo-ku Osaka-shi Osaka Japan
Factory	:	Shenzhen Long Fu Xiang Technology Co. Ltd
Address	:	No.205, Xingye 2nd Road, Fenghuang Village, Fuyong Town, Bao'an District, Shenzhen, China

1.2. Description of Device (EUT)

Product Name	:	Wireless Earphones	
Model No.	:	CHE-631, KOJ-601 (Note: All samples are the same except the model number and appearance color, so we prepare "CHE-631" for test only.)	
Trade Mark	:	Cheero, kojigen	
Test Power Supply	:	AC 120V, 60Hz/ AC 240V, 60Hz for adapter/ DC 3.7V Battery inside	
Test Sample No.	:	1-2-1(Normal Sample), 1-2-2(Engineering Sample)	
Product Description	:	Operation Frequency:	2402MHz~2480MHz
	:	Transfer Rate:	BDR+EDR: 1/2 Mbits/s BLE: 1 Mbits/s
	:	Number of Channel:	EDR+EDR: 79 Channels BLE: 40 Channels
	:	Modulation Type:	EDR+EDR: GFSK, π /4-DQPSK BLE: GFSK
	:	Antenna Type:	Ceramic Antenna
	:	Antenna Gain(Peak):	3.19 dBi

Remark: 1) For a more detailed features description, please refer to the manufacturer's specifications or the User's Manual.
 2) This report is for BLE only.
 3) The EUT consists of two parts, the left and right earphone, both have been tested and only the test data of right earphone recorded in this report.

1.3. Auxiliary Equipment Used During Test

Adapter	:	Manufacturer: ZTE
		M/N: STC-A2050I1000USBA-C S/N: 201202102100876 Input: 100-240V~ 50/60Hz, 0.3A Output: DC 5V, 1000mA

1.4. Description of Test Modes

To investigate the maximum EMI emission characteristics generates from EUT, the test system was pre-scanning tested base on the consideration of following EUT operation mode or test configuration mode which possible have effect on EMI emission level. Each of these EUT operation mode(s) or test configuration mode(s) mentioned above was evaluated respectively.

Pretest Mode	Description	
Mode 1	CH00	TX+ Charging Mode/TX Only
Mode 2	CH19	
Mode 3	CH39	

Note:

- (1) The measurements are performed at the highest, middle, lowest available channels.
- (2)The data rate was set in 1Mbps for radiated emission due to the highest RF output power.

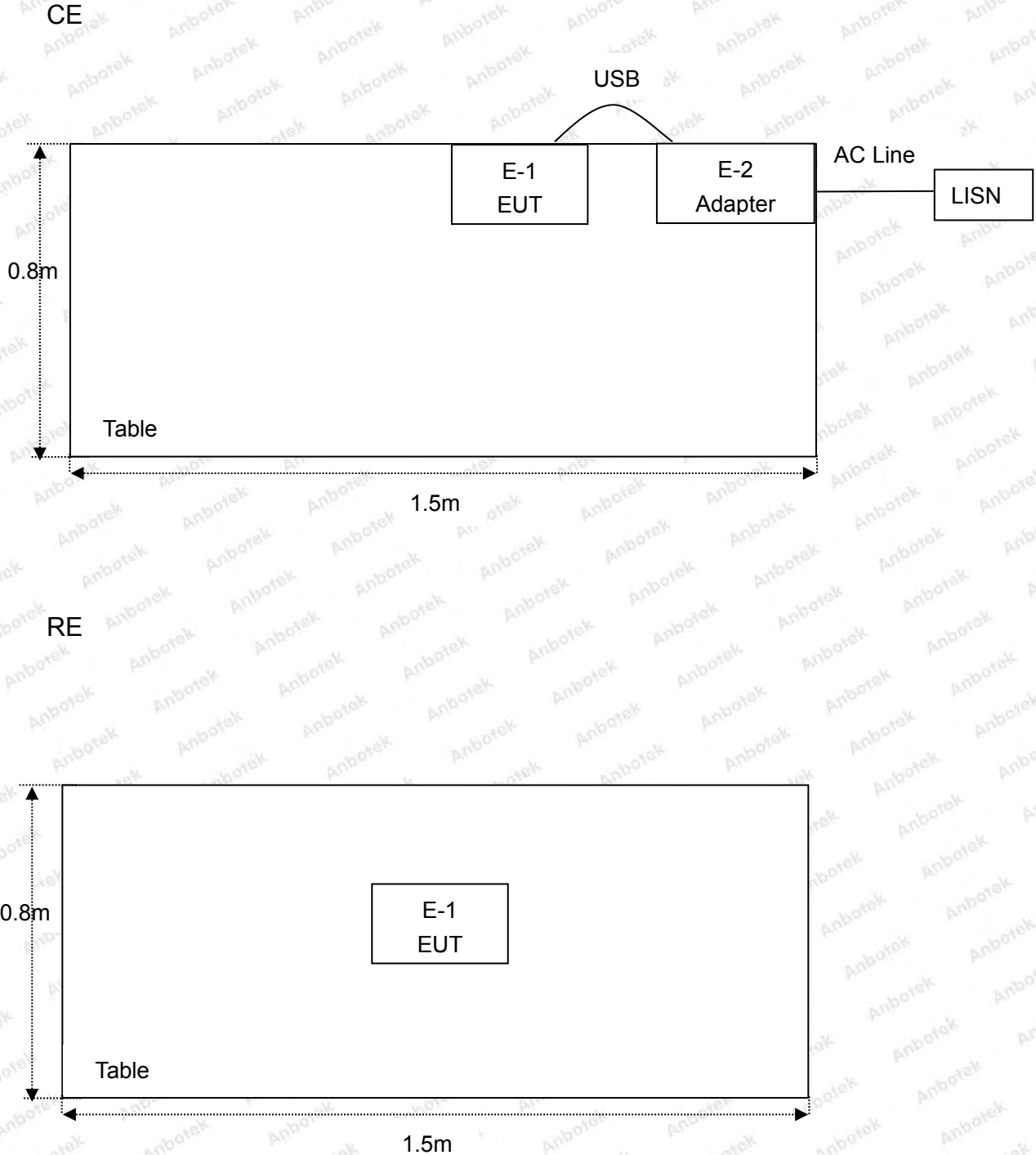
1.5. List of channels

Channel	Freq. (MHz)	Channel	Freq. (MHz)	Channel	Freq. (MHz)	Channel	Freq. (MHz)	Channel	Freq. (MHz)
00	2402	09	2420	18	2438	27	2456	36	2474
01	2404	10	2422	19	2440	28	2458	37	2476
02	2406	11	2424	20	2442	29	2460	38	2478
03	2408	12	2426	21	2444	30	2462	39	2480
04	2410	13	2428	22	2446	31	2464		
05	2412	14	2430	23	2448	32	2466		
06	2414	15	2432	24	2450	33	2468		
07	2416	16	2434	25	2452	34	2470		
08	2418	17	2436	26	2454	35	2472		

Note:

- 1. The engineering test program was provided and the EUT was programmed to be in continuously transmitting mode.
- 2. EUT built-in battery-powered, fully-charged battery use of the test battery.

1.6. Description Of Test Setup



1.7. Test Equipment List

Item	Equipment	Manufacturer	Model No.	Serial No.	Last Cal.	Cal. Interval
1.	L.I.S.N. Artificial Mains Network	Rohde & Schwarz	ENV216	100055	Oct. 26, 2020	1 Year
2.	EMI Test Receiver	Rohde & Schwarz	ESCI	100627	Oct. 26, 2020	1 Year
3.	EMI Test Receiver	Rohde & Schwarz	ESR26	101481	Oct. 26, 2020	1 Year
4.	RF Switching Unit	Compliance Direction	RSU-M2	38303	Oct. 26, 2020	1 Year
5.	MAX Spectrum Analysis	Agilent	N9020A	MY51170037	Oct. 26, 2020	1 Year
6.	Preamplifier	SKET Electronic	BK1G18G30 D	KD17503	Oct. 26, 2020	1 Year
7.	Double Ridged Horn Antenna	Instruments corporation	GTH-0118	351600	Nov. 02, 2020	2 Year
8.	Bilog Broadband Antenna	Schwarzbeck	VULB9163	VULB 9163-289	Nov. 02, 2020	2 Year
9.	Loop Antenna	Schwarzbeck	FMZB1519B	00053	Nov. 02, 2020	2 Year
10.	Horn Antenna	A-INFO	LB-180400-K F	J211060628	Nov. 02, 2020	2 Year
11.	Pre-amplifier	SONOMA	310N	186860	Oct. 26, 2020	1 Year
12.	EMI Test Software EZ-EMC	SHURPLE	N/A	N/A	N/A	N/A
13.	RF Test Control System	YIHENG	YH3000	2017430	Oct. 26, 2020	1 Year
14.	Power Sensor	DAER	RPR3006W	15I00041SN045	Oct. 26, 2020	1 Year
15.	Power Sensor	DAER	RPR3006W	15I00041SN046	Oct. 26, 2020	1 Year
16.	MXA Spectrum Analysis	Agilent	N9020A	MY51170037	Oct. 26, 2020	1 Year
17.	MXG RF Vector Signal Generator	Agilent	N5182A	MY48180656	Oct. 26, 2020	1 Year
18.	Signal Generator	Agilent	E4421B	MY41000743	Oct. 26, 2020	1 Year
19.	DC Power Supply	IVYTECH	IV3605	1804D360510	Oct. 26, 2020	1 Year
20.	Constant Temperature Humidity Chamber	ZHONGJIAN	ZJ-KHWS80 B	N/A	Oct. 26, 2020	1 Year

1.8. Measurement Uncertainty

Radiation Uncertainty	:	Ur = 3.9 dB (Horizontal)
		Ur = 3.8 dB (Vertical)
Conduction Uncertainty	:	Uc = 3.4 dB

1.9. Description of Test Facility

The test facility is recognized, certified, or accredited by the following organizations:

FCC-Registration No.: 184111

Shenzhen Anbotek Compliance Laboratory Limited, EMC Laboratory has been registered and fully described in a report filed with the (FCC) Federal Communications Commission. The acceptance letter from the FCC is maintained in our files. Registration No. 184111, September 30, 2020.

ISED-Registration No.: 8058A

Shenzhen Anbotek Compliance Laboratory Limited, EMC Laboratory has been registered and fully described in a report filed with the (ISED) Innovation, Science and Economic Development Canada. The acceptance letter from the ISED is maintained in our files. Registration 8058A, September 30, 2020.

Test Location

Shenzhen Anbotek Compliance Laboratory Limited.

1/F, Building D, Sogood Science and Technology Park, Sanwei community, Hangcheng Street, Bao'an District, Shenzhen, Guangdong, China.518102

2. Summary of Test Results

Standard Section	Test Item	Result
15.203/15.247(c)	Antenna Requirement	PASS
15.207	Conducted Emission	PASS
15.205/15.209	Spurious Emission	PASS
15.247(b)(3)	Conducted Peak Output Power	PASS
15.247(a)(2)	6dB Occupied Bandwidth	PASS
15.247(e)	Power Spectral Density	PASS
15.247(d)	Band Edge	PASS
Remark: "N/A" is an abbreviation for Not Applicable.		

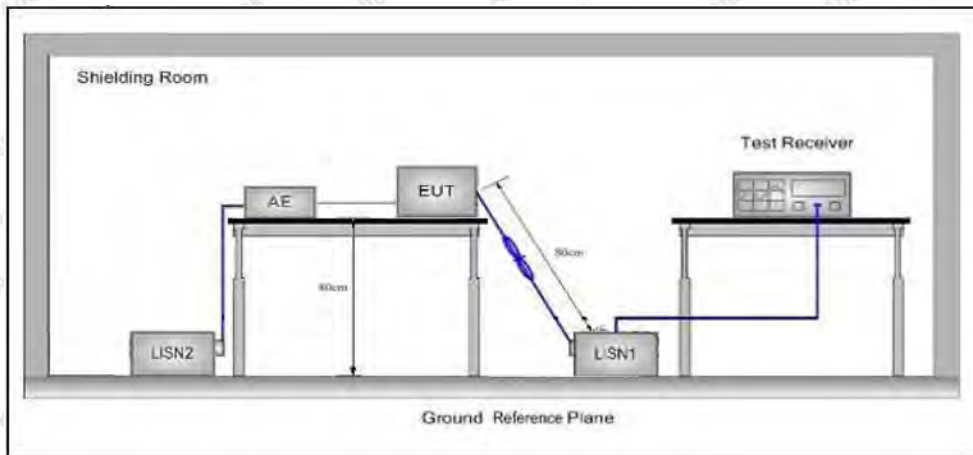
3. Conducted Emission Test

3.1. Test Standard and Limit

Test Standard	FCC Part15 Section 15.207		
Test Limit	Frequency	Maximum RF Line Voltage (dBuV)	
		Quasi-peak Level	Average Level
	150kHz~500kHz	66 ~ 56 *	56 ~ 46 *
	500kHz~5MHz	56	46
5MHz~30MHz	60	50	

Remark: (1) *Decreasing linearly with logarithm of the frequency.
(2) The lower limit shall apply at the transition frequency.

3.2. Test Setup



3.3. Test Procedure

The EUT system is connected to the power mains through a line impedance stabilization network (L.I.S.N.). This provides a 50ohm coupling impedance for the EUT system. Please refer the block diagram of the test setup and photographs. Both sides of AC line are checked to find out the maximum conducted emission. In order to find the maximum emission levels, the relative positions of equipment and all of the interface cables shall be changed according to FCC ANSI C63.10-2013 on Conducted Emission Measurement.

The bandwidth of test receiver (ESCI) set at 9kHz.

The frequency range from 150kHz to 30MHz is checked.

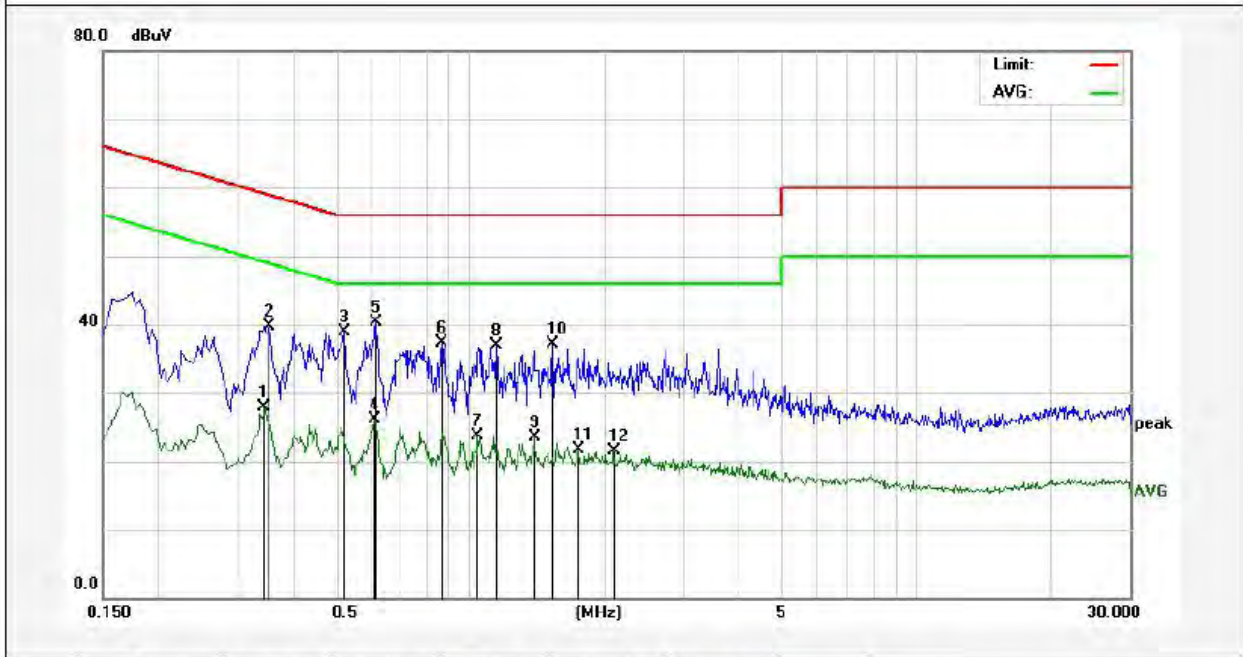
3.4. Test Data

Please to see the following pages.

During the test, pre-scan all the modes, and found Low channel(TX+Charging) which is the worst case, only the worst case is recorded in the report.

Conducted Emission Test Data

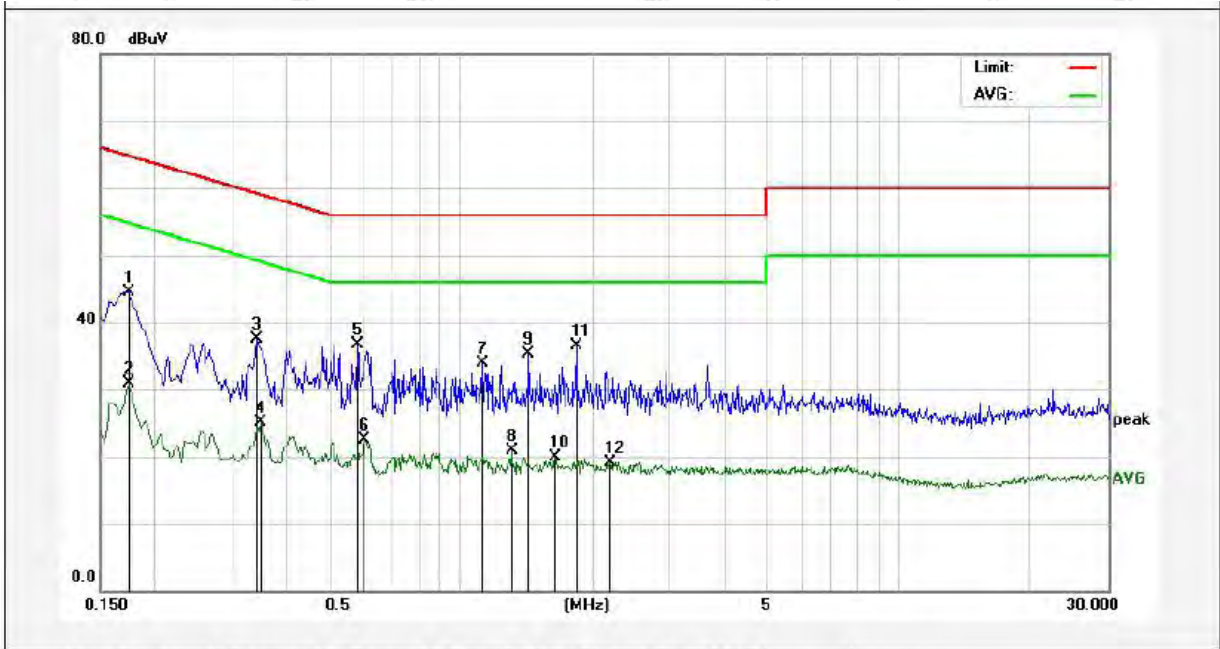
Test Site: 1# Shielded Room
 Operating Condition: Mode 1
 Test Specification: AC 120V, 60Hz for adapter
 Comment: Live Line
 Tem.: 23.5°C Hum.: 55%



No.	Freq. (MHz)	Reading (dBuV)	Factor (dB)	Result (dBuV)	Limit (dBuV)	Over Limit (dB)	Detector	Remark
1	0.3460	7.97	19.91	27.88	49.06	-21.18	AVG	
2	0.3540	19.70	19.91	39.61	58.87	-19.26	QP	
3	0.5220	18.86	19.99	38.85	56.00	-17.15	QP	
4	0.6100	6.02	20.01	26.03	46.00	-19.97	AVG	
5	0.6140	20.36	20.01	40.37	56.00	-15.63	QP	
6	0.8660	17.14	20.08	37.22	56.00	-18.78	QP	
7	1.0380	3.63	20.12	23.75	46.00	-22.25	AVG	
8	1.1460	16.81	20.12	36.93	56.00	-19.07	QP	
9	1.3900	3.29	20.13	23.42	46.00	-22.58	AVG	
10	1.5339	16.99	20.13	37.12	56.00	-18.88	QP	
11	1.7380	1.50	20.13	21.63	46.00	-24.37	AVG	
12	2.0940	1.39	20.14	21.53	46.00	-24.47	AVG	

Conducted Emission Test Data

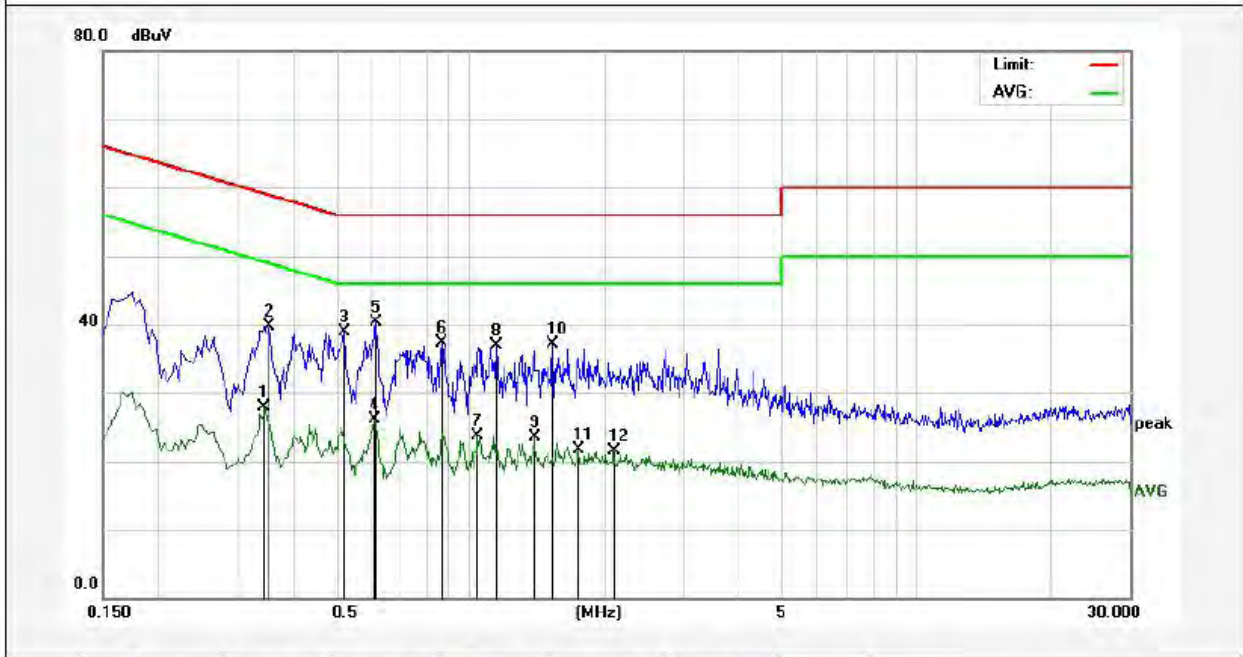
Test Site: 1# Shielded Room
 Operating Condition: Mode 1
 Test Specification: AC 120V, 60Hz for adapter
 Comment: Neutral Line
 Tem.: 23.5°C Hum.: 55%



No.	Freq. (MHz)	Reading (dBuV)	Factor (dB)	Result (dBuV)	Limit (dBuV)	Over Limit (dB)	Detector	Remark
1	0.1740	24.64	19.90	44.54	64.76	-20.22	QP	
2	0.1740	11.04	19.90	30.94	54.76	-23.82	AVG	
3	0.3420	17.52	19.91	37.43	59.15	-21.72	QP	
4	0.3500	5.10	19.91	25.01	48.96	-23.95	AVG	
5	0.5820	16.73	20.00	36.73	56.00	-19.27	QP	
6	0.6020	2.47	20.01	22.48	46.00	-23.52	AVG	
7	1.1180	13.79	20.12	33.91	56.00	-22.09	QP	
8	1.3060	0.79	20.13	20.92	46.00	-25.08	AVG	
9	1.4260	15.16	20.13	35.29	56.00	-20.71	QP	
10	1.6420	-0.21	20.13	19.92	46.00	-26.08	AVG	
11	1.8380	16.38	20.14	36.52	56.00	-19.48	QP	
12	2.1900	-1.01	20.14	19.13	46.00	-26.87	AVG	

Conducted Emission Test Data

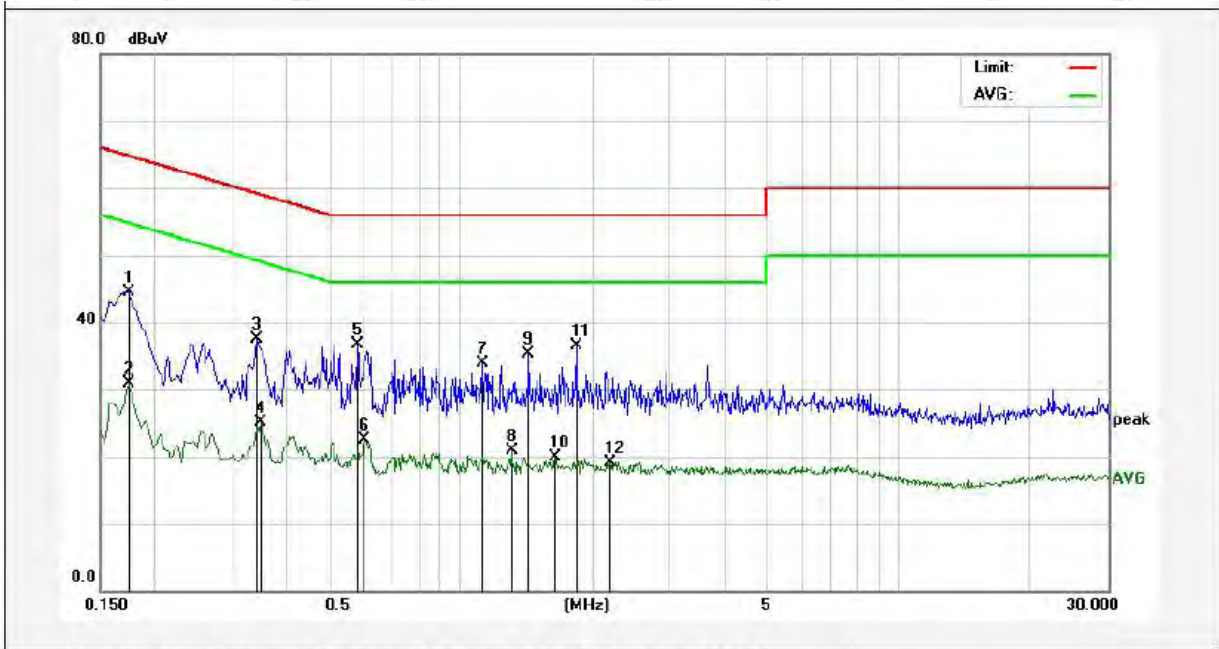
Test Site: 1# Shielded Room
 Operating Condition: Mode 1
 Test Specification: AC 120V, 60Hz for adapter
 Comment: Live Line
 Tem.: 23.5°C Hum.: 55%



No.	Freq. (MHz)	Reading (dBuV)	Factor (dB)	Result (dBuV)	Limit (dBuV)	Over Limit (dB)	Detector	Remark
1	0.3460	7.97	19.91	27.88	49.06	-21.18	AVG	
2	0.3540	19.70	19.91	39.61	58.87	-19.26	QP	
3	0.5220	18.86	19.99	38.85	56.00	-17.15	QP	
4	0.6100	6.02	20.01	26.03	46.00	-19.97	AVG	
5	0.6140	20.36	20.01	40.37	56.00	-15.63	QP	
6	0.8660	17.14	20.08	37.22	56.00	-18.78	QP	
7	1.0380	3.63	20.12	23.75	46.00	-22.25	AVG	
8	1.1460	16.81	20.12	36.93	56.00	-19.07	QP	
9	1.3900	3.29	20.13	23.42	46.00	-22.58	AVG	
10	1.5339	16.99	20.13	37.12	56.00	-18.88	QP	
11	1.7380	1.50	20.13	21.63	46.00	-24.37	AVG	
12	2.0940	1.39	20.14	21.53	46.00	-24.47	AVG	

Conducted Emission Test Data

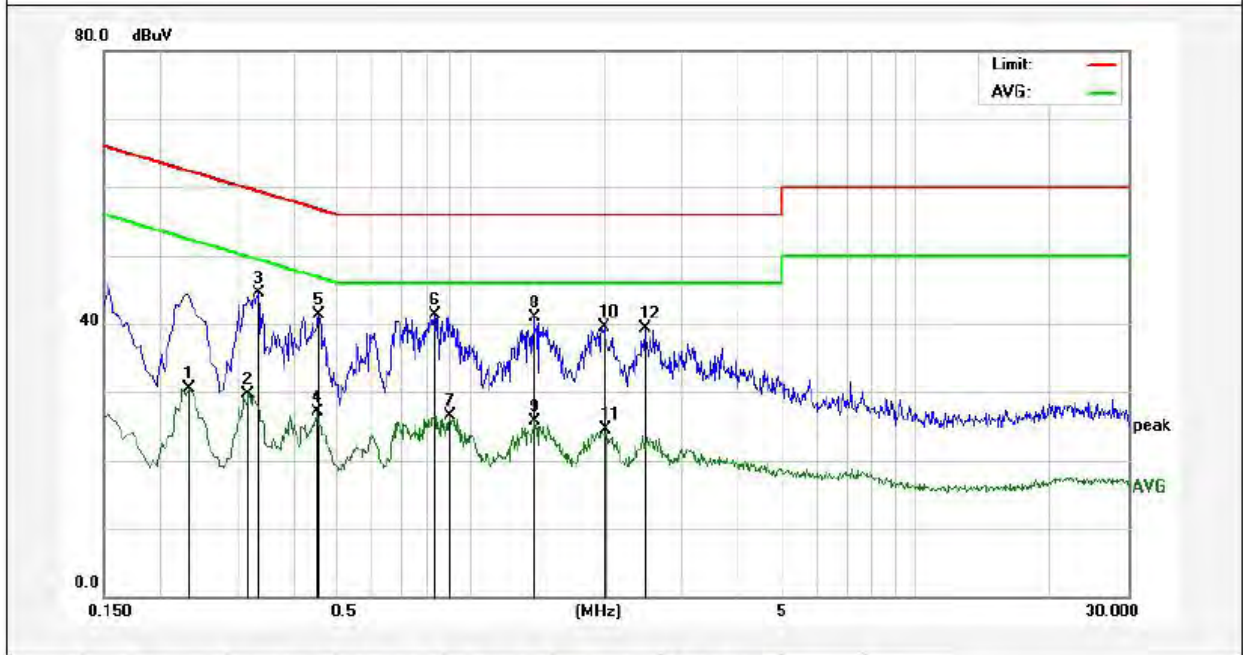
Test Site: 1# Shielded Room
 Operating Condition: Mode 1
 Test Specification: AC 120V, 60Hz for adapter
 Comment: Neutral Line
 Tem.: 23.5°C Hum.: 55%



No.	Freq. (MHz)	Reading (dBuV)	Factor (dB)	Result (dBuV)	Limit (dBuV)	Over Limit (dB)	Detector	Remark
1	0.1740	24.64	19.90	44.54	64.76	-20.22	QP	
2	0.1740	11.04	19.90	30.94	54.76	-23.82	AVG	
3	0.3420	17.52	19.91	37.43	59.15	-21.72	QP	
4	0.3500	5.10	19.91	25.01	48.96	-23.95	AVG	
5	0.5820	16.73	20.00	36.73	56.00	-19.27	QP	
6	0.6020	2.47	20.01	22.48	46.00	-23.52	AVG	
7	1.1180	13.79	20.12	33.91	56.00	-22.09	QP	
8	1.3060	0.79	20.13	20.92	46.00	-25.08	AVG	
9	1.4260	15.16	20.13	35.29	56.00	-20.71	QP	
10	1.6420	-0.21	20.13	19.92	46.00	-26.08	AVG	
11	1.8380	16.38	20.14	36.52	56.00	-19.48	QP	
12	2.1900	-1.01	20.14	19.13	46.00	-26.87	AVG	

Conducted Emission Test Data

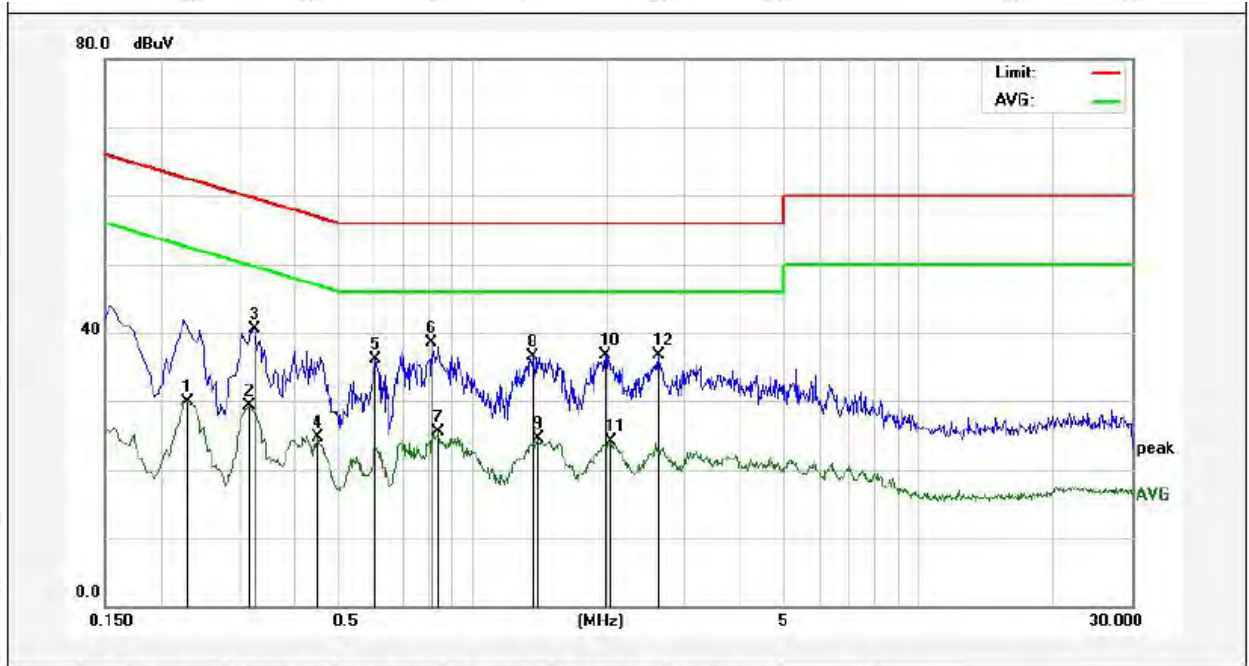
Test Site: 1# Shielded Room
 Operating Condition: Mode 1
 Test Specification: AC 240V, 60Hz for adapter
 Comment: Live Line
 Tem.: 23.5°C Hum.: 55%



No.	Freq. (MHz)	Reading (dBuV)	Factor (dB)	Result (dBuV)	Limit (dBuV)	Over Limit (dB)	Detector	Remark
1	0.2340	10.58	19.89	30.47	52.30	-21.83	AVG	
2	0.3180	9.90	19.90	29.80	49.76	-19.96	AVG	
3	0.3339	24.58	19.91	44.49	59.35	-14.86	QP	
4	0.4540	7.05	19.96	27.01	46.80	-19.79	AVG	
5	0.4580	21.41	19.96	41.37	56.73	-15.36	QP	
6	0.8340	21.21	20.08	41.29	56.00	-14.71	QP	
7	0.9020	6.48	20.09	26.57	46.00	-19.43	AVG	
8	1.3900	20.73	20.13	40.86	56.00	-15.14	QP	
9	1.3980	5.57	20.13	25.70	46.00	-20.30	AVG	
10	1.9940	19.34	20.14	39.48	56.00	-16.52	QP	
11	2.0140	4.43	20.14	24.57	46.00	-21.43	AVG	
12	2.4700	19.06	20.15	39.21	56.00	-16.79	QP	

Conducted Emission Test Data

Test Site: 1# Shielded Room
 Operating Condition: Mode 1
 Test Specification: AC 240V, 60Hz for adapter
 Comment: Neutral Line
 Tem.: 23.5°C Hum.: 55%



No.	Freq. (MHz)	Reading (dBuV)	Factor (dB)	Result (dBuV)	Limit (dBuV)	Over Limit (dB)	Detector	Remark
1	0.2300	10.08	19.89	29.97	52.45	-22.48	AVG	
2	0.3180	9.31	19.90	29.21	49.76	-20.55	AVG	
3	0.3260	20.56	19.90	40.46	59.55	-19.09	QP	
4	0.4500	4.77	19.96	24.73	46.87	-22.14	AVG	
5	0.6060	16.18	20.01	36.19	56.00	-19.81	QP	
6	0.8100	18.48	20.07	38.55	56.00	-17.45	QP	
7	0.8420	5.38	20.08	25.46	46.00	-20.54	AVG	
8	1.3700	16.43	20.13	36.56	56.00	-19.44	QP	
9	1.4060	4.46	20.13	24.59	46.00	-21.41	AVG	
10	1.9860	16.54	20.14	36.68	56.00	-19.32	QP	
11	2.0380	3.92	20.14	24.06	46.00	-21.94	AVG	
12	2.6220	16.51	20.15	36.66	56.00	-19.34	QP	

4. Radiation Spurious Emission and Band Edge

4.1. Test Standard and Limit

Test Standard	FCC Part15 C Section 15.209 and 15.205				
Test Limit	Frequency (MHz)	Field strength (microvolt/meter)	Limit (dBuV/m)	Remark	Measurement distance (m)
	0.009MHz~0.490MHz	2400/F(kHz)	-	-	300
	0.490MHz-1.705MHz	24000/F(kHz)	-	-	30
	1.705MHz-30MHz	30	-	-	30
	30MHz~88MHz	100	40.0	Quasi-peak	3
	88MHz~216MHz	150	43.5	Quasi-peak	3
	216MHz~960MHz	200	46.0	Quasi-peak	3
	960MHz~1000MHz	500	54.0	Quasi-peak	3
	Above 1000MHz	500	54.0	Average	3
-		-	74.0	Peak	3

Remark:

(1)The lower limit shall apply at the transition frequency.

(2) 15.35(b), Unless otherwise specified, the limit on peak radio frequency emissions is 20dB above the maximum permitted average emission limit applicable to the equipment under test. This peak limit applies to the total peak emission level radiated by the device.

4.2. Test Setup

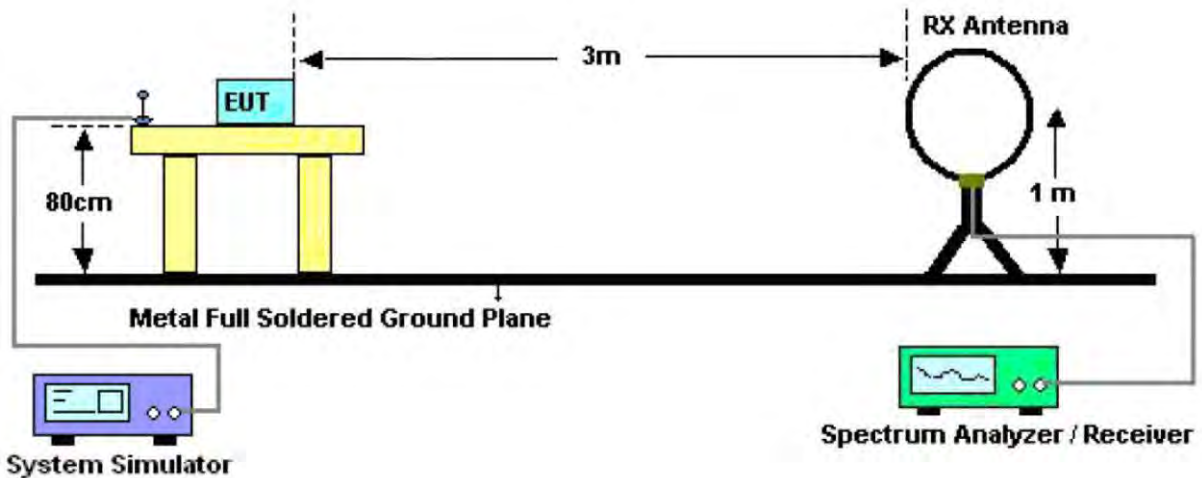


Figure 1. Below 30MHz

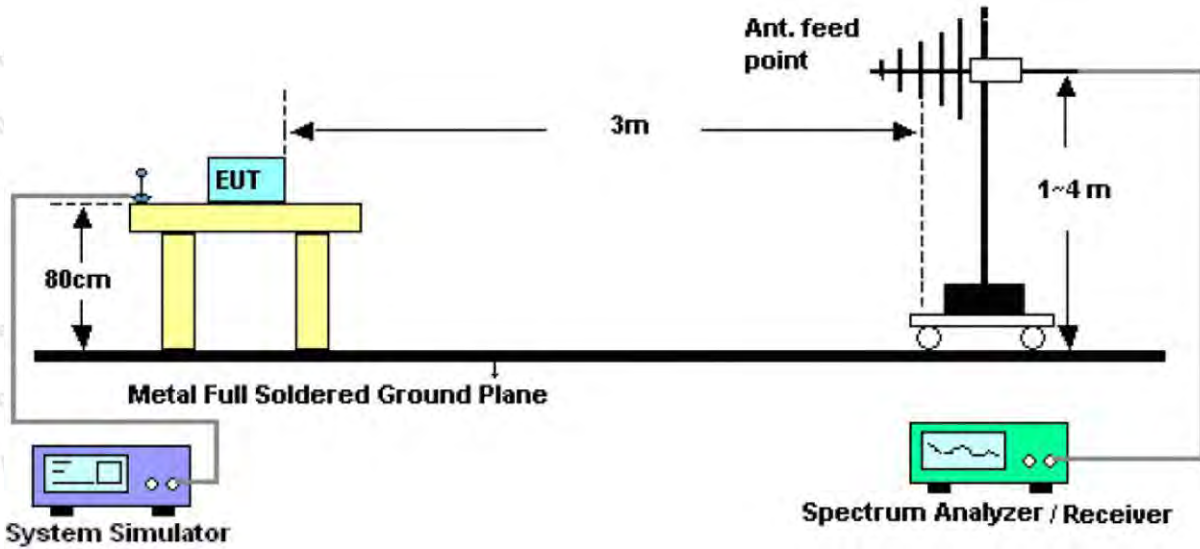


Figure 2. 30MHz to 1GHz

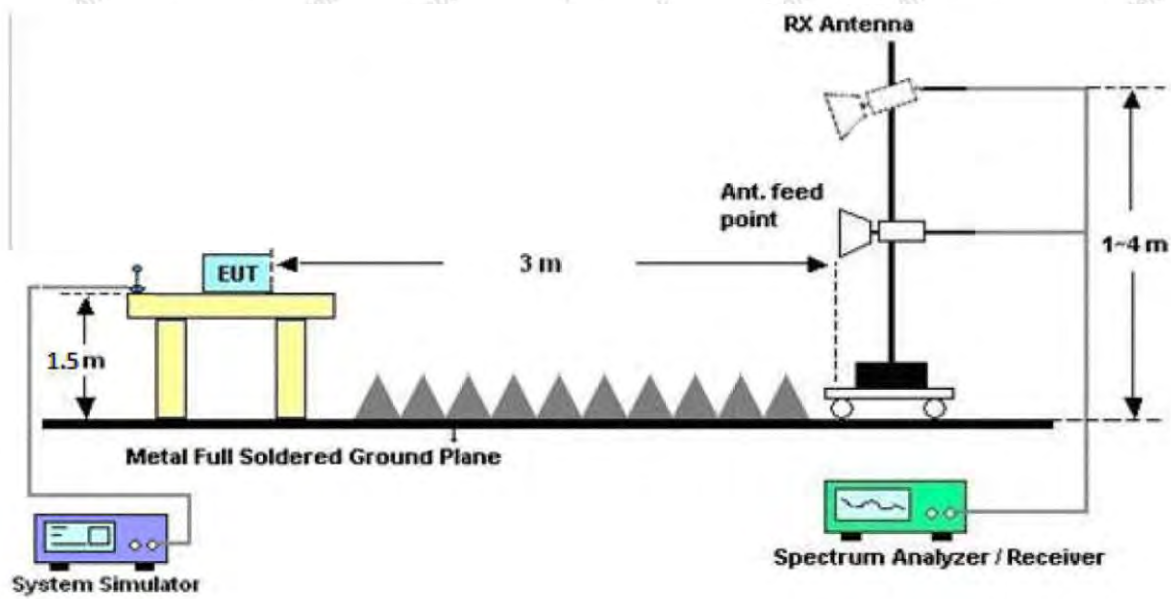


Figure 3. Above 1 GHz

4.3. Test Procedure

For below 1GHz: The EUT is placed on a turntable, which is 0.8m above the ground plane.

For above 1GHz: The EUT is placed on a turntable, which is 1.5m above the ground plane.

The turn table can rotate 360 degrees to determine the position of the maximum emission level. The EUT is set 3 meters away from the receiving antenna which is mounted on a antenna tower. The antenna can be moved up and down from 1 to 4 meters to find out the maximum emission level. Rotated the EUT through three orthogonal axes to determine the maximum emissions, both horizontal and vertical polarization of the antenna are set on test. The EUT is tested in 9*6*6 Chamber. The device is evaluated in xyz orientation.

For the radiated emission test above 1GHz:

Shenzhen Anbotek Compliance Laboratory Limited

Code:AB-RF-05-a

Address: 1/F., Building D, Sogood Science and Technology Park, Sanwei Community, Hangcheng Street, Bao'an District, Shenzhen, Guangdong, China.

Hotline
400-003-0500

Tel:(86) 755-26066440 Fax: (86) 755-26014772 Email: service@anbotek.com

www.anbotek.com

Place the measurement antenna away from each area of the EUT determined to be a source of emissions at the specified measurement distance, while keeping the measurement antenna aimed at the source of emissions at each frequency of significant emissions, with polarization oriented for maximum response. The measurement antenna may have to be higher or lower than the EUT, depending on the radiation pattern of the emission and staying aimed at the emission source for receiving the maximum signal. The final measurement antenna elevation shall be that which maximizes the emissions. The measurement antenna elevation for maximum emissions shall be restricted to a range of heights of from 1 m to 4 m above the ground or reference ground plane.

For 9kHz to 150kHz, Set the spectrum analyzer as:

RBW = 200Hz, VBW = 1kHz, Detector= Quasi-Peak, Trace mode= Max hold, Sweep- auto couple.

For 150kHz to 30MHz, Set the spectrum analyzer as:

RBW = 9kHz, VBW = 30kHz, Detector= Quasi-Peak, Trace mode= Max hold, Sweep- auto couple.

For 30MHz to 1000MHz, Set the spectrum analyzer as:

RBW = 100kHz, VBW = 300kHz, Detector= Quasi-Peak, Trace mode= Max hold, Sweep- auto couple.

For above 1GHz, Set the spectrum analyzer as:

RBW = 1MHz, VBW = 1MHz, Detector= Peak, Trace mode= Max hold, Sweep- auto couple.

RBW = 1MHz, VBW = 10Hz, Detector= Average, Trace mode= Max hold, Sweep- auto couple.

4.4. Test Data

PASS

During the test, pre-scan all the modes, and found the Low channel (TX Only) which is the worst case, only the worst case is recorded in the report.

The test results of 9kHz-30MHz was attenuated more than 20dB below the permissible limits, so the results don't record in the report.

Test Results (30~1000MHz)

Test Mode: Mode 1
 Power Source: DC 3.7V battery inside
 Polarization: Vertical
 Temp.(°C)/Hum.(%RH): 24.2°C/47%RH



No.	Freq. (MHz)	Reading (dBUV)	Factor (dB/m)	Result (dBUV/m)	Limit (dBUV/m)	Over Limit (dB)	Detector	Height (cm)	degree (deg)	Remark
1	37.5479	34.31	-14.90	19.41	40.00	-20.59	QP	100	0	
2	52.3912	35.32	-15.65	19.67	40.00	-20.33	QP	100	360	
3	79.2426	31.91	-17.79	14.12	40.00	-25.88	QP	100	360	
4	135.5062	36.74	-19.77	16.97	43.50	-26.53	QP	100	0	
5	241.6763	30.86	-15.60	15.26	46.00	-30.74	QP	100	0	
6	455.9058	31.33	-10.05	21.28	46.00	-24.72	QP	100	360	

Test Results (30~1000MHz)

Test Mode: Mode 1
 Power Source: DC 3.7V battery inside
 Polarization: Horizontal
 Temp.(°C)/Hum.(%RH): 24.2°C/47%RH



No.	Freq. (MHz)	Reading (dBuV)	Factor (dB/m)	Result (dBuV/m)	Limit (dBuV/m)	Over Limit (dB)	Detector	Height (cm)	degree (deg)	Remark
1	41.5670	31.10	-14.80	16.30	40.00	-23.70	QP	100	0	
2	99.5281	34.82	-19.42	15.40	43.50	-28.10	QP	100	360	
3	208.5803	34.62	-19.70	14.92	43.50	-28.58	QP	100	360	
4	231.7179	37.93	-19.21	18.72	46.00	-27.28	QP	100	0	
5	457.5073	37.37	-11.76	25.61	46.00	-20.39	QP	100	0	
6	721.7259	32.42	-5.67	26.75	46.00	-19.25	QP	100	360	

Test Results (1GHz-25GHz)

Test Mode: CH00					Test channel: Lowest			
Peak Value								
Frequency (MHz)	Read Level (dBuV)	Antenna Factor (dB/m)	Cable Loss (dB)	Preamp Factor (dB)	Level (dBuV/m)	Limit (dBuV/m)	Over Limit (dB)	Pol.
4804.00	39.26	34.04	6.58	34.09	45.79	74.00	-28.21	V
7206.00	33.13	37.11	7.73	34.50	43.47	74.00	-30.53	V
9608.00	32.62	39.31	9.23	34.79	46.37	74.00	-27.63	V
12010.00	*					74.00		V
14412.00	*					74.00		V
4804.00	43.94	34.04	6.58	34.09	50.47	74.00	-23.53	H
7206.00	35.05	37.11	7.73	34.50	45.39	74.00	-28.61	H
9608.00	32.23	39.31	9.23	34.79	45.98	74.00	-28.02	H
12010.00	*					74.00		H
14412.00	*					74.00		H
Average Value								
Frequency (MHz)	Read Level (dBuV)	Antenna Factor (dB/m)	Cable Loss (dB)	Preamp Factor (dB)	Level (dBuV/m)	Limit (dBuV/m)	Over Limit (dB)	Pol.
4804.00	27.70	34.04	6.58	34.09	34.23	54.00	-19.77	V
7206.00	21.59	37.11	7.73	34.50	31.93	54.00	-22.07	V
9608.00	20.55	39.31	9.23	34.79	34.30	54.00	-19.70	V
12010.00	*					54.00		V
14412.00	*					54.00		V
4804.00	32.15	34.04	6.58	34.09	38.68	54.00	-15.32	H
7206.00	23.89	37.11	7.73	34.50	34.23	54.00	-19.77	H
9608.00	20.44	39.31	9.23	34.79	34.19	54.00	-19.81	H
12010.00	*					54.00		H
14412.00	*					54.00		H

Test Results (1GHz-25GHz)

Test Mode: CH19					Test channel: Middle			
Peak Value								
Frequency (MHz)	Read Level (dBuV)	Antenna Factor (dB/m)	Cable Loss (dB)	Preamp Factor (dB)	Level (dBuV/m)	Limit (dBuV/m)	Over Limit (dB)	Pol.
4880.00	38.72	34.38	6.69	34.09	45.70	74.00	-28.30	V
7320.00	32.77	37.22	7.78	34.53	43.24	74.00	-30.76	V
9760.00	32.30	39.46	9.35	34.80	46.31	74.00	-27.69	V
12200.00	*					74.00		V
14640.00	*					74.00		V
4880.00	43.29	34.38	6.69	34.09	50.27	74.00	-23.73	H
7320.00	34.65	37.22	7.78	34.53	45.12	74.00	-28.88	H
9760.00	31.86	39.46	9.35	34.80	45.87	74.00	-28.13	H
12200.00	*					74.00		H
14640.00	*					74.00		H
Average Value								
Frequency (MHz)	Read Level (dBuV)	Antenna Factor (dB/m)	Cable Loss (dB)	Preamp Factor (dB)	Level (dBuV/m)	Limit (dBuV/m)	Over Limit (dB)	Pol.
4880.00	27.29	34.38	6.69	34.09	34.27	54.00	-19.73	V
7320.00	21.31	37.22	7.78	34.53	31.78	54.00	-22.22	V
9760.00	20.30	39.46	9.35	34.80	34.31	54.00	-19.69	V
12200.00	*					54.00		V
14640.00	*					54.00		V
4880.00	31.67	34.38	6.69	34.09	38.65	54.00	-15.35	H
7320.00	23.58	37.22	7.78	34.53	34.05	54.00	-19.95	H
9760.00	20.14	39.46	9.35	34.80	34.15	54.00	-19.85	H
12200.00	*					54.00		H
14640.00	*					54.00		H

Test Results (1GHz-25GHz)

Test Mode: CH39					Test channel: Highest			
Peak Value								
Frequency (MHz)	Read Level (dBuV)	Antenna Factor (dB/m)	Cable Loss (dB)	Preamplifier Factor (dB)	Level (dBuV/m)	Limit (dBuV/m)	Over Limit (dB)	Pol.
4960.00	37.80	34.72	6.79	34.09	45.22	74.00	-28.78	V
7440.00	32.16	37.34	7.82	34.57	42.75	74.00	-31.25	V
9920.00	31.76	39.62	9.46	34.81	46.03	74.00	-27.97	V
12400.00	*					74.00		V
14880.00	*					74.00		V
4960.00	42.19	34.72	6.79	34.09	49.61	74.00	-24.39	H
7440.00	33.96	37.34	7.82	34.57	44.55	74.00	-29.45	H
9920.00	31.23	39.62	9.46	34.81	45.50	74.00	-28.50	H
12400.00	*					74.00		H
14880.00	*					74.00		H
Average Value								
Frequency (MHz)	Read Level (dBuV)	Antenna Factor (dB/m)	Cable Loss (dB)	Preamplifier Factor (dB)	Level (dBuV/m)	Limit (dBuV/m)	Over Limit (dB)	Pol.
4960.00	26.62	34.72	6.79	34.09	34.04	54.00	-19.96	V
7440.00	20.86	37.34	7.82	34.57	31.45	54.00	-22.55	V
9920.00	19.90	39.62	9.46	34.81	34.17	54.00	-19.83	V
12400.00	*					54.00		V
14880.00	*					54.00		V
4960.00	30.92	34.72	6.79	34.09	38.34	54.00	-15.66	H
7440.00	23.07	37.34	7.82	34.57	33.66	54.00	-20.34	H
9920.00	19.68	39.62	9.46	34.81	33.95	54.00	-20.05	H
12400.00	*					54.00		H
14880.00	*					54.00		H

Remark:

1. Level =Receiver Read level + Antenna Factor + Cable Loss – Preamplifier Factor
2. "*" means the test results were attenuated more than 20dB below the permissible limits, so the results don't record in the report.

Radiated Band Edge:

Test Mode: CH00	Test channel: Lowest
Peak Value(Vertical)	Peak Value(Horizontal)
Average Value(Vertical)	Average Value(Horizontal)

Test Mode: CH39	Test channel: Highest
Peak Value(Vertical)	Peak Value(Horizontal)
Average Value(Vertical)	Average Value(Horizontal)

Remark:

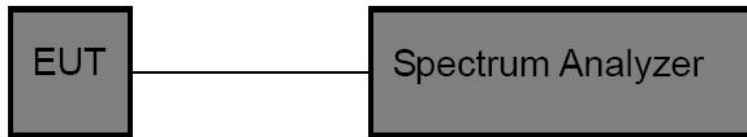
- Level = Receiver Read level + Antenna Factor + Cable Loss – Pre-amplifier Factor

5. Maximum Peak Output Power Test

5.1. Test Standard and Limit

Test Standard	FCC Part15 C Section 15.247 (b)(3)
Test Limit	30dBm

5.2. Test Setup



5.3. Test Procedure

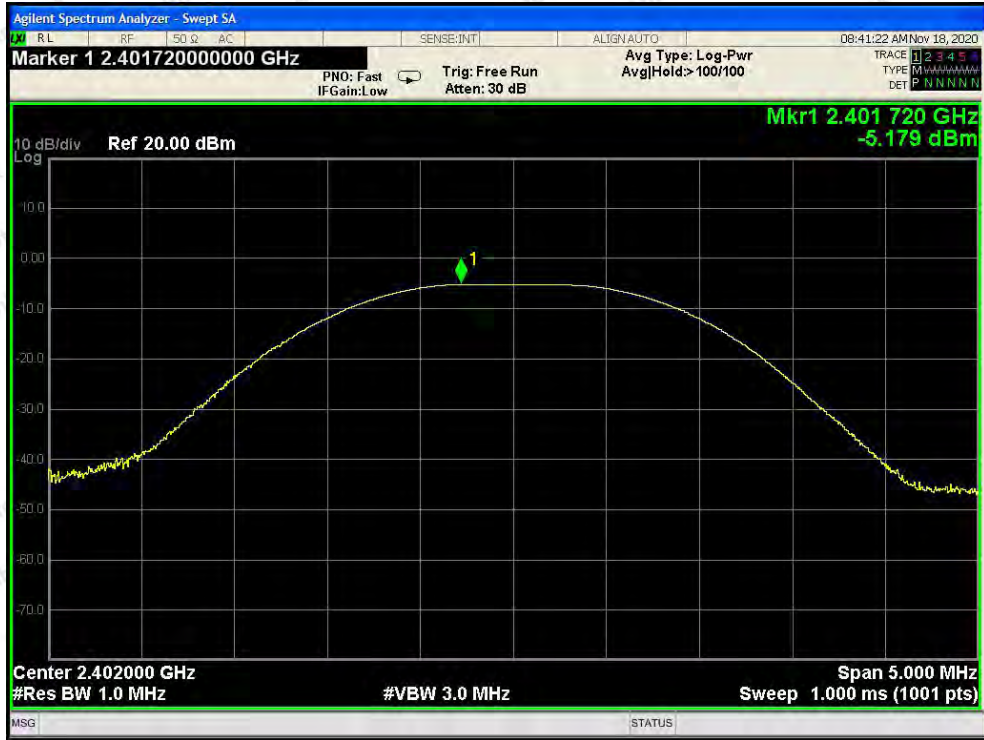
This procedure shall be used when the measurement instrument has available a resolution bandwidth that is greater than the DTS bandwidth.

1. Set the RBW \geq DTS bandwidth.
2. Set the VBW $\geq 3 \times$ RBW.
3. Set the span $\geq 3 \times$ RBW.
4. Detector = peak.
5. Sweep time = auto couple.
6. Trace mode = max hold.
7. Allow trace to fully stabilize.
8. Use peak marker function to determine the peak amplitude level.

5.4. Test Data

Test Item	: Max. peak output power	Test Mode	: CH Low ~ CH High
Test Voltage	: DC 3.7V battery inside	Temperature	: 22.7° C
Test Result	: PASS	Humidity	: 53 %

Channel Frequency (MHz)	Peak Power output (dBm)	Limit (dBm)	Results
2402	-5.179	30	PASS
2440	-4.767	30	PASS
2480	-5.788	30	PASS



CH: Low



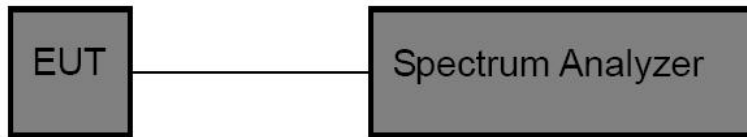
CH: Middle

6. 6DB Occupy Bandwidth Test

6.1. Test Standard and Limit

Test Standard	FCC Part15 C Section 15.247 (a)(2)
Test Limit	>500kHz

6.2. Test Setup



6.3. Test Procedure

1. Place the EUT on the table and set it in the transmitting mode.
2. Remove the antenna from the EUT and then connect a low loss RF cable from the antenna port to the spectrum analyzer.
3. Set the spectrum analyzer as:
RBW = 100kHz, VBW≥3*RBW =300kHz,
Detector= Peak
Trace mode= Max hold.
Sweep- auto couple.
4. Mark the peak frequency and -6dB (upper and lower) frequency.
5. Repeat until all the rest channels are investigated.

6.4. Test Data

Test Item	: 6dB Bandwidth	Test Mode	: CH Low ~ CH High
Test Voltage	: DC 3.7V battery inside	Temperature	: 22.7° C
Test Result	: PASS	Humidity	: 53 %

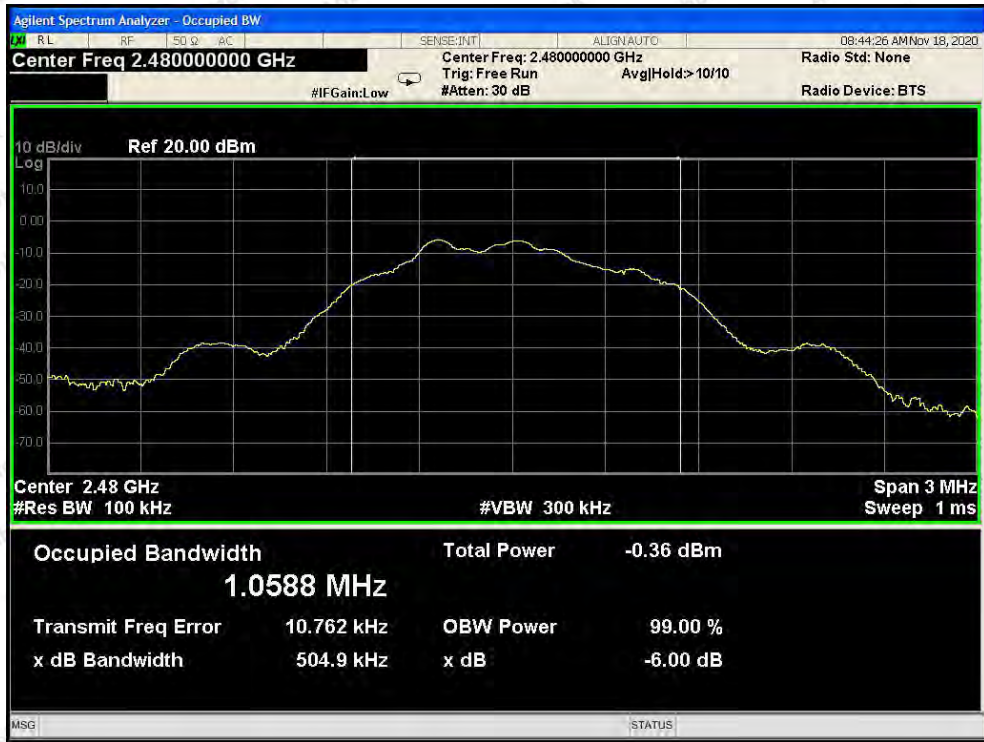
Channel	Frequency(MHz)	Bandwidth (kHz)	Limit (kHz)	Results
Low	2402	508.4	>500	PASS
Middle	2440	504.2		PASS
High	2480	504.9		PASS



CH: Low



CH: Middle



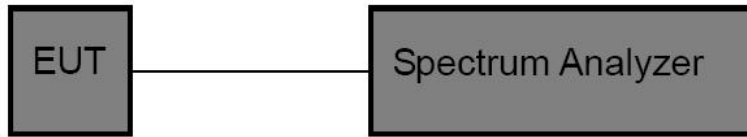
CH: High

7. Power Spectral Density Test

7.1. Test Standard and Limit

Test Standard	FCC Part15 C Section 15.247 (e)
Test Limit	8dBm

7.2. Test Setup



7.3. Test Procedure

1. Place the EUT on the table and set it in transmitting mode. Remove the antenna from the EUT and then connect a low loss RF cable from the antenna port to the spectrum analyzer.
2. Set the spectrum analyzer as RBW = 3kHz, VBW = 10kHz, Span = 1.5xDTS BW
3. Record the max. reading.
4. Repeat the above procedure until the measurements for all frequencies are completed.

7.4. Test Data

Test Item	: Power Spectral Density	Test Mode	: CH Low ~ CH High
Test Voltage	: DC 3.7V battery inside	Temperature	: 22.7° C
Test Result	: PASS	Humidity	: 53 %

Channel	Frequency (MHz)	PSD (dBm/3KHz)	Limit (dBm/3KHz)	Results
Low	2402	-23.289	8.00	PASS
Middle	2440	-22.831	8.00	PASS
High	2480	-23.841	8.00	PASS



CH: Low



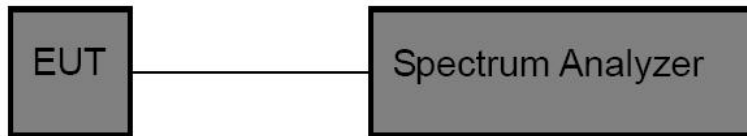
CH: Middle

8. 100kHz Bandwidth of Frequency Band Edge Requirement

8.1. Test Standard and Limit

Test Standard	FCC Part15 C Section 15.247 (d)
Test Limit	in any 100 kHz bandwidth outside the frequency bands in which the spread spectrum intentional radiator in operating, the radio frequency power that is produced by the intentional radiator shall be at least 20dB below that in the 100kHz bandwidth within the band that contains the highest level of the desired power, In addition, radiated emissions which fall in the restricted bands, as defined in §15.205(a), must also comply with the radiated emission limits specified in15.209(a).

8.2. Test Setup



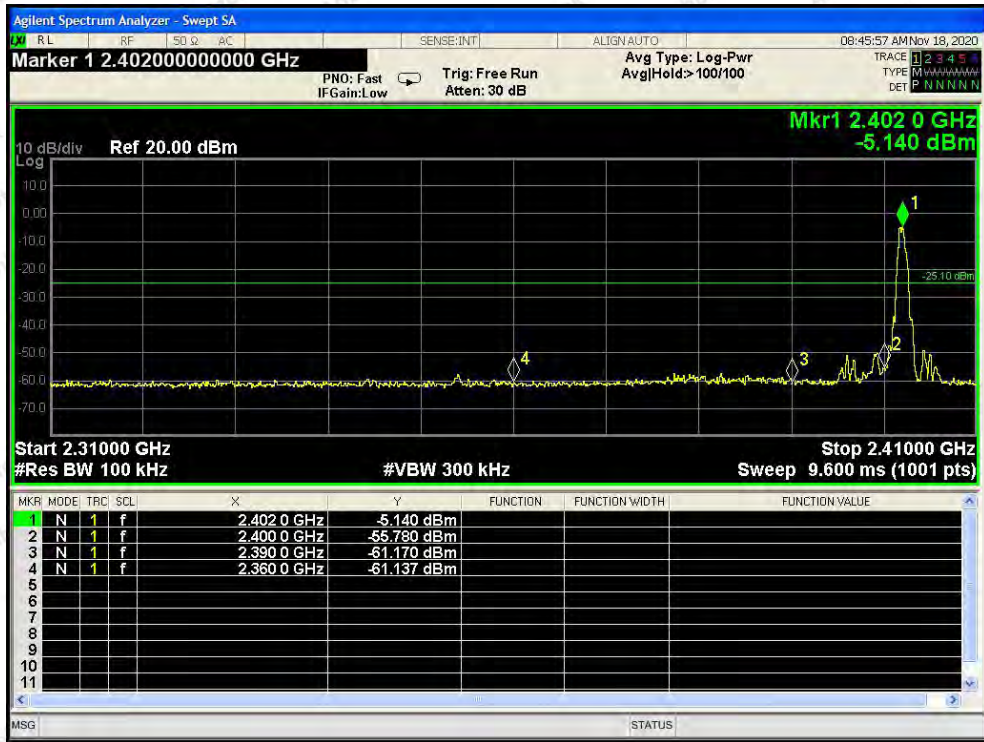
8.3. Test Procedure

Using the following spectrum analyzer setting:

1. Set the RBW = 100KHz.
2. Set the VBW = 300KHz.
3. Sweep time = auto couple.
4. Detector function = peak.
5. Trace mode = max hold.
6. Allow trace to fully stabilize.

8.4. Test Data

Test Item	: Band edge	Test Mode	: CH Low ~ CH High
Test Voltage	: DC 3.7V battery inside	Temperature	: 22.7° C
Test Result	: PASS	Humidity	: 53 %



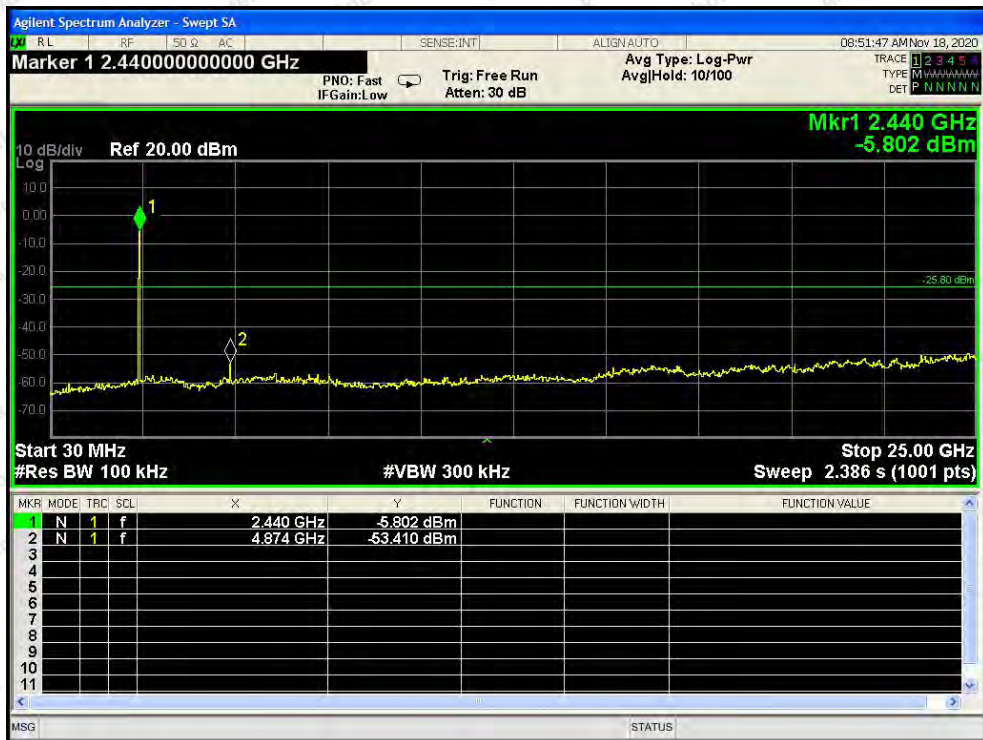
CH: Low



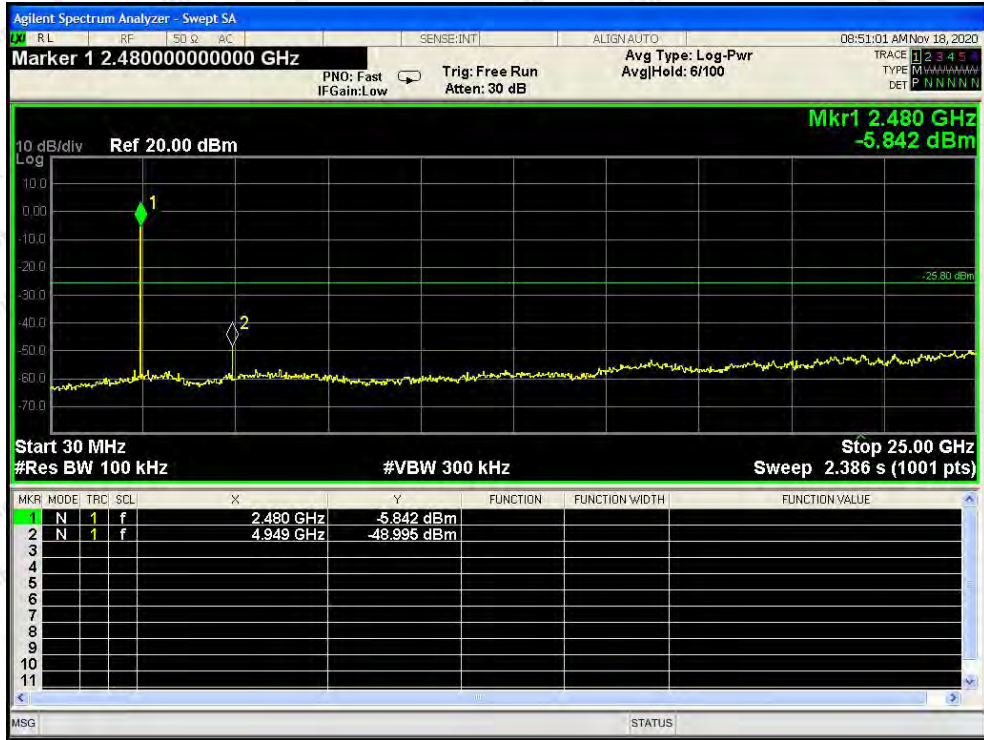
CH: High



CH: Low



CH: Middle



CH: High

9. Antenna Requirement

9.1. Test Standard and Requirement

Test Standard	FCC Part15 Section 15.203 /247(c)
Requirement	<p>1) 15.203 requirement: An intentional radiator shall be designed to ensure that no antenna other than that furnished by the responsible party shall be used with the device. The use of a permanently attached antenna or of an antenna that uses a unique coupling to the intentional radiator, the manufacturer may design the unit so that a broken antenna can be replaced by the user, but the use of a standard antenna jack or electrical connector is prohibited.</p> <p>2) 15.247(c) (1)(i) requirement: Systems operating in the 2400-2483.5 MHz band that is used exclusively for fixed. Point-to-point operations may employ transmitting antennas with directional gain greater than 6dBi provided the maximum conducted output power of the intentional radiator is reduced by 1 dB for every 3 dB that the directional gain of the antenna</p>

9.2. Antenna Connected Construction

The antenna is a Ceramics Antenna Antenna which permanently attached, and the best case gain of the antenna is 3.19 dBi. It complies with the standard requirement.

APPENDIX I -- TEST SETUP PHOTOGRAPH

Photo of Power Line Conducted Emission Test



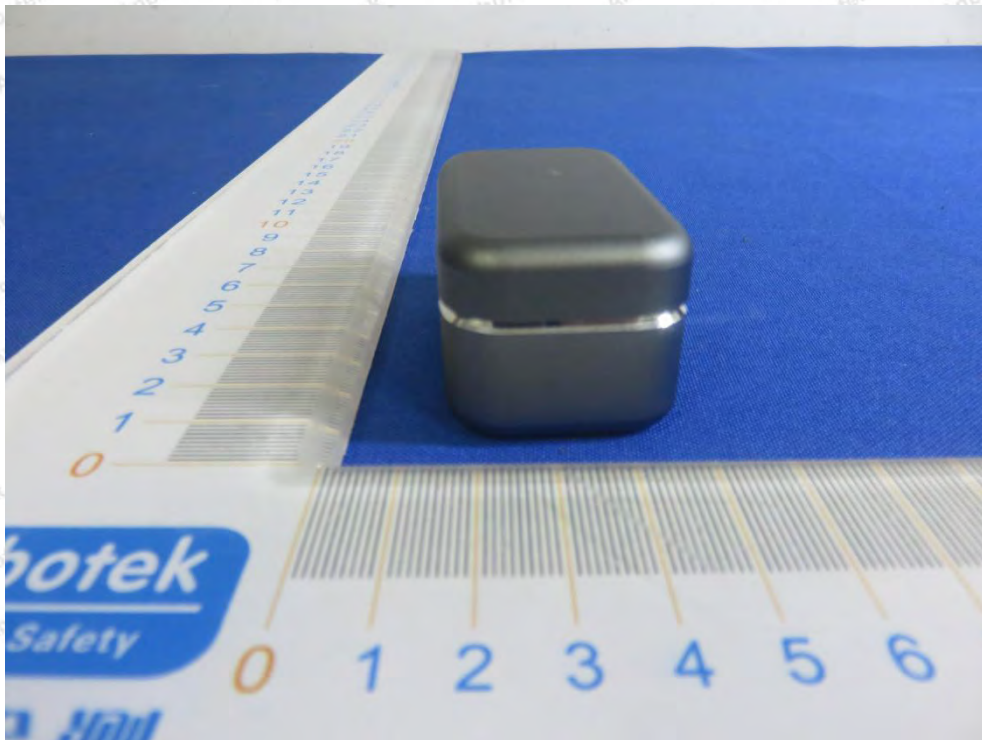
Photo of Radiation Emission Test

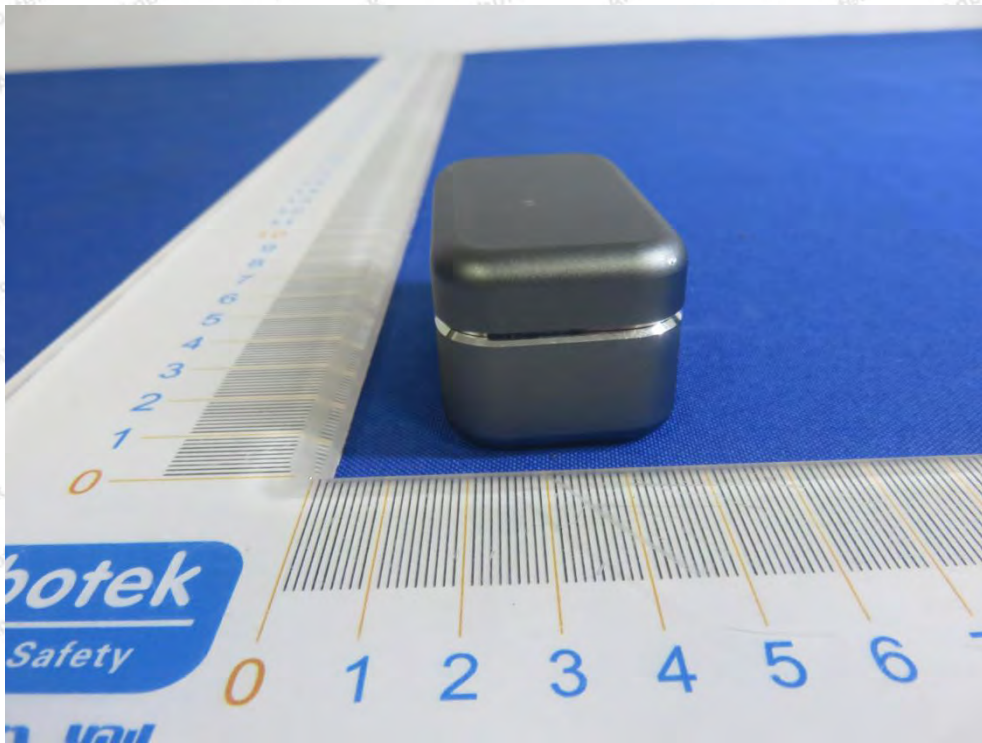




APPENDIX II -- EXTERNAL PHOTOGRAPH









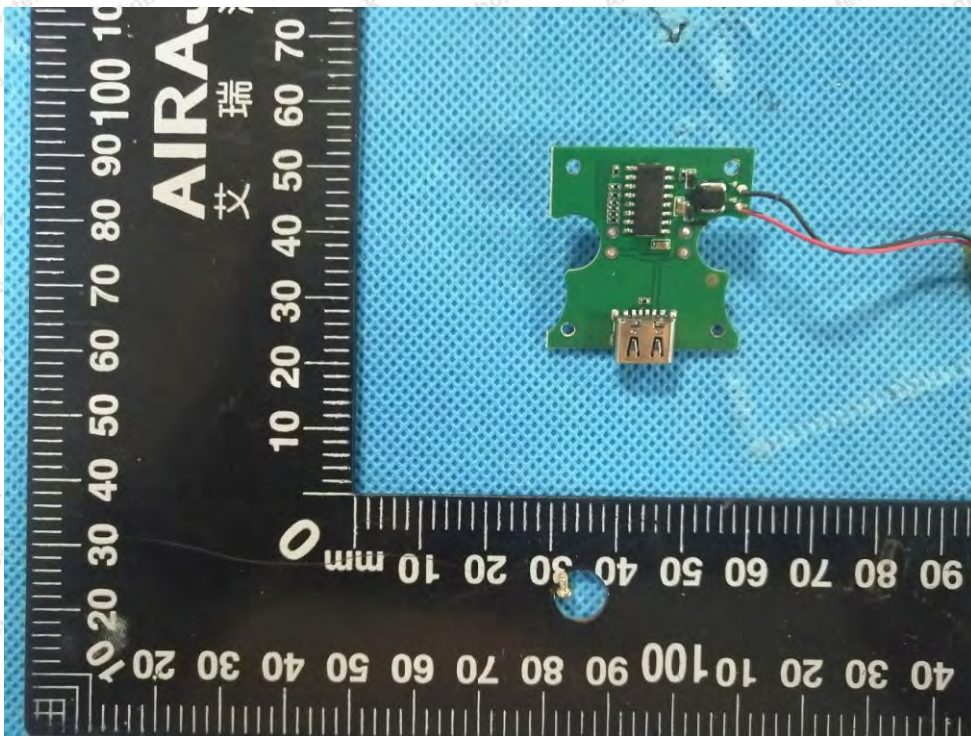
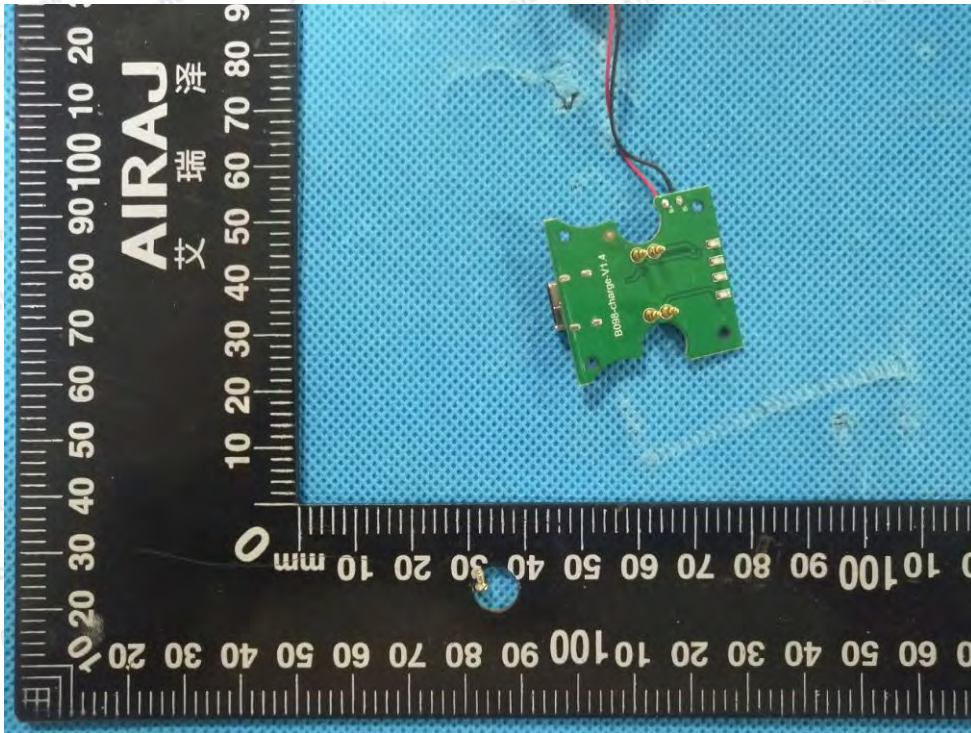




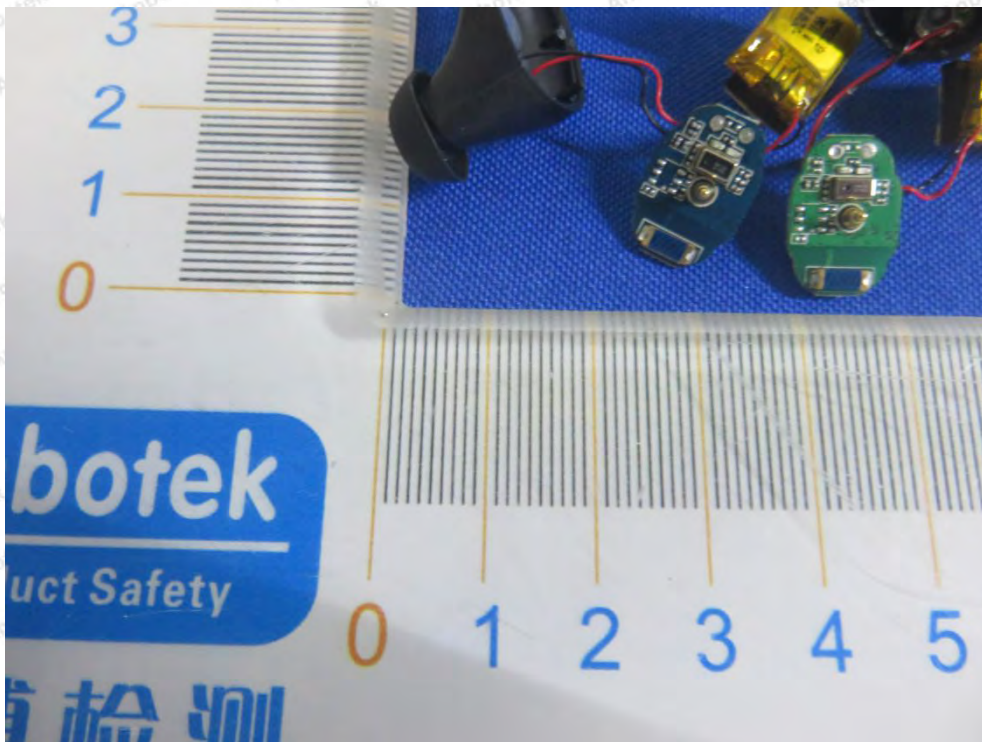
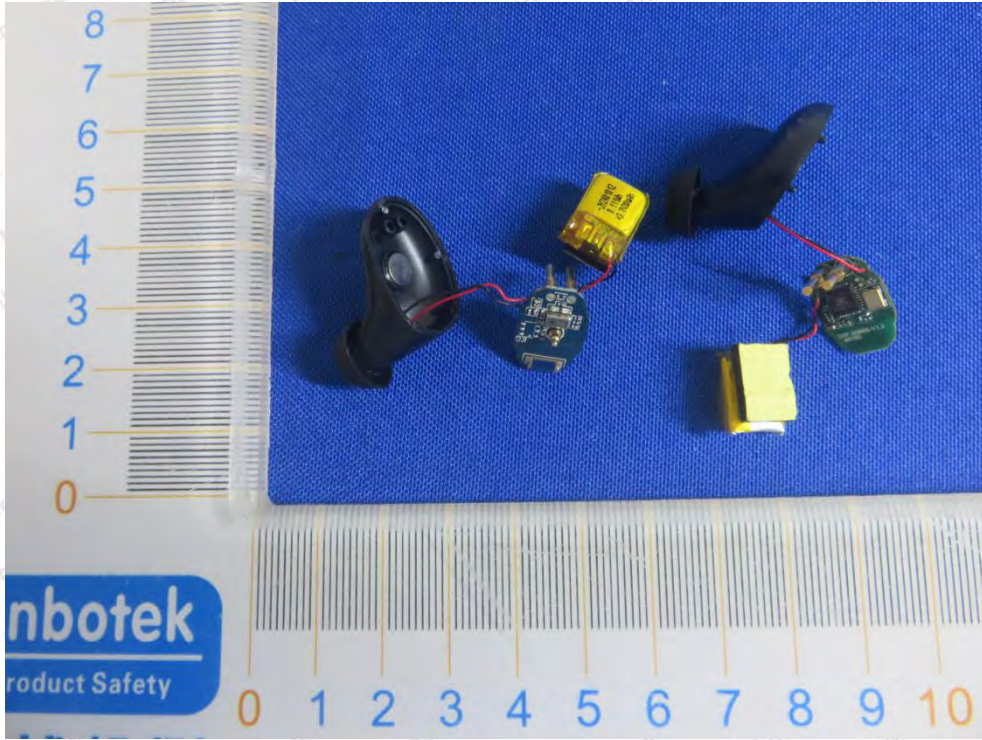


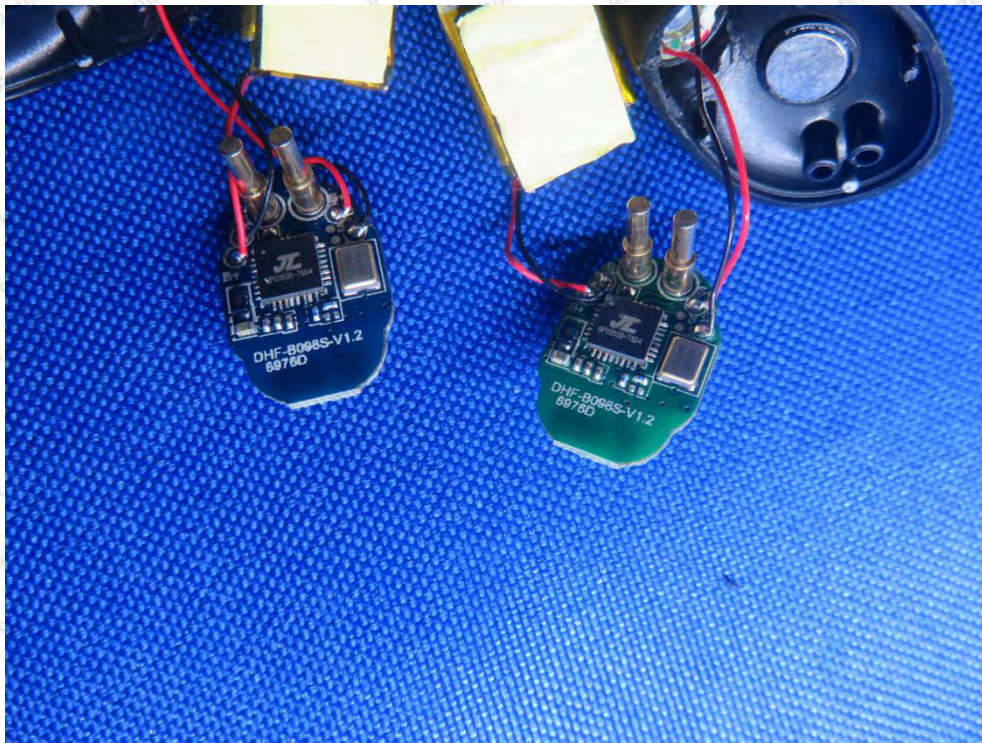
APPENDIX III -- INTERNAL PHOTOGRAPH

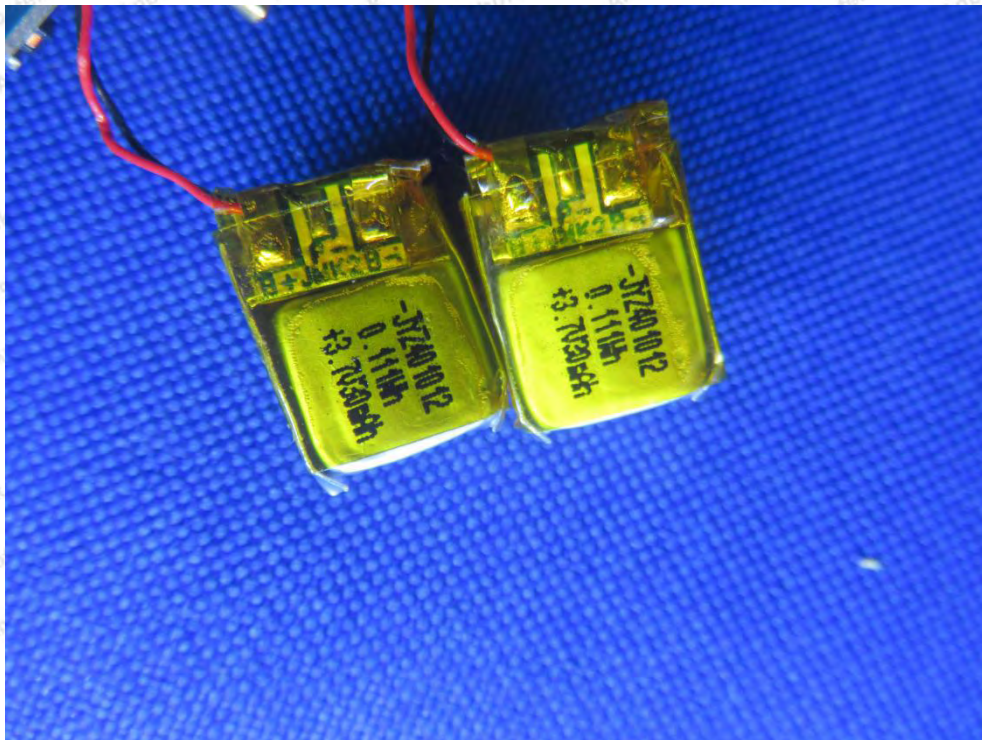
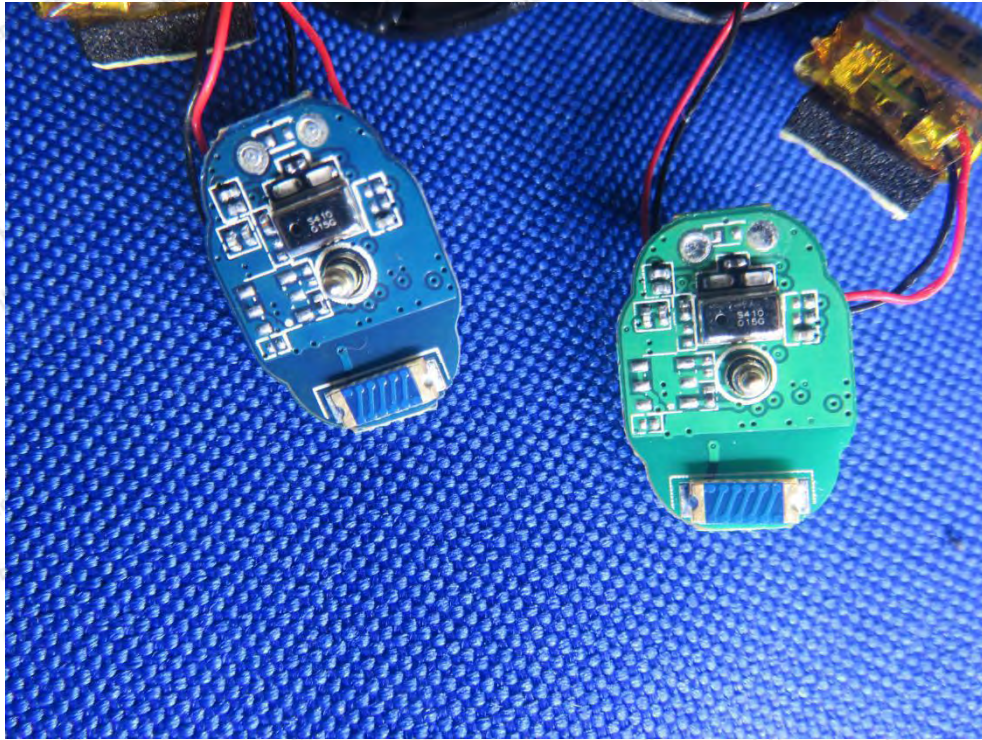












----- End of Report -----