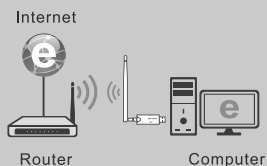


## Quick Installation Guide

PC BOARD ASSY: WIFI MODULE  
1002216-0000

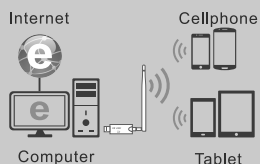
### Main Functions:

**A WiFi Receiver :**  
It can receive WiFi, so you can use the Internet wirelessly.



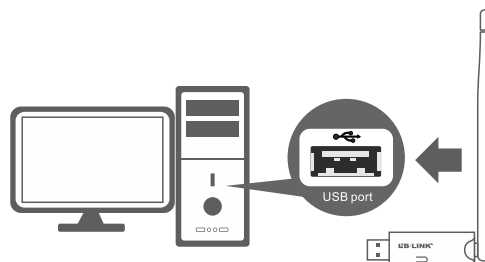
❗ For more information see "Mode 1: Wireless Receiver".

**WiFi Transmitting:**  
Change wired computer networks into WiFi networks to provide WiFi for cellphones and tablets.

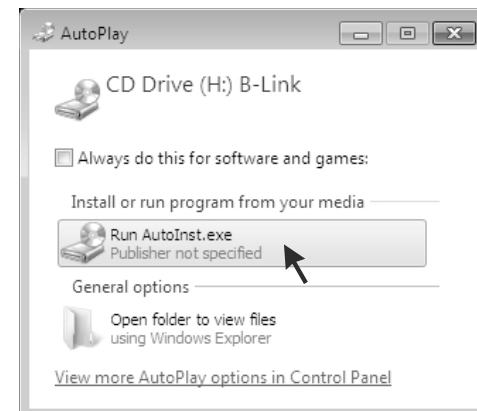


❗ For more information see "Mode 2: WiFi Transmitting".

## 1. Hardware Installation

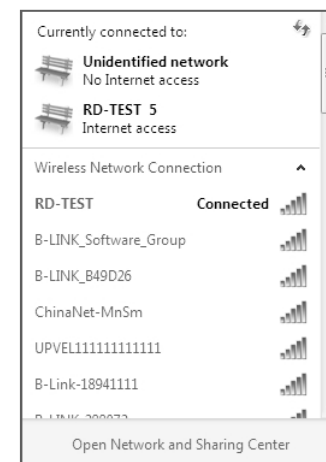


## 2. Driver Installation



### Mode 1: Wireless Receiver (Windows 7 is used as an example, other operating systems are similar.)

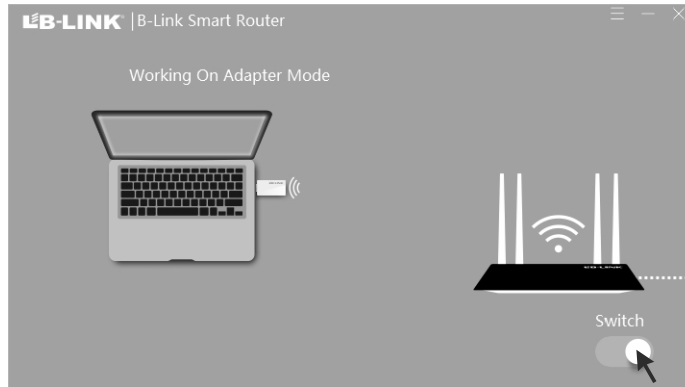
- 1 Click on the networking icon in the lower right corner of the desktop, a dialog box like the one shown in the picture should come up. Choose the name of the network that you want to connect to, and click "Connect".
- 2 If the wireless network is encrypted, you will need to enter the wireless password, and then click "OK".
- 3 When the wireless network displays "Connected", you are connected to that network.



## Mode 2: WiFi Transmitting (Windows 7 is used as an example, other operating systems are similar.)

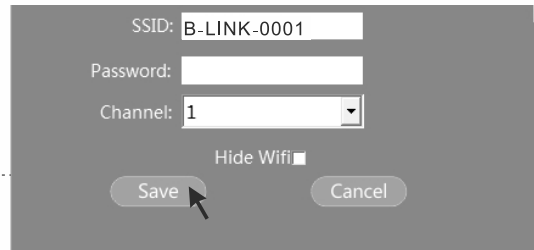
Click on **"Switch"** to change modes.

Note: Clicking on **"Switch"** will change between WiFi Transmitting and Receiving modes.

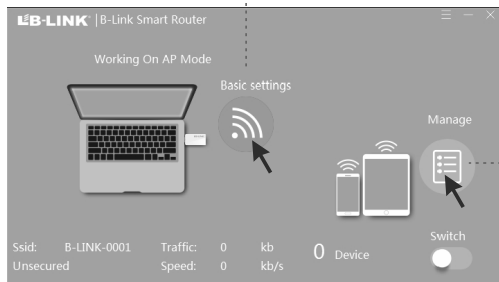


Please refer to the pictures below to setup a wireless Access Point (AP: WiFi Transmitting mode).

After the driver is installed, the following dialog box pops up, you need to complete setup as shown below:



1. Setup a wireless network name (SSID) and password, for "Channel" you can keep the default.
2. If you choose "Hide Wifi" other people will not find your network.
3. Click on "Save" to complete setup.



In the device manager you can see all of the devices that are connected to your network. If you do not want a device to connect to your network, you can blacklist it, or remove it from the blacklist.

## Troubleshooting

**After I plug in the wireless adapter, the setup wizard does not pop up, what should I do?**

1. Please open "My computer" or "Computer", find the "Blink CD", and double click on "AutoInst.exe" to run it.
2. Try another USB port on the computer.
3. Make sure that the computer does not have a similar driver already installed if so, uninstall it then plug in the wireless adapter again.
4. Make sure that the computer is configured to auto-play media, and that all devices can use auto-play.
5. If this steps do not solve your problem, please call LB-LINK customer service for more help.

**FCC Warning:**

This equipment has been tested and found to comply with the limits for a Class B digital device, pursuant to part 15 of the FCC Rules. These limits are designed to provide reasonable protection against harmful interference in a residential installation. This equipment generates, uses and can radiate radio frequency energy and, if not installed and used in accordance with the instructions, may cause harmful interference to radio communications. However, there is no guarantee that interference will not occur in a particular installation. If this equipment does cause harmful interference to radio or television reception, which can be determined by turning the equipment off and on, the user is encouraged to try to correct the interference by one or more of the following measures:

- Reorient or relocate the receiving antenna.
- Increase the separation between the equipment and receiver.
- Connect the equipment into an outlet on a circuit different from that to which the receiver is connected.
- Consult the dealer or an experienced radio/TV technician for help.

Caution: Any changes or modifications to this device not explicitly approved by manufacturer could void your authority to operate this equipment.

This device complies with part 15 of the FCC Rules. Operation is subject to the following two conditions: (1) This device may not cause harmful interference, and (2) this device must accept any interference received, including interference that may cause undesired operation.

The device has been evaluated to meet general RF exposure requirement. The device can be used in portable exposure condition without restriction.