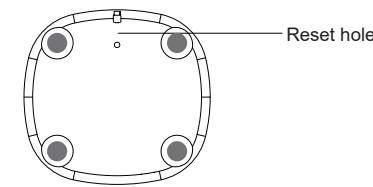


Professional Body Composition Analyzer

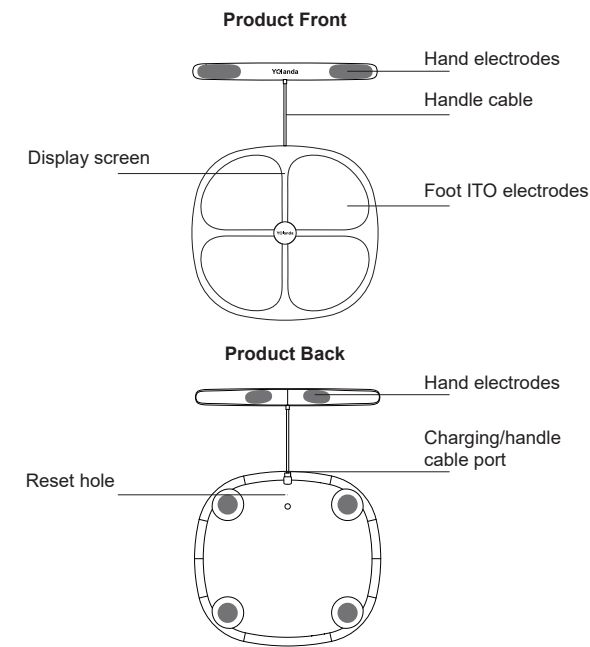
CS10A User's Manual

Precautions

1. People with blow medical devices should not use this device
 - Implantable medical electronic devices such as cardiac pacemakers
 - Artificial heart and other medical electronic equipment
 - Wearable medical electronic equipment such as electrocardiograph
2. Do not jump on the device
3. Please measure at the same time and under the same conditions every day
4. To ensure accurate measurement, please place the scale on a hard and flat floor
5. When there is a big deviation in measuring the weight, you can try to use a small object such as a needle to insert the mechanical reset hole



Appearance

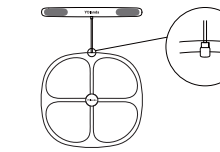


Product Specifications

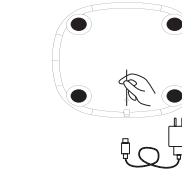
Model	CS10A
Dimension	Scale: 320 x 300 x 21 mm Handle: 317 x 35 x 23 mm
Weight Range	0.2-180kg(0.4lb-396lb)
Display type	LED
Outputs(LED screen)	Weight, Body Fat%, BMI, Muscle(Skeletal Muscle Mass)
Power supply	400mAh lithium battery
Working current	<300mA
Data transmission	Bluetooth and WiFi
Testing Method	Direct segmental Multi-frequency BIA Method
Electrode Method	Tetrapolar 8-Point Tactile Electrode Methods
Accessories	CS10A scale, Measuring handle Type-C charging cable, User's manual

Installation /Charging

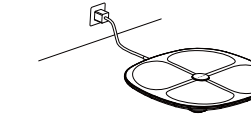
Insert handle cable into the type-c port at the top of the scale



The first use requires to charge or insert the reset hole to activate the device



When the scale displays "Lo", it means that the scale battery is low and needs to be charged. As shown in the picture below, please use the USB cable and the charging head(daily mobile phone charging head 5A/1A is available) to charge



Warning

This device complies with part 15 of the FCC Rules. Operation is subject to the condition that this device does not cause harmful interference (1) this device may not cause harmful interference, and (2) this device must accept any interference received, including interference that may cause undesired operation.

Changes or modifications not expressly approved by the party responsible for compliance could void the user's authority to operate the equipment.

NOTE: This equipment has been tested and found to comply with the limits for a Class B digital device, pursuant to Part 15 of the FCC Rules. These limits are designed to provide reasonable protection against harmful interference in a residential installation. This equipment generates, uses and can radiate radio frequency energy and, if not installed and used in accordance with the instructions, may cause harmful interference to radio communications. However, there is no guarantee that interference will not occur in a particular installation.

If this equipment does cause harmful interference to radio or television reception, which can be determined by turning the equipment off and on, the user is encouraged to try to correct the interference by one or more of the following measures:

- Reorient or relocate the receiving antenna.
- Increase the separation between the equipment and receiver.
- Connect the equipment into an outlet on a circuit different from that to which the receiver is connected.
- Consult the dealer or an experienced radio/TV technician for help.

The device has been evaluated to meet general RF exposure requirement. The device can be used in portable exposure condition without restriction. FCC ID: 2ANDX-CS10A

App Usage

Download the APP

Search and download "Feeffit" in the App Store or Google play



Pairing and measurement



1. Open Feeffit, turn on Bluetooth (above Android 6.0 system requests to enable location access), click "+" and select the "Device Management"



2. Step on the scale with bare and dry feet



3. Tap the device name on the pairing page



5. Now, you can check the metrics and depth measurement report on the app



4. Keep standing on the scale and holding the handle for 10-15seconds. When your metrics appears on the APP, congratulations! you have successfully completed the measurement

Pair the scale with WiFi



1. After completing the first measurement, it will ask you whether need to pair the scale with WiFi, tap"OK"



2. Enter the correct WiFi password (Remark: This device only supports 2.4GHz WiFi, so please choose a stable 2.4GHz WiFi)



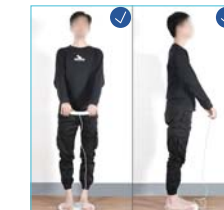
3. Wait for connecting scale to WiFi. At this time, the WiFi icon will flash on the scale



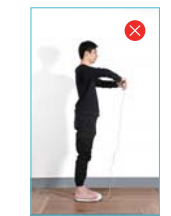
4. Congratulations! You have successfully paired your scale to WiFi

Note:
1. If you didn't pair the scale with WiFi after the first measurement, you can select the device with the WiFi logo in "Device Management" to configure the WiFi settings
2. Once you pair the scale with WiFi, you can always use WiFi to connect it without Bluetooth on

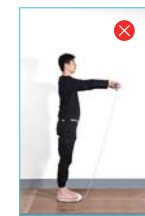
Test Posture



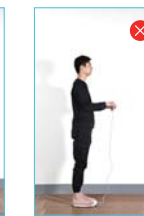
Stand straightly, make sure your arms are extended from your body and wear light clothes and don't let your arms touch your waist



Arms are bent inward



Arms are too high



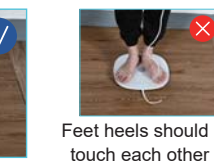
Arms are bent too low



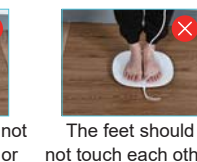
Wear too heavy clothes

Feet Posture

Step on scale barefoot. Don't let your feet and thighs touch each other



Feet heels should not touch each other or make feet turn in



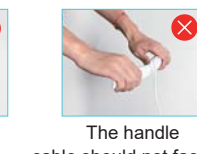
The feet should not touch each other

Hands Posture

Put your thumbs on the oval electrodes and the four fingers on the strip electrodes and hold them. Let the handle cable is facing down



Please do not hold it in fist



The handle cable should not face up

Display icon description

	Charging icon will light up when charging
	Wi-Fi icon will light up when WiFi connected
	Bluetooth icon will light up when Bluetooth connected
	Muscle mass icon
BMI	BMI icon
Fat	Body fat% icon
Lo	Low power reminder
EEr	Overload reminder