

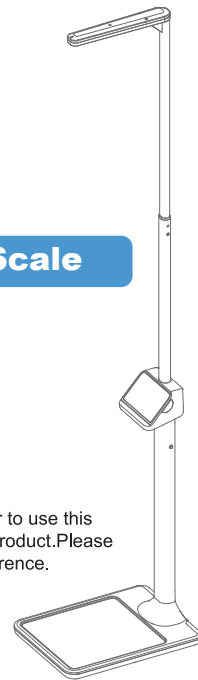
runcobo

Ultrasonic Height and Weight Body Fat Scale

User Manual

Model: CP30B

Thank you for choosing our intelligent Ultrasonic height and weight body fat analyzer. In order to use this product correctly and to ensure the accuracy of the measurement and the service life of the product. Please read this manual carefully before use. After reading it, please carefully collect it for future reference.

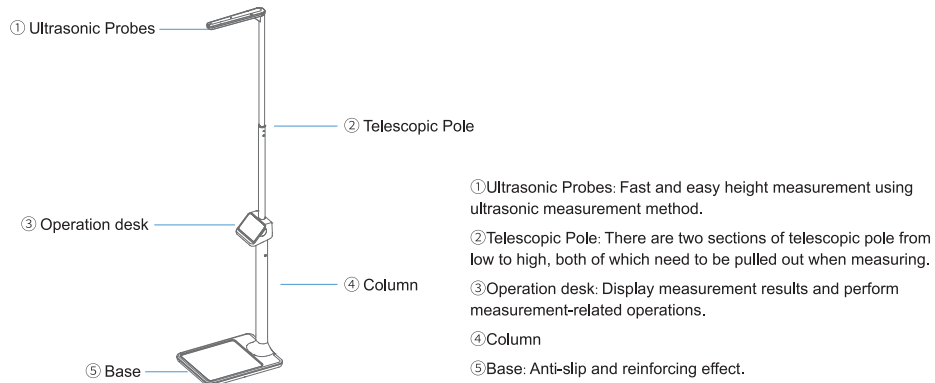


1.Product Introduction

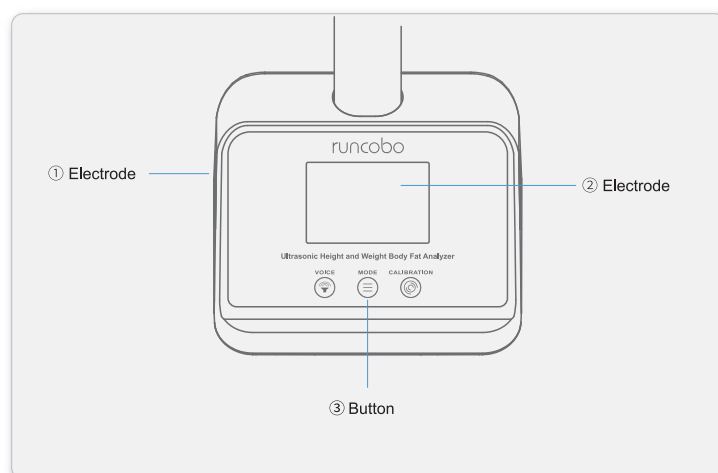
The Intelligent Ultrasonic Height and Weight Body Fat Analyzer(CP30B) is an intelligent height and weight body fat analyzer that can effectively help individual family members detect their height and weight data and various human health composition information in real time. The analyzer has Wifi and Bluetooth dual modes that can be combined. "Megafit" APP is used together to make the measurement process more convenient, fast and smart.

2.Product Description

• Product Appearance



• Key-Help



Volume adjustment: control the sound level of the measuring instrument.

Mode selection: switch to select "height and weight" or "height and body fat" measurement mode

Zero calibration: When the measurement is not accurate due to the movement of the device, press the zero calibration button before the measurement, and then get on the device to measure after the zero calibration icon is displayed.

• Icon Description



3. Battery icon: shows the current battery level of the meter.
4. WiFi icon: Display the measurement instrument network configuration status, no network configuration status display .
5. Bluetooth icon: Display the current Bluetooth connection status, no Bluetooth connection display .
6. Voice prompt: low volume, medium volume, high volume.
7. Zero calibration function prompt: .
8. Measurement mode tips: height and weight measurement mode Weight&Height Mode , only for measuring height and weight mode.
Height and body fat measurement mode Body Fat Mode , measuring human height and weight Human bioimpedance.

3. Product Parameters

Model	CP30B
Product Size	35.5 x 46 x 209 cm
Display	3.5 inch TFT LCD
Power supply	DC 5V/1A Power supply, 3.7V/2500mAh Rechargeable lithium battery
Operating current	<1A
Data Transfer	Bluetooth + WiFi Supported
Height Range	85-195cm
Weighing Range	5-220kg
Measurement indicators	Height, Weight, Human bioimpedance
Accessories	Screwdriver x 1, PWA 2.6*6mm screws x 4, M3.5*40mm Screws x 4, Type-C Data Cable x 1, PWA 3*16mm Screws x 4

4. Basic Features

- Ultrasonic wave auto height measurement
- Equipped with high-precision gravity sensors
- Height and weight/height and body fat dual mode measurement
- Built-in wifi/ Bluetooth dual communication module
- Body fat and various body composition were measured
- 3.5 inch TFT LCD Display
- Voice broadcasting function
- Auto weighing
- Auto zero tracking
- Low voltage/overload indication

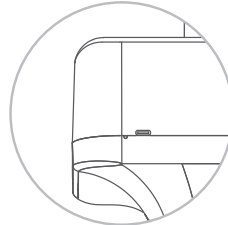
5. Other operations

- **Power supply**

DC/1A power supply, built-in 3.7V/2500mAh Rechargeable lithium battery.

- **Reset button**

If an abnormal phenomenon occurs, please insert a 2mm diameter needle-shaped object into the reset hole on the back of the display console and press and hold the reset button for 2 seconds, the position of reset key is shown in the figure.

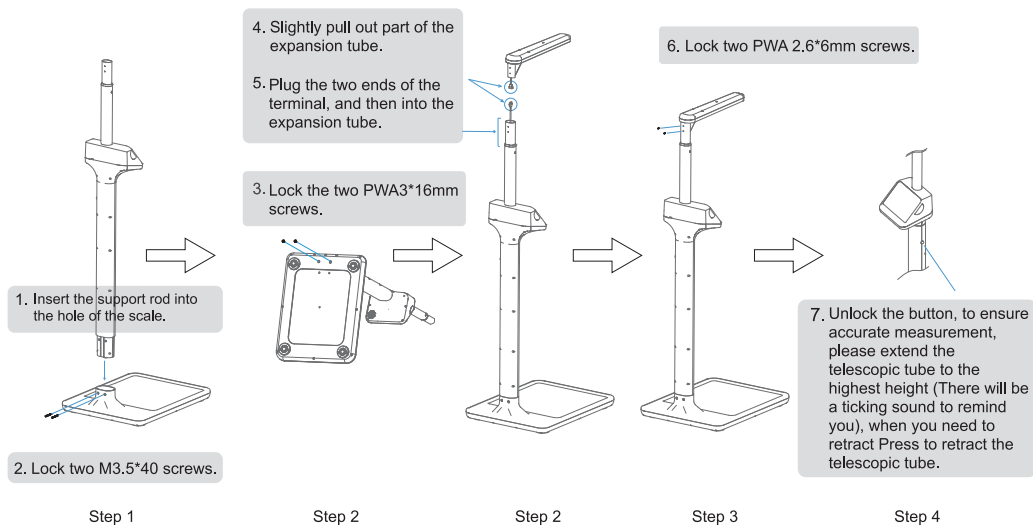


- **Restore factory settings**

If you need to reconfigure the device, you need to restore the factory settings by pressing and holding the "Volume Adjust" and "Mode Select" buttons for 3 seconds at the same time.

6. Instructions for use

- **Installation Instructions**



• APP pairing/Setting Wifi network

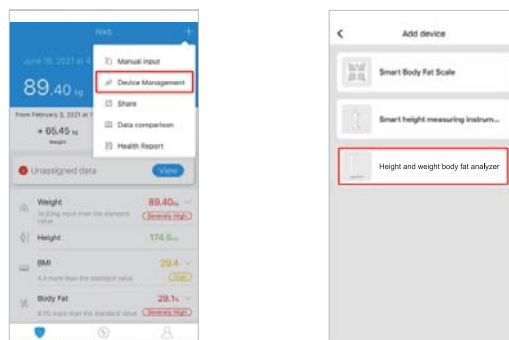
1. Download and install APP

iOS: Search for "Megafit" APP in the Apple App Market to download and install.

Android: Search for "Megafit" APP in Google play to download and install.

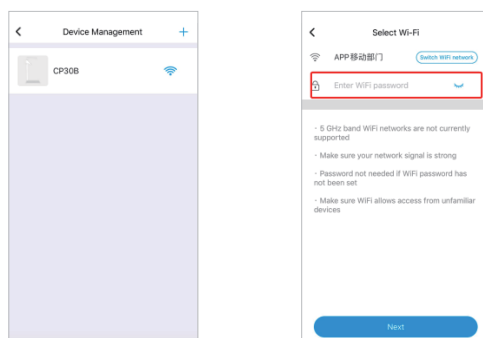
2. Paired connection

Open the APP, and select **【Device Management】** - **【Height and Weight Scale】** in the menu at the top right corner of the homepage. The app interface prompts you to complete the pairing.



3. Setting Wifi network

Select the successfully paired device in the **【Device Management】** interface, click to enter the configuration wifi network interface, and enter the Wifi network password according to the app interface prompts to complete the Wifi network configuration.

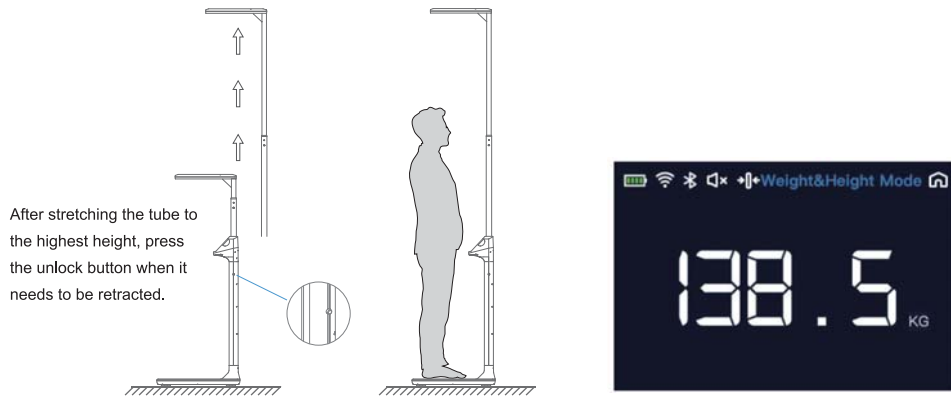


• APP pairing/Setting Wifi network

1. Place the intelligent ultrasonic height and weight body fat analyzer on a hard and flat floor. To ensure accurate measurement, please pull out the telescopic tube to the highest height (there will be a ticking sound to remind you).

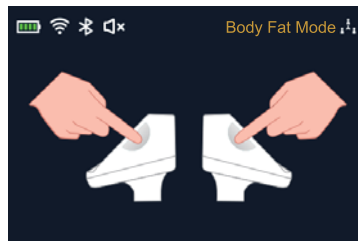
2. Wipe the scale surface with a dry soft cloth, and then barefoot on the scale, intelligent ultrasonic height and weight body fat analyzer will automatically start, if the first use or use after moving the product, first step on the scale, wait for the screen to light up, and then press the zero calibration key for a calibration, to ensure accurate weight measurement.

3. After standing on the scale according to voice prompts and screen prompts, keep your body balance, press the "mode selection" button on the display console to switch the measurement mode (without operation, the default is height and weight). Press the "Mode Select" button on the display console to switch the measurement mode (default is height and weight mode if no operation is done), wait for the weight value on the screen to stabilize, then complete the weight measurement and display the weight value on the LCD screen.



4. After the weight measurement, wait for the voice prompt to take the height measurement. Follow the voice and screen prompts, stand up straight, wait for the height measurement result number to remain stable on the screen, then the height measurement is completed, at this time, your height data will be displayed on the screen.

5. If the measurement mode is "height and body fat mode", after the height measurement is completed, there will be a voice prompt for body fat measurement for a moment. Follow the voice prompts and screen instructions, and touch the electrodes on the left and right sides of the operating table with both hands. Touch the electrodes on the left and right sides of the console. As shown in the figure.



6. After the measurement is complete, leave the scale for 15 seconds and the screen returns to the standby screen.



7. Points to note

- Please place the product on a firm, level surface before use. Avoid using it on top of carpet or other soft objects, which will affect the accuracy of the measurement figures.
- The product supports rechargeable battery, and can be used without plugging in external power supply. If the product is moved, please press the zero/calibration button and wait for the calibration to be completed before using.
- Do not use chemical reagents to scrub the scale, if necessary, use a damp soft cloth to wipe the surface of the product, scrubbing should prevent water from entering the scale body inside.
- This product is high precision electronic products. In order to ensure its good performance and service life, please do not jump on the intelligent ultrasonic height and weight body fat analyzer or make the product subjected to strong impact, avoid placing heavy objects on the ultrasonic height and weight body fat analyzer for a long time, and do not place the product in excessive hot and humid environment.
- To ensure the accuracy of the measurement data, please do not use this product in an environment of strong electromagnetic interference.
- The product is only subject to static pressure during normal weighing, when not in normal use and subject to impact, blow, shock or drop, it is easy to damage and will make it break and cause danger.

8. Maintenance Guide

- This product is a precision instrument, so be careful and do not knock, hit or drop the product.
- Hold still during weighing.
- Pay attention to keep the bearing surface dry, to prevent slipping and falling.
- Use a slightly damp cloth to clean the product, avoid water into the scale, do not use corrosive cleaning.
- Place horizontally in a dry and cool place.
- This product is designed for human body weighing height, can not be used for commercial weighing.

9. FCC WARNING

This device complies with part 15 of the FCC Rules. Operation is subject to the following two conditions: (1) this device may not cause harmful interference, and (2) this device must accept any interference received, including interference that may cause undesired operation.

Any changes or modifications not expressly approved by the party responsible for compliance could void the user's authority to operate the equipment.

NOTE: This equipment has been tested and found to comply with the limits for a Class B digital device, pursuant to Part 15 of the FCC Rules. These limits are designed to provide reasonable protection against harmful interference in a residential installation. This equipment generates, uses and can radiate radio frequency energy and, if not installed and used in accordance with the instructions, may cause harmful interference to radio communications. However, there is no guarantee that interference will not occur in a particular installation.

If this equipment does cause harmful interference to radio or television reception, which can be determined by turning the equipment off and on, the user is encouraged to try to correct the interference by one or more of the following measures:

- Reorient or relocate the receiving antenna.
- Increase the separation between the equipment and receiver.
- Connect the equipment into an outlet on a circuit different from that to which the receiver is connected.
- Consult the dealer or an experienced radio/TV technician for help.

The device has been evaluated to meet general RF exposure requirement. This equipment should be installed and operated with minimum distance between 11cm from the radiator and your body.

Equipment authorization.

(a) Consumer ISM equipment, unless otherwise specified, must be authorized under either the Supplier's Declaration of Conformity or the certification procedure prior to use or marketing. An application for certification shall be filed with a Telecommunication Certification Body (TCB), pursuant to the relevant sections in part 2, subpart J of this chapter.

(b) Consumer ultrasonic equipment generating less than 500 watts and operating below 90 kHz, and non-consumer ISM equipment shall be subject to Supplier's Declaration of Conformity, in accordance with the relevant sections of part 2, subpart J of this chapter.

(c) Grants of equipment authorization issued, as well as on-site certifications performed, before March 1, 1986, remain in effect and no further action is required.