

System Performance Check-2450MH

Communication System: UID 0, CW (0); Communication System Band: D2450 (2450.0 MHz);

Frequency: 2450 MHz;

Medium parameters used (interpolated): $f = 2450$ MHz; $\sigma = 1.78$ S/m; $\epsilon_r = 39.42$; $\rho = 1000$ kg/m³

Phantom section: Flat Section

DASY Configuration:

- Probe: EX3DV4 - SN7383; ConvF(7.65, 7.65, 7.65); Calibrated: 2022/1/12;
- Sensor-Surface: 1.4mm (Mechanical Surface Detection), $z = 1.0, 31.0$
- Electronics: DAE3 Sn427; Calibrated: 2022/4/12
- Phantom: SAM; Type: QD000P40CD; Serial: 1805
- DASY52 52.8.8(1222); SEMCAD X 14.6.10(7331)

Configuration/Body/Area Scan (7x9x1): Measurement grid: $dx=12$ mm, $dy=12$ mm

Maximum value of SAR (measured) = 21.3 W/kg

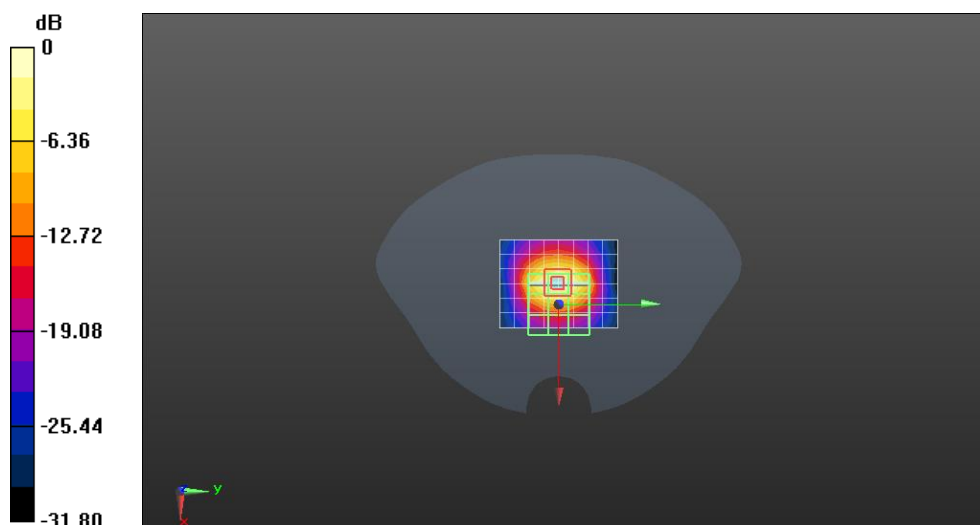
Configuration/Body/Zoom Scan (7x7x4)/Cube 0: Measurement grid: $dx=5$ mm, $dy=5$ mm, $dz=5$ mm

Reference Value = 113.8 V/m; Power Drift = -0.01 dB

Peak SAR (extrapolated) = 26.5 W/kg

SAR(1 g) = 12.5 W/kg; SAR(10 g) = 5.78 W/kg

Maximum value of SAR (measured) = 21.0 W/kg



0 dB = 21.3 W/kg = 13.28 dBW/kg

System Performance Check-2450MHz

Communication System: UID 0, CW (0); Communication System Band: D2450 (2450.0 MHz);

Frequency: 2450 MHz;

Medium parameters used (interpolated): $f = 2450$ MHz; $\sigma = 1.78$ S/m; $\epsilon_r = 39.42$; $\rho = 1000$ kg/m³

Phantom section: Flat Section

DASY Configuration:

- Probe: EX3DV4 - SN7383; ConvF(7.65, 7.65, 7.65); Calibrated: 2022/1/12;
- Sensor-Surface: 1.4mm (Mechanical Surface Detection), $z = 1.0, 31.0$
- Electronics: DAE3 Sn427; Calibrated: 2022/4/12
- Phantom: SAM; Type: QD000P40CD; Serial: 1805
- DASY52 52.8.8(1222); SEMCAD X 14.6.10(7331)

Configuration/Body/Area Scan (7x9x1): Measurement grid: $dx=12$ mm, $dy=12$ mm

Maximum value of SAR (measured) = 21.6 W/kg

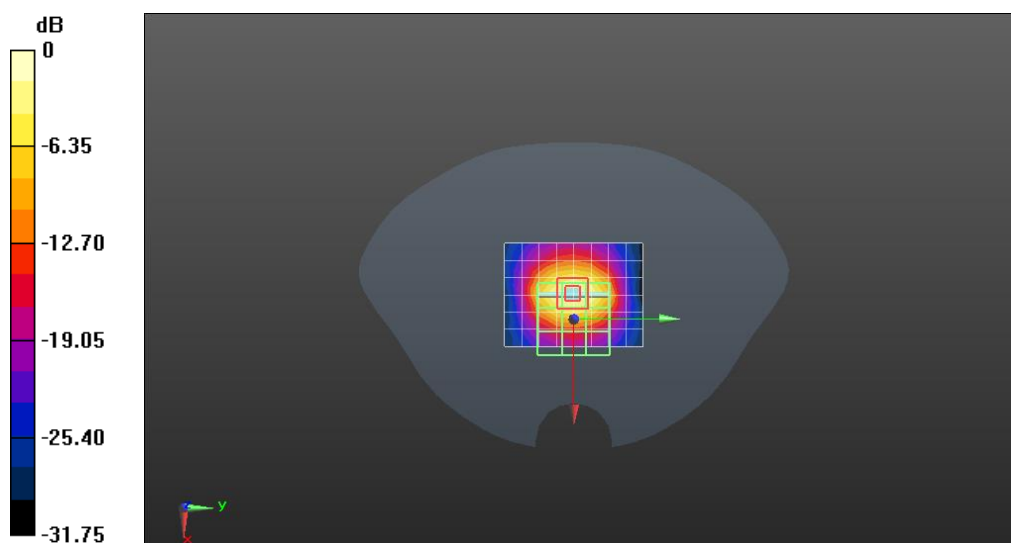
Configuration/Body/Zoom Scan (7x7x4)/Cube 0: Measurement grid: $dx=5$ mm, $dy=5$ mm, $dz=5$ mm

Reference Value = 115.3 V/m; Power Drift = 0.01 dB

Peak SAR (extrapolated) = 26.9 W/kg

SAR(1 g) = 12.8 W/kg; SAR(10 g) = 5.92 W/kg

Maximum value of SAR (measured) = 21.4 W/kg



0 dB = 21.6 W/kg = 13.34 dBW/kg

System Performance Check-2450MHz

Communication System: UID 0, CW (0); Communication System Band: D2450 (2450.0 MHz);

Frequency: 2450 MHz;

Medium parameters used (interpolated): $f = 2450$ MHz; $\sigma = 1.78$ S/m; $\epsilon_r = 39.42$; $\rho = 1000$ kg/m³

Phantom section: Flat Section

DASY Configuration:

- Probe: EX3DV4 - SN7383; ConvF(7.65, 7.65, 7.65); Calibrated: 2022/1/12;
- Sensor-Surface: 1.4mm (Mechanical Surface Detection), $z = 1.0, 31.0$
- Electronics: DAE3 Sn427; Calibrated: 2022/4/12
- Phantom: SAM; Type: QD000P40CD; Serial: 1805
- DASY52 52.8.8(1222); SEMCAD X 14.6.10(7331)

Configuration/Body/Area Scan (7x9x1): Measurement grid: $dx=12$ mm, $dy=12$ mm

Maximum value of SAR (measured) = 21.6 W/kg

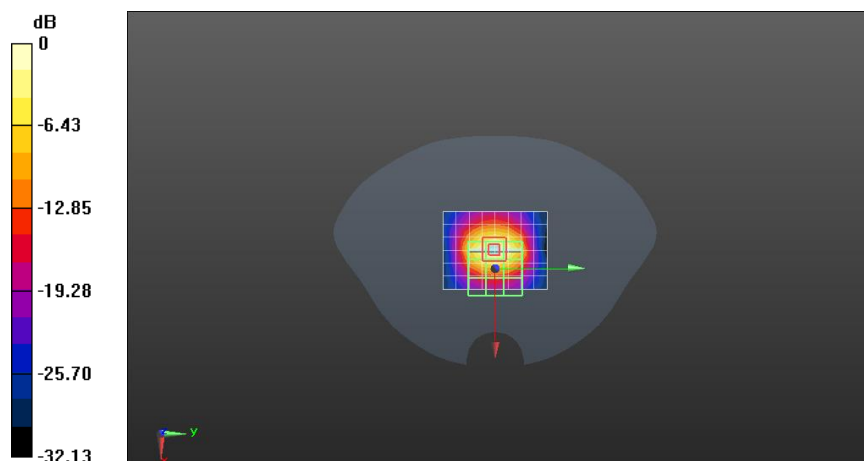
Configuration/Body/Zoom Scan (7x7x4)/Cube 0: Measurement grid: $dx=5$ mm, $dy=5$ mm, $dz=5$ mm

Reference Value = 114.6 V/m; Power Drift = -0.00 dB

Peak SAR (extrapolated) = 27.0 W/kg

SAR(1 g) = 12.8 W/kg; SAR(10 g) = 5.91 W/kg

Maximum value of SAR (measured) = 21.4 W/kg



0 dB = 21.6 W/kg = 13.34 dBW/kg

System Performance Check-5250MHz

Communication System: UID 0, CW (0); Communication System Band: D5GHz (5000.0 - 6000.0 MHz); Frequency: 5250 MHz;

Medium parameters used (interpolated): $f = 5250$ MHz; $\sigma = 4.75$ S/m; $\epsilon_r = 36.24$; $\rho = 1000$ kg/m³

Phantom section: Flat Section

DASY Configuration:

- Probe: EX3DV4 - SN7383; ConvF(5.05, 5.05, 5.05); Calibrated: 2022/1/12;
- Sensor-Surface: 1.4mm (Mechanical Surface Detection), $z = -19.0, 29.0$
- Electronics: DAE3 Sn427; Calibrated: 2022/4/12
- Phantom: SAM; Type: QD000P40CD; Serial: 1805
- DASY52 52.8.8(1222); SEMCAD X 14.6.10(7331)

Configuration/Body/Area Scan (7x7x1): Measurement grid: $dx=10$ mm, $dy=10$ mm

Maximum value of SAR (measured) = 20.2 W/kg

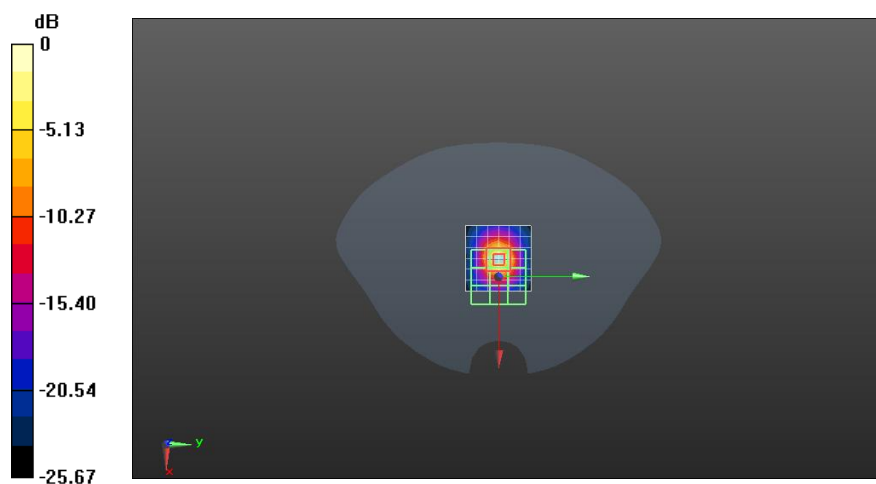
Configuration/Body/Zoom Scan (8x8x6)/Cube 0: Measurement grid: $dx=4$ mm, $dy=4$ mm, $dz=2$ mm

Reference Value = 73.11 V/m; Power Drift = -0.03 dB

Peak SAR (extrapolated) = 32.6 W/kg

SAR(1 g) = 8.04 W/kg; SAR(10 g) = 2.32 W/kg

Maximum value of SAR (measured) = 18.7 W/kg



0 dB = 20.2 W/kg = 13.05 dBW/kg

System Performance Check-5750MHz

Communication System: UID 0, CW (0); Communication System Band: D5GHz (5000.0 - 6000.0 MHz); Frequency: 5750 MHz;

Medium parameters used (interpolated): $f = 5750$ MHz; $\sigma = 5.41$ S/m; $\epsilon_r = 35.74$; $\rho = 1000$ kg/m³

Phantom section: Flat Section

DASY Configuration:

- Probe: EX3DV4 - SN7383; ConvF(5.05, 5.05, 5.05); Calibrated: 2022/1/12;
- Sensor-Surface: 1.4mm (Mechanical Surface Detection), $z = -19.0, 29.0$
- Electronics: DAE3 Sn427; Calibrated: 2022/4/12
- Phantom: SAM; Type: QD000P40CD; Serial: 1805
- DASY52 52.8.8(1222); SEMCAD X 14.6.10(7331)

Configuration/Body/Area Scan (7x7x1): Measurement grid: $dx=10$ mm, $dy=10$ mm

Maximum value of SAR (measured) = 18.7 W/kg

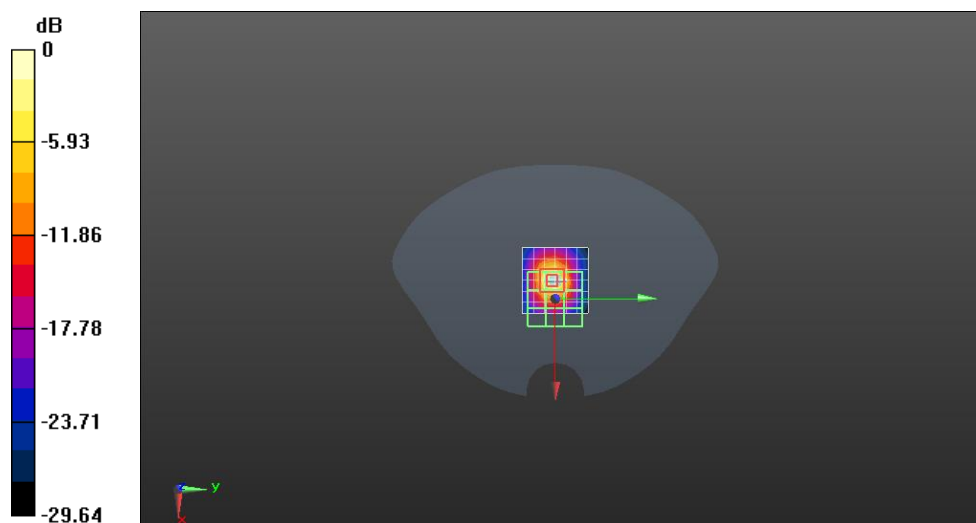
Configuration/Body/Zoom Scan (8x8x6)/Cube 0: Measurement grid: $dx=4$ mm, $dy=4$ mm, $dz=2$ mm

Reference Value = 66.72 V/m; Power Drift = -0.06 dB

Peak SAR (extrapolated) = 33.6 W/kg

SAR(1 g) = 7.74 W/kg; SAR(10 g) = 2.22 W/kg

Maximum value of SAR (measured) = 18.9 W/kg



0 dB = 18.7 W/kg = 12.72 dBW/kg