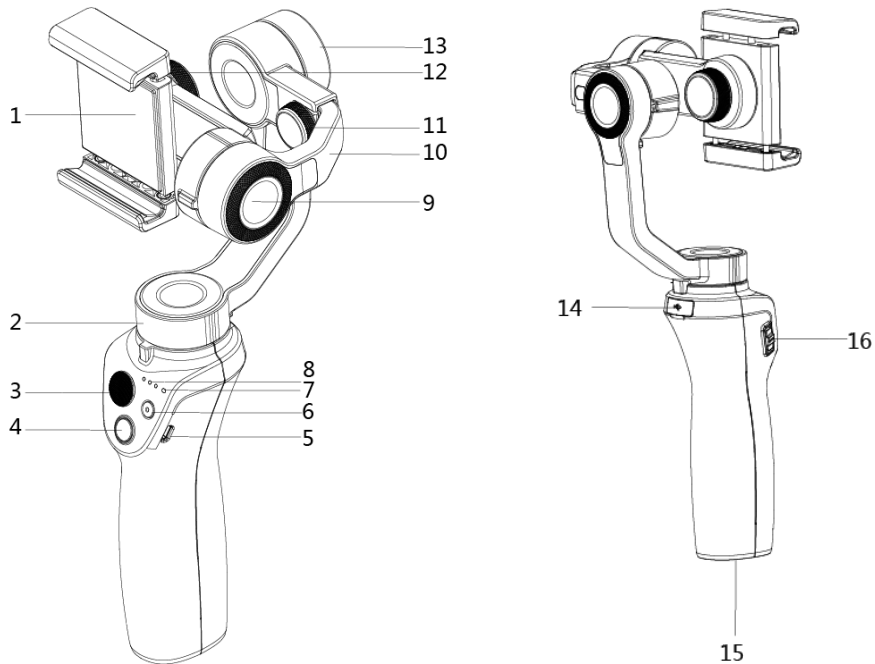


# Osmo Mobile 2

The OSMO™ Mobile 2 is an advanced gimbal that turns your mobile phone into a smart motion camera by stabilizing it while in motion. It is easy to use, and powerful features such as ActiveTrack and Motion Timelapse are available through the DJI GO app.



1. Mobile Phone Holder
2. Pan Motor
3. Joystick
4. Power/Mode Button
5. Charging Port (Micro USB)
6. Shutter/Record Button
7. System Status LED
8. Battery Level Indicators
9. Tilt Motor
10. Adjustable Arm
11. Balance Adjustment Knob
12. Holder Lock Knob
13. Roll Motor
14. USB Port
15. External Device Mount
16. Zoom In/Out Switch

# 1. Install the DJI GO App

Search for 'DJI GO' on the App Store or Google Play, and install the app on your mobile phone.



DJI GO supports iOS 8.0 (or later) and Android 4.4 (or later).

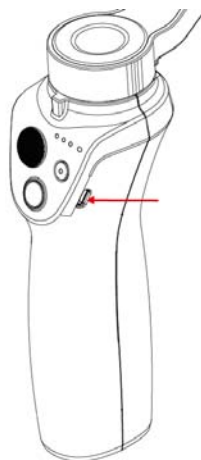
# 2. Charging the Battery

To charge the Osmo Mobile 2, connect the USB adapter (not included) to the charging port using the provided power cable.

The battery is fully charged when the system status LED become solid white.

USB Adapter Charging time : 2 hours and 35 minutes ( when charging at 2 A)

Max Run-time: 15 hours

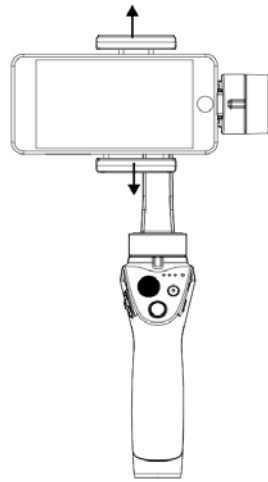


The Osmo Mobile 2 supports charging mobile device.

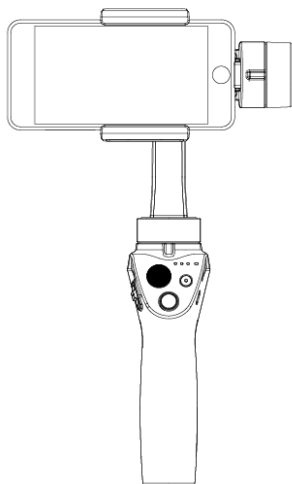
# 3. Mount and Balance the Mobile Phone

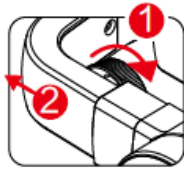
Ensure to mount and balance the mobile phone with Osmo Mobile 2 powered off.

Place the mobile phone in the mobile phone holder while pulling out the holder.



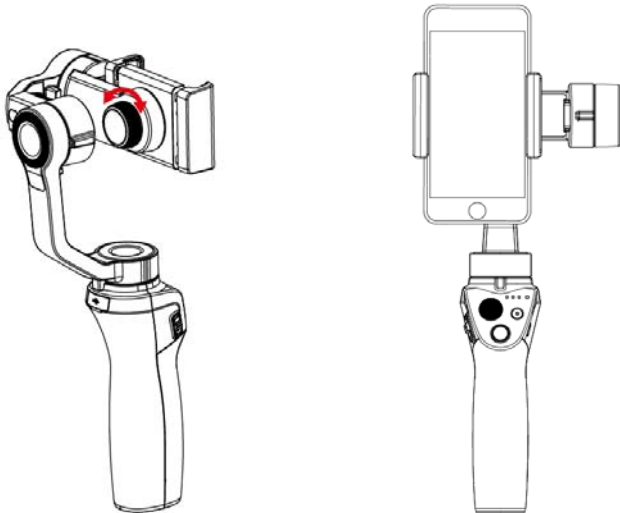
The system is balanced if the mobile phone remains level when released, balanced only by the gimbal.





If the roll axis tilts to the left, pull out the arm until the roll axis remains level.

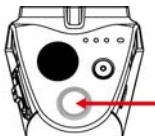
Osmo Mobile 2 supports mount the mobile phone vertically and horizontally. To mount the mobile phone vertically, loosen the holder lock knob and adjust the mobile device holder to mount and balance the mobile device.



## 4. Connect to the DJI GO App



Enable Bluetooth on your mobile phone



To Power On: Press and hold the button

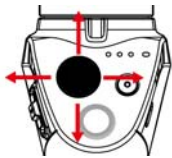


Launch the DJI GO app and then follow the instructions to connect to the Osmo Mobile 2.



Activate the Osmo Mobile 2 when using it for the first time. This requires an internet connection.

## 5. Controls



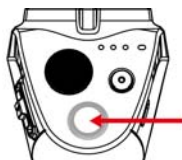
Use the joystick to pan or tilt the mobile phone.



Position the mobile phone directly by hand.



Press once to start/stop recording or take a photo (depending the settings in the DJI GO app).



Tap once to switch the follow mode. Tap twice to center the mobile phone. Tap three times to switch between the mobile phone's front and rear cameras.

# Specifications

- Gimbal

Name: OSMO MOBILE 2

Model: OM170

Dimensions: 295mm×113mm×72mm(folded)

Weight: 410g

Consumption:1.2W

Angular Vibration Range:±0.03°

Controllable RangePan: ±160°;Roll: ±25°;Tilt: ±160°

Mechanical RangePan:±170°;Roll:-90°to +70°; Tilt:±170°

Max Controllable Speed:120°/s

Mobile Phone Width Range:58.6 mm-85 mm

- Wireless

Mode Bluetooth Low Energy:4.0

- Intelligent Battery

Mode: I2ICR19/66

Type: 18650 LiPo

Capacity: 2600mAh

Energy: 18Wh

Voltage: 3.6V

Charging Temperature: 5°Cto 40°C

Operating Temperature: 0°Cto 45°C

# Compliance Information

## FCC Compliance Notice

This device complies with Part 15 of the FCC Rules. Operation is subject to the following two conditions: (1) This device may not cause harmful interference, and (2) This device must accept any interference received, including interference that may cause undesired operation.

Any changes or modifications not expressly approved by the party responsible for compliance could void the user's authority to operate the equipment.

This equipment has been tested and found to comply with the limits for a Class B digital device, pursuant to part 15 of the FCC Rules. These limits are designed to provide reasonable protection against harmful interference in a residential installation. This equipment generates, uses and can radiate radio frequency energy and, if not installed and used in accordance with the instructions, may cause harmful interference

to radio communications. However, there is no guarantee that interference will not occur in a particular installation. If this equipment does cause harmful interference to radio or television reception, which can be determined by turning the equipment off and on, the user is encouraged to try to correct the interference by one or more of the following measures:

- Reorient or relocate the receiving antenna.
- Increase the separation between the equipment and receiver.
- Connect the equipment into an outlet on a circuit different from that to which the receiver is connected.
- Consult the dealer or an experienced radio/TV technician for help.

### **RF Exposure Information**

This equipment complies with FCC radiation exposure limits set forth for an uncontrolled environment.

This transmitter must not be co-located or operating in conjunction with any other antenna or transmitter.

### **ISED RSS Warning**

This device complies with licence-exempt RSS standard (s).

Operation is subject to the following two conditions: (1) this device may not cause interference, and (2) this device must accept any interference, including interference that may cause undesired operation of the device.

Le présent appareil est conforme aux CNR d'Industrie Canada applicables aux appareils radio exempts de licence.

L'exploitation est autorisée aux deux conditions suivantes:

- (1) l'appareil ne doit pas produire de brouillage, et
- (2) l'utilisateur de l'appareil doit accepter tout brouillage radioélectrique subi, même si le brouillage est susceptible d'en compromettre le fonctionnement.

### **ISED Radiation Exposure Statement:**

This equipment complies with ISED RF radiation exposure limits set forth for an uncontrolled environment. This transmitter must not be co-located or operating in conjunction with any other antenna or transmitter.

Any Changes or modifications not expressly approved by the party responsible for compliance could void the user's authority to operate the equipment.

Cet appareil est

conforme aux limites d'exposition de rayonnement RF ISED établies pour un environnement non contrôlé.

Cet émetteur ne doit pas être co-implanté ou fonctionner en conjonction avec toute autre antenne ou transmetteur.

### **KCC Warning Message**

“해당 무선설비는 운용 중 전파 혼신 가능성이 있으므로 인명 안전과 관련된 서비스는 할 수 없습니다.”

“해당 무선설비는 운용 중 전파 혼신 가능성이 있음”

**EU Compliance Statement** SZ DJI Osmo Technology Co.,Ltd. hereby declares that this device is in compliance with the essential requirements and other relevant provisions of the Directive 2014/53/EU.

A copy of the EU Declaration of Conformity is available online at [www.dji.com/euro-compliance](http://www.dji.com/euro-compliance)

EU contact address: DJI GmbH, Industriestrasse. 12, 97618, Niederlauer, Germany

**Declaración de cumplimiento UE** SZ DJI Osmo Technology Co.,Ltd. por la presente declara que este dispositivo cumple los requisitos básicos y el resto de provisiones relevantes de la Directiva 2014/53/EU.

Hay disponible online una copia de la Declaración de conformidad UE en [www.dji.com/euro-compliance](http://www.dji.com/euro-compliance)

Dirección de contacto de la UE:

DJI GmbH, Industriestrasse. 12, 97618, Niederlauer, Germany

**EU-verklaring van overeenstemming** SZ DJI Osmo Technology Co.,Ltd. verklaart hierbij dat dit apparaat voldoet aan de essentiële vereisten en andere relevante bepalingen van Richtlijn 2014/53/EU.

De EU-verklaring van overeenstemming is online beschikbaar op [www.dji.com/euro-compliance](http://www.dji.com/euro-compliance)

Contactadres EU: DJI GmbH, Industriestrasse. 12, 97618, Niederlauer, Germany

**Declaração de conformidade da UE** SZ DJI Osmo Technology Co.,Ltd. declara, através deste documento, que este dispositivo está em conformidade com os requisitos essenciais e outras disposições relevantes da Diretiva 2014/53/EU.

Existe uma cópia da Declaração de conformidade da UE disponível online em [www.dji.com/euro-compliance](http://www.dji.com/euro-compliance)

Endereço de contacto na UE:

DJI GmbH, Industriestrasse. 12, 97618, Niederlauer, Germany



**Dichiarazione di conformità UE** SZ DJI Osmo Technology Co.,Ltd. dichiara che il presente dispositivo è conforme ai requisiti essenziali e alle altre disposizioni rilevanti della direttiva 2014/53/EU.

Una copia della dichiarazione di conformità UE è disponibile online all'indirizzo Web [www.dji.com/euro-compliance](http://www.dji.com/euro-compliance)

Indirizzo di contatto UE:

DJI GmbH, Industriestrasse. 12, 97618, Niederlauer, Germany



**Déclaration de conformité UE** : Par la présente, SZ DJI Osmo Technology Co.,Ltd. déclare que cet appareil est conforme aux principales exigences et autres clauses pertinentes de la directive européenne 2014/53/EU.

Une copie de la déclaration de conformité UE est disponible sur le site [www.dji.com/euro-compliance](http://www.dji.com/euro-compliance)

Adresse de contact pour l'UE :

DJI GmbH, Industriestrasse. 12, 97618, Niederlauer, Germany

**EU-Compliance:** Hiermit erklärt SZ DJI Osmo Technology Co.,Ltd. , dass dieses Gerät den wesentlichen Anforderungen und anderen einschlägigen Bestimmungen der EU-Richtlinie 2014/53/EU entspricht.

Eine Kopie der EU-Konformitätserklärung finden Sie online auf [www.dji.com/euro-compliance](http://www.dji.com/euro-compliance).

Kontaktadresse innerhalb der EU:

DJI GmbH, Industriestrasse. 12, 97618, Niederlauer, Germany

**CAUTION: RISK OF EXPLOSION IF BATTERY IS REPLACED BY AN INCORRECT TYPE. DISPOSE OF USED BATTERIES ACCORDING TO THE INSTRUCTIONS**

Environmentally friendly disposal

Old electrical appliances must not be disposed of together with the residual waste, but



have to be disposed of separately. The disposal at the communal collecting point via private persons is for free. The owner of old appliances is responsible to bring the appliances to these collecting points or to similar collection points. With this little personal effort, you contribute to recycle valuable raw materials and the treatment of toxic substances.

**Thailand Warning message**

เครื่องโทรคมนาคมและอุปกรณ์นี้มีความสอดคล้องตามข้อกำหนดของกททช.

### **Mexico Warning message**

“La operación de este equipo está sujeta a las siguientes dos condiciones: (1) es posible que este equipo o dispositivo no cause interferencia perjudicial y (2) este equipo o dispositivo debe aceptar cualquier interferencia, incluyendo la que pueda causar su operación no deseada.”

### **Brazil Warning message**

Este equipamento opera em caráter secundário, isto é, não tem direito a proteção contra interferência prejudicial, mesmo de estações do mesmo tipo, e não pode causar interferência a sistemas operando em caráter primário

“해당 무선설비는 운용 중 전파혼신 가능성이 있음”



인증받은자의 상호 : SZ DJI Osmo Technology Co.,Ltd.

제품명 / 모델명 : 특정소출력무선기기(무선데이터통신 시스템용무선기기)/OM170

제조사 및 제조국가 : SZ DJI Osmo Technology Co.,Ltd./China

제조년월 : 2017.03

인증번호 : MSIP-CRM-dji-OM170

해당 무선설비는 전파혼신 가능성이 있으므로 인명안전과 관련된 서비스는 할 수 없음