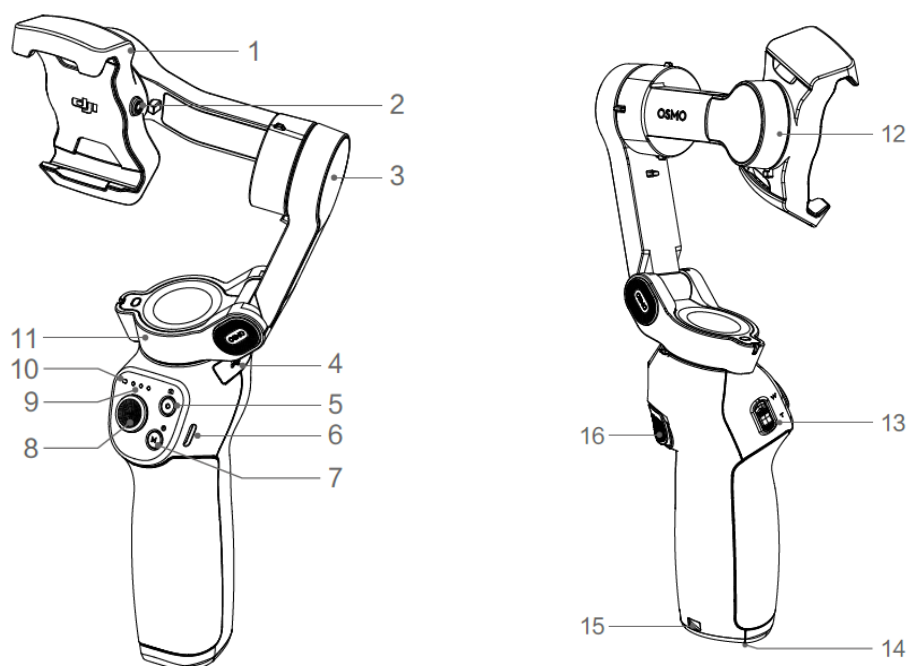


# Osmo Mobile 3 Quick Start Guide



1. Phone Holder
2. M3\*0.5 Hole
3. Tilt Motor
4. USB-A Port
5. Shutter/Record Button
6. Charging Port (USB-C)
7. M Button
8. Joystick
9. Battery Level Indicators
10. System Status LED
11. Pan Motor
12. Roll Motor
13. Zoom Slider
14. 1/4" Port
15. Lanyard Hole
16. Trigger

## 1. Installing the DJI Mimo App

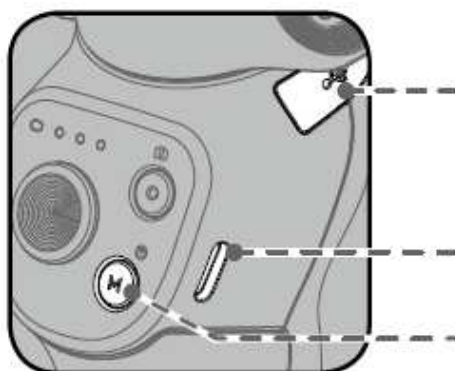
Search for 'DJI Mimo' on the App Store or Google Play, and install the app on your mobile phone.



The Android version of DJI Mimo is compatible with Android v6.0 and later. The iOS version of DJI Mimo is compatible with iOS v10.0 and later.

## 2. Powering On/Off/Charging

- When Osmo Mobile 3 is powered off, press the button to check battery level, press and hold to power on/off.
- To charge the Osmo Mobile 3, connect the USB adapter (not included) to the charging port using the provided power cable. The battery is fully charged when the Battery Level Indicators turn solid on.
- USB Adapter Charging Time: 3.5 hours (when charging at 2 A) Max Run-Time: 15 hours\*
- The Osmo Mobile 3's USB-A port is capable of charging mobile phones. Connect the USB port to your mobile phone using a standard Micro USB cable to start charging when the Osmo Mobile 3 is powered on. Press the M button once to start charging when the Osmo Mobile 3 is powered off.

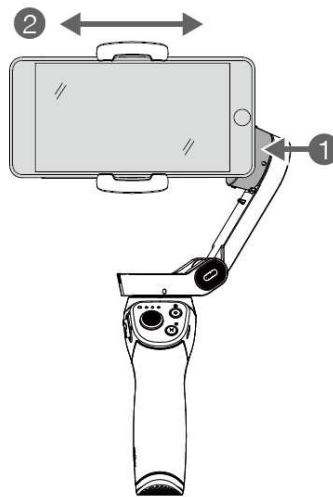


\* Max run-time was tested with the gimbal balanced and held steadily. This value should be taken for reference only.

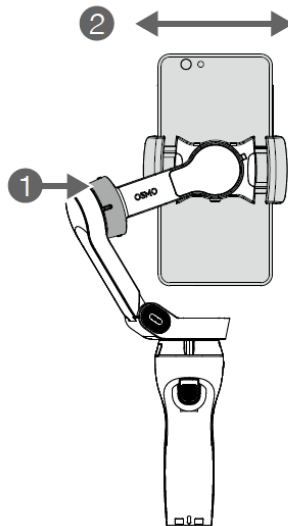
### 3. Mounting and Balancing a Mobile Phone

Make sure to only mount and balance a mobile phone while the Osmo Mobile 3 powered off. Place the mobile phone in the mobile phone holder while pulling out the holder. Make sure the DJI logo of the phone holder is upright.

Hold the tilt arm. Adjust the position of the mobile phone. The tilt axis is balanced if the mobile phone remains still when released.



Rotate the mobile phone to portrait mode. Hold the tilt arm. Pull the mobile phone holder left or right to balance. The roll axis is balanced if the mobile phone remains level when released.



## 4. Connecting to the DJI Mimo App



Enable Bluetooth on your mobile phone.



Power on the Osmo Mobile 3.



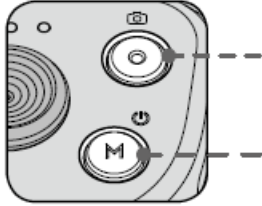
Launch the DJI Mimo app and then follow the instructions to connect to the Osmo Mobile 3.

Activate the Osmo Mobile 3 when using it for the first time. This requires an internet connection.

## 5. Operations



Use the joystick to pan or tilt the mobile phone.



**Shutter/Record Button:**

Press once to start/stop recording or take a photo. Press and hold for burst capture.\*

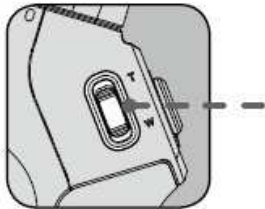
**M Button**

Tap once to switch between photo and video mode.

Tap twice to bring out shortcut menu (in this case, push the joystick to select from menu instead of control gimbal attitude), tap once to exit menu.

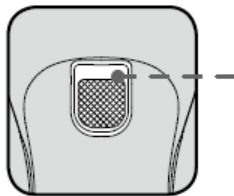
Tap three times to switch between horizontal or portrait mode\*.

Tap and hold to power on/off.



Push to zoom in or out.

\*Horizontal and portrait mode can be switched by hand.



Tap and hold to enter lock mode, release to exit.

Tap once to start/stop ActiveTrack.

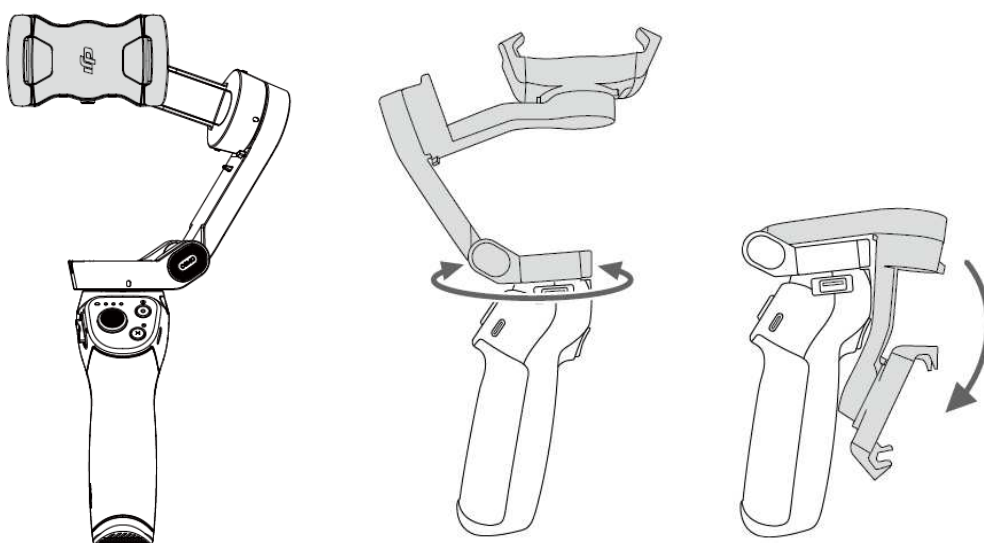
Tap twice to center the mobile phone.

Tap three times to switch between the mobile phone's front and rear cameras.

Tap once and then hold to enter sport mode, release to exit.

\* Mobile phone camera can be controlled by Osmo Mobile 3 without DJI Mimo after connecting the Bluetooth of the mobile phone (mobile phone camera can be control by volume button).

## Storage



## Specifications

General	
Name	OSMO MOBILE 3
Model	OF100
Dimensions	286×126×98 mm (Unfold) 157×130×46 mm (folded)
Weight	405 g
Consumption	1.2 W (steady and balanced status)
Mechanical Range	Pan: ±170°; Roll: -85° to +252°; Tilt: -104° to +235°
Max Controllable Speed	120°/s
Payload	Weight: 200±30 g Dimension: Length ≤ 162 mm Diagonal ≤ 180 mm Thickness ≤ 9.5 mm Width Range: 59 – 88 mm
Wireless	
Mode	Bluetooth Low Energy 5.0
Transmitter Power (EIRP)	<4 dBm
Operation Frequency Range	2400~2483.5 MHz
Battery	
Type	18650 Li
Capacity	2600 mAh

Energy	18 Wh
Voltage	7.2 V
Charging Temperature	41° to 104° F (5° to 40° C)
Operating Temperature	32° to 104° F (0° to 40° C)

## Compliance Information

### FCC Compliance Notice

This device complies with Part 15 of the FCC Rules. Operation is subject to the following two conditions: (1) This device may not cause harmful interference, and (2) This device must accept any interference received, including interference that may cause undesired operation.

Any changes or modifications not expressly approved by the party responsible for compliance could void the user's authority to operate the equipment.

This equipment has been tested and found to comply with the limits for a Class B digital device, pursuant to part 15 of the FCC Rules. These limits are designed to provide reasonable protection against harmful interference in a residential installation. This equipment generates, uses and can radiate radio frequency energy and, if not installed and used in accordance with the instructions, may cause harmful interference to radio communications. However, there is no guarantee that interference will not occur in a particular installation. If this equipment does cause harmful interference to radio or television reception, which can be determined by turning the equipment off and on, the user is encouraged to try to correct the interference by one or more of the following measures:

- Reorient or relocate the receiving antenna.
- Increase the separation between the equipment and receiver.
- Connect the equipment into an outlet on a circuit different from that to which the receiver is connected.
- Consult the dealer or an experienced radio/TV technician for help.

### RF Exposure Information

[This equipment complies with FCC radiation exposure limits set forth for an uncontrolled environment. The device can be used in portable exposure condition without restriction.](#)

### ISED Warning

This device contains licence-exempt transmitter(s)/receiver(s) that comply with Innovation, Science and Economic Development Canada's licence-exempt RSS(s). Operation is subject to the following two conditions: (1) This device may not cause interference. (2) This device must accept any interference, including interference that may cause undesired operation of the device.

L'émetteur/récepteur exempt de licence contenu dans le présent appareil est conforme aux CNR d'Innovation, Sciences et Développement économique Canada applicables aux appareils radio

exempts de licence. L'exploitation est autorisée aux deux conditions suivantes : (1) L'appareil ne doit pas produire de brouillage; (2) L'appareil doit accepter tout brouillage radioélectrique subi, même si le brouillage est susceptible d'en compromettre le fonctionnement.

This equipment complies with ISED radiation exposure limits set forth for an uncontrolled environment. End user must follow the specific operating instructions for satisfying RF exposure compliance. This transmitter must not be co-located or operating in conjunction with any other antenna or transmitter. The portable device is designed to meet the requirements for exposure to radio waves established by the ISED.

Cet équipement est conforme aux limites d'exposition aux rayonnements ISED établies pour un environnement non contrôlé. L'utilisateur final doit suivre les instructions spécifiques pour satisfaire les normes. Cet émetteur ne doit pas être co-implanté ou fonctionner en conjonction avec toute autre antenne ou transmetteur. Le dispositif portable est conçu pour répondre aux exigences d'exposition aux ondes radio établie par le développement énergétique DURABLE.

This equipment complies with RSS - 102 radiation exposure limits set forth for an uncontrolled environment.

Cet équipement est conforme aux limites d'exposition aux radiations CNR - 102 établies pour un environnement non contrôlé.

#### **KCC Warning Message**

“해당무선설비는 운용 중 전파혼신 가능성이 있으므로 인명안전과 관련된 서비스는 할 수 없습니다.”

“해당 무선설비는 운용 중 전파혼신 가능성이 있음”

#### **NCC Warning Message**

低功率電波輻射性電機管理辦法

第十二條 經型式認證合格之低功率射頻電機，非經許可，公司、商號或使用者均不得擅自變更頻率、加大功率或變更原設計之特性及功能。

第十四條 低功率射頻電機之使用不得影響飛航安全及干擾合法通信；經發現有干擾現象時，應改善至無干擾時方得繼續使用。前項合法通信，指依電信法規定作業之無線電通信。低功率射頻電機須忍受合法通信或工業、科學及醫療用電波輻射性電機設備之干擾。

**EU Compliance Statement:** SZ DJI Osmo Technology Co., Ltd. hereby declares that this device is in compliance with the essential requirements and other relevant provisions of the Directive 2014/53/EU.

A copy of the EU Declaration of Conformity is available online at [www.dji.com/euro-compliance](http://www.dji.com/euro-compliance)

EU contact address: DJI GmbH, Industriestrasse 12, 97618, Niederlauer, Germany

**Declaración de cumplimiento UE:** SZ DJI Osmo Technology Co., Ltd. por la presente declara que este dispositivo cumple los requisitos básicos y el resto de provisiones relevantes de la Directiva 2014/53/EU.

Hay disponible online una copia de la Declaración de conformidad UE en [www.dji.com/euro-compliance](http://www.dji.com/euro-compliance)



[compliance](#)

Dirección de contacto de la UE: DJI GmbH, Industriestrasse 12, 97618, Niederlauer, Germany

**EU-verklaring van overeenstemming:** SZ DJI Osmo Technology Co., Ltd. verklaart hierbij dat dit apparaat voldoet aan de essentiële vereisten en andere relevante bepalingen van Richtlijn 2014/53/EU.

De EU-verklaring van overeenstemming is online beschikbaar op [www.dji.com/euro-compliance](http://www.dji.com/euro-compliance)

Contactadres EU: DJI GmbH, Industriestrasse 12, 97618, Niederlauer, Germany

**Declaração de conformidade da UE:** A SZ DJI Osmo Technology Co., Ltd. declara, através deste documento, que este dispositivo está em conformidade com os requisitos essenciais e outras disposições relevantes da Diretiva 2014/53/EU.

Existe uma cópia da Declaração de conformidade da UE disponível online em [www.dji.com/euro-compliance](http://www.dji.com/euro-compliance)

Endereço de contacto na UE: DJI GmbH, Industriestrasse 12, 97618, Niederlauer, Germany

**Dichiarazione di conformità UE:** SZ DJI Osmo Technology Co., Ltd. dichiara che il presente dispositivo è conforme ai requisiti essenziali e alle altre disposizioni rilevanti della direttiva 2014/53/EU.

Una copia della dichiarazione di conformità UE è disponibile online all'indirizzo Web [www.dji.com/euro-compliance](http://www.dji.com/euro-compliance)

Indirizzo di contatto UE: DJI GmbH, Industriestrasse 12, 97618, Niederlauer, Germany

**Déclaration de conformité UE :** Par la présente, SZ DJI Osmo Technology Co., Ltd. déclare que cet appareil est conforme aux principales exigences et autres clauses pertinentes de la directive européenne 2014/53/EU.

Une copie de la déclaration de conformité UE est disponible sur le site [www.dji.com/euro-compliance](http://www.dji.com/euro-compliance)

Adresse de contact pour l'UE : DJI GmbH, Industriestrasse 12, 97618, Niederlauer, Germany

**EU-Compliance:** Hiermit erklärt SZ DJI Osmo Technology Co., Ltd., dass dieses Gerät den wesentlichen Anforderungen und anderen einschlägigen Bestimmungen der EU-Richtlinie 2014/53/EU entspricht.

Eine Kopie der EU-Konformitätserklärung finden Sie online auf [www.dji.com/euro-compliance](http://www.dji.com/euro-compliance).

Kontaktadresse innerhalb der EU: DJI GmbH, Industriestrasse 12, 97618, Niederlauer, Germany



CAUTION: RISK OF EXPLOSION IF BATTERY IS REPLACED BY AN INCORRECT TYPE. DISPOSE OF USED BATTERIES ACCORDING TO THE INSTRUCTIONS

#### Environmentally friendly disposal



Old electrical appliances must not be disposed of together with the residual waste, but have to be disposed of separately. The disposal at the communal collecting point via private persons is for free. The owner of old appliances is responsible to bring the appliances to these collecting points or to similar collection points. With this little personal effort, you contribute to recycle valuable raw materials and the treatment of toxic substances.

#### Umweltfreundliche Entsorgung



Elektro-Altgeräte dürfen nicht mit gewöhnlichem Abfall entsorgt werden und müssen separat entsorgt werden. Die Entsorgung an kommunalen Sammelstellen ist für Privatpersonen kostenlos. Die Eigentümer der Altgeräte sind für den Transport zu den Sammelstellen verantwortlich. Durch diesen geringen Aufwand können Sie zur Wiederverwertung von wertvollen Rohmaterialien beitragen und dafür sorgen, dass umweltschädliche und giftige Substanzen ordnungsgemäß unschädlich gemacht werden.



#### Tratamiento de residuos responsable con el medio ambiente

Los aparatos eléctricos viejos no pueden desecharse junto con los residuos orgánicos, sino que deben ser desechados por separado. Existen puntos limpios donde los ciudadanos pueden dejar estos aparatos gratis. El propietario de los aparatos viejos es responsable de llevarlos a estos puntos limpios o similares puntos de recogida. Con este pequeño esfuerzo estás contribuyendo a reciclar valiosas materias primas y al tratamiento de residuos tóxicos.

#### Mise au rebut écologique



Les appareils électriques usagés ne doivent pas être éliminés avec les déchets résiduels. Ils doivent être éliminés séparément. La mise au rebut au point de collecte municipale par l'intermédiaire de particuliers est gratuite. Il incombe au propriétaire des appareils usagés de les apporter à ces points de collecte ou à des points de collecte similaires. Avec ce petit effort personnel, vous contribuez au recyclage de matières premières précieuses et au traitement des substances toxiques.

#### Smaltimento ecologico



I vecchi dispositivi elettrici non devono essere smaltiti insieme ai rifiuti

residui, ma devono essere smaltiti separatamente. Lo smaltimento da parte di soggetti privati presso i punti di raccolta pubblici è gratis. È responsabilità del proprietario dei vecchi dispositivi portarli presso tali punti di raccolta o punti di raccolta analoghi. Grazie a questo piccolo impegno personale contribuirete al riciclo di materie prime preziose e al corretto trattamento di sostanze tossiche.

#### Milieuvriendelijk afvoeren



Oude elektrische apparaten mogen niet worden weggegooid samen met het restafval, maar moeten afzonderlijk worden afgevoerd. Afvoeren via het gemeentelijke inzamelpunt is gratis voor particulieren. De eigenaar van oude toestellen is verantwoordelijk voor het inleveren van de apparaten op deze of vergelijkbare inzamelpunten. Met deze kleine persoonlijke inspanning lever je een bijdrage aan de recycling van waardevolle grondstoffen en de verwerking van giftige stoffen.

#### Eliminação ecológica



Os aparelhos elétricos antigos não podem ser eliminados juntamente com os materiais residuais. Têm de ser eliminados separadamente. A eliminação no ponto de recolha público através de entidades particulares é gratuita. É da responsabilidade do proprietário de aparelhos antigos levá-los a estes pontos de recolha ou a pontos de recolha semelhantes. Com este pequeno esforço pessoal, contribui para a reciclagem de matérias-primas úteis e para o tratamento de substâncias tóxicas.

#### Безопасная для окружающей среды утилизация



Старые электрические приборы нельзя выбрасывать вместе с бытовыми отходами, их утилизация производится отдельно. Частные лица могут сдавать приборы в специальные пункты приема бесплатно. Владельцы старой техники несут ответственность за ее сдачу в специальный пункт приема или аналогичную службу. Чтобы внести свой вклад в переработку ценного сырья и ядовитых веществ, от вас требуется совсем небольшое усилие.

#### Thailand Warning message

เครื่องโทรคมนาคมและอุปกรณ์นี้ มีความสอดคล้องตามข้อกำหนดของ กทช.

#### Mexico Warning message

“La operación de este equipo está sujeta a las siguientes dos condiciones: (1) es posible que este equipo o dispositivo no cause interferencia perjudicial y (2) este equipo o dispositivo debe aceptar cualquier interferencia, incluyendo la que pueda causar su operación no deseada.”

#### Brazil Warning message

Este equipamento opera em caráter secundário, isto é, não tem direito a proteção contra interferência prejudicial, mesmo de estações do mesmo tipo, e não pode causar interferência a sistemas operando em caráter primário

#### **UAE logo requirements**

The characters shall appear in black print against a white background.

No character shall be less than 2mm in height.

The letters "TRA" shall be at least 3mm in height.

