

SMART WI-FI  
CAMERA  
USER MANUAL

Thank you for purchasing Smart Camera. Get started using your new devices by downloading TuyaSmart, one convenient app that manages everything straight from your phone. Easily connect to your home Wi-Fi and control multiple devices from the touch of your fingertips.

## Contents

Download & Register	2-4
Plug In	5
Connect (SmartConfig)	6-7
Connect (QR code net-pairing)	8-9
Questions, Troubleshooting, Notices	10-13

## What's in the Box



- Smart Wi-Fi Camera
- USB Cable

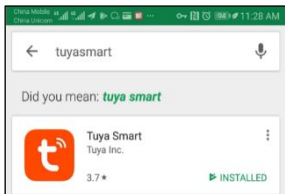
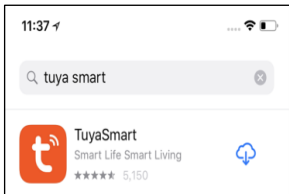
- Power Adapter
- User Manual

## Get Ready

- Know your Wi-Fi network and password
- Make sure your mobile device is running iOS® 8 or higher or Android™ 4.1× or higher
- Make sure you're connecting to a 2.4GHz Wi-Fi network (It can't connect to 5GHz networks)

# 1

Download the TuyaSmart app from App Store or Google Play.



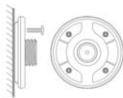
## 2、Description of assembly steps

Screw specifications: KA3\*24

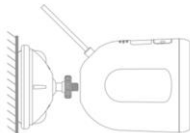
1. Rotate and open the base



2. Screw fixed to the wall



3. Rotate and close the top cover of the base and install the equipment



# 3

Register an account on your TuyaSmart app

←

## Register

United States of America +1 >

Mobile number/e-mail address

Get authentication code

**STEP 1.**  
Enter your mobile phone number  
or email address.

←

## Enter authentication code

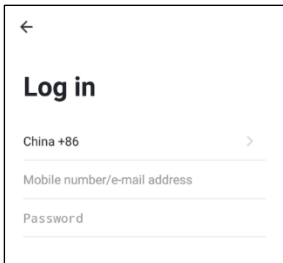
— — — — —

A verification code has been sent to your email  
address: testing@126.com, Resend(53s)

**STEP 2.**  
Enter the verification code  
and create a password.

# 3

Register an account on your TuyaSmart app



A screenshot of the TuyaSmart app's login screen. The screen is white with a black border. At the top left, there is a back arrow icon. Below it, the text "Log in" is displayed in a large, bold, black font. Underneath, there are three input fields, each with a horizontal line below the text. The first field is labeled "China +86" and has a right-pointing chevron icon to its right. The second field is labeled "Mobile number/e-mail address". The third field is labeled "Password".

**STEP 3.**  
Login to the App.

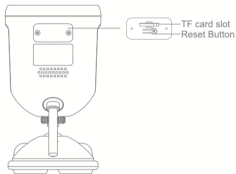


## How do I reset my device?

Using the screw to remove the down panel.

Press the Reset Button(as Pic) for several seconds until camera starts to beep.

**Optional:** Insert TF Card as shown in Pic.





## What does the blinking light mean?



Solid Red  
Starting up



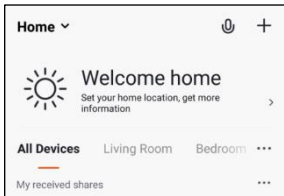
Blinking Red  
Ready to connect



Solid Green  
Connected

# 4

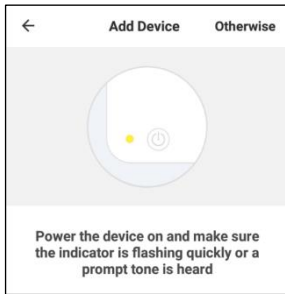
## Add device. Method 1: SmartConfig



### STEP 1

In the app, on the top corner of the Devices screen, click (+).

Choose "Smart Camera"

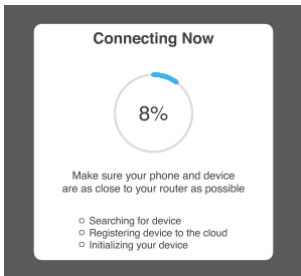


### STEP 2

Make sure the indicator light on the device is flashing Red, indicating the device is ready to connect. If not, follow instructions to Reset the device so that indicator light is flashing red.

# 4

## Add device. Method 1: SmartConfig



### STEP 3

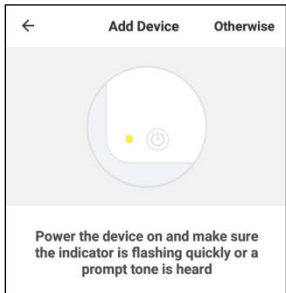
Enter your Wi-Fi network and password.

### STEP 4

The app will try to connect your device. During this time, the camera will beep, start quickly blinking Red, and then turn solid Green.

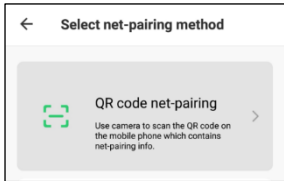
\*If the connection fails, try to connect directly using QR Code Mode.

# 5 Add device. Method 2: QR code net-pairing



## STEP 1

In the app, on the top corner of the Devices screen, click (Otherwise)



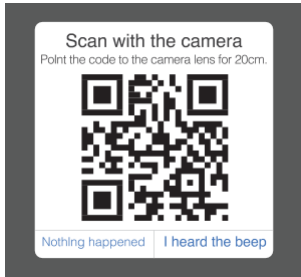
## STEP 2

Choose "QR code"

# 5 Add device. Method 2: QR code net-pairing



**STEP 3**  
Enter your Wi-Fi network and password.



**STEP 4**  
Scan the QR Code with the camera."

# Frequently Asked Questions

## **1.Can I share with family and friends?**

Yes, you can share your cameras with family and friends who will have access to view the camera and control your bulbs, plugs, and other devices. In the app, press the Profile button and click on the “Device Sharing” button, and you will be able to give or revoke sharing permissions. In order to share, the other user should already have downloaded the app and registered a new account.

## **2. What's the Wireless Range?**

The range of your home Wi-Fi is heavily dependent on your home router and the conditions of the room. Check with your router specifications for exact range data.

## **3. The device appears offline or unreachable?**

Make sure your Wi-Fi router is online and in range.

Make sure you have the latest app functionality by clicking “Check for firmware update” in your device settings.

## **4. Cannot connect to your Wi-Fi network.**

Make sure you entered the correct Wi-Fi password during the Wi-Fi setup. Check whether there are any Internet connection problems. If the Wi-Fi signal is too weak, reset your Wi-Fi router and try again.

## **5. How Many Cameras Can I Control?**

TuyaSmart app can control an unlimited amount of devices in an unlimited amount of locations. Your router may have a limit of how many devices can be connected to one router.

## **6. Is the process same when I add the device through wifi or network cable?**

Yes, they have same process ,you can use forth step to add device.

## System Requirements

- Mobile device running iOS® 8 or higher or Android™ 4.1x or higher
- Existing Wi-Fi Network

## Technical Specifications

- Camera: up to 10800p (1920x1080) at 20 frames / sec. H.264 encoding
- Field of View: 104° diagonal
- Audio: Internal Speaker and Microphone  
working temperature: -20~50°C
- Storage: supports up to 128G Micro SD card (not included)
- Wi-Fi: IEEE 802.11b/g/n, 2.4GHz (not compatible with 5GHz Wi-Fi networks)



## CE Notice:



Product name: Smart Camera

Model number: SC031-WNG2-V2

working frequency: 2412M-2472MHz

Max Power RF: \*dBm EIRP

Parameter item		minimum value	Classical value	Maximum value	Unit
RF Average Output Power, 802.11b CCK Mode	1M	—	17	—	dBm
RF Average Output Power, 802.11g OFDM Mode	54M	—	14.5	—	dBm
RF Average Output Power, 802.11n OFDM Mode	MCS7	—	13.5	—	dBm
<b>Frequency error</b>		-20	—	20	ppm
EVM@802.11b CCK 11Mbps Mode 17.5dBm			-10		dB
EVM@802.11g OFDM 54Mbps Mode 15.0dBm			-29		dB
EVM@802.11n OFDM MCS7 Mode 14.0dBm			-30		dB

CE Products with the CE marking comply with the Radio Equipment Directive (2014/53/EU), the Electromagnetic Compatibility Directive (2014/30/EU), the Low Voltage Directive (2014/35/EU) – issued by the Commission of the European.

Compliance with these directives implies conformity to the following European Standards :

EN300328 V2.1.1

EN301489-1 V2.2.1 EN301489-17 V3.2.0

EN62368-1:2014+A11:2017

EN55032:2015+AC:2016(ClassB);

EN55035:2017

EN62311:2008

## WEEE



This product must not be disposed of as normal household waste, in accordance with EU directive for waste electrical and electronic equipment (WEEE- 2012/19/EU). Instead, it should be disposed of by returning it to the point of sale, or to a municipal recycling collection point.

## **FCC Notice:**

This device complies with Part 15 of the FCC Rules. Operation is subject to the following two conditions: (1) this device may not cause harmful interference, and (2) this device must accept any interference received, including interference that may cause undesired operation.

The users manual or instruction manual for an intentional or unintentional radiator shall caution the user that changes or modifications not expressly approved by the party responsible for compliance could void the user's authority to operate the equipment. In cases where the manual is provided only in a form other than paper, such as on a computer disk or over the Internet, the information required by this section may be included in the manual in that alternative form, provided the user can reasonably be expected to have the capability to access information in that form.

(b) For a Class B digital device or peripheral, the instructions furnished the user shall include the following or similar statement, placed in a prominent location in the text of the manual:

NOTE: This equipment has been tested and found to comply with the

limits for a Class B digital device, pursuant to Part 15 of the FCC Rules. These limits are designed to provide reasonable protection against harmful interference in a residential installation. This equipment generates, uses and can radiate radio frequency energy and, if not installed and used in accordance with the instructions, may cause harmful interference to radio communications.

However, there is no guarantee that interference will not occur in a particular installation. If this equipment does cause harmful interference to radio or television reception, which can be determined by turning the equipment off and on, the user is encouraged to try to correct the interference by one or more of the following measures:

- Reorient or relocate the receiving antenna.
- Increase the separation between the equipment and receiver.
- Connect the equipment into an outlet on a circuit different from that to which the receiver is connected.
- Consult the dealer or an experienced radio/TV technician for help.

#### RF exposure warning

This equipment must be installed and operated in accordance with provided instructions and the antenna(s) used for this transmitter must be installed to provide a separation distance of at least 20 cm from all persons and must not be co-located or operating in conjunction with any other antenna or transmitter. End-users and installers must be provide with antenna installation instructions and transmitter operating conditions for satisfying RF exposure

## Adapter:

Adapter-US ↗	SHENZHEN KEYU POWER SUPPLY TECHNOLOGY CO., LTD. ↗	KA1517- 0502000USU ↗	Input: 100- 240V~50/60Hz 0.35A ↗  Output: 5Vdc, 2.0A ↗	↗	↗
Adapter-EU ↗	SHENZHEN KEYU POWER SUPPLY TECHNOLOGY CO., LTD. ↗	KA1517- 0502000EUU ↗	Input: 100- 240V~50/60Hz 0.35A ↗  Output: 5Vdc, 2.0A ↗	EN60950- 1, EN55032, EN55024 ↗	↗
Adapter-EN ↗	SHENZHEN KEYU POWER SUPPLY TECHNOLOGY CO., LTD. ↗	KA1503- 0502000UKU ↗	Input: 100- 240V~50/60Hz 0.35A ↗  Output: 5Vdc, 2.0A ↗	EN60950- 1, EN55032, EN55024 ↗	↗