

说明书

感谢您选用蓝牙防丢器！蓝牙4.0低功耗技术的产品，通过手机端专用APP软件设置，将宠物项圈、钥匙、钥匙扣、手机包等物品捆绑在一起，实现物品防丢失；甚至您还可以把本防丢器挂在小朋友身上，保证小朋友在您的视线范围内；或者挂在您的宠物身上，就不用担心它们走失。

一、APP的下载方式

本防丢器适用的APP名称：FindElfi
1、IOS系统用户可在APP Store搜索FindElfi安装即可。
2、Android系统用户可在Google play市场搜索FindElfi（中国大陆用户除外）安装即可；中国大陆用户可在应用宝或其它手机应用市场下载。

安装完毕后，在权限管理中把“自动运行”一定要打开。

二、使用方式

1. 开关机
开机：长按3秒后听“嘟嘟”两声提示音，指示灯会一直闪烁。
关机：长按3秒后听“滴”的一声长提示音，指示灯快速闪烁后熄灭。
2. 防丢
把手机蓝牙打开，然后打开APP后，直接进入“设备”，如图。



在“设备列表”中点击“连接”后，如图所示。

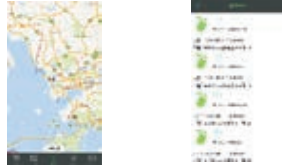


点击“报警”后，防丢器会“滴滴”长响，再次点击报警声停止；防丢器双击按键两次，手机报警；如手机与防丢器超出设定距离，会双向报警。
点击“”后进入如图所示。

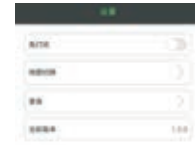


3. 相机
使用相机功能，单击防丢器，就会实现自拍功能；也可设置连拍功能。

4. 定位
定位功能只有在防丢器与手机断开连接时，保留断连时的定位位置，可寻找丢失历史。使用此功能需打开GPS，手机保持与网络连接，不然地图不会更新。



5. 设置



声打扰：设置声打扰后将不再听到手机的报警声音。
地图切换：地图切换到谷歌地图和百度地图。
录音：在选择录音模式下，单击防丢器按键，才会生成录音文件。
当前版本：软件版本号。

三、产品参数

1. 支持iOS及Android系统；iOS系统需7.0以上版本；Android系统需4.4以上版本，机型需支持蓝牙4.0标准
2. 支持蓝牙低功耗（BLE），支持双向报警。
3. 频率范围：2.402-2.480GHz
功率：-94dBm
工作温度：-20 ~ 70℃
待机电流：小于3uA。

说明书版本号：V1.0

Mango shape Bluetooth 4.0 Anti loss tracker Instructions RB-YC1021-FD01

Thank you for your selection of Anti-lost bluetooth button.
The Anti-lost bluetooth button is a product based on the latest bluetooth 4.0 low power consumption. It can connect with the users' easy to lost items (such as key, handbags and other items) through a dedicated APP on the mobile end software Settings, to realize the goods loss prevention; Even you can also hang this button to your young children, ensure that children in your sight range; Or hang on your pets, will not have to worry about their lost.

APP download method

Application names of APP : FindElfi
1. IOS system users can find FindElfi in the APP Store then install it.
2. Android system users can find FindElfi in the Google play market (Except the users in Mainland China)
Install it ;

After install, you must open the "automatic operation" in the authority management.

1. Switch on/off
Switch on: Press and hold the button for 3 seconds until you heard the Beep twice.
Switch off: Press and hold the button for 5 seconds until the log "Beep" sound.
2. Anti-lost

Open the mobile bluetooth, after inside the APP, Inside the "Device", shows in the image,



Click the "connect" in the "Device", shows in the image:



Click the "Alarm" button; the key finder will "Beep" long ring, click again, alarm to stop. Click the key finder button twice, the key finder in the APP will also alarm. Click the " " and enter then as the shown; "Anti loss" and "Find Me", you can also adjust the alarm and the volume size; you can change the distance in "Anti loss", it is recommended don't modify the default distance.



3. Camera

Use the camera function, click on the button, will take functions; Can also be set to shoot function.

4. Location

Find the record in the "Lost History" can be lost to.



5. Setting



Do Not Disturb: after setting don't disturb cell phone will no longer hear the alarm sound.
Map Switch: The App defaults Google maps and Baidu maps.
Record: In choosing a recording mode, will generate the recording File.
Version: for the current versions of the APP.

Product specification:

1. Support for iOS and Android systems: iOS7.0 or above; Android 4.4 or above. Models need to support Bluetooth 4.0 standard
2. Support Bluetooth Low Energy (BLE), support two-way alarm.
3. Frequency range: 2.402-2.480GHz
Receiving sensitivity: -94dBm
Operating voltage: 2.7-3.2V
Operating environment: -20 ~ 70℃

Instructions Version: V1.0

FCC Statement

Changes or modifications not expressly approved by the party responsible for compliance could void the user's authority to operate the equipment.

This equipment has been tested and found to comply with the limits for a Class B digital device, pursuant to Part 15 of the FCC Rules. These limits are designed to provide reasonable protection against harmful interference in a residential installation. This equipment generates uses and can radiate radio frequency energy and, if not installed and used in accordance with the instructions, may cause harmful interference to radio communications. However, there is no guarantee that interference will not occur in a particular installation. If this equipment does cause harmful interference to radio or television reception, which can be determined by turning the equipment off and on, the user is encouraged to try to correct the interference by one or more of the following measures:

- Reorient or relocate the receiving antenna.
 - Increase the separation between the equipment and receiver.
 - Connect the equipment into an outlet on a circuit different from that to which the receiver is connected.
 - Consult the dealer or an experienced radio/TV technician for help
- This device complies with part 15 of the FCC rules. Operation is subject to the following two conditions (1) this device may not cause harmful interference, and (2) this device must accept any interference received, including interference that may cause undesired operation.

Product: Mango shape Bluetooth 4.0 Anti loss tracker

Model No.: RB-YC1021-FD01

FCC ID: 2ANBORB-YC1021-FD01

FCC warnings:

Changes or modifications not expressly approved by the party responsible for compliance could void the user's authority to operate the equipment.

This device complies with Part 15 of the FCC Rules. Operation is subject to the following two conditions: (1) this device may not cause harmful interference, and (2) this device must accept any interference received, including interference that may cause undesired operation.

This equipment has been tested and found to comply with the limits for a Class B digital device, pursuant to Part 15 of the FCC Rules. These limits are designed to provide reasonable protection against harmful interference in a residential installation. This equipment generates, uses and can radiate radio frequency energy and, if not installed and used in accordance with the instructions, may cause harmful interference to radio communications. However, there is no guarantee that interference will not occur in a particular installation.

If this equipment does cause harmful interference to radio or television reception, which can be determined by turning the equipment off and on, the user is encouraged to try to correct the interference by one or more of the following measures:

- Reorient or relocate the receiving antenna.
- Increase the separation between the equipment and receiver.
- Connect the equipment into an outlet on a circuit different from that to which the receiver is connected.
- Consult the dealer or an experienced radio/TV technician for help.

This modular complies with FCC RF radiation exposure limits set forth for an uncontrolled environment. This transmitter must not be co-located or operating in conjunction with any other antenna or transmitter.