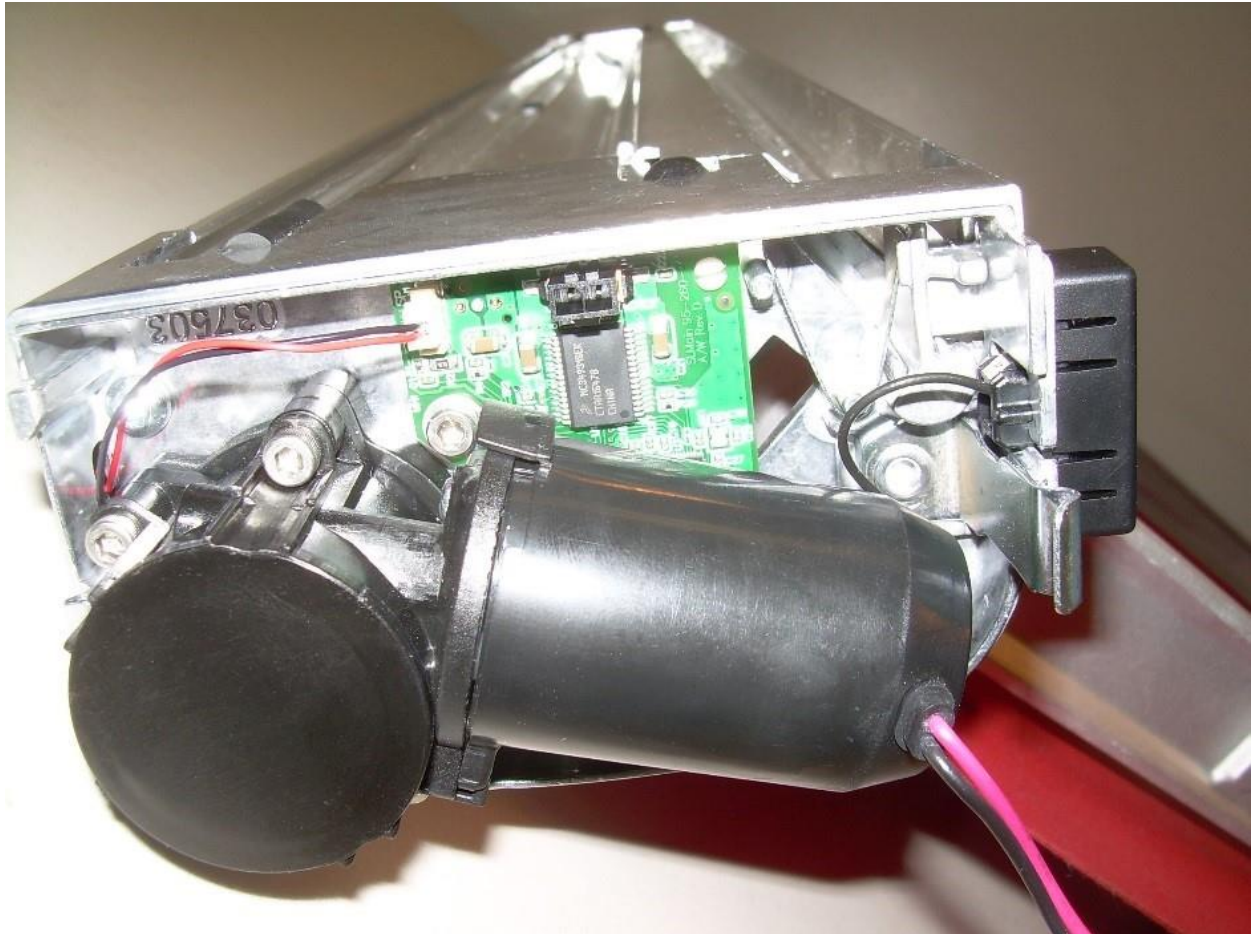
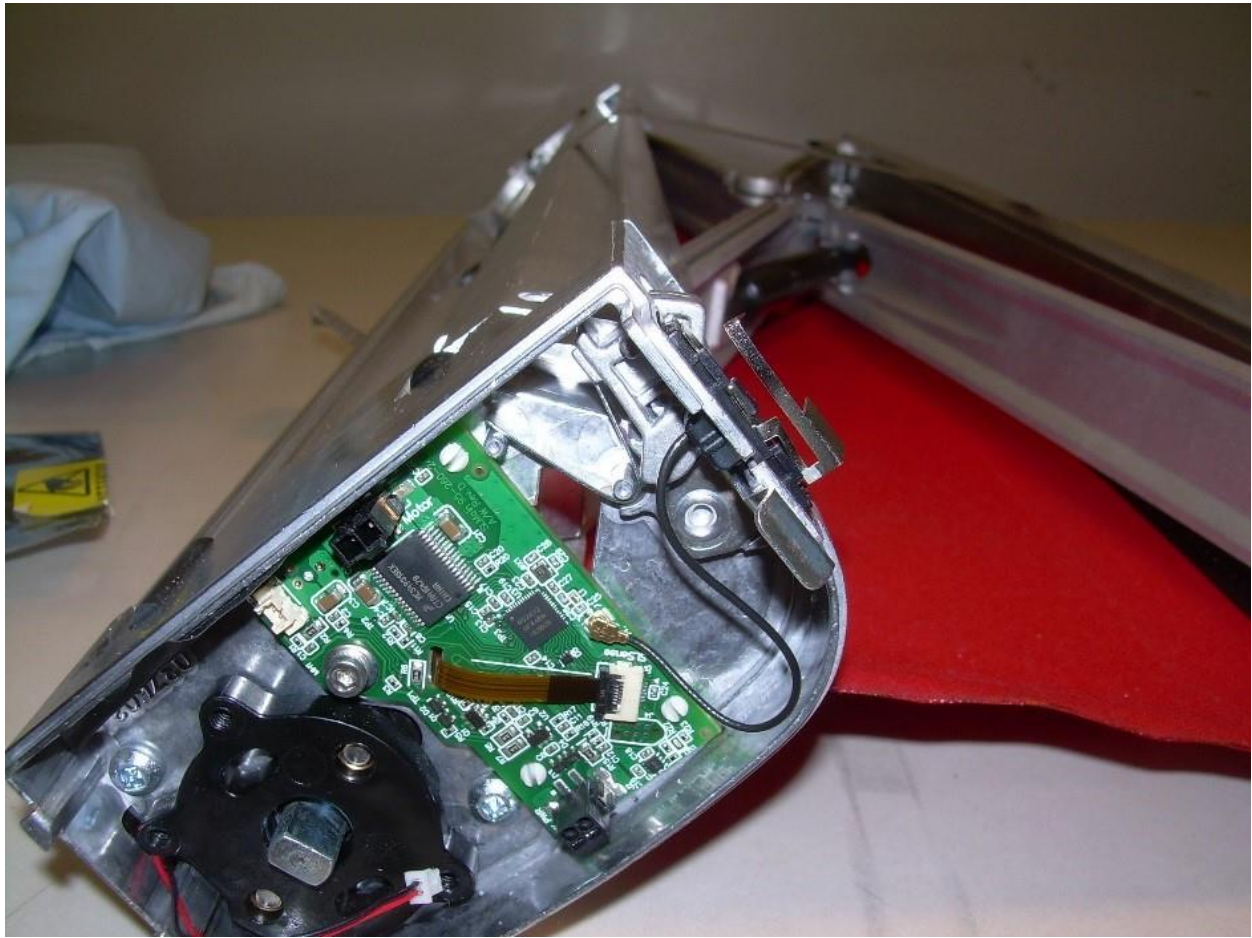


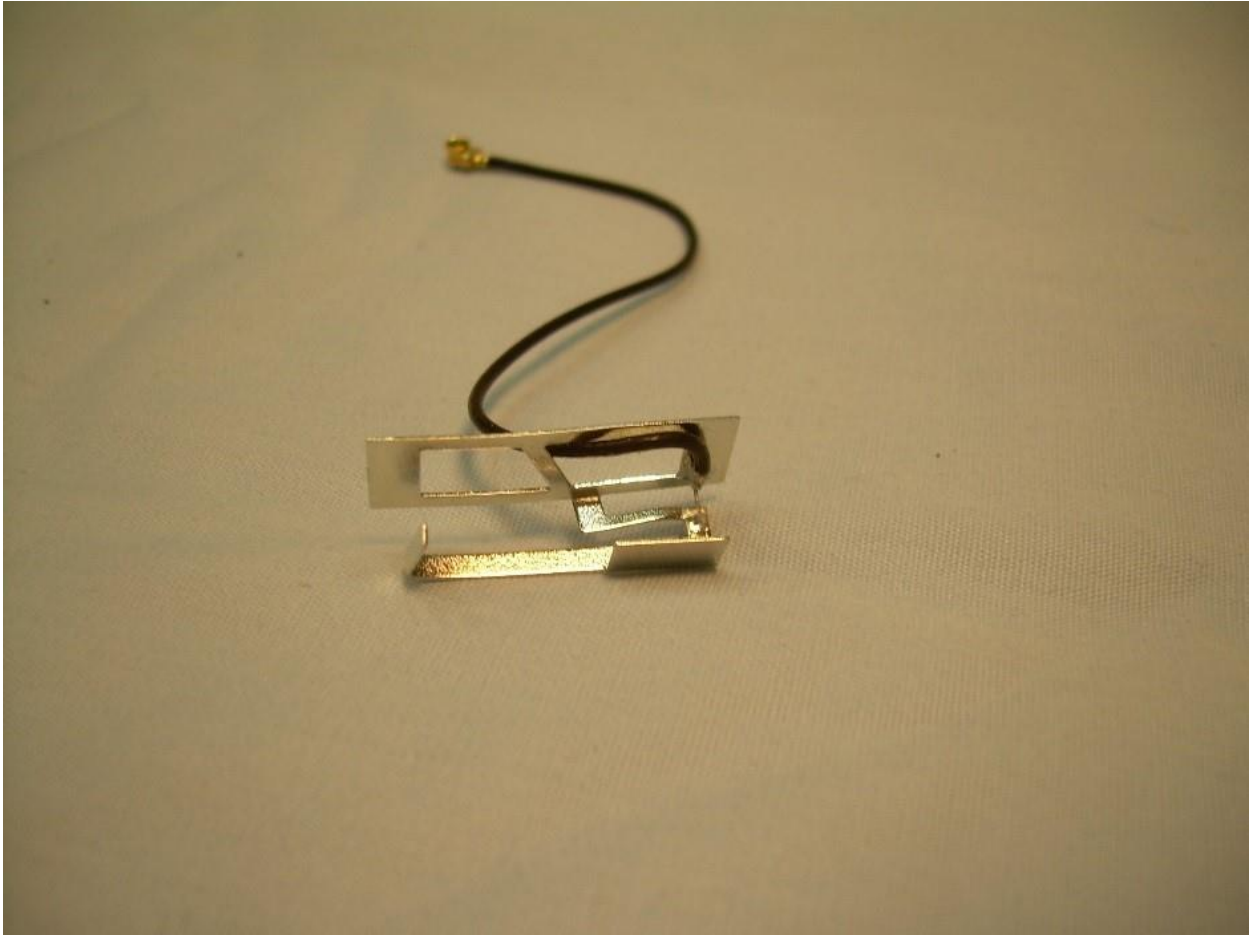
## Internal Photographs



Photograph 1 – View with the End Cap Removed



**Photograph 2 – View with the End Cap and Motor Assembly Removed**



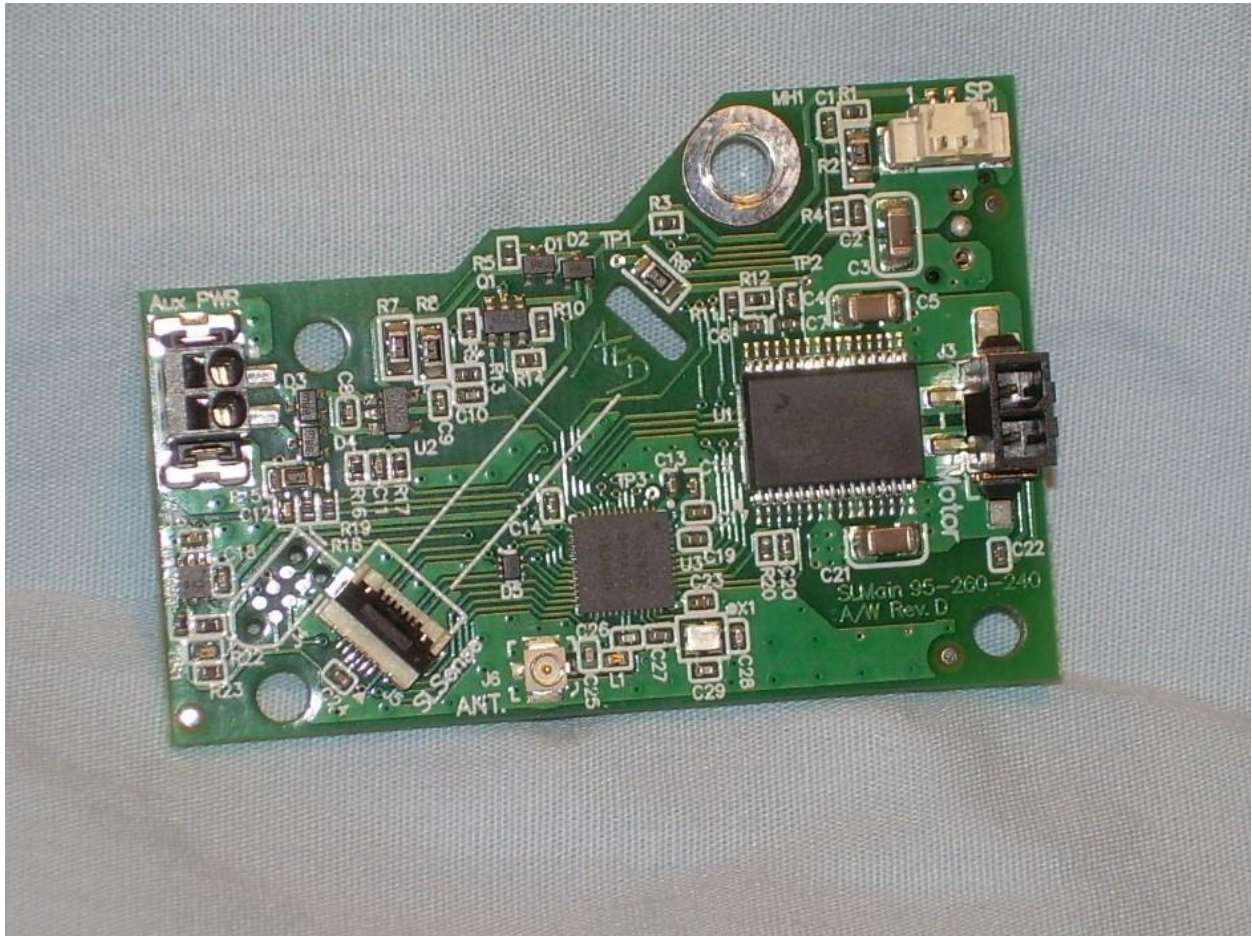
**Photograph 3 – View of the Antenna**



Photograph 4 – View of the Battery



**Photograph 5 – View of the Battery Connector**



Photograph 6 – View of the Component Side of the PCB



Photograph 7 – View of the Trace Side of the PCB